

11-1-1982

## Currents, Vol.1, No.4 (Nov.1, 1982)

Robert S. Caswell  
*University of Southern Maine*

Follow this and additional works at: <https://digitalcommons.usm.maine.edu/currents>

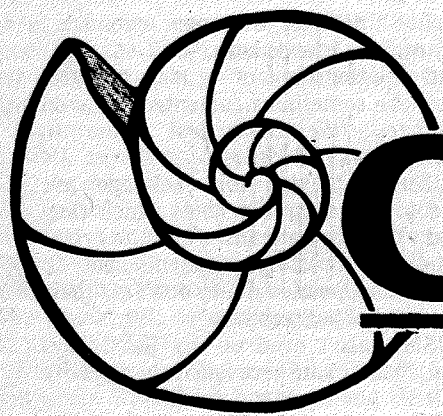
 Part of the [Higher Education Commons](#)

---

### Recommended Citation

Caswell, Robert S., "Currents, Vol.1, No.4 (Nov.1, 1982)" (1982). *Currents*. 228.  
<https://digitalcommons.usm.maine.edu/currents/228>

This Book is brought to you for free and open access by the University Archives at USM Digital Commons. It has been accepted for inclusion in Currents by an authorized administrator of USM Digital Commons. For more information, please contact [jessica.c.hovey@maine.edu](mailto:jessica.c.hovey@maine.edu).



# University of Southern Maine CURRENTS

Vol. 1, No. 4

November 1, 1982

## What's Inside

National Exchange	P. 2
Annenberg Scholar	P. 3
SAT News	P. 3



A Unit of the University of Maine

## Well Known Social Worker Contributes To Community

Professionals, faculty and students in the field of social work and psychotherapy now have access to more information in their fields thanks to a donation to USM from a noted social worker and psychotherapist.

Dr. Ethel D. Dalmat of Washington, D.C. has donated \$6,500 worth of material from her professional library to USM. The material — books, professional publications, research reports, government publications and journals — will be housed in our Portland library. Dalmat, who recently retired, specialized in the fields of psychotherapy, child welfare and mental health and sex and family therapy.

On learning of the gift, President Woodbury said he was particularly pleased because of "its value not only to USM faculty and students, but to the people of Maine."

"This is probably the largest collection of its kind in Maine," says Suzanne L. Knowlton, associate university librarian. "It's unique in that it includes materials for the layperson as well as material for faculty, students and practitioners." Among donated works are 260 books, 150 journals "and an infinite number of research papers and articles."

Dalmat chose to donate the works to USM because of her long-standing association with Luisa S. Deprez, USM associate professor of social welfare. Deprez, former director of children's services for the Maine Department of Mental Health, met Dalmat, then coor-

dinator of special mental health programs for children with the National Institute of Mental Health, in 1973.

"Maine was then one of two states involved in a grant with the National Institute of Mental Health," says Deprez. "Ethel (Dalmat) served in an advisory capacity to us. She is my mentor and the person who inspired me to continue in social work and my specialization in children's mental health."

Upon her recent retirement, Dalmat expressed a desire to donate works to the university where Deprez teaches.

Dalmat is a former Maryland delegate to the White House Conference on Children and Youth. She was consultant to the president of Guatemala on social work training. Her work resulted in Guatemala's first school of social work.

Dalmat is a former member of the clinical faculty, Department of Community Health, Georgetown University School of Medicine. She entered private practice in the field of psychotherapy in Washington in 1974.

Currents is published every other Monday by the Office of Public Information. Material should be submitted to 624 CRAS, Portland no later than Friday noon, 10 days prior to publication date. Robert S. Caswell, editor.



Dr. Ethel D. Dalmat, left, with a few of the books she has donated to USM. Pictured with her are Luisa S. Deprez, associate professor of social welfare, center, and Suzanne L. Knowlton, associate university librarian.

## USM/UNH Agreement Benefits State

Studies indicate that less than one-third of currently-employed health professionals in the U.S. have formal training in administration.

USM and the University of New Hampshire have moved to make those training opportunities available in southern Maine. This fall USM and UNH began offering an undergraduate degree program in health administration and planning on the USM campus.

For some years, USM and the University of Maine's six other campuses have been sharing expertise in cooperative degree programs covering a broad spectrum of knowledge. The agreement with UNH gives another dimension to such sharing.

UNH has a health administration and planning program which was cited by "Money" magazine as one of the two best in the country. Several courses have been offered by UNH on our campuses during the past three years. But this fall marks the first time that a curriculum leading to a bachelor of science in health administration and planning has been available here.

UNH faculty will teach the health administration and planning courses. General requirement courses offered by us can be credited toward the UNH degree.

Students completing the program will be awarded a UNH degree.

Nine upper-level courses will be offered here on a rotating basis. Offerings this academic year are "Seminar in Health and Medical Care Systems," "Financial Management of Health Care Institutions," and "Hospitals and Health Services Administration."

"The program is aimed at practicing health professionals," says Lee Seidel, chairman of UNH's Health Administration and Planning Program. The "non-traditional" courses are tailored to meet the needs of those people. Classes at USM will be held only once a month in day-long Friday sessions for the convenience of these working students.

Students register through UNH's Division of Continuing Education. Students in the southern Maine region can obtain information through our Advising and Information Department. "Our role," says Richard H. Sturgeon, director of AID, "is to serve as the local contact for people interested in the program and to advise those students already enrolled."

The arrangement will be continued, revised, or terminated after a one-year trial period.

## The "Leaven"

A seven-person committee, called "The Leaven," is coordinating a series of three seminars related to USM's upcoming graduate program in public policy and management.

The idea, says Stephen J. Reno, associate provost and coordinator of the committee, is to establish and maintain dialogue in the subject area. Three types of sessions are in the minds of "The Leaven": (1) Comments and advice from graduates of public policy and management programs; (2) The same from those who have planned such a program, and (3) Current issues in public policy and management.

The first session has taken place; a second is planned for in two to three

weeks from now. Reno would appreciate suggestions for topics or speakers.

Besides Reno, the Committee includes Robert J. Goettel, Irving D. Fisher, Robert C. McMahon, Kathleen MacPherson, David D. Gregory and former Governor Kenneth M. Curtis.

The public policy and management program will begin sometime next year. It's expected that a doctoral program will be added in about three years. A search for a director of the program is already underway.

The thrust of the program, which will be interdisciplinary in nature, is to offer students opportunities to prepare for leadership careers in public policy analysis, development, implementation and management.



# Exchange: A Whole New Perspective

(EDITOR'S NOTE) More and more opportunities exist for our students to study abroad or at colleges and universities in the U.S. We now have foreign exchange programs with institutions in Ireland, England and the Netherlands. We're exploring the possibilities of opening similar programs in Sweden and Brazil. This story focuses on the National Student Exchange, a program that has given more than 250 of our students the chance to study at any of 65 U.S. colleges and institutions.

It has been "a real success story" for one of our students. Another terms it "a mind-stretcher." And it gave yet another under-graduate "a whole new perspective on a different people and place."

"It" is the National Student Exchange, a program which gives students the opportunity to "travel, see a lot of the country, study in a new academic environment, and make some close friends," says Elizabeth Manzur, a therapeutic recreation graduate. Manzur spent the 1981 fall semester at the University of New Mexico at Albuquerque.

Qualified sophomores and juniors can spend up to a full academic year at one of 65 participating U.S. colleges and universities, from the University of Maine at Fort Kent to the University of Hawaii at Manoa. We are one of two Maine institutions to offer NSE opportunities.

Lee Schatz, a senior from Portland, spent his entire sophomore year at Bowling Green State University, Bowling Green, Ohio. "The program is one of the reasons I attended USM," says Schatz. "I've lived here (Portland) all my life, so I wanted the chance to go to another part of the country. You never realize how different things are away from home. The exchange really gave me a whole new perspective on a different people and place."

"The national exchange offers students a truly different kind of educational opportunity," says Dr. Gordon S. Bigelow, dean for Educational Services. "The

diversification of study opportunities is certainly one benefit of the program, but we're also pleased that students can broaden their horizons through increased cultural awareness."

More than 250 USM sophomores and juniors have gone on exchange since we first joined the national program in 1973. Right now, 22 USM students are studying all over the country. And the 36 students on exchange this fall on our campus help enrich university life with their diversity of ideas and backgrounds. Maia Zaiger, a junior from the University of Hawaii, Julie McCutcheon, a junior from Cal State at Chico, and Robin Ramm, another junior from the University of North Carolina are among exchange students studying with us this fall.

Tuition and financial aid options are available. Students might pay the in-state tuition cost of the school they are visiting, or pay the tuition at their own school. Financial aid is often available at the host school if the student is paying host school tuition costs. These and other options are worked out in cooperation with the NSE coordinator at each campus.

"Unfortunately, a major misconception is that it is very expensive to go on exchange," says Debra J. Vincent, a USM graduate and former NSE student. Debra was presidential intern for the 1981-1982 year. "The program is designed for students and is in accordance with their personal, educational, and financial needs. The real investment is a psychological one, just being willing to try something new and then DOING it."

"The options are so attractive," says Marjorie J. Rodgers, USM's associate director of Admissions and NSE coordinator, "and they find a whole new world out there." Each member institution sponsors a NSE club for former and present exchange students, "so that our guests aren't left out in the cold," says Rodgers.

Vernon Braswell, a USM senior from Kittery, spent last fall and the previous

spring at Boise State University, Boise, Idaho. "It's the best experience I've ever had," says the computer science major. "My father is in the Air Force, so it's even a great experience for someone like myself who has traveled before." Braswell notes that he also found the exchange to be exciting and stimulating from an academic standpoint. Speaking of exciting and stimulating, he even got the chance to do some white water rafting through the infamous Hell's Canyon on the Snake River.

Amy Novel, president of the NSE student organization at USM, came to USM on exchange from Illinois State in the fall of 1980. She's still here, though not as an exchange student. Novel, now a senior, transferred to USM as a full-time student. As one of 20,000 students at Illinois State,

"I found it difficult to become involved. I enjoy making friends here."

And relationships of a more serious nature are sometimes cemented while on exchange. "We have lost some to marriage," says Rodgers.

Students applying for exchange are asked to name three schools which they would like to attend. Novel advises prospective exchange students not to become disappointed if they don't get their first choice of host schools.

"USM wasn't even on my list," says Novel, "but I came here and it changed my life."

USM was the number one choice of Diane Matthews, an exchange student from the University of Utah. She sums up her exchange visit to USM in four words: "I'm fascinated with Maine."

By Robert S. Caswell

## Have You Heard?

A "Corporate Walk/Run for the Heart" held last summer at USM has raised \$10,700 for education and research programs of the American Heart Association. Coordinator of the run, Marjorie T. Podgajny of USM's Lifeline, reports that more than 600 persons participated. It was sponsored by Lifeline, the Maine affiliate of the American Heart Association and by the American Association of Fitness Directors in Business and Industry.

★ ★ ★ ★

More than 5,000 students and parents visited the "College Fair" held recently in our Portland Gymnasium. Edwin C. Horne, associate director of admissions, termed the program "most successful." The fair was a cooperative effort of USM, area high schools and the New England Association of College Admission Counselors.

★ ★ ★ ★

Noted Chinese opera singer Wang Jue performed on our Gorham campus Thursday, October 14. Mme. Jue, mezzo-soprano of the Shanghai Opera Company, also performed in a recital class, a master music class and in an open recital. She is presently on a six-month tour of the U.S.

★ ★ ★ ★

James Westphal of Northeast Harbor, a junior in the Industrial Arts Teacher Education program at USM, has won an annual scholarship award from the New England Industrial Arts Teacher Association. The award was made recently at the association's annual conference at the Samoset resort.

## Positions

CLERK-TYPIST, CRAS, full time, \$4.39.

EXECUTIVE SECRETARY, Gorham campus, full time, \$5.21, apply Catherine Quinlan, 221 Bailey Hall, by November 5.

SECURITY GUARD II, Police and Safety, Portland campus, part time, \$4.32.

BIOLOGY FACULTY POSITION, full time, temporary (Jan. 1 - May 31, 1983), apply by November 1 to Dr. L. F. Gainey, Chairman, Department of Biology.

COMMUNICATION FACULTY POSITION, part time, spring semester, apply by November 5 to Dr. James Bethel, Chair, Department of Communication.

SOCIOLOGY FACULTY POSITION, three semesters beginning January 10, 1983, apply by November 12 to Peter Lehman, Chair, Department of Sociology.

ASSISTANT DIRECTOR OF STUDENT FINANCIAL AID (Need Assessment), available immediately, apply by November 5 to Ms. Lynn Fremd, Chairperson, Assistant Director of Student Financial Aid.

"Pages," an exhibition that explores use of the book as a medium of visual expression, is showing at USM's Art Gallery on the Gorham campus from 12 noon to 4 p.m., Sundays through Thursdays, through November 17. It includes more than 100 works focusing on recent alternative uses and adaptations of the book format.

★ ★ ★ ★

Daniel R. Warren of Scarborough, a third year student at the University of Maine School of Law, is in Ireland this fall at University College, Galway, studying law as an exchange student. He will do a research project with Professor Kevin Boyle, dean of the University College law faculty. Boyle was recently a visiting scholar at USM. They will also work on a comparison of Irish/ British and U.S. criminal law.

## Who's Who

The USM Honors Committee is accepting nominations for "Who's Who Among Students in American Universities and Colleges." Nominees must have at least 2.5 overall grade point average, hold junior, senior, or graduate student status and carry at least six credit hours.

Nominations may come from faculty, administration and students. However, nomination forms should be submitted by nominees themselves to assure completeness and accuracy of information.

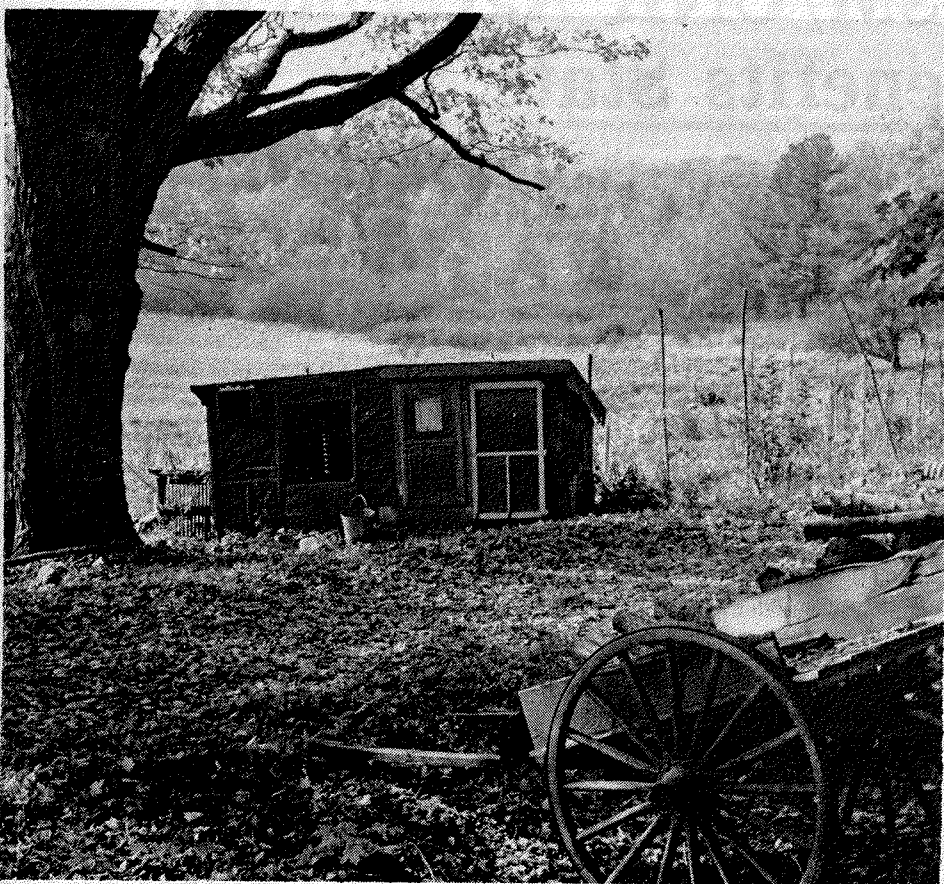
Nomination forms are available at Student Activities offices in Portland and Gorham. Application deadline is 4 p.m., Friday, November 12.

## COE Changes

An administrative change in the College of Education has been announced by Dean Loren W. Downey.

Charles M. Lyons, assistant dean for the college, has accepted the position of acting director of the University of Maine Health Professions Education Office, effective October 1.

Dorothy D. Moore, associate professor of education, has agreed to replace Lyons as assistant dean of the College of Education. She will assume Lyons responsibilities while continuing as an activity director for Title III and as a member of the Department of Human Resource Development, says Downey.



Fall Scenes 1982



## Good SAT News

Members of our freshman class are doing well on SAT's compared to other freshmen in Maine and New England.

In fact, figures show that USM freshmen have a higher average combined SAT score than the Maine average and a higher average than most state averages in New England.

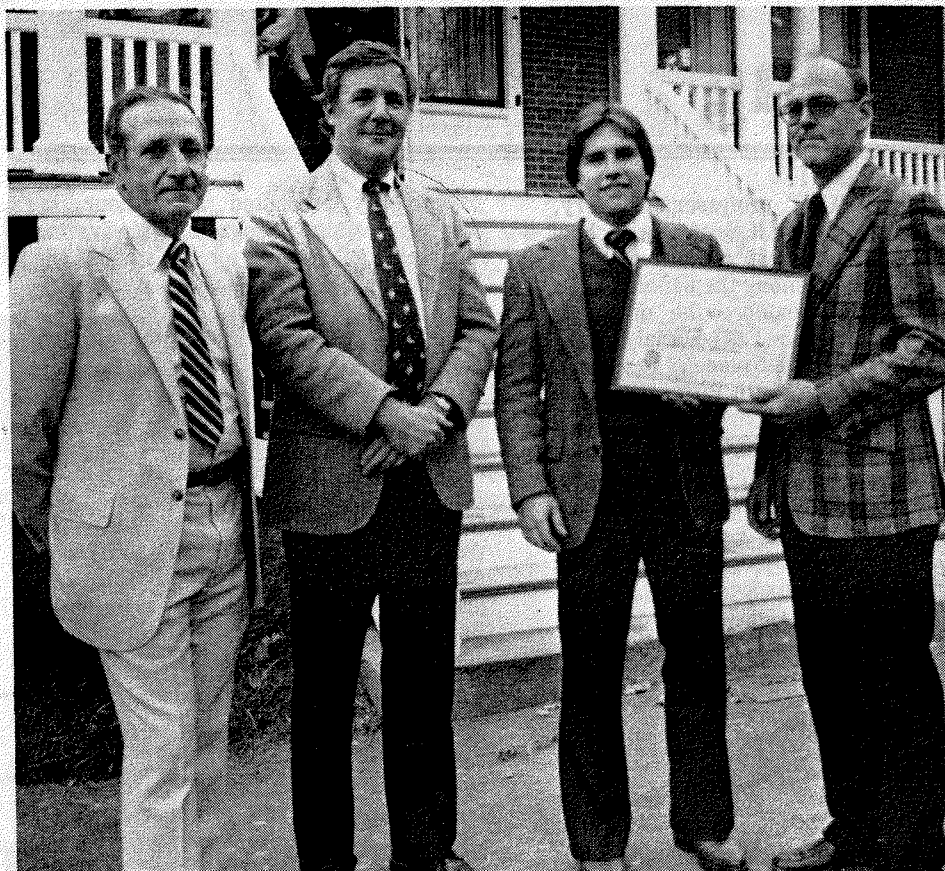
Director of Admissions Dennis P. Farrell, said that the average combined SAT for entering freshmen at USM is 916 (439 verbal, 477 math). The Maine State average is 890. Averages in other New England states are New Hampshire, 925; followed by Vermont, 904; Connecticut, 896; Maine, 890; Massachusetts, 888; and Rhode Island, 877.

The Chronicle of Higher Education notes that while Maine was fourth among New England states in combined test scores, it was last in the percentage of high school graduates taking SAT's.

## Campus Notes

A Western Maine ski area is offering USM students and staff a special reduced rate for season tickets. For more information on the nearly half-priced tickets at Mt. Pleasant, contact the Student Union, 94 Bedford Street, Portland, 780-4090.

USM's 1982-1983 graduate catalog is available. Copies of the 70-page catalog may be obtained from the Office of the Provost.



**USM baseball player Frank Watson of Portland has been named a National Association of Intercollegiate Athletics (NAIA) All American Honorable Mention. Pictured at a recent team reception at President Woodbury's home, are left to right, Director of Athletics Richard A. Costello, President Woodbury, Watson and Coach David Drew.**

## Annenberg Scholar Named

Pamela S. Pease of the Center for Research and Advanced Study has become one of only eight people across the U.S. to be named an Annenberg Scholar.

She recently left her position as CRAS research assistant to begin doctoral-level study in communications at the University of Southern California Annenberg School of Communications. Pam has been a CRAS staff member since 1977. She has taken an educational leave of absence and may continue to work on CRAS research projects.

The Annenberg program is based at USC and the University of Pennsylvania, Philadelphia. The school was founded by Walter Annenberg, the Philadelphia publisher, philanthropist and former

ambassador.

Pam was invited to join the program on the basis of her research writing, her performance in graduate school and results of special test scores. As an Annenberg Scholar, she receives tuition supports and stipends for research.

A native of Hollis, Me., Pam is a graduate of Roger Williams College, Bristol, R.I. She recently earned a master's degree in interactive telecommunications at New York University.

Pam plans to continue the study of interactive telecommunications — the use of audio-video and computer systems for communication among people in different geographic locations — as an Annenberg Scholar.

## NPR's Ungar Visits USM

Sanford Ungar, co-host of National Public Radio's "All Things Considered," will speak on "Foreign Policy, the Press and the Public" Friday, November 12, on our Portland campus. Sponsors include the Speakers and Cultural Events Committee, the World Affairs Council of Maine and the Maine Public Broadcasting Network.

Ungar will speak at 5:30 p.m. in Luther Bonney Auditorium. A reception will precede his talk from 5:00 to 5:30 p.m. in Luther Bonney lobby.

Ungar served as managing editor of Foreign Policy magazine prior to joining "All Things Considered" in 1980. He has also served on the staff of the Washington Post, and as Washington editor of the Atlantic Monthly. He has been a correspondent for United Press International and Newsweek in Paris and Nairobi, respectively.

For more information, you can call Wendy B. Ashley, chair, Speakers and Cultural Events Committee, 780-4095/780-4090.

## Timely Lectures

History professor Fred L. Padula is moderating a series of luncheon panels sponsored by the World Affairs Council of Maine.

Panelists include history professor Joel W. Eastman, law school professors James Friedman and Martin A. Rogoff and anthropology professor Judy Tizon. Attorney Peggy McGehee is the fifth panelist.

William E. Haggett, "The Soviet Fleet, The U.S. Navy Build-up and Bath Iron Works," Wednesday, November 3. Shyla Murray of the Refugee Resettlement Program and her colleague Christopher Lydon, will discuss "A Second Home: Refugee Resettlement in Maine," Wednesday, November 10.

The luncheon program opens at 11:30 in the First Parish House at 425 Congress Street. Two earlier programs included the topics "Spies: One Episode in the Life of the CIA and KGB" and "Best Foot Forward: Maine Shoes-Protectionism and Competition in the World Market."

## Sports Shorts

Two well-known professional basketball experts were scheduled to demonstrate their skills at 7 p.m. today (Monday, November 1) in the Hill Gym. Players, coaches and members of the public have been invited. They are George and Austin Lehman, two of the most outstanding shooting and ballhandling experts in the country. Austin's demonstrations have been highlighted on national TV and in clinics throughout the country. His brother, George, has been conducting about 200 clinics a year. USM, the SWISH basketball camp, and Pro-Keds are sponsoring the visit. Information is available at ext. 4045 or 5432 (Joey Bouchard).

The USM golf team placed second overall last month at the annual Western Maine Athletic Conference championship. Mark Fiske of USM was co-medalist, shooting a 77. USM's total score, 322, was only two strokes behind match winner University of Maine at Farmington.

\*\*\*

Vonnie Gros, the coach who is preparing the USA National Field Hockey Team for the 1984 Olympics, visited USM last month to lead workshops at the "STIX" Field Hockey Camp. In an interview with a Bangor Daily News sportswriter, Gros said she was impressed with the Maine players she saw on our Gorham campus.

\*\*\*

James H. Gildard of Portland is new coach of our women's cross country team. He is a former runner for the University of Maryland. "The potential on paper for this fall's team is just incredible," says Gildard.

\*\*\*

Kathy Gregory of Portland has accepted appointment as director of student intramurals and recreation within the Department of Athletics. It will be her job to arrange for intramural team sports or individual recreation activities on our two campuses. A native of Birmingham, Alabama, she has coached our women's volleyball squad for two years. She is former collegiate basketball and volleyball player, and still competes in U.S. Volleyball Association-sanctioned games. Gregory also will coach women's volleyball and softball.

## Affirmative Outreach

Kathleen H. Bouchard, director of equal employment opportunity, is encouraging the USM community to help in affirmative action outreach efforts.

She hopes members of the community will submit names or contact individuals, especially women and minorities, who appear qualified candidates for various faculty and administrative positions.

Those candidates should be requested to submit resumes to the chairperson of the appropriate search committee. Bouchard's office, ext. 4156, can identify chairpersons of each committee.

## National Commission Hears Of Successful USM Program

Gloria S. Duclos, professor of classics, testified in Cambridge recently about the success of the University of Maine's Summer Institute for Gifted and Talented High School Students held at USM.

Her testimony was at a public hearing at Harvard, conducted by the National Commission on Excellence in Education.

Success of the institute was further attested to at a Conference on Interdisciplinary Approaches to Curriculum organized recently on USM's Gorham campus.

Close to 30 persons attended the conference, representing guidance coun-

selors, principals, superintendents and teachers of students who attended the U of M Institute.

Conference participants discussed last summer's institute as well as formation of interdisciplinary studies at the high school level. Duclos says she understands that teachers at Portland High are working on development of such a course. She said faculty came from as far away as Limestone to join in the conference.

Next summer's institute, she said, has already been planned. One change in the 1983 institute, she believes, will be to require more writing from students.

## Aid in Portland

We opened a student financial office to provide counseling service on USM's Portland campus, in addition to the office maintained for many years on the Gorham campus.

It's the first time in ten years that financial aid has had coverage on both campuses. Additionally, a financial aid

staffer is at each of USM's outreach centers, including the In-town Learning Center, the Biddeford/Saco Learning Center and the Sanford Learning Center one half day a month beginning in August. Portland campus hours will be from 8 a.m. to 12:30 p.m., Monday through Thursday in the Advising and Information Office.



# What We're Doing

**KATHLEEN M. ASHLEY**, associate professor of English, read her paper "Bourgeois Piety and the Passion of Jean Michel" at the Fifteenth Century Symposium in Regensburg, Germany this summer.

**JOHN W. BAY**, associate professor of economics and coordinator of Title III, addressed the Greater Portland Area Development Council on the topic "The Economy — An Assessment and a Look Ahead."

**JOHN C. BODEN**, instructor of music, **PETER J. MARTIN**, assistant professor of music, **RHONDA MARTIN**, part-time instructor, and **ROBERT J. RUSSELL**, assistant professor of music, directed an in-service music clinic for band choir directors of Aroostook County on October 9.

**PETER CARMICHAEL**, director, cooperative education, School of Business, Economics and Management, and assistant professor of associate business administration, and **JOHN W. BAY**, associate professor of economics, presented a program for teachers offered by the Maine Council on Economic Education. The topics were the "Federal Reserve System" and "A Look at the New Financial Instruments."

**GEORGE P. CONNICK**, director of the Division of Basic Studies, was elected to a two-year term as president of the Council for Interinstitutional Leadership at the national conference in Minneapolis, MN on October 13. The council represents over 2,000 colleges and universities. Connick served as vice-president from 1980-1982.

**H. DRAPER HUNT**, professor of history, and **JUDY R. POTTER**, professor, School of Law, and director, clinical practice program, will be among the panelists at a public forum to explore the questions raised by "the historic and societal costs of 'keeping woman in her place,'" to be held November 9 at the South Portland Public Library.

**IRA H. HYMOFF**, director of counseling and career development, introduced two new staff members at the annual meeting of the USM Alumni Advisory Council October 30. They were **IRENE HONEY** and **MARY ANN BENSON**. The three discussed new directions in counseling and career development. They also asked alumni for advice and assistance in student placement and for recommendations for possible services their office might perform for alumni.

**JO-ANNA MOORE**, adjunct professor of art and director of Maine Arts Education Projects, spoke on "Integration of Arts and Learning" at the annual "Focus on Learning" conference held October 20 at the University of Maine at Farmington.

**LEONARD J. SHEDLETSKY**, assistant professor of communication, has been named associate editor of "Systemsletter," the official journal of the Information Systems Division of the International Communication Association. He will be soliciting and selecting for publication manuscripts on communication and cognition.

**WILLIAM STURNER**, professor of management and organizational

psychology, presented a six-hour in-service training program "Motivating Yourself and Others" for the staff of the Bureau of Mental Retardation on September 23 at Pine Tree Camp, Rome, Maine.

**JAMES V. SULLIVAN**, professor of physical education and recreation, and director of USM's Employee Health and Recreation Program, spoke at the Association Internationale des Ecoles Superieures d'Education Physique Convention about his book "Teaching Physical Activities to Impaired Youth: An Approach to Mainstreaming." Held in Boston, it was the first international convention of physical education teachers in the U.S.

**MICHAEL G. WILLIAMS**, director of the rehabilitation counselor education program, received a fellowship from the International Exchange of Experts and Information in Rehabilitation program, to study in Denmark. He spent several weeks reviewing various Danish programs, practices and policies which help that country's elderly disabled to live independent lives. He talked about his trip in a recent live interview on WIDE-Radio, Biddeford.

**MARGO WOOD**, assistant professor of education, has had an article, "Invented Spelling," accepted for publication in the October issue of the N.C.T.E. journal "Language Arts." She has recently received a \$3000 "Teacher/Practitioner" scholarship from Boston University, where she is pursuing doctoral studies.

## Faculty Exhibit

The annual Faculty Exhibition will be December 5-16 in the Art Gallery on our Gorham campus.

The show's opening for the university community will be from 4 to 6 p.m. Thursday, December 2 and the exhibit will open to the public at noon December 5.

Gallery Director Juris Ubans asks that work ready for exhibition be brought to the gallery either Monday, November 29, or Tuesday, November 30 from 12 to 4 p.m. No work will be accepted after 4 p.m. on Tuesday.

The Art Gallery is open Sunday through Thursday, from 12 to 4 p.m. It is closed Fridays, Saturdays and holidays.

## Cook Joins Series

Albert Cook, professor of comparative literature and classics at Brown University, will lecture on "Surrealism in Poetry and Painting" at 4 p.m. Friday, Nov. 9, in Room 302 of the Center for Research and Advanced Study.

His appearance at USM is sponsored by the Department of English Lecture Series.

Cook earned both undergraduate and graduate degrees from Harvard, where he was also a junior Fellow of the Society of Fellows. He held a Fulbright at the University of Paris from 1952 to 1953.

He has been a Fulbright Research Professor of Comparative Literature at the University of Munich and Fulbright Professor American Literature at the University of Vienna. He has also studied and worked in Athens, Geneva, Cambridge and the Soviet Union.

He has published widely both books of criticism and poetry and has produced plays, translations and textbooks.

## Chairpersons Named —

Department chairpersons and coordinators for the 1982-1983 academic year have been nominated by faculty and appointed by the deans of the respective schools and colleges.

Chairmen selected are: College of Arts and Sciences: Art, Duncan A. Hewitt; Biology, Louis F. Gainey; Chemistry, John S. Ricci; Communication, James A. Bethel; Criminal Justice, Piers Beirne; English, L. Morrill Burke; Foreign Languages, Mara Ubans; Geography - Anthropology, Franklin D. Hodges; Geosciences, Irwin D. Novak; History, Joel W. Eastman; Math/Computer Science, Maurice J. Chabot; Music, Jerry L. Bowder; Philosophy, Jeremiah P. Conway; Physics and Engineering, Robert A. Walkling; Political Science, John A. Peirce; Psychology, John S. Bishop; Social Welfare, Joseph D. Kreisler; Sociology, Peter M. Lehman; and Theatre, Walter R. Stump.

College of Education: Professional

## Summer's Coming!

Acting Provost Helen L. Greenwood is seeking suggestions for special events for USM's 1983 summer program. Her request follows by a few months completion of the 1982 summer program, which enrolled 2,780 persons.

It was, Greenwood reports, a "successful summer — in fact, second largest in USM history."

USM will be placing special emphasis next summer on events relating to the State of Maine and to the convocation theme, "Changing Roles of Women and Men."

Education, John E. Deady; Human Resource, John M. Sutton, Jr.; and Industrial Education, Arthur O. Berry.

School of Business, Economics and Management: Associate Business, Joel I. Gold; Economics, Robert C. McMahon.

School of Nursing coordinators are: Louise M. Czupryna; Jeanne G. Normandeau, Jill Tiffany and Sallie C. Ullman.

## Campus Notes

The Faculty Senate Research Committee has \$10,000 available to support research by USM faculty members during the period January to October 31, 1983. Deadline for applications is December 1. Copies of grant guidelines are available from Peter M. Lehman, Faculty Senate Research Committee, Sociology Department, Portland campus.

\*\*\*

USM is making available special travel arrangements for interested employees to a "1983 Winter — Fun Weekend." February 25 - 27, at Mt. Orford in Quebec. Participants will stay at the Sherbrooke Holiday Inn and can ski on Mt. Orford, sightsee or travel to Montreal. Philip Jagolinzer, 216 Luther Bonney, ext. 4304, is contact for interested parties.

\*\*\*

James V. Sullivan, ext. 4172, is arranging for group subscriptions to a variety of Portland Symphony Orchestra programs this year. A group of ten or more qualifies for savings of as much as 30% over the cost of single tickets and guaranteed seating. Subscriptions are available for Symphony Pops on Saturdays, Tuesdays' Classical Series, or the Sunday afternoon Candlelight and Chamber Music Series.



## Marquee

### MONDAY, NOVEMBER 1

ILLUSTRATED LECTURE: Birds of New Zealand, by Professor Charles Huntington of Bowdoin College and Kent Island Ornithological station in the Bay of Fundy, Room 165, Science Building, Portland, 4:30 p.m.

### TUESDAY, NOVEMBER 2

CHILDREN'S OPERA: "Clouds," written by Libbie Perry, conducted by Angela Hendricks, Room 205, Corthell Hall, Gorham campus, 8 p.m.

### WEDNESDAY, NOVEMBER 3

FILM: "Anonymous Was a Woman," Lunch Time Film Series, USM Women's Studies, 12-1 p.m., 306 Payson Smith, free.

### WEDNESDAY, NOVEMBER 3

### and THURSDAY, NOVEMBER 4

FILM: "Hushbands," (1970), John Cassavetes, International Film Series, Wednesday — Bailey Auditorium, Gorham, Thursday — Luther Bonney Auditorium, Portland, 7:30 p.m., \$2/\$1 with USM I.D.

### FRIDAY, NOVEMBER 5

MUSIC: USM Chamber Orchestra, Jerry Bowder, conductor, Woodfords Church, 8 p.m., \$3/\$1.

### FRIDAY, NOVEMBER 5

LECTURES: "Alienation in a Mediated World," (11:30 - 1:00 p.m.) and "I Only Work Here: Mediation and Irresponsibility in the World of Business," (2:40 - 4:00 p.m.), Prof. John Lachs of Vanderbilt University, author of "Intermediate Man," sponsored by Philosophy Department, Phi Kappa Phi and CAS Faculty Development Fund, 165 Science, Portland.

FRIDAY, NOVEMBER 5 AND SUNDAY, NOVEMBER 7  
FILM: "Victor/Victoria," Friday in Portland at Luther Bonney Auditorium, Sunday in Gorham, 10 Bailey Hall, 7:30 p.m. \$1.50/\$1.00

### SATURDAY, NOVEMBER 6

MASTER CLASS WITH EILEEN FARRELL: Co-sponsored by Maine Chapter of National Association of Teachers of Singing (and USM Department of Music), 205 Corthell, Gorham, 10:00 a.m. to 3:30 p.m., open to public, \$10 NATS members, \$15 non-members.

### SATURDAY, NOVEMBER 6

MUSIC: Junior recital, Keith Crook, guitar, and Carl Dimow, flute, 205 Corthell, Gorham, 8 p.m., free.

### MONDAY, NOVEMBER 8

BLOOD DRIVE: Intown Learning Center Library, sponsored by Student Involvement Group, register with lobby receptionist.

MONDAY, NOVEMBER 8 THROUGH THURSDAY, NOV. 18

ART: Frank Angelo Ferrandino, senior exhibit, Center Gallery, Student Center, Gorham.

### TUESDAY, NOVEMBER 9

MUSIC: Studio Recital, voice students of Linda Freeman and Stewart Shuster, 205 Corthell, Gorham, 8 p.m., free.

### WEDNESDAY, NOVEMBER 10

FILM: "School as Influencers," "Colleges as Influencers," Lunch Time Film Series, USM Women's Studies, 12-1 p.m., 306 Payson Smith, free.

WEDNESDAY, NOVEMBER 10 AND THURSDAY, NOVEMBER 11

FILM: "Signs of Life," (1968), Werner Herzog International Film Series, Wednesday — Bailey Auditorium, Gorham, Thursday — Luther Bonney Auditorium, Portland, 7:30 p.m., \$2/\$1 with USM I.D.

### FRIDAY, NOVEMBER 12

MUSIC: Faculty Concert Series, Rhonda Martin, flute, Robert Glover, piano, John Boden, horn, 205 Corthell, 8 p.m., \$5/\$2.50.

FRIDAY, NOVEMBER 12 AND SUNDAY, NOVEMBER 14

FILM: "The Last Wave," Friday in Portland at Luther Bonney Auditorium, Sunday in Gorham, 10 Bailey Hall, 7:30 p.m., \$1.50/\$1.00.

### SATURDAY, NOVEMBER 13

MUSIC: Senior Recital, Melody Tibbetts, clarinet, 205 Corthell, 8 p.m., free.

## Emergency Chairs

We now have two emergency chairs for the evacuation of handicapped persons. Chairs are located on each campus in the Department of Police and Safety.

If you become aware of an emergency situation where a chair is needed, call Police and Safety at Ext. 5211. An officer will be sent to the scene.

Kathleen H. Bouchard, director of Equal Employment Opportunity, reports that several projects and purchases were completed last year. They include installation of more visible signs for handicapped access, automatic door openers for seven locations, two speech compressors to help visually handicapped students and minor alterations to buildings.

Currents will update the community on these projects in a later issue.