

2007

## Recommendations for Future Restoration and Management Efforts for Mill Brook, Westbrook, Maine: Appendix C. Preliminary Culvert Photos

Casco Bay Estuary Partnership

Follow this and additional works at: <https://digitalcommons.usm.maine.edu/cbep-publications>

---

### Recommended Citation

Casco Bay Estuary Partnership. (2007). Recommendations for Future Restoration and Management Efforts for Mill Brook, Westbrook, Maine: Appendix C. Preliminary Culvert Photos. [Appendix]. Portland, ME: University of Southern Maine, Muskie School of Public Service, Casco Bay Estuary Partnership.

This Report is brought to you for free and open access by the Casco Bay Estuary Partnership (CBEP) at USM Digital Commons. It has been accepted for inclusion in Publications by an authorized administrator of USM Digital Commons. For more information, please contact [jessica.c.hovey@maine.edu](mailto:jessica.c.hovey@maine.edu).

**Mill Brook  
Westbrook**

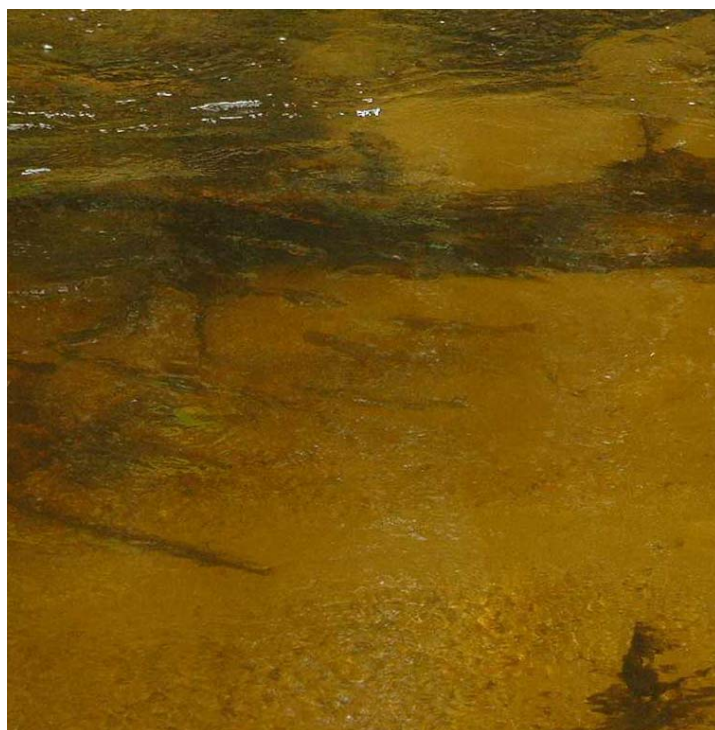
**Preliminary Culvert Photos  
2003 & 2007**



## Rte 302



Shallow water (at certain times of year) and flat, concrete bottom.



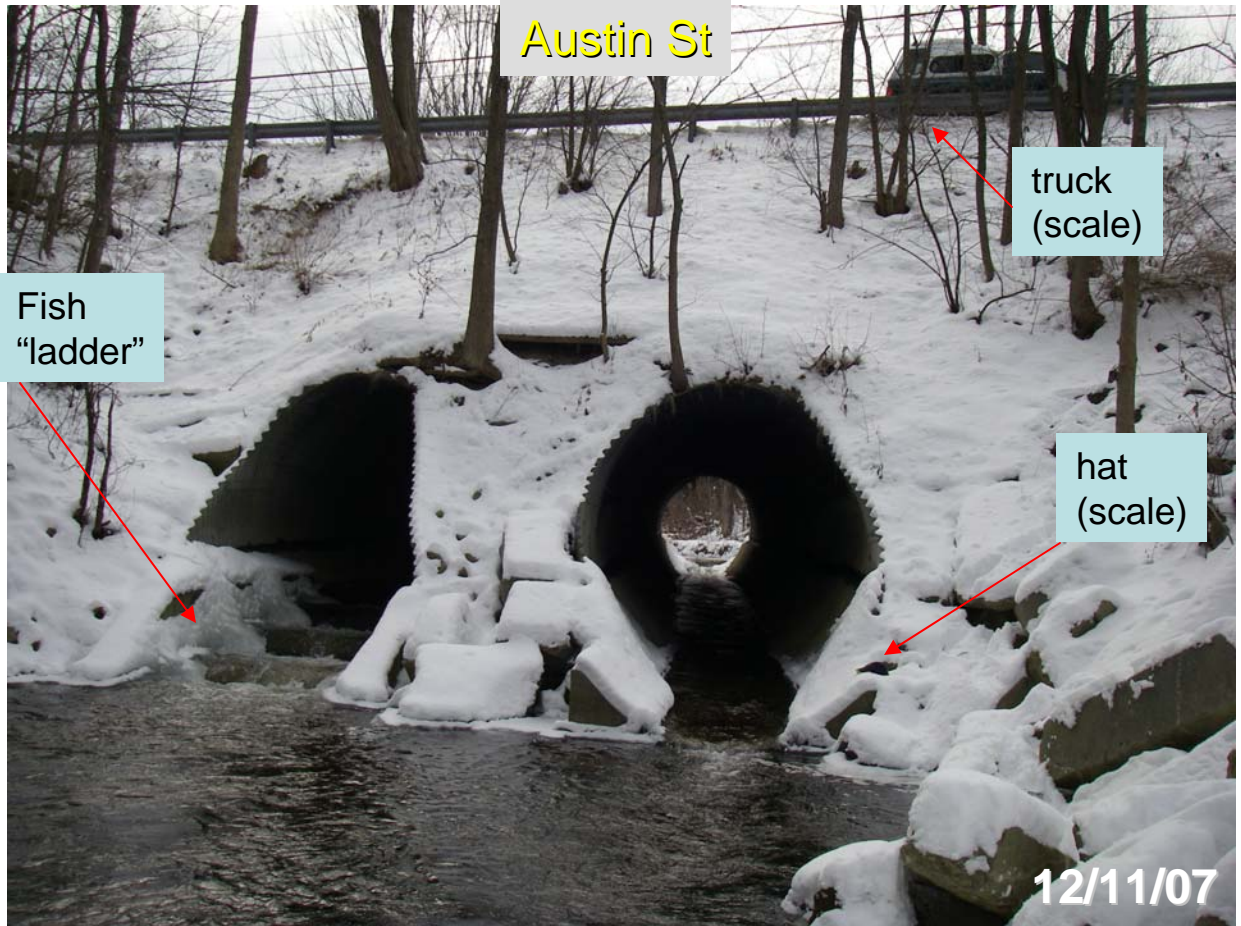
Alewives below a debris jam near Rte 302 -- 5/31/03

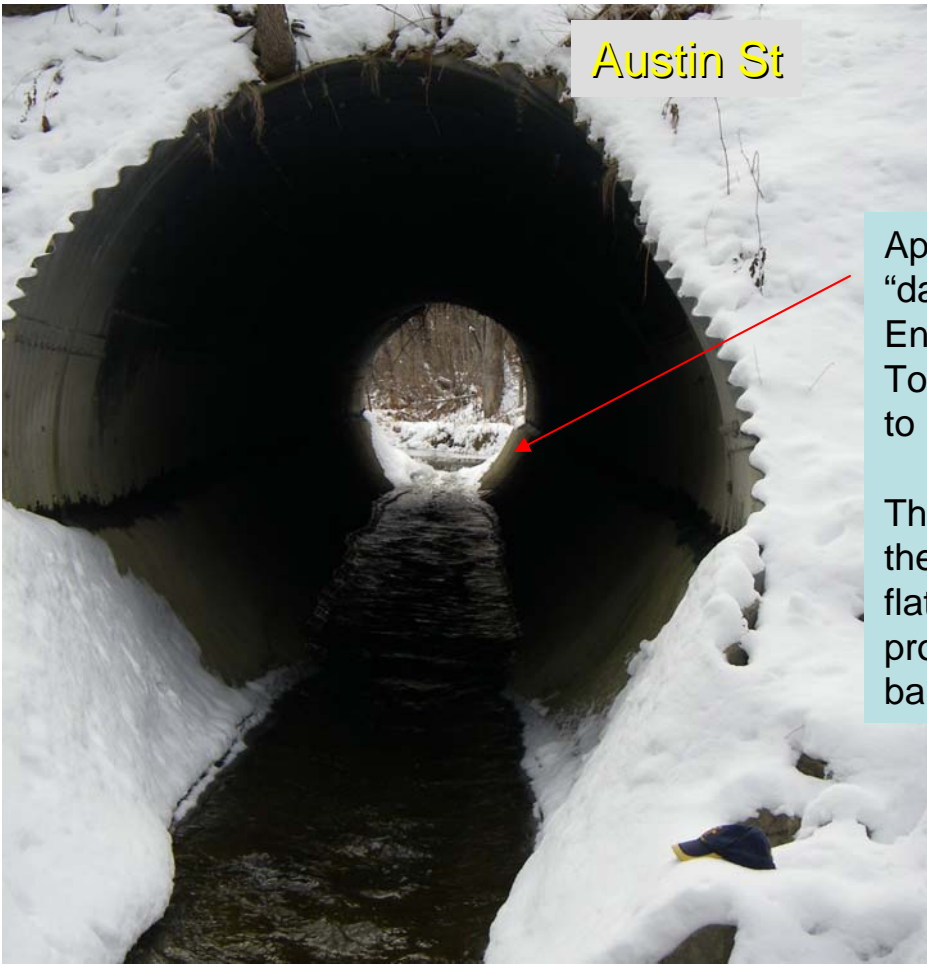
Rte 302



12/11/07







Austin St

Apparent, engineered log "dam" placed at upstream End of right culvert. Appears To be there to encourage fish to use other culvert.

This is a good idea. Still, the left culvert bottom is flat concrete and may still prove to be somewhat of a fish barrier.



Unimpeded culvert opening ?  
Couldn't tell for sure?

12/11/07

## E. Bridge St.



alewives

Photographs of the culverts underneath Bridge Street: A) taken on May 20, 2003; and B-C) taken on July 14, 2003.

