

1972

## Umpire 1972

University of Maine, Portland-Gorham

Follow this and additional works at: [https://digitalcommons.usm.maine.edu/archives\\_yearbook](https://digitalcommons.usm.maine.edu/archives_yearbook)

 Part of the [History Commons](#)

---

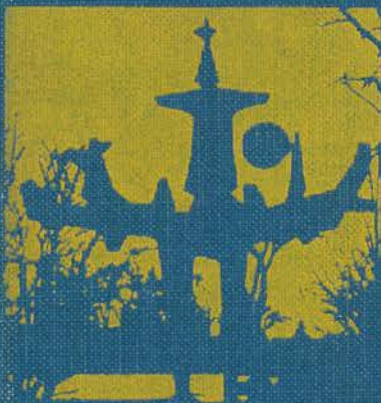
### Recommended Citation

University of Maine, Portland-Gorham, "Umpire 1972" (1972). *Yearbooks*. 51.  
[https://digitalcommons.usm.maine.edu/archives\\_yearbook/51](https://digitalcommons.usm.maine.edu/archives_yearbook/51)

This Book is brought to you for free and open access by the University Archives at USM Digital Commons. It has been accepted for inclusion in Yearbooks by an authorized administrator of USM Digital Commons. For more information, please contact [jessica.c.hovey@maine.edu](mailto:jessica.c.hovey@maine.edu).



*University of Maine at Portland - Gorham*



72



# UMPIRE PRODUCTIONS

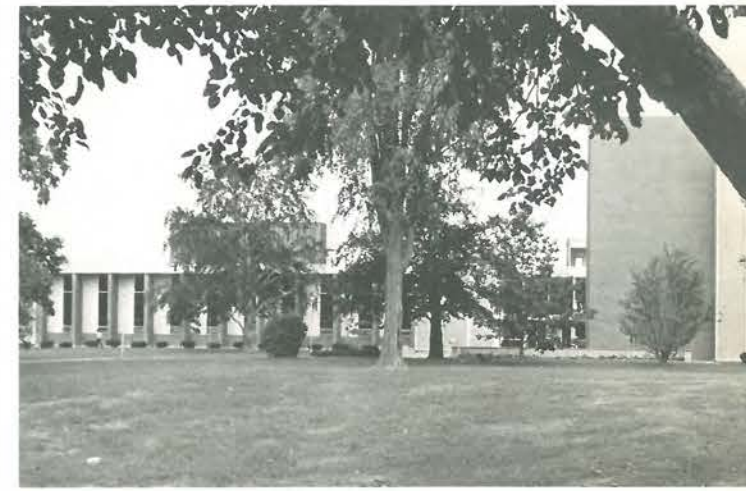
presents the

## 1972 UMPIRE

David Holbrook	Editor
Nancy Doboga	Assistant Editor
Stephen Geer	Sports Editor
Richard Kochis	Photographer
Jeannine Bisson	Business Manager

**The University of Maine, Portland-Gorham  
Portland Campus  
1971-1972  
final edition**









What is a campus community? The University of Maine, Portland-Gorham, like any university, is a lot of things. Campus life here is at a minimum, but that seems to be a necessary sacrifice on a commuter based campus. Meeting people and learning names is a formality we seldom have time for. In our daily routines we do meet faces, faces of feeling and thought. On the next few pages are a few of the faces and feelings we have been able to capture this year. It is our hope that in these faces you will find something you have known; an up time or a downer, a rough time or an easy ride; something that will remind you of your days and nights at UMPG.



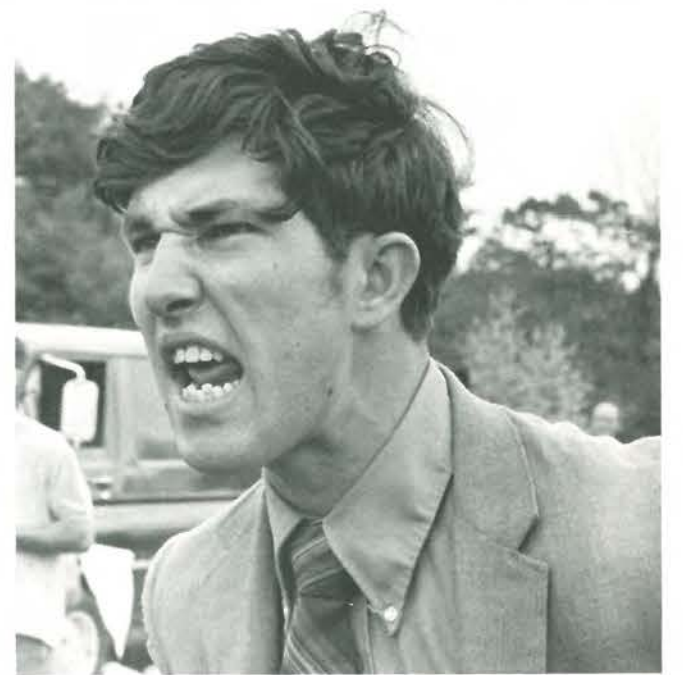




There is feeling on this campus; a campus has as many feelings as there are types of students. Once in a while there is the inevitable conflict, but conflict is necessary for change and changes are what life is all about. UMPG, a merged university system, is undergoing many changes and conflicts. Each member of the community has to make the adjustment. The future direction and success of the system requires everyone's concern and an ability to guide and be guided through the pragmatic process of trial and error.











The success of the University of Maine, Portland-Gorham, as the southern Maine institution of higher learning is emerging. Let us not congratulate ourselves too soon, we still have much to learn and many conflicts to resolve, and it is for time, and faces, to decide whether the changes have been beneficial.



## THEATER



## CHOIR



## BUSINESS CLUB



r to l: D. MacVane; L. Babbidge; P. McGinnis, Treasurer; L. Labonte; R. Fournier, President; T. Schildroth, Assistant Secretary; J. Gray; W. Rhoda.

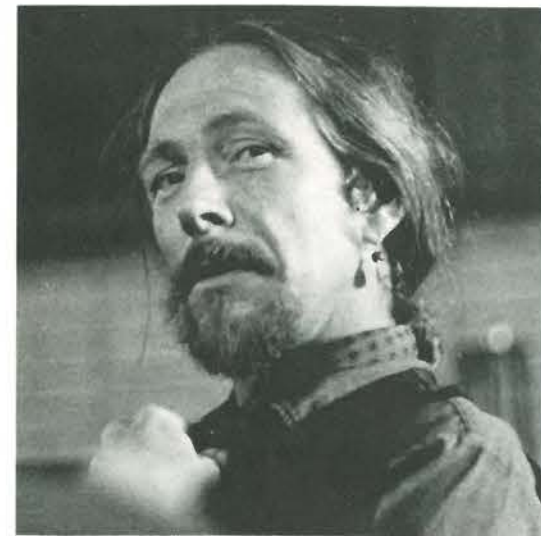
The UMPG Business Club has consistently been an active group on this campus. From supplying basketball game programs to sponsoring field trips and speakers, the members have obtained satisfaction from both their projects and social gatherings. Disagreements may have risen, but, a commitment to the group has seen the club through changes both internal and those of a general social nature. The graduating members can always feel that they have in some way tried to present their views and priorities to the university community.



## SPEAKERS



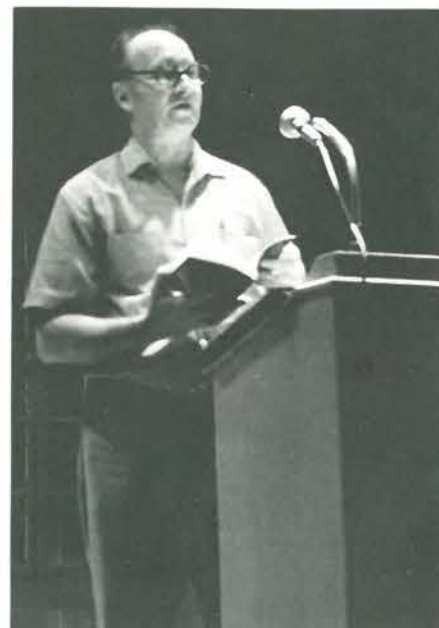
Pete McClosky



Gary Snyder



Erica Jong



John Logan



## ORIENTATION





# STUDENT UNION







# CONCERT

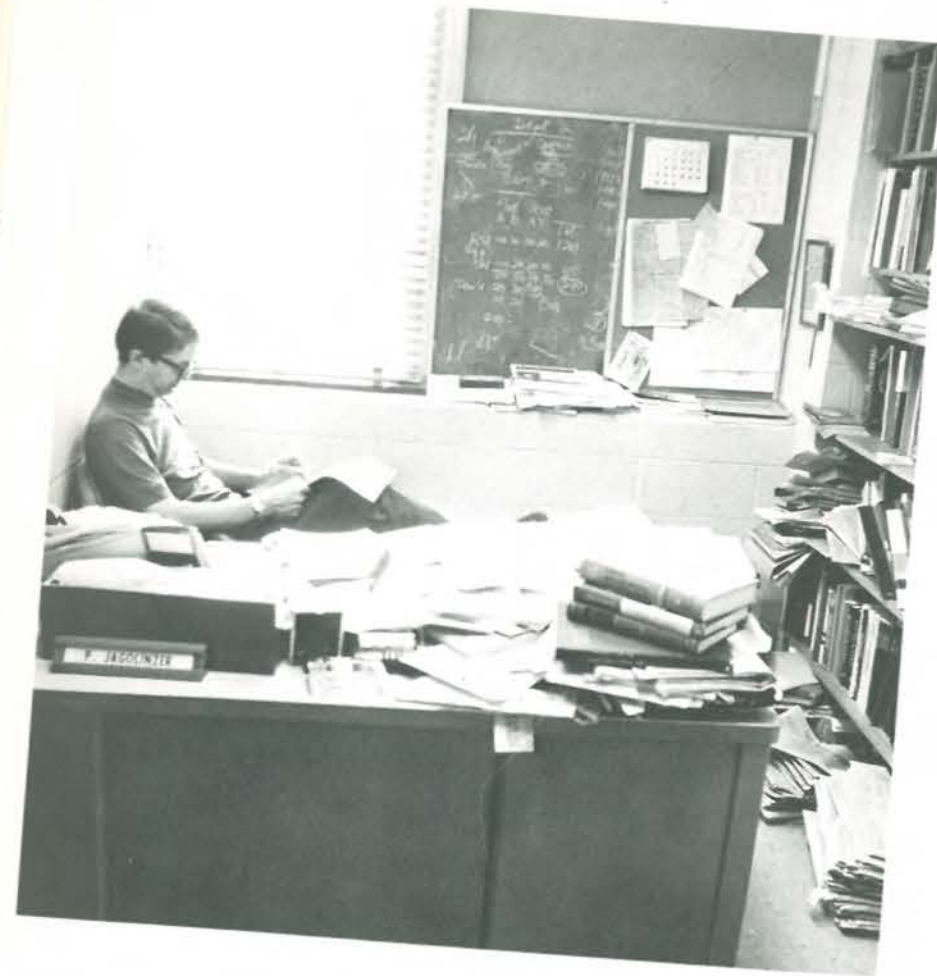


A Cappella Choir

# CAFE PARTY





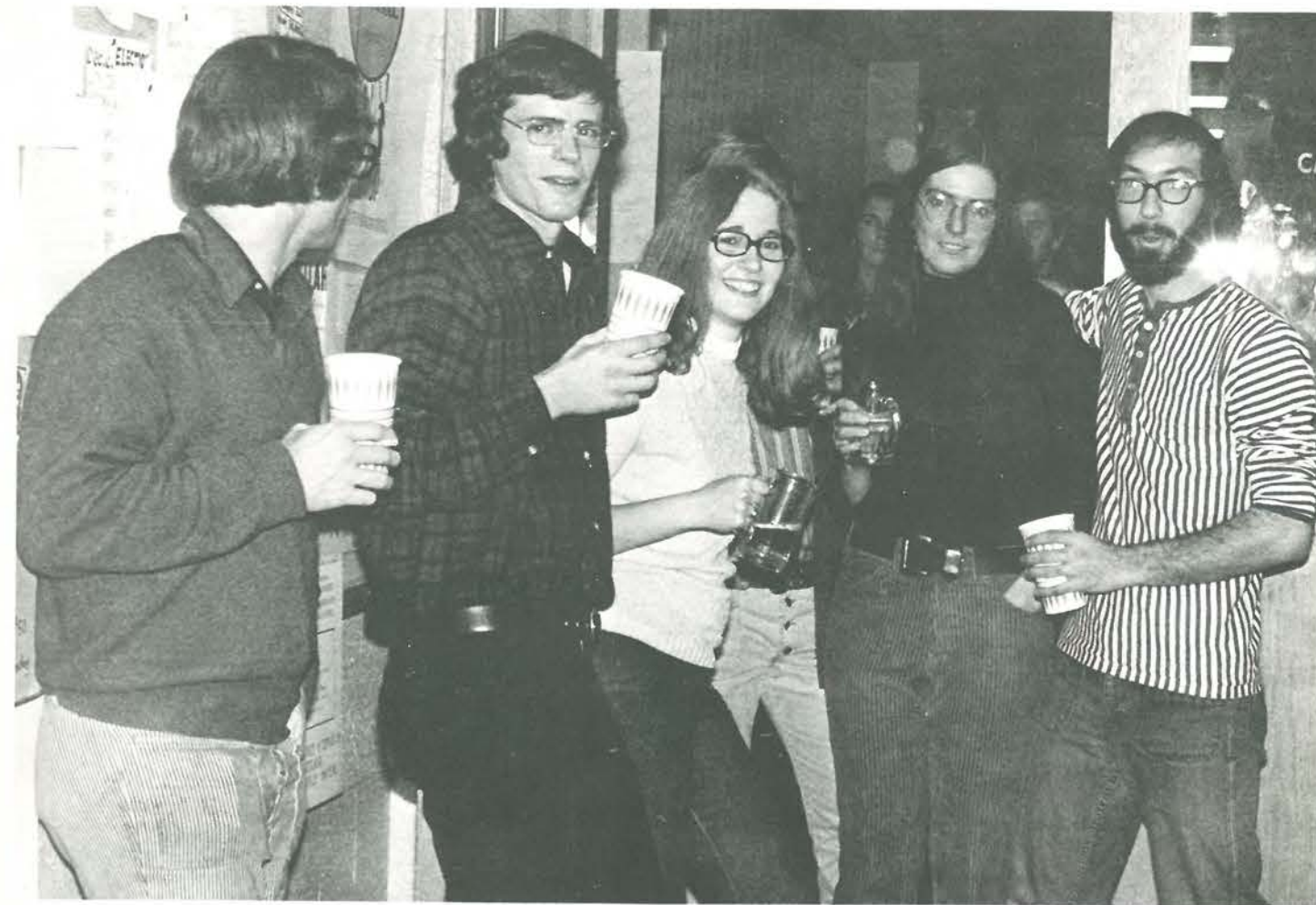


... and finally  
Intercession.

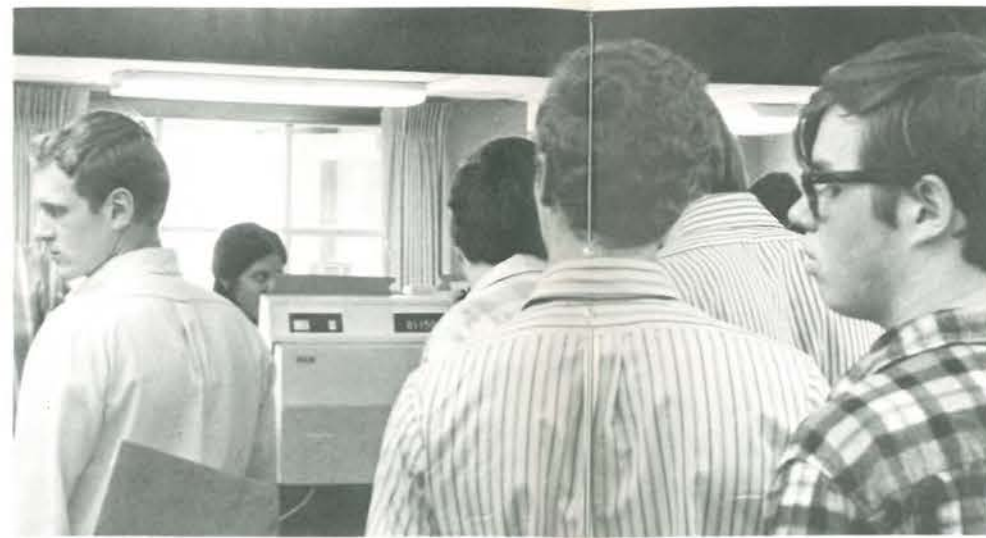




## THE KEG PARTY









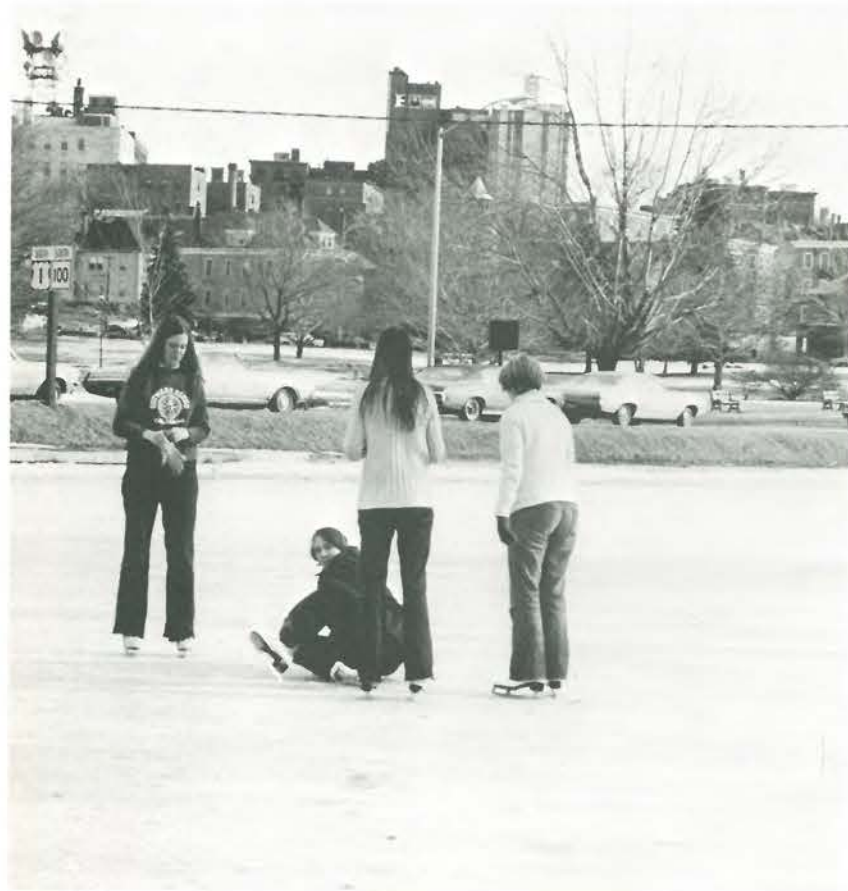


# W I N T E R C A R N I V A L



The lack of snow didn't stop PoGo students from having a great Winter weekend. Jamie Brockett began the weekend on perhaps its highest note — with friendly rap, and effortless music. Saturday the hockey game was cancelled due to bad ice, but the Deering Oaks skaters found the ice rather nice. Greasers gathered at Portland's gym for a trip back to the 50's courtesy of Smokey Joe. Sunday's concert found spirits dampened by a deluge which soaked the crowd before it had a chance to take cover. That and a 1½ hour delay in the concert made for an unruly crowd. Geils was short and strong, keeping the crowd on its feet during his concert. All in all, there was no lack except for snow.





**TIMES THEY ARE A CHANGIN'**





Winter Carnival with no SNOW.



CRAZY HORSE



J.  
G  
E  
I  
L  
S  
  
B  
A  
N  
D



NORWESTERN  
WOOD  
Semi-Formal  
Friday DEC. 20<sup>th</sup>  
at the PORTLAND CLUB  
8 to 1:00  
OPEN TO ALL COLLEGES  
CLMP

REMEMBER?





## IN MEMORIAM



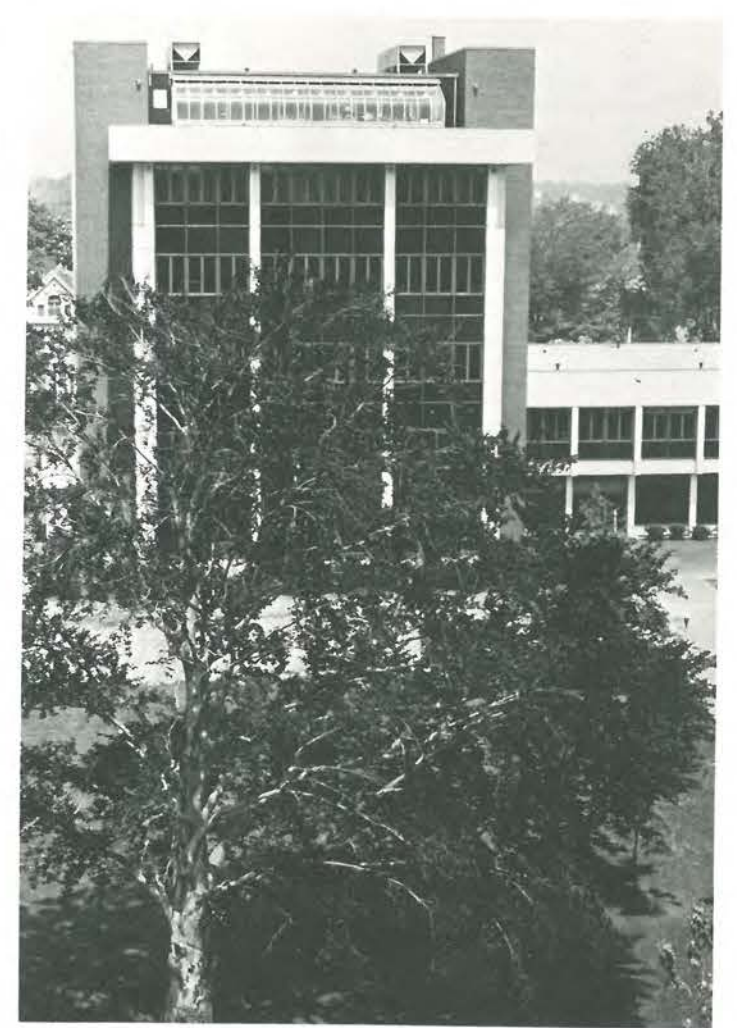
ROBERT "RUSTY" VENNELL  
1948-1971



He served as Chancellor of Tau Epsilon Phi for two years. Rusty was the person who brought me into the fraternity and served as my "Big Brother". After joining TEP, Rusty and I enjoyed a close personal relationship, a friendship that I have shared with few others. He enjoyed life, not letting his studies get in the way of having a good time. He was dedicated to helping others and I was not the sole beneficiary. It need not even be said of him that his deeds will live after him. The future achievements of many will be attributed to Rusty's influence. My Brother, friend, and fellow Psychology student is now dead after a critical operation during intercession. What better tribute to him than to remember forever that which he stood for in life. His brothers, his family, and his many friends will miss him dearly. May they only achieve in their lives the understanding, love and laughter which he did in his.

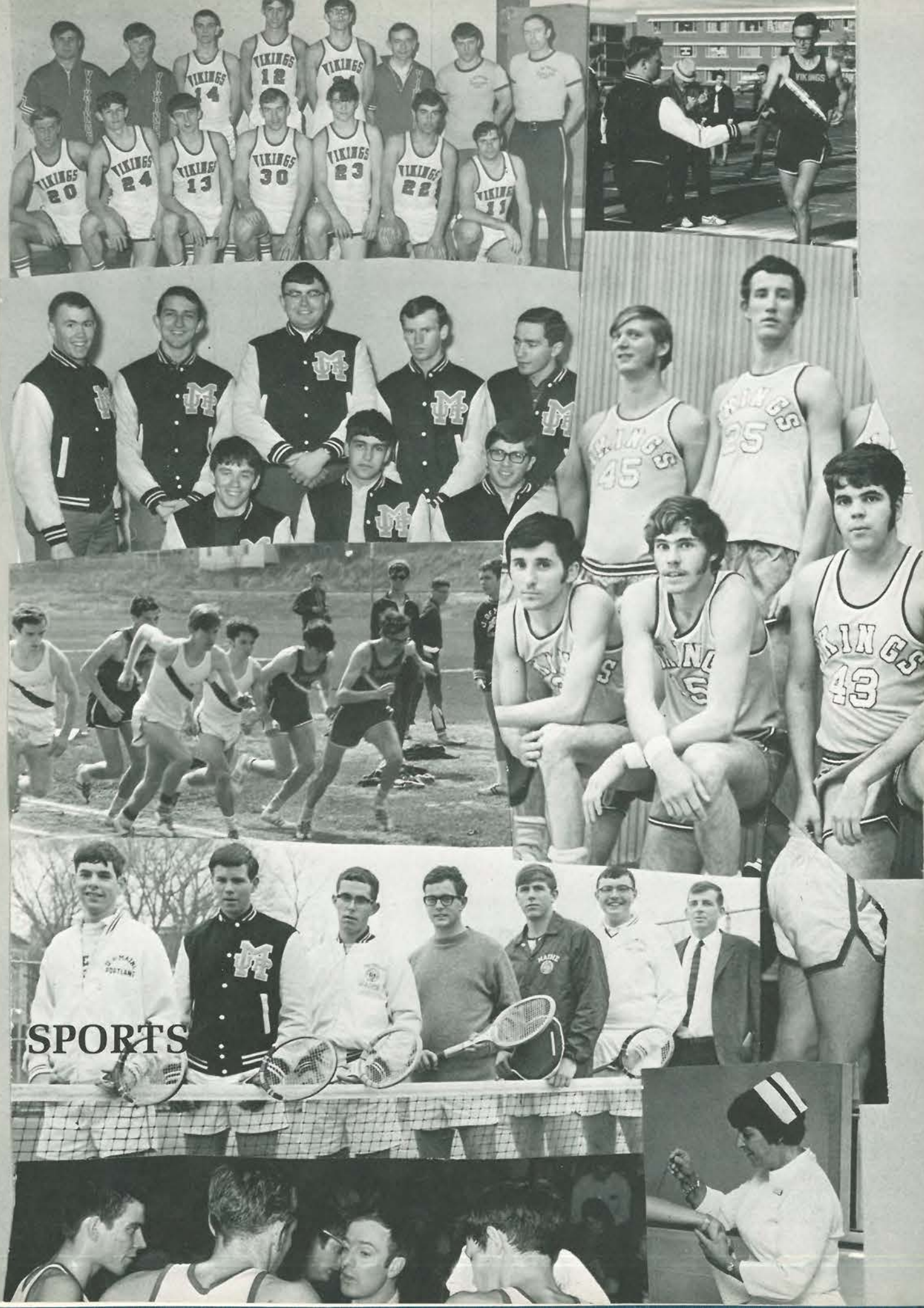
Eddie L. Beard







# CROSS COUNTRY



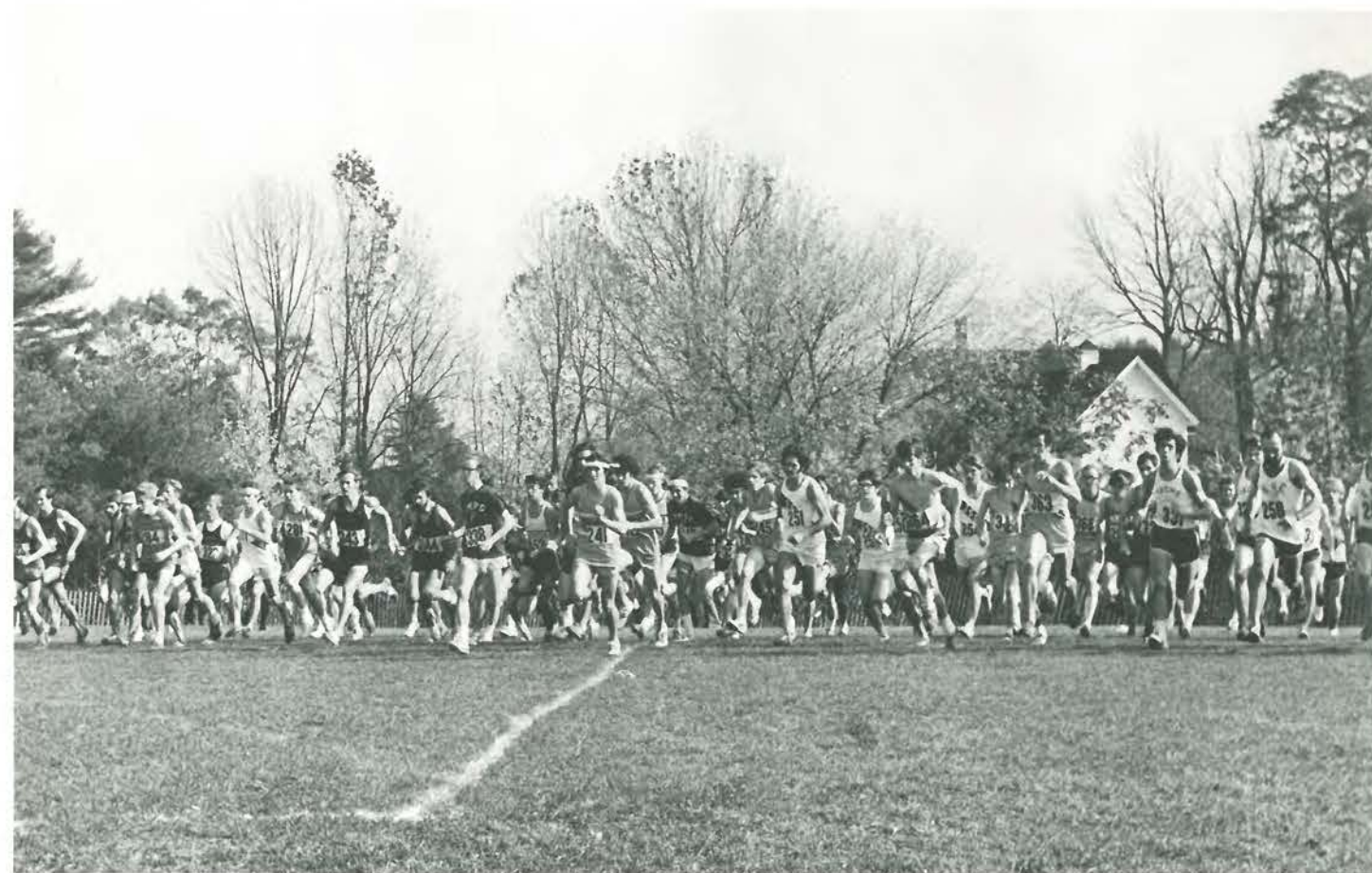
l to r:  
 Ron Kelley  
 Marty Callahan  
 Gary Davis  
 Bob Doane  
 Brian Gillespie  
 Rick Willey  
 Gerry Myatt  
 Coach Thomas





Cross Country Statistics  
Coach Don Thomas

Sept. 25	UMPG 35 Colby 24
Oct. 2	Keene State 20 SMVTI 75 UMPG 44
Oct. 6	UMPG 20 Gordon College 36
Oct. 16	Boston State Invitational UMPG 14th out of 18 schools
Oct. 23	UMPG Invitational UMPG 7th out of 14 schools
Oct. 26	UMPG 15 Nasson College 40
Nov. 6	NESCAC Championship at Keene State UMPG 6th out of 12 schools
Nov. 8	NEIAAA at Boston State UMPG 26th out of 30 schools
Nov. 10	NAIA at Gordon College UMPG 8th out of 10 schools



## BASKETBALL

Front Row: Phil Page; Matt Donahue; Rick Simonds, Capt;  
Andy Dufort, Capt; Jim Graffam, Capt; Kevin Lecuyer;  
Micheal Lavigne. Back Row: Coach Sturgeon; Richard Bray,  
Statistician; Bud Mosley, Trainer; Jeff Scott; David  
Tamulevich; Faye Morrill; Bob Bradbury; Jay Lemont; Larry  
Leone, Manager; Greg Jordan, Manager.



### TEAM ROSTER

	Class	Height
Bob Bradbury	Jr.	6'3"
Andy Dufort	Sr.	6'2"
Mike Lavigne	Jr.	6'1"
Kevin Lecuyer	Jr.	5'7"
Jay Lemont	Jr.	6'2"
Fay Morrill	Soph.	6'7"
Phil Page	Soph.	6'0"
Jeff Scott	Jr.	6'3"
Rick Simonds	Sr.	5'11"
Dave Tamulevich	Jr.	6'4"

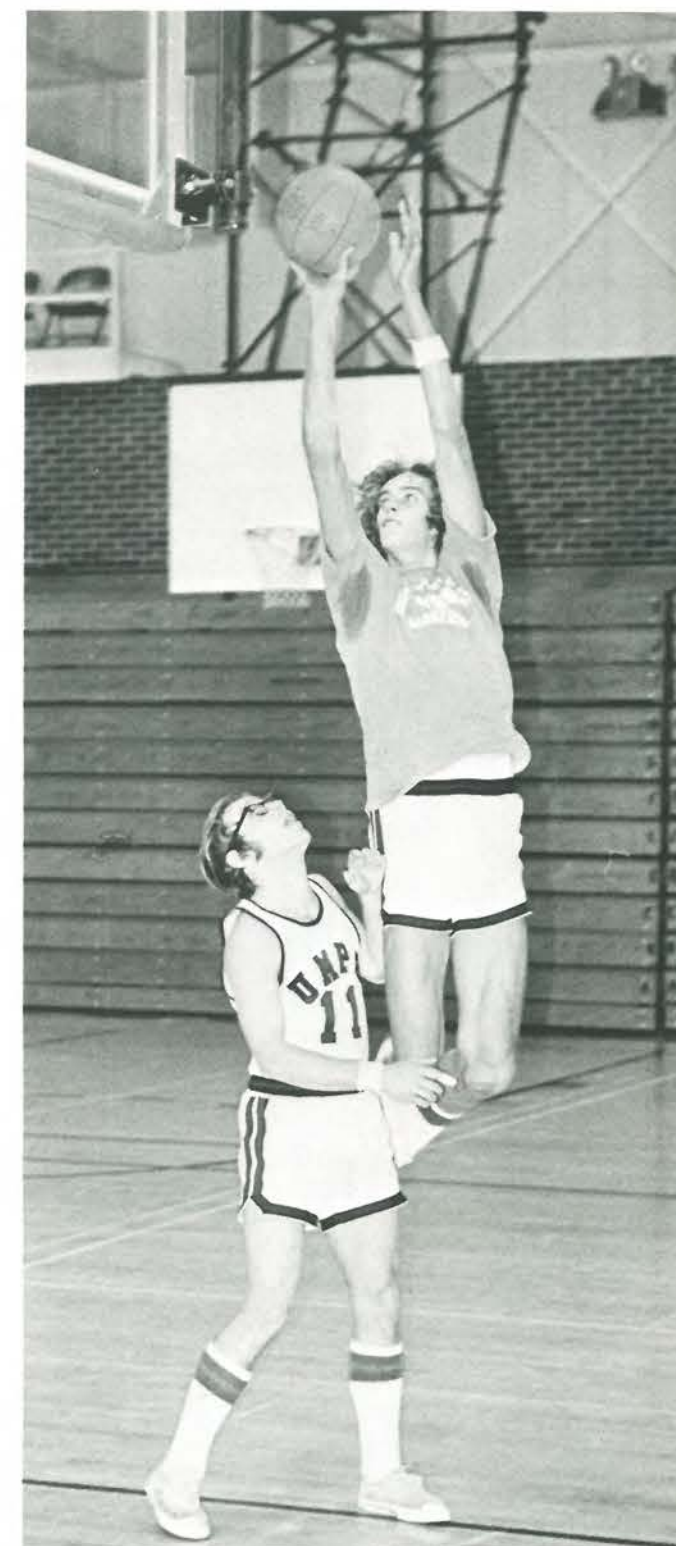




# Basketball Statistics Coach Sturgeon

UMPG	96	at	St. Francis	104
UMPG	80	at	Castleton State	90
UMPG	121	at	Lyndon State	90
UMPG	94		Sulfolk Univ.	80
UMPG	86		Bently College	104
UMPG	80	at	Keene State	94
UMPG	93		Husson College	88
UMPG	92	at	Boston State	98
UMPG	59		Salem State	63
UMPG	64	at	U of M Farmington	68
UMPG	70		Plymouth State	69
UMPG	81	at	Salem State	72
UMPG	58		Keene State	79
UMPG	94	at	Husson College	122
UMPG	79	at	Worcester State	92
UMPG	58	at	Bryant College	73
UMPG	74	at	Plymouth State	77
UMPG	73		Boston State	66
UMPG	75		Rhode Island	90
UMPG	53		Nasson College	51
UMPG	90	at	Eastern Nazarene	104
UMPG	61		U of M Farmington	73

Final Standings — WON - 7, LOST - 15







L to R — Front Row: Kirk Rau; David Halligan; Jim Mingo, Capt; Mike McGraw, Capt; George Robinson; Karl Farnk; Jason Knight. Back Row: Jerry Young, Trainer; Steve Doyle; Dale Bragg; Richard Simonds; Roger Young; Earl Foley; Ron Hunt; David Carlson; Phil Giorgetti; Gary Mingo; John Picone; Dennis Ela; Coach Bouchard.

## SOCCKER



Coach "Joey" Bouchard



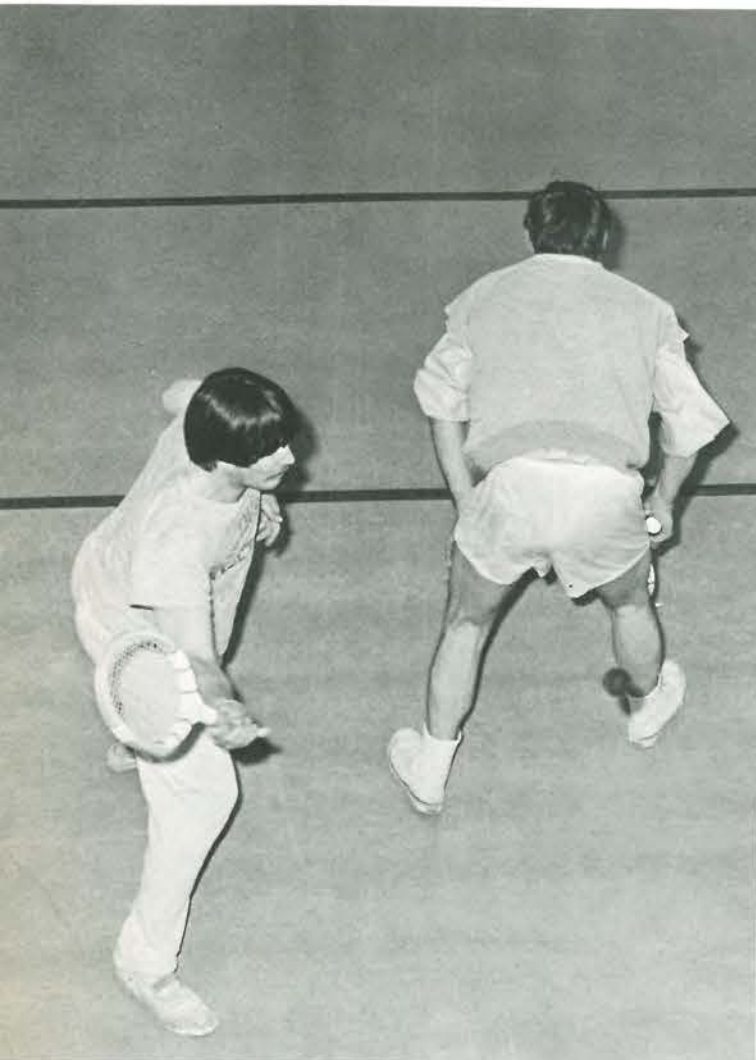
### Soccer Statistics Coach Bouchard

		UMPG	OPP.
Sept. 25	at Lyndon State	6	0
Sept. 28	at Eastern Nazarene	1	4
Oct. 2	Castleton State	1	0
Oct. 5	at Salem State	3	2
Oct. 9	Plymouth State	2	3
Oct. 13	U.M. Farmington	6	1
Oct. 16	Fitchburg State	7	0
Oct. 19	at Keene State	2	5
Oct. 23	Johnson State	2	3
Oct. 26	at Nasson College	4	4
Oct. 30	at Husson College	1	2
Nov. 3	St. Francis College	4	1
Nov. 6	NESCAC Playoffs		
Nov. 12-13	NAIA District 32 Playoffs		

Final Standings — WON - 6, LOST - 5, TIED - 1







## HOCKEY CLUB



1971-1972 UMPG Hockey Club

Kneeling (L to R): Rusty Winters; Don Lamontagne; Waring Stearns; Bob Bennett; Ron Young; Greg Gray; Bob Holden. Standing: Gary Munsen; Jim Morrison; Mike Hogan; Tom Patterson; Bob Goddard; Don Dufresne; Bob Pontbriand; Bob Rhoades; Coach Lee J. Roy. Missing from picture: Bob Blais; Dave Bouffard; Kit Dover; Don Holden.

### Season Results

In its first and last season, the UMPG hockey club team ended with a very respectable record. Disregarding two scrimmages with the Portland Merchants, a semi-pro team, the Pogoans finished with a 3 win, 4 losses, and 1 tie record. Wins were against Orono 8-6, North Yarmouth Academy 3-0, St. Francis College 5-3, and the losses were to New Hampshire Vocational College, 6-3, and 7-1; Bridgton Academy 7-0 and Thomas College 7-1. The line tie was against Thomas College 7-7.

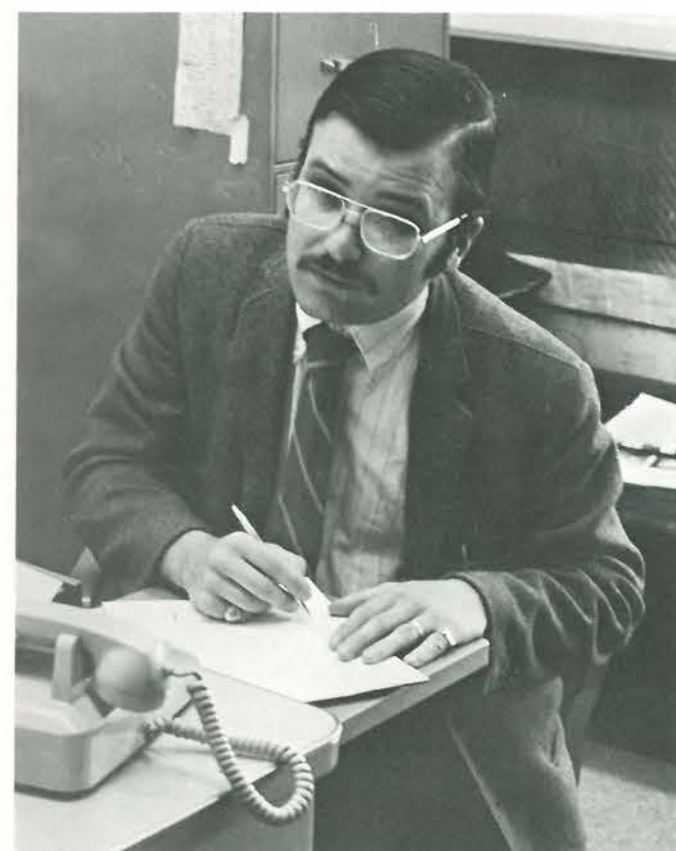




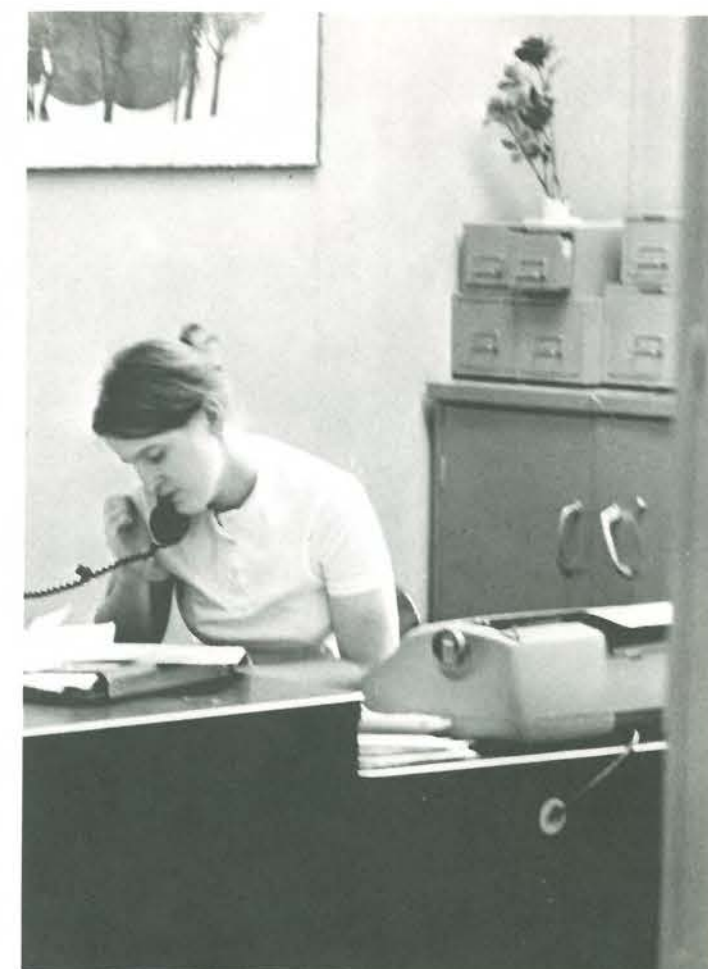
## BASEBALL













## COUNCIL OF NURSING STUDENTS





# CAF 102





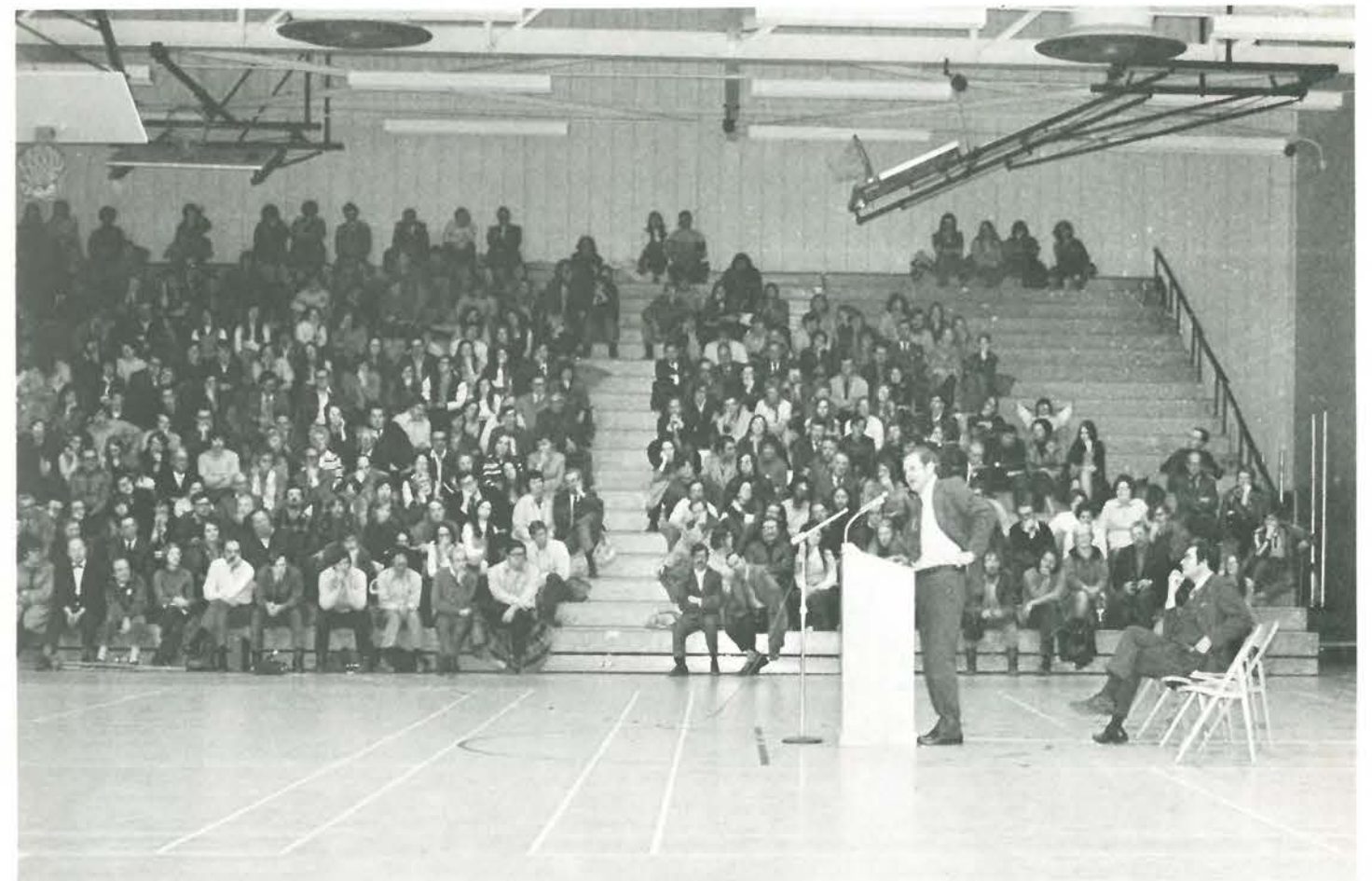
## SWALLOW



## PAT PAULSEN



## JACK ANDERSON





SAND



MARATHON PLAYERS

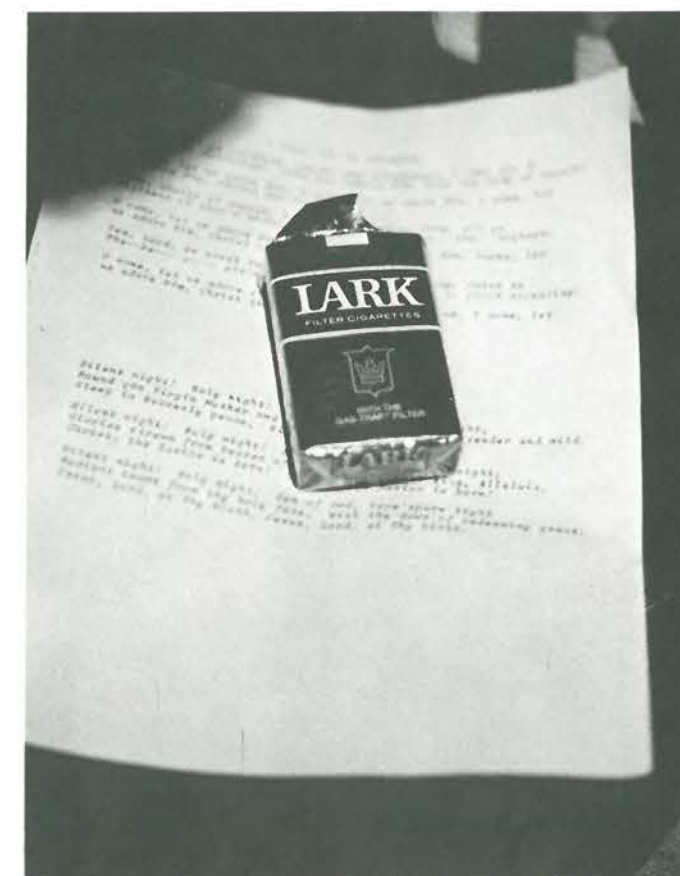


BEGGAR'S OPERA



WAX  
MUSEUM













## STUDENT COMMUNICATIONS BOARD



l to r  
Nate Cote  
Allan Gibbons  
Rick Scala  
Art Piteau  
Steve Rankin  
Mary Drysdale

## STUDENT ACTIVITIES BOARD















# MAINE DAY







Steve Geer, Sports Editor

## UMPIRE STAFF

Jean Bisson, Business Manager

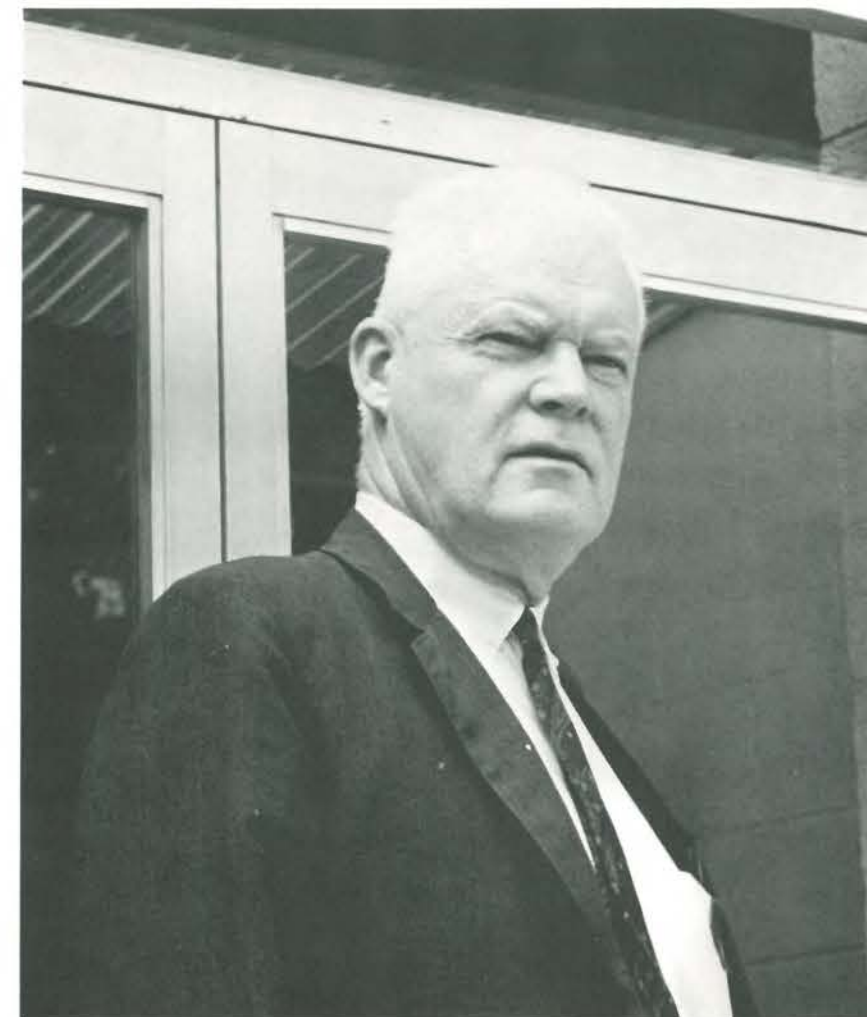


Rick Kochis, Photographer

Nancy Doboga, Assistant Editor  
Dave Holbrook, Editor



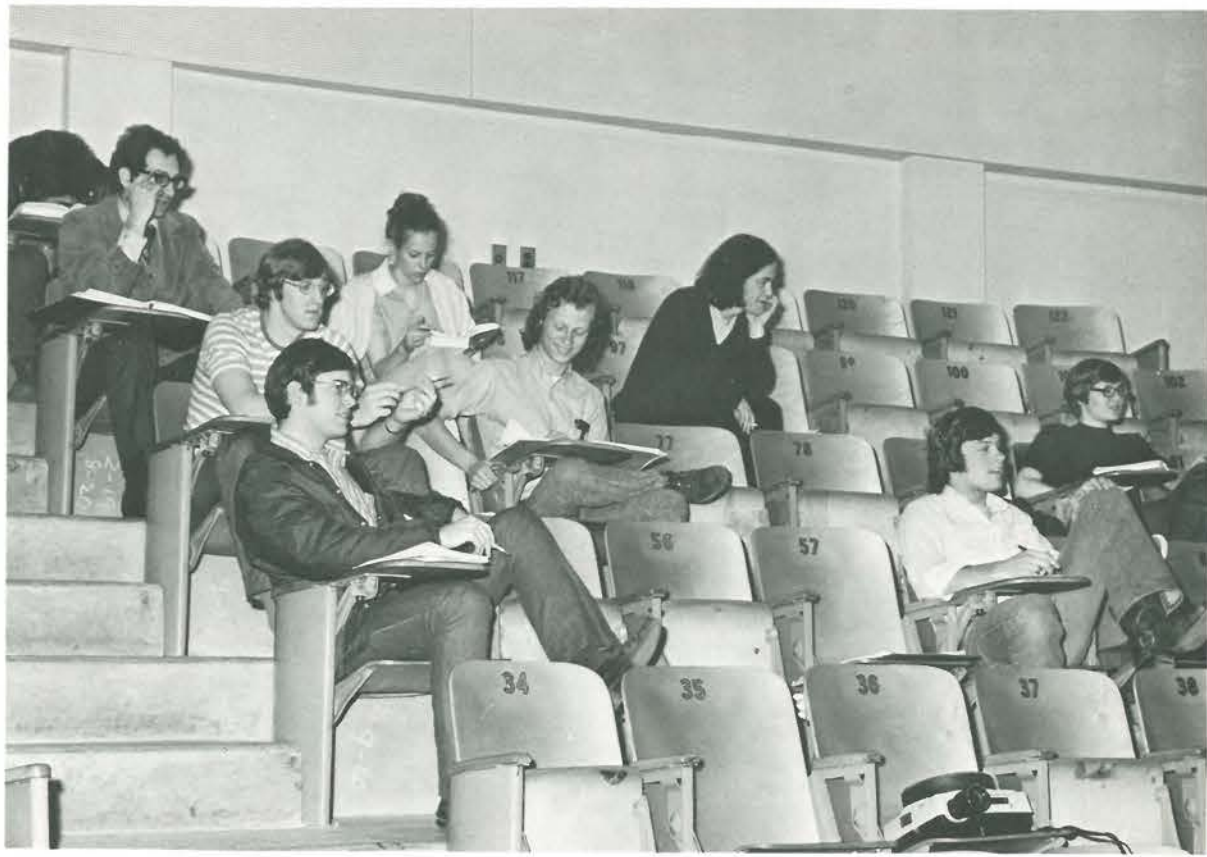




### Harold M. Lawrence

This year Harold Lawrence retired after many years of service at the University of Maine. His record is outstanding. He served as Registrar, Bursar, Superintendant of Buildings and Grounds, and Department Head and Instructor in Accounting for Portland Junior College and the University of Maine in Portland until 1963. He served as Registrar and Bursar for UMP until 1967, and as Bursar to 1970. After the merger, he served as Business Manager for the University of Maine, Portland-Gorham, until this Spring. He will be greatly missed and remembered by those who have worked and studied with him. On behalf of the campus community, we wish him health and happiness in his retirement.





**GOLF  
TEAM**



# SENIORS

This year many outstanding student leaders will graduate. These students have built the foundation necessary for successful student participation in University affairs. This is not to say that the rest of the class has not participated, but the few faces we've singled out here are some of the exceptional ones. I'm sure the entire community extends their thanks and best wishes for their dedication and a job well done, we do. These are the faces of leaders:



Christopher Babbidge; B.A. — History, Circle K, Outing Club, Golf Club, Owls & Eagles, Winter Carnival Torch-Bearer, Big Brother Program.  
Elizabeth Howard; B.S. — Nursing, Council of Nursing Students.  
Elaine Barter; B.S. — Education, Young Democrats (Sect.).  
Susan Bean; B.A. — Social Welfare, Phi Mu, Pegasus, Senior Class Treasurer.  
Eddie Beard; B.A. — Psychology, Young Democrats, Tau Epsilon Phi, Literary Club, Intramural Basketball, Softball, & Football, Student Senate, Viking Editor, Campus Council, Stein Columnist, Chancellor's Task Force, Governance Review Committee, Liberal Arts Search Comm., Liberal Arts Procedures Comm., UMPG Cadet Corps, Who's Who in American Schools and Colleges.  
Peter Bickford; B.S. — Education, Intramural Basketball & Softball.



Charles Bitler; B.S. — Business, Treasurer 2 Yr. Class, Business Club, Centaurs, Winter Carnival Advertising Comm.  
Polly Blake; B.S. — Education, Tennis Team.  
Mary Bourgoi; B.S. — Business, Alpha Psi Omega, Newman Club.  
Barry Brown; B.S. — Business, Business Club, Sailing Club, Social Procedures Committee.  
Jane Butterworth; B.A. — English, Owls & Eagles.  
Wanda Clark; B.S. — Nursing, UMANS, Council of Nursing Students.  
Ray Paul; B.A. — History, Owls & Eagles, Vice President — Jr. Class, Ad Hoc Advisory Committee.  
Natalie Coffey; B.S. — Nursing, UMANS, Council of Nursing Students, Chi Omega  
Dawnela Coffin; B.A. — English, Art Theatre.







Carol Comber; B.S. — Education, Owls & Eagles, Association of Women Students, Pegasus.  
Daphne Contraros; B.S. — Education, SEA, Dramatics, Resident Student Government, Intramural Basketball, Parents Day Comm., Chairman of Judicial Board, President and Representative of Hastings Upton.  
David Crowley; B.S. — Business, Business Club.  
John Deetjen; B.S. — Education, President CPU, Intramural Sports, Owls & Eagles.  
Louise Fecteau; B.A. — French, Junior and Senior Class Sect.  
Victoria Ferguson; B.A. — American History, Association of Women Students, Intramural Volleyball.



Andrea Fernald; B.A. — Sociology, Student Senate, College Assembly, Gorham Chorale, Alpha Xi Delta, Intramural Basketball, Student Activities Board, Winter Weekend Chairman, Who's Who Among Students in American Colleges and Universities, Intersorority Council, Parents Day Comm., Freshman Orientation Comm., Hillcrest, Big Sister Program, Search Comm. for Dean of Liberal Studies.  
Roland Fournier; B.S. — Business, Business Club President, SAC Appropriations Comm.  
Ruth Frary; B.S. — Nursing, Owls & Eagles, Alpha Omicron Pi.  
Cecile Gagne; B.A. — Psychology, Cheerleader, Owls & Eagles, Pegasus.  
Stephen Geer; B.S. — Business, Umpire Staff, Track Team.  
Alan Gibbons; B.S. — Business, Sailing Club, Chess Club, Skiing Club, SAC Treas.  
Ronald Gobeil; B.S. — Education, Owls & Eagles, Ed. Forum Comm., Port. School Vol.







Jeffrey Gray; B.S. — Business  
Business Club, Varsity Club, Basketball Team,  
Intramural Basketball.  
Meredith Hewett; B.S. — Nursing,  
Council of Nursing Students, NEA, Mathetai,  
Pegasus.  
Gerald Hillock; B.S. — Business,  
Owls & Eagles, Track Team, Basketball.  
Alex Holt; B.A. — Theatre-Speech,  
Art Theatre, Observer Staff, Viking Staff, Stein  
Staff, Student Senate, Literary Club, Young  
Republicans, Resident Student Government, Dorm  
Activities Board, Comm. of 33, YAF.  
Earl Ireland; B.A. — Political Science,  
Political Science Majors Association, Big Brother  
Program, POGO MOBE.  
Ed Irish; B.A. — History,  
Viking Staff, Student Affairs Committee.



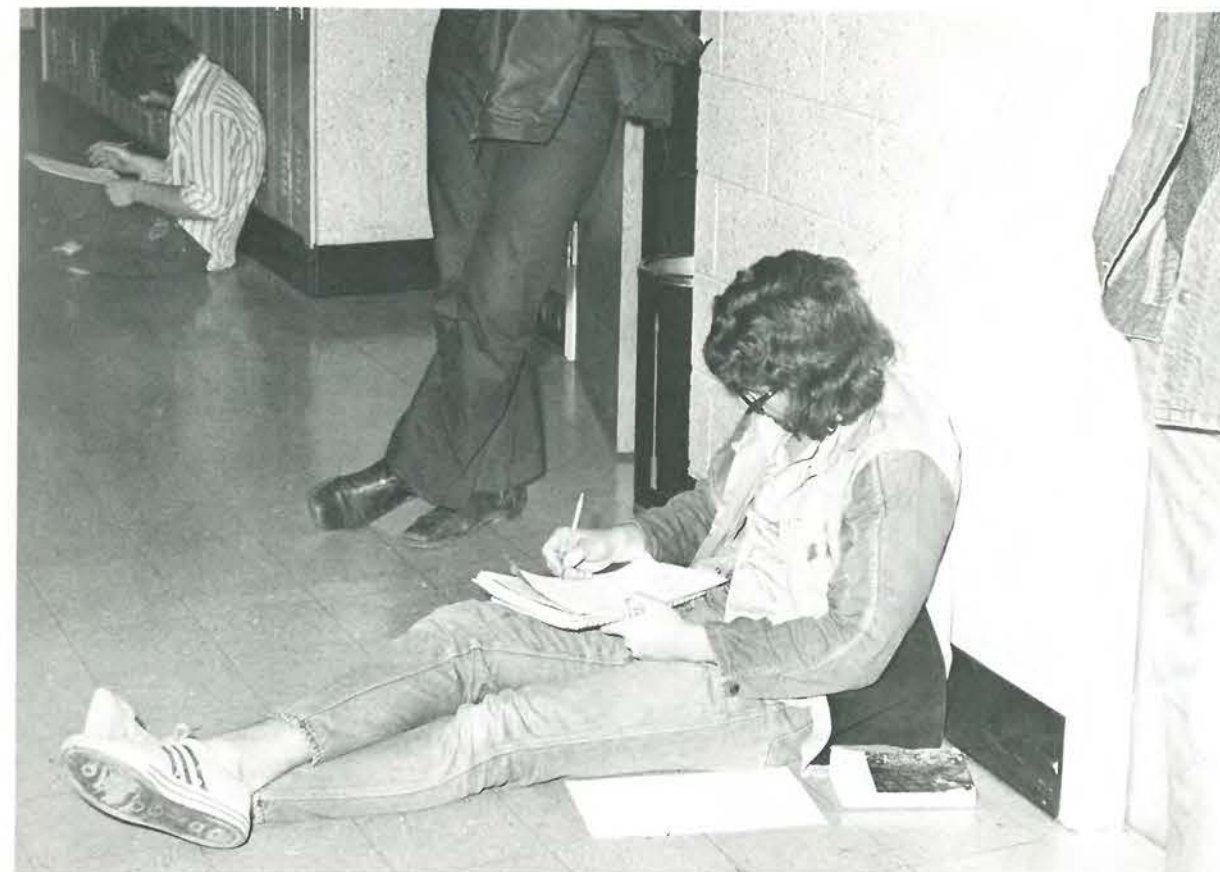
John Kellam; B.A. — Political Science,  
YAF, Political Science Majors Association, Viking,  
V-P Sophomore Class, Jr. Senator, SAC, Who's Who  
in American Colleges and Universities.  
Rick Kochis; B.A. — Philosophy,  
Sailing Club, Philosophy Club, Chess Club, Basketball  
Mgr., Student Activities Board, Ad Hoc  
Advisory Comm. on the Arts, Umpire Photographer,  
Lighthouse Staff, Concert-Lecture Series Comm.  
Larry Leone; B.A. — Political Science,  
Tau Epsilon Phi, Owls & Eagles, Basketball Mgr.,  
Student Senate, University Council, UMPG  
Governance Comm., Political Science Majors Assoc.,  
Sr. Class Treas.  
Odette Levesque; B.S. — Nursing,  
UMANS, Council of Nursing Students.  
Marsha Littlejohn; B.A. — History,  
Association of Women Students, Volleyball Team,  
Big Sister Program.  
Nelma Mason; B.S. — Nursing,  
UMANS, Council of Nursing Students.







Jerry McCann; B.S. — Education, Circle K, Centaurs, Owls & Eagles, Student Union Board, Student Senate, SAC Chairman, Class Officer, Campus Council, Student Rights & Freedoms Comm. Thomas Menna; B.A. — French, French Club, Soccer Club. Carolyn Messa; B.S. — Nursing, Inter-Varsity Christian Fellowship, Student Religious Affairs, Council of Nursing Students. Marty Murphy; B.A. — Political Science, Chairman Political Science Majors Association, Student Senate Presidential Search Comm., Viking Ed., Student Publications Board Chairman, Governors Comm. on Children & Youth, WGAN Drug Abuse Fund. John O'Toole; B.A. — Economics, Business Club, Judicial Comm. Chairman. Anita Pelletier; B.A. — French, French Club, Education Forum. Margaret Quincannon; B.A. — Sociology, Sailing Club.



Suzanne Rand; B.S. — Education, Owls & Eagles, Sophomore Class Sect. Steve Rankin; B.S. — Business, Sailing Club, Crowleys Tea Party Staff, Student Activities Chairman, Stein Staff, Viking Staff, Centaurs. Kathy Regan; B.A. — Sociology, Big Sister Program. Charles Reynolds; B.S. — Business, Business Club. Doris Rocray; B.A. — French, French Club, Volunteer Teaching. Charles Rollins; B.A. — Psychology, Forum Club, Boxing Club, Psychology Club, SCOGIS, Young Democrats, Stein Staff, Big Brother Program. Brenda Sereyko; B.S. — Nursing, Media Committee. Richard Small; B.S. — Business, Big Brother Program, Viking Staff, SAC, Student Senate, Appropriations Comm., Vice-Pres. Sr. Class, Search Comm. for Academic Affairs & Student Affairs.





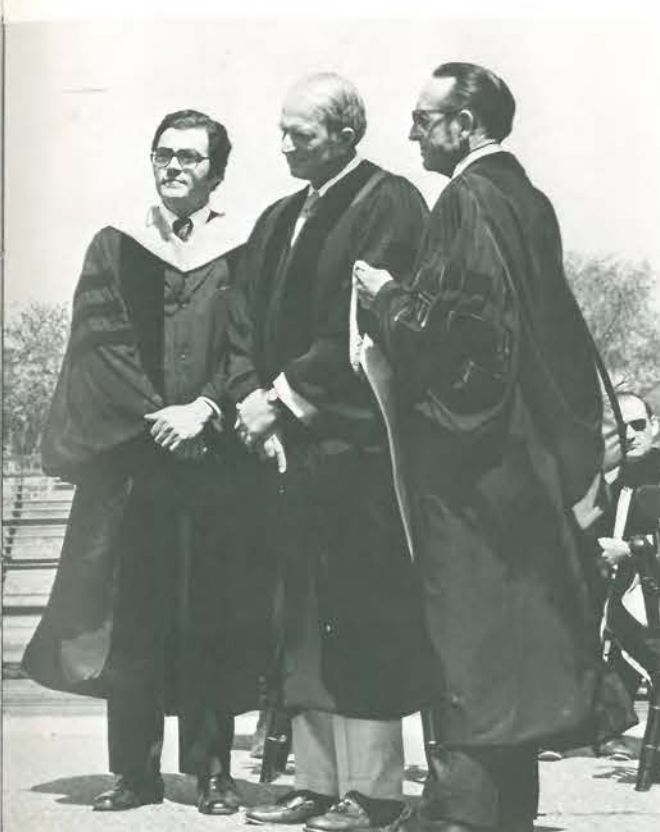
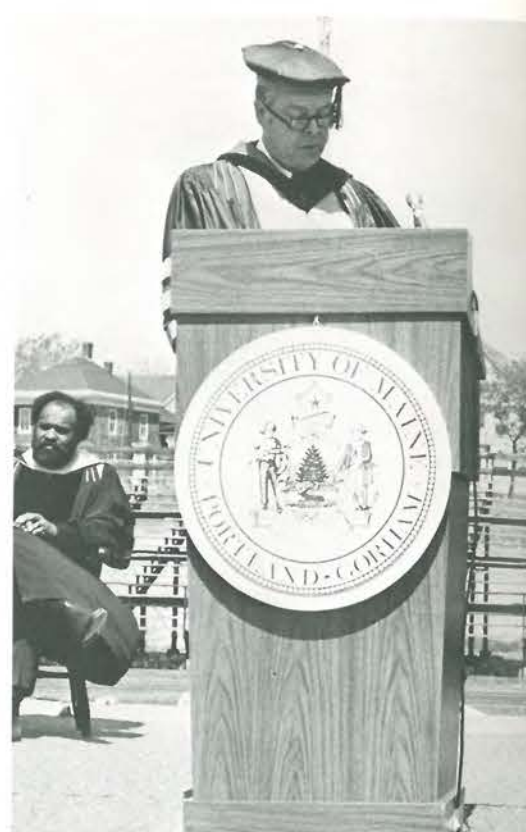


Shirley Sodergren; B.S. — Nursing,  
Inter-Varsity Christian Fellowship, Council of  
Nursing Students.  
Patricia Strout; B.A. — Math,  
Outing Club.  
Leo Taillon; B.A. — Psychology,  
Owls & Eagles, Comm. on Fraternal Organizations.  
Michael Thorne; B.A. — Political Science,  
Political Science Majors Association.  
Gretchen Vondell; B.A. — History,  
Owls & Eagles.  
Patricia Wallace; B.A. — History,  
Girls Basketball Team.  
Wally Wasson; B.S. — Business,  
Golf Club.

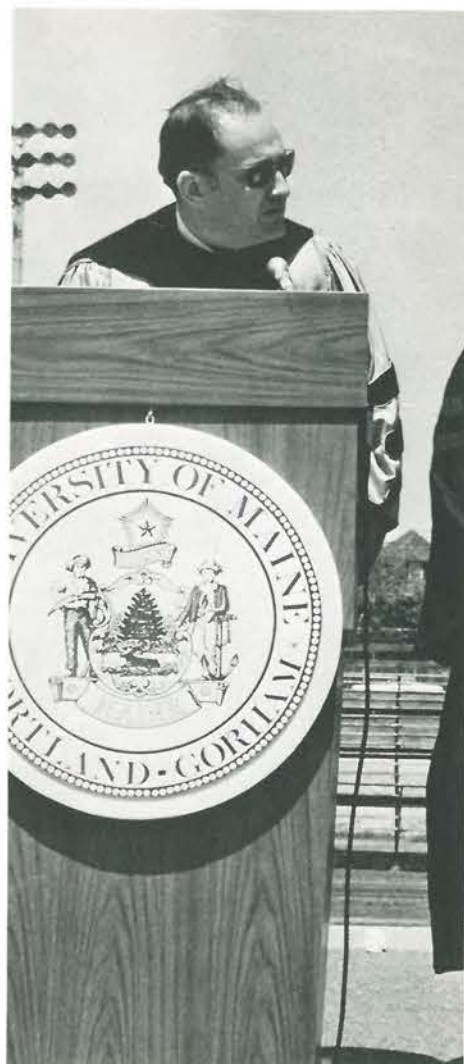


**GRADUATION**  
May 26, 1972













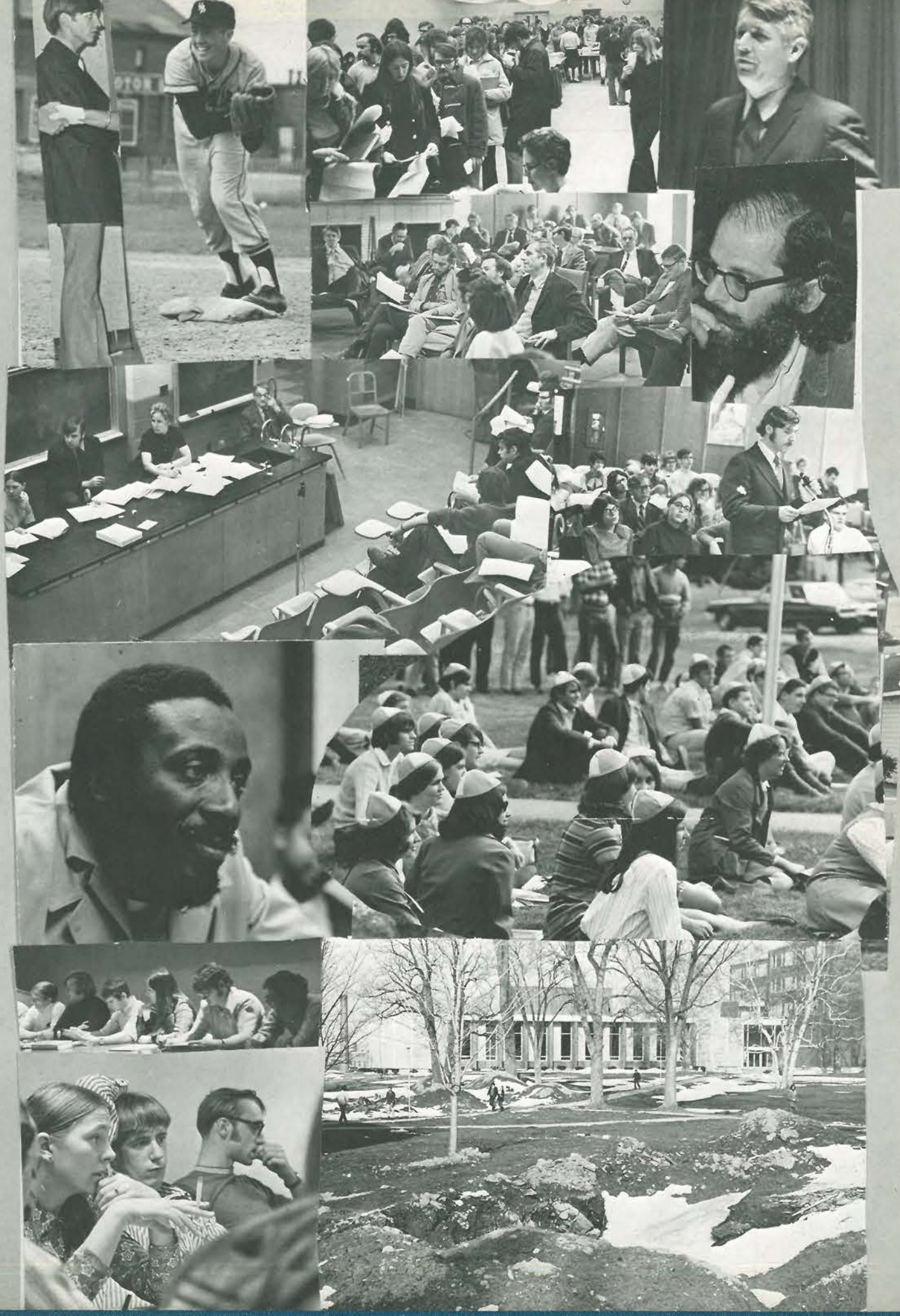




## PINNING CEREMONY







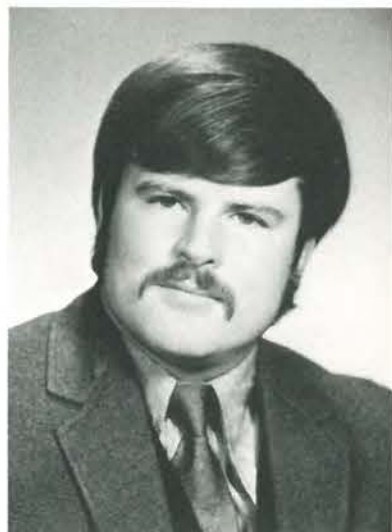




Charles B. Bitler  
Business Administration



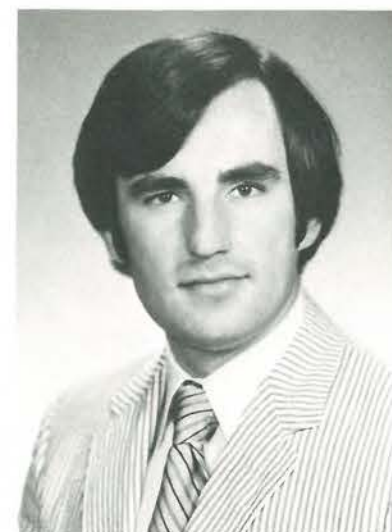
Mary E. Bourgoi  
Business Administration



Barry J. Brown  
Business Administration



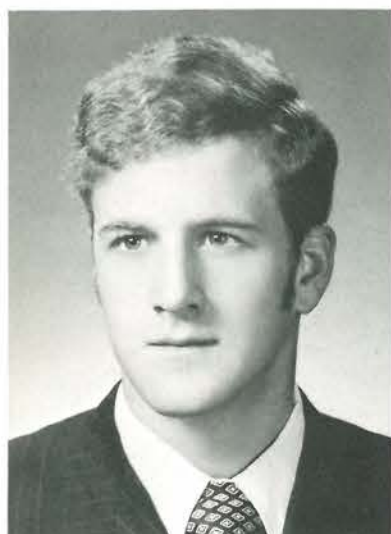
Alan Gibbons  
Business Administration



Jeffrey A. Gray  
Business Administration



Allen C. Hall  
Business Administration



David C. Crowley  
Business Administration



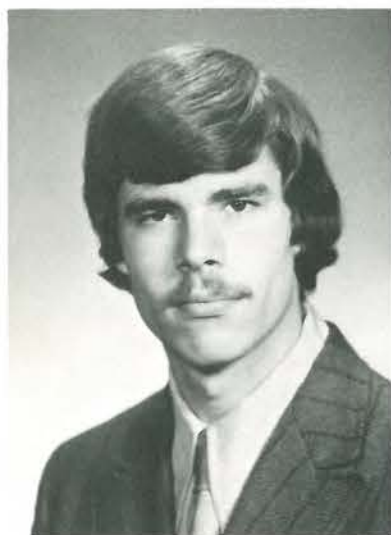
Roland E. Fournier  
Business Administration



Gerald A. Hillock  
Business Administration



Stephen R. Knox  
Business Administration



Stephen D. Geer  
Business Administration  
(AS)

**BUSINESS**

**ADMINISTRATION**



Douglas W. Libby  
Business Administration

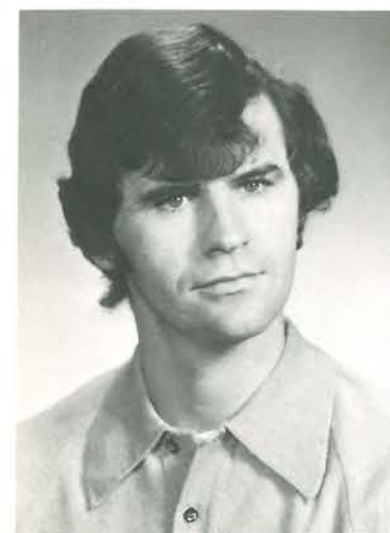




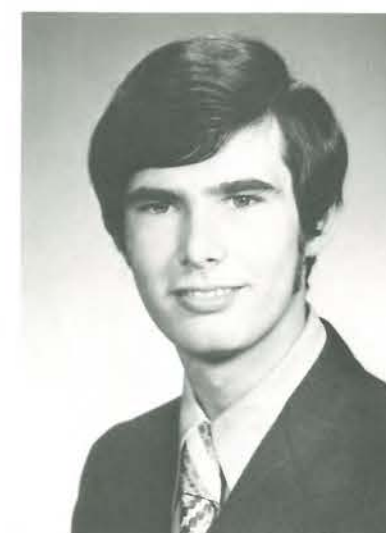
Joel B. Marsden  
Business Administration



James C. Mavel  
Business Administration



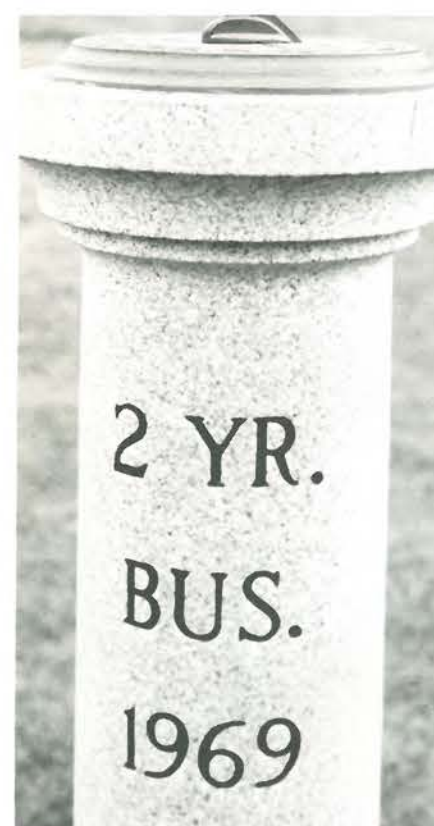
Thomas F. Walsh  
Business Administration



Walter A. Wasson  
Business Administration  
(ASCI)



Charles C. Reynolds  
Business Administration



Charles W. Weaver  
Business Administration



Steven Rankin  
Business Administration



Richard R. Small  
Business Administration



Janice A. Wilcox  
Business Administration



Donald R. Young  
Business Administration





Margery L. Avery  
English

## EDUCATION



Elaine F. Barter  
Elementary Education



Jacqueline M. Beatty  
Elementary Education



Peter H. Bickford  
History



Mary-Ann Bitler  
Social Studies



Susan M. Butler  
Elementary Education



Polly D. Blake  
History



Jo-Ann R. Brown  
Biology



Carol E. Comber  
Art



Stephen J. Bowley  
Education



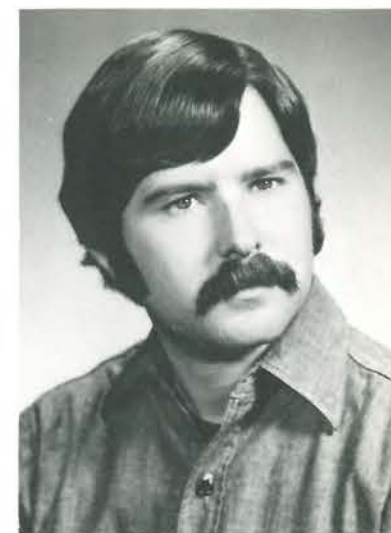




Sharon M. Conley  
Elementary Education



Kevin J. Conroy  
Education



Ronald J. Gobeil  
Art



Daphne Contraros  
Elementary Education



John H. Deetjen  
English



Margaret E. Lee  
Education



Muriel B. Leighton  
Education



Peter Flaherty  
Elementary Education



Carol A. LeTourneau  
Elementary Education





Gerald A. McCann  
Education



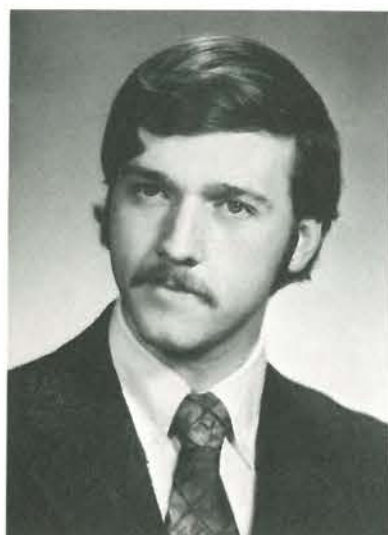
Katherine M. MacWilliams  
Elementary Education



Evelyn D. Potter  
Elementary Education



Suzanne I. Rand  
Elementary Education



Donna L. Miller  
Education



Ann D. Moran  
Elementary Education



Arleen (Cookie) Regan  
Elementary Education



Ford Stevenson  
Biology



Patricia E. Oullette  
Elementary Education



Carleen J. Tarpinian  
Elementary Education





Elizabeth H. Baker  
Nursing



Molly C. Burgess  
Nursing



Wanda S. Clark  
Nursing



Merideth M. Hewett  
Nursing



Audrey J. Ingersoll  
Nursing



Odette Levesque  
Nursing



Natalie M. Coffey  
Nursing



Edna M. Ellis  
Nursing



Nelma A. Mason  
Nursing



Carolyn M. Messa  
Nursing



Brenda M. Sereyko  
Nursing

## NURSING



Ruth L. Frary  
Nursing



Shirley I. Sodergren  
Nursing







Mark Aranson  
Biology



Christopher W. Babbidge  
History



Eddie L. Beard  
Psychology



Susan A. Bean  
Social Welfare

## LIBERAL ARTS



Rita-Mae Bissonnette  
Math



Jane E. Butterworth  
English



Virginia S. Campbell  
English



Dawnela M. Coffin  
English



Stephani M. Faudi  
French

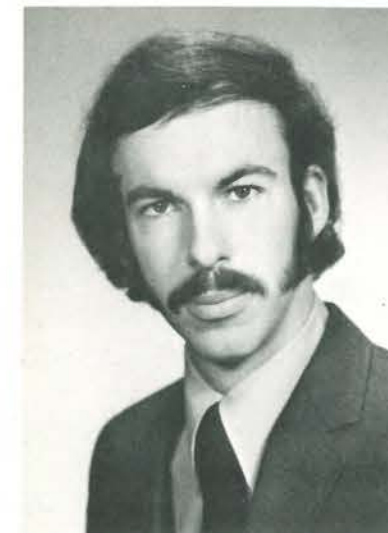




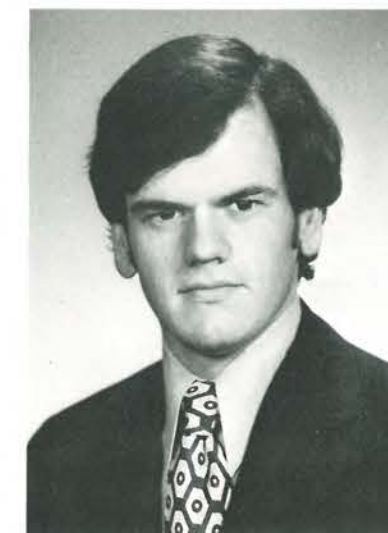
Louise T. Fecteau  
French



Victoria A. Ferguson  
American History



Earl K. Ireland  
Political Science



Edward P. Irish  
History



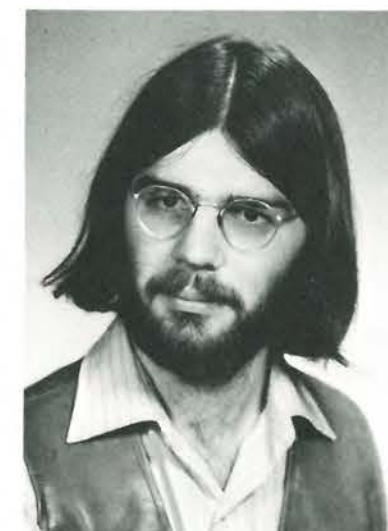
Cecile F. Gagne  
Psychology



Andrea J. Fernald  
Sociology



John S. Kellam  
Political Science



Richard A. Kochis  
Philosophy



Paul R. Laliberte  
Math



William M. Goodrich  
Philosophy



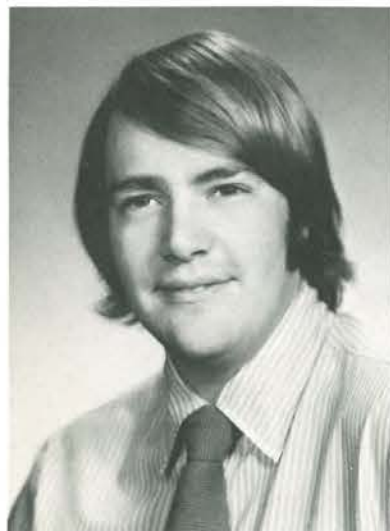
Alexander W. Holt  
Speech-Theater



Paul L. Lavallee Jr.  
Math







Larry N. Leone  
Political Science



Beverly M. Lindquist  
French



Martin W. Murphy  
Political Science



Richard H. Olson  
History



John J. O'Toole  
Economics



Marsha L. Lausier  
History



Thomas Menna  
French



Ronald F. Messer  
Political Science



Raymond C. Paul Jr.  
History



Bernard D. Moreau  
Math



Anita M. Pelletier  
French



Margaret E. Quincannon  
Sociology

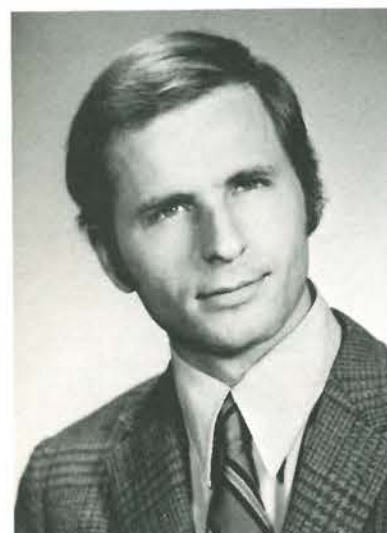


Kathy Regan  
Sociology





Doris Y. Rocray  
French



Charles S. Rollins  
Psychology



Ursula L. Slavick  
French



Louise D. Rousselle  
Math



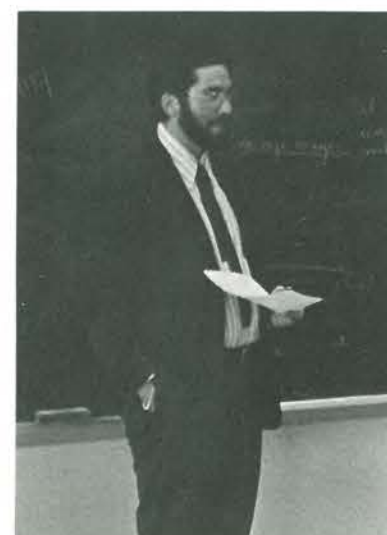
Patricia Strout  
Math



Sylvester B. Usoroh  
Biology



Michael J. Thorne  
Political Science



Leo P. Taillon  
Psychology



Gretchen A. Vondell  
History



Patricia F. Wallace  
History



## Canteen Company Of Maine

650 Main Street  
Portland, Maine

Goodall

Tree Experts Company,  
Inc.

25 Gray Road  
Portland, Maine

### BRIGHTON AVENUE PHARMACY

183 Brighton Avenue  
Portland, Maine

Prescriptions — Beauty Aids  
Cards and Sundries

### WILLIAM GOODMAN AND SONS, INC.

187 Marginal Way, Portland, Maine  
Graders and packers of waste paper  
Magazines — Newspapers  
Corrugated Boxes — Rags  
We sell clean wiping cloths.

WELL DONE AND GOOD LUCK!



**STEVENS STUDIOS**

A Complete Photographic Service



John C. Paige, Company  
Insurance

One Monument Square  
Portland, Maine

Naturally, if it comes from

*Springer's*  
JEWELERS SILVERSMITHS



It's the finest!

580 CONGRESS ST., PORTLAND  
BRANCH STORE IN PORTSMOUTH, N. H.

**The Men's Shop, Inc.**  
*Apparel for Men Women and Boys*

874 Main Street

Westbrook, Maine

Serving Northern New England



Portland — Augusta  
Bangor — Searsport — Burlington  
Fair Haven — Bennington

SELTZER & RYDHOLM DISTRIBUTORS,  
INC.

Bottlers of Pepsi Cola,  
7 Up, & Doctor Pepper  
Canco Road, Portland, Maine

WHEREVER in the WORLD  
YOU GO — GO WEBBER

**webber**  
TRAVEL SERVICE

465 Congress Street/Portland, Maine 04111

make the scene  
with us . . .

*Benoit's*

Prep Hall & Jr. Hall

Fashions For Young  
Men and Ladies

Portland — Lewiston — Brunswick

Maine Mall, So. Portland

NATIONAL  
**Canal Bank**

MEMBER FDIC

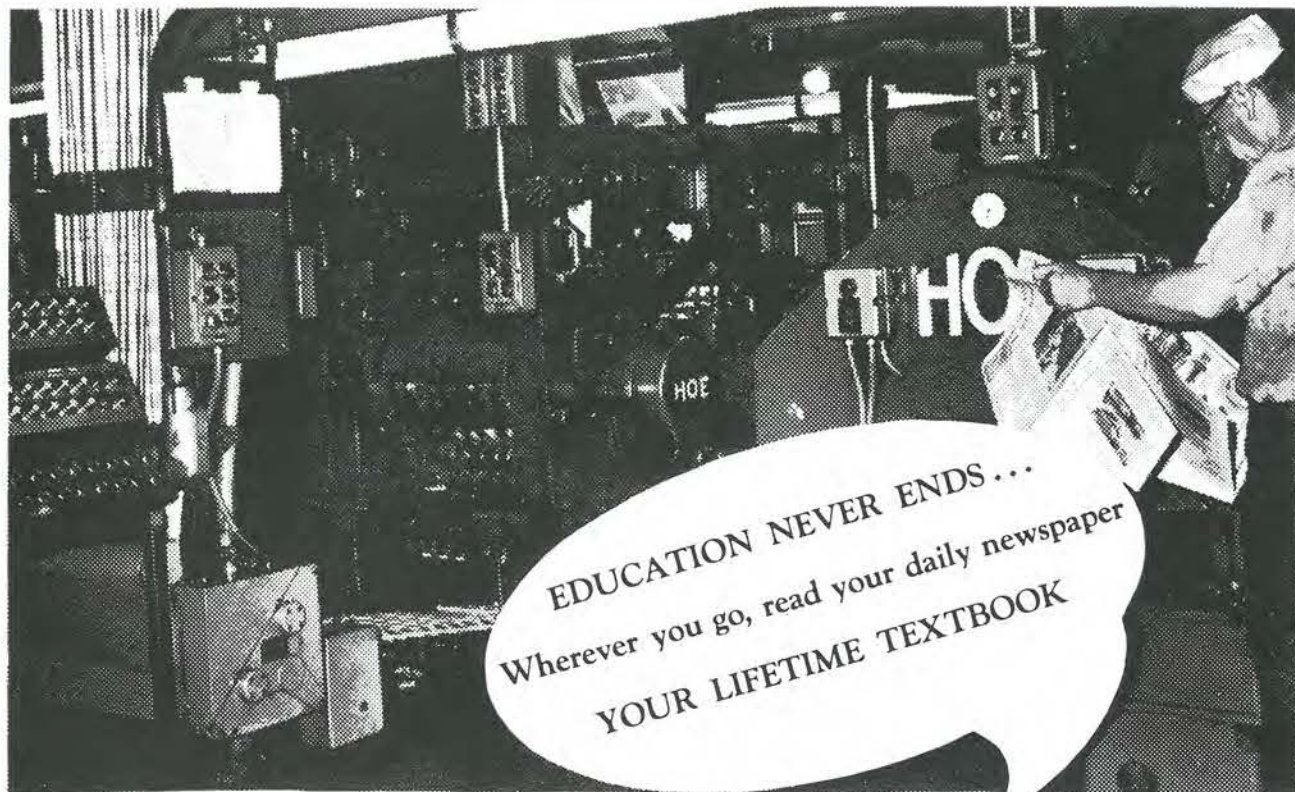
Drop in...make yourself comfortable.

Enjoy

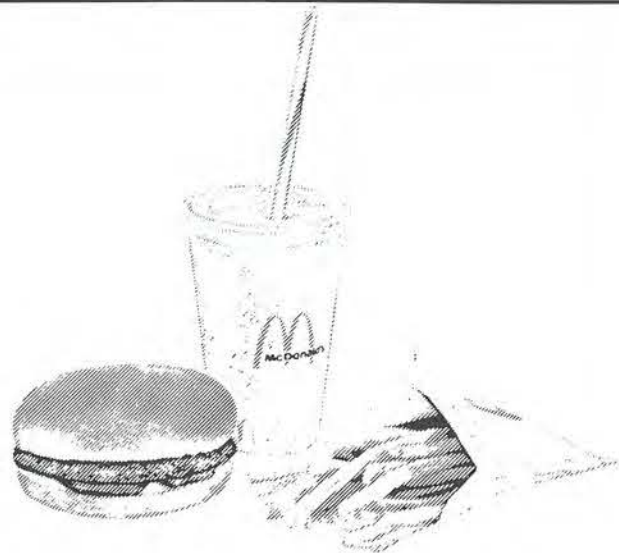
*Coca-Cola*

Trade-mark ®





Portland Press Herald • EVENING EXPRESS • Maine Sunday Telegram



♪ You deserve a break today...  
♪ so get up and get away to



645 Congress St. Portland

Best Wishes to The  
Class of 1972  
UMPIRE PRODUCTIONS

*Chester L. Jordan & Co. INC.*



22 MONUMENT SQUARE, PORTLAND, MAINE 04111



HARMON'S FLOWERS  
GIFT'S — ANTIQUES

## FREE Student Checking

Casco offers high school and college students a chance to have a free checking account — no minimum balance to worry about and no service charge. Make all the deposits you want and write all the checks you want. The only thing we ask is that your parents or guardian also have a checking account at Casco. Come in and sign up at any Casco office.



**Casco Bank & Trust**  
We're always thinking...

Member FDIC

YOU'LL ENJOY SHOPPING AT  
*Porteous*



Compliments of



### OAKHURST DAIRY

"For Quality You Can Depend On"

364 Forest Avenue  
Portland, Maine

## Warren's Standard Papers

made in Maine by

S.D. WARREN COMPANY

A DIVISION OF SCOTT PAPER CO.

WESTBROOK, MAINE

AGENTS:

C.M. Rice Paper Co.  
C.H. Robinson Co.  
Portland, Maine



## The Bard

371 Forest Ave.  
Portland, Me.

Good Food! Good Drink!  
Good Times!

### BURNSWICK TRANSPORTATION COMPANY

Elm & Middle Street

Brunswick



### MAINE'S LARGEST OFFICE PRODUCTS DEALER



PORTLAND, MONUMENT SQUARE 773-3881  
LEWISTON 49 Lisbon St. 784-4555  
AUGUSTA 221 Water St. 623-4061  
BRUNSWICK 150 Main St. 725-7082

## Owen Moore

Downtown Portland  
Mill Creek  
North Gate  
Auburn  
Maine Mall

Fashions for the  
Young at Heart

### DAY'S JEWELRY AND APPLIANCE STORE

Stores In

Maine, New Hampshire, and Vermont

### PORTLAND NEWS COMPANY

270 Western Avenue

"Your school paperback supplier"



Fine quality food and service

for over a century at

# Shaw's

MNB'S Full Circle  
Service makes sense  
to Maine people ...  
makes life easier



MAINE NATIONAL BANK



# CREDITS

David Holbrook, Editor

Nancy Doboga, Assistant Editor

Stephen Geer, Sports Editor

Rick Kochis, Staff Photographer

Steve Rankin, Photographer

Greg Jordan, Sports Photographer

Stevens Studios of Bangor

Phyliss Baker, Senior Photographer

Frank Schmidt, Graduation Photographer

Jean Bisson, Business Manager

Published by: Hunter Publishing Company

Winston-Salem, North Carolina

Linwood Card, Representative

