

2003

Illicit Discharge Detection and Elimination: State/Local Partnerships; Part 1: NEIWPCC's IDDE Manual (2003 NEIWPCC Presentation)

Rebekah Lacey
New England Interstate Water Pollution Control Commission

Follow this and additional works at: <https://digitalcommons.usm.maine.edu/cbep-presentations>

Recommended Citation

Lacey, R. (2003). Illicit Discharge Detection and Elimination: State/Local Partnerships; Part 1: NEIWPCC's IDDE Manual (2003 NEIWPCC Presentation). [Presentation slides]. Portland, ME: University of Southern Maine, Muskie School of Public Service, Casco Bay Estuary Partnership.

This Book is brought to you for free and open access by the Casco Bay Estuary Partnership (CBEP) at USM Digital Commons. It has been accepted for inclusion in Presentations by an authorized administrator of USM Digital Commons. For more information, please contact jessica.c.hovey@maine.edu.

Illicit Discharge Detection and Elimination: State/Local Partnerships

Part 1: NEIWPCC's IDDE Manual

**Rebekah Lacey
NEIWPCC
November 2003**



New England Interstate Water Pollution Control Commission (NEIWPCC)

- 💧 Created in 1947 by an Act of Congress
- 💧 CT, ME, MA, NH, NY, RI, and VT
- 💧 35 Commissioners (5 per State)
- 💧 Headquartered in Lowell, MA
- 💧 Web site at www.neiwpcc.org

EPA Regulation of Stormwater Discharges

💧 Phase I (1990)

- 💧 Large and medium MS4s
- 💧 Industrial activities
- 💧 Large construction sites

💧 Phase II (1999)

- 💧 Small MS4s in urbanized areas
- 💧 Small construction sites
- 💧 End of municipal exemption for industrial activities
- 💧 Revision of “No Exposure” provision

NEIWPCC's Stormwater Workgroup



- 💧 **Meets 3 times a year**
- 💧 **State and EPA staff**
- 💧 **Discusses implementation of EPA's Phase II Stormwater Rule**

Phase II and Small MS4s:

6 Minimum Measures

- 💧 Public education and outreach
- 💧 Public participation/involvement
- 💧 Illicit discharge detection and elimination (IDDE)
- 💧 Construction site runoff control
- 💧 Post-construction runoff control
- 💧 Pollution prevention

Phase II and Small MS4s:

6 Minimum Measures

- 💧 Public education and outreach
- 💧 Public participation/involvement
- 💧 Illicit discharge detection and elimination (IDDE)
- 💧 Construction site runoff control
- 💧 Post-construction runoff control
- 💧 Pollution prevention

Illicit Discharge: Definition

“Any discharge to a municipal separate storm sewer that is not composed entirely of stormwater, except discharges pursuant to an NPDES permit and discharges resulting from fire-fighting activities.”

Examples of Illicit Discharges

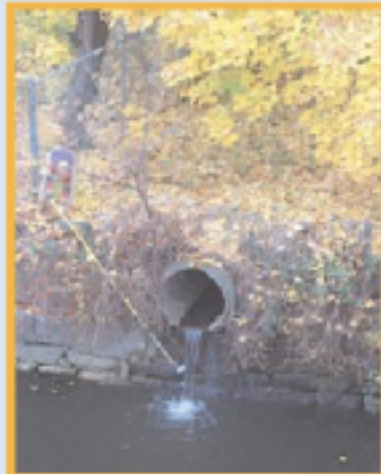
- 💧 Sewage line from a house or business is connected to storm drainage system
- 💧 Cross-connection between sewer line and storm system
- 💧 Improper disposal of auto and household toxics
- 💧 Laundry or car wash discharge flows to storm drain

Requirements for Municipalities' IDDE Programs

- 💧 Storm sewer map
- 💧 Illicit discharge ordinance
- 💧 Development and implementation of a plan to detect and address illicit discharges
- 💧 Public outreach

ILLICIT DISCHARGE DETECTION AND ELIMINATION MANUAL

A Handbook for Municipalities



NEW ENGLAND INTERSTATE WATER POLLUTION CONTROL COMMISSION

January 2003

IDDE Manual Contents

- 1. Getting Started With Your IDDE Program**
- 2. Developing a Storm Sewer Map**
- 3. Prohibiting Illicit Discharges**
- 4-7. Developing and Implementing an IDDE Plan**
 4. Locating Priority Areas
 5. Tracing the Source of an Illicit Discharge
 6. Removing the Source of an Illicit Discharge
 7. Evaluation of the IDDE Program

IDDE Manual Contents (Cont'd)

- 8. Outreach to Employees, Businesses,
and the General Public**
- 9. BMPs and Measurable Goals for IDDE**
- 10. Resources**



The IDDE manual can be downloaded
from the “Publications” page of
www.neiwpcc.org