

3-2004

Albert Brenner Glickman Family Library Guide

USM Library

Follow this and additional works at: <https://digitalcommons.usm.maine.edu/glickmanlibrary>

 Part of the [Library and Information Science Commons](#), and the [United States History Commons](#)

Recommended Citation

USM Library, "Albert Brenner Glickman Family Library Guide" (2004). *Glickman Family Library*. 3.
<https://digitalcommons.usm.maine.edu/glickmanlibrary/3>

This Book is brought to you for free and open access by the USM Libraries at USM Digital Commons. It has been accepted for inclusion in Glickman Family Library by an authorized administrator of USM Digital Commons. For more information, please contact jessica.c.hovey@maine.edu.

3/04

University of Southern Maine
**Albert Brenner
Glickman Family
Library**
Library Guide



UNIVERSITY OF
SOUTHERN MAINE

University of Southern Maine Glickman Family Library

About the Building

The Glickman Family Library is an adaptive reuse of a 1919 seven-story commercial bakery. The building was purchased by the University in 1991, and, following an innovative renovation of the first four floors, the Portland Campus Library was moved from Luther Bonney Hall to this landmark building in 1993. The Portland Campus Library was renamed the Glickman Family Library in October 1997 in recognition of a generous gift toward completion of the building renovation from Albert B. and Judith L. Glickman. The top three floors of the building were completed in April 2004 providing a variety of student focused collaborative spaces, a new home for University Special Collections, and a room for University Special Events, making the Glickman Family Library the center of the Portland campus at USM.

USM Libraries

The Glickman Family Library, located on USM's Portland campus, is the largest of the three USM Libraries. Libraries on the Gorham and the Lewiston-Auburn campuses reflect the majors and programs supported on those campuses. All locations of USM Libraries offer full library services.

Departments

Access Services

- **Circulation** checks out materials, maintains course reserves, and activates USM cards for Library use.
- **Interlibrary Loan** helps patrons obtain materials not available through the UMS online catalog (URSUS) or Maine InfoNet.

Reference provides help on using the Libraries and conducting research. Ask questions in person, by phone, e-mail or via the Web. Reference staff also teach information literacy and research skills to individuals and classes.

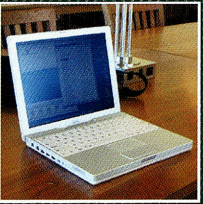
Serials provides access to and assistance with magazines, journals, newspapers, and microforms.

Special Collections consists of rare books and manuscripts, the University Archives, and the Jean Byers Sampson Center for Diversity, which houses unique materials documenting the African-American; Jewish; and Lesbian, Gay, Bisexual, and Transgender (LGBT) communities of Maine. Call 780-4269 for information and hours

Osher Map Library and Smith Center for Cartographic Education, a collection of rare maps, atlases, and globes from 1475 to the present, is housed in the Glickman Family Library. Its reference collection, exhibitions, and educational programs offer unique opportunities to research historical maps. Call 780-4850 for information and hours.

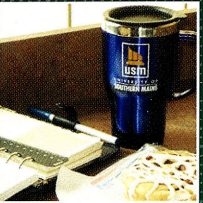
Technology

The Glickman Family Library offers a full range of state-of-the-art information technology resources. Computers for both USM and public use are available throughout the building. The Reference Area on the second floor features student computers, many with full productivity software. The Student Collaborative Computer Room is a versatile collaborative workspace with computers, scanning and printing facilities, and a laptop bar. The Center for Information Literacy is an e-classroom with 36 computers and a digital projection system. All USM Libraries will have full wireless capability by September 2004.



Be Comfortable

The UnumProvident Great Reading Room, on the seventh floor, is a quiet, relaxed reading and study area with spectacular views of Back Cove, furnished with handsome Thos. Moser furniture, attractive lighting, and comfortable seating.



The AAA Northern New England Café, on the fifth floor, with self-service vending machines, is a bright, cheery, and informal place to meet friends for coffee and snacks.

The newly expanded Library includes new group study rooms, large tables to use for collaborative projects, individual study carrels, and comfortable lounge areas on the fifth and sixth floors.

Getting Help—Just Ask!

We are here to help you with your research, guide you through the vast array of resources, and answer your questions. Use any or all of these options:



Reference Service: Reference staff are ready to provide assistance in using basic through advanced Library resources.

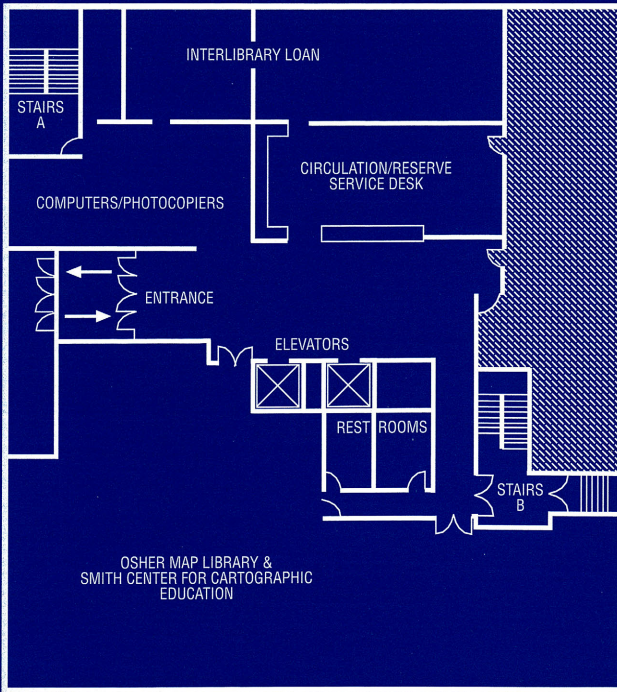
Virtual Reference: Choose "Ask-A-Librarian" on the USM Libraries' Web page for e-mail and live chat reference.

USM Libraries' Web page: <http://library.usm.maine.edu> or from the pulldown menu on the USM home page at www.usm.maine.edu. The site provides links to electronic resources, databases, journals, the URSUS catalog, library research guides, and other helpful "how-tos."

One-On-One Assistance: Make an individual appointment with a reference librarian to assist you with course-related or in depth research.

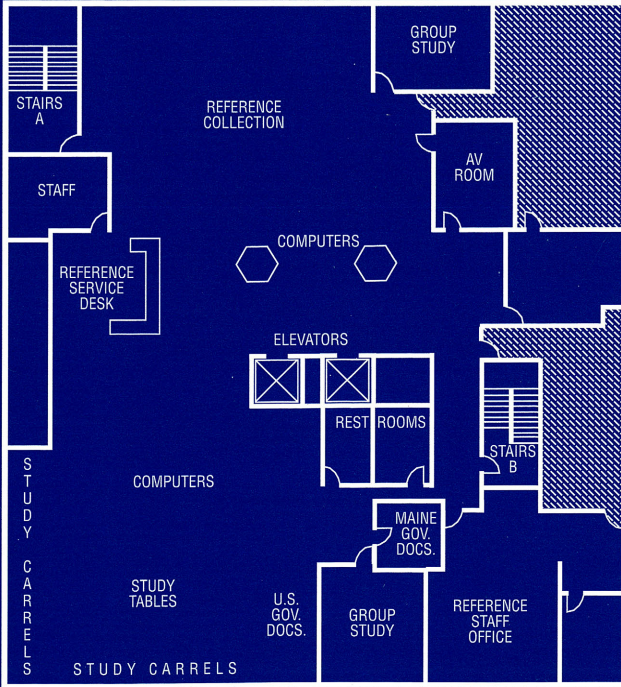
First Floor

Circulation/Reserves
Interlibrary Loan
Osher Map Library and Smith Center for
Cartographic Education
Computers/Photocopiers



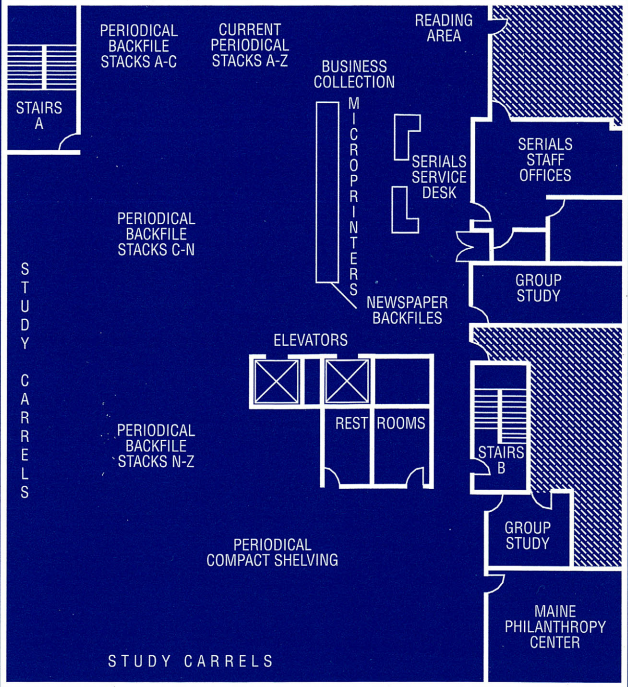
Second Floor

Reference Services
Government Documents
Group Study Rooms
Acquisitions
Computers



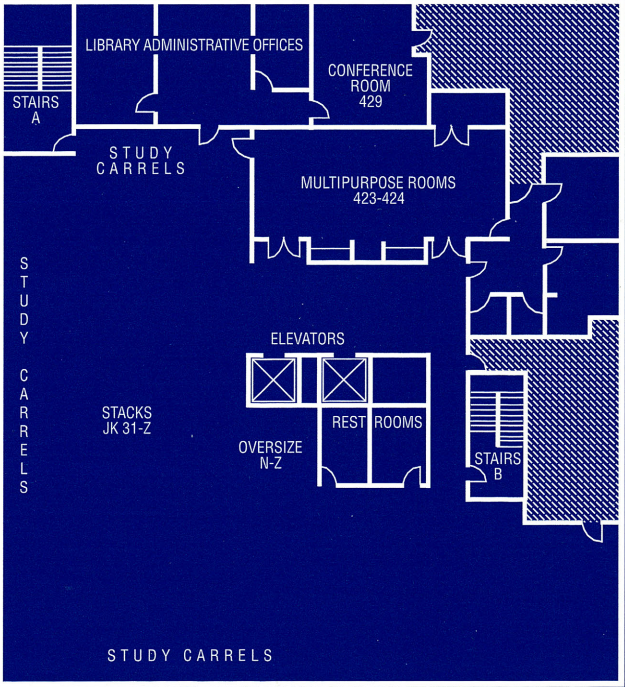
Third Floor

Serials
Periodicals/Newspapers
Maine Philanthropy Center
Group Study Rooms
Computers/Photocopiers/Microprinters



Fourth Floor

Library Administrative Offices
423-424 Multipurpose Rooms
Book Stacks
Computers



Library Hours at Portland/Gorham

Monday-Thursday 7:45 a.m.-11 p.m.
Friday 7:45 a.m.-6 p.m.
Saturday 10 a.m.-6 p.m.
Sunday 10 a.m.-10 p.m.
Vacation, summer, and holiday hours are posted at appropriate times.

Call the Lewiston-Auburn College Library for hours at 753-6540.



Library Glossary

Boolean Searching: Combining search terms in different ways using the connector words AND, OR, or NOT. Used extensively with all online resources.
Course Reserves: Books, articles, or other materials in print and electronic formats to be used for class preparation that are selected by faculty and made available at the Library.
Mariner: Gateway to University of Maine System Libraries' electronic information resources. Includes links to online indexes, URSUS, and other quality Web-based materials.
Periodical Indexes: Available in print or online versions; tools used to search for magazines, scholarly journals, and newspaper articles on a particular topic.
Serials/Periodicals: Anything published periodically, including magazines, scholarly journals, and newspapers. Select titles are available online.
Subject Heading: A word or phrase used consistently by a print or online resource to describe a person, place, event, or topic. Also sometimes called a "descriptor."
URSUS: Catalog of items owned by USM, UM System Libraries, and other selected Maine libraries. Primarily lists book, periodical, and newspaper titles and government publications, but also includes other items such as music scores and recordings, and maps. Does not include articles within periodicals. Often referred to as the "online catalog." The URSUS requestor function allows users to request materials from participating libraries through the catalog and to have them sent to their home campus library.

Contact Information

Glickman Family Library (on the Portland Campus)
314 Forest Ave.
PO Box 9301
Portland, ME 04104-9301
Circulation 780-4270
Interlibrary Loan 228-8449
Reference 780-4272

Gorham Campus Library (located in Bailey Hall)
37 College Ave.
Gorham, ME 04038
Circulation 780-5345
Interlibrary Loan 780-5343
Reference 780-5344

Lewiston-Auburn College Library
51-55 Westminster Street
Lewiston, ME 04240
Circulation 753-6540
Interlibrary Loan 753-6542
Reference 753-6540

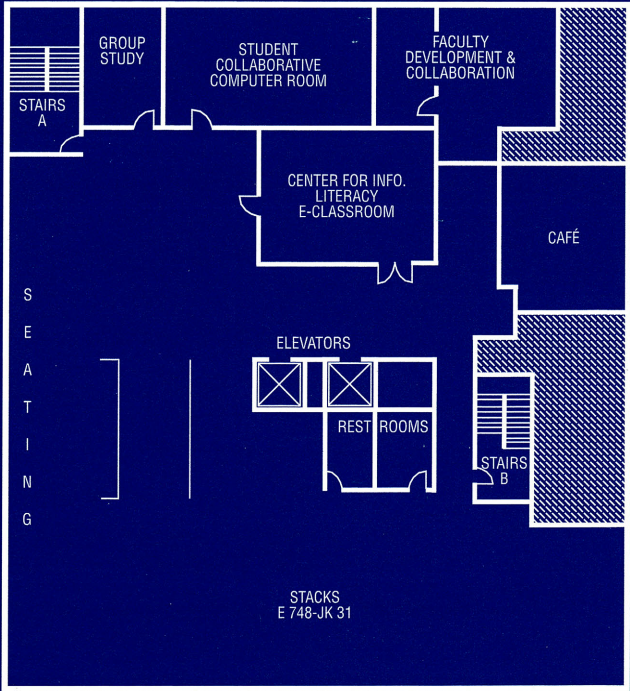
Visit the USM Libraries' Web site at:
<http://library.usm.maine.edu>

University of Southern Maine
Albert Brenner
Glickman Family
Library
Library Guide



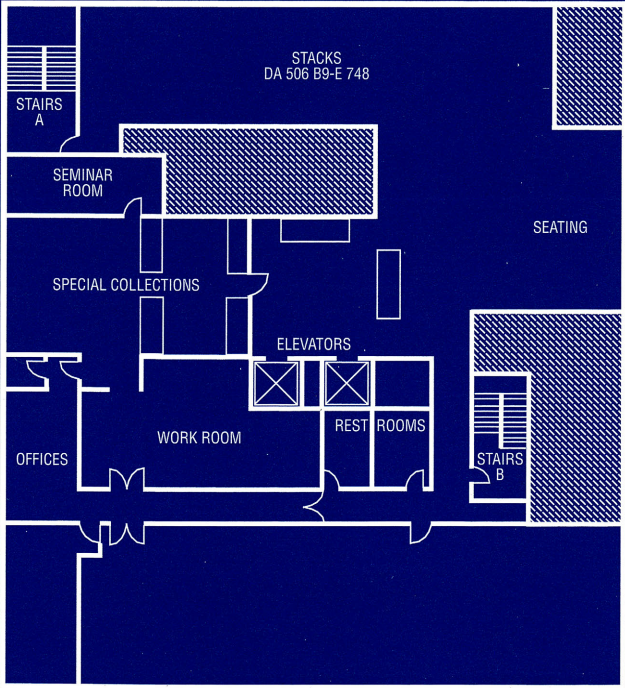
Fifth Floor

AAA Northern New England Café
Student Collaborative Computer Room
Faculty Development and Collaboration Room
Center for Information Literacy
Group Study Room
Computers/Book Stacks



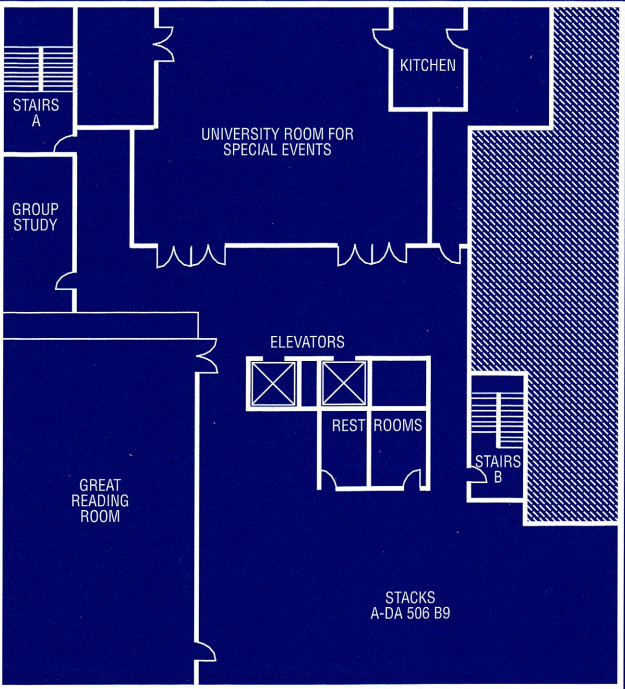
Sixth Floor

Mildred Brenner Glickman Special Collections
Computers
Book Stacks



Seventh Floor—Dorothy Suzi Osher Pavilion

The UnumProvident Great Reading Room
University Room for Special Events
Group Study Room
Book Stacks
Oversize Stacks



Library Hours at Portland/Gorham

Monday-Thursday 7:45 a.m.-11 p.m.

Friday 7:45 a.m.-6 p.m.

Saturday 10 a.m.-6 p.m.

Sunday 10 a.m.-10 p.m.

Vacation, summer, and holiday hours are posted at appropriate times.

Call the Lewiston-Auburn College Library for hours at 753-6540.



Fifth Floor

AAA Northern New England Café

Student Collaborative Computer Room

Faculty Development and Collaboration Room

Center for Information Literacy

Group Study Room

Computers/Book Stacks

