
[Equality News](#)[Periodicals](#)

Fall 2006

Equality News (Autumn 2006)

Matthew R. Dubois

Follow this and additional works at: https://digitalcommons.usm.maine.edu/equality_news

 Part of the [American Politics Commons](#), [American Studies Commons](#), and the [Lesbian, Gay, Bisexual, and Transgender Studies Commons](#)

Recommended Citation

Dubois, Matthew R., "Equality News (Autumn 2006)" (2006). *Equality News*. 9.
https://digitalcommons.usm.maine.edu/equality_news/9

This Book is brought to you for free and open access by the Periodicals at USM Digital Commons. It has been accepted for inclusion in Equality News by an authorized administrator of USM Digital Commons. For more information, please contact jessica.c.hovey@maine.edu.

EQUALITYNEWS

Advocacy for the Lesbian, Gay, Bisexual, and Transgender Communities since 1984

PO Box 1951, Portland, ME 04104 • 207-761-3732 • fax 207-761-3752 • info@equalitymaine.org • www.equalitymaine.org

EQME
EQUALITYMAINE

Autumn 2006

**Campaign
volunteers
needed!**

**Make a difference
now!**

See back page.

In this issue

Elections	1
Strategic Plan.....	2
TABOR.....	3
Hate Crime Rally.....	4
Endorsements	5
Equity Fund	6
Sustaining Partners...	10
Rachel Maddow	14
Volunteers	16

Nov. Elections Pivotal for LGBT Equality

The 2006 gubernatorial and legislative elections are perhaps the most important for LGBT equality in recent years. Governor John Baldacci, sponsor of Maine's non-discrimination law, is in a close race against ultra-conservative Republican Chandler Woodcock, Green Party candidate Pat LaMarche, and Democrat-turned-Independent Barbara Merrill. Control of the House and Senate is also up for grabs. A shift of just one or two seats could threaten the pro-equality majority we've worked so hard to build over the last few legislative sessions.

In the governor's race, the differences between incumbent John Baldacci and his main challenger Chandler Woodcock could not be more clear. Governor Baldacci signed into law both pro-equality bills that EqualityMaine worked on during his first term—a domestic partner bill in 2004 and the non-discrimination bill in 2005. He is the only Maine governor to sponsor a non-discrimination bill for LGBT people, and he worked tirelessly during the NO on 1 campaign last year to ensure it was upheld at the polls.

In stark contrast, Senator Woodcock has cast his vote against LGBT equality at every opportunity he's had—he opposed the domestic partner and non-discrimination bills, and supported a constitutional amendment on marriage and a sea of various negative amendments. If Senator Woodcock became governor, he would undoubtedly continue to oppose LGBT equality.

Pro-equality voters have a clear choice for governor on November 7.

(Continued on page 8)



Governor John Baldacci has been a strong leader on LGBT issues, signing into law a domestic partner benefits bill and being the only governor in Maine history to introduce a non-discrimination bill for LGBT people. Maine has never had leadership of this type in the governor's mansion and we would be well served to continue on this track.

EqualityMaine

EqualityMaine works to secure full equality for lesbian, gay, bisexual, and transgender people in Maine through political action, education, and collaboration.

Board of Directors

Matthew R. Dubois, Esq.
President

Barb Wood
Vice-President

Shannon Banks
Secretary

Fay Brodell, CPA
Treasurer

Cecelia Burnett

Dottie Melanson

Rodney Mondor

Ellis Woodward

Victoria Zavasnik

Staff

Betsy Smith
Executive Director

Darlene Huntress
Program Director

Erica Quin-Easter
Development Director

Thomas Sumner
Bookkeeper

Newsletter Layout by
Kathy Helming

1 Pleasant St., 2nd Floor
PO Box 1951
Portland, ME 04104
207-761-3732
207-761-3752 fax
info@equalitymaine.org
www.equalitymaine.org

EqualityMaine Board Adopts Strategic Plan

At its April 2006 meeting, EqualityMaine Board of Directors adopted a strategic plan to guide the organization toward its vision of full equality for LGBT people in Maine. The plan identifies and proposes strategies in six areas that are essential to achieving the organization's vision—clarity of purpose, efficient and effective operations, robust boards of directors, strong financial health, political power, and effective educational efforts.

EqualityMaine will maintain a clear focus and set of priorities regarding the myriad of LGBT and progressive issues which could demand the attention of the organization and will allocate resources accordingly. To accomplish this, the board adopted a tier system for prioritizing issues and allocating resources in order of their importance to achieving the mission of the organization.

Tier I represents "mission-critical" issues that are directly related to EqualityMaine's mission and for which EqualityMaine is the primary advocate in developing and executing a strategy, work plan, and timeline. For these issues EqualityMaine will allocate a significant amount of resources, most likely including the assignment of at least one full-time staff member. Current Tier 1 issues include marriage equality and building LGBT political power.

Tier II represents "mission-supporting" issues that are top priorities for our coalition partners and allies. EqualityMaine will play a supportive role and will put a modest amount of resources into Tier II issues, seeking volunteers to represent the organization in a coalition. Issues include, but are not limited to, civil liberties, reproductive rights, race issues, safe schools, progressive economic and social issues, and HIV/AIDS issues.

Tier III represents "mission-related" issues that are important to EqualityMaine's members but not central to the organization's mission. EqualityMaine will lend its name in support of these issues as appropriate. Issues include LGBTs in the military, LGBT youth and elders, LGBT business and health care, and LGBT community events.

The EqualityMaine Board of Directors is enthusiastic about the adoption of this strategic plan and is committed to working towards the day when lesbian, gay, bisexual, and transgender persons and their families have full equality in the hearts and minds of Maine people and in all areas of the law. Feel free to read the entire strategic plan on our website at www.equalitymaine.org. Click on About Us, then Strategic Plan. •

EqualityMaine Relocates to New Office Space



After many years in a single office, EqualityMaine finally moved into larger office space, providing more room for our many volunteers and staff. We moved two floors down in the Cinamon Building in Portland and now have enough office space to accommodate our 3 (soon to be 4) staff members, our 4 part-time campaign staff, and our year-long social work intern. On August 2, we hosted an Open House in our new office. Here, EqualityMaine board member Cele Burnett and long-time volunteer Terry Morrison discuss the upcoming legislative elections.

TABOR is Bad for Maine

The EqualityMaine Board of Directors voted in April to oppose TABOR, the so-called Taxpayer Bill of Rights, which will appear on the ballot on November 7. Here's what TABOR is and why we oppose it:

What is TABOR?

TABOR imposes a one-size-fits-all formula for state and local budgets. It would slowly and steadily cut funding for programs like health care, education and services for the elderly.

How does it work?

TABOR limits annual changes in state and local budgets to an arbitrary formula (based on change in population, Consumer Price Index, inflation, change in assessed property value, and enrollment in local schools). TABOR also sets in place a cumbersome and expensive process for raising taxes and fees, or exceeding spending limits. The process requires a 2/3 vote of the "legislative body"—which in many communities is a town meeting—followed by a majority vote of the people in a referendum.

What's wrong with TABOR?

TABOR has many problems. TABOR's growth factors do not allow state and local spending to keep up with the rising cost of services. Under TABOR, many communities will face cuts in important programs like education, health care, and emergency services, in order to stay within TABOR's limits. TABOR also creates great inefficiencies in government through referenda requirements when making simple budgetary decisions. It puts decision-making power into the

hands of a small minority and takes away local control by the majority.

Has TABOR been tried elsewhere and how did it work?

A similar version of TABOR was passed in Colorado in 1992. In subsequent years, Colorado faced serious problems because there was not enough money to run state operations effectively. Roads needed substantial repairs, schools deteriorated, the University of Colorado considered becoming a private institution, and business leaders saw the economy hurt by the lack of money for development and infrastructure. In 2005, Colorado taxpayers voted to suspend the major elements of TABOR in an effort to fix these problems.

What would TABOR do to Maine's schools?

Because spending changes are determined by enrollment, the growth factor for towns losing student population (as happens in many small and rural communities) would be negative, requiring a budget cut in order to conform to TABOR's requirements. By the

(Continued on page 9)

Show Your Colors

Advertise in the EqualityMaine newsletter and reach more than 1,400 supporters across the state. Your business matters to our members—support equality and show your commitment to our community!

\$250 Full page (vertical) 7.5 w x 10 h
\$150 Half page (horizontal). 7.5 w x 4.75 h
\$150 Half page (vertical) 3.5 w x 10 h
\$ 85 Quarter page (vertical). 3.5 w x 4.75 h
\$ 40 Business card (horizontal). 3.5 w x 2.125 h

Advertise annually (4 issues per year) and receive a 20% discount (full payment required with first publication).

For more information or to reserve a space in the next newsletter, contact Erica Quin-Easter at (207) 761-3732 or quineast@equalitymaine.org.

...Put Your Ad Here!

Norma Kraus-Eule, MSW, LCSW

Individual • group • relationship therapy

Working with the LGBT community for 25 years
Now practicing in Portland, Maine

45 Exchange St. 207-650-1804
Suite 300E norma2446@mac.com
Portland, Maine 04101 licensed clinical social worker

Hate Crime Rally Draws Hundreds of Supporters



On June 29, Keri Fuchs (L in photo) and Linda Boutaugh (R in photo) were the victims of a horrific hate crime in their home town of Poland, Maine. Keri and Linda were in East Millinocket, preparing for their move to that area, when they were informed that their mobile home had been trashed and their car had been destroyed.

The crime was not well publicized and came to EqualityMaine's attention nearly two weeks after it had happened. Horrified at the severity of the crime, we immediately put a notice out to our members and supporters on email, encouraging them to see the crime scene for themselves by going to a website created by Linda's son Matthew Leavitt.

EqualityMaine organized a rally in Portland on July 22 in support of Linda and Keri, calling for an end to all hate crimes against LGBT people. Over 250 people attended, including Governor John Baldacci, Attorney General Steve Rowe, and Congressman Tom Allen, all of whom spoke passionately about the need to have Maine be a state free of hate violence against LGBT people.

Also speaking were Stephen Wessler, director of the Center for the Prevention of Hate Violence, Hiram Sibley & Katarina Arvedson, a non-gay couple from Poland who were distraught over this crime in their back yard, and Rev. Jodi Hayashida from the Auburn Unitarian Universalist Church.

EqualityMaine asked people to take action by donating to its Hate Crimes Victims' Fund and we raised over \$6,000 for Linda and Keri, which helped tremendously toward damages to their home and to their spirits.

Many thanks go to the people who turned their anger into action by donating to the Fund and to the organizations who co-sponsored the rally. Huge thanks also to Matthew Leavitt, who painstakingly created the website about the abuse to his mother's and her partner's home. Without Matt's website, our call to action would not have been nearly as effective. •



Legislative and Congressional Endorsements for 2006

Each year, EqualityMaine undergoes a lengthy endorsement process to gauge candidate support for LGBT issues. Every legislative and congressional candidate is sent a questionnaire on issues important to the LGBT community. This year we asked how they would vote on domestic partner benefits, adoption and foster care, marriage, anti-gay violence and harassment, and HIV/AIDS.

Endorsements are based on voting record (if applicable), demonstrated leadership on LGBT issues, and answers to the questionnaire. This year we're endorsing 25 candidates for state senate and 75 for state representative.

In addition, EqualityMaine has endorsed Governor John Baldacci in his re-election campaign for governor, and Congressman Thomas Allen (District 1) and Congressman Michael Michaud (District 2) for U.S. Congress. We made no endorsement in the race for U.S. Senate.

D=Democrat R=Republican G=Green
Bold=Incumbent

- 32 D Joseph Perry, Bangor
- 33 D Mary Poulin, Hampden
- 34 D J. Chipman Beckwith, Fort Fairfield

State Representative

District

- 4 D Charles Bernard, Caribou
- 5 D **Jeremy Fischer, Presque Isle**
- 15 D **Jacqueline Norton, Bangor**
- 16 D **Patricia Blanchette, Bangor**
- 17 D **Sean Faircloth, Bangor**
- 18 D **Michael Dunn, Bangor**
- 19 D **Emily Cain, Orono**
- 20 D Benjamin Pratt, Eddington
- 21 D **Charles Fisher, Brewer**
- 27 D Julius Erdo, Willimantic
- 35 D **Theodore Koffman, Bar Harbor**
- 36 D **Hannah Pingree, North Haven**
- 37 D **James Schatz, Blue Hill**
- 39 D David Higgins, Hampden
- 45 D **John Piotti, Unity**

(Continued on page 7)

State Senate

District

- 1 D Peter Bowman, Kittery
- 4 D **Nancy Sullivan, Biddeford**
- 5 D **Barry Hobbins, Saco**
- 6 D **Phil Bartlett, Gorham**
- 7 D **Lynn Bromley, South Portland**
- 8 D **Ethan Strimling, Portland**
- 9 D **Joseph C. Brannigan, Portland**
- 10 D **Beth Edmonds, Freeport**
- 11 R **Karl Turner, Cumberland**
- 12 D **William Diamond, Windham**
- 15 D Edward Desgrosseilliers, Auburn
- 16 D **Margaret Rotundo, Lewiston**
- 17 D **John Nutting, Leeds**
- 19 D **Arthur Mayo, Bath**
- 21 D Brian Rines, Gardiner
- 22 D Scott Barrows, Rockland
- 23 D Gail Chase, Unity
- 24 D **Elizabeth Mitchell, Vassalboro**
- 26 D Paul Hatch, Skowhegan
- 27 D Sharon Libby Jones, Greenville
- 29 D Thomas Finlay, East Machias
- 30 D **Elizabeth Schneider, Orono**

THE TRANSGENDER FUND

A 501(c)3 Corporation Proudly Serving
Our GLBT Community Since 2000

"Please don't send our activists into that tough battle all alone.
Please lend your financial support
for a stronger GLBT Community.

*Make a Difference
by making a Donation*,
and by making it Today!
Thank you so very much!"*

Diane Dale, Chair, The TG Fund

PO BOX 50, FREEPORT, ME 04032
Phone/Fax: (207) 846-7997
Email: diane@tgfund.org

Website: WWW.TGFUND.ORG

*Checks/Money Orders may be made payable to the "TG Fund." Credit Cards are accepted. Donations can be made by Mail, Phone, or over the Fund's Website.

Your Voices Heard by the Equity Fund

by Jennifer Southard, Maine Community Foundation

In June 2004, the Equity Fund of the Maine Community Foundation commissioned a statewide survey of members and friends of the LGBT community in Maine. Among the questions asked: What are the issues you and your family face? What are your community needs and priorities? The Equity Fund reached out to LGBT organizations including Outright Portland, EqualityMaine, GLSEN, GLAD, and Dayspring AIDS Support Services to distribute the survey widely (4050 surveys distributed in total). Nearly 500 of you responded to the survey.

Your voice matters in what the Equity Fund supports, and your survey answers helped to shape our funding priorities. The reality of discrimination was a central theme. Around 60% of the LGBT respondents reported that they had experienced discrimination in Maine due to sexual orientation or gender identity. The top three needs cited were civil rights protections, legal recognition of relationships via marriage, and community education to reduce LGBT phobia. There was also a significant concern about the core services, support, and social opportunities available for LGBT people in rural Maine. As two respondents suggested, "Portland is strong. Create momentum elsewhere" and "Get to rural areas if you want to make a difference."

Based on your responses, last year the Equity Fund revised its criteria to focus on two grantmaking strategies: 1) Capacity-building (focus on the internal structure of an organization) grants to strengthen the impact of LGBT organizations; and 2) Project grants to support programs and services in Maine's rural and underserved regions, particularly in the following priority areas:

- Access to health care and reduction of health disparities
- Aging issues and support for LGBT elders
- Education to promote respect and understanding of LGBT people
- Support for LGBT families and individuals
- Reduction of anti-LGBT violence
- Social and cultural community-building activities
- Support for LGBT youth

These priorities translated to funding for four projects in 2005:

- \$4,500 to support **EqualityMaine Foundation's** leadership role in Maine's Partnership to End Discrimination, a coordinated effort among Maine's major progressive organizations to expand education, community leader-

(Continued on page 14)

SUSAN FARNSWORTH ATTORNEY AT LAW

G/L/B/T-friendly General Practice of Law
103 Brunswick Ave., Suite. #1 (Rte. 201)
Gardiner, ME 04345

Tel (207) 582-3330 Cell (207) 626-3312
Fax (207) 582-3332 www.susanfarnsworth.com

Leave a Legacy of Equality

When you make or update your will, consider including EqualityMaine in your planning. We'll carry on your commitment to LGBT equality for years to come.

For more information on making a bequest or other planned gift to EqualityMaine, contact Erica Quin-Easter at (207) 761-3732 or quineast@equalitymaine.org.

If you've included EqualityMaine Foundation in your will, we'd like to know so we can say thanks.



☐ YES! I have included EqualityMaine in my will.

Name _____

Address _____

City, State, ZIP _____

Phone _____

Email _____

Legislative and Congressional Endorsements for 2006

(Continued from page 5)

State Representative (cont'd)

District

46 R Stephen Bowen, Rockport
53 D Peter Rines, Wiscasset
55 D Judd Thompson, China
56 D Kimberly Davis, Augusta
57 D Patsy Crockett, Augusta
58 D Alexis LeGendre, Vassalboro
60 D Jane Scease, Topsham
62 D Thomas Watson, Bath
63 D Charles Priest, Brunswick
64 D Leila Percy, Phippsburg
65 D Carol Grose, Woolwich
66 D Stan Gerzofsky, Brunswick
67 D Seth Berry, Bowdoinham
68 D Sheila Desgrosseilliers, Auburn
69 D Deborah Simpson, Auburn
71 D Elaine Makas, Lewiston
72 D William Walcott, Lewiston
73 D Richard Wagner, Lewiston
74 D Margaret Craven, Lewiston
76 D Marilyn Canavan, Waterville
79 D Sharon Treat, Farmingdale
80 D Nancy Smith, Monmouth
82 R Patrick Flood, Winthrop
83 D Deane Jones, Mount Vernon
89 D Janet Mills, Farmington
92 D John Patrick, Rumford
95 D Roy Gedat, Norway
98 D Sheila Rollins, Harrison
100 D James Bradley, Mechanic Falls

101 D Thomas Bossie, Casco
103 R John Robinson, Raymond
104 D Prudence Grant, Lisbon
105 D Christopher Rheault, New Gloucester
106 D David Webster, Freeport
109 D Anne Graham, North Yarmouth
110 D Mark Bryant, Windham
111 D Geoffrey Heckman, Windham
113 D John Brautigam, Falmouth
114 D Boyd Marley, Portland
115 D Glenn Cummings, Portland
116 D Charles Harlow, Portland
117 D Anne Haskell, Portland
118 G John Eder, Portland
119 D Herbert Adams, Portland
120 D Anne Rand, Portland
121 D Cynthia Dill, Cape Elizabeth
122 D Lawrence Bliss, South Portland
123 D Jane Eberle, South Portland
124 D Bryan Kaenrath, South Portland
125 D Ann Peoples, Westbrook
127 D Shawn Babine, Scarborough
128 D Peggy Pendleton, Scarborough
129 D Christopher Barstow, Gorham
130 D David Farrington, Gorham
140 D Gary Connor, Kennebunk
141 D Christopher Babbidge, Kennebunk
142 D Andrea Boland, Sanford
146 D Adam Scharff, South Berwick
148 D Roberta Beavers, South Berwick



Matt Dubois, president of EqualityMaine's Board of Directors, talks with a voter at the Common Ground Fair about the importance of defeating a constitutional amendment on marriage. EqualityMaine collected over 1200 post-cards signed by Maine voters to distribute to legislators in preparation of the 2007 legislative session.

November Elections Pivotal for LGBT Equality

(Continued from page 1)

In the tightly contested legislative races, which have the capacity to tip the balance of power in the State House this year, it is essential that pro-equality candidates win a majority of the races. We've had several important victories in the last three legislative sessions which would not have been possible without pro-equality legislators. For example, legislators passed bills providing domestic partners with health care, inheritance rights, next-of-kin status for disposition of remains, and elimination of tax on property transfers. They also passed the non-discrimination law and defeated a constitutional amendment on marriage. We will need a majority of pro-equality legislators to secure additional domestic partner protections in the upcoming legislature session.

Although these victories may have seemed easy to achieve, they were not. During our effort to pass domestic partner inheritance rights, there were many motions where a shift of just a few votes would have killed the bill. In one particular motion in the House, a razor thin margin of 70-68 allowed the bill to advance. During two other motions, only one vote made the difference between winning and losing.

We need pro-equality legislators to defeat bad legislation too. We have twice defeated a constitutional amendment on marriage and last year defeated a myriad of negative amendments to the non-discrimination bill. These defeats would not have been possible with-

out pro-equality legislators working hard on our behalf.

It is certain that we will face another constitutional amendment on marriage in 2007. It is also rumored that our perennial opposition (the Christian Civic League) may seek to change the process by which constitutional amendments are brought forth. Currently, a proposed constitutional amendment must be introduced in the House and Senate and passed by a 2/3 majority. It would then go to voters as a referendum question, where a simple majority is needed. A proposed constitutional amendment may not, under current law, go directly to referendum through means of collecting signatures—as is the case with a people's veto.

There appears to be an effort underway to change the law so that proposed constitutional amendments follow the same or similar procedures as citizen initiatives—collect voter signatures, and if the appropriate number of valid signatures are collected, the Legislature must either pass the bill in its entirety or refer it to the voters (as a referendum).

Their motivation is, of course, that a constitutional amendment on marriage has a good chance of passing if voters vote on it soon. Since the legislature has not passed the constitutional amendment twice now, opponents of equality are looking for a way around the legislature as soon as possible. Once voters are educated on an issue, as we proved last year with the non-

(Continued on page 13)

Cele Burnett (L) and Ann Swanson (R) host a house party for EqualityMaine titled "Wedding Bell Blues." Because Cele and Ann (and all LGBT Maine couples) cannot get married, they brought attention of this discrimination by hosting a house party for their friends and neighbors. EqualityMaine members and supporters across the state are hosting house parties this fall to educate Mainers on the need for marriage equality.



TABOR is Bad for Maine

(Continued from page 3)

calculations of the Maine Municipal Association, more than 31 percent of Maine schools would be forced to cut their budgets (or go through the cumbersome override process).

What would TABOR do to local government?

Spending for counties, towns, and cities will be controlled by changes in assessed property value or changes in inflation and population. A mill closing or decrease in population can easily result in budget cuts. Maine Municipal Association's analysis finds that 172 municipalities would have a negative spending limitation leading to budget cuts.

What would TABOR do to state government?

TABOR would allow small nominal increases in

state spending from year to year. But because those increases would be based on changes in inflation and population, spending would not be able to keep up with the rising cost of services. This would mean cuts to K-12 education, higher education, health care, transportation, and conservation, to name a few. TABOR would also limit the legislature's ability to respond to emergencies like an ice storm or to investment opportunities. •

For more information go to www.NOTABOR.org.

Thanks to
Citizens United to Protect Our Public Safety,
Schools, and Communities
for providing facts and information for this article.

**WELLS
FARGO**

**HOME
MORTGAGE**

Realize Your Dream. Help Your Neighbors. Enrich Your Community.



Achieve your homeownership goal, and help make a positive difference — right in your own backyard! Our Sharing Advantage® program enables you to support a worthy local cause. When you close a purchase or refinance loan with Wells Fargo Home Mortgage, we'll make a \$300 contribution to the faith-based or non-profit organization of your choice.¹ Designate a recipient that serves your community, and extend the benefits of your customer relationship to your neighbors. With our Sharing Advantage program, charity really *does* begin at home!



Marc Libby

400 Southborough Drive
South Portland, ME 04106
207-772-4701 Phone • 800-933-4701 Toll Free
207-232-6438 Cell • 207-761-7040 Fax
marc.a.libby@wellsfargo.com

1. Donations are made by the Wells Fargo Housing Foundation without any additional charge to your mortgage transaction.

2. The recipient organization must have status under 501(c) 3 of the Internal Revenue Code.

Wells Fargo Home Mortgage is a division of Wells Fargo Bank, N.A. ©2006 Wells Fargo Bank, N.A. All rights reserved. #39976 8/06-11/06



Investing in Equality

It's easy. It's painless. It's simple. It does a world of good. It makes you feel good. It's EqualityMaine's sustainer program.

"This is the way to go for me," says Cecelia Burnett, EqualityMaine board member. "I don't have to be reminded to write a check every month. I just have EqualityMaine take my donation from my checking account every month."

If you're like many folks, it's important to support the causes that matter so much to you. And donating your money as well as volunteering your time, energy and talents allows the organization to work on the issues so vital to our well-being. The sustainer program means that EqualityMaine is assured a steady and reliable income from day to day, month to month, to carry out its mission and vision for full equality for all Maine families.

Thanks to all our monthly Sustaining Partners for your ongoing support! •

Debbie Atwood

Frank Brooks & Marvin Ellison

Cele Burnett & Ann Swanson

Dean Crocker

Priscilla Coffin

Sarah Demarest & Darlene Huntress

Jessica Eller & Chris Fitze

Kathy Gagne

Laura Harper & Lauren Mier

Jennifer Hoopes & Betsy Smith

Nancy Hudak & Ernie Easter

Jean Lamond

Mary Malia, Malia Consulting Services

Pam McCann

Dale McCormick & Peaches Bass

Wendy Menard & Julie Cockley

Susan Pate

Kate & Erica Quin-Easter

Karl Rasche

Elizabeth Schneider

Dwight Sholes

Kyle Slayback

Lacey Sloan

Michael Stickney & Thomas Tabor

Tom Sumner & Jon Beking

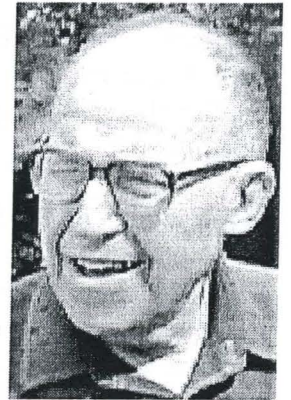
Thank you, Richard...

On Sunday, September 17th, EqualityMaine and the LGBT community lost a great friend and true advocate for equality with the passing of Dr. Richard Steinman, who lost his battle with cancer.

Richard was one of EqualityMaine's founders in 1984 and worked tirelessly for LGBT rights throughout the 80's, 90's and into the early 2000's.

Richard was always there—lobbying at the State House, participating in events, rallying for our rights, and providing immeasurable resources. The LGBT community benefited greatly from his wisdom and his commitment to equality.

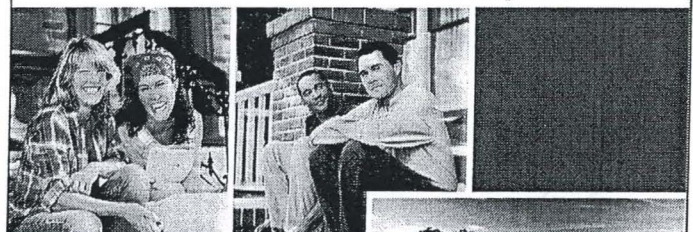
In Richard's obituary, his family requested that in lieu of flowers, donations may be made to EqualityMaine. •



The Next Stage[®]

Where can **our community** build wealth
and a secure financial future?

at home



The rewards of homeownership are many, personally and financially. And whether you're buying your first home, building a new one with your partner, remodeling or refinancing, you want financing that's perfectly suited to your life and your goals. Put your trust in Wells Fargo Home Mortgage and our commitment to the GLBT community. We understand your needs. And you can count on our expertise and support. We'll help you make informed home-financing decisions that are the right fit for you.

Make us your choice for homeownership.



Marc Libby

400 Southborough Drive • South Portland, ME 04106
207-772-4701 Phone • 207-761-7040 Fax
207-232-6438 Cell • 800-933-4701 Toll Free
marc.a.libby@wellsfargo.com

Wells Fargo Home Mortgage is a division of Wells Fargo Bank, N.A.
©2005 Wells Fargo Bank, N.A. All rights reserved. #33416 2/3/06



Make YOUR Pledge for Equality!

Become a Sustaining Partner

When you become a Sustaining Partner, your monthly donation helps provide steady, reliable income for EqualityMaine to respond quickly and effectively to discrimination and move Maine forward towards full equality.

\$10 a month adds up to \$120 each year, supporting EqualityMaine's youth-organizing efforts to educate, engage, and register young voters on college campuses.

\$25 a month adds up to \$300 each year, helping us do literature drops in targeted neighborhoods to educate voters about candidates' positions on issues of LGBT equality.

\$50 a month adds up to \$600 each year, supporting Get-Out-The-Vote efforts before Election Day to turn out pro-equality voters and ensure a pro-equality majority in the State House on November 7.

\$100 a month adds up to \$1200 each year, helping us produce a video featuring LGBT Mainers and their families talking about the discrimination they face and the need for marriage equality—and share that video with Maine legislators to let them know their constituents care about equality.

Become a Sustaining Partner today, and put your pledge to work for equality immediately.

✂

Sign me up as a Sustaining Partner! Please start charging my monthly contribution of:

☐ \$10 ☐ \$25 ☐ \$50 ☐ \$100 \$ _____

(Sustaining Partner pledges of any amount are welcome)

Card # _____ Exp. Date _____

Please direct my contribution to (check one):

____ EqualityMaine Foundation (501c3 educational arm, tax-deductible)

____ EqualityMaine (501c4 political arm, not tax-deductible)

Mail your pledge to EqualityMaine, PO Box 1951, Portland ME 04101 or fax to 207-761-3752. For more information or to join by phone, contact Erica Quin-Easter at (207) 761-3732 x 3002 or quineast@equalitymaine.org. Thanks for your Sustaining support!

Father Tom, ULC Ordained

WEDDINGS, CIVIL UNION CEREMONIES,
CUSTOMIZED RELATIONSHIP BLESSINGS

RELAX, UNWIND & ENJOY LIFE!

207-642-3828



VOGEL & DUBOIS
SOLUTIONS FOR YOUR FUTURE

Matthew R. Dubois
Attorney at Law

550 Forest Avenue, Suite 205
P.O. Box 3649, Portland, ME 04104
www.maine-elderlaw.com

Phone 207.761.7796
Fax 207.761.6946
mdubois@maine-elderlaw.com

NOW YOU
CAN MAKE
YOUR

SIGNIFICANT OTHER SIGNIFICANTLY MORE

Introducing MUSES™ LEGAL GUIDE TO LIVING TOGETHER. Specifically created for unmarried domestic partners, this easy-to-use CD-ROM gives you more than 150 legal agreements you and your partner can use to secure, define and declare your rights, responsibilities, and wishes for today and tomorrow.

Obtain state-specific customizable legal documents
(see our website for a complete list).

Protect your interests in estate planning, medical care and financial matters.

Enjoy peace of mind with domestic arrangements, insurance obligations and tax matters.

Decide how many rights to share, when they become effective, or when to terminate.

View all documents in their entirety before deciding which to use.

Fill out documents on your computer or print out and complete by hand.

PROTECTING YOUR FUTURE HAS NEVER BEEN EASIER

To order,
call 1.866.234.1162

or visit
www.MusesProducts.com

\$89.95



November Elections are Pivotal for LGBT Equality

(Continued from page 8)

discrimination law, they vote for fairness, not discrimination. This is one of the reasons why education on marriage equality is one of EqualityMaine's top priorities for the next several years.

In the Field:

EqualityMaine spent considerable time this summer studying the electoral field in the upcoming election. We identified eight legislative districts where pro-equality candidates were vulnerable and where our resources could make a significant impact.

Thanks to a generous contribution from the Human Rights Campaign, we have hired two full-time campaign organizers to help us turn out pro-equality voters in our eight targeted districts and across the state in the governor's race. We have a universe of 45,000 voters to turn out, which is made up of EqualityMaine members and supporters and pro-equality voters identified during the Maine Won't Discriminate campaign last year.

To turn out this number of voters, we must have a very large cadre of volunteers. We are currently recruiting volunteers on campuses, at progressive events, through phone banks, and at EqualityMaine house parties.

Staff and volunteers will conduct a series of literature drops to our universe of pro-equality voters in the eight targeted districts, to educate them on their candidates' positions on LGBT issues. Following the lit drops we will conduct a series of Get-Out-The-Vote phone banks, reminding voters of the importance of their pro-equality vote and urging them to vote early.

The Maine Won't Discriminate campaign last year was a testament to the power of collective action, as thousands of volunteers across the state turned out to ensure that the non-discrimination law stayed on the books. We will need a similar effort this year to ensure

we elect a pro-equality legislature in 2007. If we don't, the progress we have made could be rolled back in a heartbeat.

Targeted Legislative Districts:

Senate District # 6 – Gorham:

Senator Phil Bartlett (D) vs Jane Willett (R)

Senate District # 7 – South Portland:

Senator Lynn Bromley (D) vs Rep. Kevin Glynn (R)
& Keith Louis (G)

Senate District # 19 – Bath:

Senator Art Mayo (D) vs Paula Benoit (R)

Senate District # 32 – Bangor:

Senator Joe Perry (D) vs Frank Farrington (R)
& Eric Desmaris (U)

House District # 18 – Bangor:

Rep. Mike Dunn (D) vs John Simpson (R)

House District # 113 – Falmouth/Portland:

Rep. John Brautigam (D) vs David Elowitch (R)

House District # 125 – Westbrook:

Ann Peoples (D) vs Lyle Cramer (R)

House District # 128 – Scarborough:

Peggy Pendleton (D) vs Sylvia Most (R)
& Leo Tallarico (G)

For more information on becoming involved, please contact Darlene Huntress, 761-3732 ext. 3004, or email dhuntress@equalitymaine.org. •



Clara Porter (R) and husband Dan Holliday hosted a house party for EqualityMaine in September to talk with neighbors about the importance of marriage equality. Clara told her guests that denying marriage to LGBT families harms them by marking them as unworthy of the protections that families need to stay healthy and secure. Here, Clara shares a laugh with friend and neighbor Kate Quin-Easter. If you are interested in hosting a house party for EqualityMaine, please contact Erica Quin-Easter at quineast@equalitymaine.org.

Calling All Air America Radio Fans!

Join EqualityMaine's executive director Betsy Smith and her partner Jennifer Hoopes in hosting one of Air America Radio's favorite DJ's—Rachel Maddow. Betsy and Jennifer will host a brunch for Rachel Maddow on Sunday, October 29, 10:30am - 12:00pm at their Portland home. Tickets are on a sliding scale of \$50-\$10 and may be purchased on-line at www.equalitymaine.org or at the door. For directions, please contact Betsy at bsmith@equalitymaine.org.

Rachel Maddow

Rachel has a doctorate in political science (she was a Rhodes Scholar) and a background in HIV/AIDS activism, prison reform, and other lefty rabble-rousing. She shakes a mean cocktail, drives a bright red pickup, hates Coldplay, loves arguing with conservatives, spends a lot of money on AMTRAK tickets, and dresses like a first-grader. Maddow makes irregular appearances on MSNBC, CNN, LOGO, and other TV outlets. She's been with Air America since its inception in Spring 2004—before AAR she worked for WRNX in Holyoke, Massachusetts, and

WRSI in Northampton, Massachusetts. There was also a stint with a jungle-themed company called Espresso Bongo, but she doesn't want to talk about it.

Rachel is 33 years old and lives in New York City and rural Western Massachusetts with her partner, artist Susan Mikula. •



Your Voices Heard by Equity Fund

(Continued from page 6)

- leadership and participation in LGBT issues statewide.
- \$4,500 to **Hardy Girls Healthy Women** of Waterville to support the "Ugly Ducklings" project, which is designed to help communities in Maine create safe environments for gay, lesbian, transgender and questioning teens to live full lives (funding was directed towards rural communities).
- \$4,000 to disseminate the ground-breaking survey "Discrimination Against Gay, Lesbian, Bisexual and Transgender Individuals in Maine," which was written by Stephen Wessler, the current Executive Director of the **Center for the Prevention of Hate Violence**.
- \$2,000 towards the production of "The Laramie Project" in Bangor by the **Penobscot Theatre Company**, specifically the post-performance sessions that provided audience

members opportunity to discuss anew the impact on the Bangor community of the 1984 murder of Charlie Howard.

Since its creation, the Maine Equity Fund has distributed over \$155,000 in grants to 30 organizations and has created an endowment fund of just over \$150,000 to support future grantmaking. We are seeking grant applications from groups for our next deadline of September 15 and have secured \$16,000 for grants in 2006. We are also proud to announce a generous match of \$100,000 towards building our endowment for LGBT issues in Maine. Gifts to the Equity Fund endowment campaign will be matched 1:1, enabling us to grow a permanent endowment of funds to meet the needs of Maine's LGBT community.

For more information on applying for a grant or contributing to the endowment fund campaign, contact Jennifer Southard at (207) 761-2440 or jsouthard@mainecf.org, or visit our website: www.mainecf.org. •

RENEW YOUR MEMBERSHIP OR JOIN EQUALITYMAINE TODAY!

All EqualityMaine members receive a subscription to our quarterly newsletter, voting rights at the annual meeting, advance notice of community events, membership in the email Action Alert Network, opportunities to volunteer and the satisfaction of supporting equality for all. Contributions of any amount are counted towards membership – whether you can give \$1 or \$1,000, your membership makes a difference in promoting diversity and protecting the rights of LGBT people in Maine.

YES! I want to be a member of EqualityMaine! Enclosed is my contribution of:

☐ \$35 ☐ \$50 ☐ \$100 ☐ \$250 ☐ \$500 ☐ \$_____

Name _____

Address _____ City, State, ZIP _____

Telephone _____ Email _____

☐ Please charge this to my credit card. ☐ My check payable to Equality Maine is enclosed.

☐ Sign me up as a Sustaining Partner! Please start charging my monthly gift of \$10 / \$25 / \$50 / \$_____

Card # _____ Exp. Date _____ Name on card: _____

☐ I'd like to volunteer

☐ I have included EqualityMaine in my will

EQUALITYMAINE

PO Box 1951, Portland, ME 04104 • (207) 761-3732 • fax (207) 761-3752 • info@equalitymaine.org • www.equalitymaine.org

You can support EqualityMaine Foundation through payroll deduction!



MaineShare

Charitable Choices for Maine's Future

MaineShare funds 36 statewide organizations including EqualityMaine Foundation addressing environmental, economic opportunity, peace and justice, cultural diversity, the arts, and health service issues.

***Enroll your workplace for the 2006 campaign online at
www.maineshare.org or contact us directly.***

www.maineshare.org

giving@maineshare.org

P.O. Box 2095, Augusta, ME 04338, (207) 622-0105

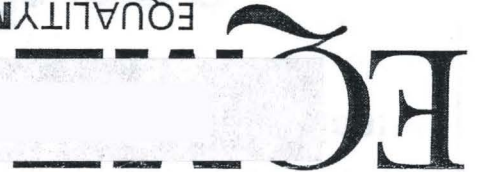
Join our
Action Alert Network!!
Sign up on-line at
www.equalitymaine.org

EqualityMaine Foundation
1 Pleasant Street, 2nd Floor
PO Box 1951
Portland, ME 04104
Tel: 207-761-3732
Fax: 207-761-3752
info@equalitymaine.org
www.equalitymaine.org

RETURN SERVICE REQUESTED

Nonprofit Org
U.S.
Postage
PAID
Portland, ME
Permit No. 740

EQUALITYMAINE



EqualityMaine Volunteer Opportunities

★ A special call to action to help us elect pro-equality candidates on November 7th!! ★

Upcoming opportunities:

Literature drops: Every Saturday morning at 11:30 Meet at the EqualityMaine office

Phone Banks: Every Monday through Thursday 5:30-8:30pm, at the EqualityMaine office

Data Entry: All Day Every Day!!

For more information, contact Darlene Huntress at 207-761-3732, ext 3004 or dhuntress@equalitymaine.org.

EqualityMaine is located at 1 Pleasant Street, 2nd floor, Portland