

1934

Green and White 1934

Gorham Normal School

Follow this and additional works at: https://digitalcommons.usm.maine.edu/archives_yearbook

 Part of the [History Commons](#)

Recommended Citation

Gorham Normal School, "Green and White 1934" (1934). *Yearbooks*. 9.
https://digitalcommons.usm.maine.edu/archives_yearbook/9

This Book is brought to you for free and open access by the University Archives at USM Digital Commons. It has been accepted for inclusion in Yearbooks by an authorized administrator of USM Digital Commons. For more information, please contact jessica.c.hovey@maine.edu.







GREEN and WHITE
1934

Theme: Industry

VOLUME XXVI

Published by
THE SENIOR CLASS
GORHAM NORMAL SCHOOL
GORHAM, MAINE



LAWRENCE NELSON CILLEY

GORHAM NORMAL SCHOOL, OSWEGO NORMAL SCHOOL,
STOUT INSTITUTE

Wordworking, Forging, Drafting, Trade and Job Analysis
Supervisor of Practice Teachers in Drafting, Grades 7 and 8

TO LAWRENCE NELSON CILLEY

who so believes in teaching by
doing, that his work will ever
be a source of inspiration and
knowledge to those that know
him; and whose sterling quali-
ties of coöperation and leader-
ship have contributed so largely
to the ideals of industry in
education at Gorham Normal
School, we respectfully dedicate
this volume of the
GREEN AND WHITE



FOREWORD

We, the Editorial Board of 1934, are happy in being able to dedicate this issue of the GREEN AND WHITE to Mr. Lawrence N. Cilley. We have chosen "Industry" as the theme and art motif of our book, as we feel that it is in keeping with Mr. Cilley's chosen field.

Although it has been necessary for us to make some very definite changes in our book, we feel that we have put our best effort into it and we offer it to you as our interpretation of life at Gorham Normal School.



Arrangement

Theme

Dedication

Foreword

Campus Scenes

Faculty

Alumni

Seniors

Juniors

Training School

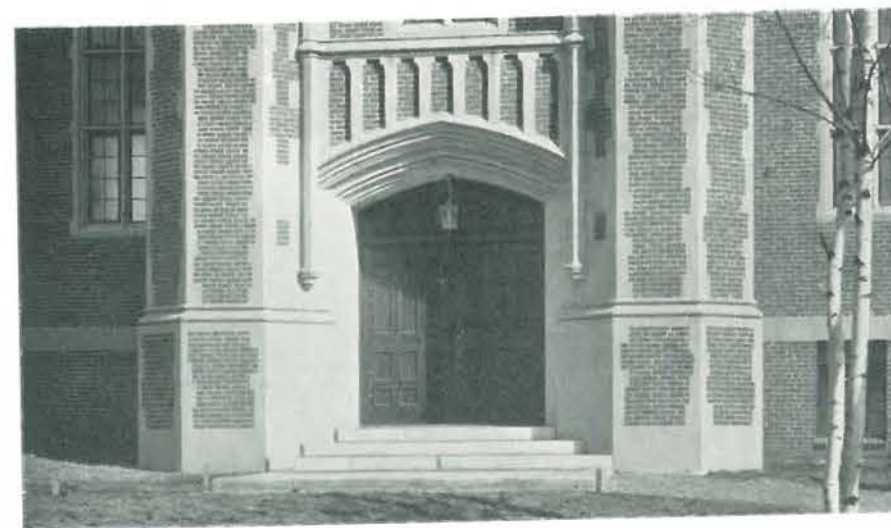
Athletics

Directory

Calendar



Entrance to Cortwell Hall



Main Doorway to Russell Hall



Russell Hall



Robie and East Halls



Cortell Hall from Russell Lawn



Campus Trees
Principal's Residence in Background



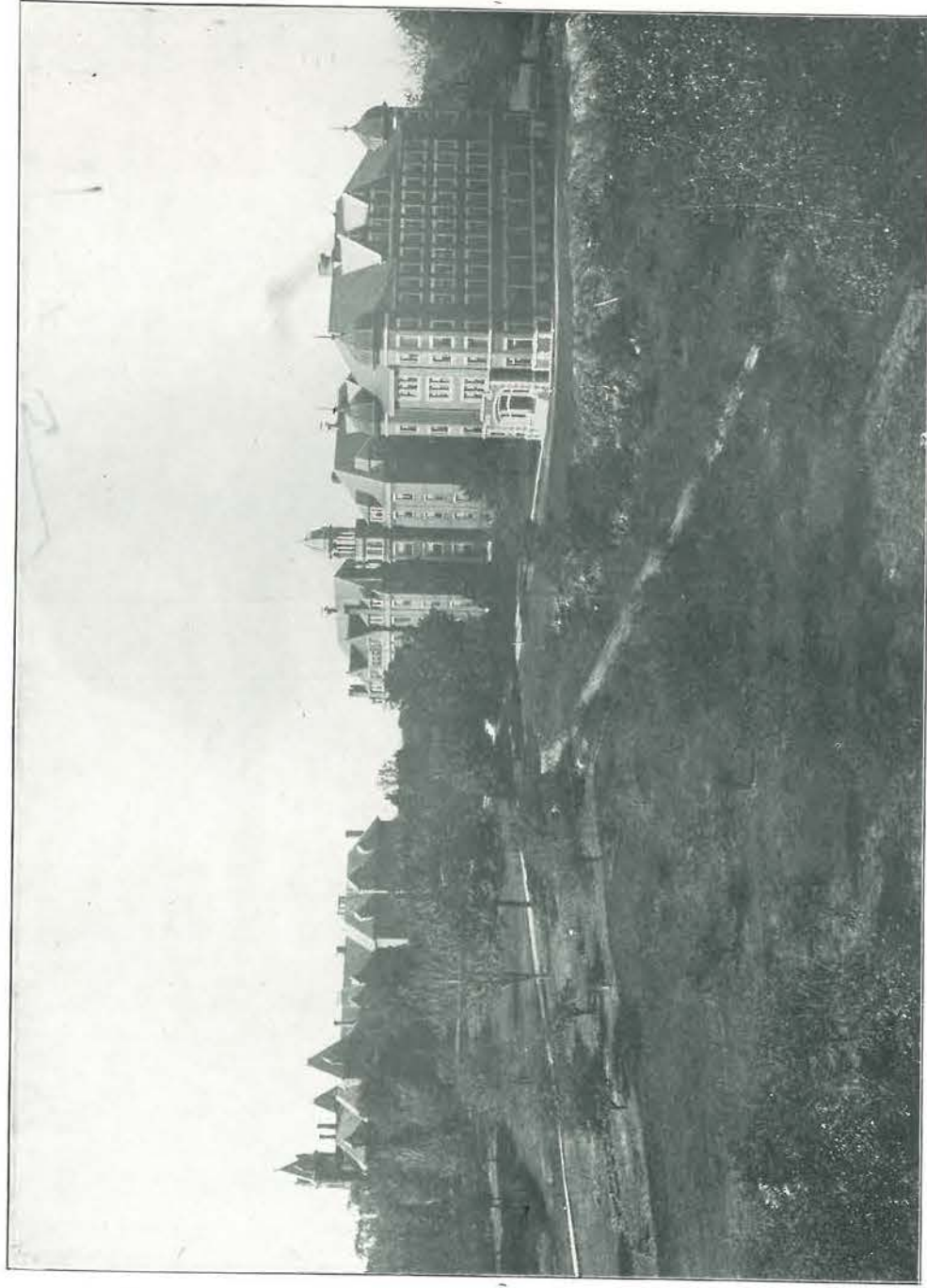
Junior High School



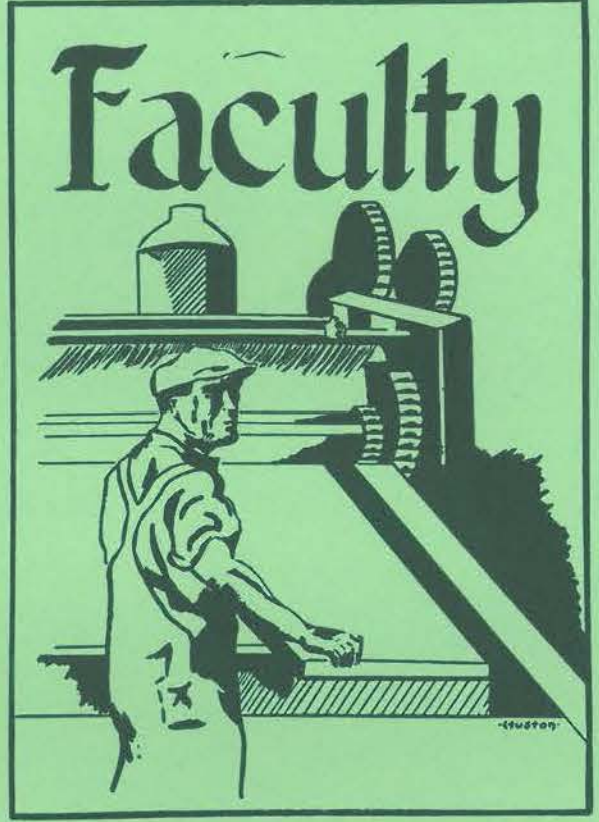
Forge and Machine Shop



Academy Hall



Campus



The title 'GREEN and WHITE' is printed in a green, stylized font. The word 'and' is in a smaller, simpler font between 'GREEN' and 'WHITE'. The entire title is framed by a decorative border consisting of a ruler at the top and bottom, and two screws on the left and right sides.

GREEN and WHITE

GORHAM

A sunny hill beneath a sunny sky
With friendly buildings grouped among the trees
And grass and flowers; is knowledge born of these?
Laughing friends to make the play hours fly,
And friends to help us solve eternal why;
If we seek wisdom, are not they the keys?
And books;—the slanting sun believes in these
And touches one by one as she goes by
The books upon the shelf. Wisdom indeed
Is got from all of these but not from one,
And here, for us, are friendship, books and beauty,
The great things and the little things we need.
Stay here and glean awhile; when you are done
Go forth and share; but do not call it duty.

Barbara Howard.



WALTER EARLE RUSSELL, A. B., D. Ed.
(WESLEYAN UNIVERSITY, RHODE ISLAND COLLEGE OF EDUCATION)
Principles of Teaching

PRINCIPAL'S MESSAGE

To the Class of 1934:

It was Dr. John Finley, one time Commissioner of Education in the great State of New York, who called the young people of that state his young *multimillionaires*, because they had many millions more minutes to live than had he. You too belong to that class. You are multimillionaires. That evaluation of youth is no figment of the imagination. If you think it is, ask any gray-haired Midas which he would rather have, the dollars he has accumulated or the minutes he has spent. Don't let this wealth of youth elate you or depress you. It is freighted with the possibilities of good or evil. It may bring Elysian joy or utter despair. You determine which.

WALTER EARLE RUSSELL.

GREEN and WHITE



WALTER EARLE RUSSELL, A. B., D. Ed.
WESLEYAN UNIVERSITY, RHODE ISLAND COLLEGE OF
EDUCATION

Principles of Teaching.
"What does your author say?"



GERTRUDE LINCOLN STONE, B. S., A. M.
FARMINGTON NORMAL SCHOOL, COLUMBIA UNIVERSITY
Psychology, Rural Sociology, History of Education.

"That is as false as false can be."



LOUIS BURTON WOODWARD, A. B., A. M.
BATES COLLEGE, HARVARD UNIVERSITY
Natural Sciences, Social Sciences.

"Are there any questions over the last assignment?"

GREEN and WHITE



JESSIE LOUISE KEENE, Ph. B.
WESLEYAN UNIVERSITY

Industrial Arts, Bird Study, Science.
*"I wonder if you saw as many birds on the way to
school as I did."*



GEORGE ALBION BROWN
GORHAM NORMAL SCHOOL, COLUMBIA UNIVERSITY
Woodworking, Machine Shop, Theory of Electrical
Application.

*"We'll get this as nearly perfect as machinery and
man can do."*



LAWRENCE NELSON CILLEY
GORHAM NORMAL SCHOOL, OSWEGO NORMAL SCHOOL,
STOUT INSTITUTE

Woodworking, Forging, Drafting, Trade and Job
Analysis, Supervisor of Practice Teachers in Drafting,
Grades 7 and 8.

"Be more specific."

GREEN and WHITE



MARY LOUISE HASTINGS

CASTLETON NORMAL SCHOOL, COLUMBIA UNIVERSITY
SUMMER SCHOOL, HYANNIS NORMAL SUMMER SCHOOL

Director of Practice Work, Observation and Discussion.

"That's very good, but,—"



MABEL FRANCES RYAN, B. S.

BOSTON UNIVERSITY

Geography, Science.

"What wind belt is it in?"



NELLIE WOODBURY JORDAN, B. S.

BOSTON UNIVERSITY, HARVARD SUMMER SCHOOL,
COLUMBIA UNIVERSITY, PALMER SCHOOL OF
PENMANSHIP

History, Penmanship.

"There are a few matters I'd like to discuss."

GREEN and WHITE



MIRIAM EUNICE ANDREWS, B. S.
COLUMBIA UNIVERSITY, NEW ENGLAND CONSERVATORY
OF MUSIC, JUIILLARD SCHOOL OF MUSIC

"I'll bet you a nickel."



CLIFFORD O. T. WIEDEN, B. S.
ACADIA UNIVERSITY, BATES SUMMER SCHOOL, COLBY
COLLEGE

Education, Sociology, Economics, Athletics.

"Now for the sake of argument—"



EVERETT SHERMAN PACKARD
GORHAM NORMAL SCHOOL, OSWEGO NORMAL SUMMER
SCHOOL, RUTGERS SUMMER SCHOOL

Printing, Sheetmetal, Athletics.

"Now says I to Mary."

and GREEN WHITE



JEANETTE SHIRLEY JOHNSON, B. S.
GORHAM NORMAL SCHOOL, BOSTON UNIVERSITY
Composition, Literature.
"Speak of it."



HELENE CATHERINE WIHRY, B. S.
MASSACHUSETTS SCHOOL OF ART
Art.
"That's nice; what is it?"



ESTHER ELIZABETH WOOD, A. B., A. M.
COLBY COLLEGE, RADCLIFFE COLLEGE
History.
"There's an interesting story connected with that."

and GREEN WHITE



EVELYN LITTLEFIELD, A. B.
DEFIANCE COLLEGE
Home Arts, Science.
"All right, girls."



VELMA LUCILE HOLBROOK, A. B., Ed. M.
WHEATON COLLEGE, HARVARD UNIVERSITY GRADUATE
SCHOOL OF EDUCATION
French and Latin.
"What can you do about it?"



ETHELYN FOSTER UPTON, B. S., A. M.
GORHAM NORMAL SCHOOL, COLUMBIA UNIVERSITY
Mathematics.
"Who will volunteer to—?"

and GREEN WHITE



BESS LEWIS, A. B., M. S.
HIRAM COLLEGE, OHIO; STATE COLLEGE, OREGON
Literature.
"Now I suggest."



LYDIA MAY JENCKS, B. S., A. M.
RHODE ISLAND STATE COLLEGE, BROWN UNIVERSITY
Librarian, Library Science.
"No one has been given permission to talk in the library."



DOROTHY FLINT, B. A., M. S.
CERTIFICATE OF THE DEPARTMENT OF HYGIENE AND
PHYSICAL EDUCATION, WELLESLEY COLLEGE
Health Education and Physical Education.
"Copy everything on the bulletin board."

and GREEN WHITE



LOIS ELEANOR PIKE
GORHAM NORMAL SCHOOL, HARVARD SUMMER SCHOOL,
COLUMBIA UNIVERSITY SUMMER SCHOOL
Primary Arithmetic, Primary Reading.
"Now the reason I mention this is—"



EMMA FRANCES HARRIS
WHELOCK KINDERGARTEN TRAINING SCHOOL,
BOSTON UNIVERSITY
Supervisor of Kindergarten, Kindergarten Theory.
"I'm talking, girls."



HAYDEN L. V. ANDERSON, B. S. IN ED.
GORHAM NORMAL SCHOOL, BOSTON UNIVERSITY
Principal, English.
"Let's have the doors closed."

and GREEN WHITE



HARRIETTE GAYNELL TRASK

EASTERN STATE NORMAL SCHOOL, COLUMBIA UNIVERSITY SUMMER SCHOOL, HARVARD SUMMER SCHOOL, HYANNIS NORMAL SUMMER SCHOOL

History and Geography in Junior High School.

"If you don't have your pencil in your hand you won't drop it."



ETHELIND IZORA SCOTT, B. S. IN ED.

BOSTON UNIVERSITY

Mathematics and General Science in Junior High School.

"Nobody knows."



NORMA GLADYS THURSTON

GORHAM NORMAL SCHOOL

Supervisor of Grades 5 and 6.

"Now I want you people to do this—"

and GREEN WHITE



RUTH LOUISE MILLER

GORHAM NORMAL SCHOOL

Supervisor of Grades 3 and 4.

"What do you people come to school for, to work or to play?"



L. ALICE WETHERELL

GORHAM NORMAL SCHOOL

Supervisor of Grades 1 and 2.

"We're going to have a surprise."



MARY L. PEDERSON

GORHAM NORMAL SCHOOL, CASTINE NORMAL SCHOOL

Supervisor of Modern Rural School, West Gorham.

"How? Why?"



GORHAM NORMAL SCHOOL ALUMNI ASSOCIATION

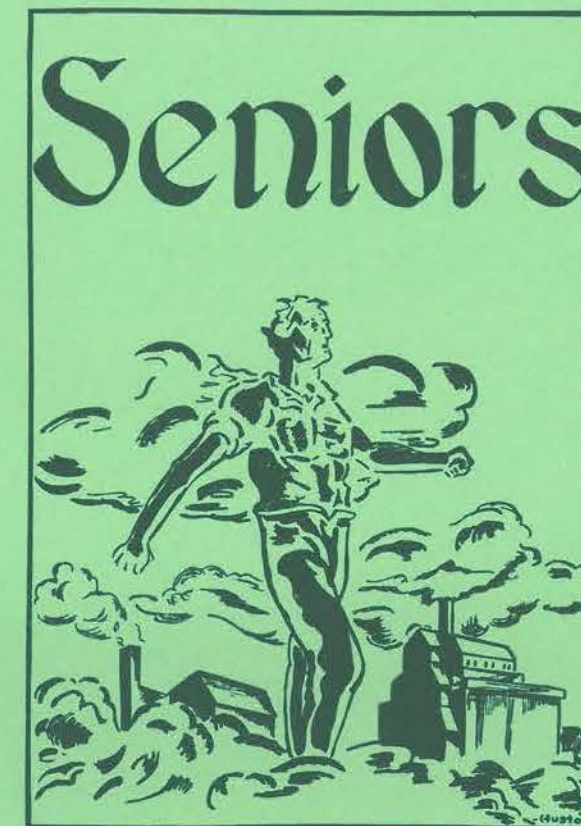
President LOIS PIKE
Vice-President HAYDEN S. V. ANDERSON
Recording Secretary GEORGIANA C. HAYES
Corresponding Secretary and Treasurer ... DOROTHY KIMBALL
Auditor NORMA THURSTON

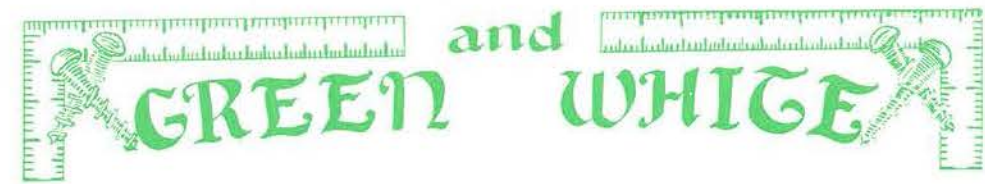
SOUTHERN NEW ENGLAND BRANCH OF GORHAM NORMAL SCHOOL ALUMNI

President MRS. MARIE ELLIOTT JOHNSON
Vice-President MISS NORA NASON
Secretary MISS PAULINE STUART
Treasurer MISS HAZEL BECKETT
Clerk of Records MRS. BERTHA FILLS

PORTLAND AND SOUTH PORTLAND BRANCH OF GORHAM NORMAL SCHOOL ALUMNI

President MRS. MARCELLA LEE DAVIS
First Vice-President MISS LUELLA HASKELL
Second Vice-President MISS MARION SKILLINGS
Secretary MRS. DENNIS O'BRIEN
Corresponding Secretary MRS. MAUDE MOODY
Treasurer MRS. RALPH BRAGDON





ADVANCED SENIORS

OFFICERS

President, LOUIS JENSEN

Vice-President, PHILIP BUNKER

Secretary, REUBEN SMITH

Treasurer, DANIEL WIGHT

Carlyle once said, "Blessed is the man who has found his work." I believe that most of us would agree with him. We, as prospective teachers, have chosen our life work and our years in Normal School have done much to bring out in us our stored-up capacities for work and industry. They have helped us to build character, to strengthen our ideals, and to construct a background for our future lives.

We have met many obstacles but have overcome them through our perseverance and work. We have learned that the best preparation for good work tomorrow is good work today. A good quotation to live by from day to day is:

*"Every today well lived
Makes every yesterday a dream of happiness,
And every tomorrow a vision of hope."*

and GREEN WHITE

ADVANCED SENIORS, JUNIOR HIGH



BURNETTE BAILEY *Bunny*
Morse High School Woolwich, Maine
Outdoor Club, Campfire, Y. W. C. A., House Committee, Basket-
ball, Volleyball, Hockey, Soccer, Baseball, Track.

LEONA BARNES *Lee*
Portland High School Portland, Maine
Commuters' Club, Outdoor Club.



RUTH A. BEAL
South Portland High School South Portland, Maine
Basketball, Hockey, Oracle Staff, Commuters' Club.

MARGUERITE BOYCE *Wig*
Portland High School Portland, Maine
Y. W. C. A., Outdoor Club, Civic Committee, Oracle Staff,
Library Club, Hockey, Basketball, Athletic Council, Campfire,
Baseball.



JAMES F. BRADBURY *Jimmie*
Gorham High School Hollis Center, Maine
Commuters' Club.

RUTH BRALEY
Gorham High School Buxton, Maine
Commuters' Club.



FRANCES CORNELL *Fran*
Westbrook High School Westbrook, Maine
Commuters' Club.

EDNA M. DELANEY
New Bedford High School New Bedford, Massachusetts
Dramatic Club, Massachusetts Club, Outdoor Club, Glee Club,
Y. W. C. A., Poetry Club, Soccer, Hockey, Civic Committee.



BERNICE DICKERSON
Biddeford High School Biddeford, Maine
Y. W. C. A., Glee Club, Poetry Club, Outdoor Club, York County
Club.

F. ELIZABETH FOSS *Lib*
Eliot High School Eliot, Maine
York County Club, Y. W. C. A.



and GREEN WHITE



DAVID GALLISON *Dave*
Higgins Classical Institute Hancock Point, Maine
Lambda Pi Sigma, Athletic Council, President "G" Club.

PHILIP GANNON *Phil*
Beverly High School South Portland, Maine
Oracle, Lambda Pi Sigma, Civic Committee, Glee Club.



CLAYTON HARTFORD *Clate*
Buxton High School Buxton, Maine
Alpha Lambda Beta, Commuters' Club.



LOUIS JENSEN *Louie*
Westbrook High School Westbrook, Maine
"G" Club, Lambda Pi Sigma, Civic Committee, Commuters' Club,
Class President, Basketball, Baseball.



ERNEST LEROY LIBBY *Lib*
Pennell Institute Gray, Maine
Civic Committee, Orchestra, Alpha Lambda Beta, Glee Club,
Basketball.



HAZEL LYNCH *Tony*
South Portland High School South Portland, Maine
Commuters' Club.

MARY BARBARA MCCARTHY
Cathedral High School Portland, Maine
Commuters' Club, Poetry Club.

ELIZABETH MERRILL *Lib*
Pennell Institute Gray, Maine
Y. W. C. A., Glee Club, Orchestra, GREEN AND WHITE, Civic
Committee, Outdoor Club, Oracle.

PAUL W. MOODY *Skip*
Gorham High School Gorham, Maine
Commuters' Club, Class Athletic Council, GREEN AND WHITE.

MILTON NELSON *Milt*
Westbrook High School Westbrook, Maine
Lambda Pi Sigma, Orchestra, Commuters' Club, Lambda Pi
Sigma Orchestra.



and GREEN and WHITE



STELLA A. NICHOLS *Nick*
Windham High School Windham, Maine
Basketball, Dramatic Club, Glee Club, Poetry Club, Y. W. C. A.,
Outdoor Club.

SEBINA HELEN REGINA *Sib*
Biddeford High School Biddeford, Maine
Y. W. C. A., Campfire, Glee Club, Outdoor Club, Volleyball,
Basketball, Hockey, Baseball.



FRANCES SMITH
Portland High School Portland, Maine
Commuters' Club, Oracle, Poetry Club.

DANIEL W. SNOW *Danny*
Scarboro High School West Scarboro, Maine
Lambda Pi Sigma, Commuters' Club, Civic Committee.



SELMA STOCKBRIDGE *Sally*
Portland High School Portland, Maine
Commuters' Club, Oracle, Poetry Club.

ARDEN TARBOX *Red*
Hollis High School Hollis Center, Maine
Finance Committee, Civic Committee.



WINIFRED THORNTON *Winnie*
Cathedral High School Portland, Maine
Civic Committee, Poetry Club.

ELEANOR TRASK *Elly*
Beverly High School Beverly, Massachusetts
Y. W. C. A., Massachusetts Club, Outdoor Club, House Com-
mittee.



MILDRED ANNIE TURNER *Milly*
Cony High School, Farmington Normal School
Jefferson, Maine
Y. W. C. A., Campfire, Outdoor Club, Library Club, National
Honor Society, Oracle, Civic Committee.

BARBARA WAKEFIELD *Barbie*
Portland High School Cape Porpoise, Maine
Outdoor Club, Y. W. C. A., House Committee, York County
Club, Oracle Advisory Board.



VICTOR WALKER *Vic*
Westbrook High School Westbrook, Maine
Civic Committee, Commuters' Club.



HAROLD W. WEST
Westbrook High School Westbrook, Maine
Lambda Pi Sigma, Basketball.



and GREEN and WHITE



VICTOR WALKER *Vic*
Westbrook High School Westbrook, Maine
Civic Committee, Commuters' Club.



HAROLD W. WEST
Westbrook High School Westbrook, Maine
Lambda Pi Sigma, Basketball.



THE SCHOOL ON THE HILL

There's a bonny, bonny spot
That we hold most dear,
There are hours and days
That are full of cheer:
There's a beautiful hill
That will ne'er be forgot
And the dear old school
In that bonny, bonny spot.

There's a bonny, bonny spot
Where the green and white
Proudly waves on high
As a beacon light.
May our lives be as true
As its meaning has taught,
While we work and sing
In this bonny, bonny spot.

REFRAIN

Oh the tasks are hard,
And the days are long,
But we conquer all
With a cheering song,
And the G. N. S.,
Whate'er her lot,
Will be loved for aye
In that bonny, bonny spot.

GREEN and WHITE

ADVANCED SENIORS, INDUSTRIAL ARTS



PAUL E. BOOTHBY *Boo*
Edward Little High School Auburn, Maine
Basketball, Volleyball, Alpha Lambda Beta, Y. M. C. A., Base-
ball, Tennis, Glee Club, Civic Committee.

PHILIP B. BUNKER *Phil*
Brewer High School Bucksport, Maine
GREEN AND WHITE.



FRANKLIN E. HANNAFORD *Hank*
Westbrook High School Westbrook, Maine
Lambda Pi Sigma, Commuters' Club.

ARTHUR E. PRESCOTT *Scotty*
Westbrook High School Westbrook, Maine
Commuters' Club, Alpha Lambda Beta, Interclass Basketball.



MERVIN E. SHAIN *Merv*
Woodland High School Woodland, Maine
Washington-Hancock County Club, Alpha Lambda Beta, Enter-
tainment Committee, Glee Club, Y. M. C. A.

REUBEN SMITH *Bud*
Anson Academy North Anson, Maine
GREEN AND WHITE, Lambda Pi Sigma, Advisory Board of
Oracle, Glee Club, Entertainment Committee, Y. M. C. A.



PHILIP B. TARBOX *Red*
Westbrook High School Westbrook, Maine
Commuters' Club, Alpha Lambda Beta.

DANIEL M. WIGHT *Dan*
Gould Academy Bethel, Maine
Dramatic Club, Oracle, Civic Committee, Class Basketball,
Class Baseball, Orchestra, Glee Club, Class Tennis, Class Cross
Country, Oxford County Club.



EARLE WILDES *Wildesy*
Milton High School Milton, Massachusetts
Alpha Lambda Beta, Y. M. C. A., York County Club.



GREEN and WHITE

SENIORS, GENERAL COURSE

OFFICERS

President, ANNE RUBINSKY Vice-President, MARY ELIZABETH TIBBETTS
Secretary, JOANNA STONE Treasurer, RUTH ANN STAPLES

Labor Omnia Vincit
(Work Conquers Everything)

"All true work is sacred; in all true work, were it but true hand-labor, there is something of divineness," said Thomas Carlyle, one of the greatest English writers of the last century.

Whatever you undertake, you work to succeed. At least once in your life you start a job that seems to you impossible to accomplish, but you plug on with the hope of finishing. At last the task is done and then you are ready for another. What enjoyment is there in life if one doesn't work? The man who goes into the forest, season after season, to clear the woods away, finds no fun in it until spring comes and he sees what he has done. The joy of the task is not at the beginning, but at the end.

We have made teaching our aim in life. In order to make this aim a success, we have come to realize the importance of character, initiative, and coöperation. We have seen the value of having high ideals and have been given a clearer idea of the purposes of life. We realize that as we step into life's field of action, it is a place of larger opportunities and greater responsibilities.

During the two happy years we have spent at Gorham Normal School, we have encountered obstacles that have loomed up like mountains. For some it was easy to conquer; for others, it was a continual struggle; but it was work that conquered them all for each of us. And now as we go forth to take up our life work, let us put our shoulder to the wheel, and remember, "Work conquers everything."

and GREEN WHITE



In Memory of
Harriet Johnson
Born August 9, 1914
Died October 4, 1933

and GREEN WHITE

SENIORS, GENERAL COURSE



CHARLOTTE HARN BAILEY
Mattanawcook Academy
Outdoor Club, Penobscot County Club.

Muff
Lincoln, Maine



RACHEL BENNET
Deering High School
Oracle, Glee Club.

Rae
Woodfords, Maine



FLORENCE BENSON
Wiscasset Academy

Jefferson, Maine



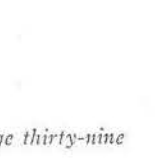
MARY L. BICKFORD
Lincoln Academy
Basketball, Lincoln County Club, Outdoor Club, Dramatic Club,
Glee Club.

Bicky
Damariscotta, Maine



FRANCES ELEANOR BOULTER
Buxton High School
Commuters' Club.

West Buxton, Maine



ESTHER A. BROCK
Waterboro High School
Commuters' Club, Library Club.

Brockie
Waterboro, Maine



MINNIE E. BROWN
Waterville High School
Y. W. C. A., Outdoor Club, Glee Club, Campfire, Oracle
Advisory Board, GREEN AND WHITE.

Min
Waterville, Maine

HELEN E. BRUCE
Stearns High School
Penobscot County Club, Dramatic Club.

Brucie
Millinocket, Maine

ELIZABETH LAURA CASHMAN
Greely Institute
Library Club, Glee Club, Y. W. C. A., Outdoor Club, Basketball.

Beb
Cumberland Center, Maine

MYRTIS MAE CLOUGH
Lawrence High School

Lawrence, Massachusetts



and GREEN WHITE



MARY DOROTHY COLBY *Colby*
South Paris High School South Paris, Maine
Y. W. C. A., Oxford County Club, Outdoor Club, Basketball.



ELVA L. COTTER *Elvie*
High School of Commerce Springfield, Massachusetts
Y. W. C. A., Outdoor Club.



PATRICIA EUGENIE COUSINS *Patsy*
Fort Kent High School, Madawaska Training School
Fort Kent, Maine
Art Club, Outdoor Club, Poetry Club, Y. W. C. A.



THELMA L. CRANE *Thelly*
Winter Harbor High School Winter Harbor, Maine
Washington-Hancock County Club, Poetry Club.



CHRISTINE DAVIS *Chris*
Porter High School Kezar Falls, Maine
Outdoor Club, Y. W. C. A., Basketball, Oxford County Club.



CAROLINE DEVANE *Cal*
St. Joseph's Academy Portland, Maine
Y. W. C. A., Civic Committee, Dramatic Club, Glee Club, Outdoor Club.

MARION L. EARLE
York High School York Village, Maine
York County Club, Y. W. C. A.

PRISCILLA GALE ELLIS
Milo High School Bar Harbor, Maine
National Honor Society, Y. W. C. A., Oracle Board, Glee Club.

HARRIET ETHEL ESTABROOK *Binks*
Thornton Academy Sanford, Maine
Y. W. C. A., York County Club, Outdoor Club.



BEATRICE MELVA COOK *Bea*
Cornish High School West Baldwin, Maine
Dramatic Club, House Committee, Campfire, Library Club, Outdoor Club, Athletic Council, Y. W. C. A., Baseball, Basketball, Volleyball, Hockey.



ELVA L. COTTER *Elvie*
High School of Commerce Springfield, Massachusetts
Y. W. C. A., Outdoor Club.



PATRICIA EUGENIE COUSINS *Patsy*
Fort Kent High School, Madawaska Training School
Fort Kent, Maine
Art Club, Outdoor Club, Poetry Club, Y. W. C. A.



THELMA L. CRANE *Thelly*
Winter Harbor High School Winter Harbor, Maine
Washington-Hancock County Club, Poetry Club.



CHRISTINE DAVIS *Chris*
Porter High School Kezar Falls, Maine
Outdoor Club, Y. W. C. A., Basketball, Oxford County Club.

and GREEN WHITE



SYLVIA ANNE FITZMORRIS *Fitzie*
Ellsworth High School Ellsworth Falls, Maine
House Committee, Glee Club, Washington-Hancock County Club, Dramatic Club.



CAROLYN M. FLOYD *Cal*
Portland High School Long Island, Maine
Glee Club, Outdoor Club.



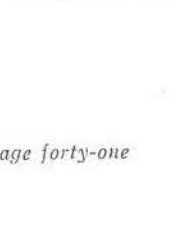
DOROTHY FROST *Dot*
Edward Little High School East Poland, Maine
Outdoor Club, Y. W. C. A., Oxford County Club.



MARJORIE WAGG FROST *Margie*
Brunswick High School Brunswick, Maine
Y. W. C. A., Glee Club, Outdoor Club.



M. ELLEN GATES
Stearns High School Millinocket, Maine
Outdoor Club, Aroostook-Penobscot County Club, House Committee, Y. W. C. A.



BARBARA A. GERRY *Barbie*
Stearns High School Millinocket, Maine
Penobscot County Club.

EVA VIOLA HALL *Eve*
Bridgton High School Bridgton, Maine
Dramatic Club, Y. W. C. A.

VIRGINIA MAXINE HANNA *Gin*
Bristol High School New Harbor, Maine
Lincoln County Club, Dramatic Club, Baseball.

AVIS MARTHA HINDS *A*
Stephens High School Rumford, Maine
Glee Club, National Honor Society, Y. W. C. A., Outdoor Club, Tennis, Entertainment Council.

ETHEL MAE HOLBROOK
Kent's Hill Seminary South Thomaston, Maine
Outdoor Club, Campfire, Y. W. C. A.



SYLVIA ANNE FITZMORRIS *Fitzie*
Ellsworth High School Ellsworth Falls, Maine
House Committee, Glee Club, Washington-Hancock County Club, Dramatic Club.



CAROLYN M. FLOYD *Cal*
Portland High School Long Island, Maine
Glee Club, Outdoor Club.



DOROTHY FROST *Dot*
Edward Little High School East Poland, Maine
Outdoor Club, Y. W. C. A., Oxford County Club.



MARJORIE WAGG FROST *Margie*
Brunswick High School Brunswick, Maine
Y. W. C. A., Glee Club, Outdoor Club.



M. ELLEN GATES
Stearns High School Millinocket, Maine
Outdoor Club, Aroostook-Penobscot County Club, House Committee, Y. W. C. A.

BARBARA A. GERRY *Barbie*
Stearns High School Millinocket, Maine
Penobscot County Club.

EVA VIOLA HALL *Eve*
Bridgton High School Bridgton, Maine
Dramatic Club, Y. W. C. A.

VIRGINIA MAXINE HANNA *Gin*
Bristol High School New Harbor, Maine
Lincoln County Club, Dramatic Club, Baseball.

AVIS MARTHA HINDS *A*
Stephens High School Rumford, Maine
Glee Club, National Honor Society, Y. W. C. A., Outdoor Club, Tennis, Entertainment Council.

ETHEL MAE HOLBROOK
Kent's Hill Seminary South Thomaston, Maine
Outdoor Club, Campfire, Y. W. C. A.

and GREEN WHITE



MARGUERITE LOUISE JAMES
Westbrook High School
Outdoor Club, Commuters' Club. Westbrook, Maine

SENA ELENE JENSEN
Gorham High School
Commuters' Club, Orchestra, Basketball, Glee Club. Westbrook, Maine *See*



ELEANOR A. KANE
Brooklin High School
Outdoor Club, Washington-Hancock County Club. Brooklin, Maine *El*

ALICE DOROTHY KING
Cathedral High School
Library Club, Y. W. C. A., Outdoor Club, Poetry Club. Peaks Island, Maine *Al*



NELLIE ESTHER KING
Morse High School
Glee Club, Outdoor Club, Y. W. C. A. Bath, Maine

BETTY HARRIET KINNEY
North Yarmouth Academy
Y. W. C. A., Outdoor Club, Oracle Staff. Yarmouth, Maine *Bet*



NATHALIE LOTHROP
Scarboro High School
Commuters' Club, Library Club. West Scarboro, Maine *Nal*

BARBARA LYMBURNER
Sedgwick High School
Salmagundi Club. Portland, Maine *Barb*



ARLENE S. MACMILLAN
Stearns High School
Outdoor Club, House Committee, Aroostook-Penobscot County Club, Glee Club, Y. W. C. A. Millinocket, Maine

LILLIAN G. MANCHESTER
Windham High School
Commuters' Club, Library Club. North Windham, Maine *Lil*



NINA FLORINE MARSH
Gorham High School
Commuters' Club, Glee Club. South Gorham, Maine *Nine*



ELEANOR LOUISE MARTIN
Gorham High School
Commuters' Club, Glee Club. West Gorham, Maine



SARA McALLISTER
Gorham High School
Glee Club, Dramatic Club, Poetry Club. Gorham, Maine *Sally*



MARGARET McINTYRE
Stevens Academy
Y. W. C. A., Outdoor Club, Washington-Hancock County Club. Bluehill, Maine *Peg*



NATALIE ROSE OSIER
Bristol High School
Oracle Staff, Outdoor Club, Lincoln County Club. New Harbor, Maine *Nat*



LUCY BELLE OULTON
Portland High School
Glee Club, Outdoor Club, Basketball. Portland, Maine *Belle*



MARJORIE ELIZABETH PALMER
Morse High School
Y. W. C. A., National Honor Society, Glee Club. Bath, Maine *Marge*



MARION ELIZABETH PARKMAN
Newport High School
Y. W. C. A., Campfire. Newport, Maine *Minnie*

RUTH ARLINE PITTS
Bridgton Academy
Y. W. C. A., Salmagundi Club. Naples, Maine *Rufus*

MARIE MADOLYN PORELLO
Westbrook High School
Commuters' Club. Westbrook, Maine *Mac*



and GREEN WHITE



BESSIE COLE RAWSON *Rawsie*
South Paris High School South Paris, Maine
Y. W. C. A., Outdoor Club, Oxford County Club.



EUNICE E. REED *You*
Maine Central Institute McKinley, Maine
Dramatic Club, Civic Committee, Outdoor Club, National Honor Society, Y. W. C. A.



ALTHA E. RENELL
Brighton High School Island Pond, Vermont
Y. W. C. A., Outdoor Club, GREEN AND WHITE Board, Civic Committee.



LOUISE ROSE
Leavitt Institute North Turner, Maine
Outdoor Club.



ANNE P. RUBINSKY
Portland High School Portland, Maine
Oracle, Civic Committee, Dramatic Club, Poetry Club, Commuters' Club.



FLORENCE ADELAIDE SCOTT *Scottie*
Portland High School Portland, Maine
Commuters' Club, Art Club.

HILDA GERTRUDE SCOTT *Scottie*
Morse High School Bath, Maine
Y. W. C. A., Outdoor Club, Oracle, Entertainment Committee.

BEVERLY J. SOPER *Bev*
Newport High School Newport, Maine
Y. W. C. A., House Committee, Campfire.

MARIE J. SOPER
Newport High School Newport, Maine
Civic Committee, Dramatic Club, Art Club, Campfire, Recreation Council.

CLEO VIVIENNE STEVENS
Stearns High School Millinocket, Maine
Aroostook-Penobscot County Club, Dramatic Club.



JOANNA STONE
Bridgton High School Bridgton, Maine
Glee Club, Oracle Staff.



AUDREY LOIS TURNER *Audie*
Beverly High School Beverly, Massachusetts
Art Club, Volleyball, Salmagundi Club.



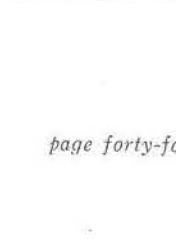
HARRIETTE E. TYLER *Hattie*
Brooklin High School Brooklin, Maine
Washington-Hancock County Club, Outdoor Club.



NORMA B. WILLISTON
Deering High School Portland, Maine
Art Club, Y. W. C. A.



CLARA MARGARET FARNSWORTH *Clare*
Deering High School Portland, Maine
Commuters' Club, Art Club.



EVA KNOWLES
Coburn Classical Institute Portland, Maine
Commuters' Club, Library Club.

"A teacher builded a temple,
She wrought with skill and care,
Forming each pillar with patience,
Laying each stone with care.
None saw the unceasing effort;
None knew of the marvelous plan;
For the temple the teacher builded
Was unseen by the eyes of man."

"Gone is the builder's temple,
Crumbled into dust,
Pillars and groins and arches,
Food for consuming rust.
But the temple the teacher builded
Shall endure while the ages roll;
For that beautiful unseen temple
Was a child's immortal soul!"

and GREEN WHITE

SENIORS, KINDERGARTEN COURSE



HELEN D. ABBOTT
Deering High School
Civic Committee, Dramatic Club. Portland, Maine

FRANCES ATHERTON
Windham High School
Y. W. C. A. South Windham, Maine *Frannie*



CECELIA BLAKE
Deering High School
Orchestra, Outdoor Club, Glee Club, Y. W. C. A. Portland, Maine *Tede*

ELEANOR McLAUGHLIN CAREY
Portland High School
Commuters' Club. Portland, Maine



MARGARET G. CALLAN
South Portland High School
Glee Club, Commuters' Club. South Portland, Maine *Greta*

OLIVE KATHERINE CLARK
Berwick High School
Y. W. C. A., York County Club, GREEN AND WHITE, Civic Committee. Berwick, Maine *Clarkie*



MADELINE ESTELLE DOTEN
Deering High School
Commuters' Club, Civic Committee, Dramatic Club. Portland, Maine *Maddy*

ISABEL H. DOUGHTY
South Portland High School
Commuters' Club. South Portland, Maine



BARBARA DUNTON
Boothbay Harbor High School
Lincoln County Club, Outdoor Club, Commuters' Club. Woodfords, Maine *Rusty*

LOUISE ELIZABETH DUNTON
Deering High School
Commuters' Club, Library Club, Lincoln County Club. Westbrook, Maine *Jack*



EDITH M. GIOVINO
Melrose High School
Commuters' Club, Outdoor Club, GREEN AND WHITE. Westbrook, Maine *Edie*

EMMA L. GIOVINO
Melrose High School
Commuters' Club, Outdoor Club. Westbrook, Maine *Emy*



ROBERTA LOUISE HOOPER
St. Croix High School
Y. W. C. A., Glee Club, Dramatic Club. Woodland, Maine *Posy*

MARGARET HUSE
Morse High School
Y. W. C. A. Bath, Maine *Peg*



DOROTHY KNIGHT
Unity High School
Outdoor Club, Y. W. C. A., Campfire, Glee Club. Unity, Maine *Dot*

NELLIE VERNIA LEEMAN
Morse High School
Glee Club, Orchestra, Campfire, Outdoor Club, Y. W. C. A., Advisory Board. Bath, Maine *Nell*



F. ALMA LOWELL
Westbrook High School
Orchestra, Commuters' Club, Outdoor Club. Westbrook, Maine

PAULINE LILLIAN McGRAW
Patten Academy
Y. W. C. A., Outdoor Club. Patten, Maine *Pop*



MARGARET ELIZABETH PERKINS
Cony High School
Y. W. C. A., Dramatic Club, House Committee, Poetry Club, Glee Club, Outdoor Club. Augusta, Maine *Perk*

RUTH ANN STAPLES
Maine Central Institute
House Committee, Y. W. C. A., Dramatic Club, Outdoor Club. Pittsfield, Maine *Ann*



and GREEN WHITE



EDITH M. GIOVINO
Melrose High School
Commuters' Club, Outdoor Club, GREEN AND WHITE. Westbrook, Maine *Edie*

EMMA L. GIOVINO
Melrose High School
Commuters' Club, Outdoor Club. Westbrook, Maine *Emy*



ROBERTA LOUISE HOOPER
St. Croix High School
Y. W. C. A., Glee Club, Dramatic Club. Woodland, Maine *Posy*

MARGARET HUSE
Morse High School
Y. W. C. A. Bath, Maine *Peg*



DOROTHY KNIGHT
Unity High School
Outdoor Club, Y. W. C. A., Campfire, Glee Club. Unity, Maine *Dot*

NELLIE VERNIA LEEMAN
Morse High School
Glee Club, Orchestra, Campfire, Outdoor Club, Y. W. C. A., Advisory Board. Bath, Maine *Nell*



F. ALMA LOWELL
Westbrook High School
Orchestra, Commuters' Club, Outdoor Club. Westbrook, Maine

PAULINE LILLIAN McGRAW
Patten Academy
Y. W. C. A., Outdoor Club. Patten, Maine *Pop*



MARGARET ELIZABETH PERKINS
Cony High School
Y. W. C. A., Dramatic Club, House Committee, Poetry Club, Glee Club, Outdoor Club. Augusta, Maine *Perk*

RUTH ANN STAPLES
Maine Central Institute
House Committee, Y. W. C. A., Dramatic Club, Outdoor Club. Pittsfield, Maine *Ann*



and GREEN WHITE



VERNA MAE STAPLES
Eliot High School
Orchestra, Y. W. C. A., Outdoor Club, Volleyball, Eliot, Maine

MARY ELIZABETH TIBBETTS *Tibby*
Portland High School
Civic Committee, Art Club, GREEN AND WHITE, Basketball, Outdoor Club, Portland, Maine



MILDRED MAE TOMPKINS *Milly*
Gorham High School
Glee Club, Scarboro, Maine

MARTHA GOODWIN
Waterboro High School
Y. W. C. A., Outdoor Club, North Waterboro, Maine



A TEACHER'S PRAYER

Make me a better teacher, Lord, today
Than I was yesterday and days before.
Help me to see, O Lord, that more and more
I reach toward perfection in Thy way,
And not mine own. And granting that I may
A little richer be in teacher-lore;
Give me, I pray, O Lord, from Thy great store
Some spark of fire divine in what I say.

All this I ask, not for myself alone,
Nor for aggrandizement in eyes of men;
But for the sake of those, my youthful class,
Whose destiny to only Thee is known.

Let me not be content tomorrow then,
Unless I shall today's results surpass.

Louis Burton Woodward.

and GREEN WHITE

MID-SENIORS

OFFICERS

President, NORMAN PLAISTED *Vice-President*, DWIGHT WEBB
Secretary, JOHN MASSEY *Treasurer*, PEARL HUSTON

For two years we have studied and enjoyed ourselves in the friendly atmosphere of Gorham Normal School. We have made many friends and meanwhile have been preparing a firm foundation for our life work under the splendid guidance of our instructors. During this time we have done our best to work with them as coöperative teachers should. We have tried to show in our two years here the spirit we intend to display when we enter into the army of teachers.

There remains for us one more year at Gorham Normal in which to complete our training before we face the problem of utilizing our education in the best possible way. In the true sense of the word our education will not be completed when we are graduated from Normal School, for during our stay here we are not only being taught how to pass knowledge on to the pupils, but we are also learning how important it is for us to increase our supply of knowledge by realizing that we know only a part of what there is to be learned, and by displaying a willingness to constantly add to our store of facts. For, as Franklin once said, "Being ignorant is not so much a shame as being unwilling to learn."

Although some of our group may follow entirely different lines of work after their graduation, the training and experience which we are obtaining here will certainly be useful in any profession.

and GREEN WHITE

MID-SENIORS, JUNIOR HIGH



EARLE DELMONT ACHORN *Doc*
Rockport High School Rockport, Maine
Glee Club, Orchestra, Civic Committee, GREEN AND WHITE,
Library Club.

RAYMOND J. BOWMAN *Ray*
Cheverus High School Portland, Maine
Library Club, Commuters' Club.



MARIE E. CLARK *Clarky*
Dalton High School Dalton, Massachusetts
Orchestra, Massachusetts Club, Outdoor Club, Y. W. C. A.

PATRICIA EVELYN ELWELL *Pat*
Portland High School Peaks Island, Maine
Campfire, Library Club, Outdoor Club, Y. W. C. A., Art Club,
Oracle Advisory Board, Basketball, Baseball, Volleyball, Hockey.



ANNIE HAMLIN GARDNER *Anne*
Portland High School Waterford, Maine
Y. W. C. A., Oxford County Club, Art Club, Library Club, Out-
door Club.

HAZEL RUTH GILPATRICK *Gilly*
Milo High School Milo, Maine
Glee Club, National Honor Society, GREEN AND WHITE, Civic
Committee, Basketball, Campfire, House Committee, Outdoor
Club.



FAITH GRAVES *Faithie*
Gorham High School Gorham, Maine
Glee Club, Commuters' Club, GREEN AND WHITE.

RONALD HALLETT *Ronnie*
Oakland High School Oakland, Maine
Orchestra, Glee Club, Library Club, Y. M. C. A., Lambda Pi
Sigma, Civic Committee, Dramatic Club, Oracle.



WARREN HERBERT
Westbrook High School Westbrook, Maine
Commuters' Club, Lambda Pi Sigma.

BARBARA FRANCES HOWARD *Barby*
Stephens High School Rumford, Maine
Oxford County Club, National Honor Society, Civic Committee,
Art Club, House Committee, Poetry Club, Outdoor Club, Oracle
Staff, GREEN AND WHITE.



FRANCES ELIZABETH HUSE *Franie*
Gorham High School Gorham, Maine
Glee Club, Commuters' Club, Dramatic Club, Y. W. C. A., Poetry
Club.



PEARLE ETHELDA HUSTON *Gem*
Portland High School Portland, Maine
Commuters' Club, Art Club, GREEN AND WHITE, Poetry Club.



ELLA F. JOHNSON
Melrose High School Melrose, Massachusetts
GREEN AND WHITE, Oracle, Dramatic Club, Massachusetts Club,
Outdoor Club, Civic Committee, Y. W. C. A.



KEITH JORDAN *Crappy*
Portland High School Gorham, Maine
Civic Committee, Commuters' Club, Lambda Pi Sigma, Baseball,
Track.



CLYDE P. KIMBALL
Sanford High School Springvale, Maine
Basketball, Baseball, Lambda Pi Sigma, York County Club.



RAYMOND G. KING *Bud*
Lisbon Falls High School Lisbon Falls, Maine
Baseball, "G" Club.



HENRIETTA ELAINE LIDBACK *Henri*
Gorham High School Gorham, Maine
Glee Club, Outdoor Club, Commuters' Club, Art Club, Y. W.
C. A., Campfire, Basketball.



MARGARET J. LORING *Peggy*
Pennell Institute Gray, Maine
Y. W. C. A., Library Club, Civic Committee, Outdoor Club,
Campfire.



ARLENE MARSHALL *Markie*
George Stevens Academy Bluehill, Maine
Y. W. C. A., Washington-Hancock County Club, Outdoor Club.

LESLIE P. MARSTON *Susie-Red*
Lincoln Academy Westbrook, Maine
Art Club, Basketball, Cross Country, Lambda Pi Sigma.



and GREEN WHITE



DAVID McALLISTER
Gorham High School
Lambda Pi Sigma, GREEN AND WHITE. Gorham, Maine

RAYMOND ELLSWORTH MORTON *Ray*
South Portland High School South Portland, Maine
Cross Country, Basketball, Baseball, Track, Oracle, Lambda Pi Sigma.



ARTHUR NORGAARD *Art*
Windham High School Windham, Maine
Commuters' Club, Library Club, Alpha Lambda Beta.

WALTER A. O'BRIEN *Obie*
Portland High School Portland, Maine
Lambda Pi Sigma, Commuters' Club.



DOROTHY PACKARD *Dot*
Canton High School Canton, Maine
Oxford County Club, Editor GREEN AND WHITE, Art Club, Outdoor Club.

JAMES PILLSBURY *Jimmy*
Gorham High School Gorham, Maine
Alpha Lambda Beta, Commuters' Club.



MYRTLE PRATT *Mert*
Stephens High School Upton, Maine
Y. W. C. A., Outdoor Club, Civic Committee, Poetry Club, Oxford County Club, Recreation Council.

FRANCES LUCILLE REMILLARD *Fran*
Attleboro High School Attleboro, Massachusetts
Hockey, Tennis, Archery, Massachusetts Club, Poetry Club.



KATHERINE RICKER
Berwick High School Berwick, Maine
Y. W. C. A.

CARROL B. RONCO *Pete*
Central High School North New Portland, Maine
Y. M. C. A., Lambda Pi Sigma, Glee Club, GREEN AND WHITE, Basketball, Cross Country, Library Club.



JOHN M. ROSSNAGEL *Baron*
Mattanawcook Academy Portland, Maine
Library Club.

ELIZABETH SMITH *Betty*
Maine Central Institute Exeter, Maine
Y. W. C. A., Outdoor Club, Campfire, Poetry Club, GREEN AND WHITE.



WARRENA SMITH
St. Joseph's Academy Portland, Maine
Outdoor Club.

CAROLYN EILEEN TOLLEFSON *Tolly*
South Portland High School Gorham, Maine
Glee Club, Outdoor Club, GREEN AND WHITE, Poetry Club, Commuters' Club.



FRANK TUPPER *Tup*
Portland High School Portland, Maine
Library Club.

LOWENA WARDWELL *Lou*
Deering High School, Westbrook Junior College Woodfords, Maine
Commuters' Club, Entertainment Committee, Dramatic Club, Tennis.



BERTHA HELENA WARREN *Bert*
St. Joseph's Academy Portland, Maine
House Committee, Outdoor Club, Poetry Club, Y. W. C. A.

CARLTON L. WATTS *Kilowatts*
Traip Academy, Mount Hermon School Kittery, Maine
Alpha Lambda Beta, Dramatic Club, Library Club, Poetry Club, Glee Club.



DWIGHT WEBB *Buster*
Gorham High School Gorham, Maine
Alpha Lambda Beta, Basketball, Baseball.

FRANCIS L. WHITE *Whitie*
Skowhegan High School Skowhegan, Maine
Lambda Pi Sigma.



and GREEN WHITE

MID-SENIORS, INDUSTRIAL ARTS



LAWRENCE EDWIN BARTLETT *Barty*
Gould Academy Bethel, Maine
Y. M. C. A., Oxford County Club, Basketball, Cross Country,
Alpha Lambda Beta, Volleyball, Track.



MONROE P. BEAN *Beanie*
Livermore Falls High School Livermore Falls, Maine
Y. M. C. A., Civic Committee, Cross Country, Tennis, Alpha
Lambda Beta, Basketball, Glee Club.

PAUL S. CHAPMAN *Red*
Gould Academy Bethel, Maine
Y. M. C. A., Basketball, Cross Country, Lambda Pi Sigma,
Tennis, Glee Club, Volleyball, Track.



KERMIT D. W. GROVER *Curly*
Sanford High School Springvale, Maine
Alpha Lambda Beta, Y. M. C. A., York County Club, Glee Club,
Cross Country.

WALLACE KEMP HART *Red*
Cony High School Augusta, Maine
Lambda Pi Sigma, Y. M. C. A., Dramatic Club, GREEN AND
WHITE.



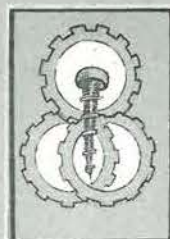
ELLERY HUFF *Huffie*
Norridgewock High School Norridgewock, Maine
Cross Country, Basketball, Baseball, Alpha Lambda Beta, Y. M.
C. A., Volleyball.

JOHN S. MASSEY *Jack*
Springfield High School Springfield, Vermont
Cross Country, Basketball, Volleyball, Tennis, Baseball, Alpha
Lambda Beta, Glee Club, Y. M. C. A., Entertainment Committee,
GREEN AND WHITE, Track.



NORMAN A. PLAISTED *Norm*
Jay High School North Jay, Maine
Cross Country, Basketball, Volleyball, Tennis, Baseball, Lambda
Pi Sigma, Y. M. C. A., Glee Club, Track, GREEN AND WHITE,
"G" Club.

FORREST H. WARDWELL *Fod*
Castine High School Castine, Maine
Basketball, Volleyball, Tennis, Baseball, Lambda Pi Sigma,
Y. M. C. A.



Juniors





GREEN and WHITE

JUNIORS

OFFICERS

President, JOHN HAM Vice-President, NORMAN PROVENCAL
Secretary, REITA McDONALD Treasurer, SAMUEL BARBER

When we Juniors came to Normal Hill, some of us came interested in the teaching profession as an escape from what sometimes seemed to us an overindustrialized world. Here under friendly guidance we have reached a new realization of what industry may mean. We have come to regard teaching as industry of the highest type, the craftsmanship of the master builder whose materials are the accumulated knowledge of the world, the plastic minds of children and whose tools are patience, faith, and skill.

*"Let us, then, be up and doing,
With a heart for any fate;
Still achieving, still pursuing,
Learn to labor and to wait."*

and GREEN WHITE

C1 DIVISION



Back row: A. Canny, M. Blake, E. Campbell, M. Berube, E. Carswell, C. Cotteral, A. Cushing, M. Dynan.
Middle row: E. Dolloff, S. Cohen, E. Clemons, F. Anderson, E. Chipman, E. Chapman, M. Benner, H. Barrett, B. Bridges, M. Cole.
Front row: M. Clemons, R. Bailey, M. Austin, M. Daggett, R. Coley, M. Dalzell.

and GREEN WHITE

C2 DIVISION



Back row: G. Kane, L. Dow, W. Flint, A. Gatti, G. Elwell, M. Honan, G. Flint.
Middle row: L. Hamblen, A. Kennedy, M. Douglas, B. Edgerly, V. Hobson, J. Jordan, B. Hutchins, A. Campbell, D. Hunt, M. Gordon, H. Gale.
Front row: H. Flye, M. Keene, B. Fisher, G. Fenalson, J. Galligan, E. Haglund.

and GREEN WHITE

C3 DIVISION



Back row: M. McKenny, C. Landry, E. McLain, C. Larson, V. Merrill.
Middle row: A. Meserve, R. MacDonald, E. Martin, R. Miller, M. Mersereau, M. MacDonald.
Front row: V. Maines, F. McIntyre, D. Lincoln, L. Metcalf, M. Lovejoy.

and GREEN WHITE

C4 DIVISION



Back row: A. Putnam, G. Perry, H. Roberts, M. Morgan, D. Nichols, M. Stevens.
Middle row: Hilma Smith, E. Moulton, B. Neilson, E. Parker, R. Mills, E. Solloway.
Front row: J. Morrison, V. Simpson, Helene Smith, A. Pohle, C. Palmer, A. Millett.

and GREEN WHITE

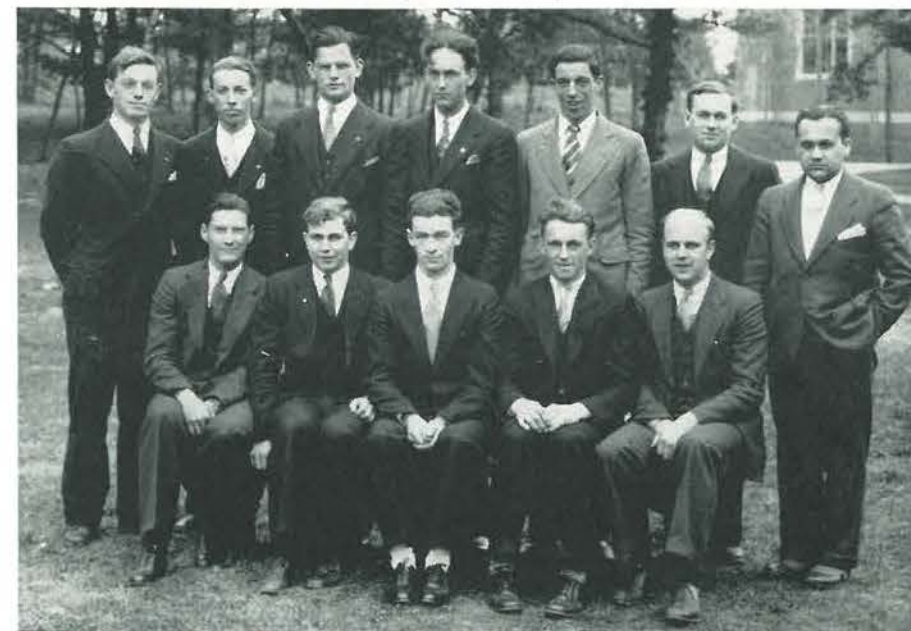
C5 DIVISION



Back row: A. Walker, F. Tibbetts, S. Sylvester, I. Tubbs, H. Stone, E. Stiles, M. Whitman, A. Comeau.
Middle row: J. Rand, L. Furbush, R. Dustin, L. Ross, M. Rowe, E. Bachelder, J. Ham, F. Thompson.
Front row: M. Stockbridge, E. Wise, M. Young, A. Tuck, K. True, K. Weeks.

and GREEN WHITE

INDUSTRIAL ARTS DIVISION



Back row: A. Kilborn, W. Hayes, H. Burr, J. Parsons, R. Tracy, T. Bailey, N. Provencal.
Front row: R. Gray, L. Sands, R. Edwards, R. Willis, S. Barber.



SOME TRAINING SCHOOL PROJECTS

THE ART PROJECT

Two large, beautifully framed pictures in colors were hung in rooms two and four as a result of the art project, which Miss Wihry directed this spring. The art classes of the whole school coöperated in putting on this program of living pictures, music and readings.

For three days preceding the program an exhibition of one hundred fifty colored prints, all reproductions of well-known paintings, were hung in different rooms of the school. This exhibition, furnished by the Colonial Art Company, was admired by over four hundred pupils and visitors.

All the art classes were conducted through the rooms by Miss Wihry, who explained the pictures to the boys and girls. The pictures, which were nearly all reproductions of the work of modern painters of note, made the topic for study and discussion in the art classes for several weeks before the exhibition was hung. The training school faculty and members of the normal school art classes assisted Miss Wihry.

"LEGEND OF SLEEPY HOLLOW"

A cantata with dramatizations adapted from Irving's "Legend of Sleepy Hollow" was presented at Russell Hall in February. An annual project of this kind intended to foster the coöperation of all departments in the training school is sponsored and directed by Miss Andrews.

The dramatization, costuming, dancing, artistic effects, and music offered opportunities for general participation on the part of the pupils, student teachers, critic teachers, and supervisors.

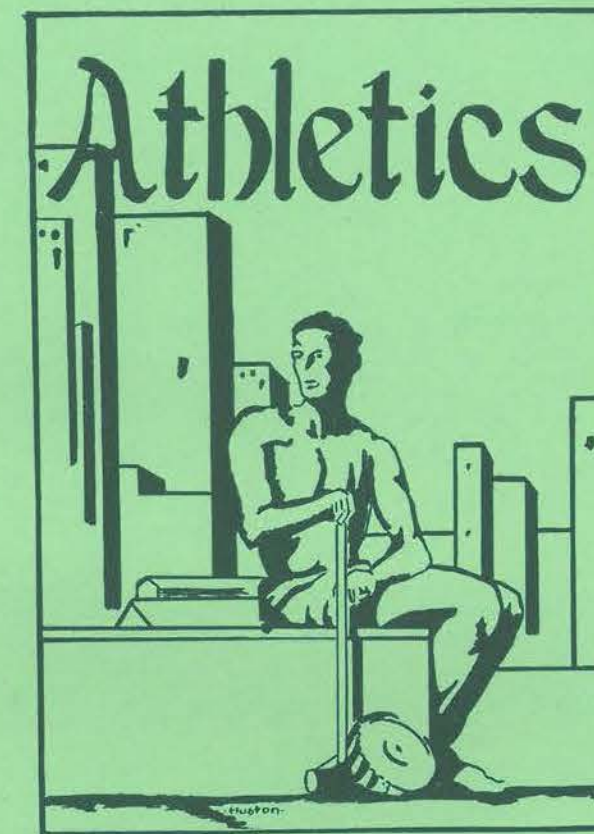
Besides the chorus, composed of the fifth, sixth, seventh, eighth, and ninth grades, the junior high school orchestra played, Joan McAllister sang solos, and Joan McAllister, Lorraine Landry, and Margaret Young played an instrumental trio.

PROMOTION DAY

This year the promotion program is being worked out as a dramatization of various kinds of school work. All parts will be taken by members of Junior III (Grade 9) except for the music. Songs to illustrate tableaux of athletic activities will be sung by the junior high chorus, which will also sing the new official Maine song, accompanied by the school orchestra. Miss Andrews is writing the orchestration for this music.

Barbara Hill is the class president, Sidney Goodrich is the school principal, and the parts of the other teachers and pupils are all taken by members of the class.

The program begins with a faculty meeting held in the principal's office, and includes a speech of welcome, visits to several different classes, a farewell talk, a class will, and a class prophecy which is pulled out of a caldron by the three weird sisters, Joan McAllister, Maria Armentino, and Rita Ferron.



and GREEN WHITE



Back row: Mr. Packard, R. Willis, J. Massey, L. Marston, E. Huff, T. Bailey, R. Edwards, H. Burr, L. Bartlett.
Front row: R. Bowman, M. Bean, R. Morton, K. Grover, N. Plaisted.

1933 CROSS COUNTRY

SUMMARY

Dual Meet at Brunswick, October 14—Gorham Normal, 35; Bowdoin Jayvees, 20.
Dual Meet at Gorham, October 18—Gorham Normal, 36; Bridgton Academy, 20.
Dual Meet at Gorham, October 20—Gorham Normal, 36; Deering High, 20.
Dual Meet at Gorham, October 24—Gorham Normal, 28; C. Y. C. L., 27.
Dual Meet at Bridgton, November 8—Gorham Normal, 31; Bridgton Academy, 24.

JUNIOR VARSITY

Dual Meet at Gorham, October 18—Gorham Normal, 46; Greely Institute, 16.

The first meet of the year saw the Gorham team invading Brunswick to battle the strong Bowdoin Junior Varsity team. The first place fell to Gorham through the untiring efforts of Ray Morton. The next five men to cross the tape were Bowdoin men and Gorham dropped the meet 35 to 20.

The second meet saw Bridgton Academy at Gorham. In this run Morton again took first place but the next five places fell to Bridgton. The final tally showed a victory for the visitors, 20 to 36.

The following Wednesday saw Gorham meeting the strong Deering outfit on the home course. This proved to be a repetition of the preceding meet, Deering winning by a score of 20 to 36.

The last meet at Gorham with the cream of the York County League teams proved to be the best run of the year. Ray Morton repeated and with Grover, Tarbox, Willis and Bean not far in arrears, Gorham finished with a score of 28. But again fate stepped in and the final score read 27 to 28 in favor of York County League.

The final run of the season found Gorham travelling to Bridgton in a snow-storm. Gorham lost in a hard battle, 31 to 24.

and GREEN WHITE



Back row: A. Comeau, N. Provencal, J. Massey, J. Rand, W. Hayes, R. Willis, A. Kilborn, S. Barber, F. White.
Middle row: Mr. Wieden, P. Chapman, M. Bean, P. Gannon, R. Morton, C. Rines, D. Wight, R. Edwards, E. Libby.
Front row: N. Plaisted, F. Wardwell, L. Marston, L. Jensen, J. Ham, D. Webb, D. Snow.
Inserts: H. West, E. Bachelder.

BASKETBALL, 1934

SUMMARY

G. N. S.	Opp.	G. N. S.	Opp.
51 Alumni	22	*21 Westbrook High	28
28 Bridgton Academy	44	34 R. I. College of Education ..	25
40 Portland University	11	30 Keene Normal	37
33 Cheverus	25	*28 Salem Teachers' College	41
29 Westbrook High	30	*33 Keene Normal	35
36 Salem Teachers' College	50	*26 Cheverus	19

* Games away.

The first scheduled game of the season found Bridgton Academy at Gorham, the visitors winning, 44 to 28. The following week the home team met and defeated the Portland University outfit, 40 to 11.

Following the Christmas recess, the home team met Cheverus for the first of a two-game series. In the first game Gorham defeated their old rivals by a score of 33 to 25, and in the return game, which marked the close of Gorham's season, the home team again won, 26 to 19.

In the week between the two Westbrook games, Gorham played Salem Teachers' College. The visitors proved too strong for the home team and Salem won, 50 to 29. In a later game Gorham defeated the R. I. College of Education, 34 to 25.

A three-day trip to Salem and Keene Normal was a fitting climax to the season's schedule. The first day featured a drive by bus to Salem and a return game with the Salem Teachers' College. Salem won, 41 to 28. The next day saw the Green and White team journeying to Keene Normal. This game was the most closely contested battle of the season, Keene winning by a smaller margin, 35 to 33.

and GREEN WHITE



Top row: Mr. Wieden, M. Moulton, F. Wardwell, G. Smith.
Middle row: R. Smith, L. Curtis, K. Crockett, R. Clifford, R. Corey, R. Morton, D. Webb, R. Walker.
Bottom row: L. Provencal, D. Gallison, W. Ranson, A. Tarbox, A. McSorley, C. Kimball.

BASEBALL, 1933

SUMMARY

*Gorham Normal	9	South Portland High	11
*Gorham Normal	6	St. Louis School	9
*Gorham Normal	4	Castine Normal	14
Gorham Normal	7	Deering High	10
Gorham Normal	4	Fryeburg Academy	3
Gorham Normal	11	St. Louis School	3
Gorham Normal	10	South Portland High	1
*Gorham Normal	4	Fryeburg Academy	6

* Games away.

Gorham opened the season against South Portland. Due to the inability of the Gorham players to hit in the pinches, South Portland won the game in the last inning, 11 to 9. But in a return game at Gorham, a revamped Green and White team swamped the Capers, 10 to 1, in a hard-hitting game.

In the first game with the St. Louis School at Biddeford, Gorham played good ball but lost out in the late innings of the game, St. Louis winning, 9 to 6. In the second game with St. Louis, the home team reversed the tables to win by a big margin, 11 to 3.

On the following Saturday, Gorham travelled to Castine to play the strong Castine Normal team. This was the longest and best trip of the season. Castine won 14 to 4 in a fast, well-played game.

Still smarting from their recent defeat, the varsity prepared for the first game with Fryeburg. This turned out to be a pitchers' battle between two brothers, both teams giving their pitchers fine support. Timely hitting carried the day for Gorham and the home team won, 4 to 3. In the return game at Fryeburg, Gorham played well but was unable to repeat and Fryeburg won the game, 6 to 4.

and GREEN WHITE



ATHLETIC ASSOCIATION OFFICERS

E. Gates—President

D. Hunt—Vice-President
G. Flint—Treasurer

Councillors—
M. Boyce, B. Cook
E. Moulton

E. Delaney—Secretary

GIRLS' ATHLETICS

A "fresh start" has been the characteristic slogan for this year's athletic activities. Miss Dorothy Flint, our new physical director and coach, came to us with many new and helpful suggestions, many of which have been successful carried out. The original idea of appointing students to supervise and direct each sport has stimulated interest and provided an opportunity for these girls to have training in leadership. These student councillors have arranged practices, provided for games and planned closing banquets for each of the sports. For this year, 1933-1934, the sport councillors were as follows: Hockey, Ella Johnson; Archery, Helen Stone; Tennis, Hazel Gilpatrick; Basketball, Beatrice Cook; Volley Ball, Beverly Soper; and Baseball, Evelyn Moulton. For the coming year, 1933-1934, the following girls will fill these positions: Archery, Katherine True; Volley Ball, Sonia Cohen; and Basketball, Ethel Chapman. With the coöperation of the officers of the Athletic Association and the student councillors, Miss Flint has reorganized the point system through which rewards are made to the individuals and to the class receiving the most points.

and GREEN WHITE



BASKETBALL
FIELD HOCKEY

VOLLEY BALL
BASEBALL

FALL SPORTS

Early in the fall, field hockey practice began with a turn-out of many enthusiastic Juniors and Seniors who were all prepared to show Miss Flint what Gorham Normal had in store for her. Among last year's veterans who came out to learn and help were: Marguerite Boyce, Sebina Regina, Burnette Bailey, Beatrice Cook, Mary Sturgis, and Patricia Elwell. Among the Juniors who came out to show what they could do were: Evelyn Moulton, Bernice Nielsen, and Glennis Flint. Practises were conducted throughout September and October, but cold weather came too early for us to play off the Senior-Junior game.

Along with hockey, when the weather would permit, the feminine Robin Hoods of the school gathered on the athletic field to try their skill at hitting the Bull's Eye. Archery proved to be an interesting sport to recruits and veterans alike. It was supported throughout the season by many followers. After much practice for skill, two contests were held, one for the beginners and one for the advanced. Virginia Maines received the highest score in the beginners' contest and Frances Remillard in the advanced class.

Also this fall, tennis instruction was provided for those ambitious to know more about the game. These classes were conducted during spare periods or at noontimes. Those girls who did not take advantage of these classes played just the same. Toward the end of the season two ladder tournaments were conducted. Elinor Dolloff, a Junior, was the victor of the beginners' tournament, while Lowena Wardwell once again walked away with the advanced honors for the Mid-Seniors.

and GREEN WHITE

WINTER SPORTS

During the winter months an entirely new program was carried out in basketball. As the first candidates signed up, their names were arranged on color teams. These teams practiced together until they were finally in trim to play off their games. In this play-off the yellow team, with Evelyn Moulton, Bertha Bridges, Glennis Flint and Ethel Chapman as its nucleus, was victorious. From these teams, players were picked to represent their class on the respective class teams. More games were played and again the Juniors were victorious. The Seniors and Advanced Seniors avoided any hard feelings by tying for second place. The basketball season closed with a banquet in the dining-room for all those girls participating in either class or color team games.

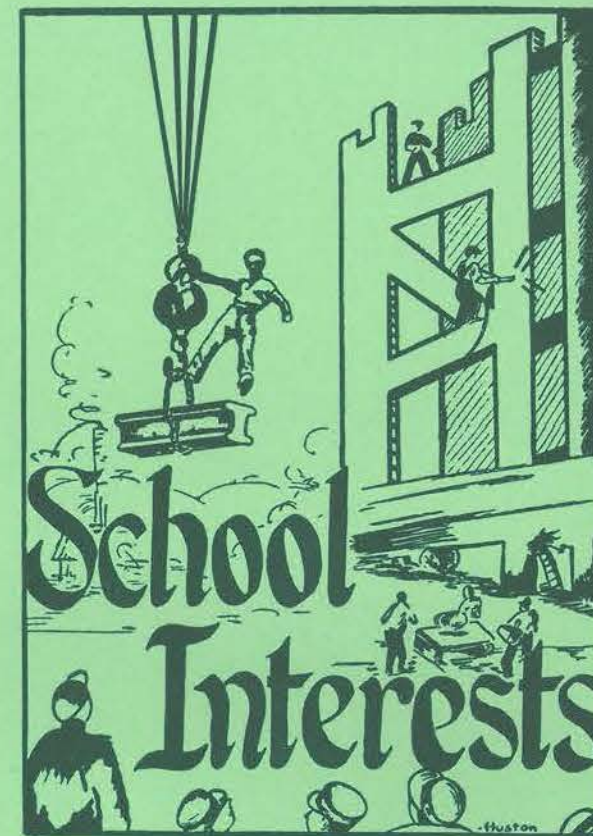
No sooner had the basketball season closed than the girls turned out for volley ball practice. Under the able supervision of Miss Beverly Soper, the Juniors organized themselves into teams and played games. The defeat of the upper classes in basketball evidently disheartened them for their attendance at volley ball meetings was very small. At the end of the season, an honorary Junior team was chosen and a banquet was held for all those participating in any of the practises. At this banquet Sonia Cohen was elected student councillor for the coming year.

SPRING SPORTS

Once again, on Monday and Wednesday afternoons, girls swarm to the field to try their skill at the use of the bow and arrow. In spite of March winds and April showers, much practice has already been provided and more is being planned for. Another set of tournaments will be held near the close of the season. Last fall's winners will have much more competition this time.

The tennis courts are popular again! More girls are learning the game, those who were beginners are becoming advanced and those who were advanced are learning still more. More classes and another tournament are in store for all those interested.

Archery and tennis take up a lot of time, yet the girls find enough left over to show up for baseball, too. Playing with an indoor ball and no gloves, they derive a lot of enjoyment from the game. The Juniors show a lot of talent and are confident they'll take over last year's victorious team. The Seniors are just as confident that they can go back to the old standard—"The Seniors always win." What the outcome will be, only time can tell!





A REPORT FROM THE STUDENT DELEGATES TO THE EASTERN-STATES ASSOCIATION OF PROFESSIONAL SCHOOLS FOR TEACHERS

The first meeting of the conference was the delegate meeting held in the small ballroom of the Hotel Pennsylvania. We were very fortunate in having Doctor Suhrie preside and help in the organization of the conference.

Throughout the conference a new philosophy of education seemed to show itself. It may well be summed up in a statement from a professor who said, "I am your teacher on an occasion. You are my pupil on an occasion. We work together on all occasions." To me that was made manifest throughout this conference—students and faculty working together, each respecting the other's opinion.

On the next day our delegation separated and attended four different meetings in order that we might receive a greater benefit for the school. The following topics were discussed at the various meetings:

1. How, without departing from our teacher-training programs, can students get the maximum preparation for a good life in a community apart from their professional work?
2. What means can be employed for securing closer and more coöperative faculty-student relationships?
3. What should prospective teachers now be doing in order that they may be best adapted to contribute toward a solution of our social and economic problems?
4. What should be the relationship and attitude of individual students toward the official staff of the Student Council?
5. For what reasons, if any, should students in preparation be eliminated from the possibility of becoming public school teachers?
6. How can a normal school or teacher's college which trains elementary teachers justify itself in a constituency already oversupplied with teachers?

Perhaps the most helpful of the meetings was the last held in the grand ballroom Saturday directly after discussions. At this meeting Dr. Frank Kingdon, author and lecturer on educational and social problems in East Orange, New Jersey, gave a most inspiring address entitled, "The Challenge of the Era to the Teacher." He urged that as we go through this period of reconstruction we should keep our mind clear, with certain confidence, perspective, and control over our own intelligence; and as far as possible keep the minds of the students and community balanced.

Eunice Reed.

It was my privilege to be one of the student delegates to attend the Eastern States Conference which was held in New York last April. My experiences gained on this trip as an active participator in the meetings, and as an interested sight-seer, will always be well remembered.

To be able to come in contact with such eminent educators as Dr. Ambrose Suhrie, Alonzo Meyers and Dr. Frank Kingdon and to listen to their views was indeed an inspiration of a lifetime.

The most interesting part of the three-day program was that devoted to the discussion of the youth movement in other countries. Exchange students representing Italy, Germany, and Russia, who could truly speak from experience, told of this undertaking in their respective countries. In the review of this youth situation, we learned that in most European countries all youth movements were political and under dictatorship. This dictatorship minimizes the individual and individualism is not promoted.

In America we inspire youth to learn by experience. We appeal to reason and not to emotion. The aim in education is to prepare the coming generation for positions of trust in life.

Keith Jordan.

and GREEN WHITE



Standing: O. Clark, M. Brown, W. Hart, E. Giovino, J. Massey, H. Gilpatrick, C. Ronco, A. Renell, Mr. Wieden, C. Tollefson, E. Johnson, N. Plaisted, M. Tibbetts.
Seated: D. McAllister, B. Howard, E. Achorn, Miss Lewis, D. Packard, E. Smith, P. Huston, Miss Wihry, F. Graves.

GREEN AND WHITE EDITORIAL BOARD

Editor-in-Chief, DOROTHY PACKARD

Assistant Editors

MARY TIBBETTS MINNIE BROWN

Business Manager, EARLE ACHORN

Assistant Business Managers

HAZEL GILPATRICK EDITH GIOVINO JOHN MASSEY

Literary Editors

BARBARA HOWARD ELIZABETH SMITH
CARROL RONCO CAROLYN TOLLEFSON

Photographic Editors

OLIVE CLARK WALLACE HART

Calendar, ALTHA RENELL

Athletic Editors

ELLA JOHNSON NORMAN PLAISTED

Alumni Editors

FAITH GRAVES DAVID McALLISTER

Art Editor, PEARL HUSTON

Faculty Advisors

MISS LEWIS MR. WIEDEN MISS WIHRY

and GREEN WHITE

DIRECTORY OF ORGANIZATIONS AND THEIR OFFICERS

CIVIC COMMITTEE

President Keith Jordan
Vice-president Ronald Hallett
Secretary-Treasurer Ernest Libby

HOUSE COMMITTEE

President Beatrice Cook
Vice-president Mildred Turner
Secretary Margaret Huse

DRAMATIC CLUB

President Eunice Reed
Vice-president Beatrice Cook
Secretary Marie Soper
Treasurer Helen Abbott

ART CLUB

President Marie Soper
Vice-president Patricia Elwell
Secretary-Treasurer Patricia Cousins

POETRY CLUB

President Stella Nichols
Vice-president Rebecca Miller
Secretary Winifred Thornton
Treasurer Sonia Cohen

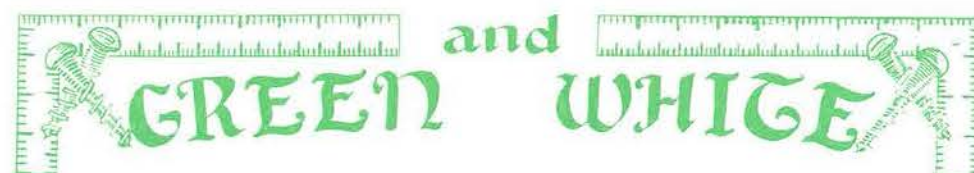
LIBRARY CLUB

President Carrol Ronco
Vice-president Doris Hunt
Secretary-Treasurer Francis Thompson

ORACLE

Editor-in-Chief Philip Gannon
First Assistant Helen Abbott
Second Assistant Keith Selwood
Business Manager Daniel Wight

Assistant Editors {
Frances Huse
Mildred Turner
Anne Rubinsky
Marguerite Boyce
Frances Smith



GIRLS' GLEE CLUB

President Avis Hinds
Secretary Stella Nichols
Treasurer Doris Lincoln

BOYS' GLEE CLUB

President John Massey
Secretary Keith Selwood

YOUNG WOMEN'S CHRISTIAN ASSOCIATION

President Eunice Reed
Vice-president Olive Clark
Secretary Norma Williston
Treasurer Marion Parkman

YOUNG MEN'S CHRISTIAN ASSOCIATION

President Monroe Bean
Vice-president Wallace Hart
Secretary-Treasurer John Massey
Chaplain Norman Plaisted

ATHLETIC COUNCIL

President Marguerite Boyce
Vice-president David Gallison
Secretary Miss Dorothy Flint
Treasurer Mr. Everett Packard

YOUNG WOMEN'S ATHLETIC ASSOCIATION

President Ellen Gates
Vice-president Doris Hunt
Secretary Edna Delaney
Treasurer Glennis Flint

YOUNG MEN'S ATHLETIC ASSOCIATION

President Paul Boothby
Vice-president John Massey
Secretary John Ham
Treasurer Arden Tarbox

OUTDOOR CLUB

President Arlene MacMillan
Vice-president Elizabeth Campbell
Secretary Reita MacDonald
Treasurer Elizabeth Smith

"G" CLUB

President David Gallison
Vice-president Raymond King
Secretary Norman Plaisted
Treasurer Louis Jensen



ALPHA LAMBDA BETA FRATERNITY

President Mervin Shain
Vice-president John Massey
Secretary Carlton Watts
Treasurer Paul Boothby
Chaplain Monroe Bean

LAMBDA PI SIGMA FRATERNITY

President Philip Gannon
Vice-president Keith Jordan
Treasurer Wallace Hart
Secretary Ronald Hallett

JUDGING COMMITTEE (ENTERTAINMENT)

The Dean Miss Jordan
President of House Committee Beatrice Cook
President of Civic Committee Keith Jordan
A faculty member Mr. Packard
A student at large Barbara Fisher

COMMUTERS' CLUB

President Anne Rubinsky
Vice-president Leslie Ross
Secretary Pearl Huston
Treasurer Leander Sands

CAMPFIRE

President Affa Campbell
Secretary Sebina Regina
Treasurer Minnie Brown

PENOBSCOT COUNTY CLUB

President Barbara Gerry
Vice-president Ellen Gates
Secretary-Treasurer Pauline McGraw

YORK COUNTY CLUB

President Bernice Dickerson
Vice-president Marian Earle
Secretary-Treasurer Ethel Chapman

OXFORD COUNTY CLUB

President Myrtle Pratt
Vice-president Mary Colby
Secretary Avis Hinds

MASSACHUSETTS CLUB

President Ella Johnson
Vice-president Jean Galligan
Secretary Ruth Corey
Treasurer Edna Delaney

and GREEN WHITE



CALENDAR

SEPTEMBER

- September 12.* Practice teachers bring back signs of life to the campus.
- September 12.* Sign on the dotted lines, please. What for? Registration, of course.
- September 12.* Do we know each other? Why not after the Y. W. "I Am—You Are" party in Center with eats and everything!
- September 13.* The struggle begins!
- September 13.* The Juniors are duly welcomed into our midst by Eunice Reed and Keith Jordan.
- September 15.* Comeau goes in search of sky-hooks! Did he find them? Ask Dr. Russell!
- September 17.* Homesick? Yes! But not after the Y. W. Friendly Get-Together and Marsh-mallow Roast in Robie Hall Library.
- September 19.* Senior Class Officers are elected. Now we'll have action!
- September 22.* The ice is completely broken at the Junior Reception.
- September 24.* What's that noise? Only someone riding a bicycle in Robie Hall.
- September 26.* Calling Buster Webb! Calling Paul Boothby! Where is Ella Johnson? Voice from East Hall—"Where do you suppose? Out on the tennis courts, as usual!"
- September 27.* Practical joke number one! "Farewell To Arms" is sung to Venus in Robie Hall Library.
- September 29.* East Hall occupants are startled out of their inspiring dreams as a walnut book-end is thrown mysteriously through Marie Soper's transom!
- September 30.* Atmosphere in East Hall—"Who broke that transom?"

and GREEN WHITE



OCTOBER

- October 2.* Dr. Russell is missing in Chapel. He may be found at the Conference for New England Education.
- October 3.* The Juniors prove very entertaining at the Dramatic Club Banquet in East Hall Dining Room.
- October 3.* Robie Hall is full of song. Reason: Sing in Center led by Miss Andrews.
- October 4.* "I hereby resolve to become a missionary in India" because of Miss Picken's interesting talk in Chapel.
- October 7.* The Massachusetts Club starts the season off right by giving the first dance of the year.
- October 10.* The Shakespearean Players present "Merchant of Venice" and "Hamlet" in Russell Hall. Highlights: Obie O'Brien and Warren Hebert play in these worthy dramas!
- October 11.* N. R. A. Parade in Westbrook, which means an afternoon off for the practice teachers.
- October 12.* Dr. Russell speaks at the Lambda Pi Sigma Pledge Banquet in East Hall.
- October 14.* That frat is doing itself proud! "Move to the rhythm of the new Lambda Pi Sigma Band."
- October 14.* Cross country team meets the Bowdoin Juniors at Brunswick. Our cross country team, 20; theirs, 35.
- October 16.* Miss Upton entertains the Y. W. C. A. Cabinet at supper.
- October 18.* Cross country team (36) competes with Bridgton Academy (20). Second Junior Varsity (46) vs. Greely Institute (16).
- October 18.* Peg Perkins wins a pie-eating contest at the Grange supper. What was your record, Peg?
- October 20.* Election of GREEN AND WHITE Board.
- October 20.* Deering cross country team (20) comes to Gorham (36).
- October 24.* Central York League Team (27) vs. Gorham (28).
- October 26.* Place: Lewiston. Event: Teachers' Convention. Comments among practice-teachers: "Aren't we glad they have conventions?"
- October 27.* Same as 26th. Also frat initiation.
- October 30.* GREEN AND WHITE Murder Party! We were all criminals and victims! And don't some people make awful noises???

and GREEN WHITE



NOVEMBER

- November 3.* Gorham cross country returns race at Bridgton.
- November 3.* They really are all right! It's just the Alpha Lambda Beta initiation!
- November 4.* Ghosts! Spooks! Fortune telling! All at the House Committee Halloween Party.
- November 7.* Miss Lewis sings "Onward, Christian Soldiers" to her Industrial Arts Class!
- November 9.* Ernest Libby makes his debut as a soloist at the Advanced Senior History Class Chapel Program.
- November 9.* Gorham Normal entertains the Superintendents.
- November 11.* Mrs. Lincoln entertains us with "Another Language."
- November 12.* Believe It Or Not Column. Bev Soper and Bee Cook tip over the dish cabinet in the dining room and break *all* the dishes!
- November 16.* Second quarter begins. New practice teachers start out with worried, distracted looks!
- November 17.* The Mid-Seniors win another victory over the Advanced Seniors.
- November 20.* What dignity! President of the House Committee tears her skirt crawling into the Reserve Room!
- November 22.* What are you eating? A hot-dog? Oh! that must be the Y. W. Food Sale in Center.
- November 23.* Hidden talent of G. N. S. blazes forth at the Lambda Pi Sigma initiation.
- November 27.* We went around the world this morning in Chapel! Mrs. Lincoln took us!
- November 29.* Home for us!

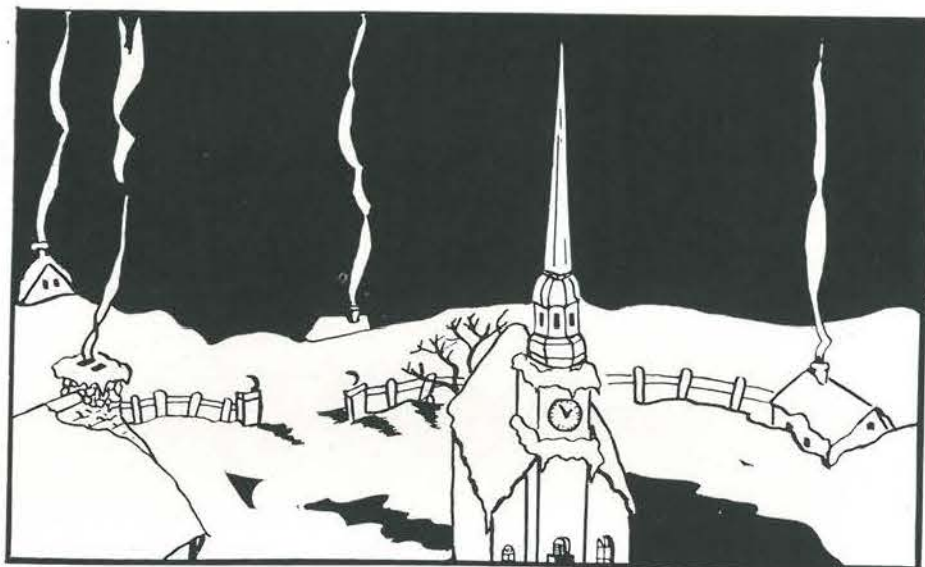
and GREEN WHITE



DECEMBER

- December 4.* How we hate to come back! Did you have a good time?
- December 7.* The Y. W. goes "different" when they present their annual bazaar in the form of a County Fair with all the fixin's!
- December 12.* Have you heard about the "Super—or should that be spelled Soper?—Choir" made up of the members of the B3 Literature Class?
- December 16.* Where is everyone? Look in Portland. All Seniors found at Albert's.
- December 20.* You didn't know what really fine singers we had in Gorham, did you? Neither do we until we go caroling.
- December 21.* What a party the House Committee gives us this year! Chicken supper, a tree, Santa Claus, and program—all in the dining hall.
- December 21.* The end of a perfect evening. We sing carols in front of the fireplace in Robie Hall Library.
- December 22.* The Y. M. C. A. presents a Christmas Program in Chapel.
- December 22.* The Glee Club's special Christmas Program is given fourth period.
- December 22.* Happy days! Vacation at last!
- December 23.* "IT" happens here although we didn't hear of it until January 2!

and GREEN WHITE



JANUARY

- January 2.* A new year and we start it off right by beginning work again on the second day.
- January 2.* Norman Plaisted says, "Cigars might explain 'IT'!"
- January 3.* Minnie Brown compares "Ode to Grecian Urn" to castor oil!
- January 4.* Olive Clark announces her favorite hymn—"Drink To Me Only With Thine Eyes!"
- January 5.* We craved excitement! And we got it at the Gorham-Cheverus game. Who won? We did! 31-25.
- January 6.* The presence of books in Center means a Library Club Dance.
- January 9.* Westbrook High defeats Gorham, 30-29.
- January 10.* Basketball gets a good share of our time. Junior Varsity is defeated by Gorham High, 33-21.
- January 10.* Mr. Silas Perkins of Kennebunkport addresses the Poetry Club.
- January 11.* Eleanor Kane does a "figure-eight" in a bowl of gravy at dinner!
- January 12.* Ardena Miller comes to substitute for Miss Wihry.
- January 12.* Another Outdoor Club Hike.
- January 12.* The Massachusetts Club entertains Salem at a dance and banquet after the game. Score? Salem, 33; Gorham, 27.
- January 13.* The weather man postpones the Massachusetts Club sleigh ride!
- January 16.* Gorham vs. Westbrook at Westbrook. 28-31 in Westbrook's favor.
- January 17.* What's all this talk about soup??? Introduction of three-course dinners to Gorham Normal.
- January 18.* Miss Jencks excuses "Bev" Soper from the Library for the 'steenth time!
- January 19.* The House Committee serve as hostesses to Rhode Island after Gorham's victory, 34-25.
- January 20.* Wilson's Photo Company proves that Darwin was right! If you don't believe it, look at some of the pictures in the office!
- January 20.* The Penobscot County Club takes us to the "Polar Whirl."
- January 22.* Mr. Dooley brings Mary Tibbetts to the GREEN AND WHITE Banquet!
- January 23.* Helen Abbott goes swimming on the K. T. tables.
- January 24.* The House Committee gives us a few pointers on dancing.
- January 26.* General deluge of hectograph ink by Clarice Curtis!
- January 28.* How many people are bruised when Earle Achorn "rolled the stones away?"
- January 31.* "At the Sign of the Pewter Jug" presented by Dramatic Club.

and GREEN WHITE



FEBRUARY

- February 2.* Charlotte Bailey is overcome by coal dust in Miss Lewis' room.
- February 3.* Miss Wood has a new plant.
- February 5.* Wilson McDonald, poet laureate of Canada, reads some of his poems to us.
- February 7.* The Commuters serve a lunch.
- February 8.* McAllister's dog takes two of Miss Lewis' exams!
- February 10.* Miss Wihry returns.
- February 12.* Lo! and behold! The victrola in Center is fixed.
- February 13.* Eleanor Parker sends her heart to Earle Achorn at the Poetry Club party.
- February 14.* Miss Lewis again breaks the trail up to East Hall for breakfast!
- February 16.* Again?? Pearle Huston's car refuses to go places!
- February 17.* Paul Moody walks home from Portland three nights in *one* week!
- February 18.* German Measles appear in East Hall.
- February 21.* What's the matter with the town clock? Ask Danny Snow!
- February 23.* The womanly beauty of Jimmie Pillsbury, Carleton Watts and Jack Massey is at last disclosed to the public at the Alpha Lambda Beta play, "His Uncle's Niece."
- February 26.* Miss Stone organizes the "Salmagundi Club."

and GREEN WHITE



MARCH

- March 1.* The House Committee reviews for us the dormitory life during the past school year.
- March 2.* Dr. Russell gives an interesting report on the Cleveland Convention.
- March 2-3.* The excitement caused by the small school's basketball tournament in Russell Hall comes to a grand finale when Gorham High wins the championship.
- March 5.* The drive for registration for next year begins.
- March 7.* Mr. Stewart speaks at a tea for the Poetry Club.
- March 8.* Evidently some of the Juniors decide to help (or hinder?) the House Committee for one hundred letters are kindly collected tonight—but also redistributed on the second floor of Robie.
- March 10.* Were you in the round-up? Dr. Russell checks the attendance in Chapel.
- March 13.* Who are the "Milk-fed commuters?"
- March 15.* And again no ice-cream! Isn't that freezer fixed yet?
- March 16.* The B3 Rural Sociology Class is fortunate in having Mrs. Spearin talk to them.
- March 16.* A St. Patrick's Day Program is presented by the Library Club.
- March 17.* Who was the member of the faculty who politely insisted on standing on the buzzer in Jordan's?
- March 17.* The Oxford County Club celebrate St. Patrick's Day by giving a dance in Center.
- March 19.* Charlotte Bailey "dresses up" for the girls on third floor.
- March 19.* Beginning today the Art Exhibition at the Junior High School draws a lot of attention.
- March 20.* The dormitory seems like a beehive! Everyone is busy—especially with those C. W. A. workers around!
- March 20.* Miss Schlesing, of Portland, speaks to the Campfire.
- March 21.* The advent of spring!
- March 22.* Suppose you received a package in which you found a bomb, what would you do? Receive instructions at "Aunt Abigail's Bomb" in Center!
- March 23.* The Dramatic Club amuses the students and faculty with a Puppet Show.
- March 24.* A real, honest-to-goodness social with games, entertainment, and refreshments, is sponsored by the Y. W. C. A.
- March 27.* Mr. Packard conducts Chapel.
- March 27.* Miss Flint, due to an accident, comes to the Faculty Banquet on crutches!
- March 29.* The Hershey Chocolate Company takes us to Hershey, Pa.
- March 29.* Gorham students are patriotic! Here's proof. Some classes are stopped so that we might gaze upon the new flag pole!
- March 30.* A beautiful Easter service is presented in Chapel by the Girls' Glee Club.

and GREEN WHITE



APRIL

- April 1.* Because of the rain the Sunrise Service planned by the Y. W. is held in the Chapel.
- April 3.* Tracy proves his debating ability in class!
- April 4.* The Audubon Society treats us to an educational, but interesting, bird show.
- April 5.* The grand spring cleaning begins!!
- April 6.* Members of the Dramatic Club present a special Chapel program.
- April 6.* What a grand and glorious feeling! Vacation begins tonight.
- April 16.* Back to studying after ten days of vacation.
- April 17.* One more quarter to go!
- April 18.* Surprise! New furniture in Robie Hall reception room.
- April 19.* Three cheers for Patriot's Day! Another vacation!
- April 19.* Did you see that play "Gathering the Nuts" at the Library Club party? The actors and actresses were superb!
- April 22.* The Massachusetts Club gives the "Christening Hop" in Center. Isn't the new floor smooth?
- April 24.* At last! A radio in G. N. S., presented by the Dramatic Club.
- April 25.* What was the attraction that made Paul Chapman forget that his thumb was under the paper-cutter?
- April 26.* We're beginning to hear a lot about baseball!
- April 26.* Some more sand improves the parking grounds.
- April 27.* Burr claims that you don't think of the pain when you sit on a tack but—"Who put that there?"
- April 28.* The Juniors stage a snappy victory over the Mid-Seniors.
- April 29.* Quite an interest is shown in May flowers these days!
- April 30.* The poets in our midst are very busily engaged in obtaining ideas for Class Odes. Oh! for an inspiration!

and GREEN WHITE



MAY

- May 1.* Volley ball players have a banquet in the dining hall.
- May 1.* Dr. and Mrs. Russell entertain the faculty.
- May 1.* The unsuspecting occupants of Robie Hall prove to be quite fast in fire drills.
- May 2.* Don't get lost in the crowd at the two-reel movie presented in Russell Hall by the Y. M. tonight!
- May 3.* The first baseball game was a huge success—for South Portland!
- May 5.* At last that long-talked-of event is here—the May Ball! And a lovely time was had by all!
- May 5.* But—to end the day perfectly, some of our fair, young inmates were locked out. And then, there were the two maidens who had some difficulty in locating the keys for their car!
- May 7-11.* Those flower posters are evidence of our many talented students—or are they?
- May 7.* Westbrook takes over Gorham, 3 to 2.
- May 7.* Isn't G. N. S. and the Training School going to look nice with all the new trees, shrubbery, and improvements?
- May 9.* The Dramatic Club gives a tea in honor of Miss Johnson in Robie Hall reception room.
- May 10.* Gorham whales Fryeburg, 14-4.
- May 10.* The Poetry Club goes picnicking.
- May 11.* That same club winds up the busy week with a beautiful Mother's Day program in Chapel.
- May 12.* The South N. E. Branch of Gorham Alumni Association meets at the Parker House, Boston.
- May 12.* Gorham journeys to Biddeford for a baseball game.
- May 14.* The Y. W. C. A. Senior Cabinet welcomes the new cabinet at a banquet.
- May 16.* Another home game with St. Louis.
- May 17.* Portland Alumni Association meets at Columbia Hotel, Portland.
- May 18.* Open House Day at Gorham to welcome prospective "Gorhamites."
- May 19.* The return game at Fryeburg!
- May 23.* What a schedule that baseball team has. Return game at South Portland.
- May 25.* National Honor Society takes charge of Chapel.
- May 25.* Picnicking seems to be contagious. It's the Commuters this time.
- May 26.* Keene and Gorham compete again. This time in baseball.
- May 30.* Memorial Day means a short vacation.

and GREEN WHITE



JUNE

- June 1.* That famous combination—Plaisted and Massey—sponsor what promises to be an exciting bout between Bean and Chapman!
- June 2.* Here it is! The Alpha Lambda Beta frat outing.
- June 6.* The Library Club keeps up with the times by going picnicking, too!
- June 7.* The Annual Y. W. picnic causes some more excitement and merriment.
- June 9.* We'll see some more sunburns now—due to the Lambda Pi Sigma frat party.
- June 12.* Those graduates ought to be able to march by Commencement!
- June 14.* The Y. W. ends its program with a talk by Dr. Russell.
- June 15.* With fond good-byes, the Juniors depart for summer vacations.
- June 16.* What a busy day! We are honored with the presence of a great many alumni; the faculty gives the graduates a reception; and the Seniors present their class play—all in the same day!
- June 17.* Mr. Stewart delivers the Baccalaureate Sermon at the Vesper Service in Russell Hall.
- June 18.* Graduation! Commencement! Whatever it is, we leave as full-fledged teachers.

GREEN and WHITE

Autographs

GREEN and WHITE

To the Class of 1934

I wish you all the pleasures and happiness of life and success in your chosen profession.

LOUIS J. CHRISSIKOS, Prop.

L
O
U
I
S'



P
L
A
C
E

WHERE ALL STUDENTS MEET

We serve you the best food and refreshments with the best service for your money.

Steaks	Banana Splits	Fruit
Chops	Royals	Confectionery
Salads	Velvets	Sodas
Soups	Normal Special	Ice Cream
Stews	Sundaes	Pop Corn

Novelties - Films - Cameras - Graduation Gifts

To all the members of the faculty, students and organizations at G. N. S., I wish to express my sincere thanks for the support given me during the last year. May our friendship continue during the next year.



Compliments of

A FRIEND

Compliments of

DR. C. J. BOUFFARD
GORHAM, MAINE

HARRY RAE BURN

Successor to
BROWN, COSTUMER

*Costumes, Make-up, Material
and Wigs*

542½ Congress Street, Portland
TELEPHONE DIAL 2-2173

OWEN, MOORE & CO.

Portland, - Maine

BETTER FASHIONS FOR
JUNIORS

HARMON C. CROCKER

Trade Composition

Linotype, Ludlow, Thompson Caster,
Elrod, Make-up

394 FORE ST., PORTLAND, MAINE

FESSENDEN'S

*Dennison Goods, Fountain Pens,
Stationery, Greeting Cards,
and Tallies*

497 Congress Street

Compliments of

A FRIEND



School Supplies Distinctive Stationery
Fountain Pens

A LARGE ASSORTMENT OF GREETING CARDS

FINE CHOCOLATES AND CANDIES

EASTMAN CAMERAS AND FILMS

Quality Developing, Printing, Enlargements

GEORGE S. BURNELL

GORHAM, MAINE

FIRST CLASS HAIRCUTTING

Ask the Normal Crowd

Maurice Dixon, Prop.

P. MOODY, Assistant

"On the Way to Normal Hill"

**Gorham Electric &
Radio Shop**

E. A. NEAL, Prop.

Range Burners, Refrigeration
and Radio Supplies

54 State Street, Gorham, Maine
TELEPHONE 178

Three Cheers for G. N. S.

Home, Hotel and Institutional
Outfitters

In Portland 72 Years

Oren Hooper Sons

Compliments of

**Foster - Avery's
THE SYSTEM CO.**

516 Congress Street, Portland, Me.

Our policy is not to sell apparel which is
lowest in price, but apparel which
is best for the least.

(THERE'S A DIFFERENCE)



Compliments of
THE ALBERT STUDIO

THE MEN'S SHOP
APPAREL FOR MEN AND BOYS
874 Main Street — Westbrook, Maine
THE VALUE FIRST STORE OF WESTBROOK

Compliments of
DR. GREEN
GORHAM, MAINE

EMILE BEGIN
*Men's and Boys' Clothing
and Furnishings*
BLUE GRADUATION SUITS
\$20 - \$28.50
842 Main Street, Westbrook, Maine
Telephone 668



The Final Test of Any Outing Equipment Is Not What
the Manufacturer Claims for It—But What
Service It Gives to the User

Hanold Outfitting Company
Designers and Manufacturers
STANDISH, MAINE

Outfitters
GIRLS' CAMPS · SCHOOLS · COLLEGES
GYMNASIUM CLOTHING OUTING SPECIALTIES
CAMP UNIFORMS SPORTS WEAR

Hanold Merchandise is sold direct to the Consumer
One Profit · Personal Service · Prompt Deliveries

Official Outfitters Gorham Normal School



CRESSEY & ALLEN

EVERYTHING IN MUSIC
AND RADIO

517 Congress Street

PHILIP W. HAWKES
GROCERIES - PROVISIONS

Gorham, Maine
TELEPHONE 57

J. H. McDONALD CO.

F. J. MELAUGH, *Treas.*

SEA FOOD

158 Commercial St., Portland, Me.

BEST WISHES OF
Carswell's Drug Store

Compliments of
GORHAM GARAGE
IRA C. ALDEN, *Prop.*

Compliments of
**"The Green & White
Store"**

ELLA RANKIN, *Prop.*

SANBORN'S
CLEANSING, PRESSING, DYEING
AND REPAIRING
*High Grade Work at
Reasonable Prices*
MEN'S TAILOR MADE SUITS & TOP COATS
\$15.00 — \$40.00



Smart Apparel—

FOR SCHOOL, SPORT AND BUSINESS WEAR

Exclusive in Character—But Not Expensive
Special prices to Students for Commencement

BENOIT'S

Westbrook

Portland

The Sporting Goods Store

HEADQUARTERS FOR SCHOOL ATHLETIC SUPPLIES

Write for Catalogue

THE JAMES BAILEY COMPANY

264-266 Middle Street,

Portland, Maine

Compliments of
PORTEOUS, MITCHELL & BRAUN CO.

ELEVATOR SERVICE

DIAL 2-6836

HARRY L. PIKE
OPTOMETRIST

514 Congress Street, Portland, Me.
Appleton Block - 3rd Floor

The Randall Teachers' Agency
H. H. RANDALL, *Manager*
52½ Libby Bldg., Congress Square,
Portland, Maine



Compliments of
Gorham Savings Bank

FRED W. SMALL
ATTORNEY AND COUNSELLOR
AT LAW
Corner Main and South Streets
Gorham, Maine



*Strictly a woman's store specializing in stylish apparel
of quality so entirely dependable as to make
possible our guarantee of satisfaction
to every customer*

Compliments of
Parker's Home Bakery
and Lunch Room
Gorham, - - - Maine

Gorham Hardware Co.
ERNEST J. BRAGDON, Prop.
Paints and General Merchandise
ELECTRICAL AND PLUMBING
SUPPLIES
Corner Main and South Streets



Printwell Printing Company
JOHN H. DOOLEY, MANAGER

Printers of
"The Green and White"

9 TEMPLE STREET, PORTLAND, MAINE

Engraving by---

PORTLAND ENGRAVING CO.
12 Monument Square, Portland, Maine

MAKERS OF FINE ENGRAVINGS FOR SCHOOL ANNUALS

ROBERT BURLIN & SON

Book Binders
Paper Rulers

301 CONGRESS STREET, BOSTON, MASS.

and
GREEN WHITE



