

1933

Green and White 1933

Gorham Normal School

Follow this and additional works at: https://digitalcommons.usm.maine.edu/archives_yearbook

 Part of the [History Commons](#)

Recommended Citation

Gorham Normal School, "Green and White 1933" (1933). *Yearbooks*. 8.
https://digitalcommons.usm.maine.edu/archives_yearbook/8

This Book is brought to you for free and open access by the University Archives at USM Digital Commons. It has been accepted for inclusion in Yearbooks by an authorized administrator of USM Digital Commons. For more information, please contact jessica.c.hovey@maine.edu.



Mary L. Hartings





GREEN and WHITE
1933

Theme: Growth

VOLUME XV

PUBLISHED BY
THE SENIOR CLASS
GORHAM NORMAL SCHOOL
GORHAM, MAINE



MISS KATHARINE HALLIDAY

TO MISS KATHARINE HALLIDAY,

for thirty-eight years

a teacher in this school,

WHOSE LIFE AND TEACHINGS

have been an inspiration

to many generations of students,

WHOSE NOBILITY OF CHARACTER

has animated all those

lives that have touched hers,

WE, THE FACULTY AND STUDENTS

of the Gorham Normal School,

ever mindful of our privilege, do

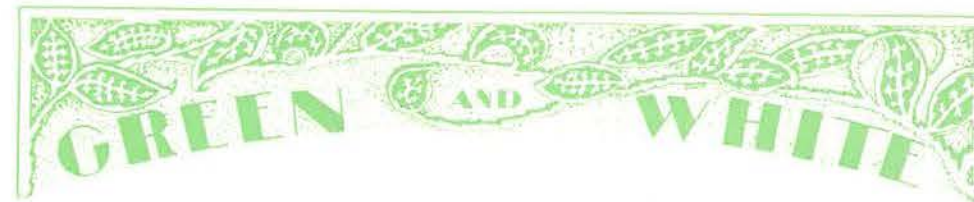
Dedicate this 1933 edition of the

GREEN AND WHITE



FOREWORD

The Editorial Board has chosen "growth" for the theme of this issue of the GREEN AND WHITE. It is fitting that we should do this, as the book is dedicated to Miss Halliday and shows the development of the school during her long period of service here. The art department has depicted this period of maturation, using trees as a symbol. We hope that you like our book and that in the years to come the expansion and development on Normal Hill will produce a school more nearly perfect than ours of 1933.



ARRANGEMENT

THEME

DEDICATION

FOREWORD

CAMPUS SCENES

FACULTY

SENIORS

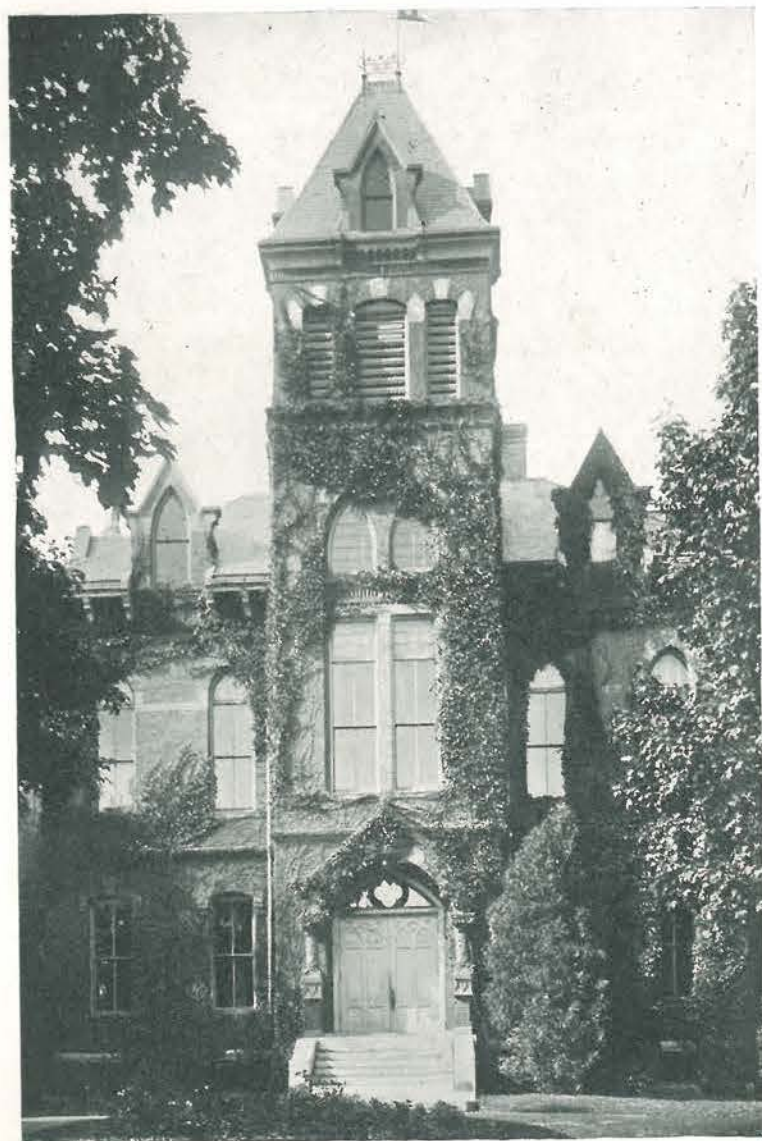
JUNIORS

ALUMNI

ORGANIZATIONS

ATHLETICS

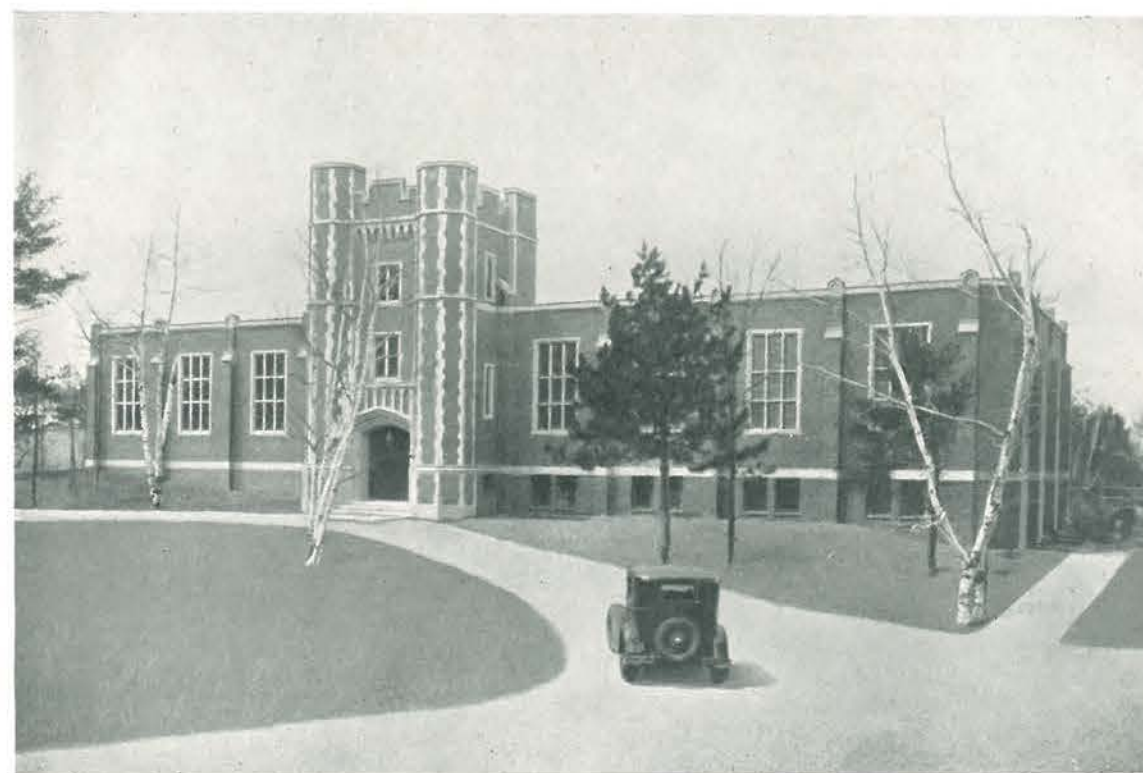
SCHOOL INTERESTS



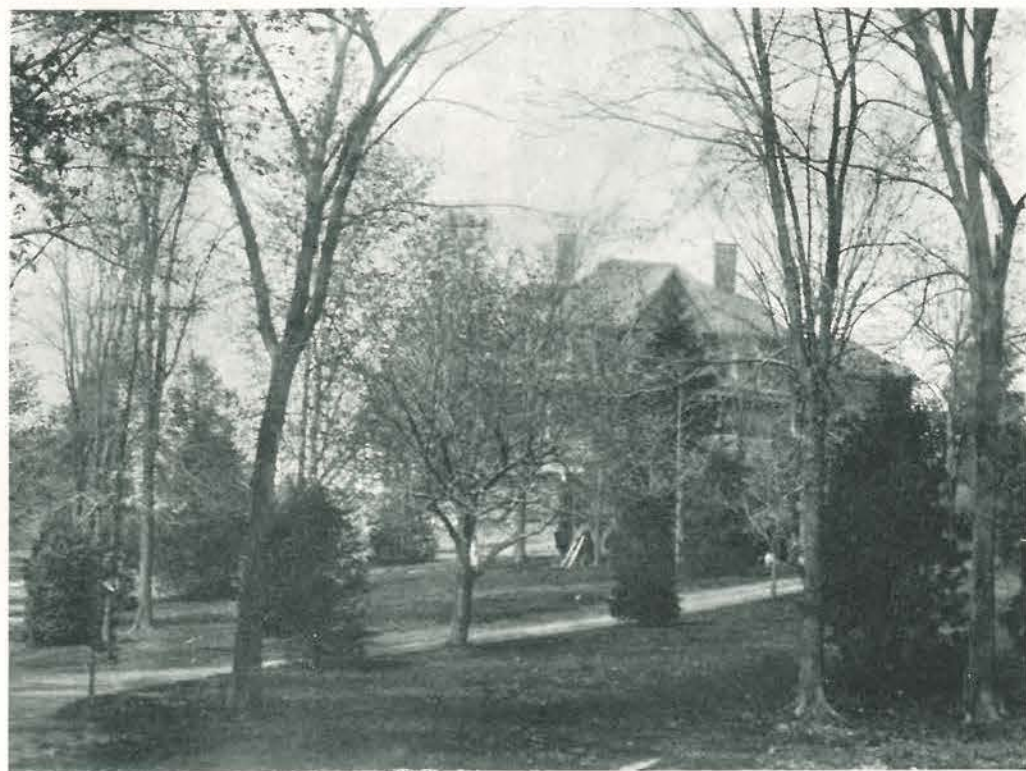
Entrance to Cortrell Hall



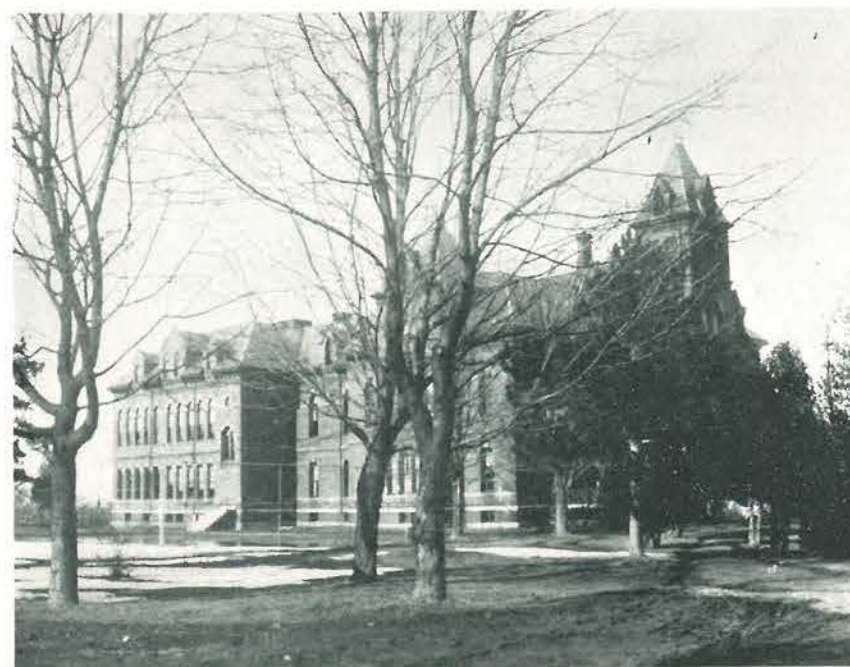
Main Doorway to Russell Hall



Russell Hall



Campus Trees
Principal's Residence in Background



Cortwell Hall from Russell Lawn



Academy Hall



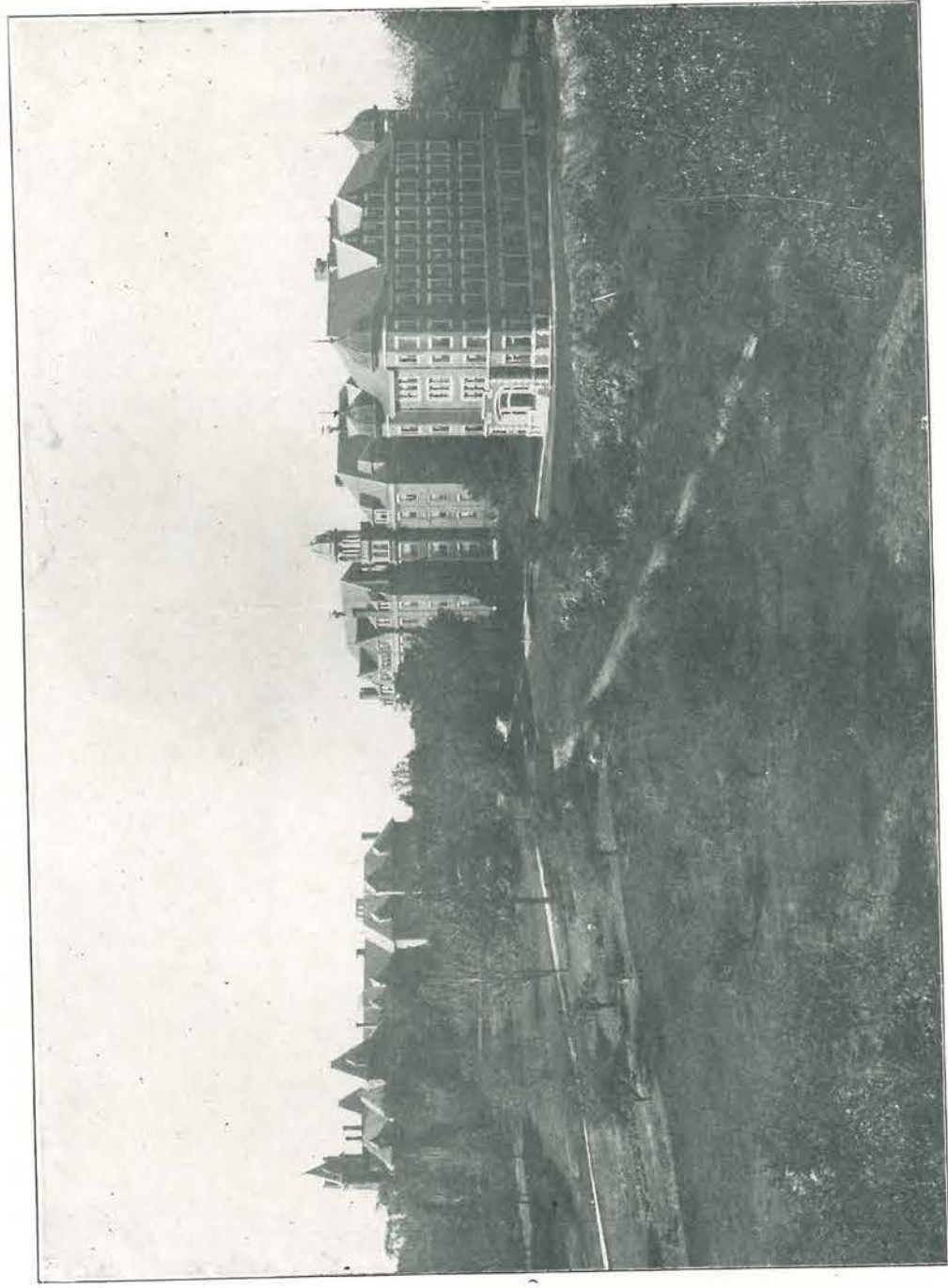
Forge and Machine Shop



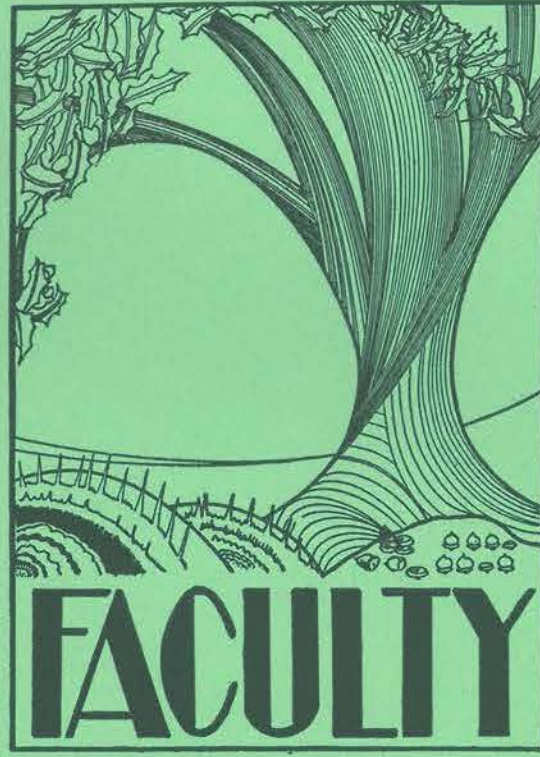
Robie and East Halls



Junior High School



Campus





A TEACHER'S PRAYER

Make me a better teacher, Lord, today
Than I was yesterday and days before.
Help me to see, O Lord, that more and more
I reach toward perfection in Thy way,
And not mine own. And granting that I may
A little richer be in teacher-lore;
Give me, I pray, O Lord, from Thy great store
Some spark of fire divine in what I say.

All this I ask, not for myself alone,
Nor for aggrandizement in eyes of men;
But for the sake of those, my youthful class,
Whose destiny to only Thee is known.

Let me not be content tomorrow then,
Unless I shall today's results surpass.

LOUIS BURTON WOODWARD.



WALTER EARLE RUSSELL, A. B., D. Ed.
(WESLEYAN UNIVERSITY, RHODE ISLAND COLLEGE OF EDUCATION)
Principles of Teaching

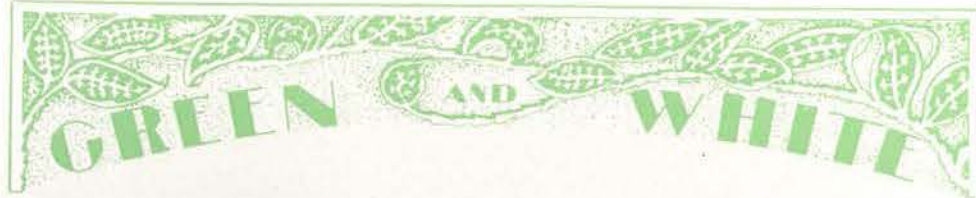
TO THE CLASS OF 1933

To become a citizen of the United States an alien must not only swear allegiance to the United States but also must renounce allegiance to all other nations, especially to the one from which he came. In life in general it is otherwise. From childhood to maturity responsibility is cumulative.

In your early years the home circle demanded your allegiance. You were responsible to father and mother, and to them were tied up your joys and sorrows. After a bit was added allegiance to school. To it you owed your best and from it you received in proportion as you gave your best. Love for home and responsibility to it still remained.

Soon you will leave school as a student bearing a State certificate to teach. Thereby a new allegiance will be added to those already existing. You will be responsible to pupils, to parents, to school officers and to the State that certificated you. As you meet those new responsibilities honorably and efficiently you will prize more highly and fulfill more completely your obligations of allegiance to home and school.

WALTER EARLE RUSSELL.



LOUIS BURTON WOODWARD, A. B.
BATES COLLEGE, HARVARD LAW SCHOOL, HARVARD
SUMMER SCHOOL
Science, School Law, Ethics.

A true disciple of the sciences, open-minded and ever patient. He is a teacher of whom it can truly be said, "The flame of knowledge grew brighter in the minds he taught."



GERTRUDE LINCOLN STONE, B. S., A. M.
FARMINGTON NORMAL SCHOOL, COLUMBIA UNIVERSITY
Psychology, Rural Sociology, History of Education.

Gradually but effectively transforming prospective teachers "from what they are to what they ought to be" Miss Stone inspires all with a sense of increasing knowledge in the work they are undertaking.



NELLIE WOODBURY JORDAN, B. S.
BOSTON UNIVERSITY, HARVARD SUMMER SCHOOL,
COLUMBIA UNIVERSITY, PALMER SCHOOL OF
PENMANSHIP

History, Handwriting.

Was there ever a woman more generously endowed with those virtues so necessary to successful teaching and the giving of wise counsel than our Dean of Women?



JESSIE LOUISE KEENE, PH. B.

WESLEYAN UNIVERSITY

General Science, Bird Study.

Rare is the gift of a charming yet unassuming manner which always makes a teacher beloved by her pupils.



MARY LOUISE HASTINGS
CASTLETON NORMAL SCHOOL, COLUMBIA UNIVERSITY
SUMMER SCHOOL, COLORADO STATE TEACHERS'
COLLEGE, HYANNIS NORMAL SCHOOL

Supervised Observation, Director of Training.

Miss Hastings is the very skillful pilot of many bewildered voyagers on the unfamiliar seas of pedagogy.



EVERETT SHERMAN PACKARD
GORHAM NORMAL SCHOOL, OSWEGO NORMAL SUMMER
SCHOOL, RUTGERS SUMMER SCHOOL

Printing, Sheet Metal and Wrought Ironwork, Athletics.

One who is continually working the details into final perfection. "We want it to be perfect, that is, as near as any human being can make it."



MABEL FRANCES RYAN, B. S.
FRAMINGHAM NORMAL SCHOOL, BOSTON UNIVERSITY
Geography, Nature Study.

Everyone knows what we think of Miss Ryan, "So let's put it on paper." She is a teacher in the true sense of the word, beloved by all.



GEORGE ALBION BROWN
GORHAM NORMAL SCHOOL, COLUMBIA UNIVERSITY
Woodworking, Machine Shop, Electrical Work,
Theory in Woodwork, Carpentry, Wood Turning, Su-
pervisor in Woodwork for Practice Teachers in Grades
Five to Eight.

Mr. Brown is loyalty personified. "Boys, let's get to work and show what we can do."

GREEN AND WHITE



MIRIAM EUNICE ANDREWS, B. S.
NEW ENGLAND CONSERVATORY OF MUSIC, AMERICAN
INSTITUTE OF NORMAL METHODS, COLUMBIA
UNIVERSITY, JUIILLARD SCHOOL OF MUSIC
Music.

"Music hath its charms," which are accentuated by the grace and poise of the talented woman who has helped to make our lives so enjoyable here.



CLIFFORD O. T. WIEDEN, B. S.
COLBY COLLEGE, ACADIA UNIVERSITY, BATES
SUMMER SCHOOL
Economics, Sociology, Tests and Measures, Athletics.
Mr. Wieden is a past master of the art of keeping the mental blades of students ground to a razor edge.



VELMA LUCILLE HOLBROOK, A. B., Ed. M.
WHEATON COLLEGE, MIDDLEBURY COLLEGE,
HARVARD COLLEGE
French, Latin.

In her classroom, Miss Holbrook transports one, as if on a magic carpet, to the sunny fields of Normandy.



ESTHER ELIZABETH WOOD, A. B., A. M.
COLBY COLLEGE, RADCLIFFE COLLEGE
United States History, Modern European History,
World History.

In Miss Wood we find a genuine friend who has given us much to carry away with us besides that contained in books.

GREEN AND WHITE



JEANETTE SHIRLEY JOHNSON, B. S.
GORHAM NORMAL SCHOOL, BOSTON UNIVERSITY
Composition, Literature.

Miss Johnson's alertness, vivacity, and versatility admirably qualify her to impart her extensive knowledge, which reaches far into the dramatic field, in a most fascinating way.



HELENE CATHERINE WIHRY, B. S.
MASSACHUSETTS SCHOOL OF ART
Art.

Always guided by the sentiment of beauty, Miss Wihry meets with signal success in teaching that subject which has so aptly been described as "the revelation of the invisible reality through the senses."



LAWRENCE NELSON CILLEY
GORHAM NORMAL SCHOOL, OSWEGO NORMAL SCHOOL,
STOUT INSTITUTE

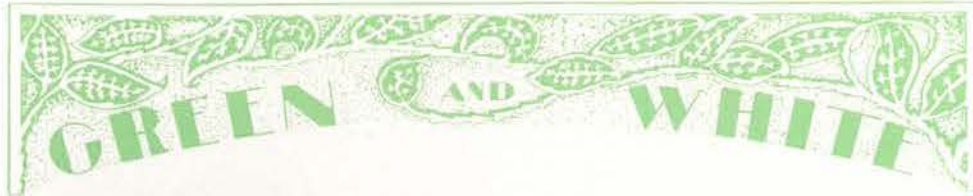
Woodworking, Forging, Drafting, Trade and Job Analysis.

Always seeking for greater efficiency in man and machine, Mr. Cilley is conscientious and systematic. "A place for everything and everything in its place. All in apple pie order."



EVELYN MARGARET LITTLEFIELD, A. B.
DEFIANCE COLLEGE
Home Arts, Science.

In later years many homes will be made happier and many lives will be enriched and rendered more fruitful because of the work of our teacher of home economics.



SARAH REED, B. P. E.
MARYLAND COLLEGE FOR WOMEN, CHICAGO NORMAL
SCHOOL

Physical Education.

Radiating good health and the best of spirits, she is a veritable fountain of inspiration to those interested in any athletic activity.



ETHELYN FOSTER UPTON, B. S.
GORHAM NORMAL SCHOOL, COLUMBIA UNIVERSITY
Mathematics.

Logarithms, quadratics, polynomials, et cetera, become fascinating when presented by her who was unanimously welcomed to Normal Hill.



BESS O. LEWIS, A. B., M. S.
HIRAM COLLEGE, OHIO; STATE COLLEGE, OREGON
Literature.

A newcomer this year, but already she has the friendship, confidence and admiration of all those with whom she comes in contact.

LYDIA MAY JENCKS, B. S., A. M.
RHODE ISLAND STATE COLLEGE, BROWN UNIVERSITY,
SUMMER SESSIONS, STATE NORMAL SCHOOL,
GENESEO, N. Y.

In the sanctuary of our new library, Miss Jencks is ever ready to smooth out our troubles, and open to us many hidden treasures in books.



HAYDEN LAVERNE ANDERSON, B. S. E.
GORHAM NORMAL SCHOOL, COLBY COLLEGE EVENING
SCHOOL, BATES COLLEGE SUMMER SCHOOL,
BOSTON UNIVERSITY

Junior High School Administration and Organization, Principal of Training School, English in Junior High School.

With his quiet, easy manner and constant efforts, Mr. Anderson has risen in a few short years to the enviable position of principal in the Junior High School.



HARRIETTE GAYNELL TRASK
EASTERN STATE NORMAL SCHOOL, HYANNIS NORMAL
(SUMMER SCHOOL), HARVARD UNIVERSITY (SUM-
MER SCHOOL), COLUMBIA UNIVERSITY
(SUMMER SCHOOL)

History, Geography, Civics, Physiology in Junior High School.

Miss Trask's dignity and friendly attitude toward all command coöperation of the highest type which is so necessary in the modern school.



LOIS ELEANOR PIKE
GORHAM NORMAL SCHOOL, HARVARD SUMMER SCHOOL,
COLUMBIA UNIVERSITY SUMMER SCHOOL

Primary Reading, Primary Arithmetic, Supervisor of the Junior Primary in the Training School.

"Before I go, I must tell you this story!" Likewise, do many interesting little incidents find their way into her classes to help brighten up the day's work.



EMMA FRANCES HARRIS
WHEELLOCK KINDERGARTEN TRAINING SCHOOL,
BOSTON UNIVERSITY

Kindergarten Theory, Supervisor of Kindergarten in Training School.

No task is too little to be overlooked by this conscientious teacher who delights in doing small things in a great way.



ETHELIND IZORA SCOTT, B. S. E.
CASTINE NORMAL SCHOOL, BOSTON UNIVERSITY
Mathematics and General Science in Junior High School.

Another recent addition to the training school faculty who speaks of zodiacs, ecliptics, constellations and asteroids as easily as we speak of the weather.



NORMA GLADYS THURSTON

GORHAM NORMAL SCHOOL

Supervisor of Grades Five and Six.

All difficulties are overcome by her outwardly calm and collected manner while her vivacious spirit is transferred to those about her.



RUTH LOUISE MILLER

GORHAM NORMAL SCHOOL

Supervisor of Grades Three and Four.

Fortunate indeed are those pupils in whose teacher is found the rare combination of tactfulness, good judgment, and enthusiasm for her work that Miss Miller possesses.



HELEN LUCRETIA WHITCOMB

GORHAM NORMAL SCHOOL

Supervisor of Grades One and Two.

Miss Whitcomb's charming personality is a delight to behold and wins for her an ever widening circle of friends.



MARY L. PEDERSON

GORHAM NORMAL SCHOOL, CASTINE NORMAL (SUMMER) SCHOOL

Supervisor of West Gorham Model Rural School.

Her heart and soul are attuned to the rural school as she strives to make her surroundings beautiful and attractive to herself and others.

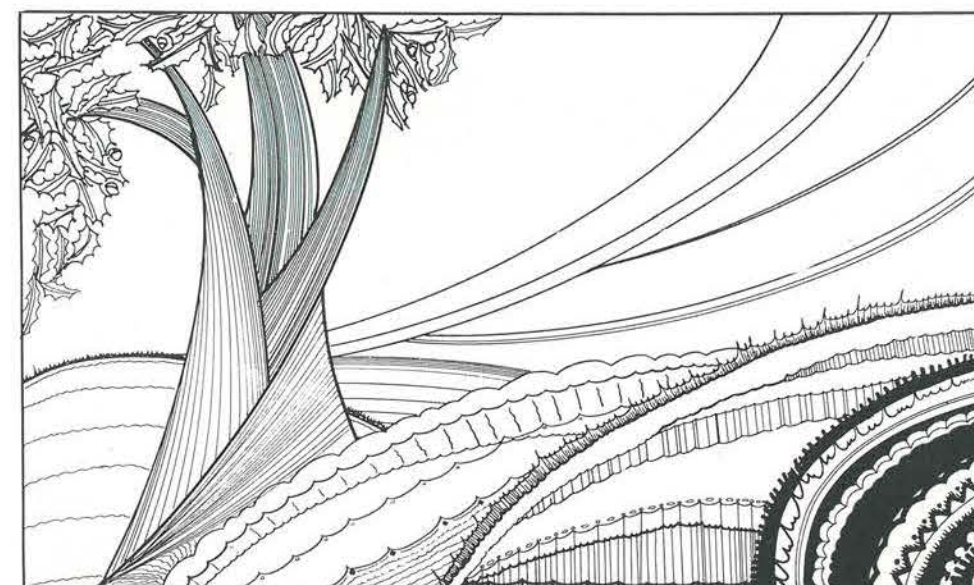


RUTH GERTRUDE SIMOND, M. A.

BOSTON UNIVERSITY

(1931-1932) Mathematics.

Our loss is Hampton Institute's gain. Miss Simond was a mathematician as efficient and industrious as Gorham Normal School ever had.





Miss Jenkins & Miss Wood



Miss Hastings



Miss Hastings



Miss Wilby & Miss Lewis



Dr. & Mrs. Russell



Mr. Gilroy & Mr. Brown



Miss Hastings, Miss Stone
and Miss Brown

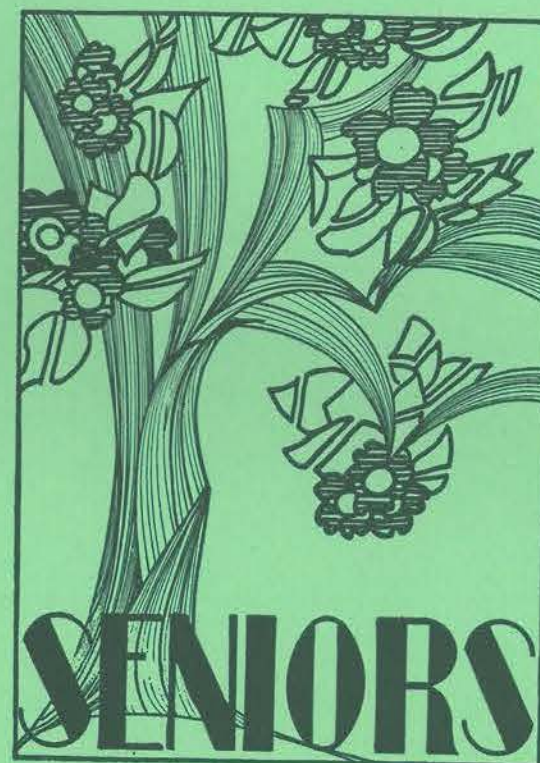


Miss Thurston



Miss Woodward and
Miss Stone

FACULTY





Thomas Abbott
President

William Cragin
Vice-President

Vivian Scott
Secretary-Treasurer

ADVANCED SENIORS

"I hold it truth with him who sings
To one clear harp in divers tones,
That men may rise on stepping stones
Of their dead selves to higher things."—*Tennyson*.

After three years' training, we are about to step out into the ever-material world, still filled with that burning desire with which we entered—growth. We have grown during our time here and yet we still feel that but little headway has been made along that endless path of progress. During our first year, we grew socially as well as mentally and came to recognize ourselves as social beings.

When we reached new communities, we will continue on, along the right paths over which our feet have been guided by the excellent help of our faculty. Still we must go on, for, to quote Cosgrove, "The teacher who ceases to grow has crossed the deadline and begins to die at the top."



ADVANCED SENIORS, JUNIOR HIGH



THOMAS EDWARD ABBOTT "Ted"
North Berwick High School North Berwick, Maine
President of Class (1, 2, 3, 4, 5); York County Club (1, 2, 3, 4, 5); Y. M. C. A. (1, 2, 3, 4, 5); "Oracle" Staff (3, 4); GREEN AND WHITE (3, 4).

HARRY LEE BRAWN "Brown"
Williams High School Oakland, Maine
Lambda Pi Sigma (1, 2, 3, 4, 5); Glee Club (1, 2, 3, 4).



WILLIAM O'CONNELL CRAGIN "Bill"
Portland High School Portland, Maine
Vice-President of Class (1, 2, 3, 4, 5); President of Dramatic Club (1, 2, 3, 4, 5); GREEN AND WHITE (3, 4); Lambda Pi Sigma (1, 2); Civic Committee (3, 4, 5).

LEONARD FORD CURTIS "Curt"
Bowdoinham High School Bowdoinham, Maine
Orchestra (1, 2, 3, 4, 5); Glee Club (1, 2, 3, 4, 5); Y. M. C. A. (1, 2, 3, 4, 5); Lambda Pi Sigma (1, 2, 3, 4, 5).



CLIFFORD GILBERT "Cliff"
Williams High School Oakland, Maine
Lambda Pi Sigma (2, 3, 4, 5); Glee Club (1, 2, 3, 4, 5); Basketball (1, 2, 3, 4, 5); Outdoor Club (1, 2, 3, 4).

RACHEL ADELAIDE HALLETT "Rachie"
Williams High School Oakland, Maine
Y. W. C. A. (1, 2, 3, 4, 5); House Committee (3, 4); Dramatic Club (3, 4); Outdoor Club (3, 4).



SYLVIA GERTRUDE HANSCOM
Gorham High School Gorham, Maine
Orchestra (1, 2, 3, 4, 5); Commuters' Club (1, 2, 3, 4, 5); Dramatic Club (1, 2); Art Club (3, 4).

ELIZABETH GEORGIA HUNTOON "Betty"
Stephens High School Rumford, Maine
Dramatic Club (1, 2, 3, 4, 5); Oxford County Club (1, 2, 3, 4, 5); Civic Committee (3, 4, 5).



RUTH ELEANOR JACKINS "Jack"
Houlton High School Houlton, Maine
Aroostook County Club (3, 4); House Committee (4, 5); Y. W. C. A. (3, 4).

WINIFRED UPTON LAMB "Winnie"
Camden High School Camden, Maine
Basketball (1, 2, 3, 4, 5); Y. W. C. A. (1, 2, 3, 4, 5); Outdoor Club (1, 2, 3, 4).



JOSEPH LUIZ "Joe"
Fairhaven High School Fairhaven, Mass.
Massachusetts Club (1, 2, 3, 4); Lambda Pi Sigma (1, 2, 3, 4, 5); Civic Committee (3, 4, 5); GREEN AND WHITE (3, 4); Class Basketball (1, 2, 3, 4).

DORIS PREBLE MARR "Dot"
Livermore Falls High School Livermore Falls, Maine
Orchestra (1, 2, 3, 4, 5); Y. W. C. A. (1, 2, 3, 4, 5); Civic Committee (1, 2, 3, 4, 5); Glee Club (1, 2, 3, 4, 5); "Oracle" Staff (1, 2, 3, 4).



MILDRED McALLISTER "Mac"
Gorham High School Gorham, Maine
Civic Committee (1, 2, 3, 4); Art Club (1, 2); Commuters' Club (3, 4); GREEN AND WHITE (3, 4).

CHARLOTTE DEANE MITCHELL
Gorham High School Gorham, Maine
Glee Club (1, 2, 3, 4, 5); Orchestra (1, 2, 3, 4, 5); Editor-in-Chief of GREEN AND WHITE (3, 4).



WINONA AMANDA PACKARD "Winnie"
Deering High School Portland, Maine
Commuters' Club (1, 2, 3, 4, 5); Commuters' Basketball (1, 2, 3, 4); Glee Club (5).

GENEVIEVE ADELLE PORTER "Gen"
Ricker Classical Institute Houlton, Maine
Y. W. C. A. (1, 2, 3, 4, 5); Dramatic Club (1, 2, 3, 4); Camp Fire Girls (3, 4); Aroostook County Club (3, 4, 5); Athletic Council (5); Civic Committee (5); Glee Club (5).



LEONARD MARTIN PROVENCAL "Len"
Skowhegan High School Skowhegan, Maine
Lambda Pi Sigma (1, 2, 3, 4, 5); Glee Club (1, 2, 3, 4, 5); Basketball (1, 2, 3, 4, 5); Baseball (1, 2, 3, 4); Dramatic Club (5).

WILLIAM LITTLEFIELD RANSOM "Bill"
Good Will High School Hinckley, Maine
Lambda Pi Sigma (1, 2, 3, 4, 5); "G" Club (1, 2, 3, 4, 5); Glee Club (1, 2, 3, 4, 5); GREEN AND WHITE (3, 4); Orchestra (3, 4, 5); Baseball (2, 4).



MERVYN SANDS ROGERS "Rog"
Hollis High School Hollis, Maine
Commuters' Club (1, 2, 3, 4, 5); Class Basketball (1, 2, 3, 4); Class Baseball (4).

GRACE VIVIAN SCOTT "Viv"
Portland High School Portland, Maine
Commuters' Club (1, 2, 3, 4, 5); Class Secretary (3, 4, 5); Art Club (5); Civic Committee (5).





RAYMOND HENRY STORY "Ray"
Gardiner High School Gardiner, Maine
Y. M. C. A. (1, 2, 3, 4, 5); Alpha Lambda Beta (1, 2, 3, 4, 5);
"G" Club (1, 2, 3, 4, 5); Cross Country (1, 2, 3, 4).

ELIZABETH WADSWORTH SYPHERS "Betty"
Cornish High School Cornish, Maine
Y. W. C. A. (1, 2, 3, 4, 5); Dramatic Club (1, 2, 3, 4, 5);
House Committee (4); GREEN AND WHITE (3, 4); York County
Club (1, 2, 3, 4, 5); Editor-in-Chief of "Oracle" (5).



JANET TAPLEY
Williams High School Oakland, Maine
Y. W. C. A. (1, 2, 3, 4); Glee Club (1, 2, 3, 4, 5); Orchestra
(1, 2, 3, 4, 5); House Committee (1, 2, 5); GREEN AND WHITE
(3, 4); Operetta (2, 4).

HARRY RANDOLPH TYLER "Tyler"
Samuel D. Hanson High School Buxton, Maine
Commuters' Club (1, 2, 3, 4, 5); Dramatic Club (3, 4); Lambda
Pi Sigma (3, 4); GREEN AND WHITE (3, 4).



GEORGE WASHINGTON WAKEFIELD
Kennebunkport High School Kennebunkport, Maine
Alpha Lambda Beta (1, 2, 3, 4, 5); Literary Editor of GREEN
AND WHITE (3, 4); Literary Editor of "Oracle" (3, 4, 5).

FLORA BLANCHE WRIGHT "Flossie"
Camden High School Camden, Maine
Outdoor Club (1, 2, 5); Athletic Association (1, 2, 3, 4); Y. W.
C. A. (5).

ADVANCED SENIORS, INDUSTRIAL ARTS



LINWOOD AUSTIN ABBOTT "Woodie"
Brewer High School Brewer, Maine
Y. M. C. A. (1, 2, 3, 4); Alpha Lambda Beta (1, 2, 3, 4, 5);
Basketball (1, 2, 3, 4); Cross Country (1, 3, 5); Baseball (2, 4).

CHARLES STANLEY ALLEN "Charlie"
Sanford High School Sanford, Maine
Cross Country (1, 3, 5); Basketball (3, 4, 5); GREEN AND WHITE
(3, 4); Alpha Lambda Beta (3, 4, 5).



CLINTON ALVIN CHANDLER "Al"
Windham High School Windham, Maine
Alpha Lambda Beta (1, 2, 3, 4, 5); Commuters' Club (3, 4, 5).



EMILE DONALD COTE "Jerry"
Sanford High School Sanford, Maine
Cross Country (1, 3, 5); Commuters' Club (1, 2, 3, 4); Lambda
Pi Sigma (3, 4, 5); Class Basketball (1, 2, 3, 4, 5); GREEN AND
WHITE (3, 4); "G" Club (5).



DWIGHT MARSHALL INGHAM "Hingham"
Winthrop High School Winthrop, Maine
Y. M. C. A. (1, 2, 3, 4); Glee Club (1, 2, 3, 4, 5); Lambda Pi
Sigma (1, 2, 3, 4, 5); Basketball (3, 4, 5); Volley Ball (1, 2,
3, 4, 5).



ANDREW ADELBERT MCSORLEY "Andy"
Guilford High School Guilford, Maine
Cross Country (1, 3, 5); Y. M. C. A. (1, 2, 3, 4, 5); Lambda
Pi Sigma (1, 2, 3, 4, 5); "G" Club (1, 2, 3, 4, 5); Glee Club
(1, 2, 3, 4, 5); Basketball (1, 2, 3, 4, 5).



MAXWELL MOULTON "Max"
Gardiner High School Gardiner, Maine
Cross Country (1, 3, 5); Lambda Pi Sigma (1, 2, 3, 4); Y. M.
C. A. (1, 2, 3, 4, 5); Civic Committee (3, 4, 5); Basketball
(1, 2, 3, 4, 5); Baseball (2, 4).

BYRON RAWNSLEY
Sanford High School Sanford, Maine
Lambda Pi Sigma (1, 2, 3, 4, 5); Y. M. C. A. (1, 2, 3, 4, 5);
York County Club (1, 2, 3, 4); Glee Club (1, 2, 5).

ROLAND SAMUEL SMITH "Jack"
Littleton High School Littleton, New Hampshire
Cross Country (1, 3, 5); Y. M. C. A. (1, 2, 3, 4, 5); Alpha
Lambda Beta (1, 2, 3, 4, 5); Basketball (3, 4, 5); Business
Manager of "Oracle" (3, 4, 5).

EDWARD WRIGHT MULLIGAN TOBEY "Ed"
Skowhegan High School Skowhegan, Maine
Alpha Lambda Beta (3, 4, 5); Tennis (3, 4, 5); GREEN AND WHITE
(3, 4); Y. M. C. A. (5); Glee Club (3, 4).





Ruth Clay
President

Barbara Harmon
Vice-President

Virginia Brooks
Secretary

Madeline Swett
Treasurer

SENIORS, GENERAL COURSE

For two years we have been striving for the goal we have now reached. During these two years we have formed many lasting friendships. We have increased our knowledge and have come to realize the importance of character and initiative. Many of us have profited from observing other students seize every opportunity to push on to success. We have seen the value of having ideals to work for and we have created ideals of our own for which we have strived.

We have made teaching our aim in life. By working and through the coöperation of the faculty we have now reached the place where we can see our ambition about to materialize.

Throughout our lives may we always bear in mind the standards and ideals we achieved at Gorham Normal School, in order that we may make this aim of ours a success.



SENIORS, GENERAL COURSE



MARION BARBOUR
Newport High School
Newport, Maine
Y. W. C. A. (1, 2, 3); Outdoor Club (1, 2, 3); Orchestra (2, 3).

MARJORIE FONTNEAU BARRETT "Marge"
Attleboro High School
Attleboro, Mass.
Y. W. C. A. (3); Dramatic Club (3); Outdoor Club (1, 2, 3).



IMELDA BARRON "Imelda"
Madawaska Training School
Fort Kent, Maine
Aroostook County Club (3); Archery (3); Basketball (3).



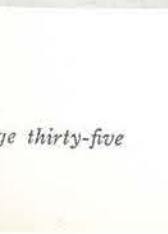
HELEN WAKELY BEDELL
North Berwick High School
North Berwick, Maine
Glee Club (1, 2, 3); Y. W. C. A. (1, 2, 3); York County Club (1, 2, 3).



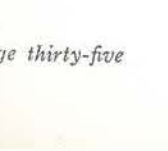
FLORENCE HARRIET BENSON
Wiscasset Academy
Jefferson, Maine
Y. W. C. A. (1, 2, 3); Outdoor Club (1, 2); Athletic Association (1, 2); Art Club (3).



DOROTHY LAURETTA BERRY "Dot"
Cornish High School
Cornish, Maine
Y. W. C. A. (1, 2, 3); Art Club (3); York County Club (3).



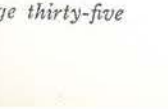
MARY ELLEN BOOKER
Lisbon Falls High School
Durham, Maine
Outdoor Club (3); Art Club (3).



LOAN ROWE BRACKETT "Lu"
Pennell Institute
Gray, Maine
Y. W. C. A. (1, 2, 3); Outdoor Club (3).

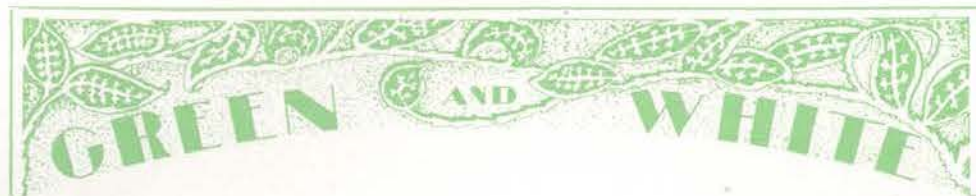


VIRGINIA HARRIETT BROOKS "Ginger"
Brunswick High School
Brunswick, Maine
Y. W. C. A. (1, 2); Dramatic Club (3); GREEN AND WHITE (3); Class Secretary (1, 2).



ELEANOR BARBARA BROWN "Happy"
Gorham High School
Gorham, Maine
Civic Committee (1, 2, 3); Glee Club (1, 2, 3); Operetta (2).





RUTH BURNELL
Greely Institute
Y. W. C. A. (1, 2, 3).
Cumberland Center, Maine



JEANETTE MARY CALIENDO
Mexico High School
Oxford County Club (1, 2, 3); National Honor Society (2, 3);
Y. W. C. A. (3); Glee Club (3).
Mexico, Maine



MARGARET VEAZIE CATES
Oneonta High School
Y. W. C. A. (1, 2, 3); Glee Club (1, 2, 3); Outdoor Club (1, 2).
Oneonta, New York



DOROTHY HELEN CLARK
Scarboro High School
Y. W. C. A. (1, 2); Commuters' Club (3).
"Dot"
Scarboro, Maine



VIRGINIA MAE CLARK
Cape Elizabeth High School
Y. W. C. A. (1, 2, 3); Outdoor Club (1, 2); GREEN AND WHITE (3).
"Gin"
Cape Elizabeth, Maine

RUTH EVELYN CLAY
Mattanawcook Academy
Y. W. C. A. (1, 2, 3); Outdoor Club (1, 2); GREEN AND WHITE (3).
"Ruthie"
Lincoln, Maine

MYRTIS MAE CLOUGH
Lawrence High School
Glee Club (3); Outdoor Club (3); Y. W. C. A. (3).
Lawrence, Mass.

MURIEL ISABELLE COOK
Cornish High School
Y. W. C. A. (1, 2, 3); Outdoor Club (1, 2, 3); Basketball (1, 2, 3).
"Cookie"
Cornish, Maine

RENA LUCILLE CRAGUE
Westbrook High School
Commuters' Club (1, 2, 3).
"Rene"
Westbrook, Maine

ALITA MAE CRANE
Winter Harbor High School
Art Club (1, 2); Dramatic Club (1, 2, 3); Y. W. C. A. (1, 2, 3).
"Al"
Winter Harbor, Maine



CAROLYN FREEMAN CROOKER
Bristol High School
Y. W. C. A. (1, 2, 3); Outdoor Club (1, 2, 3); Lincoln County Club (1, 2, 3); House Committee (3).
Bristol, Maine



CLARICE EVELYN CURTIS
Freeport High School
Y. W. C. A. (1, 2).
"Clare"
Freeport, Maine



MARJORIE IRENE CUTTS
Boothbay Harbor High School
Y. W. C. A. (1, 2, 3); Lincoln County Club (1, 2, 3); Outdoor Club (1, 2, 3).
"Cuttsie"
Boothbay Harbor, Maine



MADELYN SMITH DAGGETT
Wells High School
Outdoor Club (1, 2, 3); York County Club (1, 2, 3); Y. W. C. A. (1, 2, 3); Dramatic Club (3).
"Lyn"
Wells, Maine



MARY EVELINE DODGE
Boothbay Harbor High School
Dramatic Club (1, 2); Glee Club (1, 2); Lincoln County Club (3).
East Boothbay, Maine



LOUISE DOLLIVER
Rockland High School
Dramatic Club (1, 2, 3); Art Club (1, 2); National Honor Society (1, 2, 3); Civic Committee (3).
Rockland, Maine



MARGARET ELISABETH DOW
Stephens High School
National Honor Society (1, 2, 3); Y. W. C. A. (3); Oxford County Club (1, 2, 3).
"Maggie"
Rumford, Maine



CORA MAE DYER
Bridgton High School
Y. W. C. A. (1, 2).
Bridgton, Maine



HELEN EDWARDS
Casco High School
Y. W. C. A. (1, 2, 3); Outdoor Club (1, 2).
Casco, Maine



FRANCES ELIZABETH FOSS
Eliot High School
Y. W. C. A. (1, 2, 3); York County Club (1, 2, 3); Advisory Board of "Oracle" (3); Outdoor Club (1, 2).
"Lib"
Eliot, Maine



GREEN AND WHITE



MAXINE FRANCES GAGNON "Max"
Madawaska Training School Fort Kent, Maine
Aroostook County Club (3); Hockey (3); Archery (3).

THELMA BEATRICE GILMAN "Thel"
Waterboro High School Waterboro, Maine
Commuters' Club (1, 2); Y. W. C. A. (3); Outdoor Club (3).



RUBY EVELYN GINN
Jonesport High School Jonesport, Maine
Y. W. C. A. (1, 2, 3); Washington-Hancock County Club (1, 2, 3); Outdoor Club (1, 2).

RUTH ELAINE GRIFFIN "Griffie"
Haverhill High School Haverhill, Mass.
Massachusetts Club (1, 2, 3); Civic Committee (3); Y. W. C. A. (1, 2).



CELIA NASH GROSS
Waldoboro High School Waldoboro, Maine
Lincoln County Club (1, 2, 3); GREEN AND WHITE (3).

HATTIE EMMA GUPTILL
Waterboro High School Waterboro, Maine
Outdoor Club (1, 2); Track (2).



MARY EDITH HALL
Melrose High School Melrose, Mass.
Y. W. C. A. (1, 2, 3); Civic Committee (1, 2, 3); Glee Club (1, 2); GREEN AND WHITE (3).

MILDRED GRACE HAMOR "Millie"
North Berwick High School North Berwick, Maine
Y. W. C. A. (1, 2, 3); Glee Club (1, 2, 3); House Committee (3).



BARBARA JEANNETTE HARMON "Barb"
Scarboro High School Scarboro, Maine
Civic Committee (1, 2, 3); Y. W. C. A. (1, 2); Basketball (1, 2, 3); GREEN AND WHITE (3).

ROBERTA BAILEY HATHORNE "Bobbie"
Morse High School Wiscasset, Maine
Y. W. C. A. (1, 2, 3); National Honor Society (1, 2, 3); House Committee (3).



ELIZABETH MYRA HAYNES
Richmond High School Richmond, Maine
Glee Club (1, 2, 3); Y. W. C. A. (3); Outdoor Club (3).



ELEANOR MEADE HEBB "Nellie"
Bridgton High School Bridgton, Maine
Outdoor Club (1, 2); Y. W. C. A. (1, 2).



LEONA ALTINE HIGGINS "Snooks"
Hollis High School Hollis, Maine
Commuters' Club (3).



ALICE HILLS "Bobby"
Portland High School Portland, Maine
Commuters' Club (1, 2, 3); Art Club (3).



LUCIA ANITA HINCKLEY "Lou"
Milbridge High School Milbridge, Maine
Glee Club (1, 2, 3); Y. W. C. A. (1, 2, 3); "Oracle" Staff (1, 2); Dramatic Club (1, 2); Editor-in-Chief GREEN AND WHITE (3).



LOUISE COOPER HUNT "Wid"
Newport High School Newport, Maine
Outdoor Club (1, 2); Y. W. C. A. (1, 2).



BARBARA LYDIA HURD "Barb"
North Berwick High School North Berwick, Maine
Dramatic Club (1, 2, 3); Glee Club (1, 2, 3); Y. W. C. A. (1, 2, 3); York County Club (1, 2, 3); GREEN AND WHITE (3).



DOROTHY MAE INGALLS "Dot"
Bridgton High School Bridgton, Maine
Outdoor Club (1, 2); Y. W. C. A. (1, 2).

EDNA MARGARET KEMP "Kempie"
Deering High School Portland, Maine
Outdoor Club (1, 2); Basketball (1, 2); Commuters' Club (3).

WINOLA GERTRUDE KILGORE "Nola"
Gould Academy Bethel, Maine
Y. W. C. A. (1, 2, 3); Oxford County Club (1, 2, 3).



GREEN AND WHITE



AMY STELLA KING *"Aim"*
Kennebunk High School Kennebunk, Maine
Outdoor Club (1, 2); Glee Club (3); Y. W. C. A. (3); York
County Club (3).



MARY EDITH LESLIE *"Ede"*
Sanford High School Sanford, Maine
Y. W. C. A. (1, 2, 3); York County Club (1, 2); Outdoor Club
(1, 2).



EDNA LORAIN LIBBY *"Eddy"*
Standish High School Standish, Maine



PHYLLIS RUTH LIBBY *"Phil"*
Ethan Stone High School Newfield, Maine
Y. W. C. A. (3); Outdoor Club (3).



HAZEL ANTONIA LYNCH
South Portland High School South Portland, Maine
Commuters' Club (1, 2).

PHYLLIS NEOTA MARSHALL *"Phyl"*
Bridgton High School Bridgton, Maine
Y. W. C. A. (1, 2); Outdoor Club (1); House Committee (3).



BERNICE MARIE LADD *"Bern"*
Stephens High School Rumford, Maine
Oxford County Club (1, 2, 3); Y. W. C. A. (1, 2, 3); Outdoor
Club (1, 2, 3).



PHYLLIS ELIZABETH LESLIE *"Phil"*
Traip Academy Kittery, Maine
Y. W. C. A. (1, 2, 3); Glee Club (1, 2, 3); National Honor
Society (2, 3); Outdoor Club (3).



LELIA MOUNTFORT LIBBY
Deering High School Portland, Maine
Glee Club (1, 2, 3); Y. W. C. A. (1, 2, 3); Outdoor Club (1, 2,
3); Orchestra (1, 2, 3).



RITA MAE LINNELL *"Reet"*
Norway High School Norway, Maine
Y. W. C. A. (1, 2, 3); Oxford County Club (1, 2, 3).



GREEN AND WHITE



ARDENA MAY MILLER
Cony High School Augusta, Maine
Art Club (1, 2, 3); Y. W. C. A. (1, 2, 3); GREEN AND WHITE
(3).



FLORENCE ELIZABETH NUNNS *"Flo"*
Kennebunk High School Kennebunk, Maine
Glee Club (1, 2, 3); Civic Committee (1, 2, 3); "Oracle" Staff
(3); Y. W. C. A. (3).



MARION ELIZABETH NUTTING *"Nutty"*
Alfred High School Alfred, Maine
Commuters' Club (1, 2); York County Club (3); Y. W. C. A.
(3).



MARGARET ADELE PALLADINO *"Polly"*
Mansfield High School Mansfield, Mass.
Glee Club (1, 2, 3); Massachusetts Club (1, 2, 3); Dramatic
Club (1, 2, 3).



CHRISTINE MARGUERITE PRINCE
Westbrook High School Westbrook, Maine
Commuters' Club (1, 2, 3).

ANNIE VIOLA PROCTOR *"Ann"*
Windham High School Windham, Maine
Art Club (5); Y. W. C. A. (5); "Oracle" Staff (5).

LOIS ELVIRA PRYOR *"Louse"*
Lincoln Academy Newcastle, Maine
Lincoln County Club (1, 2, 3); Outdoor Club (1, 2, 3); Y. W.
C. A. (1, 2, 3).

MARGARET MAUD REILLY *"Marg"*
Bristol High School Bristol, Maine
Outdoor Club (1, 2, 3); Lincoln County Club (1, 2, 3); Y. W.
C. A. (3).

PAULINE MANSON ROSS *"Polly"*
Gorham High School Gorham, Maine
Basketball (1, 2).

EDITH MAY SAWYER *"Edie May"*
Yarmouth High School Yarmouth, Maine
Y. W. C. A. (1, 2); "Oracle" Staff (1, 2, 3); Outdoor Club
(1, 2).





SHIRLEY ANNA SMART
Traip Academy Kittery, Maine
Y. W. C. A. (1, 2, 3); York County Club (1, 2, 3); Glee Club (3); Athletic Association (3).

CHRYSTAL HAZEL SMITH "Chris"
Washburn High School Washburn, Maine
Commuters' Club (3).



BARBARA WILLIS SNELL "Babs"
Deering High School Portland, Maine
Glee Club (1, 2, 3); Y. W. C. A. (1, 2, 3); "Oracle" Staff (3).

HELEN RUTH STARLING
Deering High School Portland, Maine
"Oracle" Staff (1, 2, 3); Y. W. C. A. (1, 2); Commuters' Club (3).



DOROTHY LOUISE STEEVES "Dot"
Medford High School Medford, Mass.
Dramatic Club (1, 2, 3); Glee Club (1, 2, 3); Y. W. C. A. (1, 2).

FREDA ELSIE STEVENS
Alfred High School Alfred, Maine
Y. W. C. A. (3); Basketball (1, 2, 3); Commuters' Club (1, 2).



MADELINE MARGUERITE SWETT
Gorham High School Gorham, Maine
Glee Club (1, 2, 3).

LILLIAN MABELLE WALLACE "Lil"
Bristol High School Bristol, Maine
Outdoor Club (1, 2, 3); Lincoln County Club (1, 2, 3); House Committee (3); Y. W. C. A. (3).



CORINNE ALTHEA WALTZ "Connie"
Lincoln Academy Damariscotta, Maine
Orchestra (1, 2, 3); Glee Club (1, 2, 3); Y. W. C. A. (1, 2); Civic Committee (3).

BARBARA TRAVIS WEBSTER "Bobbie"
Sanford High School Sanford, Maine
Y. W. C. A. (1, 2); Dramatic Club (3); House Committee (3); Lincoln County Club (3).



RUTH ESTHER WESTON "Bud"
Freeport High School Freeport, Maine
Y. W. C. A. (1, 2, 3); Glee Club (1, 2, 3); Outdoor Club (1, 2).



WILMA ANNIE WYMAN "Wilma"
Bridgton High School Bridgton, Maine
Y. W. C. A. (1, 2, 3).



MARGARET RIDLON "Peggy"
Gorham High School Gorham, Maine
Graduate of Wheaton College, 1931.



MARGARET ARLETTA KIMBALL "Peg"
Hebron Academy Boothbay, Maine
One year at Castine. One year at Gorham.



BEATRICE FARWELL "Bee"
New Gloucester High School New Gloucester, Maine
Dramatic Club (3).



HELEN IRENE ABBOT
Good Will High School Hinckley, Maine
Glee Club (1, 2, 3, 4); Y. W. C. A. (1, 2, 3, 4); Outdoor Club (1, 2); Aroostook County Club (3, 4).



BERNICE KATHERINE BASSETT
Westbrook High School Westbrook, Maine
Commuters' Club (1, 2, 3).



ELEANOR MABEL BEAL
Westbrook High School Westbrook, Maine
Commuters' Club (1, 2, 3).



MILDRED LOUISE BELL "Mim"
Westbrook High School Westbrook, Maine
Commuters' Club (1, 2, 3); Art Club (3).



GREEN AND WHITE



BARBARA BLISS
Newton High School

"Barb"
Newtonville, Mass.

RUTH HERRICK CUMMINGS
Deering High School
Treasurer Junior Class; Commuters' Club (1, 2, 3); Vice-President Girls' Athletic Association (1, 2).

"Ruthie"
Portland, Maine



MARGARET VIOLA DOUGLAS
Westbrook High School
Commuters' Club (1, 2).

"Doug"
Westbrook, Maine

EDITH McDAVID FARNHAM
Cony High School
Junior Soccer (1); Hockey (1); Basketball (1); Athletic Council (1, 2); Y. W. C. A. Cabinet (3).

"Dee"
Augusta, Maine



ELIZABETH FARRINGTON
Deering High School
Basketball (2).

Portland, Maine

MARY LINNEHAN HALEY
Portland High School
Commuters' Club (1, 2, 3); Art Club (3); Class Treasurer (3).

Portland, Maine



ANNA ELLEN HAMLIN
Gardiner High School
Y. W. C. A. (1, 2, President 3, 4); Vice-President Junior Cabinet (2); National Honor Society (2, Secretary-Treasurer 3); Civic Committee (3); "Oracle" Staff (1, 2).

Gardiner, Maine

MELVA GREY KEHOE
Melrose High School
Massachusetts Club (1, 2, 3); Orchestra (1, 2, 3); Glee Club (3, 4).

"Mel"
Melrose, Mass.



EVELYN MAE KIMBALL
Westbrook High School
Commuters' Club (1, 2).

"Ev"
Westbrook, Maine

LOIS ELOISE HARKINS
Waldoboro High School
Y. W. C. A. (1, 2, 3); Lincoln County Club (1, 2, 3); Outdoor Club (1, 2).

Waldoboro, Maine



GREEN AND WHITE



ALENIA EVELYN LAKE
Ellsworth High School
Washington-Hancock County Club (1, 2, 3, 4); Outdoor Club (1, 2, 3); Y. W. C. A. (1, 2, 3).

"Billie"
Ellsworth, Maine

HELEN FRANCES LeSAGE
Braintree High School
Massachusetts Club (1, 2, 3); Outdoor Club (1, 2); Y. W. C. A. (3).

Braintree, Mass.



MARJORIE LIBBY
Brewster Academy
Y. W. C. A. (1, 2, 3); Outdoor Club (1, 2).

"Jerrie"
Wolfeboro, N. H.

DOROTHY LOUISE LITTLEFIELD
North Berwick High School
Glee Club (1, 2, 3); York County Club (1, 2, 3); Outdoor Club (1); Basketball (1); Field Hockey (1); Y. W. C. A. (1, 2, 3).

"Dot"
North Berwick, Maine



MARGARET ELIZABETH MACDONALD
Winslow High School
Dramatic Club (1, 2, 3); House Committee (1, 2, President 3); Y. W. C. A. (1, 2); "Oracle" Board (1, 2); National Honor Society (1, 2, 3); Civic Committee (3); Outdoor Club (1, 2).

"Marge"
Winslow, Maine

PHYLLIS CHARLOTTE MARSTON
Melrose High School
Orchestra (1, 2, 3); Massachusetts Club (1, 2, 3).

"Phil"
Melrose, Mass.



JANET EDITH McCLOUD
Hyde Parke High School
Glee Club (3).

"Jan"
Chicago, Ill.



MYRTLE ELLA ROSE
Denmark High School
Baseball; Basketball; Outdoor Club (1, 2, 3); Oxford County Club (1, 2).

"Myrt"
Denmark, Maine

LILLIAN NAOMA ROSS
West Paris High School
Oxford County Club (1, 2, 3); Outdoor Club (1, 2, 3); Y. W. C. A. (1, 2, 3).

"Lil"
West Paris, Maine





HELEN FISHER SEAVERNS "Bill"
Massachusetts Club (1, 2, 3); Glee Club (1, 2); Outdoor Club (1, 2); Y. W. C. A. (1, 2, 3).

VERA MAY SMALL
Brunswick High School Brunswick, Maine
Glee Club (1, 2, 3); Outdoor Club (1, 2); Y. W. C. A. (1, 2, 3); Dramatic Club (3); Operetta (4).



ARISTEEN CHAPMAN TIMBERLAKE "Teen"
Oak Grove Seminary Vassalboro, Maine
Y. W. C. A. (3, 4).

HELEN CATHERINE TRACY
Sacred Heart High School Weymouth, Mass.
Massachusetts Club (1, 2, 3); Outdoor Club (1, 2); Civic Committee (3); GREEN AND WHITE Board (3); Y. W. C. A. (3).



LORAIN ETHEL WARMAN "Snookie"
Madison High School Madison, Maine
Glee Club (1, 2); Operetta (1); Art Club (3).

DOROTHY MAE WELCH "Pat"
Westbrook High School Westbrook, Maine
Commuters' Club (1, 2).



HELEN ESTELLE WHITE "Honey"
Vanceboro High School Vanceboro, Maine
Outdoor Club (1, 2); Y. W. C. A. (3).

DOROTHY ETHEL YOUNG "Dottie"
Traip Academy Kittery, Maine
York County Club (1, 2, 3); Y. W. C. A. (1, 2, 3); Glee Club (1, 2, 3); Operetta.



CATHERINE LORETTA ZWICKER "Kaye"
Brownville High School Brownville, Maine
Commuters' Club (1, 2, 3).

FLORENCE BENTON ALLEN "Flo"
Deering High School Portland, Maine
Art Club (3).

MARY WOODBURY DANA
Dana Hall School Wellesley, Mass.



Louis Jensen
President



Philip Bunker
Vice-President



Reuben Smith
Secretary



Daniel Wight
Treasurer

MID-SENIORS

Calvin Coolidge once said, "The school is not the ending, but only the beginning of an education." During our two years at Normal School we have found this to be very true. We have grown in our ideas and formed new, different opinions concerning subjects we thought we had fully devoured.

Growth—this is the ultimate means of a beginning to an end. Growth! Expansion! Our two years here have given us the desirable background to begin and further our education when we leave here. Thus we continue throughout our lives, always eager to grow and expand, because as it is put so aptly by the Honorable Payson Smith, "Education is what we have left after we have forgotten what we have learned."



MID-SENIORS, JUNIOR HIGH



BURNETTE LOUISE BAILEY "Bunny"
Morse High School Woolwich, Maine
Basketball (1, 2, 3); Y. W. C. A. (1, 2, 3); Outdoor Club (1, 2, 3); House Committee (3).



MARGUERITE MARY BOYCE "Wig"
Portland High School Portland, Maine
Y. W. C. A. (1, 2, 3); Outdoor Club (1, 2, 3); Civic Committee (3); "Oracle" Staff (3).



RICHARD WESLEY CLIFFORD "Dick"
Vinalhaven High School Vinalhaven, Maine
Baseball (1, 2).



BERNICE ETHEL DICKERSON
Biddeford High School Biddeford, Maine
Y. W. C. A. (1, 2, 3); York County Club (1, 2, 3); Outdoor Club (1, 2, 3).



PHILIP MARSTON GANNON "Phil"
Beverly High School Beverly, Mass.
Lambda Pi Sigma (1, 2, 3); Y. M. C. A. (1, 2, 3); Glee Club (1, 2, 3); "Oracle" Staff (3).

ELIZABETH GILES "Giles"
Woburn High School Woburn, Mass.
Massachusetts Club (1, 2, 3); "Oracle" Staff (1, 2); Y. W. C. A. (1, 2).



RUTH ARLENE BEAL
South Portland High School South Portland, Maine
"Oracle" Staff (1, 2).



RUTH TOWNSEND BRALEY
Gorham High School Gorham, Maine
Commuters' Club (1, 2).



EDNA MAE DELANEY
New Bedford High School New Bedford, Mass.
Y. W. C. A. (1, 2, 3); Dramatic Club (1, 2, 3); Massachusetts Club (1, 2, 3); Outdoor Club (1, 2, 3).



DAVID WHITING GALLISON "Dave"
Higgins Classical Institute Charleston, Maine
Basketball (1, 2, 3); Cross Country (1, 3); Baseball (2).



KATHRYN GROEZINGER "K"
Presque Isle High School Presque Isle, Maine
Dramatic Club (1, 2, 3); Glee Club (1, 2, 3); Y. W. C. A. (3); Basketball (1, 2).



LOUIS BALSTAD JENSEN
Westbrook High School Westbrook, Maine
Lambda Pi Sigma (1, 2, 3); Basketball (1, 2, 3); "G" Club (1, 2, 3); Baseball (1, 2); GREEN AND WHITE (3).



NELSON COLLINS LELAND "Nel"
Mount Desert High School Mount Desert, Maine
Lambda Pi Sigma (1, 2, 3); Glee Club (1, 2, 3); Y. M. C. A. (1, 2, 3); Civic Committee (3).



ERNEST LEROY LIBBY "Lib"
Pennell Institute Gray, Maine
Alpha Lambda Beta (1, 2, 3); Y. M. C. A. (1, 2, 3); Orchestra (1, 2, 3); Glee Club (1, 2, 3); Civic Committee (3); GREEN AND WHITE (3).



ELIZABETH ROWE MERRILL "Lib"
Pennell Institute Gray, Maine
Orchestra (1, 2, 3); Y. W. C. A. (1, 2, 3); Glee Club (3); GREEN AND WHITE (3).

PAUL WARREN MOODY "Skip"
Gorham High School Gorham, Maine
Commuters' Club (1, 2); Athletic Council (1, 2); Basketball (3); GREEN AND WHITE (3).



CLAYTON ELSMERE HARTFORD "Clate"
Buxton High School Buxton, Maine
Commuters' Club (1, 2).



BARBARA JEAN LANGDON "Jean"
Gorham High School Gorham, Maine
Dramatic Club (1, 2); Outdoor Club (1, 2, 3); GREEN AND WHITE (3).



RICHARD DANA LOPEZ "Dick"
Westbrook High School Westbrook, Maine
Commuters' Club (1, 2, 3).



MARY BARBARA MCCARTHY "Bab"
Cathedral High School Portland, Maine
Commuters' Club (1, 2, 3).





MARJORIE ALBERTA NASH "Marj"
Lincoln Academy Newcastle, Maine
Y. W. C. A. (1, 2, 3); House Committee (2); Outdoor Club (1, 2, 3); Basketball (1, 2, 3).

MILTON HENRY NELSON "Milt"
Westbrook High School Westbrook, Maine
Lambda Pi Sigma (1, 2, 3).



ESTELLA ALTHEA NICHOLS "Nick"
Windham High School Windham, Maine
Y. W. C. A. (1, 2, 3); Basketball (1, 2, 3); Track (1, 2); Dramatic Club (3).

SEBINA HELEN REGINA "Sib"
Biddeford High School Biddeford, Maine
Y. W. C. A. (1, 2); Glee Club (1, 2); Outdoor Club (1, 2, 3); Basketball (3).



FRANCES ENDORA SMITH
Portland High School Portland, Maine
Commuters' Club (1, 2, 3); "Oracle" Staff (3).

GEORGE HENRY SMITH
Hollis High School Hollis, Maine
Commuters' Club (1, 2, 3); GREEN AND WHITE (3).



SELMA STOCKBRIDGE "Sally"
Portland High School Portland, Maine
Commuters' Club (1, 2, 3); "Oracle" Staff (3).

DANIEL WESTON SNOW "Danny"
Scarboro High School Scarboro, Maine
Basketball (1, 2, 3); Baseball (2); Lambda Pi Sigma (1, 2, 3).



ARDEN HARVEY TARBOX "Red"
Hollis High School Hollis, Maine

WINIFRED RITA THORNTON "Winnie"
Cathedral High School Portland, Maine
Civic Committee (1, 2).



KENNETH J. TWITCHELL "Ken"
Newport High School Newport, Maine
Cross Country (1, 3); Y. M. C. A. (1, 2, 3); "G" Club (1, 2, 3); Dramatic Club (1, 2, 3); Glee Club (1, 2, 3); Civic Committee (3).



BARBARA WAKEFIELD "Barby"
Portland High School Portland, Maine
Outdoor Club (1, 2); Y. W. C. A. (1, 2); York County Club (3).



RAYMOND EVERETT WALKER
Fryeburg Academy Fryeburg, Maine
Lambda Pi Sigma (1, 2, 3); Basketball (1, 2); "G" Club (1, 2, 3); Baseball (2); Glee Club (1, 2).



VICTOR LAFFIN WALKER "Vic"
Westbrook High School Westbrook, Maine
Class President (1, 2); Civic Committee (1, 2); GREEN AND WHITE (3).



HAROLD WILLIAM WEST
Westbrook High School Westbrook, Maine
Lambda Pi Sigma (3).



FRANCES VERONA CORNELL "Fran"
Westbrook High School Westbrook, Maine
Commuters' Club (1, 2, 3); Glee Club (1, 2); Art Club (1, 2).



PAUL ELDRED BOOTHBY
Edward Little High School Auburn, Maine
Basketball (1, 2).



PHILIP BARBOUR BUNKER "Phil"
Brewer High School Brewer, Maine



MID-SENIORS, INDUSTRIAL ARTS





ERIC A. CHANDLER
Berlin High School Berlin, New Hampshire
GREEN AND WHITE (3).



FRANKLIN EVELITH HANNAFORD "Hank"
Westbrook High School Westbrook, Maine
Commuters' Club (1, 2); Lambda Pi Sigma (1, 2, 3).



ARTHUR E. PRESCOTT "Red"
Westbrook High School Westbrook, Maine
Commuters' Club (1, 2); Baseball (2); Alpha Lambda Beta (1, 2, 3).



MERVIN EVERETT SHAIN "Merv"
St. Croix High School Woodland, Maine
Glee Club (1, 2); Y. M. C. A. (1, 2, 3); Baseball (2); Alpha Lambda Beta (3).



REUBEN FAIRBROTHER SMITH "Bud"
Anson Academy North Anson, Maine
Lambda Pi Sigma (1, 2, 3); Glee Club (1, 2, 3); Y. M. C. A. (1, 2); Cross Country (3); GREEN AND WHITE (3).

PHILIP BRADBURY TARBOX "Red"
Westbrook High School Westbrook, Maine
Commuters' Club (1, 2, 3); Alpha Lambda Beta (1, 2, 3).

DANIEL MORSE WIGHT "Dan"
Gould Academy Bethel, Maine
Orchestra (1, 2, 3); Glee Club (1, 2, 3); Basketball (1, 2, 3).

EARLE FREDERICK WILDES "Wildes"
Milton High School Milton, Mass.

LAURENT YOUNG "Babe"
Sanford High School Sanford, Maine
Commuters' Club (1, 2, 3); Lambda Pi Sigma (1, 2, 3).



JUNIORS

At the bottom of the hill, the traveler knows very little of the journey which is before him. He is not aware of the many paths through which he must pass. It is not a blind journey, however, for along the way the traveler, who has his goal definitely in view, will find friendly guards and directing guideposts which have been stationed there to keep him in the right path.

The Juniors have begun climbing up the greatest of all hills, the hill of understanding and knowledge. Thus far, they have been guided and directed by the willingness and untiring efforts of the faculty members, and are greatly indebted to them for their help.

As each day draws to its close, the sometimes weary travelers look back over the trail with a feeling of satisfaction because of the progress of the day. So, the Juniors pushing upward to a better understanding and knowledge will look back over their first year spent at the Gorham Normal School with satisfaction in their hearts. May the years to follow find them still nearer the desired goal.

Eunice Reed.

OFFICERS

President, CHARLES WAMESTER

Vice-President, EUNICE REED

Secretary, ANNE RUBINSKY

Treasurer, RUTH STAPLES

JUNIOR C1



C1—A

Top row: E. Brock, F. Atherton, C. Bailey, M. Colby, M. Clark.
Middle row: R. Bennett, E. Corey, F. Boulter, H. Abbott, O. Clark, C. Blake.
Bottom row: E. Cashman, M. Callan, H. Bruce, M. Brown, E. Brown, A. Alexander, M. Bickford.



C1—B

Top row: B. Dunton, I. Doughty, C. DeVane, L. Dunton, E. Cole.
Middle row: M. Frost, P. Elwell, S. Fitzmorris, A. Cotter, A. Gardiner.
Bottom row: M. Earle, T. Crane, B. Cook, C. Floyd, P. Ellis, C. Davis, D. Frost.

JUNIOR C2



C2—A

Top row: R. Hooper, E. Hill, F. Graves, B. Howard, E. Gates.
Middle row: E. Giovino, V. Hanna, E. Giovino, B. Gerry, S. Hicks.
Bottom row: H. Gilpatrick, A. Hinds, M. Goodwin, E. Holbrook, H. Haraden, M. Huse, E. Hall.



C2—B

Top row: M. Kennedy, H. Johnson, N. Marsh, D. Knight, N. Lothrop, A. McMillan.
Middle row: M. Palmer, A. Lowell, A. King, L. Manchester, M. Loring, E. Kane, N. King.
Bottom row: B. Kinney, M. James, P. Huston, H. Lidback, E. Johnson, S. Jensen, N. Leeman.

JUNIOR C3



C3-A

Top row: L. Oulton, M. Parkman, V. Morrill.
Middle row: D. Packard, M. MacIntyre, H. Johnson, R. McCloud.
Bottom row: P. McGraw, S. McAllister, N. Osier, T. Moores, V. Moores, E. Martin.



C3-B

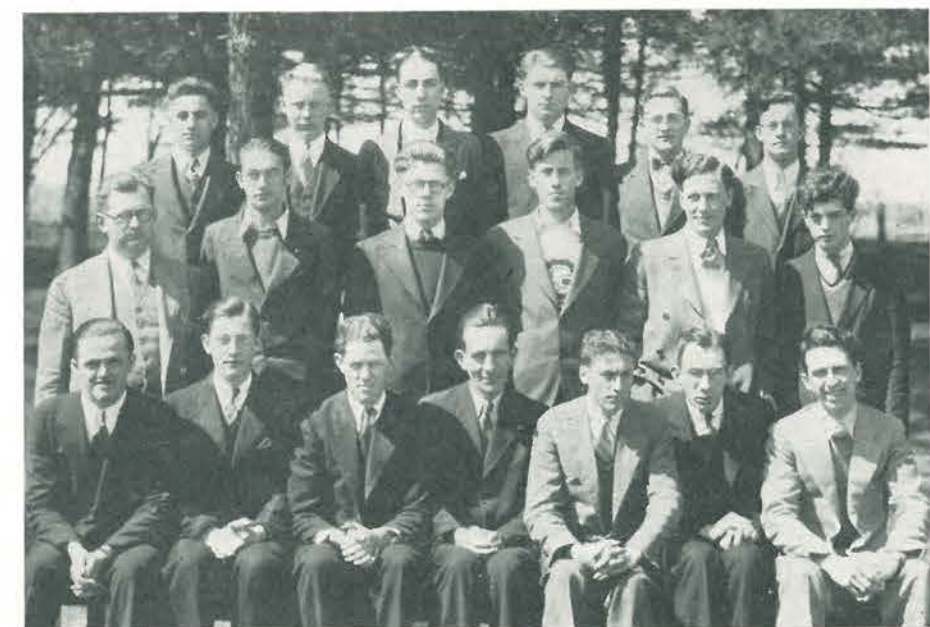
Top row: L. Rose, E. Reed, F. Remillard, W. Smith, M. Soper, K. Ricker.
Middle row: A. Rubinsky, M. Sleeper, E. Smith, A. Richardson, R. Pitts.
Bottom row: H. Scott, B. Soper, M. Pratt, M. Perkins, A. Renell, A. Scott, M. Porello.

JUNIOR C4



C4-A

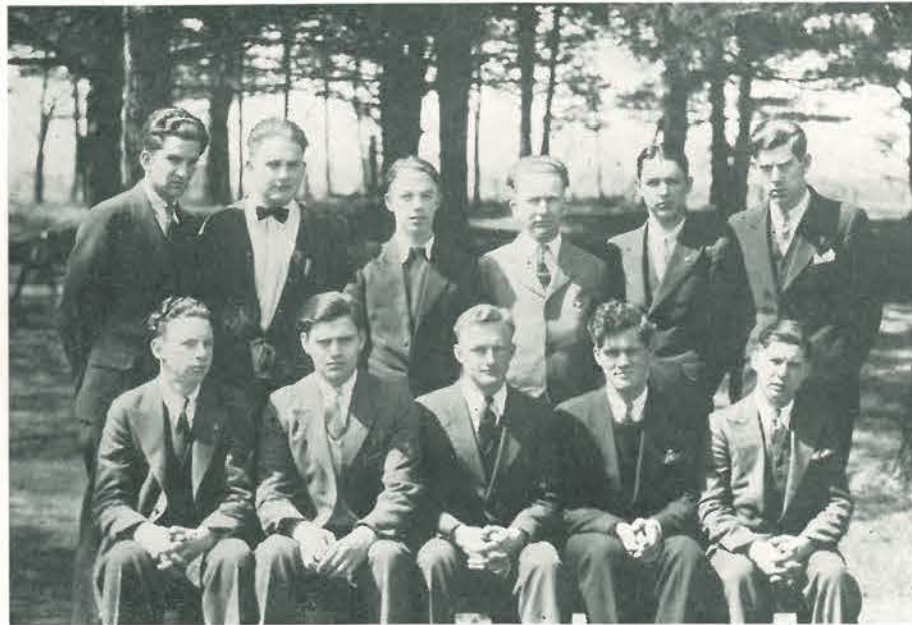
Top row: M. Tibbetts, C. Tollefson, H. Tyler, R. Staples.
Middle row: B. Sylvester, C. Stevens, F. Huse, B. Warren, N. Williston.
Bottom row: A. Turner, M. Tompkins, M. Sturgis, V. Staples, L. Wardwell.



C4-B

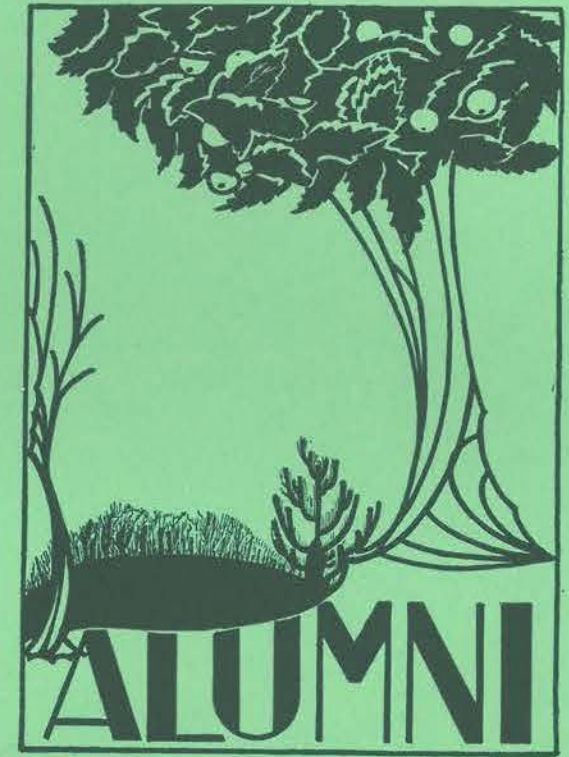
Top row: R. Bowman, J. Pillsbury, C. Kimball, W. O'Brien, E. Achorn, C. Watts.
Middle row: E. Sterling, R. Hallett, K. Crockett, R. Morton, K. Jordan, F. Tupper.
Bottom row: F. White, C. Ronco, L. Marston, A. Norgaard, M. Rossnagel, S. McAllister, W. Herbert.

JUNIOR C5



C5

Top row: M. Bean, J. Abbott, E. Huff, L. Bartlett, F. Wardwell, W. Hart.
Bottom row: P. Chapman, C. Wamester, N. Plaisted, K. Grover, R. W. Perkins.



GORHAM NORMAL SCHOOL ALUMNI ASSOCIATION

President, LOIS PIKE

Vice-President, HAYDEN L. V. ANDERSON

Recording Secretary, GEORGIANA C. HAYES

Corresponding Secretary and Treasurer, GLADYS L. KIMBALL

Auditor, NORMA THURSTON

SOUTHERN NEW ENGLAND BRANCH OF THE GORHAM NORMAL
SCHOOL ALUMNI

President, IVA V. LUTZ

Vice-President, EDWINNA ROBB

Secretary, ALICE PENNELL

Treasurer, TILLA LAWRENCE

PORTLAND AND SOUTH PORTLAND BRANCH OF GORHAM
NORMAL SCHOOL ALUMNI

President, MAY FISK RICE

First Vice-President, MARY HENNESSY

Second Vice-President, HILDA MCCRUM HOGEN

Third Vice-President, FLORA THORNDIKE THOMPSON

Fourth Vice-President, MARY RIGO

Secretary, HARRIET SHAW LANG

Corresponding Secretary, MILDRED CLARKE ANDERSON

Treasurer, HELEN SCHWARTZ



Robie Hall - Room 3 - 1905

Old Fort Hill House

Study Table - 1905

Origin of the Dramatic Club

Baby Wampas

Old Tennis Court

Robie Hall Steps

Our Gang

Peek-a-Boo

-25 YEARS AGO

To All Fellow Alumni, Greetings.

Each one who has been a student at Gorham Normal School has his memories of life there, pleasant memories of life spent in a beautiful spot, among friendly comrades, and loyal teachers. Whether we entered in the eighteen eighties or in the nineteen thirties, those memories center around the same spot and join us together. There we learned the firm discipline of required tasks, steadying, shaping, and developing our futures; there we developed certain standards of work so firmly that they remain with us today; there we formed certain strong friendships so woven into the fabric of our lives that the pattern will remain forever; there was planted within us the seed of stimulating ambition which has carried us forward; there was opened to us the door of a wider, richer world. It was there we received training not only to teach but to live.

The great teachers of the world have been those who taught not by precept nor from the printed book, but by the examples of their lives. To teach others is to touch their lives by your loves, your admiration, your pleasures, your ambitions, your enthusiasms, and your wisdom. Thus do I remember my loyal teachers at Gorham Normal School, Dr. Russell, Miss Halliday, Miss Stone, Miss Keene, Miss Hastings, and Mr. Woodward. To me they are Gorham Normal School. Greater than all the lessons in methods were the other things that I learned from them, which have helped me as I have continued in the work.

To Miss Halliday, to whom this year book is affectionately dedicated by every alumnus, I would express my sincere and ever-increasing appreciation that her life touched mine and that many times have I been helped by her words, "Don't cross a bridge until you come to it, but lay the paving stones along the way."

The Southern New England Branch of the Gorham Normal School Alumni Association extends to all alumni and to the members of the class of nineteen hundred thirty-three, who may be located in this vicinity next year, a cordial invitation to join our association and to share with us in paying tribute to our Alma Mater.

Have faith in Gorham Normal, there she stands today,
Beloved by all our hearts, could each but have its say;
Temple of learning standing on the hill;
Portals of wisdom swinging open still.

Have faith in Gorham Normal; hold the vision high,
Loyalty, Fidelity,—never let them die;
True to Alma Mater, though far we may stray,
We pledge to thee our firm support, G. N. S. for aye.

*Iva V. Lutz, '20,
President.*

Greetings:

Normal Hill seems almost a distant recollection until one stops to reminisce. Then the music, the fun, the cramming for exams, even the excitement of the May Ball, all seem as yesterday. Yet the intervening time would show itself, were we to go back and try to be what we were three years ago—happy, eager graduates of 1930—for we have grown since then and are still growing. Instead of Miss Halliday, Miss Jordan and the other teachers, experience comprises the only one. We thought of graduation as an ending, but the ending is just the beginning.

Charlotte Cates, '30.

"The lofty oak from a small acorn grows."

Does every acorn develop into a mighty oak? Only the acorn with a sound heart, dropped into fertile soil, watered by winter snows and summer showers, flooded with sunshine and buffeted by raging winds, will produce in time a monarch oak.

It is the height of the tree and its spreading branches that charm us, yet it could not be so without its roots. They are life giving.

We, who love the Gorham Normal School, know that at its beginning it had a "heart to resolve, a head to contrive, and a hand to execute" in our Pater. We know that its environment was ideal for growth—set on a hilltop in one of New England's prettiest villages, with the mountains, the sea, and Maine's metropolis on its horizon.

In these later years, the faculty with its strong leadership, has supplied the "one exclusive sign of knowledge—the power of teaching."

To this faculty in September, 1894, came Katharine Halliday. She was "gentle to hear and kindly to judge." She could teach because she loved her task and she suggested and inspired pupils to wish to teach.

As the years went by and the Gorham Normal School grew in numbers and in influence, Miss Halliday's task became greater, her influence in the educational and spiritual life of the student broader. She kept pace with the growth of the school. Along with her history and her literature, she taught that happiness is not the end of life but that character is; that character is higher than intellect.

It always seemed as though she said, "If I can put one touch of a rosy sunset into the life of a student, I shall feel that I have worked with God."

We love her for those qualities which made her not only a teacher but a friend.

Cora Dillingham Roberts, '95.

Last summer, as I stood looking over the beautiful Gorham campus, marveling at its transformation, Dr. Russell must have read my mind, for what he said to me was this: "Can you recall the days before these trees were here?" Swiftly my mind went back over the years to my first coming. The trees looked very small and scattered then, and of the buildings, only Corthell and Robie Halls were in being. As the trees have grown, so have the buildings in number—the principal's charming house, East Hall, Russell Hall, the new training school over the way—and, too, the faculty has increased to match the ever-rising numbers of the students, and the variety of courses has been increased to meet the demands of the times. That new training school, for instance, was built to provide opportunities to teach in every grade from kindergarten to junior high. How great the growth has been in things seen! Greater, we trust, has it been in things not seen, in the spirit that makes a school worth while, in influence growing like the elms ever wider spreading, deeper rooted.

In all these years of growth, no one has more delighted in it, no one given more of herself to it or made a deeper impression on the minds and hearts of her pupils than the beloved teacher to whom this edition of the GREEN AND WHITE is dedicated—Miss Katharine Halliday.

Lou M. Buker.

Dear Friends:

It gives me a queer feeling to be asked to contribute to the "Alumni Section" of the GREEN AND WHITE, but I am glad to have lived through the experiences that make it possible for me to be ranked as one of that organization.

Certainly it was very fitting to dedicate the year book to Miss Halliday when it bears the theme of "Growth." No one can fully realize just how much that quiet, lovable teacher contributed to the betterment of the school, educationally and spiritually. Her cheery, persevering presence will be missed in the halls of Gorham Normal.

I am at present teaching in a rural school. Seventeen pupils in nine grades keep one busy. It also presents seventeen opportunities for bettering the world. I have discovered that there is a vast amount of difference between theory and practice. I firmly believe, however, that the theories should never be abandoned.

I am glad for a chance to send my greetings to my friends at Gorham. I wish them all a chance to prove what they can do in their chosen field of endeavor.

Sincerely,

Marjorie Moody, '32.

Many of the Alumni will be interested to hear that Miss Marguerite Greene of the Class of 1909 taught from September, 1930, to June, 1932, in Henry Ford's unique school at Dearborn, Michigan. This is the original building in which Mr. Ford received his early education and is typical of the American Village School of three-quarters of a century ago. An illustration of its quaint appointments may be seen in the old style stove used for heating, the wooden benches, and the quaint coach which meets the teachers each morning at the village gate.

Agnes E. Sanborn, '01.

"Old Gorham" means much to me. The association, both with the students and faculty, the enchantment of its setting among the trees on the hill, the true and lasting friendships formed, and the many incidents which the receding years only magnify.

We rise to this toast:
To the school we love most,
To its teachers, its classrooms and halls,
To its campus and nooks,
To its library and books,
To its buildings with vine-covered walls.
This toast of ought eight
That our love ne'er abate,
That for Gorham 'twill grow with each year;
Loving thoughts are enshrined,
Loving hearts are entwined
With memories we all hold so dear.

Theo Wilson Lary, '08.

A '95 ALUMNUS RETURNS IN 1932

"What would our ancestors say if they could come back?" In some degree I had this experience when I stood on Normal Hill last June for the first time since my graduation in '95.

Memory told me that G. N. S. was the front half of Corthell Hall, the only building on the hilltop, that it housed assembly hall, classrooms and the "model" school, and, with a staff of exceptional teachers, sent into the educational field twice each year students well grounded in the teaching technique. I recalled the beautiful maple-bordered path we followed to the dormitory, once the old "Seminary," the hard work, the rigid discipline, the simple pleasures, the red letter days of a Shakespearean play or pageant, and the joy of intimate association with the teachers who were all in all to us.

What my eyes saw as I stood on the hilltop was so different it was almost beyond belief. I found Corthell Hall almost twice its original size, with adequate classrooms; Robie Hall and East Hall, making residence comfortable and pleasant for the girls; the Principal's beautiful home; Russell Hall, a lasting memorial to the ever-faithful Principal, Dr. Russell, with its opportunities for physical education and recreation; Academy Hall and the brick shop in the yard, embracing the Industrial Arts; and at the foot of the hill, where our dormitory stood, a well-equipped practice school. Of course, it has been a gradual change, but to me it seemed that some magic wand had been waved over the hilltop.

And what of outside activities? In place of "candy pulls," "socials," and "sings," I found well organized County, Art, Dramatic, Music, and Athletic Clubs; Religious Societies and Fraternities; contributing to the happiness of the students and developing them in poise and leadership.

With a faculty increased from eight to thirty-four, and a plant of such proportions, G. N. S. is, as it always has been, prepared to take its rightful place in professional education, and the Pater's vision has surely been realized.

This remarkable development has taken place during Miss Halliday's connection with the school, and every alumnus will be delighted that her many years of devoted service are to be recognized by the dedication of the 1933 year book to her. I was a member of her first class, and can speak with feeling of her ability and understanding heart, and I am sure that down through the years, the girls are deeply thankful for the privilege of living with such a woman.

Here's to the school that has always been ahead of the times.
Here's to the spirit of G. N. S.

Edwinna Robb, '95.



AS WE WERE IN 1900



When I recall my years at Gorham Normal School, various pictures come to my mind. I am going to describe a few of them, to remind the older Alumni of the "good old times," and perhaps to interest or amuse the later generation.

Who can forget the long walk from Mosher's Corner, when you had missed the train? (The electrics ran no farther than that, and there were no busses or hitch hiking.)

Then there were the fire drills, when the companies from all floors in Robie Hall were called in the wee small hours of the night to fight an imaginary blaze, and the commands of Companies 1, 2 and 3 could be heard all over the building.

The students now have their May Balls, but we had parties instead. Some of us will never forget my "Cobb-webb party" that sorely displeased Mr. Corthell, and how the webbs came down more quickly than they were put up.

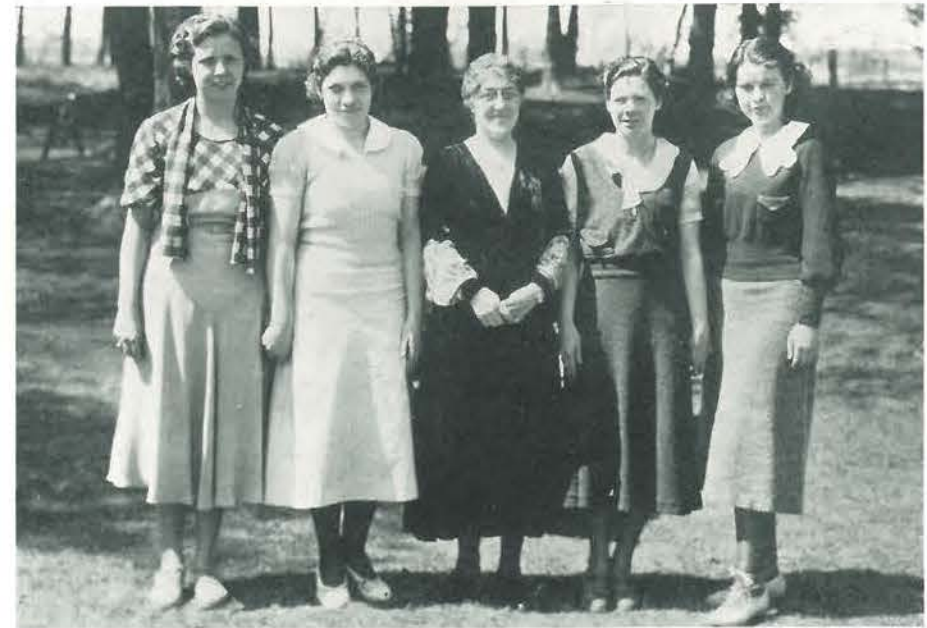
One of the outstanding events of the whole year was the public examination, when fond parents, superintendents and townspeople sat in judgment upon us as prospective teachers. This exhibition program usually ended with a special number by the Physical Training department. I can see them now presenting the long wand drill, a dozen girls or so, dressed in sweeping black skirts, white shirt waists and black bow ties. This picture recalls to me what Miss Stone always said in drilling us,—“Try to think of something directly over the middle of the top of the head—something you can't reach—*Stretch for it.*”

The memories are many and dear and as Sara Teasdale has said—

“Better than the minting
Of a gold-crowned king
Is the safe kept memory
Of a lovely thing.”

Charlotte Parsons Collins, '00.





J. Tapley, W. Lamb, Miss Jordan, R. Jackins, M. MacDonald.

HOUSE COMMITTEE

The student government of Gorham Normal School is proud of the spirit of helpfulness, coöperation, service and personal responsibility that is maintained by the girls in the dormitories throughout the school year.

The House Committee, composed of nine members, a president and vice-president, is elected by the student council to supervise the dormitories. This committee, which is helped, advised and guided by Miss Jordan, Dean of Women, meets weekly with her to discuss plans to improve dormitory life.

Several social functions are sponsored by the House Committee during the school year. At the Hallowe'en Party, held in Russell Hall, strange characters were present and an entertainment was given. Christmas was celebrated by an entertainment in Center, in which the hidden talent of many of our friends was displayed. Instead of the usual toy gifts later given to the Express Santa Claus in Portland, money was given for the poor and needy in Gorham.



Top row: J. Abbott, M. Bean, C. Allen, N. Leland, J. Luiz, L. Abbott, W. Cragin, M. Moulton, Mr. Packard.
 Middle row: V. Scott, C. Waltz, H. Abbott, L. Dolliver, M. Hall, M. MacDonald, H. Tracy, M. Soper, E. Reed.
 Bottom row: B. Harmon, E. Huntoon, G. Porter, Miss Hastings, D. Marr, Miss Wood, E. Brown, S. Hicks.

THE CIVIC COMMITTEE

This organization, entirely representative of the student body, with three faculty members as advisors, has as its aim the promotion of the happiness and welfare of the students. Any projects which tend to fulfill this aim are presented to and discussed by this group. Thus many of the most important activities carried out by the students are done so under the supervision of this committee.

This year among their outstanding accomplishments were the Superintendents' Day, the sending of two delegates, Miss Doris Marr and Mr. Louis Jensen, to the New York Convention, and special chapel exercises.

The Civic Committee has in addition this year introduced a Receiving Committee, whose duty it is to conduct parents and friends of the student body throughout the buildings on our campus.

At the present time the Civic Committee is working on plans whereby a permanent fund for the sending of delegates to the New York Convention may be established. Another plan soon to be put in motion by this group is the founding of a Book Exchange Committee, a much-needed organization on our campus.



Top row: M. Cook, P. Elwell, A. Richardson, M. Tibbetts.
 Middle row: L. Marston, A. Rubinsky, P. Huston, A. Scott, M. Haley, H. Scott, E. Sterling.
 Bottom row: M. Bell, A. Turner, Miss Wihry, N. Williston, M. Soper, A. Miller.

ART CLUB

One of the most prominent clubs of the school is the Art Club, the purpose of which is to bring together students who wish to study art more thoroughly.

This year the Art Club has taken up charcoal drawing and the fashioning of jewelry.

In December, under the direction of Miss Wihry and Miss Andrews, the Art Club prepared and presented for the enjoyment of the school an Evening of Art and Music. From the proceeds of this entertainment a plaque of the Madonna and the Child was presented to the Gorham Normal School. An exhibition of Madonna pictures and one of Japanese prints was also given.

This year the Art Club has been very successful in its undertakings through the interest of its members and the guidance of Miss Wihry.

OFFICERS

President, AUDREY TURNER
Vice-President, NORMA WILLISTON
Secretary, MARIE SOPER



Top row: R. Clay, R. Linnell, M. Hall, M. Dow, E. Farnham.
Bottom row: A. Miller, D. Marr, D. Berry, Miss Upton, A. Hamlin, V. Clark.

Y. W. C. A.

Our Y. W. C. A., like other similar organizations all over the world, has as its purpose—"to unite in the desire to live a full and creative life through a growing knowledge of God; we are determined to make this life possible for all other people, and we seek to understand Jesus and to follow Him." In all activities we undertake and all that we do, the members of the "Y" seek to carry out this great purpose.

Each week there is a meeting conducted by students or faculty members with outside speakers. These gatherings have grown to mean a great deal in the lives of our girls. Activities carried out during the year are a means of raising funds to send delegates to Camp Maqua.

We strive to have all the girls in school interested in "Y" and make our organization a valuable part of the larger association all over the world.

OFFICERS

President, ANNA HAMLIN
Vice-President, DOROTHY BERRY
Secretary, VIRGINIA CLARK
Treasurer, DORIS MARR



Top row: L. Bartlett, C. Allen, L. Young, N. Plaisted, P. Boothby, R. Smith.
Middle row: M. Bean, P. Chapman, D. Wight, C. Warmester, W. Hart, R. Hallett, C. Ronco.
Bottom row: R. Smith, M. Moulton, E. Tobey, Mr. Packard, A. McSorley, B. Rawnsley.

Y. M. C. A.

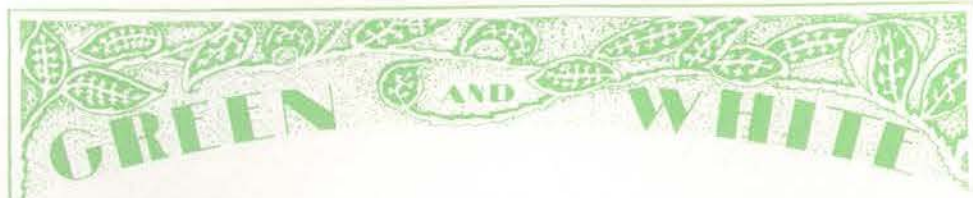
The Y. M. C. A. meets every week in a social study of the life of Christ. These meetings are supervised by various members. They have promoted Christian fellowship by donating to the Evening Express Santa Claus Fund. They have also sponsored a picture-lecture entertainment, at which stereopticon slides accompanied a lecture on the Life of Christ, under the direction of the Portland Branch of the Volunteers of America.

The Faculty Party, one of the large events of the school year, is an annual project of the Y. M. C. A.

We extend a cordial invitation to any non-members of G. N. S. to attend one of our meetings and see for themselves if it would not be worth their while to belong to our organization.

OFFICERS

President, ANDREW MCSORLEY
Vice-President, LEONARD CURTIS
Secretary, KENNETH TWITCHELL
Treasurer, MAXWELL MOULTON
Chaplain, KERMIT GROVER



Top row: D. Gallison, A. Lake, A. Crane, M. Shain.
Middle row: R. Hooper, E. Kane, M. MacIntyre, N. Leland, H. Johnson, E. Hill, L. Hinckley.
Bottom row: R. Ginn, H. Tyler, H. Haraden, Miss Jencks, T. Crane, A. Alexander, S. Fitzmorris.

WASHINGTON-HANCOCK COUNTY CLUB

The Washington-Hancock County Club strives to bring together all members of this county for further acquaintance and understanding.

We try to encourage and aid in developing, in the members, such desirable qualities as sincerity, loyalty, friendship, thoughtfulness, genuineness, courtesy, reverence, sociability and honor.

Our club, the first club of its kind to be organized at Gorham Normal School, is growing each year and becoming of more value, not only to its own members, but to the school as a whole.

Among the social events sponsored by us each year are a big Fall Hop in Center, parties of various kinds throughout the year, and a wienie roast in the spring. Many interesting and worthwhile meetings are held during the year.

May our club continue to grow both in membership and in moral value!

OFFICERS

President, DAVID GALLISON
Vice-President, HARRIET TYLER
Secretary, HELEN HARADEN
Treasurer, THELMA CRANE



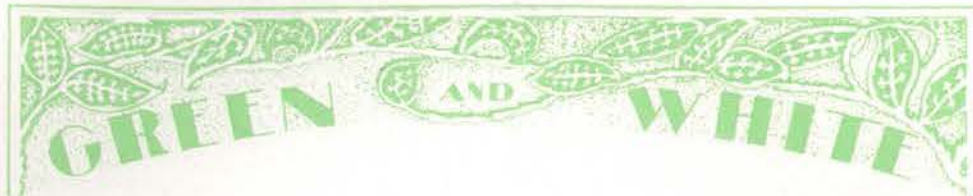
Top row: G. Smith, E. Cote, C. Kimball, T. Abbott, C. Allen, C. Watts.
Middle row: B. Rawnsley, H. Bedell, B. Webster, M. Nutting, O. Clark, D. Berry, K. Grover.
Bottom row: F. Stevens, M. Earle, D. Littlefield, E. Syphers, Miss Lord, M. Hamor, M. Daggett.

YORK COUNTY CLUB

The York County Club, one of the largest county clubs of the school, is a social organization. This feature alone makes it a very worthwhile organization, since it brings together all those students and teachers who live in York County. Several activities of interest are sponsored during the year, which not only help the club members to become better acquainted but bring them into closer touch with members of the various clubs. The hearty spirit of coöperation of York County students has helped to make this club a success.

OFFICERS

President, ELIZABETH SYPHERS
Secretary and Treasurer, SHIRLEY SMART



Top row: M. Bickford, M. Nash, C. Waltz, L. Harkins, M. Dodge, V. Hanna, N. Osier, B. Dunton.
Bottom row: C. Gross, M. Cutts, Miss Keene, C. Crooker, M. Reilly, L. Wallace, L. Prior.

LINCOLN COUNTY CLUB

The purpose of this club is to promote social activity and to create a more home-like atmosphere for the students attending Gorham Normal School from Lincoln County.

The meetings of the club are held on the second and fourth Tuesdays of each month to provide entertainment and recreation for its members, thereby developing and encouraging a more friendly feeling among the students from the various sections of Lincoln County.

Aside from the regular social meetings of the club, several entertainments have been presented during the year, including a party in Center and a picnic, to which other members of the school were cordially invited to attend. Because of these enjoyable club meetings, many pleasant memories have been added to those which will always be associated with Gorham Normal School.

OFFICERS

President, CAROLYN CROOKER
Vice-President, MARJORIE CUTTS
Secretary, MARGARET REILLY
Treasurer, LILLIAN WALLACE



Top row: E. Huntoon, A. Hinds, B. Howard.
Middle row: M. Colby, D. Packard, L. Bartlett, M. Pratt, A. Gardiner.
Bottom row: L. Ross, R. Linnell, M. Dow, B. Ladd, W. Kilgore, J. Caliendo.

OXFORD COUNTY CLUB

President, MARGARET DOW

The Oxford County Club was organized to form a stronger bond of friendship among the students from the various towns in Oxford County represented in the school. The club meets twice monthly under the leadership of the president, Margaret Dow and faculty advisor, Miss Stone. After the business at these meetings, each member at some time or other is chairman of the program for the evening. The club is one of the foremost in coöperating with the school and providing a social atmosphere for all. It is hoped that the club will be as successful in the future as it has been in the past.



Top row: M. Barrett, H. LeSage, H. Tracy, H. Seaverns, E. Johnson, M. Kehoe, M. Palladino.
Bottom row: Miss Jencks, F. Remillard, R. Griffin, J. Luiz, M. Hall, Miss Lewis.

MASSACHUSETTS CLUB

The Massachusetts Club is made up of the members of the student body and faculty whose homes are in Massachusetts. Our meetings are held every other Monday evening in Robie Hall Library, for the purpose of bringing the members of our native state together and to make the others in the school better acquainted with each other through the social activities we sponsor. These dances and parties number approximately six during the school year. Our membership for this year was thirty-five.

Some of our activities during the year were a picnic, the Fall Hop, which was the opening event on the 1932-1933 social calendar of G. N. S., the Christmas Dance; then at that most trying time of the whole year when all the banks closed, we held the Bankrupt Hop. This was something new and only an experiment but a successful one. Our admission fee was five cents. The decorations were newspapers. This all goes to show that it doesn't take expense to make a time enjoyable.

OFFICERS

President, MARY HALL
Vice-President, FRANCES REMILLARD
Secretary, ELLA JOHNSON
Treasurer, JOSEPH LUIZ



Top row: P. Moody, H. Lynch, S. McAllister, A. Scott, L. Jensen, E. Martin, N. Marsh, N. Lothrop, A. Prescott.
Fourth row: A. Tarbox, V. Scott, A. Hills, E. Farrington, A. Lowell, E. Giovino, M. Bell, M. MacCarthy, R. McCloud.
Third row: M. Porello, D. Clark, A. Richardson, F. Graves, C. Zwicker, H. Starling, E. Giovino, W. Packard, P. Huston, F. Hannaford.
Second row: P. Tarbox, B. Harmon, M. Haley, H. Tyler, Miss Wood, M. Rogers, R. Cummings, S. Jensen, J. Bradbury.
Bottom row: A. Rubinsky, R. Crague, C. Prince, C. Smith, E. Beal, L. Higgins, E. Libby.

COMMUTERS' CLUB

In order that commuters may take part in the social life at G. N. S., a Commuters' Club was formed in 1927. The club has done much to develop the spirit of coöperation and sociability. Meetings are held twice a month under the leadership of our president, Mervyn Rogers, and our faculty advisor, Miss Wood. Besides the regular business meetings, some form of entertainment is always provided. Throughout the year, lunches are given in the domestic science room with a one hundred per cent attendance. Although the commuters spend only a part of their day in Gorham, and hence cannot participate in all forms of school activities, there is nowhere a more jovial, loyal group of students.

OFFICERS

President, MERVYN ROGERS
Vice-President, RUTH CUMMINGS
Secretary, HARRY TYLER
Treasurer, MARY HALEY

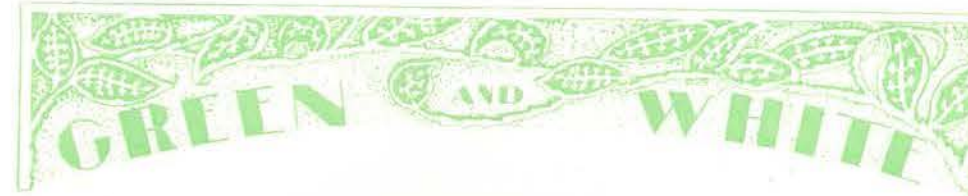


Top row: C. Watts, J. Abbott, W. Hart, N. Leland, K. Twitchell, L. Provencal.
 Fourth row: M. Soper, H. Abbott, S. McAllister, D. Steeves, M. Palladino, B. Farwell, L. Hinckley, V. Small.
 Third row: B. Cook, S. Nichols, A. Crane, V. Brooks, M. MacDonald, M. Daggett, B. Webster, V. Hanna, K. Groezinger.
 Second row: E. Hall, S. Hicks, E. Reed, E. Johnson, W. Cragin, L. Dolliver, E. Syphers, E. Huntoon, C. Allen.
 Bottom row: M. Barrett, M. Sturgis, M. Bickford, S. Fitzmorris.

THE DRAMATIC CLUB

The Dramatic Club, one of the most active organizations at G. N. S., offers enjoyment to all dramatically inclined members of the school. Each year at least one play is given by the club for the amusement of the public. This year a three-act comedy drama, "Girl Shy," was presented in Russell Hall. Some of the proceeds of the evening were spent a few weeks later, when the entire club journeyed to Portland for a theater party.

This club, then, offers an opportunity for advancement along dramatic lines as well as social enjoyment.



Top row: M. Dow, B. Sylvester, P. Elwell, M. Sturgis, M. Parkman, B. Dunton.
 Third row: M. Cook, S. Regina, N. Leeman, L. Libby, P. Leslie, B. Smith, M. Palladino, E. Brown, D. Knight.
 Second row: L. Prior, M. Cutts, M. Nash, Miss Reed, B. Cook, A. Turner, B. Bailey.
 Bottom row: M. Soper, B. Soper.

CAMP FIRE

The Four Winds Camp Fire group is for all girls who have either been members in some group before, or who wish to start their work in Camp Fire here. All girls work industriously to fulfill the requirements necessary to obtain the various ranks. The ranks in Camp Fire are Wood Gatherer, Firemaker and Torchbearer. As yet, there are no Torchbearers in the group.

This year the group has been active in many different lines. Their activities included bandaging, spatter-printing, wood blocking, knot tying, planning menus and preparing suppers, and attending hikes.

The members have also held ceremonies of their own and attended those of other groups, in order to get an idea of the work of other Camp Fire Girls.

It is the purpose of the Senior members of the group to receive guardian certificates, for which special requirements must be met, so that when they go out to teach in the various localities, they may form Camp Fire groups of their own.



Top row: D. Knight, E. Sylvester, M. Nash, A. Hinds, B. Howard, H. Gilpatrick, E. Johnson, E. Renell, M. Goodwin, M. Pratt, M. Sleeper, E. Reed.
 Fourth row: P. Libby, T. Moores, L. Oulton, M. Bickford, V. Moores, E. Kane, M. Cutts, M. Cook.
 Third row: E. Haines, M. MacIntyre, B. Cook, P. Elwell, M. Sturgis, B. Bailey, N. Leeman, S. Jensen, H. Seaverns, M. Hall.
 Second row: E. Smith, L. Libby, P. Leslie, M. Dow, L. Prior, Miss Reed, A. MacMillan, H. Lidback, S. Regina.
 Bottom row: H. Scott, E. Hill, H. Tyler, N. King, D. Packard, L. Rose, R. Hooper, M. Kennedy.

OUTDOOR CLUB

The purpose of the Outdoor Club is to give an opportunity for all girls interested in hiking, to participate in this popular form of exercise. During these hikes it is the plan of Miss Reed, the organizer and advisor of the club, to take the girls to different places each time, if possible.

This year, the club agreed to hold twenty hikes during the course of the year. All girls who go on twelve or more, receive monograms at the end of the year. The members also plan to hold one hike to some pleasant spot where they may have a picnic lunch.

The hikes are very popular with the members of the club, and scarcely, if ever, are there fewer than twenty girls present at each hike.



Top row: R. Hawthorne, L. Dolliver, A. Hinds, E. Reed, M. Palmer.
 Second row: H. Gilpatrick, P. Leslie, J. Caliendo, P. Ellis.
 Bottom row: B. Howard, M. MacDonald, M. Dow, Miss Jordan, A. Miller, A. Hamlin.

NATIONAL HONOR SOCIETY

Although the National Honor Society is well known in many high schools, a uniting of past members such as is found here is unique. Qualifications for membership here are simply that one should have belonged in high school, where he was elected from 10% of the members of his class who stood highest in "character, service, leadership, and scholarship."

The purpose of the society here is to promote those cardinal principles and to bring girls of similar qualities of leadership and interest into closer contact.

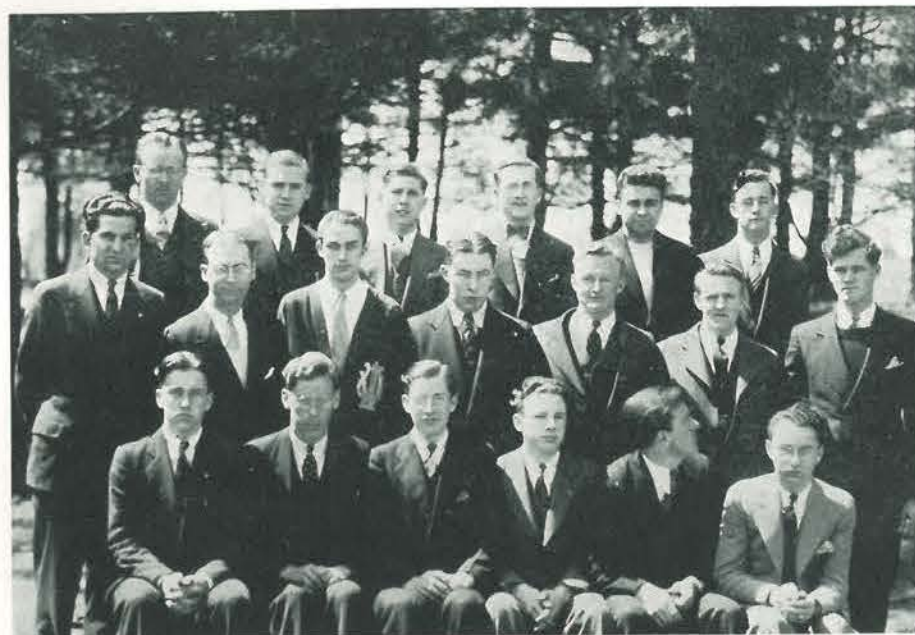
Each meeting furnishes an occasion for worthwhile entertainment, usually through the eyes of some outside speaker. Members of the faculty, especially, have proven most generous with their time and experience and have taken us on many delightful journeys or shown us an interesting hobby of which we otherwise would have had scant knowledge.

OFFICERS

President, ARDENA MILLER

Vice-President, MARGARET DOW

Secretary and Treasurer, ANNA HAMLIN



Top row: C. Allen, W. Ransom, R. Perkins, E. Achorn, L. Provencal, C. Watts.
Middle row: M. Bean, L. Curtis, R. Hallett, P. Boothby, N. Plaisted, A. McSorley, K. Grover.
Bottom row: D. Wight, E. Tobey, C. Ronco, P. Chapman, R. Clifford, R. Smith.

BOYS' GLEE CLUB

At the beginning of the year, Miss Andrews called together all boys interested in the formation of a Boys' Glee Club. About thirty responded and decided to meet on Monday in the music room at Corthell Hall for practice in part singing and in preparation for the operetta, "The China Shop."

The Boys' Glee Club has coöperated with other musical organizations in providing music for the musical broadcast, Superintendents' and Principals' Day programs, the Evening of Art and Music, and many other occasions.

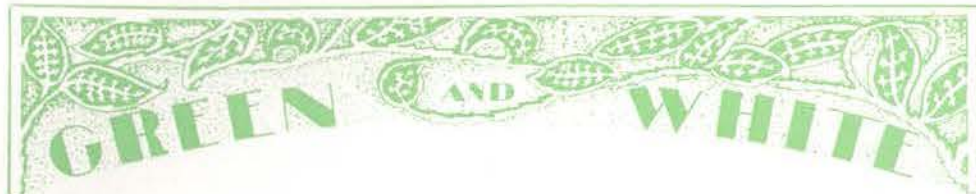
Credit for the success of the Boys' Glee Club is due to Miss Andrews whose fine leadership and training has inspired those who have worked with her and whose personality has kept the interest of all members paramount in music.



Top row: L. Hinckley, C. Tollefson, J. Caliendo, J. McCloud, A. Hinds, E. Johnson, H. Gilpatrick, S. Jensen, F. Graves, C. Waltz, M. Kennedy.
Fourth row: R. Weston, D. Steeves, M. Palladino, A. MacMillan, K. Groezinger, N. King, L. Oulton, M. Bickford, N. Marsh, E. Hill.
Third row: S. McAllister, V. Small, S. Regina, P. Leslie, L. Libby, N. Leeman, P. Ellis, W. Packard, E. Haynes.
Second row: M. Hamor, M. Kehoe, J. Tapley, G. Porter, H. Bedell, D. Marr, H. Lidback, A. King, F. Nunns, R. McCloud.
Bottom row: M. Brown, M. Palmer, M. Swett, E. Brown, D. Knight, E. Sylvester, E. Cashman, R. Hooper.

GIRLS' GLEE CLUB

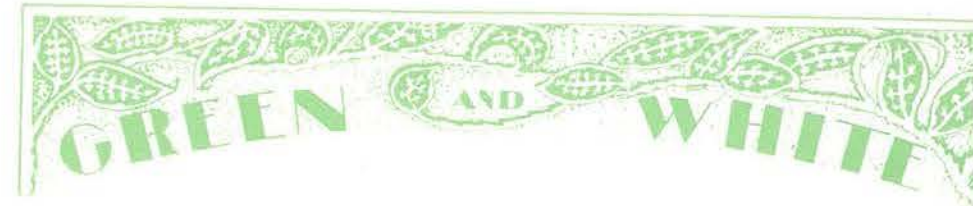
The purpose of this club, which is one of the largest organizations of the school, is to give the musically inclined girls a chance to continue this interest. This is a very active group as is shown by the various undertakings in which its members have participated. It provided some of the entertainment for Superintendents' Day; also it presented a cantata at Christmas time. An unusual feature was the broadcasting program in which several from the Glee Club took part. The most important activity each year is the operetta which, through the excellent leadership of Miss Miriam Andrews and the coöperation of the club, resulted in a very pleasing entertainment and concluded a very successful year.



Top row: E. Hill, C. Blake, M. Bean, N. Leeman, W. Ransom, A. Hinds, C. Wamester, W. Hebert, S. Jensen.
 Middle row: V. Staples, R. Hallett, J. Tapley, E. Achorn.
 Bottom row: D. Marr, D. Wight, L. Curtis, K. Crockett, C. Mitchell, C. Waltz, A. Lowell, L. Libby.

SCHOOL ORCHESTRA

This organization has achieved a high standing this last year. It has played for numerous entertainments and morning exercises. One of its most popular showings was at the Congress Square Hotel, broadcasting delightful music during the winter term. Under the supervision of our music instructor, Miss Miriam Andrews, this organization is expanding in worth and quality. The purpose of this group is to promote music in the best suitable places and be ready to act when called upon to do so.



Top row: C. Gilbert, L. Curtis, R. Clifford, C. Wamester, N. Leland, R. Morton, D. McAllister, K. Crockett, K. Twitchell.
 Third row: W. O'Brien, R. Smith, F. Wardwell, C. Ronco, H. Tyler, C. Kimball, W. Cragin, L. Jensen.
 Second row: R. Hallett, R. Walker, H. Brawn, B. Rawnsley, F. White, P. Chapman, N. Plaisted, M. Moulton, F. Hannaford, W. Ransom, W. Hebert.
 Bottom row: D. Gallison, E. Cote, W. Hart, Mr. Cilly, J. Luiz, R. Corey, A. McSorley, L. Young, L. Provencal.

LAMBDA PI SIGMA

The Lambda Pi Sigma Fraternity is the result of, and has as its object, the promotion of better fellowship among the men students of the Normal School.

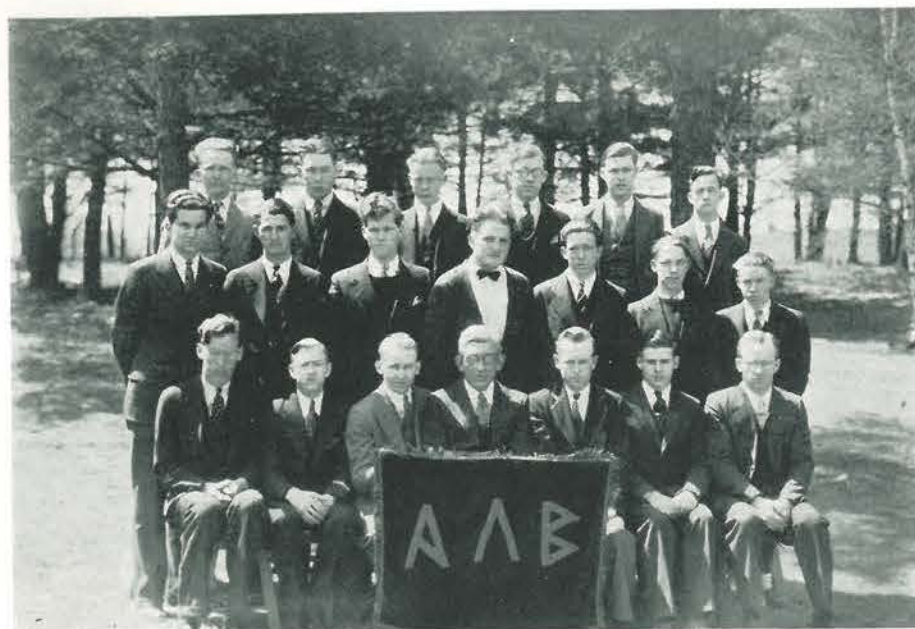
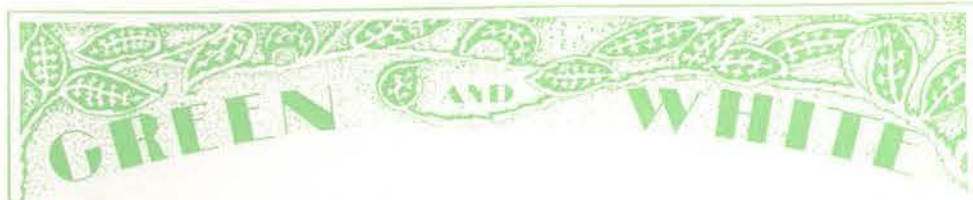
Among the annual events sponsored by the organization are: The Minstrel Show, the Inter-Fraternity Ball and the Field Day. This year the Ball was eliminated due to a crowded school year.

The Minstrel Show, given at Russell Hall in March, was a "Bang Up" affair in every way. Fifty per cent of the proceeds went into the Lambda Pi Sigma Accident Fund, which provides medical care for any male student injured on the campus.

One of the last week-ends in June, the Fraternity and guests mark the end of the season by an outing and banquet at a nearby summer resort.

OFFICERS

President, JOSEPH LUIZ
 Vice-President, PHILIP GANNON
 Secretary, RAYMOND COREY
 Treasurer, ANDREW MCSORLEY
 Sergeant-at-Arms, RAYMOND WALKER
 Chaplain, BYRON RAWNSLEY



Top row: L. Bartlett, P. Boothby, J. Pillsbury, C. Chandler, E. Wildes, C. Watts.
 Middle row: M. Bean, P. Bunker, K. Grover, J. Abbott, A. Prescott, E. Huff, P. Tarbox.
 Bottom row: E. Tobey, R. Storey, L. Abbott, Mr. Brown, R. Smith, M. Shain, C. Allen.

ALPHA LAMBDA BETA

The Alpha Lambda Beta Fraternity was organized in 1928. The purpose of the fraternity is threefold:

- (1) To promote a spirit of friendship and good will among its associates,
- (2) To advance Gorham Normal School morally and socially,
- (3) To uphold equality in all extra-curricular activities.

Under the guidance of Mr. Brown, the faculty advisor, the fraternity has strived to make life at Gorham Normal School this year coincide with its aims.

The fraternity has sponsored several social functions in Center during the school year.

Other activities which the fraternity sponsors are the frat outings, plays, and social meetings promoted for the welfare of the organization and the school.

OFFICERS

President, ROLAND SMITH
Vice-President, LINWOOD ABBOTT
Secretary, ERNEST LIBBY
Treasurer, MERVIN SHAIN
Chaplain, EDWARD TOBEY



Top row: C. Watts, E. Sterling, K. Crockett, R. Hallett, E. Achorn.
 Middle row: M. Rogers, E. Cashman, L. Prior, M. Cutts, R. Bowman.
 Bottom row: P. Elwell, W. Packard, G. Smith, M. Loring, Miss Jencks, A. Gardner.

LIBRARY CLUB

The Library Club was organized in March of this year with the librarian as faculty advisor. A number of the members of the group had already expressed the desire to learn more about library pursuits. Most of the members had already assisted in the library at noontime and during the day.

The chief objectives of the club are to promote interest in the library and to enlarge its sphere of influence.

The major work of the club during this year has been that of classifying and cataloging a pamphlet and picture file. Also, the group has carried on research in order to discover the magazines read by the student body. At the suggestion of the librarian, the club assisted in instituting a rental collection of current books which have been well patronized by the students. Together with the Fellas Orchestra, the club sponsored a dance in Center and a party in the Library. The group plans to continue with the work begun this year and to undertake new projects in the library field as the need may arise.

OFFICERS

President, GEORGE SMITH
Vice-President, MARGARET LORING
Secretary and Treasurer, WINONA PACKARD



Top row: J. Abbott, R. Morton, R. Hallett.
 Middle row: R. Smith, R. McCloud, R. Bennett, A. Rubinsky, W. Ransom.
 Bottom row: E. Huntoon, H. Starling, A. Richardson, E. Syphers, P. Ellis, E. Johnson, B. Howard.

ORACLE STAFF

Editor-in-Chief, ELIZABETH SYPHERS
First Assistant, HELEN STARLING
Second Assistant, BARBARA HOWARD
Business Manager, ROLAND SMITH
Assistants, RACHEL BENNETT, JAMES ABBOTT
Literary Editor, GEORGE WAKEFIELD

Assistants

ANNA RICHARDSON
 ANNIE PROCTER
 SELMA STOCKBRIDGE
 FRANCES SMITH

News Editor, ELIZABETH HUNTOON

Assistants

DANIEL WIGHT
 RONALD HALLETT
 PRISCILLA ELLIS
 RUTH MCLOUD

Athletic Editors

MARGUERITE BOYCE
 RAYMOND MORTON
 HELEN ABBOTT

Fun Editors

WILLIAM RANSOM
 PHILIP GANNON
 ELLA JOHNSON

Alumni and Exchange Editors

EDITH SAWYER
 ANNE RUBINSKY

Faculty Advisors

MISS KEENE
 MISS JOHNSON
 MISS STONE



Top row: V. Brooks, E. Chandler, V. Clark, H. Tracy, L. Jensen, B. Harmon, R. Smith, P. Bunker, Mr. Wieden, P. Moody.
 Bottom row: G. Smith, C. Gross, M. Hall, L. Hinckley, Miss Lewis, A. Miller, Miss Wihry, R. Clay.

GREEN AND WHITE EDITORIAL BOARD

Editor-in-Chief, LUCIA HINCKLEY

Business Managers

VICTOR WALKER
 ELIZABETH MERRILL
 PAUL MOODY
 PHILIP BUNKER

Literary Editors

GEORGE H. SMITH
 VIRGINIA BROOKS
 ERIC CHANDLER
 CELIA GROSS

Alumni Editors

MARY HALL
 VIRGINIA CLARK
 HELEN TRACY

Photographic Editors

RUTH CLAY
 ERNEST LIBBY

Art Editors

ARDENA MILLER
 REUBEN SMITH

Athletic Editors

LOUIS JENSEN
 BARBARA HARMON

Calendar, JEAN LANGDON

Faculty Advisors

MISS LEWIS
 MR. WIEDEN
 MISS WIHRY



AROOSTOOK-PENOBSCOT CLUB

The purpose of the Aroostook-Penobscot Club is social, to bring together the people of these counties in closer comradeship. We strive to make the life here on Normal Hill more serene and happy, and we hope by our coöperation and cheerful spirit to make the lives of others more pleasant. It is for this purpose that we meet twice monthly and plan opportunities whereby we may give pleasure to others. We have enjoyed our club work this year and hope that in the future this club will be as active as it is now.

"G" CLUB

OFFICERS

President, RAY STORY

Secretary, RAY WALKER

Vice-President, KENNETH TWITCHELL

Treasurer, RAY COREY

The "G" Club is an organization composed of boys in the school who have been awarded a letter in any one of the major sports.

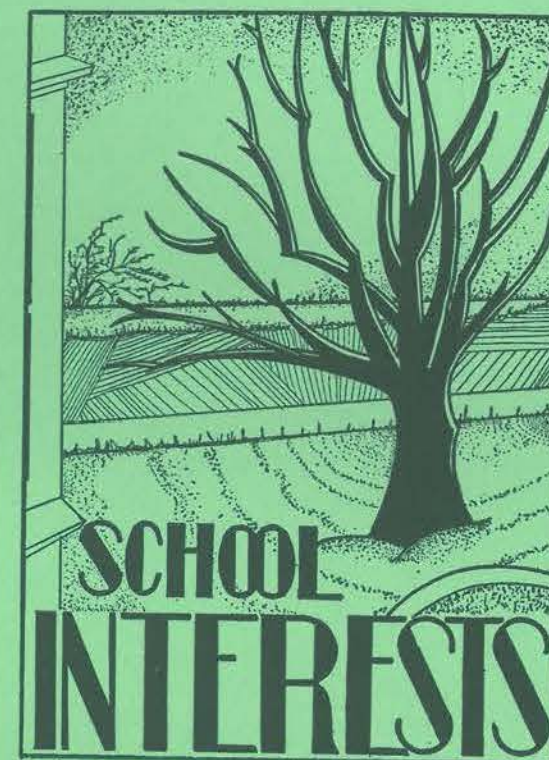
The object of the club is to instill a fraternal feeling among the letter men and to encourage the improvement of the athletics of the school.

Eight active members and the three honorary members; Dr. Russell, Mr. Wieden and Mr. Packard, comprise the membership of the club.

With initiation coming in June, the club expects to increase its enrollment threefold.

MEMBERS

Louis Jensen, Ray Walker, Ray Corey, Andrew McSorley, Roland Smith, William Ransom, Ray Story.





SUPERINTENDENTS' AND PRINCIPALS' DAY

The third annual Superintendents' and Principals' Day at Gorham Normal School was sponsored by the Civic Committee on November 9, 1932. This event, which has increased in popularity, gave the students an opportunity to entertain their former superintendents and principals at dinner, while the visitors in turn gave valuable advice and counsel at the group meetings. Later, a conference, followed by a tea with Dr. Russell and his faculty, proved another step toward solving the problem, "What can a Normal School do to better prepare its students to teach in the State of Maine?" This was the subject of the address by Mr. Burrill from Augusta.

The various organizations of the school in coöperation with the Civic Committee presented the following program at the assembly in the afternoon:

PROGRAM

A Welcome Doris Marr
Address Superintendent Fred W. Burrill
"What can a Normal School do to better prepare its students to teach
in the State of Maine?"

THE GREEN AND WHITE REVUE (Written by the Journalistic Writing Class)

Junior Marie Soper
Kindergarten Course Barbara Hurd
Senior Louise Dolliver
Advanced Senior Elizabeth Syphers
Mid-Senior Ernest Libby
Industrial Arts Charles Allen

QUARTET, BOYS' GLEE CLUB

Earl Achorn Byron Rawnsley
William Ransom Raymond Corey
Swing Low, Sweet Chariot *Negro Spiritual*
Home on the Range *Guion-Riegger*

ART CLUB

Ardena Miller, Pearl Huston

ORCHESTRA

Carmen Overture *Bizet*
Coronation March *Eilberg*

ORACLE

Carrol Ronco, Elizabeth Foss, Florence Nunns

DRAMATIC CLUB

Alita Crane, Nelson Leland, Mary Sturgis, Wallace Hart, Carleton Watts

CAMP FIRE GIRLS

Mildred McAllister, Henrietta Lidback, Beverly Soper, Elaine Pingree

Y. W. C. A.

Eleanor Brown, Margaret Dow, Bernice Ladd, Anna Hamlin,
Madeline Daggett, Alenia Lake

GIRLS' ATHLETICS

Marguerite Boyce, Janet Tapley, Aurora Bouchard, Ella Johnson,
Eunice Reed

OUTDOOR CLUB

Elizabeth Sylvester

BOYS' ATHLETICS

Kenneth Twitchell, Edward Tobey, Roland Smith, Andrew McSorley

"G" CLUB

Raymond Story

GIRLS' GLEE CLUB

Salutation *Gains*
Negro Spiritual *Bliss*



MADONNA OF THE CHAIR
Posed by Eunice Reed and Marie Soper

AN EVENING OF ART AND MUSIC

Par excellence seems to be the only adjective which does justice to the entertainment presented by the members of the Art and Glee Clubs at Gorham Normal School on December 6, 1932. Too much cannot be said in praise of the work of Miss Andrews, Miss Wihry, and those members of the student body who so indefatigably gave of their talent and time to make this one of the finest things the school has ever done. Every picture was worthy of special mention, but lack of space compels us to speak only of the presentation as a whole. The program follows:

PROGRAM

1. Picture—Boy With the Torn Hat Sully
 Posed by John Wagner
 Poetry—Barefoot Boy Whittier
 Read by Ella Johnson
2. Picture—Baby Stuart Van Dyck
 Posed by Roberta Hooper
 Music—God Save the King Carey
 Sung by Mixed Quartet
3. Picture—Madonna of the Chair Raphael
 Posed by Eunice Reed and Marie Soper
 Music—Ave Maria Schubert
 Played by Alma Lowell
4. Picture—Mona Lisa da Vinci
 Posed by Mary Hall
 Poetry—Mona Lisa Selected
 Read by Margaret Ridlon
5. Picture—Age of Innocence Reynolds
 Posed by Phyllis Marston
 Music—Simple Confession Thome
 Alma Lowell and Ernest Libby
6. Picture—Boy with the Rabbit Raeburn
 Posed by Norma Williston
 Poetry A. A. Milne
 Read by Anne Rubinsky
7. Picture—Madame Le Brun and Daughter Le Brun
 Posed by Celia Richardson and Annie Proctor
 Music—Adoration Borowski
 Played by Ernest Libby
8. Picture—Hope Watts
 Posed by Audrey Turner
 Music—Whispering Hope Hawthorne
 Sung by Ruth McCloud and Janet McCloud
9. Picture—Whistler's Mother Whistler
 Posed by Hattie Guptil
 Music—Mother Machree Ball
 Sung by Male Quartet
10. Picture—Angelus Millet
 Posed by Pauline Boothby and William Kimball
11. Picture—Sir Galahad Watts
 Posed by Pearl Huston
 Poetry—Sir Galahad Tennyson
 Read by Altha Renell
12. Picture—Pot of Basil Alexander
 Posed by Florence Allen
 Music—Meditation from "Thais" Massenet
 Played by Wilma Wyman
13. Picture—Song of the Lark Briton
 Posed by Selma Stockbridge
 Music—Hark, Hark, the Lark Schubert
 Sung by Girls' Trio
14. Picture—Spirit of '76 Willard
 Posed by Earl Achorn, Earle Huse, Carrol Ronco
 Music—Yankee Doodle Origin Unknown
 Played by Orchestra



THE CHINA SHOP OPERA

PRESENTED BY THE GLEE CLUBS
GORHAM NORMAL SCHOOL
Wednesday, April 5, 1933

CAST

Fat Sing, a wealthy merchant	Monroe Bean
Sing Fong, his son	William Ransom
Wun Tun, a politician	John Massey
Mush Lush, a woman-hater	Earl Achorn
Chunk	Charles Allen
Tannyu	Ronald Hallett
Mr. Juscot Karfair	Daniel Wight
Lotus Blossom	Margaret Palladino
Ting-A-Ling	Ruth McCloud
Ding Dong	Elinor Brown
Ping Ping	Ruth Weston
Hoy Tee Toy	Sara McAllister



Shoppers at Fat Sing's Bazaar

Kathryn Groezinger, Mildred Hamor, Arline MacMillan, Sabina Regina,
Minnie Brown, Eugenia Hill, Cecelia Blake, Carolyn Floyd, Helen Bedell,
Phyllis Leslie, Nina Marsh, Lucy Oulton, Sena Jensen, Mary Bickford,
Faith Graves, Henrietta Lidback, Priscilla Ellis, Rachel Bennett
Paul Boothby, Edward Tobey, Reuben Smith, Carlton Watts, Norman Plaisted,
Carrol Ronco, Kermit Grover, Paul Chapman, Waldo Perkins,
Richard Clifford, Raymond Walker, Phillip Gannon

Garden Party Guests

Roberta Hooper, Mae Kennedy, Marjorie Frost, Vera Small, Hazel Gilpatrick,
Dorothy Knight, Carlton Watts, Norman Plaisted, Nelson Leland,
Reuben Smith, Edward Tobey, Paul Boothby

Temple Dancers

Lucia Hinckley, Lelia Libby, Janet Tapley, Helen Abbott,
Frances Huse, Genevieve Porter

ORCHESTRA

Accompanist	Avis Hinds
Violins	Alma Lowell, Warren Hebert, Leonard Curtis
'Cello	Doris Marr
Saxophone	Keith Crockett
Flute	John Parsons
Drums	Milton Nelson
Xylophone	Alta Elkins

Directed by Miriam E. Andrews



THE NEW LIBRARY

The addition of a new library unit to the Normal School was begun during the winter of 1932, after a survey of the library needs was made. Recommendations submitted to Dr. Russell included the use of the old assembly room for the main reading room. This room was renovated, partially redecorated, a new lighting system installed and new furniture purchased. In accordance with the recommendations, a full time librarian was engaged to reorganize the library; thus relieving Miss Jordan of one of the heavy responsibilities to which she had faithfully attended.

The librarian chosen was Miss Lydia M. Jencks, who had been a member of the library staff of the New York State Normal School at Geneseo. In anticipation of the opening of school, the books were moved into the new library and the old library room was made ready for a classroom. Soon after the first quarter began, a reserved book section was installed. Later, students of the library science classes arranged files of back numbers of magazines, started a pamphlet file, made a college catalog file, placed books in their proper order on the shelves and checked cards for magazines and books at the main and reserved desks as their laboratory work in library science. The assistance given by these students, not only gave them an insight into the workings of the library, but rendered excellent help to this department. The work of student volunteers made it possible to keep the library open during the noon hour and on Saturday mornings.

That the library is extensively used is shown by the attendance, circulation and additions of new books. Approximately forty-five people use the library each noon, twenty on Saturday morning and two hundred eighty-five during the school day. The daily circulation of books and magazines averages fifty. The library receives seventy-five monthly periodicals. About nine hundred new books have been added to the library this year; among them were those given by Mr. Earle Coffin of Gorham, Miss Halliday of last year's faculty and members of the present teaching force.

If the achievements of the past are indicative of those of the future, the growth of this new department promises to justify the efforts of both students and faculty.



Dodge Ball



Ball Relay



Athletic Badge Test



Bull in the Ring

THE TRAINING SCHOOL

The Training School is an integral part of the Gorham Normal School. Any phase of its work is of greatest interest to all students, and is followed by them with enthusiasm. Mr. Anderson has chosen this year to show through the GREEN AND WHITE some of the athletic and playground activities as carried on in the different grades in the training school.

THE ATHLETIC BADGE TESTS

This is the fourth year that the boys and girls of the Junior High School have taken the playground badge tests sponsored by the National Recreation Association. These tests are very popular in the spring and fall before the various athletic teams are organized.

There are three tests for boys and three for girls. Attractive bronze badges are awarded to pupils passing each test. The requirements for the first badge for girls are as follows:

- | | |
|---------------------------------|-------------------|
| 1. Balancing (1 deep knee bend) | 24 feet, 2 trials |
| 2. 50-yard dash | 8 seconds |
| 3. Basketball throw | 35 feet |
| 4. Baseball throw and catch | 3 errors allowed |

The first badge for boys requires:

- | | |
|------------------------|-----------------|
| 1. Chin the bar | 4 times |
| 2. Standing broad jump | 5 feet 9 inches |
| 3. 50-yard dash | 8 seconds |
| 4. Baseball throw | 130 feet |

Since the tests began, the girls have won a total of 297 badges; and the boys a total of 165 badges. Twelve girls have qualified for the third (most difficult) badge, and about equal numbers of girls have won the first and second badges. No boy has earned the third badge, and about six boys have won the second badge.



PLAYGROUND ACTIVITIES IN GRADES 5 AND 6

During the fall and spring seasons, playground activities for grades five and six are divided into two classes, free play and directed play. Two recess periods each week are devoted to the former and three to the latter of these classes.

On Monday, Wednesday and Friday, the pupils are divided into four groups. Each group is taken charge of by a student teacher who directs the activity for that group. The activity is planned in advance so that none of the recess period is lost in trying to decide upon what to play.

During the fall, the boys play basketball and football, and in the spring, baseball is very popular. The fifth-grade girls enjoy circle games, radio ball, etc., while the sixth-grade girls prefer stunts, hand ball, and baseball. Ordinarily, no one is excused from play. There is a game for everyone and everyone is expected to be in a game.

On Tuesday and Thursday, the pupils play whatever they wish in unorganized groups. The teachers in charge merely see that everyone is on the proper section of the playground and that everything goes smoothly.

In the winter, organized play is, for the most part, impossible. Snow games, such as snow bottles, "Fox and Geese," and "Follow the Leader," are played on the lower part of the playground. The girls play "Red Light" and jumping games or contests on the sidewalks.

PLAYGROUND ACTIVITIES IN GRADES 3 AND 4

The children's ages in the third and fourth grades range from six to twelve years. These children are in the "Big Injun" period, as Joseph Lee says in his book, "Play in Education."

The child is an individualist at this time, when games of tag, individual contests in running, jumping, and ball games are popular. It is through this kind of recreation that the child acquires muscular control. Education is not only physical, intellectual, moral, vocational, civic, religious; it is recreational as well. The teacher can carry on this recreational education by getting out on the playgrounds with the children at recess time to supervise their games. She must be sure to foster the spirit of fair play in these games. The most harmful factor in any game is the lack of enforcement of rules, and the child who breaks the rules of these games with impunity will try to break the rules of the community. On the moral side the teacher can get into the children's lives thus and exert an influence which you can never exert in a schoolroom. On the discipline side, the teacher learns the children's individual natures so that control of these children will be cosier in the classroom. Thus the teacher is able to prevent many of the troubles that are difficult to adjust later.



PLAYGROUND ACTIVITIES IN GRADES 1 AND 2

Playground activities in grades 1 and 2 are divided into two groups: namely, supervised play and free play. Supervised play comes three days a week, Monday, Wednesday and Friday, and free play on Tuesday and Thursday.

For the supervised play periods the children are divided into four groups, one student teacher having charge of each group. Each girl must plan her games ahead so she is sure of the rules and procedure. Children are apt to want one game day after day so they are told the game and no time is lost in arguments.

Free play means that the children spend the period as they wish. However, they must be watched, kept in the right portions of the playground and all difficulties settled.

In the fall the children enjoy circle games, singing games, and folk dances. During the winter there is not as much directed play. Oftentimes we build a snowman, snow house or fort; but for the most part the children enjoy sliding and playing in the snow.

In the spring, after the grounds have dried up sufficiently, the boys show interest in playing ball. A rubber ball is used. The girls enjoy jumping rope and hop-scotch. The boys like races and jumping. At all times the active circle and tag games are most popular.

All the children are required to go out of doors at recess time for this fresh air and exercise are necessary to good health and good work in school.

JUNIOR PRIMARY

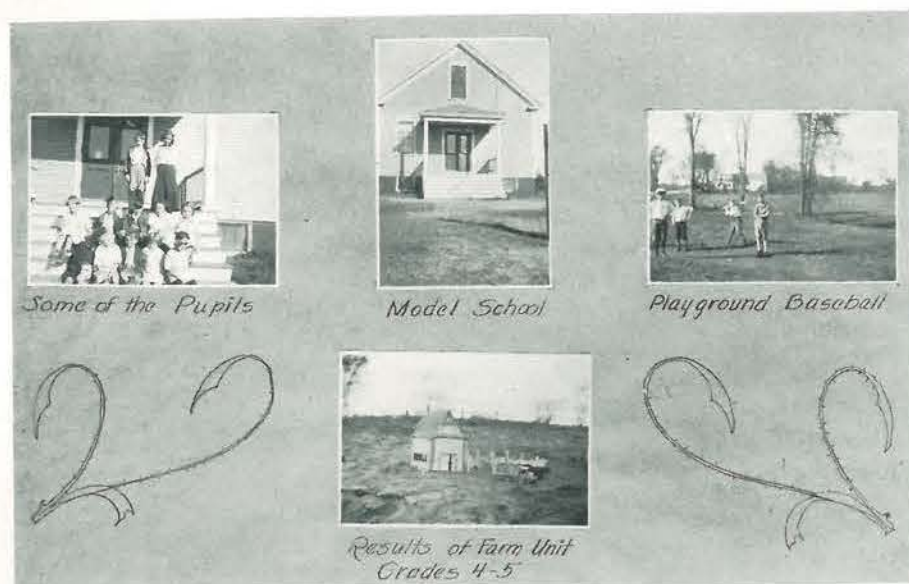
"Children must find outlet for their excess energy."

This is provided for in the Junior Primary Grade in a twenty-minute outdoor recess period scheduled for the middle of the morning session.

During this period, the supervisor and student teachers join the little folks in a variety of lively group games, which require the following habits on the part of the players: coöperation, alertness of mind and body, altruism, self-control, fair play, and good humor.

One of the games which the children particularly enjoy is "Skip Tag." The children form a circle. One child is IT. If he catches the one who is IT before he reaches the place of the one tagged, the one who is caught is out of the game and must go into the center of the circle. The tagger becomes IT and the game continues.

GREEN AND WHITE



THE WEST GORHAM MODEL RURAL SCHOOL

"The first time I was ever in a rural school," exclaims a Junior girl in an observation class here.

Another series of exclamations follow as the group are taken on a tour of inspection of the building.

The "Little Room," which contains the bookcases, a supply closet and a table, might also be termed an "adjustment" room, since it is here that special helping work is done. This gives ample opportunity for extra individual help and supervised project work.

Then there is the basement with its concrete floor, which provides a fine indoor playroom on stormy and extremely cold days.

At the head of the cellar stairs and opening off the schoolroom is a room which contains the hot lunch equipment. This part of the winter program has been practiced for many years. This winter these lunches were served three times a week, usually a hot drink. The students served their turn on the various committees connected with it.

The schoolroom itself is occupied by only nineteen pupils this year. These are in the grades from the sub-primary to the seventh.

The McClellan League of this school has been the means of improving our schoolroom. The boys have varnished, while the girls have assisted in making curtains for the windows.

An interesting unit on the Dairy Farm was worked out in the fall. This called for the construction of a barn from a pasteboard carton, silo, farm animals and fowl. Trucks were brought from various homes.

Our baseball team does not boast the necessary nine. Nevertheless, we trust that no ball will crash a window in Miss Hasting's car, for what would that Junior girl think of the outside of a rural school?





C. Allen, L. Curtis, J. Luiz, K. Crockett, W. Ransom.

FELLAS

Charles Allen, Drums
Leonard Curtis, Trombone

Joseph Luiz, Saxophone
William Ransom, Piano

The Fellas Orchestra has added to the enjoyment of fair co-eds and stalwart youths as they occasionally collected in Center for a few hours of la danse and entertainment.

The old John D. Marancurt orchestra broke up with the loss of Harvey Johnson and Marjorie Austin by graduation last year; however Ransom and Curtis were left and they proceeded to pick a few musicians to fill the vacancies. After the semi-finals and finals were eliminated, Joe Luiz, Keith Crockett and Charles Allen survived the severe syncopated rhythmic dissonance exalted by the veterans of the old John D. Marancurt.

The first large contract was the Junior Reception, but the John D. Marancurt had undergone a strange metamorphosis. They emerged as the Fellas Orchestra with a string of letters in front of their tapping heels and silver instruments.

The Fellas have played for all the clubs in school from the Massachusetts Club to the Aroostook County Club. (Their only attempt at dramatics was the presentation of "The Murder of the Lighthouse Keeper.")

The Fellas have had other musicians occasionally join their circle of syncopation, namely Marie Soper, the popular pianist, Daniel Wight of operetta fame, and Milton Nelson, Westbrook drummer.

The day Mr. Albert was taking pictures on the old tennis courts, Joe Luiz said, "I've enjoyed this orchestra more than any other organization in school."

The other members of the orchestra who were standing near answered in unison, "So have I."

The Fellas are leaving two as a nucleus for an orchestra next year, Keith Crockett and Marie Soper.



FAIREST NORMAL

We rise, Fairest Normal, thy spirit to show
And to honor the trust that we bear;
'Tis a trust that on others we'll only bestow
When duty shall call us elsewhere.
But a place in our lives thou hast won evermore,
Through the years that are passing apace,
And when we from thy portals the future explore,
We've a picture that naught can efface.

Thy green showest life in its spring at the morn,
Ere our brows have been wrinkled with care,
But full more shall it mean as the years shall adorn
The calling for which we prepare,
And thy white is a symbol of purity born
With a vision of lofty ideals;
May youth's purity last and be never withdrawn,
When the future its secret reveals.

Then hail, Fairest Normal, once more do we sing,
For we know that youth fadeth away;
Let us love thee today, take the tribute we bring,
Attempting in vain to repay;
As thy daughters and sons we will be brave and true,
Thy traditions we'll keep and defend,
Take our pledge of allegiance which now we renew,
May thy prestige all classes transcend.

Louis Burton Woodward.



Bonnie & Bill



Twins



Boyer & Nash



El & Lorry



Ken & Jean



Two Juniors



Eunice & Ella



*Delaney & Dulliver
Jr.*



"An Ideal Couple"



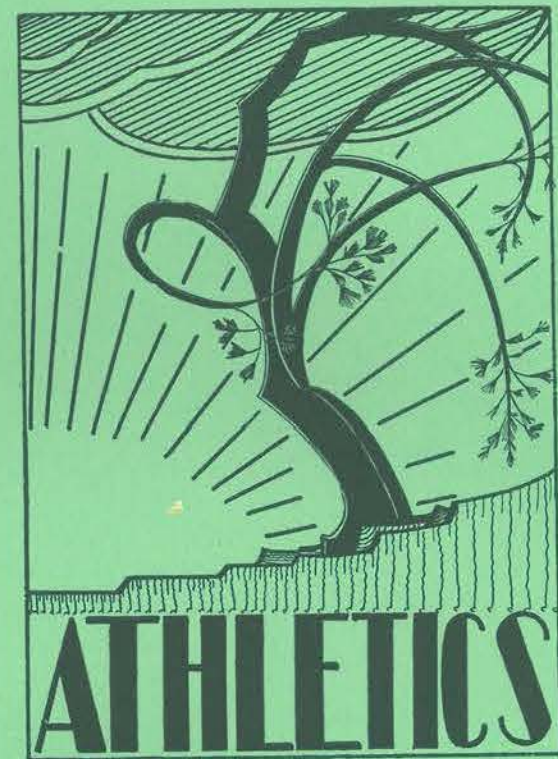
A beaming bunch



Sunny Seven



Exodus Maque





W. Ransom, G. Porter, Miss Reed, Mr. Packard.

ATHLETIC ASSOCIATION

THE COUNCIL

Honorary President, WALTER E. RUSSELL

President, WILLIAM RANSOM

Secretary, SARAH REED

Vice-President, GENEVIEVE PORTER

Treasurer, EVERETT S. PACKARD

YOUNG MEN'S ATHLETIC ASSOCIATION

President, ANDREW MCSORLEY

Secretary, KEITH CROCKETT

Vice-President, LEONARD PROVENCAL

Treasurer, CHARLES ALLEN

YOUNG WOMEN'S ATHLETIC ASSOCIATION

President, EDNA DELANEY

Secretary, ARDENA MILLER

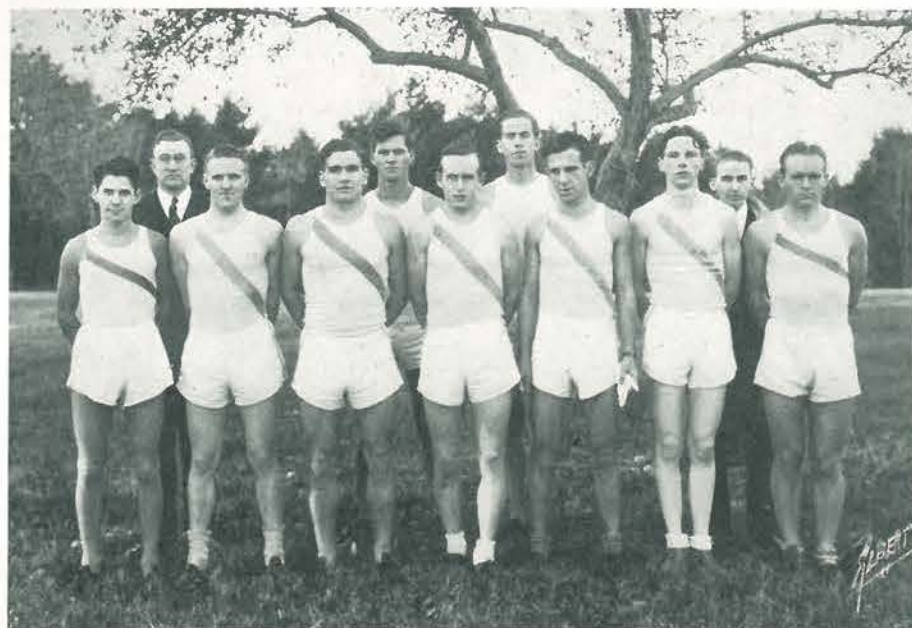
Vice-President, ELLA JOHNSON

Treasurer, DORIS MARR

ATHLETIC ASSOCIATION

Every student of the Gorham Normal School automatically becomes a member of the Athletic Association upon payment of the blanket tax on the opening day of school. Two dollars and seventy-five cents of this tax is turned over to the Association for athletics. In turn, the members of the Association are entitled to free admittance to all athletic events of the school.

For efficiency, the Association is divided into three groups: the Young Men's A. A., the Young Women's A. A. and the Council. The Athletic Council is comprised of the Principal, the three coaches, and three student representatives from each of the two branch associations. The duties of this body are to approve all measures considered by the branch organizations and to decide on matters as to eligibility and awarding of letters. It has also taken upon itself a program of equipping the gymnasium. For the second year the Council has sponsored a "Small Schools Tournament," which this year saw Gorham High defeat Buxton High for the championship.



THE TEAM

Top row: Mr. Packard, K. Grover, R. Morton, L. Abbott.
Bottom row: D. Gallison, A. McSorley, K. Twitchell, R. Smith, E. Cote, P. Chapman, C. Allen.

1932 CROSS COUNTRY

ROLAND SMITH, *Captain* LINWOOD ABBOTT, *Manager*
EVERETT S. PACKARD, *Coach*

THE TEAM

Roland Smith, '33	Linwood Abbott, '33
Andrew McSorley, '33	Charles Allen, '33
Emile Cote, '33	Kenneth Twitchell, '34
Maxwell Moulton, '33	David Gallison, '34
Clifford Gilbert, '33	Raymond Morton, '35

SUMMARY

Dual Meet at Deering, October 14—Gorham Normal, 22; Deering High, 33.
Dual Meet at Gorham, October 19—Gorham Normal, 15; Bridgton Academy, 42.
Dual Meet at Lewiston, November 1—Gorham Normal, 17; Bates 1936, 44.
Dual Meet at Bridgton, November 4—Gorham Normal, 20; Bridgton Academy, 38.

TEAM "B" RUNS

Dual Meet at Brunswick—Gorham Normal, 34; Brunswick, 23.
Dual Meet at Gorham—Gorham Normal, 30½; Brunswick, 24½.

TEAM "C" RUNS

Triangular Meet at Gorham—Greely Institute, 1st; Windham, 2nd; Gorham, 3rd.



THE SQUAD

Top row: L. Abbott, L. Provencal, J. Abbott, R. Perkins, C. Wamester, C. Allen, Mr. Packard, M. Bean, R. Smith, L. Bartlett, D. Ingham, M. Moulton.
Middle row: P. Chapman, D. Gallison, A. McSorley, K. Twitchell, R. Morton, E. Cote, K. Grover.
Bottom row: R. Clifford, C. Ronco, N. Plaisted, H. Burr, Massey, L. Young, C. Gilbert.

For the third successive season Gorham Normal's cross country team closed the season undefeated. In response to the first call for practice, Coach Packard met the largest squad ever to report for cross country. Because of the difficulty in securing opponents of competitive calibre, the varsity schedule was limited to four runs. Coach Packard presented an aggregation with an esprit de corps which has always characterized his teams. The men always ran as a team instead of trying for individual prominence.

The first meet of the year saw Gorham invading Deering. This run was the closest one of the year. Bond, of Deering, led all the men to the tape. He was the only man during the entire season to lead a Gorham man at the finish. But in spite of dropping first place, Gorham placed the next four men and thereby won by a 22 to 33 margin.

The second meet saw Bridgton Academy at Gorham. This was the only run at Gorham for the varsity team. The home course proved too hard for the visitors, with the result that five Gorham men crossed the line hand in hand to capture the first five places. The final score was 15-42.

The following week found Gorham traveling to Lewiston to battle the Bates Freshman team. The first four places fell to Gorham. The final tally showed a 17-44 victory for our boys.

The final run of the season found Gorham again traveling to Bridgton. On their home course Bridgton proved a much harder team to beat, but the boys returned home with a 20-38 victory.

By graduation, Captain Smith and "Andy" McSorley, who for three years have run on the undefeated cross country teams, as well as Gilbert and Cote, will be lost. With "Ken" Twitchell, last year's Junior sensation, "Davie" Gallison, a sure point winner, and Raymond Morton, this season's Junior marvel, as well as many promising men on the "B" and "C" teams, Coach Packard has bright prospects for another undefeated team next season.



THE TEAM

Top row: D. Ingham, E. Libby, Mr. Wieden.
 Second row: D. Gallison, E. Chandler, L. Jensen, L. Marston, F. Wardwell, H. West.
 Bottom row: K. Crockett, D. Webb, A. McSorley, R. Smith, W. Ransom, N. Plaisted, C. Gilbert.

BASKETBALL

OFFICERS

Captain, ROLAND SMITH Manager, DWIGHT INGHAM
 Coach, CLIFFORD O. T. WIEDEN

THE TEAM

Roland Smith, '33	Eric Chandler, '34	Dwight Webb, '35
Andrew McSorley, '33	David Gallison, '34	Keith Crockett, '35
William Ransom, '33	Harold West, '34	Norman Plaisted, '35
Clifford Gilbert, '33	Louis Jensen, '34	F. Wardwell, '35
	Leslie Marston, '35	

SUMMARY

VARSITY		JUNIOR VARSITY	
G. N. S.	Opp.	G. N. S.	Opp.
56 Alumni	41	32 Fryeburg Academy J. V.	30
35 Fryeburg Academy	45	30 Newfield High School	12
55 R. I. College of Education	39	*27 Gorham High School	19
18 Cheverus High School	55	*27 Buxton High School	24
20 Farmington Normal School	51	*40 Standish High School	31
33 Salem Teachers' College	52	31 Buxton High School	27
*24 Farmington Normal School	67	37 Standish High School	40
*24 Fryeburg Academy	26	*30 Fryeburg Academy J. V.	37
*15 Cheverus High School	39	33 Scarboro High School	24
		17 Gorham High School	22

* Games away.



THE SQUAD

Top row: C. Allen, L. Curtis, C. Kimball, Coach Wieden, L. Bartlett, J. Massey.
 Third row: L. Provencal, C. Ronco, P. Gannon, R. Morton, M. Bean, P. Chapman, R. Clifford.
 Second row: E. Libby, D. Gallison, E. Chandler, L. Marston, F. Wardwell, N. Plaisted, H. West, D. Ingham.
 Bottom row: K. Crockett, D. Webb, L. Jensen, R. Smith, A. McSorley, W. Ransom, C. Gilbert.

BASKETBALL

As in preceding years, the interclass basketball series ushered in Gorham Normal's major winter sport. The series was won by the Mid-Seniors who, as Juniors, were the victors in last year's interclass games.

The first scheduled game of the season found Fryeburg Academy at Gorham. The visitors returned home with a 45-35 victory. The return game at Fryeburg finished with the score much closer but, again, in favor of Fryeburg. In the last few seconds of play, a long shot spelled defeat for Gorham, 26-24.

In the second game of the season, Gorham defeated Rhode Island College of Education, 55-39. The following week the home team met Cheverus for the first of their two game series at Gorham. The first game saw Cheverus win 55-18, and in the return game, which marked the close of Gorham's season, Cheverus again won, 39-15.

The week between the two Farmington games, Gorham played Salem Teachers' College. With practically the same team which Gorham defeated the year before, Salem reversed the tables and returned home with a 52-23 victory.

Farmington won both of the objective games of the season by large scores. The first game at Gorham the score was 51-20, and in the return game at Farmington, 67-24. This was the third consecutive year of victory for Farmington and gave our opponents permanent possession of the Chrissikos Trophy, for which the two teams have been battling since 1924.

In contrast with the varsity team's unsuccessful season, the junior varsity enjoyed a highly successful one, winning seven of the ten games played. The junior varsity played mostly the smaller high schools and through their experience won the majority of their games.



THE 1932 TEAM

Top row: Mr. Wieden, D. Day, L. Jensen, J. Anderson, W. Ransom, R. Corey, R. Clifford, R. Walker, M. Moulton.
Bottom row: D. Gallison, L. Provencal, H. Johnson, A. McSorley, J. Smith, I. Gordon.

BASEBALL 1932

OFFICERS

Captain, WILLIAM RANSOM

Manager, IRVIN GORDON

Coach, CLIFFORD O. T. WIEDEN

THE TEAM

John Anderson, '32	Raymond Corey, '33	Raymond Walker, '34
Harvey Johnson, '33	Edward Tobey, '33	Daniel Snow, '34
Andrew McSorley, '33	Donald Day, '34	Richard Clifford, '34
Roland Smith, '33	David Gallison, '34	Louis Jensen, '34

SUMMARY

*Gorham Normal	5	Deering High	6
*Gorham Normal	3	South Portland High	3
Gorham Normal	6	Fryeburg Academy	4
Gorham Normal	8	Westbrook High	10
*Gorham Normal	7	Westbrook High	9
*Gorham Normal	12	Fryeburg Academy	3

* Games away.



THE 1933 TEAM

Top row: Mr. Wieden, M. Moulton, F. Wardwell, G. Smith.
Middle row: R. Smith, L. Curtis, K. Crockett, R. Clifford, R. Corey, R. Morton, D. Webb, R. Walker.
Bottom row: L. Provencal, D. Gallison, W. Ransom, A. Tarbox, A. McSorley, C. Kimball.

BASEBALL

The interclass baseball series ushered in the baseball season at Gorham. In the play-off game between the Juniors and the Mid-Seniors, the Juniors won, thereby capturing the baseball trophy. By the showing in the interclass series, the varsity team was selected.

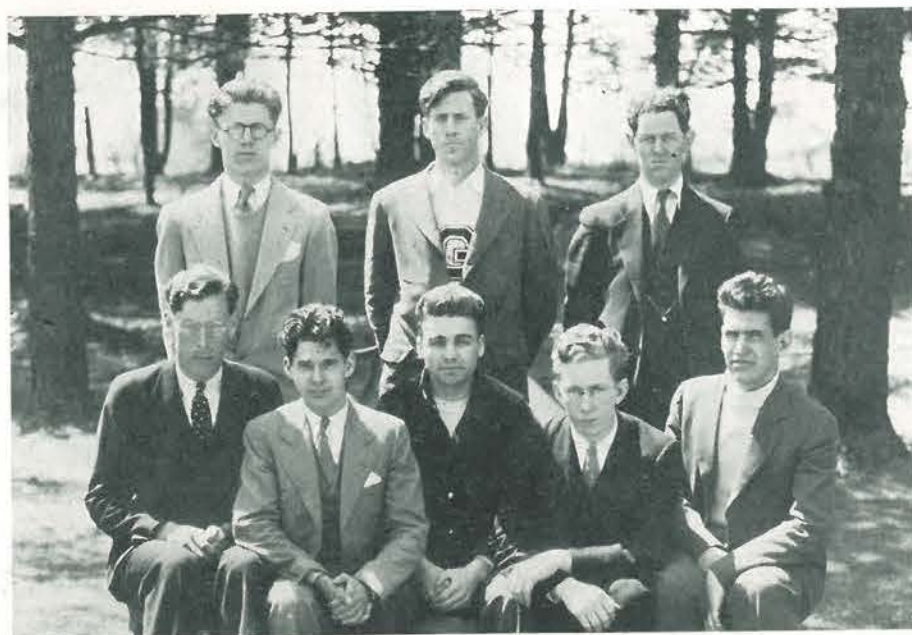
The varsity team opened the season against Deering. Due to the wildness of Gorham's pitcher and the errors at critical moments, Deering drew the verdict 6-5, even though Gorham outhit the Purple team.

For the next game Gorham travelled to South Portland to battle to a 3-3 tie. The game was a pitchers' battle from start to finish, both pitchers keeping the hits well scattered.

In the first game with Westbrook at Gorham, the home team led at one stage of the game, 7-4, but Westbrook spurted in the closing innings to win, 10-8. In the second game with Westbrook, which was a repetition of the first, Gorham at one time led, 6-0; but, again, Westbrook rallied in the late innings to take the game by a two-run margin, 9-7.

Gorham and Fryeburg continued their policy of playing two games. This year Gorham won both games, running the total wins to seven out of ten. The first game played at Gorham ended 6-4, while in the return game at Fryeburg, Gorham, with a revised team, snowed the Academy under by a score of 12-3.

By graduation only one man is lost. At the close of the season, William Ransom was again elected to lead the baseball team next year. With many veterans returning to school, Coach Wieden has bright prospects in baseball for the coming year.



BOYS' INTERCLASS COUNCIL
 Top row: K. Crockett, R. Morton, L. Marston.
 Bottom row: E. Tobey, D. Gallison, L. Provencal, L. Jensen, J. Luiz.

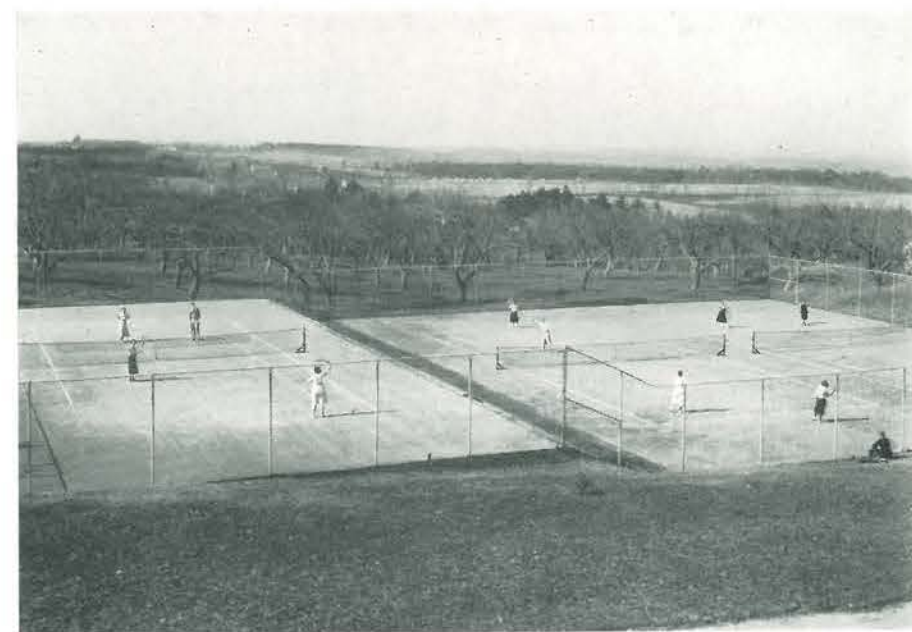
INTERCLASS ATHLETICS

In order to promote athletics and to include as many people as possible, athletic activities are divided into varsity competition and class competition. The former is limited to three sports: cross country in the fall, basketball in the winter, and baseball in the spring. A letter can be secured only in varsity competition. During the course of the school year interclass competition in cross country, tennis, volley ball, basketball and various track events is promoted. At the beginning of each year, each class selects its class council, consisting of three members, which in turn organizes the teams which represent their respective classes. The athletes from each are divided into major and minor teams. Each member of a minor team is given a green stripe, and each member of a major team is awarded a white stripe, which is equivalent to two green stripes. Upon securing ten green stripes or their equivalent, class numerals are awarded. At the close of each year, the class which has won the greatest number of points is given the Council Cup. For the year of 1931-32 it was won by the Class of 1933.

TROPHY WINNERS

Sport	Donor	1930-31	1931-32	1932-33
Cross Country	James Bailey Co.	1933	1933	1933
Basketball	Louis Chrissikos	1931	1934	1934
Volley Ball	Albert Studio	1931	1934	1934
Tennis	Massachusetts Club	1931	1933	1933
Baseball	Lambda Pi Sigma	1931	1934	1934
Track	Alpha Lambda Beta	1933	1934	1935

The COUNCIL CUP for the year 1931-32 was won by the Class of 1933.



GIRLS' INTERCLASS ATHLETICS

A cup is awarded each year to the class having the largest total number of points at the end of the year. These points are earned in scheduled games in soccer, basketball, tennis, baseball, track, volley ball, and other field events. Last year the cup was won by the Seniors. This year we are introducing a new game called badminton.

Stars, class numerals and a green felt monogram on a white background are won by individuals through participation in the games mentioned above, and by the completion of certain tests of athletic achievement.

Through the generosity of the girls' athletic instructor, Miss Reed, an arrangement has been made whereby girls who have spare periods during school hours may have a course in tennis. This gives those who are interested in the game a chance to become better acquainted with it. Miss Reed posts daily a list of those names of the girls who are to play that day and the period they will play. This not only is a systematic program, but gives each and every girl a chance to have instructions. There are classes for beginners and for advanced players. So you can see G. N. S. is making good use of the splendid new courts which were put in about a year and a half ago. There is a tennis tournament each Spring and this year there is a possibility for a tournament for both classes of players.

Archery is another interesting Spring activity for girls. This year we have two targets instead of one. This gives a chance to use one target for beginners and one for advanced players. We are thinking of having a tournament in archery this Spring, which only proves that there is an opportunity for many champions and a sport for every girl.



JUNIOR GIRLS' BASKETBALL TEAM
Top row: H. Lidback, S. Jensen, M. Sturgis, A. Hinds, C. Davis, B. Cook, M. Bickford.
Bottom row: H. Gilpatrick, E. Johnson, H. Johnson, S. Reed, A. MacMillan, A. Renell.

BASKETBALL

OFFICERS

Senior Captain, MARGUERITE BOYCE *Junior Captain*, HELEN JOHNSON
Coach, SARAH REED

SENIOR TEAM

Burnette Bailey, Marguerite Boyce, Stella Nichols, Margery Nash,
Lois Prior, Sebina Regina, Pauline Ross

JUNIOR TEAM

Sena Jensen, Mary Sturgis, Helen Johnson, Ella Johnson, Beatrice Cook,
Eleanor Davis, Henrietta Lidback, Avis Hinds, Arlene MacMillan,
Mary Bickford, Altha Renell, Hazel Gilpatrick

SUMMARY OF GAMES

Seniors	14	Juniors	18
Seniors	18	Juniors	20
Seniors	23	Juniors	22
Seniors	15	Juniors	10
Seniors	15	Juniors	17

A series of inter-division games were played this year before starting the usual class games, thus giving many girls a chance to play, and from those groups the class teams were chosen. The Seniors tried to keep up the old saying, "Seniors always win," but out of five games the Seniors won two and the Juniors three. So the cup goes to the Juniors for 1933. Good luck to you next year, Juniors, and may you keep up the good work!



SENIOR VOLLEY BALL TEAM
Top row: L. Libby, S. Regina, M. Cook.
Bottom row: M. Cutts, M. Nash, L. Prior, S. Reed, B. Bailey.

VOLLEY BALL

OFFICERS

Senior Captain, LOIS PRIOR *Junior Captain*, BEATRICE COOK

SENIOR TEAM

Margery Nash, Burnette Bailey, Sebina Regina, Muriel Cook, Lelia Libby,
Marguerite Boyce, Lois Prior, Betty Syphers, Mary Booker,
Marjorie Cutts, Stella Nichols, Winifred Lamb

JUNIOR TEAM

Audrey Turner, Patricia Elwell, Mary Sturgis, Beatrice Cook, Ella Johnson,
Verna Staples, Ruth Staples, Beverly Soper, Norma Williston,
Arlene MacMillan, Carolyn de Vane, Joanna Stone

SUMMARY OF GAMES

Seniors	15	Juniors	3
Seniors	13	Juniors	15
Seniors	15	Juniors	1

The period after basketball was taken up by volley ball. A series of five games were played, with the Seniors fighting to win, and sure enough, they came out on top by winning two out of three games. That gives the Juniors something to work for next year, doesn't it?



TRACK MEET, MAY 24, 1932

SENIORS, 43; JUNIORS, 28

SUMMARY OF EVENTS

1. 30-yard Dash—Sophie Tarr, 1st; H. Small, 2nd; S. Nichols, 3rd.
2. Baseball Throw—B. Withee, 1st; D. Stacy, 2nd; H. Small, 3rd.
3. 50-yard Dash—H. Guptill, 1st; E. Wall, 2nd; S. Tarr, 3rd.
4. Basketball Throw—C. West, 1st; D. Stacy, 2nd; B. Bailey, 3rd.
5. Broad Jump—H. Guptill, 1st; H. Small, 2nd; B. Bailey, 3rd.
6. Shot-put—C. West, 1st; D. Stacy, 2nd; H. Small, 3rd.
7. High Jump—H. Guptill, 1st; B. Bailey, 2nd; N. Lakeman, 3rd.

BASEBALL

SENIOR TEAM

Cora West, Winifred Cobb, Martha Chesley, Nola Lakeman, Marjorie Moody,
Edna O'Brion, Louise Sproul, Dorothy Stacy, Helen Small,
Sophie Tarr, Edith Wall, Ferne Whitney

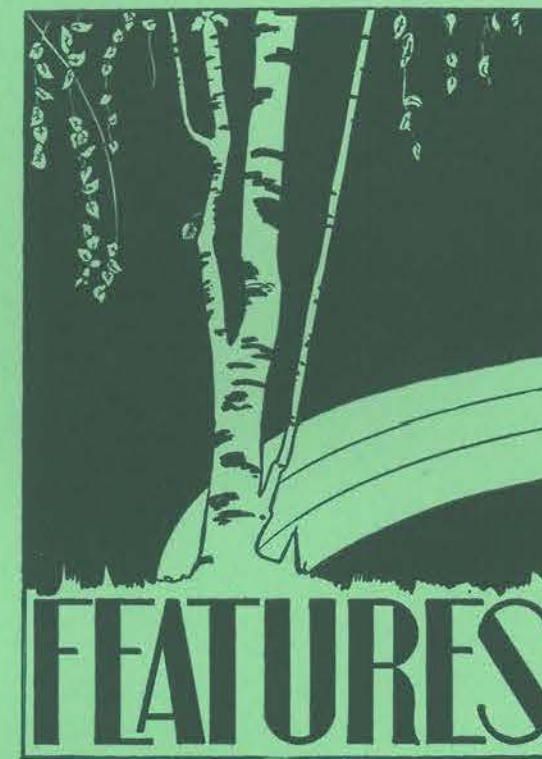
JUNIOR TEAM

Burnett Bailey, Marguerite Boyce, Muriel Cook, Marjorie Cutts, Barbara Harmon,
Stella Nichols, Margery Nash, Lois Prior, Freda Stevens, Pauline Ross

SUMMARY OF GAMES

Seniors	12	Juniors	7
Seniors	14	Juniors	9

Interclass baseball for girls made its initial appearance at G. N. S. in the Spring of 1931. The following Spring baseball was again taken up with great enthusiasm. A series of three games were played. The first game was hard fought and ended with a Senior victory. The Juniors came back to the second game with a treacherous gleam in their eyes, but in spite of their effort, the Seniors stormed over them again; therefore the Seniors were pronounced the champions. Cheer up, Juniors, another year is yet to come and Seniors always win—at least that's what they say!



GREEN AND WHITE

HOME LIFE



Ray Corey



Hooper House Pastime



Joe Lutz



Hold him Nelson!



M. Jean the Barber



Rock Bottom



Behind the Scenes

"What is your favorite indoor sport?"

We asked of many boys.

"What do you do besides school work—

Just make a lot of noise?"

"Oh, no," said they, "you wrong us
there;

We'll show you what we do;"

And so to prove what they had said,

These pictures came to view.

"Sometimes we have a barber shop,

Or make love to a cardboard girl,

Or then you'll find us playing cards

Until each brain's awlirl."

"Sometimes we simply sleep and
sleep—

We sleep though beds do fall;

Or gossip may beguile our time—"

Do you believe that's ail?"



CALENDAR

SEPTEMBER, 1932

- September 13. Signs of life again. Practice Teachers are assembling.
 September 13. Stampeding Seniors arrive for registration at 2.00.
 September 13. Silently (?), fearfully (?), the Juniors creep in at 3.00.
 September 13. Acquainted? Of course, after the Y. W. C. A. get-together this evening.
 September 14. We're off!
 September 24. First dance being given in center by the Massachusetts Club.

OCTOBER

- October 1. Pupils meet teachers; teachers meet pupils. Where? At the Junior Reception—don't you remember?
 October 8. How we sail to Center for the Camp Fire Dance, entertainment and "free eats!"
 October 10. The Dramatic Club members eat, drink, and are merry at their annual banquet held in the dining room.
 October 15. Alpha Lambda Beta boys know how to decorate as well as to give a dandy fraternity dance, don't they?
 October 27. Dr. Ambrose Suhrie again captivates his audience here at G. N. S. with another of his entertaining and instructive educational talks.
 October 27-28. Teachers' Convention, which is being held at Bangor, is attended by several members of our faculty.
 October 29. Moo-oo, bow wow, meow! yes, sir, the Aroostook and Penobscot County Club is giving us an animal dance in Center.

NOVEMBER

- November 5. Witches, goblins, clowns and other queer creatures appear in the gym to attend a Halloween Party.
 November 9. The Civic Committee entertains royally on our Superintendents' Day.
 November 11. Everyone's happy and gay for this is Armistice Day. No school!
 November 16. We come, we see, we enjoy "White Hyacinths" given by the Boston Players in Russell Hall.
 November 17. One quarter ends as the second one begins.
 November 19. Our "Fellas" are giving us a dance. What music, ooo! What fun, mmm!
 November 24. Gobble, gobble, gobble! Thanksgiving Vacation.
 November 28. We have a pleasant surprise in having Mr. and Mrs. Moulton speak to us on India as they know it.
 November 30. Dr. Coombs tells us of the work of the Department of Health.



DECEMBER

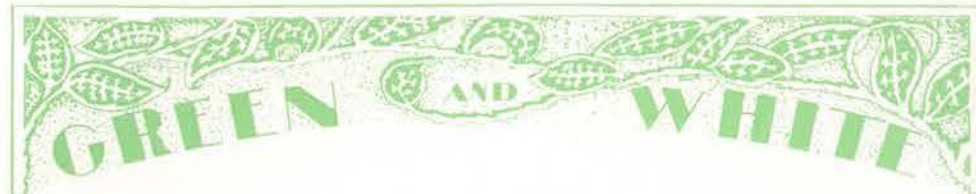
- December 2. The liquor question in Canada vividly portrayed to us by Dr. Ben Spence.
 December 3. The Washington-Hancock Club announced "The zero hour for dancing has arrived. Come to see the Center and dance with us." We did.
 December 6. The Music and Art entertainment is an artistic, unusual and beautifully planned program which does honor to our students and teachers.
 December 20. "Girl Shy," I'll say he is. The Dramatic Club Play proves it.
 December 21. Christmas Party, play, and everything, sponsored by House Committee.
 December 23. A delightful Christmas Cantata presented by the Glee Clubs.

JANUARY, 1933

- January 3. Back to studying. Vacation is over.
 January 6. Basketball game in Gym between Gorham and Fryeburg.
 January 7. For two cents for every foot and one cent for each inch over. Thus we are measured to enter the Lincoln County Club dance.
 January 13. Buses are crowded. We all attend the Cumberland-York Teachers' Convention.
 January 18. The charming play, "As Husbands Go," read by Rachel Crauthers.
 January 19. Paul Revere has reappeared! Plaisted leaps out of Miss Lewis' window to rescue Miss Pike's car from a terrible crash. Hail to the hero!
 January 27. Big Game. Gorham versus Farmington. After the game a dance in Center followed by a banquet for the teams.
 January 28. Bears used for decorations means the Oxford County Club is giving a dance in Center.

FEBRUARY

- February 2. GREEN AND WHITE banquet, after which there is to be a conference for Mr. Dooley and son.
 February 4. Another Basketball game. Gorham versus Salem. This, too, is followed by a dance in Center.
 February 7. Dramatic Club has Theater Party at Jefferson. Then the trip home. Remember the skids and the walk up Normal Hill.
 February 11. Alpha Lambda Beta charge brunettes ten cents, blondes twenty cents, and red heads ten cents plus luxury tax of ten cents for the Fraternity Dance in Center.
 February 14. Boston Varsity Quartet entertains with music popular and classic.
 February 17. Poor picture taking day.
 February 18. WCSH announces the Gorham Normal School Double Quartet, Orchestra and Glee Club. It is a broadcast of which we are all proud.
 February 22. Patriotic program being presented during first period this morning is a grand tribute to Washington, Lincoln and Coolidge.

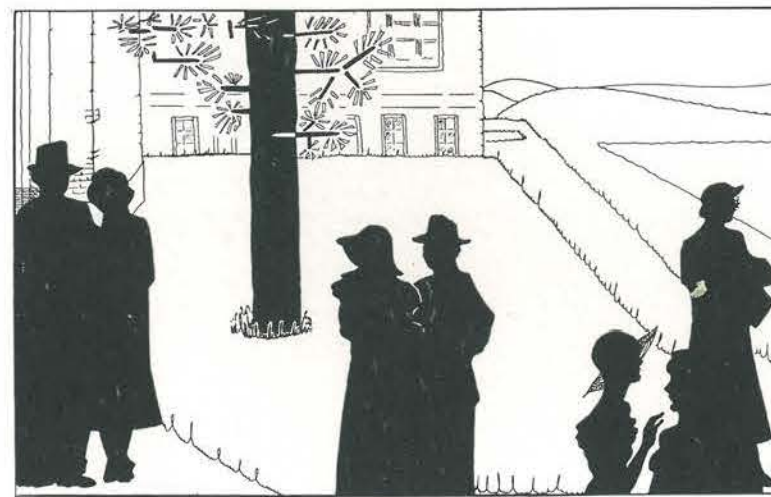


MARCH

- March 3.* Small school tournament being held in the gymnasium today and tomorrow.
- March 9.* Hungry, girls? Y. W. C. A. group is selling hot dogs in Center.
- March 11.* Depression dance in Center. Something new and interesting by the Massachusetts Club.
- March 18.* Jig-saw puzzles, cards and dancing, all to be had at the St. Patrick's Day Party.
- March 22.* Laugh, laugh and laugh. The Fraternity minstrel show—full of them.
- March 25.* Brother, can you spare a dime? The Spring Dance in Center tonight.
- March 29.* No more laughing, no more fun. EXAMINATIONS have begun.

APRIL

- April 1.* Don't be an April Fool. April Fool's party.
- April 5.* "Umpla umbsa soo." The China Shop. That is this year's operetta, you know.
- April 6.* The new practice teachers fare forth to their duties. VACATION begins tonight.
- April 18.* School opens again!
- April 19.* Another holiday. A party is held in the library. The "Fellas" co-star in that remarkable play, "The Lighthouse Keeper."
- April 20.* We tour New York with Doris and Louis—Miss Jordan and Mr. Wieden treated us to more sidelights of the Convention.
- April 21.* Representatives from Boston University entertain us one whole period.
- April 28.* We can at least play at banking—Mrs. Stevens tells us how.
- April 29.* Commuters' Club takes charge in Center. Where was that intermission?

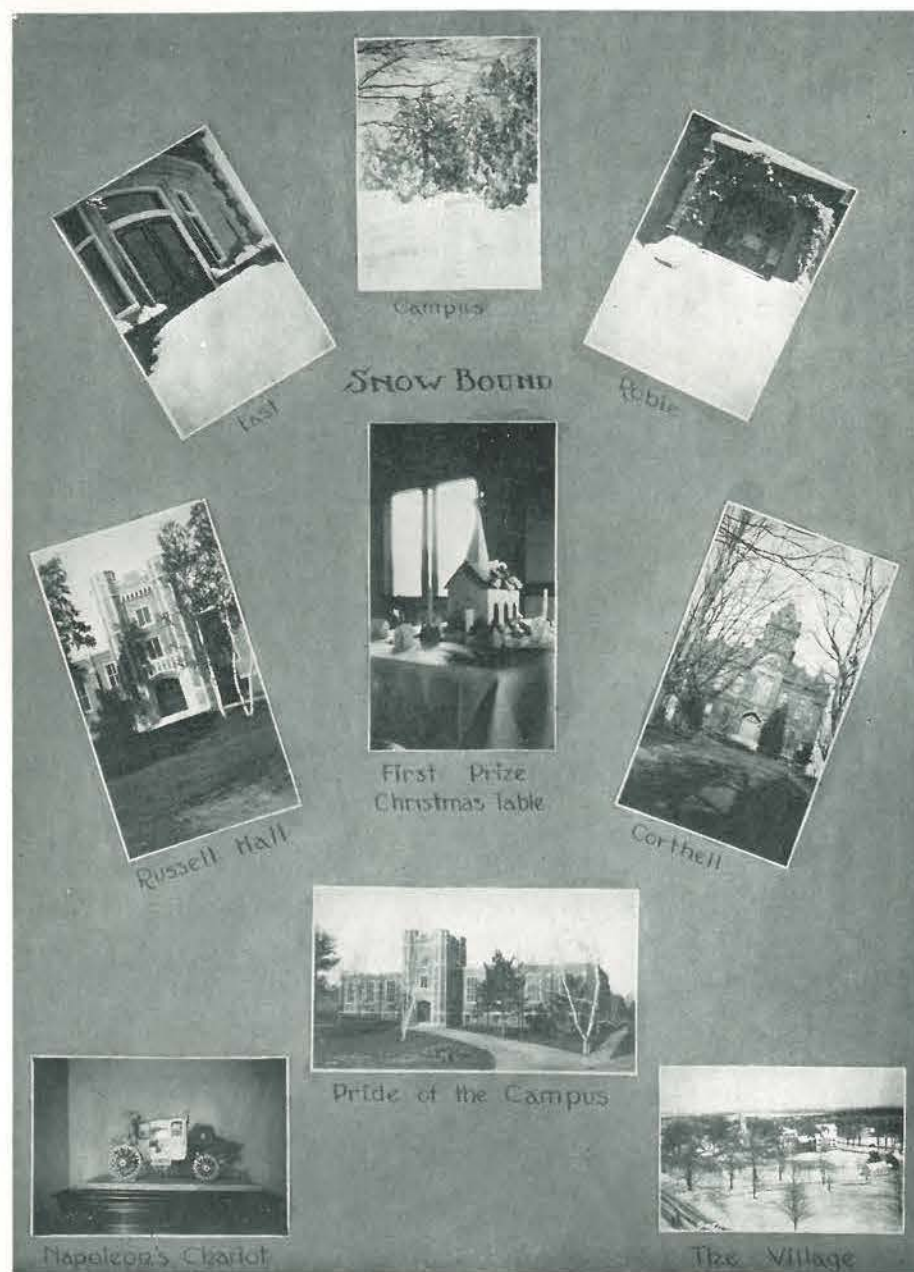


MAY

- May* A knock on the door means catch the kid who hung you the bouquet of ink bottles.
- May 3.* A visit from Dean Lutz of the University of Maine.
- May 4.* Lucia Ames Meade gives an interesting lecture on world peace. We bring pennies for the Chinese children.
- May 6.* Rainbow Dance in Center.
- May 12.* Miss Buck talks on the school health program.
- May 13.* Castine wins the baseball game by eleven points. Oh, well, look at the date.
- May 17.* We stage a snappy comeback and take over Fryeburg.
- May 18.* A Good-Will Program features many of our heretofore modest and retiring Juniors.
- May 19.* Have you a partner for the big event?
- May 20.* You've guessed it! The May Ball is here at last!
- May 21.* Alas! All guests depart.
- May 22.* The Y. W. picnic creates much excitement. Too bad some people had to miss the baseball game. Alpha Lambda Beta vs. Lambda Pi Sigma.
- May 23.* All good drivers are requested to take a turn around the new parking space in order that it might be packed down.
- May 24.* Dramatic Club theater party goes over big. Gorham wins over South Portland.
- May 25.* The conceit of some people! The parking space is as smooth as if it were of concrete.
- May 25.* "G" Club Dance in the Center. This the last appearance of the "Fellas."

JUNE

- June 3.* Get out the sunburn lotion. The Lambda Pi Frat party is here.
- June 10.* Another outing. The Alpha Lambda Beta this time.
- June 16.* Fond parents begin to arrive.
- June 17.* A busy day, Banquet, Principal's Reception, and the Senior Play.
- June 18.* Baccalaureate sermon by Mr. Dubbs.
- June 19.* Commencement. Home! Oh, those diplomas!



THE SCHOOL ON THE HILL

There's a bonny, bonny spot
That we hold most dear,
There are hours and days,
That are full of cheer,
There's a beautiful hill
That will ne'er be forgot,
And the dear old school
In that bonny, bonny spot.

There's a bonny, bonny spot
Where the GREEN AND WHITE
Proudly waves on high
As a beacon light.
May our lives be as true
As its meaning has taught,
While we work and sing
In this bonny, bonny spot.

Oh, the tasks are hard,
And the days are long,
But we conquer all with a cheering song;
And the G. N. S. whate'er her lot
Will be loved for aye,
In that bonny, bonny spot.

B. B. Norris.



Autographs



To the Class of 1933

I wish you all the pleasures and happiness of life and success in your chosen profession.

LOUIS J. CHRISSIKOS, Prop.

L
O
U
I
S'



P
L
A
C
E

WHERE ALL STUDENTS MEET

We serve you the best food and refreshments with the best service for your money.

Steaks	Banana Splits	Fruit
Chops	Royals	Confectionery
Salads	Velvets	Sodas
Soups	Normal Special	Ice Cream
Stews	Sundaes	Pop Corn

Novelties - Films - Cameras - Graduation Gifts

To all the members of the faculty, students and organizations at G. N. S., I wish to express my sincere thanks for the support given me during the last year. May our friendship continue during the next year.



Compliments of
THE ALBERT STUDIO



The Final Test of Any Outing Equipment Is Not What
the Manufacturer Claims for It—But What
Service It Gives to the User

Hanold Outfitting Company

Designers and Manufacturers

STANDISH, MAINE

Outfitters

GIRLS' CAMPS · SCHOOLS · COLLEGES
GYMNASIUM CLOTHING OUTING SPECIALTIES
CAMP UNIFORMS SPORTS WEAR

Hanold Merchandise is sold direct to the Consumer
One Profit · Personal Service · Prompt Deliveries

Official Outfitters Gorham Normal School 1933-34



CRESSEY & ALLEN

EVERYTHING IN MUSIC
AND RADIO

2nd Floor, P. M. & B. Building,
534 Congress Street

PHILIP W. HAWKES
GROCERIES - PROVISIONS

Gorham, Maine
TELEPHONE 57

Compliments of
Deering Ice Cream Co.

J. H. McDONALD CO.
F. J. MELAUGH, Treas.

SEA FOOD
158 Commercial St., Portland, Me.

BEST WISHES OF
Carswell's Drug Store

Compliments of
GORHAM GARAGE
IRA C. ALDEN, Prop.

Compliments of
**"The Green & White
Store"**

ELLA RANKIN, Prop.

SANBORN'S
CLEANSING, PRESSING, DYEING
AND REPAIRING
*High Grade Work at
Reasonable Prices*

MEN'S TAILOR MADE SUITS & TOP COATS
\$15.00 — \$40.00



Compliments of
Gorham Savings Bank

FRED W. SMALL
ATTORNEY AND COUNSELLOR
AT LAW
Corner Main and South Streets
Gorham, Maine



*Strictly a woman's store specializing in stylish apparel
of quality so entirely dependable as to make
possible our guarantee of satisfaction
to every customer*

Compliments of
**Parker's Home Bakery
and Lunch Room**

Gorham, - - - Maine

Gorham Hardware Co.
ERNEST J. BRAGDON, Prop.
ELECTRICAL, RADIO AND
PLUMBING SUPPLIES

State Street, Gorham
TELEPHONE 102-2



School Supplies Distinctive Stationery
Fountain Pens

A LARGE ASSORTMENT OF GREETING CARDS

FINE CHOCOLATES AND CANDIES

EASTMAN CAMERAS AND FILMS
Quality Developing, Printing, Enlargements

GEORGE S. BURNELL
GORHAM, MAINE

FIRST CLASS HAIRCUTTING

Ask the Normal Crowd

Maurice Dixon, Prop.

P. MOODY, Assistant

"On the Way to Normal Hill"

Compliments of

H. K. RICE, D.M.D.

Tel. 178 54 State Street

**Gorham Electric and
Radio Shop**

Elwood A. Neal, Prop.

Kodak Films — Camera Supplies

Developing and Printing

24-HOUR SERVICE

Try Us Once — You'll Come Again

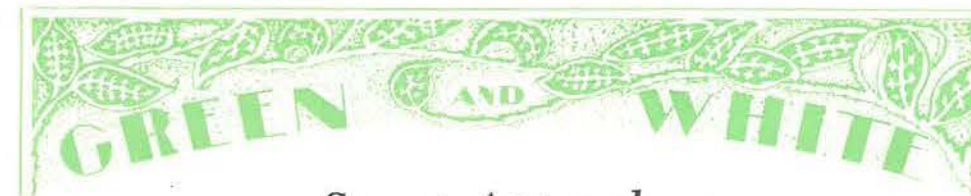
Compliments of

**Foster-Avery's
THE SYSTEM CO.**

516 Congress Street, Portland, Me.

Our policy is not to sell apparel which is
lowest in price, but apparel which
is best for the least.

(THERE'S A DIFFERENCE)



Smart Apparel—

FOR SCHOOL, SPORT AND BUSINESS WEAR

Exclusive in Character—But Not Expensive

Special prices to Students for Commencement

BENOIT'S

Westbrook

Portland

The Sporting Goods Store

HEADQUARTERS FOR SCHOOL ATHLETIC SUPPLIES

Write for Catalogue

THE JAMES BAILEY COMPANY

264-266 Middle Street,

Portland, Maine

Compliments of

PORTEOUS, MITCHELL & BRAUN CO.

Compliments of

The Cotton Department Stores

Westbrook and Gorham

The Randall Teachers' Agency

H. H. RANDALL, Manager

52½ Libby Bldg., Congress Square,

Portland, Maine



WRIGHT & DITSON

Largest Athletic Goods House
in New England

Boston Cambridge Worcester Providence

Compliments of

DR. C. J. BOUFFARD

GORHAM, MAINE

Compliments of

C. S. NEAL

GORHAM

Telephone 178

OWEN, MOORE & CO.

PORTLAND, MAINE

BETTER FASHIONS FOR
JUNIORS

HARRY RAE BURN

Successor to
BROWN, COSTUMER

*Costumes, Make-up, Material
and Wigs*

542½ Congress Street, Portland
TELEPHONE FOREST 6614

FESSENDEN'S

*Dennison Goods, Fountain Pens,
Stationery, Greeting Cards,
and Tallies*

497 Congress Street

HARMON C. CROCKER

Trade Composition

Linotype, Ludlow, Thompson Caster,
Elrod, Make-up

394 FORE ST., PORTLAND, MAINE



Printwell Printing Company

JOHN H. DOOLEY, MANAGER

Printers of

"The Green and White"

9 TEMPLE STREET, PORTLAND, MAINE
TELEPHONE CONNECTION

Engraving by---

PORTLAND ENGRAVING CO.

12 Monument Square, Portland, Maine

MAKERS OF FINE ENGRAVINGS FOR SCHOOL ANNUALS

ROBERT BURLIN & SON

Book Binders

Paper Rulers

301 CONGRESS STREET, BOSTON, MASS.



