

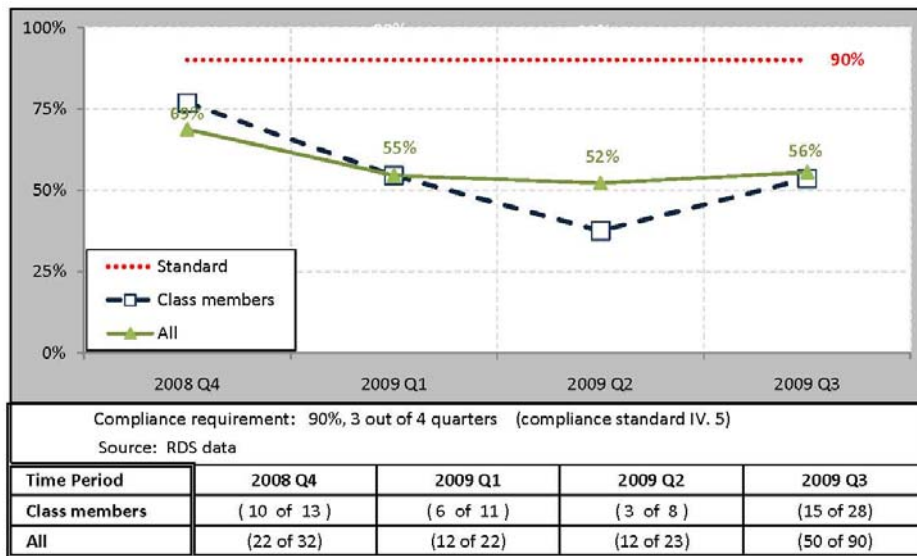
SUBJECT: ISP Indicators/ Combined Report

DATE: May 4, 2009

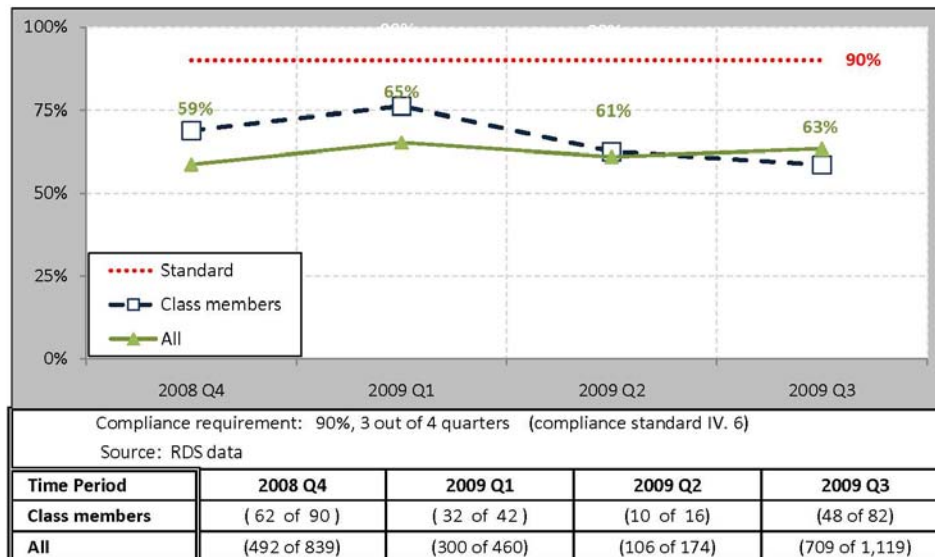
Quarterly data is compared for eight consent decree standards across three goal areas. In each graph, the **red dotted line** represents the compliance standard, while the AMHI class members (persons admitted to AMHI or RPC on or after 1/1/88) are shown with a **dashed blue line**. All individuals receiving the service (both class members and non-class members) are shown with a **solid green line**, "All". In each graph, the green percentages refer to the green line representing "All".

Goal 1: Clients access needed services

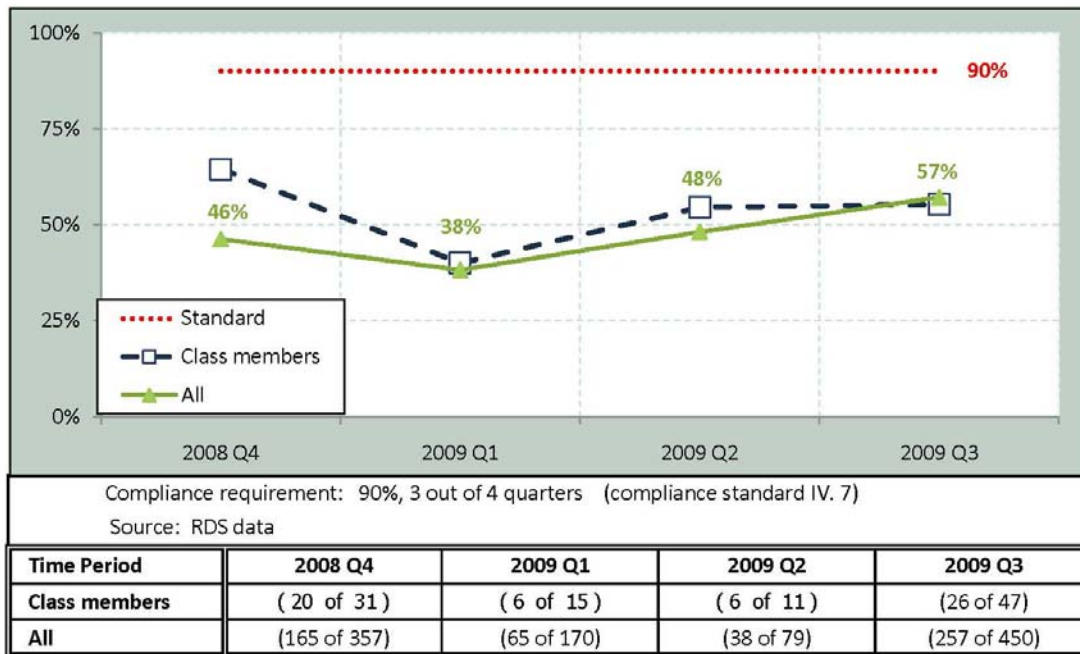
Indicator 1: Percent of hospitalized adults assigned CI services within 2 working days



Indicator 2: Percent of non-hospitalized adults who were assigned CI services within 3 working days

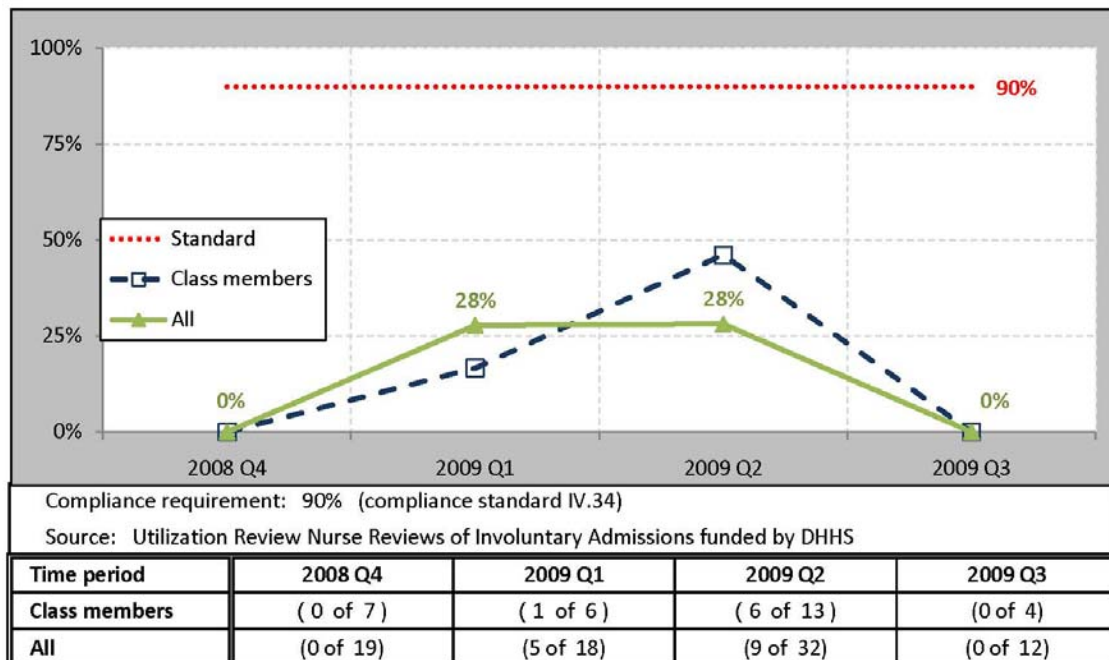


Indicator 3: Percent of adults not assigned on time, but assigned within an additional 7 working days

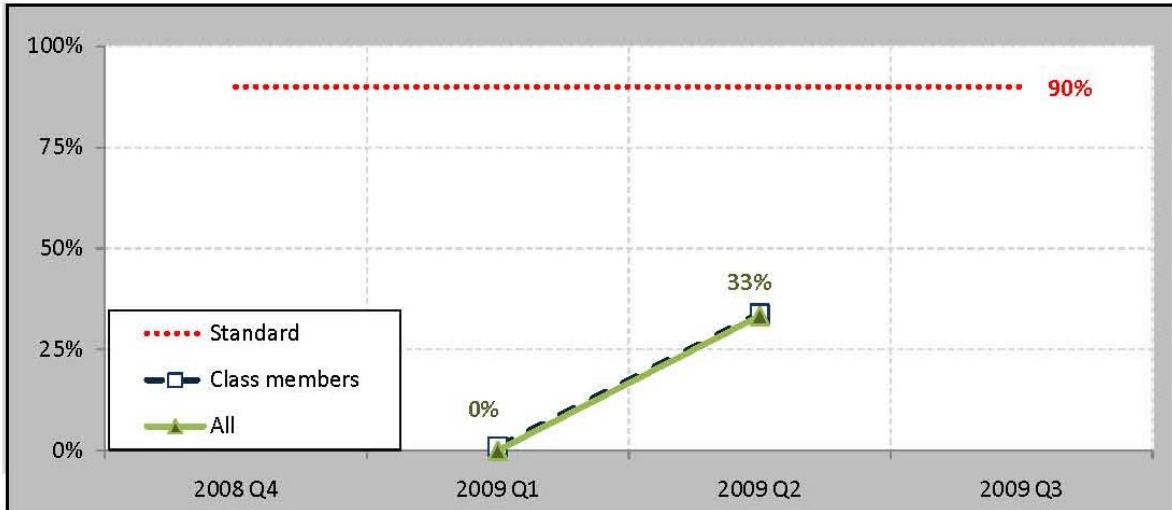


Goal 2: Continuity of Care Is Provided Between Crisis, the Community Support System and Hospitals with Psychiatric Units

Indicator 4: Percent of adults admitted involuntarily with existing ISPs for whom community hospital obtained ISP (patient authorized).



Indicator 5: Percent of adults admitted involuntarily to community hospitals for whom treatment and discharge plans were consistent with their ISPs.



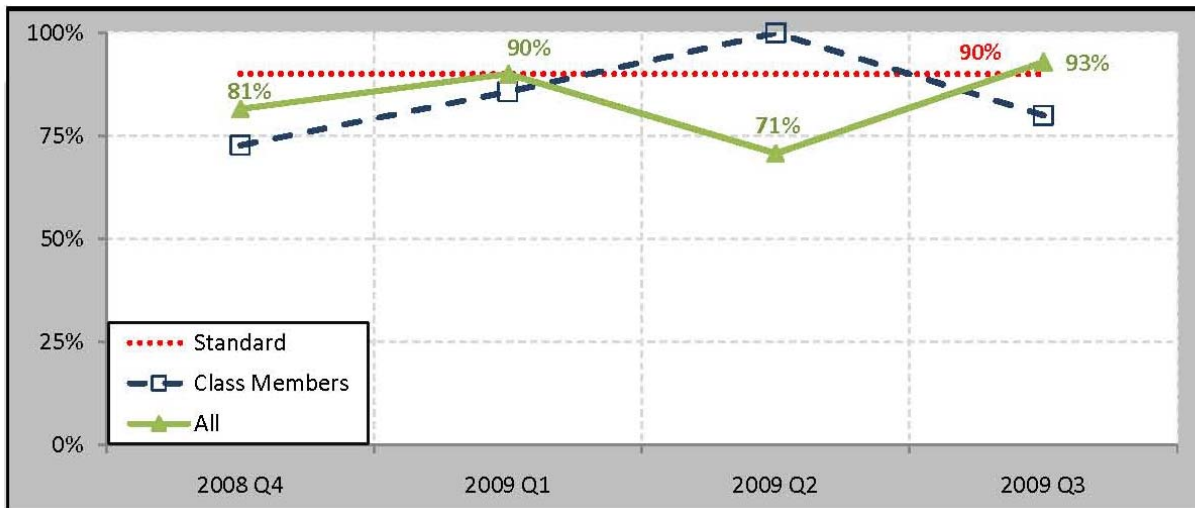
Compliance requirement: 90% (compliance standard IV.34)

Source: Utilization Review Nurse Reviews of Involuntary Admissions funded by DHHS

Time period	2008 Q4	2009 Q1	2009 Q2	2009 Q3
Class members	(0 of 0)	(0 of 1)	(2 of 6)	(0 of 0)
All	(0 of 0)	(0 of 5)	(3 of 9)	(0 of 0)

** No ISPs received these quarters.*

Indicator 6: Percent of instances where CI worker involved in discharge planning of adults admitted involuntarily to community hospital



Compliance requirement: 90% (compliance standard IV.34)

Source: Utilization Review Nurse Reviews of Involuntary Admissions funded by DHHS

Time period	2008 Q4	2009 Q1	2009 Q2	2009 Q3
Class Members	(8 of 11)	(6 of 7)	(16 of 16)	(4 of 5)
All	(22 of 27)	(18 of 20)	(29 of 41)	(13 of 14)

Goal 3: Treatment planning is timely and individualized

Indicator 7: Percent of ISPs completed w/in 30 days of service request



Compliance requirement: 90%, 3 out of 4 quarters (compliance standard IV. 8)

Source: RDS data

Time Period	2008 Q4	2009 Q1	2009 Q2	2009 Q3
Class members	114 of 118	45 of 46	31 of 31	22 of 23
All	548 of 574	411 of 417	269 of 277	244 of 249

Indicator 8: Percent of adults for whom 90 day ISP completed w/in specified time frames



Compliance requirement: 90%, 3 out of 4 quarters (compliance standard IV. 9)

Source: RDS data

Time Period	2008 Q4	2009 Q1	2009 Q2	2009 Q3
Class members	713 of 1,393	478 of 977	250 of 613	241 of 691
All	3,038 of 6,407	2,529 of 5,430	1,670 of 3,630	1,172 of 3,418