

12-18-2013

USM and Community College Comparison Data

University of Southern Maine

Follow this and additional works at: https://digitalcommons.usm.maine.edu/direction_package

Recommended Citation

University of Southern Maine, "USM and Community College Comparison Data" (2013). *Direction Package*.
2.
https://digitalcommons.usm.maine.edu/direction_package/2

This Article is brought to you for free and open access by the Institutional Memory at USM Digital Commons. It has been accepted for inclusion in Direction Package by an authorized administrator of USM Digital Commons. For more information, please contact jessica.c.hovey@maine.edu.

USM and Community College Comparison Data

Data From:

IPEDS Data Center

National Center for Education Statistics, U.S. Department of Education

Retrieved 12/12/2013 and 12/18/2013

and

USM Undergraduate Admission Reports

Description of Data

Data were requested regarding USM and the three community colleges within our primary service region (i.e., Southern Maine Community College, York County Community College, and Central Maine Community College). The following tables and charts provide information regarding overall enrollment trends, undergraduate non-degree student trends, Retention, Graduation within 150% time, and the number of community college students who apply to and enroll at USM. Additional work is underway to track the progress of community college transfers students through USM.

Data Sources: The primary data for this report was obtained from the IPEDS Data Center. Admission data came from USM Admission Reports.

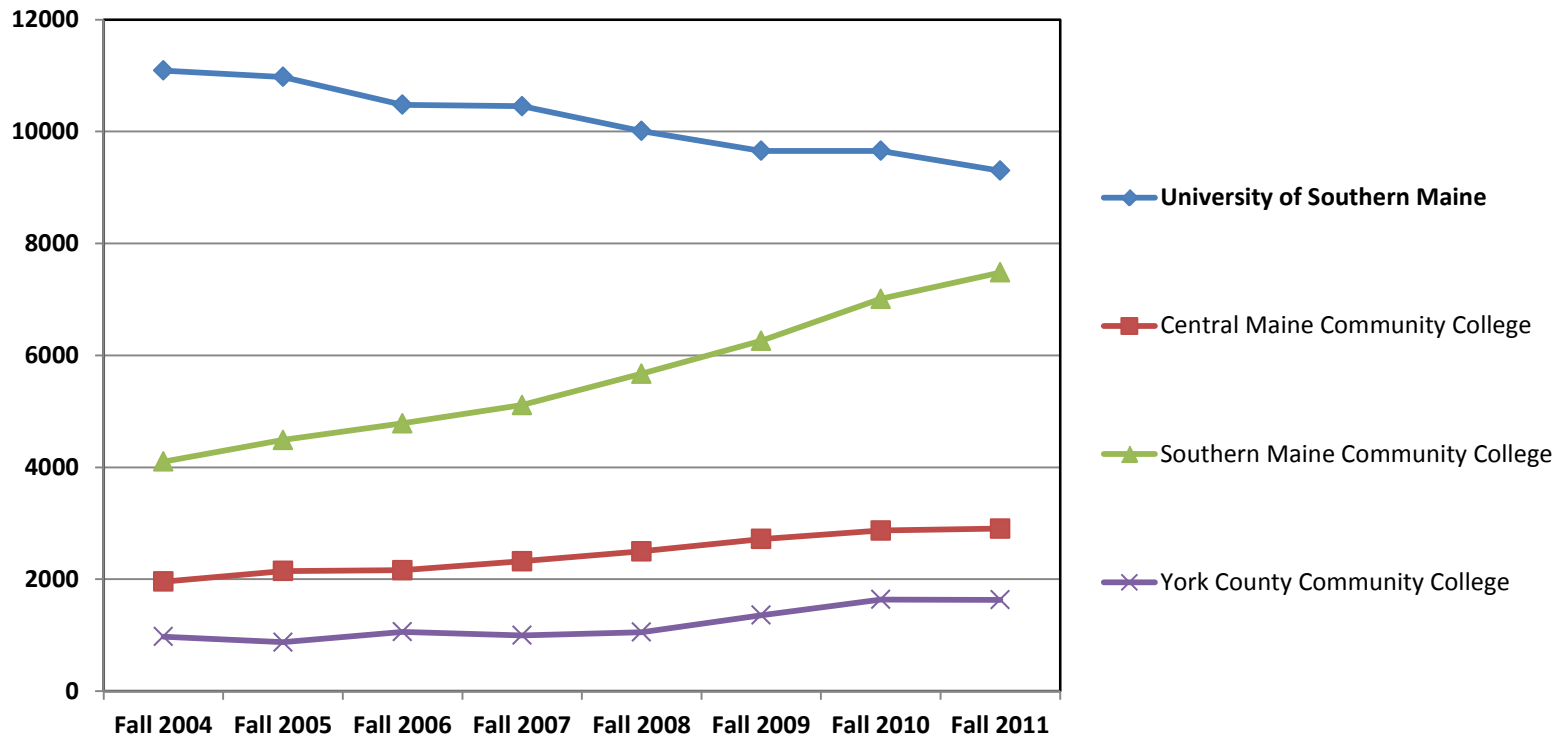
Enrollment Trends

Institution	Fall 2004	Fall 2005	Fall 2006	Fall 2007	Fall 2008	Fall 2009	Fall 2010	Fall 2011
USM	11089	10974	10478	10453	10009	9655	9654	9301
CMCC	1958	2146	2160	2321	2500	2720	2870	2905
SMCC	4103	4487	4785	5113	5673	6261	7010	7482
YCCC	975	874	1061	998	1054	1358	1637	1631

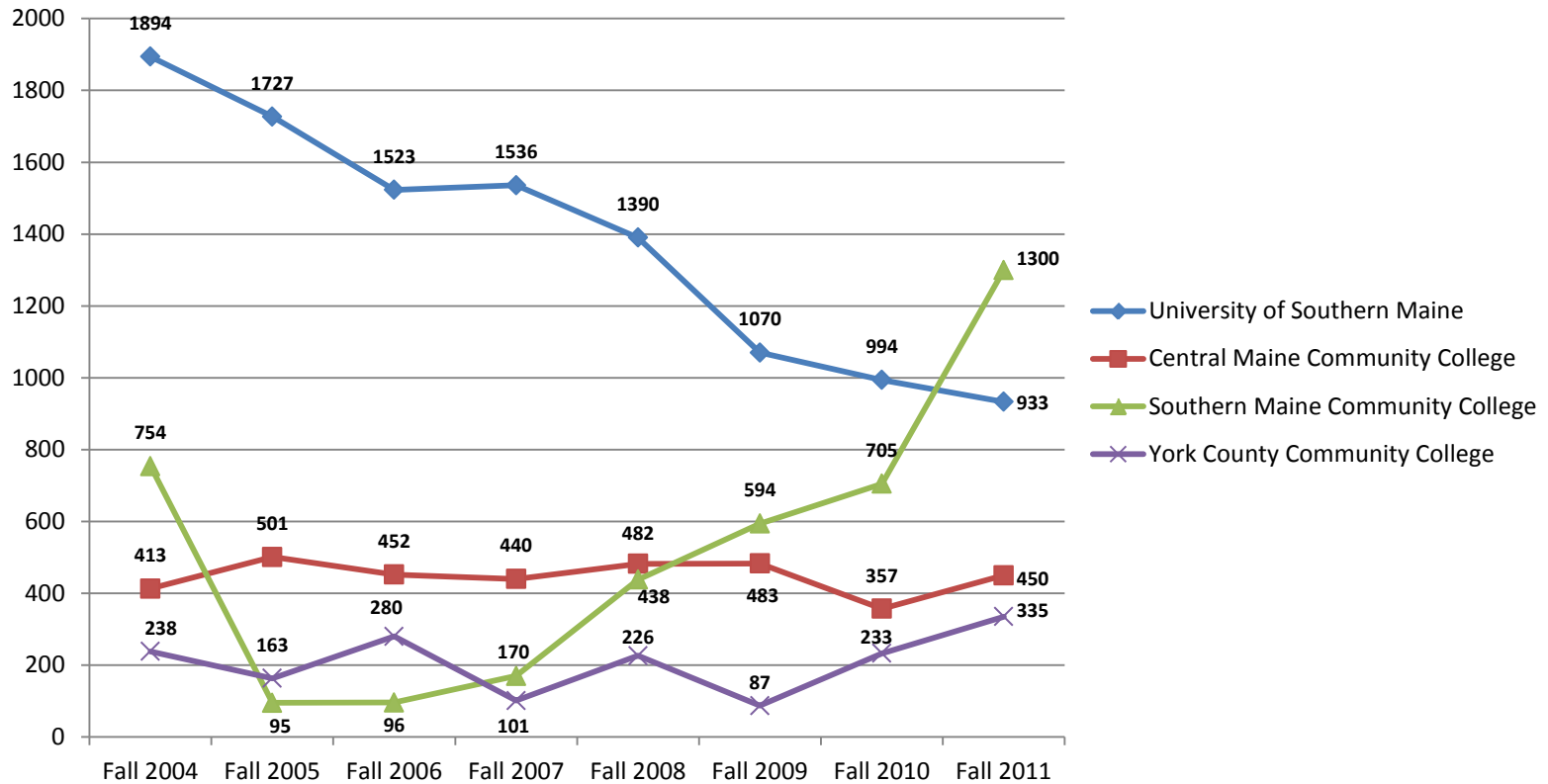
Source: U.S. Department of Education; National Center for Education Statistics

<http://nces.ed.gov/ipeds/datacenter/Trend.aspx?hfSelectedIds=81311|11|11>

Enrollment Trends



Enrollment Trends- *Undergraduate Non-Degree Students*



Source: U.S. Department of Education; National Center for Education Statistics
<http://nces.ed.gov/ipeds/datacenter/Trend.aspx?hfSelectedIds=81311|11|/>

First Time Degree Seeking Students Fall 2011 and Fall 2012 *(est)*

Institution	Fall 2011		Fall 2012 (estimate on IPEDS)	
	Part-time	Full-Time	Part-Time	Full-Time
USM	49	661	32	853
CMCC	197	505	161	391
SMCC	327	1066	376	995
YCCC	101	181	318	363

Source: U.S. Department of Education; National Center for Education Statistics

<http://nces.ed.gov/ipeds/datacenter/Trend.aspx?hfSelectedIds=81311|11|/>

Fall to Fall Retention Rates Full-Time Students

Institution	Fall 2004	Fall 2005	Fall 2006	Fall 2007	Fall 2008	Fall 2009	Fall 2010	Fall 2011
USM	68%	67%	66%	67%	64%	65%	70%	66%
CMCC	81%	53%	58%	62%	50%	64%	71%	60%
SMCC	58%	57%	54%	52%	54%	51%	58%	54%
YCCC	54%	46%	36%	53%	43%	90%	53%	54%

Source: U.S. Department of Education; National Center for Education Statistics

<http://nces.ed.gov/ipeds/datacenter/Trend.aspx?hfSelectedIds=81311|11|11>

Fall to Fall Retention Rates Part-Time Students

Institution	Fall 2004	Fall 2005	Fall 2006	Fall 2007	Fall 2008	Fall 2009	Fall 2010	Fall 2011
USM	44%	40%	50%	39%	45%	47%	44%	49%
CMCC	71%	51%	60%	46%	52%	59%	55%	69%
SMCC	38%	40%	38%	45%	43%	43%	36%	48%
YCCC	44%	36%	70%	38%	30%	52%	55%	43%

Source: U.S. Department of Education; National Center for Education Statistics

<http://nces.ed.gov/ipeds/datacenter/Trend.aspx?hfSelectedIds=81311|11|11>

Graduation Rates w/in 150% of Time First-time/Full-Time Students

Institution	August 31, 2008	August 31, 2009	August 31, 2010	August 31, 2011
USM (<i>Baccalaureate Degree</i>)	31%	34%	34%	37%
CMCC (<i>Associate Degree</i>)	27%	27%	24%	25%
SMCC (<i>Associate Degree</i>)	23%	19%	20%	19%
YCCC (<i>Associate Degree</i>)	15%	17%	5%	7%

Source: U.S. Department of Education; National Center for Education Statistics

<http://nces.ed.gov/ipeds/datacenter/Trend.aspx?hfSelectedIds=81311|11|11>

Applications to Enrolled 2009-2013

SMCC

	2009	2010	2011	2012	2013
Applications	283	301	325	404	311
Admits	210	231	236	312	245
Enrolled	159	178	160	241	196
Yield <i>(% Admits who Enrolled)</i>	75.7%	77%	67.8%	77.2%	80%

Source: USM Admission Report

Applications to Enrolled 2009-2013

CMCC

	2009	2010	2011	2012	2013
Applications	101	105	106	117	81
Admits	88	83	91	98	57
Enrolled	71	60	56	75	45
Yield <i>(% Admits who Enrolled)</i>	80.7%	72.3%	61.5%	76.5%	78.9%

Source: USM Admission Report

Applications to Enrolled 2009-2013

YCCC

	2009	2010	2011	2012	2013
Applications	47	71	66	64	53
Admits	31	50	53	47	39
Enrolled	20	38	33	34	34
Yield <i>(% Admits who Enrolled)</i>	66.7%	76%	62.3%	72.3%	87.2%

Source: USM Admission Report