


1858

Cornell's First Steps in Geography

Sarah Sophia Cornell

Follow this and additional works at: https://digitalcommons.usm.maine.edu/oml_collections

 Part of the [Canadian History Commons](#), [Cultural History Commons](#), [History of Religion Commons](#), [Other History Commons](#), and the [United States History Commons](#)

Recommended Citation

Cornell, Sarah Sophia, "Cornell's First Steps in Geography" (1858). *Osher Map Library Collection Books*. 24.
https://digitalcommons.usm.maine.edu/oml_collections/24

This Book is brought to you for free and open access by the Osher Map Library and Smith Center for Cartographic Education at USM Digital Commons. It has been accepted for inclusion in Osher Map Library Collection Books by an authorized administrator of USM Digital Commons. For more information, please contact jessica.c.hovey@maine.edu.

CORNELL'S
FIRST STEPS
IN
GEOGRAPHY.

BY
S. S. CORNELL,
CORRESPONDING MEMBER OF THE AMERICAN GEOGRAPHICAL AND STATISTICAL SOCIETY.



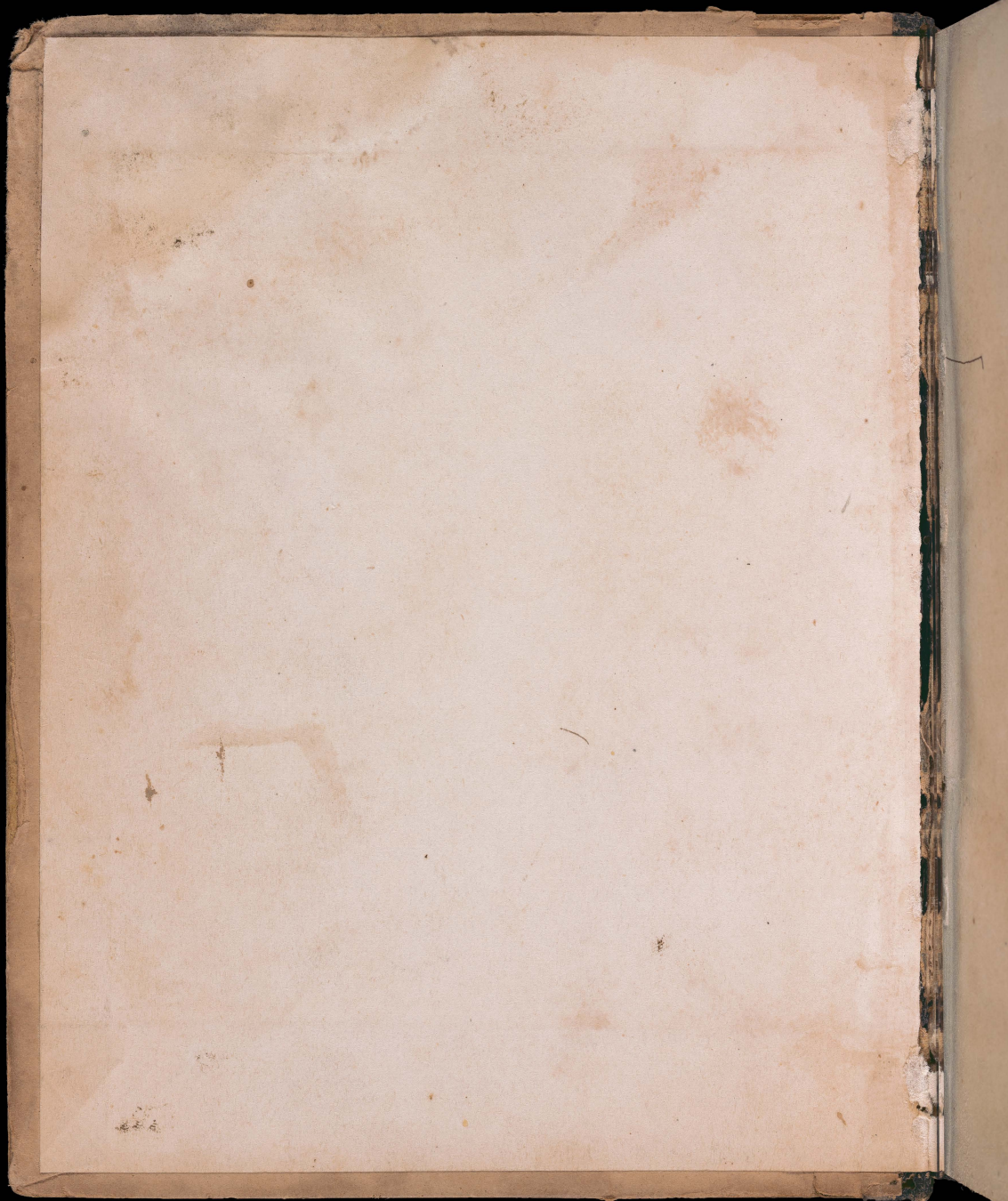
NEW YORK:
D. APPLETON AND COMPANY,
443 & 445 BROADWAY.







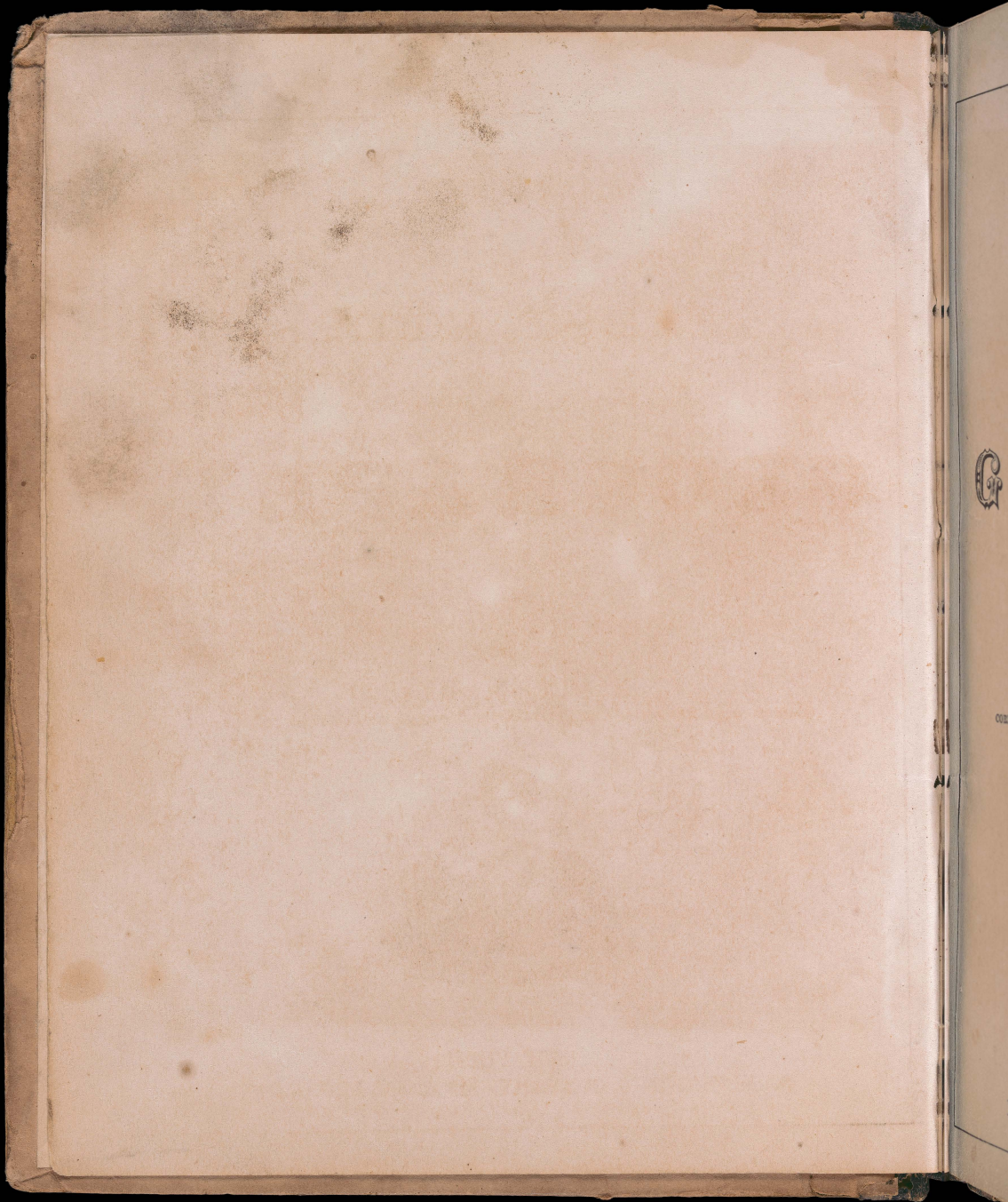




1858 at/as

25-

#97



CORNELL'S

FIRST STEPS

IN

GEOGRAPHY.

BY

S. S. CORNELL,

CORRESPONDING MEMBER OF THE AMERICAN GEOGRAPHICAL AND STATISTICAL SOCIETY.



NEW YORK:

D. APPLETON & COMPANY, 443 & 445 BROADWAY.

PREFACE.

THIS little work has been prepared at the request of numerous teachers, expressly for the use of Primary Schools.

It will be found, upon examination, exceedingly simple and easy to be committed to memory. The definitions of the Natural Divisions of the Earth's Surface are as brief as possible, and they are fully illustrated by means of pictures and diagrams: the one showing the object as it appears in nature; the other, the manner of representing it on a map. The definitions are also given in the form of a review. This double method is designed to assist the memory of the youthful student, and enable him thoroughly to master the subject.

The Maps are clear and beautiful, and all that they contain is asked about in the accompanying lessons.

LIST OF MAPS.

- | | |
|--|--------------------------|
| 1. THE WORLD, showing the Land and Water. | 10. AFRICA. |
| 2. THE WORLD, showing the Continents. | 11. BRITISH AMERICA. |
| 3. THE WORLD, showing the Grand Divisions. | 12. UNITED STATES. |
| 4. THE WESTERN HEMISPHERE. | 13. THE EASTERN STATES. |
| 5. THE EASTERN HEMISPHERE. | 14. THE MIDDLE STATES. |
| 6. NORTH AMERICA. | 15. THE SOUTHERN STATES. |
| 7. SOUTH AMERICA. | 16. THE WESTERN STATES. |
| 8. EUROPE. | 17. THE TERRITORIES. |
| 9. ASIA. | 18. OCEANIA. |

Entered, according to Act of Congress, in the year 1853,

By S. S. CORNELL,

In the Clerk's Office of the District Court for the Southern District of New York.

CORNELL'S FIRST STEPS IN GEOGRAPHY.



LESSON I.

Spell the following words :

Earth,	Ge-og'ra-phy,
Plan'et,	De-scrip-tion,
Sci'ence,	Com-pos'ed.

What is the Earth ?

The Earth is the planet on which we live.

What is the shape of the Earth ?

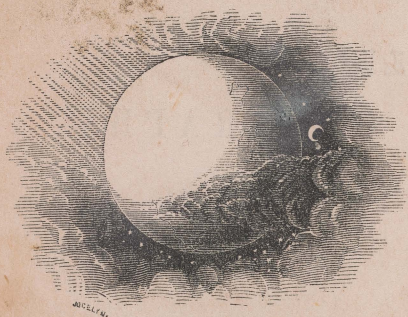
The Earth is round, like an orange or a ball.

What science teaches us about the surface of the Earth ?

Geography.

What is Geography ?

Geography is a description of the surface of the Earth.



What do you mean by the surface of the Earth?
The outside of the Earth.

Do you live on the surface of the Earth?
Yes.

Of what is the surface of the Earth composed?

Land and Water.

LESSON II.

Spell the following words :

Draw'ings,	Di-rec'tions,
Di-vi'ded,	To'ward,
Prin'ci-pal,	Be-tween'.

How is the Earth's surface shown in books?
By drawings called Maps.

What is a Map?

A Map is a drawing of the Earth's surface.

What do Maps show?

Maps show how the Earth's surface is divided.

What are the principal directions on a Map?
North, East, South and West.

What part of a Map is North?

Toward the top part.

What part of a Map is East?

Toward the right hand.

What part of a Map is South?

Toward the bottom.

What part of a Map is West?

Toward the left hand.

LESSON III.

What other directions are there on Maps?
North-east, South-east, North-west and South-west.

What part of a Map is North-east?

Toward the right hand corner at the top.

What part of a Map is South-east?

Toward the right hand corner at the bottom.

What part of a Map is North-west?

Toward the left hand corner at the top.

What part of a Map is South-west?

Toward the left hand corner at the bottom.

Between what points is North-east?

Between the North and the East.

Between what points is South-east?

Between the East and the South.

Between what points is North-west?

Between the North and the West.

Between what points is South-west?

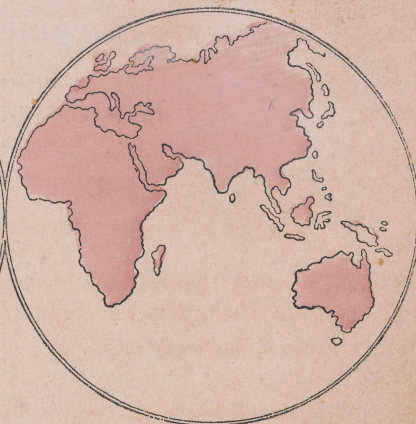
Between the South and the West.

MAP OF THE WORLD,

Showing the Land and Water.



The Western Hemisphere.



The Eastern Hemisphere.

LESSON IV.

Spell the following words:

Col'or-ed,	Hem'i-sphere,
Un-col'or-ed,	Be-cause,
Sphere,	Globe.

What is the above Map called?

Map of the World.

What does it show?

It shows the Land and Water on the Earth.

What does the colored part of the Map show?

The Land.

What does the uncolored part show?

The Water.

How much more Water is there than Land?

Three times as much.

How is the above Map divided?

Into two parts.

What are they called?

One is called the Western Hemisphere and the other the Eastern Hemisphere.

Of what two words is Hemisphere composed?

Hemi and sphere.

What does Hemi mean?

Hemi means half.

What does Sphere mean?

Sphere means a round body.

What, then, does Hemisphere mean?

Hemisphere means half a sphere.

What is the Earth sometimes called?

A Sphere or Globe.

Why?

Because it is round like a Sphere or Globe.

What is a Map of the Western half of the Earth called?

The Western Hemisphere.

What is a Map of the Eastern half of the Earth called?

The Eastern Hemisphere.

MAP OF THE WORLD,

Showing the Continents.



The Western Hemisphere.



The Eastern Hemisphere.

LESSON V.

Spell the following words:

Con'ti-nent,	Aus-tra/li-an,
Aus-tra/li-a,	Sur-round'ed.

What is the above Map called?

Map of the World.

What does it show?

It shows the names of the largest three bodies of Land on the Earth.

What are their names?

The Western, the Eastern and the Australian Continent.

What is a Continent?

A Continent is a large body of land surrounded by water.

How many Continents are there?

There are three Continents.

What Continent is in the Western Hemisphere?

The Western Continent.

What Continents are in the Eastern Hemisphere?

The Eastern and the Australian Continent.

In what part of the Western Hemisphere is the Western Continent?

In the northern and the eastern part.

In what part of the Eastern Hemisphere is the Eastern Continent?

In the northern and the western part.

In what part of the Eastern Hemisphere is Australia?

In the south-eastern part.

In what direction from the Western is the Eastern Continent?

It is east.

In what direction from the Eastern Continent is Australia?

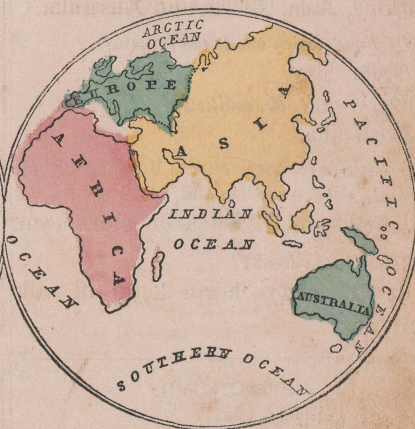
It is south-east.

MAP OF THE WORLD,

Showing the Grand Divisions and the Oceans.



The Western Hemisphere.



The Eastern Hemisphere.

LESSON VI.

Spell the following words:

America, a-mer'e-ka.

Africa, af're-ka.

Europe, u'rope.

Ocean, o'shuu.

Asia, a'she-a.

What does the above Map show?

It shows how the Continents are Byded.

How is the Western Continent divided?

Into North America and South America.

How is the Eastern Continent divided?

Into Europe, Asia and Africa.

What are these divisions called?

The Grand Divisions of the Earth.

How many Grand Divisions are there in the Western Hemisphere?

Two.

How many Grand Divisions are there in the Eastern Hemisphere?

Four.

How many Grand Divisions of land are there on the Earth?

Six.

Mention them.

North America, South America, Europe, Asia, Africa and Australia.

Of these, which one is the largest?

Asia.

Which one is the smallest?

Australia.

What else is shown on the Map, besides the Grand Divisions of the land?

The Grand Divisions of the Ocean.

What is the Ocean?

It is a very large body of salt water.

LESSON VII.

Spell the following words:

Atlantic, at-lan'tik.

Pacific, pa-cif'ic.

Arctic, ark'tik.

Indian, in'de-an.

How is the Ocean divided?

Into five parts.

What is each part called?

Each part is called an Ocean.

What are the names of these five Oceans?

The Arctic, the Pacific, the Indian, the Southern and the Atlantic Ocean.

Where is the Arctic Ocean?

In the northern part of the Western and the Eastern Hemisphere.

Where is the Pacific Ocean?

It is in the eastern part of the Eastern Hemisphere, and the western part of the Western Hemisphere.

Where is the Indian Ocean?

In the central part of the Eastern Hemisphere.

Where is the Southern Ocean?

In the southern part of the Eastern and the Western Hemisphere.

Where is the Atlantic Ocean?

In the eastern part of the Western Hemisphere and the western part of the Eastern Hemisphere.

In what direction from North America is the Arctic Ocean?

North.

In what direction from Europe and Asia is the Arctic Ocean?

North.

In what direction from Asia is the Pacific Ocean?

East.

In what direction from Africa is the Indian Ocean?

East.

In what direction from Africa and Europe is the Atlantic Ocean?

West.

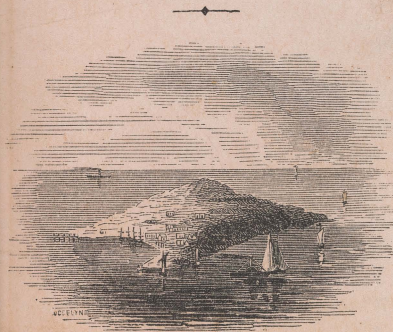
In what direction from North or South America is the Pacific Ocean?

West.

LESSON VIII.

Spell the following words:

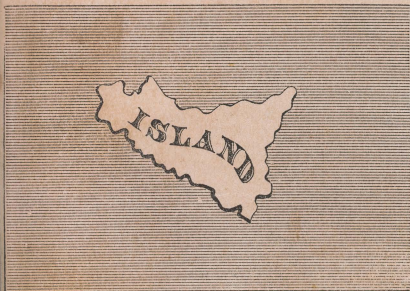
Isl'and,	Isth'mus,
Pen-in'-su-la,	Con-nect'ing.



Here is the Picture of some land surrounded by water. It is called an Island.

What is an Island?

An Island is land surrounded by water.



Here is a Map of an Island.

By what is an Island surrounded?
By Water.



Here is a Picture of a portion of land something like an Island, only it is not quite surrounded by water. It is called a Peninsula.

What is a Peninsula?

A Peninsula is land not quite surrounded by water.

What is an Isthmus?

An Isthmus is land which joins a Peninsula to the main land.



Here is a Map of a Peninsula and an Isthmus.

What is land called which is almost surrounded by water?

What is land called when quite surrounded by water?

LESSON IX.

Spell the following words :

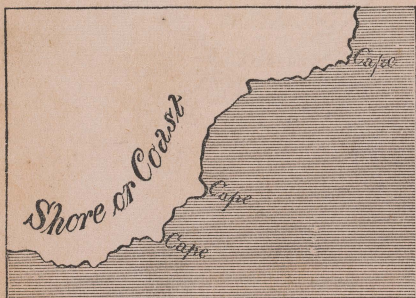
Pro-jects',	Vol-ca'no,
Moun'tain,	Lav'a.



Here is the Picture of a Cape.

What is a Cape?

A Cape is a point of land which projects into the water.



Here is a Map of a portion of some country, and on its coast you see three Capes.

What is a point of land which projects into the water called?



Here is a Picture of some Mountains.

What is a Mountain?

A Mountain is land much higher than the surrounding country.

What is a Mountain Range or Chain?

Many Mountains joined together.

What is a Volcano?

A Volcano is a mountain which sometimes sends forth fire, smoke, ashes and lava.



Here is a Map of a Mountain Chain.

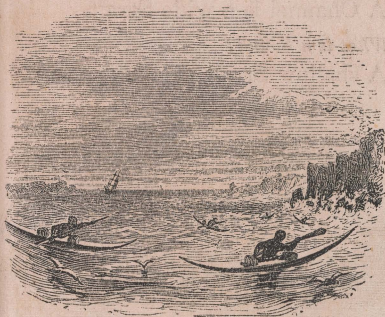
Mention the names of the Natural Divisions of the land.

Continent, Island, Peninsula, Isthmus, Cape and Mountain.

LESSON X.

Spell the following words :

Sea,	Ex-tend'ing,
In-clos'ed,	Gulf,
Strait,	Sep'a-rates.



Here is a Picture of a body of water, called a Sea.

What is a Sea?

A Sea is a large body of water, next in size to an Ocean.



Here is a Map of a Sea.

What bodies of water are larger than a Sea?
Oceans.



Here is a Picture of a body of water. It is called a Gulf or Bay.

What is a Gulf or Bay?

A Gulf or Bay is a body of water extending into the land.



Here is a Map of a Bay.

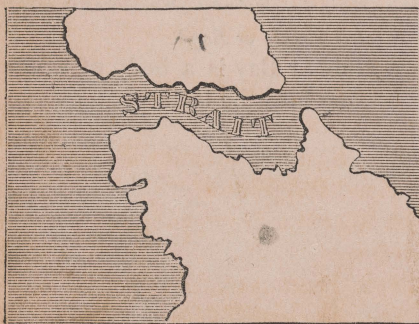
What is a body of water extending into the land called?



Here is a Picture of a narrow body of water between two larger bodies of water. It is called a Strait.

What is a Strait?

A Strait is a narrow body of water.



Here is a Map of a Strait.

What does a Strait connect?

A Strait connects two larger bodies of water.

What does a Strait separate?

It separates land.

What does a Strait connect?

It connects water.

LESSON XI.

Spell the following words:

Lake,	Source,
Riv'er,	Mouth,
Chan'nel,	Shal'low.

What is a Channel?

A Channel is a wide Strait.

What is a Sound?

A shallow Strait or Bay.



Here is a Picture of a body of water. It is called a Lake.

What is a Lake?

A Lake is a body of water almost or quite, inclosed by land.



Here is a Map of two Lakes.



Here is a Picture of a pretty stream of water. It is called a River.

What is a River?

A River is a stream of water flowing through the land.



Here is a Map of two Rivers.

What is a stream of water called?
A River.

What is the Source of a River?
The Source of a River is where it rises.

What is the Mouth of a River?
The Mouth of a River is where it empties.

What are the names of the Natural Divisions of the Water?

Ocean, Sea, Gulf or Bay, Strait, Sound, Channel, Lake and River.

LESSON XII.

Review of the Principal Definitions.

GEOGRAPHY is a description of the Earth.

THE EARTH is the planet or body on which we live.

THE EARTH'S SURFACE is composed of Land and Water.

A MAP is a drawing of the Earth's Surface.

THE PRINCIPAL DIRECTIONS ON A MAP are North, East, South and West.

THE OTHER DIRECTIONS ON A MAP are North-east, South-east, North-west and South-west.

NORTH is toward the top of a Map.

SOUTH is toward the bottom of a Map.

EAST is toward the right hand side of a Map.

WEST is toward the left hand side of a Map.

LESSON XIII.

Review of the Principal Definitions—Continued.

THE EARTH is sometimes called a Sphere.

A SPHERE is a round body.

A HEMISPHERE is one-half a round body.

A MAP OF THE WORLD contains two Hemispheres; one is called the Western and the other the Eastern Hemisphere.

THE MAP OF THE WESTERN HEMISPHERE is a Map of the western half of the Earth.

THE MAP OF THE EASTERN HEMISPHERE is a Map of the eastern half of the Earth.

LESSON XIV.

Review of the Principal Definitions—Continued.

A CONTINENT is a large body of land surrounded by water.

AN ISLAND is land surrounded by water.

A PENINSULA is land not quite surrounded by water.

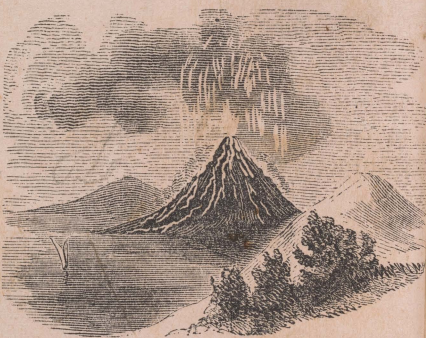
AN ISTHMUS is land which joins a Peninsula to the main land.

A CAPE is a point of land which projects into the water.

A MOUNTAIN is land much higher than the surrounding country.

A MOUNTAIN RANGE OR CHAIN is many mountains joined together.

A VOLCANO is a Mountain which sometimes sends forth fire, smoke, ashes and lava.



A Volcano.

LESSON XV.

Review of the Principal Definitions—Continued

AN OCEAN is a very large body of salt water.

A SEA is a large body of water next in size to an Ocean.

A GULF OR BAY is a body of water extending into the land.

A STRAIT is a narrow body of water.

A CHANNEL is a wide Strait.

A SOUND is a shallow Strait or Bay.

A LAKE is a body of water almost enclosed by land.

A RIVER is a stream of water flowing through the land.

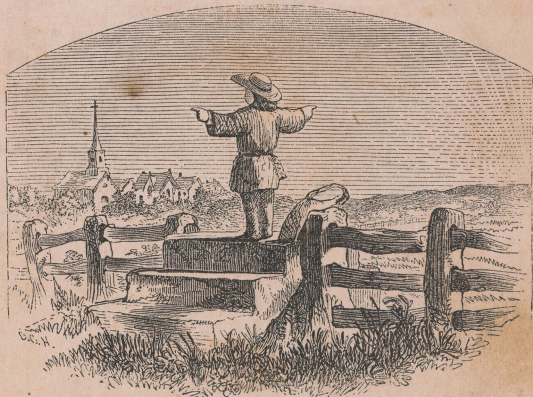
THE SOURCE OF A RIVER is where it rises.

THE MOUTH OF A RIVER is where it empties.

Mention some Political Divisions.

States, Cities, Towns, etc.

The boy in the picture is trying to find out which way is EAST, WEST, NORTH, and SOUTH. His arms are extended straight out from his body, his right hand points toward that part of the heavens where the sun rises—that is EAST; his left hand to that part where the sun sets—that is WEST; before him is NORTH, and behind him is SOUTH. These are called the Cardinal Points of the Compass.



LESSON XVI.

GENERAL QUESTIONS.

What is the name of the planet on which we live?

What is the Earth like in shape?

What does Geography teach?

What is the Earth's surface?

The outside part.

Of what does the surface of the Earth consist?

How much of the Earth's surface is Land?

About one-fourth.

How much of the Earth's surface is Water?

About three-fourths.

How much more Water is there than land?

What are the names of the Natural Divisions of the Land?

Why are these Divisions called Natural?

Because they have been formed by nature.

What are the Divisions called which have been formed by man?

Political Divisions.

How can you tell the Points of the Compass?
By noticing where the Sun rises and sets.

Where does the Sun rise?

In the East.

Where does it set?

In the West.

If you extend your arms, like the boy in the picture, so that your right hand points to the East and your left to the West, where will the North be?—Where will the South be?

What part of a Map do we call North?

What part of a Map do we call South?

What part of a Map do we call East?

What part of a Map do we call West?

WESTERN HEMISPHERE



spell
 reent
 affins
 test I
 ewfor

 What
 H nisp
 North
 Which
 America
 North
 That
 America
 Green
 what
 Greenland
 That Is
 Newfo
 That g
 and South
 The V
 That f
 Pacific Oc
 the S
 Zealand

 Sell the
 Dlen, da
 Ales, an
 Rocky, rok

 What Is
 America?

LESSON XVII.

Spell the following words :

Greenland, green'land.	Society, so-si'e-te.
Baffins, baf'finz.	Sandwich, sand'wich.
West Indies, in'jeez.	New Zealand, nu ze'land.
Newfoundland, nu fundland'.	Friendly, frend'le.

What Grand Divisions are on the Western Hemisphere?

North America and South America.

Which is larger, North America or South America?

North America.

What large Island lies north-east of North America?

Greenland.

In what part of the Western Hemisphere is Greenland?

What Island lies east of North America?

Newfoundland.

What group of Islands is between North and South America?

The West Indies.

What four groups of Islands are there in the Pacific Ocean?

The Sandwich, the Society, New Zealand and the Friendly Islands.

LESSON XVIII.

Spell the following words :

Darien, da're-en.	Hudson, hud'sun.
Andes, an'deez.	Behring, be'ring.
Rocky, rok'e.	Mississippi, mis-sis-sip'po.
Amazon, am'a-zon.	

What Isthmus connects North and South America?

The Isthmus of Darien.

What Cape is south of South America?

Cape Horn.

What Mountains are in South America?

The Andes.

In what part of South America are they?

In the western part.

What Mountains are in North America?

The Rocky Mountains.

In what part of North America are they?

In the western part.

What Oceans are in the Western Hemisphere?

The Arctic, the Atlantic, the Southern and the Pacific Ocean.

Which one is north of North America?

Which one is east of North and South America?

Which one is south of South America?

Which one is west of South and North America?

What Bay is west of Greenland?

Baffin's Bay.

What Bay is in the northern part of North America?

Hudson Bay.

What Strait is between North America and Asia?

Behring Strait.

Between what two Oceans is Behring Strait?

The Arctic and the Pacific Ocean.

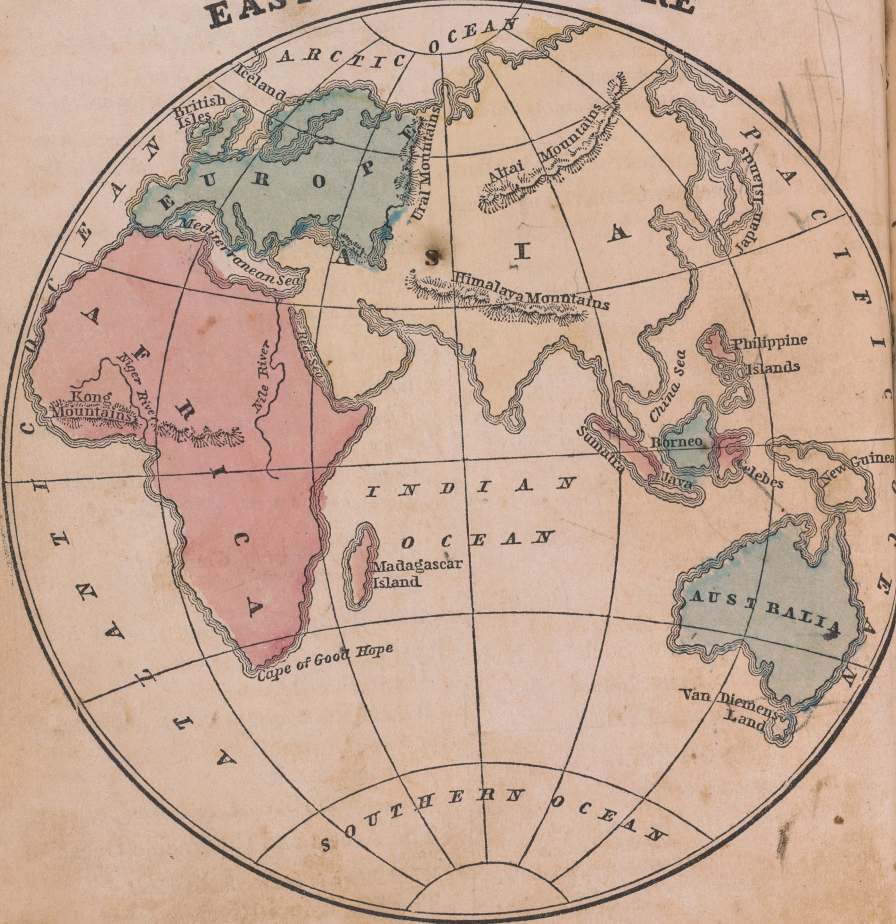
What River is in North America?

The Mississippi River.

What River is in South America?

The Amazon River.

EASTERN HEMISPHERE



Spell the
Japan, Jap
Philippine
Celebes, cel
Borneo, bor

What G
Hemisphere
Europe
Which t
Which o
Australia
Which o
Africa
What the
The Ja
What la
ppine Islan
Borneo
What Is
What Is
What Is
What Is
Java
What I
Sumatra
What I
Mada

Spell the
Ind, a ml
Ural, al of
Himalaya
long, long

What I

LESSON XIX.

Spell the following words:

Japan, jap-an'.	Van Diemen's Land, van de'menz.
Philippine, sil-ip-pene'.	Java, jah'va.
Celebes, sel'e-beze.	Sumatra, su-mah'tra.
Borneo, bor'ne-o.	Madagascar, mad-a-gas'kar.
	New Guinea, nu gin'ne.

What Grand Divisions are on the Eastern Hemisphere?

Europe, Asia, Australia and Africa.

Which two are furthest north?

Which one is furthest south-east?

Australia.

Which one is furthest west?

Africa.

What two groups of Islands are east of Asia?

The Japan and Philippine Islands.

What large Island is south-west of the Philippine Islands?

Borneo.

What Island is east of Borneo?

What Island is east of Celebes?

What Island is south of Australia?

What Island is south of Borneo?

Java.

What Island is north-west of Java?

Sumatra.

What Island is east of Africa?

Madagascar.

LESSON XX.

Spell the following words:

Ural, u'ral.	China, chi'na.
Altai, al-ti'.	Mediterranean, med-i-ter-ra'ne-an.
Himalaya, him-a-li'a.	Nile, nile.
Kong, kong.	Niger, ni'jer.

What Islands are off the west coast of Europe?

The British Isles.

What Cape is in the southern part of Africa?

Cape of Good Hope.

What Mountains are between Europe and Asia?

The Ural Mountains.

What Mountains are in the northern part of Asia?

The Altai Mountains.

What Mountains are in the southern part of Asia?

The Himalaya Mountains.

What Mountains are in the western part of Africa?

The Kong Mountains.

Where are the Ural Mountains?

Where are the Altai Mountains?

Where are the Kong Mountains?

What Oceans are in the Eastern Hemisphere?

The Arctic, the Pacific, the Indian, the Southern and the Atlantic Ocean.

Which one is north of Europe and Asia?

Which one is east of Asia?

Which one is south of Asia?

Which one is south of the Indian Ocean?

Which one is west of Africa and Europe?

What Sea is west of the Philippine Islands?

The China Sea.

What Sea is between Africa and Asia?

The Red Sea.

What Sea is between Africa and Europe?

The Mediterranean Sea.

What two Rivers are in Africa?

The Nile and the Niger.

NORTH AMERICA



Spell
Russia
Ottawa

How is
North
orth b
ast by
nd the
Mention
Russia
United
merica

In what
merica?
The no
In what
The no
In what
The ce
In what
The se

What is
It is a
nd inha
What is
It is t
ade.

Remark-
United S
not & near
be mark

Mention
Cattawa
British
ature

LESSON XXI.

Spell the following words :

Russian, ru'-she-an.	Washington, wash'ing-tun.
Ottawa, ot'-ta-wa.	Mexico, mex'-e-co.

How is North America bounded?

North America is bounded on the north by the Arctic Ocean, on the east by the Atlantic, and on the south and the west by the Pacific Ocean.

Mention the countries of North America.

Russian America, British America, United States, Mexico and Central America.

In what part of North America is Russian America?

The north-western part.

In what part is British America?

The northern part.

In what part are the United States?

The central part.

In what part is Mexico and Central America?

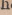
The southern part.

What is a city?

It is a large collection of houses and inhabitants.

What is the Capital of a State or Country?

It is the city where its laws are made.

Remark.—Look upon the map and you will see in the United States the name Washington with this mark  near it. In this manner the Capital Cities will be marked on the map.

Mention the Capital of British America.

Ottawa has been selected as the capital of British America; but, at present, the Legislature meets at Quebec.

Mention the Capital of the United States.

Washington.

What City is the Capital of Mexico?

Mexico.

LESSON XXII.

Spell the following words :

Cuba, ku'-ba.	California, cal-e-for'-ne-a.
Hayti, ha'-te.	Hatteras, hat'-te-ras.
Jamaica, ja-ma'-ka.	Mendocino, men-do-se'-no.
Vancouver, van-koo'-verz.	Alleghany, al-le-ga'-ne.

What Island is north-east of British America?

What Island is east of British America?

What Islands are south-east of the United States?

The West India Islands.

What Island is west of British America?

Vancouver's Island.

What Peninsula belongs to Mexico?

The Peninsula of California.

What Isthmus connects North and South America?

What Cape is in the eastern part of the United States?

Cape Hatteras.

What Cape is on the west coast of the United States?

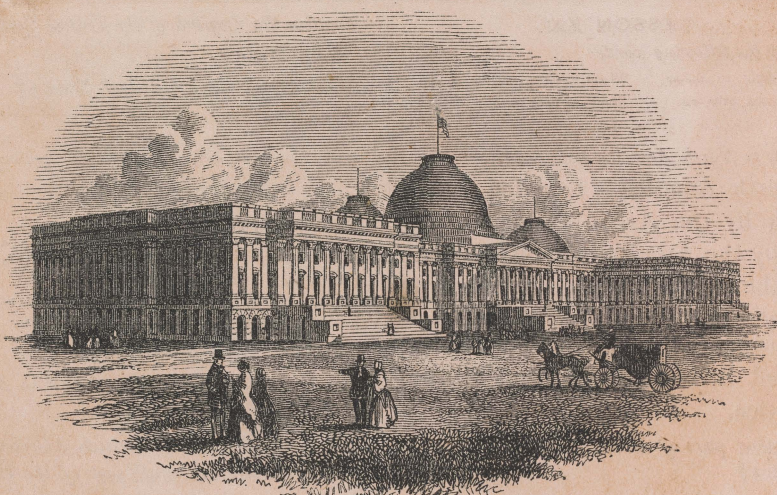
Cape Mendocino.

What Cape is south of Greenland?

Cape Farewell.

What Mountains are in the eastern part of the United States?

What Mountains are in the western part of the United States?



Capitol at Washington.

LESSON XXIII.

Spell the following words :

Caribbean, kar-rib-be'-an.	Superior, sa-pe'-ri-or.
Saint Lawrence, law'-rens.	Huron, hu'-ron.
Winnipeg, win'-ne-peg.	Ontario, on-ta'-re-o.

What Oceans nearly surround North America?

The Arctic, the Atlantic and the Pacific Ocean.

Which one is north of North America?

Which one is east of North America?

Which one is west of North America?

What Sea is east of Central America?

Caribbean Sea.

What Bay is west of Greenland?

Baffin's Bay.

What Bay is in British America?

Hudson Bay.

What Gulf is east of British America?

Gulf of St. Lawrence.

What Gulf is south of the United States?

Gulf of Mexico.

What Gulf east of California Peninsula?

Gulf of California.

What Strait is west of Greenland?

Davis Strait.

What Strait is north of British America?

Hudson Strait.

What two Lakes are in the northern part of British America?

Great Slave and Great Bear Lake.

What Lake in British America, south west of Hudson Bay?

Lake Winnipeg.

What Lakes are between British America and the United States?

Superior, Huron, Erie and Ontario.

LESSON XXIV.

Spell the following words:

Mackenzie's, mak-ken'zez.	Missouri, mis-soo're.
Rio Grande, re'o-gran'da.	Arkansas, ar'kan-saw.

What River is in the northern part of British America?

The Mackenzie's River.

In what Lake does it rise?

Great Slave Lake.

Into what Ocean does it empty?

The Arctic Ocean.

What River rises in Lake Winnipeg?

Where does the Nelson River empty?

Into Hudson Bay.

In what Lake does the St. Lawrence River rise?

In Lake Ontario.

Into what Gulf does it empty?

What two large Rivers empty into the Gulf of Mexico?

The Mississippi and the Rio Grande.

What River empties into the east side of the Mississippi River?

The Ohio River.

What is a River called which empties into another River?

A Branch.

What three Rivers empty into the west side of the Mississippi River?

The Missouri, the Arkansas and the Red River.

LESSON XXV.

Spell the following words:

Colorado, kol-o-rah'do.	Esquimaux, es'ke-mo.
Columbia, ko-lum'be-a.	Indians, in'de-anz.

What River is between the United States and Mexico?

The Rio Grande.

What River empties into the Gulf of California?

The Colorado River.

What River in the United States empties into the Pacific Ocean?

The Columbia River.

What is North America?

North America is one of the Grand Divisions of the Western Continent.

By whom is the northern part of North America inhabited?

It is inhabited chiefly by Indians and Esquimaux.

How do these people live?

They live by hunting and fishing.

What is the Climate, or weather, in the northern part of North America?

It is very cold.

In what part of North America is the Climate very warm throughout the year?

In Mexico and Central America.



An American Indian.



Spell the following
 agellan, mah-jell
 w Granada, mu
 enezuela, ven-e
 niana, ge-ah-na,
 razil, brab-zee'l,
 ruguay, so-roo-gy
 Plata, lah-plah

How is South
 South Am
 orth by the
 ast by the
 uth by the
 n the west

Mention the
 New Gran
 olombia),
 ruguay, L
 olivia, Per

Of these Co
 Which one
 Uruguay.

Which three
 Which one
 Which six

New Gran
 ria, Chili

Which five
 Guiana, L
 id Patago

Which one
 Paragua

What City
 Bogota.

LESSON XXVI.

Spell the following words :

Magellan, mah-jel'lan.	Patagonia, pat-a-go'ne-a.
New Granada, nu-grah-nah da.	Chili, che'le.
Venezuela, ven-ez-wa'la.	Bolivia, bo-liv'e-a.
Guiana, ge-ah'na.	Peru, pe-ru'.
Brazil, brah-zeel'.	Ecuador, ek-wa-dor'.
Uruguay, oo-roo-gwi'.	Paraguay, pah-rah-gwi'.
La Plata, lah-plah'ta.	Bogota, bo-go-tah'.

How is South America bounded?

South America is bounded on the north by the Caribbean Sea, on the east by the Atlantic Ocean, on the south by the Strait of Magellan, and on the west by the Pacific Ocean.

Mention the Countries of South America.

New Granada (now United States of Colombia), Venezuela, Guiana, Brazil, Uruguay, La Plata, Patagonia, Chili, Bolivia, Peru, Ecuador and Paraguay.

Of these Countries, which one is the largest?

Which one is the smallest?

Uruguay.

Which three are furthest north?

Which one is furthest south?

Which six border on the Pacific Ocean?

New Granada, Ecuador, Peru, Bolivia, Chili and Patagonia.

Which five border on the Atlantic Ocean?

Guiana, Brazil, Uruguay, La Plata and Patagonia.

Which one is in the interior?

Paraguay.

What City is the capital of New Granada?

Bogota.

In what part of South America is New Granada?

Of what Country is Bogota the capital?

LESSON XXVII.

Spell the following words :

Caraccas, kah-rah'kas.	Chquisaca, choe'kee-sah'ka.
Rio Janeiro, ri-o-ja-ne'ro.	Lima, le'ma.
Buenos Ayres, bo'nos a'riz.	Quito, ke'to.
Parana, pah-rah-nah'.	Santiago, san 'e-ah'go.

What Country is east of New Granada?

What City is the capital of Venezuela?

Caraccas.

What Country is south of Venezuela and Guiana?

What City is the capital of Brazil?

Rio Janeiro.

What Ocean bounds Brazil on the east?

What Country is east of Chili?

By what other name is La Plata known?

The Argentine Republic.

What City is the Capital of La Plata?

Parana.

What Ocean bounds Chili on the west?

What City is the Capital of Chili?

What Country bounds Chili and La Plata on the north?

What City is the capital of Bolivia?

Chquisaca.

What Country is west of Bolivia?

Peru.

What City is the capital of Peru?

What two Countries are east of Peru?

What Country is north of Peru?

What City is the capital of Ecuador?

Quito.



The manner of catching wild Cattle in South America.

LESSON XXVIII.

Spell the following words :

Terra del Fuego, ter'rah del fwa'go. Tocantins, to-kan-teens'
 Brazilian, brah-zil'e-an. Madeira, mah-da'ra.
 Rio de la Plata, re'o da lah-plah tah, Parana, pah-rah-nah'

What Island is south of Patagonia ?
 Terra del Fuego.

By what Isthmus is North and South America connected ?

What Cape is south of South America ?
 Cape Horn.

What Mountains are in the eastern part of Brazil ?

Brazilian Mountains.

What Mountains are in the western part of South America ?

The Andes Mountains.

What Ocean is east of South America ?

What Ocean is west of South America ?

What Sea is north of South America ?
 Caribbean Sea.

What Strait is between Patagonia and Terra del Fuego ?

Strait of Magellan.

What large River rises in Peru ?

The Amazon River.

What course does the Amazon River flow ?

It flows an easterly course.

Into what Ocean does it empty ?

Into the Atlantic Ocean.

What large River rises in Bolivia ?

Into what River does it empty?

The Amazon River.

What River in Brazil is east of the Madeira River?

The Tocantins River.

What course does it flow?

A northerly course.

What River rises in the Brazilian Mountains?

The Parana River.

What is the lower part of the Parana River called?

The Rio de la Plata.

Between what two Countries does the Parana River flow?

Between Paraguay and La Plata.



Animals of North and South America.

dor, Peru, Bolivia, La Plata, Chili and Patagonia.

LESSON XXIX.

Of the Rivers in South America, which one is the longest?

The Amazon River.

What City in South America is the most populous?

Rio Janeiro.

Of what Country is Rio Janeiro the capital?

What City ranks next to Rio Janeiro?

Buenos Ayres.

Of what is Buenos Ayres the Capital?

Of the State of Buenos Ayres.

On what River is Buenos Ayres?

On the Rio de la Plata.

In what Countries of South America are the Andes Mountains?

In Venezuela, New Granada, Ecua-

What is South America?

South America is one of the Grand Divisions of the Western Continent.

What are the most important productions of South America?

Sugar-cane, coffee, cocoa, oranges, pine-apples, indigo, rose-wood, India-rubber, drugs, wheat and corn.

What is the Climate of the central and the northern part of South America?

It is very warm.

What is the Climate of Patagonia?

It is very cold.

What Country in South America is noted for its rich mines of gold and diamonds?

Brazil.

What Country is noted for its mines of silver and gold?

Peru.



LESSON XXV

Spell the following words:

Caspian, kas'pe-an. Austria, aws'tre-a.
Norway, nor'wa. Greece, grees.

Where is Italy?

Italy is in the southern part of Europe.

What Country is bounded on the north by Denmark?

Germany.

LESSON XXX.

Spell the following words:

Caspian, kas'pe-an.	Austria, aws'tre-a.
Norway, nor'wa.	Greece, grees.
Sweden, swe'den.	Italy, it'a-le.
Russia, ru'she-a.	Portugal, por'tu-gal.
Turkey, tur'ke.	Adriatic, ad-re-at'ik.

How is Europe bounded?

Europe is bounded on the north by the Arctic Ocean, on the east by Asia and the Caspian Sea, on the south by the Black and the Mediterranean Sea, and on the west by the Atlantic Ocean.

What three Countries are in the northern part of Europe?

Norway, Sweden and Russia.

Where is Turkey?

Turkey is in the southern part of Europe.

What Sea is east of Turkey?

What Country is south of Turkey?
Greece.

Where is Austria?

Austria is in the central part of Europe.

What two Countries bound Austria on the east?

Where is Italy?

Italy is in the southern part of Europe.

What Sea is east of Italy?

Where is France?

France is in the western part of Europe.

Where is Spain?

Spain is in the south-western part of Europe.

What Country is west of Spain?

What Ocean is west of Portugal?

LESSON XXXI.

Spell the following words:

Belgium, bel'je-um.	Switzerland, swit'zer-land.
Holland, hol'land.	Scotland, skot'land.
Germany, jer'ma-ne.	England, ing'land.
Prussia, pru'she-a.	Ireland, ire'land.
Baltic, bawl'tik.	Stockholm, stok'holm.
Saint Petersburg, pe'ters-berg.	

Where is Belgium?

North of France.

What Country bounds Belgium on the south?

What Country bounds it on the north?
Holland.

What Sea is north of Holland?

What Country is bounded on the north by Denmark?

Germany.

What two Countries are east of Germany?

What Sea is east of Denmark?

Where is Prussia?

Prussia is in the central part of Europe, north of Austria.

How is Prussia divided?

Into two parts, called East Prussia and West Prussia.

Where is Switzerland?

Switzerland is in the central part of Europe, between France and Austria.

What Countries are on the British Isles?

Scotland, England and Ireland.

Which is furthest north?

What City is the capital of Sweden and Norway?

Stockholm.

In what part of Sweden is it?

What City is the capital of Russia?
St. Petersburg.

In what part of Russia is it?



The Royal Exchange, London.

LESSON XXXII.

Spell the following words :

Vienna, ve-en'na.

Danube, dan'ube.

Paris, par'ris.

Constantinople, kon'stan-te-no'pl.

Madrid, mad'rid.

Seine, sane.

Tagus, ta'gus.

Lisbon, lis'bun.

What City is the capital of Turkey?

Constantinople.

Where is Constantinople?

In what direction from Turkey is Austria?

What City is the capital of Austria?

Vienna.

On what River is Vienna?

What Country is south of Switzerland?
Italy.

Remark.—Italy is divided into several States, and Rome is the capital of one of these States.

In what part of Italy is Rome?

The western part.

What Sea is south of France?

What City is the capital of France?
Paris.

On what River is Paris?

What City is the capital of Spain?
Madrid.

On what River is Madrid?

What City is the capital of Portugal?

Lisbon.

On what River is Lisbon?

Of what Country is Lisbon the capital?

Of what Country is Paris the capital?

LESSON XXXIII.

Spell the following words:

Frankfort, frank'fort.	Dublin, dub'lin.
Copenhagen, ko-pen-ha'gen.	Sicily, sis'e-le.
Berlin, ber'lin.	Corsica, kor'so-ka.
Edinburgh, ed'in-bur-ruh.	Sardinia, sar-de'ne-a.
London, lun'd'n.	Iceland, ice'land.

What City is the capital of Germany?

Frankfort.

Between what two Seas is Denmark?

What City is the capital of Denmark?

Copenhagen.

How is it situated?

On an Island of Denmark.

What Country is east of Prussia?

What City is the capital of Prussia?

Berlin.

In which Prussia is Berlin?

In East Prussia.

Mention the Countries of the British Isles.

What City is the capital of Scotland?

Edinburgh.

What City is the capital of England?

London.

What City is the capital of Ireland?

Dublin.

What three large Islands are there in the Mediterranean Sea?

Sicily, Corsica and Sardinia.

Which two of these are west of Italy?

What Island is west of Norway?

Iceland.

In what Ocean is Iceland?

What Peninsulas are in Europe?

Norway and Sweden, Greece, Italy, Spain and Portugal, and Denmark.

LESSON XXXIV.

Spell the following words:

Matapan, mat-a-pan'.	Pyrenees, pir'en-eez.
Caucasus, kaw'-kah-sus.	Carpathian, kar-ps'-the-an.

What Cape is in the southern part of Greece?

Cape Matapan.

What Mountains are between Europe and Asia?

The Ural and the Caucasus Mountains.

Where are the Pyrenees Mountains?

The Pyrenees Mountains are between France and Spain.

What Mountains are in Central Europe?

The Carpathian Mountains and the Alps.

In what Country of Europe are the Carpathian Mountains?

In what Countries of Europe are the Alps?

The Alps are chiefly in Switzerland and Northern Italy.

What Ocean is north of Europe?

What Ocean is west of Europe?

What Sea is north of Russia?

The White Sea.

What Sea is south-east of Russia?

The Caspian Sea.

What Sea is south of Russia?

The Black Sea.

Where is the Mediterranean Sea?

The Mediterranean Sea is south of Europe.

What Sea is between Italy and Austria?

The Adriatic Sea.

Where is the North Sea?

The North Sea is east of Scotland and England.

Where is the Baltic Sea?

The Baltic Sea is north of Prussia, between Sweden and Russia.

In what direction is it from Russia?

LESSON XXXV.

Spell the following words:

Biscay, bis'ka.	Dover, do'ver.
Finland, fin'land,	Ladoga, la-do'ga.
Bothnia, both'ne-a.	Dwina, dwi'na.
Messina, mes-se'na.	Volga, vol'ga.
Gibraltar, je-brawl'ter.	Rhine, rine.

Where is the Bay of Biscay?

The Bay of Biscay is west of France.

What two Gulfs are west of Russia?

The Gulf of Bothnia and the Gulf of Finland.

Which one is further north?

Where is the Strait of Messina?

The Strait of Messina is between Italy and Sicily.

What Strait is between Spain and Africa?

The Strait of Gibraltar.

Where is the Strait of Dover?

The Strait of Dover is between England and France.

What Channel is between England and France?

Where is Lake Ladoga?

Lake Ladoga is in the western part of Russia.

What River in Russia empties into the White Sea?

The Dwina River.

What Rivers empty into the Caspian Sea?

The Ural and the Volga River.

Through what two Countries does the Danube River flow?

The Danube River flows through Germany, Austria and Turkey.

Into what Sea does it empty?

Through what two Countries does the Tagus River flow?

The Tagus River flows through Spain and Portugal.

Into what Ocean does the Tagus empty?

Through what Country does the Seine flow?

The Seine River flows through France.

Into what Channel does it empty?

Through what Countries does the Rhine flow?

The Rhine River flows through Switzerland, Prussia and Holland.

Between what two Countries does it flow?

Between France and Germany.

Into what Sea does it empty?

LESSON XXXVI.

What is Europe?

Europe is one of the Grand Divisions of the Eastern Continent.

What City in Europe is the largest?

London.

Remark.—London is the largest and richest city in the world.

What City ranks next to London?

Paris.

What is the Climate of the northern part of Europe?

It is, for the most part, cold.

What is the Climate of the southern part of Europe?

It is warm.

What are some of the most important mineral productions of Europe?

Iron, lead, tin, copper, quicksilver and coal.

What are some of the most important vegetable productions of Europe?

Wheat and other grains; also a great variety of delicious fruits.



Animals of Europe.

What Country in Europe is noted for its delightful climate and beautiful scenery?

Italy.

For what is Turkey noted?

For the manufacture of carpets and silk goods.

What Country in Europe is noted for its lofty mountains and beautiful lakes?

Switzerland.

For what productions is France noted?

For wines, brandy and silk.

For what is England noted?

For the manufacture of cotton and woollen goods and hardware.

What is the Island on which Scotland and England are situated, called?

It is called Great Britain.

Of what does it form a part?

It forms a part of the British Isles.



LESSON XXXVII

Spell the following words:

Where is Hindostan?

Hindostan is in the southern

part of Asia

nese Empire?

Pekin

LESSON XXXVII.

Spell the following words:

Siberia, si be're-a. Hindostan, hin'do-stan.
Anam, a'nam, Afghanistan, af-gan-is-tahn'.
Siam, si-am'. Beloochistan, bel-u-shis-tahn'.
Birmah, ber'ma. Arabia, ar-a'be-a.

How is Asia bounded?

Asia is bounded on the north by the Arctic Ocean, on the east by the Pacific Ocean, on the south by the Indian Ocean, and on the west by Africa and Europe.

Where is Siberia?

Siberia is in the northern part of Asia.

What two Countries are south of Siberia?

Where is the Chinese Empire?

In the eastern part of Asia.

What is the south-eastern part of this Empire called?

It is called China, or China Proper.

What two Countries are south of China?

Anam and Siam.

What Country is west of Siam?

Where is Hindostan?

Hindostan is in the southern part of Asia.

What two Countries bound Hindostan on the west?

Afghanistan and Beloochistan.

Which is further north?

Where is Arabia?

Arabia is in the south-western part of Asia.

LESSON XXXVIII. Y

Spell the following words:

Persia, per'she-a. Calcutta, kal-kut'ta.
Pekin, pe'kin. Teheran, teh-her-rah'n'.
Independent Tartary.

Where is Turkey?

Turkey is in the western part of Asia, north of Arabia.

What Country is east of Turkey?

Persia.

What two Countries are east of Persia?

Where is Independent Tartary?

Independent Tartary is in the western part of Asia, west of the Chinese Empire.

What City is the capital of the Chinese Empire?

Pekin.

In what part of the Empire is Pekin?

Pekin is in the northern part of China.

What City is the capital of Hindostan?

Calcutta.

What City is the capital of Turkey?

Constantinople.

Remark.—The City of Constantinople is the capital of Turkey in Europe and Turkey in Asia.

What city is the capital of Persia?

Teheran.

In what part of Persia is Teheran?

What Country in Asia borders on the Arctic Ocean?

What two Countries border on the Pacific Ocean?

Siberia and the Chinese Empire.

What one borders on the Red Sea?

Arabia.

What one borders on the Mediterranean Sea?

Turkey.

Of what Country is Pekin the capital?



Animals of Asia.

LESSON XXXIX.

Spell the following words :

Chinese, chi-neze'.

Suez, su-ez'.

Ceylon, se-lon'.

Comorin, kom'o-rin.

Where are the Japan Islands ?

The Japan Islands are east of the Chinese Empire.

Where are the Philippine Islands ?

The Philippine Islands are south-east of China.

What Islands are south of the Philippine Islands ?

What Island is west of Borneo ?

What Island is south of Hindostan ?

Ceylon.

What Peninsulas are there in Asia ?

Hindostan and Arabia.

What Isthmus connects Africa and Asia ?

The Isthmus of Suez.

What Cape is in the southern part of Hindostan ?

Cape Comorin.

Where are the Ural Mountains ?

The Ural Mountains are between Europe and Asia.

Where are the Altai Mountains ?

They are between Siberia and the Chinese Empire.

Where are the Himalaya Mountains ?

They are between Hindostan and the Chinese Empire.

What Ocean is north of Asia ?

What Ocean is east of Asia ?

What Ocean is south of Asia ?

LESSON XL.

Spell the following words :

Arabian, ar-a-be-an.

Aral, ar'al.

Bengal, ben-gawl'.

Persian, per'zhan.

Obe, o'be.

Lena, le'na.

What Sea is west of the Japan Islands ?
The Sea of Japan.

What Sea is west of the Philippine Islands?
The China Sea.

What Sea is between Hindostan and Arabia?
The Arabian Sea.

Where is the Red Sea?
The Red Sea is west of Arabia.

What Sea is west of Turkey?
The Mediterranean Sea.

What Sea is north of Turkey?
The Black Sea.

What Sea is north of Persia?
The Caspian Sea.

In what direction from Independent Tartary is the Caspian Sea?

What Sea is in Independent Tartary?
The Aral Sea.

What Bay is east of Hindostan?
The Bay of Bengal.

What Gulf is south of Persia?
The Persian Gulf.

What two Rivers are in Siberia?
The Ob and the Lena.

Into what Ocean do they empty?

LESSON XLI.

Spell the following words:

Amoor, am-oor'.	Hoang Ho, ho-ang-ho'.
Cambodia, kam-bo'de-a.	Ganges, gan'jeez.
Indus, in'dus.	Turquoises, tur-keez'es.

What two Rivers are in the Chinese Empire?
The Amoor and the Hoang Ho.

What River flows between Anam and Siam?
The Cambodia River.

What two Rivers are in Hindostan?

The Ganges and the Indus.

What is Asia?

Asia is one of the Grand Divisions of the Eastern Continent.

What is the Climate of Asia?

In the northern part it is cold, but in the southern part it is warm.

For what is Siberia noted?

Siberia is noted for its metals and its fur-bearing animals.

What are the chief productions of China?

Rice and tea.

What are the chief productions of Hindostan?

Precious stones, spices, drugs and valuable woods.

For what production is Arabia noted?

Coffee.

For what productions is Turkey noted?

Olives and figs.

For what is Persia noted?

For the manufacture of beautiful shawls and carpets.

What precious stones do we get from Persia?

Pearls and turquoises.



An Arab.



pell the
Moroco
Algiers,
Tunis,
Tripoli,
Barca,
Egypt,
Nubia,
Abyssin
Soma
Bahara,

Tow is
Africa
the Med
the Red
o the so
Ocean.

Mention
on the Med
Moroc
Herca an
What C
Egypt
What
I tian Oc
Soma
Mozamb
Mention
Africa.
Cape
What C
the Oce
Moroc
ria, U
Cimbe
Totent

LESSON XLII.

Spell the following words :

Morocco, mo-rok'ko.	Zanguebar, zan-gha-bar'.
Algiers, al-jeerz'.	Mozambique, mo-zam-beek'.
Tunis, tu'nia.	Zoolu, zoo'lu.
Tripoli, trip'o-le.	Caffraria, kaf-fra're-a.
Barca, bar'ka.	Hottentots, hot'ten-tots.
Egypt, e'jipt.	Cimbebas, sim-ba'bas.
Nubia, nu'be-a.	Guinea, gin'e.
Abyssinia, ab-is-sin'e-a.	Liberia, li-be're-a.
Somauli, so-maw'le.	Senegambia, sen-e-gam'be-a.
Sahara, sah-hah'ra.	Ethiopia, e-the-o'pe-a.

How is Africa bounded?

Africa is bounded on the north by the Mediterranean Sea, on the east by the Red Sea and the Indian Ocean, and on the south and west by the Atlantic Ocean.

Mention the Countries of Africa bordering on the Mediterranean Sea.

Morocco, Algiers, Tunis, Tripoli, Barca and Egypt.

What Countries border on the Red Sea?
Egypt, Nubia and Abyssinia.

What Countries in Africa border on the Indian Ocean and the Mozambique Channel?

Somauli Territory, Zanguebar, Mozambique, Zoolu and Caffraria.

Mention the most southerly Country of Africa.

Cape Colony.

What Countries in Africa border on the Atlantic Ocean?

Morocco, Sahara, Senegambia, Liberia, Upper Guinea, Lower Guinea, Cimbebas and the Country of the Hottentots.

What Country is south of Tripoli?
Fezzan.

Where is Soudan?

Soudan is in the central part of Africa.

Where is Ethiopia?

Ethiopia is south of Soudan.

LESSON XLIII.

Spell the following words :

Cairo, ki'ro.	Monrovia, mon-ro've-a.
Khartoom, kar toom'.	Madeira, ma-da'ra.
Gondar, gon-dar'.	Canary, ka-na're.
Bab-el-Mandeb.	

What City is the capital of Morocco?
Morocco.

What City is the capital of Algiers?
Algiers.

What City is the capital of Tunis?
Tunis.

What City is the capital of Egypt?
Cairo.

On what River is Cairo?

What City is the capital of Nubia?
Khartoom.

On what River is Khartoom?

What City is the capital of Abyssinia?
Gondar.

What City is the capital of Cape Colony?
Cape Town.

In what part of Cape Colony is Cape Town?

What City is the capital of Liberia?
Monrovia.



Animals of Africa.

What Island is east of Mozambique?

What Islands are west of Morocco?

The Madeira and the Canary Islands.

What Cape is in the southern part of Cape Colony?

Cape of Good Hope.

Where are the Atlas Mountains?

The Atlas Mountains are in the northern part of Africa.

What Mountains are in the southern part of Africa?

The Snow Mountains.

What Mountains are in the western part of Africa?

The Kong Mountains.

LESSON XLIV.

What Ocean is east of Africa?

What Ocean is west of Africa?

What Sea is between Africa and Europe?

What Sea is between Africa and Asia?

What Gulf is west of Africa?

The Gulf of Guinea.

What Strait connects the Mediterranean Sea with the Atlantic Ocean?

The Strait of Gibraltar.

What Strait connects the Red Sea with the Indian Ocean?

The Strait of Bab-el-Mandeb.

What Channel is between Madagascar Island and Africa?

Through what Countries does the Nile flow?

The Nile River flows through Soudan, Nubia and Egypt.

Into what Sea does it empty?

What River in Africa empties into the Gulf of Guinea?

The Niger River.

What is Africa?

Africa is one of the Grand Divisions of the Eastern Continent.

What is the Climate of Africa?

It is hot.

For what is Africa noted?

For its great sandy deserts.

What are some of the important productions of Africa?

Ivory, dates, gold-dust and palm oil.

For what is Egypt noted?

For its pyramids and temples.

THE BRITISH PROVINCES



LESSON XLV.

Spell the following words:

Toronto, to-ron'to.	Frederickton, fred'er-ic-ton.
Kingston, kings'tun.	Nova Scotia, no'va sko'she-a.
Quebec, kwe-bee'.	New Brunswick, nu-brunz'wik.
Halifax, hal'e-fax.	Cape Breton, kape-bre-ton'.
Montreal, mon-tre-aw'.	Prince Edward's, prins ed'wards.

Where are the British Provinces?

The British Provinces are in the south-eastern part of British America.

What City is the Capital of British America?

Ottawa.

What other Cities are in Canada West?

Where and what is Quebec?

Quebec, the capital of Canada East,

is situated on the River St. Lawrence.

Where is Montreal?

On an Island in the St. Lawrence.

It is the Chief City of Canada.

What City is the Capital of New Brunswick?

What City is the Capital of Nova Scotia?

What City is the Capital of Newfoundland?

What Ocean is east of Newfoundland?

Where is Cape Breton Island?

North-east of Nova Scotia.

Where is Prince Edward's Island?

Where is the Gulf of St. Lawrence?

What River is in New Brunswick?

Where is the Ottawa River?

Of what River is the Ottawa a branch?



LESSON XLVI

Spell the following words:

Vermont, ver-mont.

Maryland, ma're-land.

What States are called the Eastern States?

Vermont, New Hampshire,

Massachusetts, Iowa, Illinois, Indiana, California, and Oregon.

LESSON XLVI.

Spell the following words:

Vermont, ver-mont'.	Maryland, ma're-land.
Maine, mane.	Virginia, ver-jin'ya.
New York, nu yor'.	Georgia, jor'je-a.
New Jersey, nu jer'ze.	Florida, flor'e-da.
Delaware, del'a-ware.	Alabama, al-a-bah'ma.
Louisiana, loo-e-ze-ah'na.	Texas, tex'as.
New Hampshire, hamp'shir.	
Massachusetts, mas-sa-chu'sets.	
Rhode Island, rode i'land.	
Connecticut, kon-net' te-cut.	
Pennsylvania, pen-sil'va'ne-na.	
North Carolina, kar-o-li'na.	

How are the United States bounded?

The United States are bounded on the north by British America, on the east by the Atlantic Ocean, on the south by the Gulf of Mexico and Mexico, and west by the Pacific Ocean.

What do the United States comprise?

The United States comprise thirty-four States, ten Territories and one District.

How are the States divided?

Into four sections.

Mention them.

The Eastern, the Middle, the Southern and the Western States.

What States are called the Eastern States?

Vermont, New Hampshire, Maine, Massachusetts, Rhode Island and Connecticut.

What States are called the Middle States?

New York, New Jersey, Delaware and Pennsylvania.

What States are called the Southern States?

Maryland, Virginia, North Carolina, South Carolina, Georgia, Florida, Alabama, Mississippi, Louisiana and Texas.

LESSON XLVII.

Spell the following words:

Minnesota, min-ne-so'ta.	Indiana, in-de-an'a.
Wisconsin, wis-kon'sin.	Nebraska, ne-bras'ka.
Kentucky, ken-tuk'ke.	Dacota, da-ko'ta.
Tennessee, ten-nes-se'.	Kansas, kan'zas.
Iowa, i'o-wa.	Utah, you'taw.
Illinois, il-le-noi'.	Oregon, or'e-gon.

What States are called the Western States?

Minnesota, Wisconsin, Michigan, Ohio, Kentucky, Tennessee, Arkansas, Missouri, Kan-

sas, Iowa, Illinois, Indiana, California, and Oregon. *Nevada.*

Where are the Eastern States?

The Eastern States are in the north-eastern part of the United States.

Where are the Middle States?

The Middle States are west of the Eastern States.

Where are the Southern States?

The Southern States are in the southern part of the United States.

Where are the Western States?

The Western States are west of the Middle States.

Mention the Territories.

Washington, Idaho, Dacota, Nebraska, Colorado, Indian, New Mexico, Arizona, Nevada, and Utah.

Where is the District of Columbia?

It is between Maryland and Virginia.

What City is the capital of the United States? Where is Washington?

Washington is situated on the Potomac River, in the District of Columbia.

LESSON XLVIII.

How is Vermont bounded on the north and east?

Vermont is bounded on the north by Canada East, and on the east by the Connecticut River.

How is Vermont bounded on the south and west?

Vermont is bounded on the south by Massachusetts, and on the west by New York.

In what direction from Vermont is New Hampshire?

How is New Hampshire bounded on the north and east?

New Hampshire is bounded on the north by Canada East, and on the east by Maine and the Atlantic Ocean.

How is New Hampshire bounded on the south and west?

New Hampshire is bounded on the south by Massachusetts, and on the west by the Connecticut River.

What bounds Maine on the north?
Canada East.

What bounds Maine on the east?
New Brunswick.

What bounds Maine on the south?
The Atlantic Ocean.

What bound Maine on the west?
New Hampshire and Canada East.

In what direction from New Brunswick is Maine?

How is Massachusetts bounded on the north and east?

Massachusetts is bounded on the north by Vermont and New Hampshire, and on the east by the Atlantic Ocean.

How is it bounded on the south and west?

Massachusetts is bounded on the south by the Atlantic Ocean, Rhode Island and Connecticut, and on the west by New York.

LESSON XLIX.

Spell the following words:

Montpelier, mont'pel-yer.	Burlington, ber'ling-tun.
Onion, un'yun.	Champlain, sham-plane'.

In what direction is Massachusetts from Vermont and New Hampshire?

What bounds Rhode Island on the north and east?

Rhode Island is bounded on the north and east by Massachusetts.

What bounds it on the south?
The Atlantic Ocean.

What bounds it on the west?
Connecticut.

How is Connecticut bounded on the north and east?

Connecticut is bounded on the north by Massachusetts, and on the east by Rhode Island.

How is it bounded on the south and west?

Connecticut is bounded on the



State House and Yale College in New Haven.

south by Long Island Sound, and on the west by New York.

Which one of the Eastern States is the largest?

What City is the capital of Vermont?
Montpelier.

On what River is Montpelier?

In what part of Vermont is Burlington?

What is Burlington?

Burlington is the Chief Town of Vermont.

On what Lake is Burlington?

What is meant by Chief Town or City?

The largest Town or City in the State.

LESSON L.

Spell the following words:

Concord, kon'kord.	Boston, baws'tun.
Merrimac, mer're-mak.	Lowell, lo'el.
Portsmouth, ports'muth.	Springfield, spring'fild.
Augusta, aw-gus'ta.	Providence, prov'e-dens.
Kennebec, ken'ne-bek.	Newport, nu'port.
Portland, port'land.	Hartford, hart'ford.
Casco, kas'ko.	New Haven, nu ha'ven.

What City is the capital of New Hampshire?
Concord.

On what River is Concord?

In what part of New Hampshire is Portsmouth?

What is Portsmouth?

Portsmouth is the Chief City of New Hampshire.

What City is the capital of Maine?
Augusta.

On what River is Augusta?
Where is Portland?

Portland is in the southern part of Maine, on Casco Bay.

What is Portland?
Portland is the Chief City of Maine.
What City is the capital of Massachusetts?
Boston.

How is Boston situated?
Boston is in the eastern part of Massachusetts, on Boston Bay.

Mention the Chief City of Massachusetts.
Boston.

What other Cities are there in Massachusetts?
Lowell and Springfield.

On what River is Lowell?

On what River is Springfield?

What Cities are the capitals of Rhode Island?
Providence and Newport.

Which is the Chief City?
Providence.

What Cities are the capitals of Connecticut?
Hartford and New Haven.

Which is the Chief City?
New Haven.

On what River is Hartford?

In what part of Connecticut is New Haven?

To what State does Long Island belong?
To New York.

What Mountains are in Vermont?
The Green Mountains.

Where are the White Mountains?
The White Mountains are in New Hampshire.

What Ocean is east of the Eastern States?

Where is Casco Bay?

Casco Bay is south of Maine.

Where is Massachusetts Bay?

Massachusetts Bay is east of Massachusetts.

Where is Long Island Sound?

Long Island Sound is south of Connecticut.

Where is Lake Champlain?

Lake Champlain is between Vermont and New York.

Where is Moosehead Lake?

In the northern part of Maine.

What River empties into Lake Champlain?
The Onion River.

In what Mountains does it rise?

The Green Mountains.

What two Rivers are there in Maine?

Which one rises in Moosehead Lake?

Through what States does the Merrimac flow?
Through New Hampshire and Massachusetts.

What River flows between Vermont and New Hampshire?

The Connecticut River.

What two States does it cross?

Into what Sound does it empty?

LESSON LI.

Spell the following words:

Moosehead, moos'hed. Penobscot, pe-nob'skot.

What Island is south of Connecticut?

MIDDLE STATES



LESSON LII.

How is New York bounded on the north?

New York is bounded on the north by Lake Ontario, River St. Lawrence and Canada East.

How is New York bounded on the east?

New York is bounded on the east by Vermont, Massachusetts and Connecticut.

How is New York bounded on the south and west?

New York is bounded on the south by New Jersey and Pennsylvania, and on the west by Lake Erie, Niagara River and Lake Ontario.

In what direction is New York from the Eastern States?

What bounds New Jersey on the north?
New York.

What bounds New Jersey on the east?
The Atlantic Ocean.

What bounds New Jersey on the south?
Delaware Bay.

What bounds New Jersey on the west?
The Delaware River.

In what direction is New Jersey from Pennsylvania?

How is Delaware bounded on the north?
Delaware is bounded on the north by Pennsylvania.

What bounds Delaware on the east?
Delaware Bay.

How is it bounded on the south and west?
Delaware is bounded on the south and west by Maryland.

LESSON LIII.

Spell the following words:

Albany, awl'ba-ne.	Buffalo, buf'fa-lo.
Troy, troi,	Rochester, roch'es-ter.
Brooklyn, brook'lin.	Genesee, jen-e-se'.

How is Pennsylvania bounded on the north?
Pennsylvania is bounded on the north by Lake Erie and New York.

What bounds Pennsylvania on the east?
The Delaware River.

How is Pennsylvania bounded on the south?
Pennsylvania is bounded on the south by Delaware, Maryland and Virginia.

What bound Pennsylvania on the west?
Virginia and Ohio.

In what direction is Pennsylvania from New York?

What City is the capital of New York?
Albany.

On what River is Albany?

What City is on the Hudson River a few miles above Albany?

Troy.

In what part of New York is New York City?
In the south-eastern part.

What is New York?

New York is the Chief City of the State of New York, and the largest city in the United States.



The State House, or Independence Hall, Philadelphia.

How is New York situated?

New York is situated on an Island between the Hudson and the East River.

What City is on Long Island, near New York?
Brooklyn.

Where is Buffalo?

Buffalo is in the western part of New York.

On what Lake is Buffalo?

Where is Rochester?

Rochester is in the western part of New York.

On what River is Rochester?

LESSON LIV.

Spell the following words:

Harrisburg, har'ris-berg.	Monongahela, mo-non'gn-he'la.
Trenton, tren'tun.	Philadelphia, fil-a-del'fe-a.
Pittsburg, pits'berg.	Newark, nu'ark.

What City is the capital of New Jersey?

Trenton.

On what River is Trenton?

Where is Jersey City?

Jersey City is in the eastern part of New Jersey.

On what River is Jersey City?

The Hudson River.

Mention the Chief City of New Jersey.

Newark.

In what part of New Jersey is Newark?

The eastern part.

What City is the capital of Delaware?

Dover.

Mention the Chief City of Delaware.

Wilmington.

In what part of Delaware is Wilmington situated?

What City is the capital of Pennsylvania?

Harrisburg.

On what River is Harrisburg?

Where is Philadelphia?

Philadelphia is in the south-eastern part of Pennsylvania.

What is Philadelphia?

Philadelphia is the Chief City of Pennsylvania.

On what River is Philadelphia?

In what part of Pennsylvania is Pittsburg?
The western part.

How is Pittsburg situated?

Pittsburg is situated at the junction of the Alleghany and the Monongahela River.

Where is Lake Ontario?

Lake Ontario is between New York and Canada West.

Where is Lake Champlain?

Lake Champlain is between New York and Vermont.

What River runs from Lake Erie to Lake Ontario?

The Niagara River.

What River crosses Western New York?

The Genesee River.

Into what Lake does it empty?

What River rises in Lake Ontario?

The St. Lawrence River.

Where is the Hudson River?

The Hudson River is in the eastern part of New York.

What course does it flow?

A southerly course.

What Branch empties into the Hudson River near Troy?

The Mohawk River.

What River is between New Jersey and Pennsylvania?

In what State does the Delaware River rise?

Into what Bay does it empty?

Through what three States does the Susquehanna River flow?

The Susquehanna River flows through New York, Pennsylvania and Maryland.

What two Rivers in Pennsylvania unite and form the Ohio River?

The Alleghany and the Monongahela River.

LESSON LV.

Spell the following words:

Catskill, kata'kil.

Niagara, ni-ag'a-ra.

Blue Ridge, blu-rije'.

Mohawk, mo'hawk.

Where are the Catskill Mountains?

The Catskill Mountains are in the eastern part of New York.

What Mountains are in Pennsylvania?

The Blue Ridge and the Alleghany Mountains.

In what direction from New Jersey and Delaware is the Atlantic Ocean?

Where is New York Bay?

New York Bay is south of New York City.

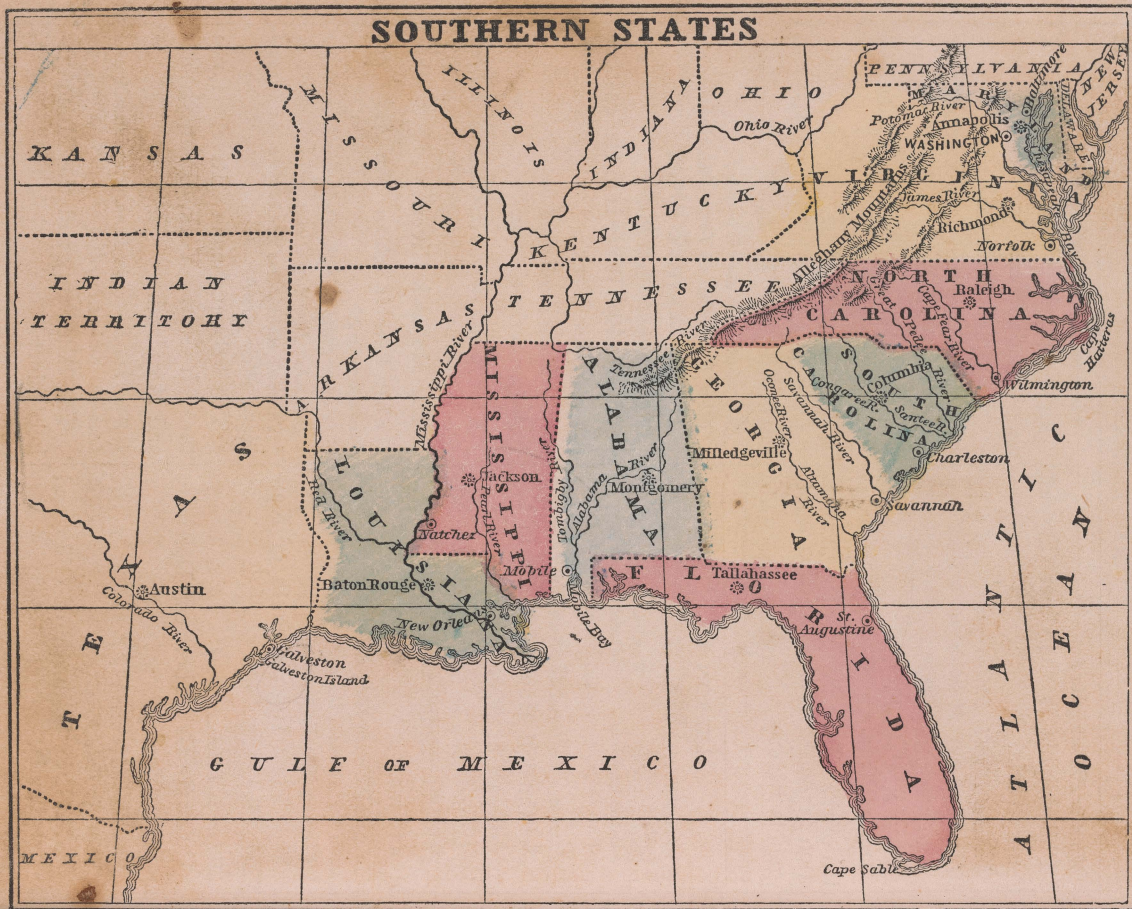
Where is Delaware Bay?

Delaware Bay is between Delaware and New Jersey.

What Sound is north of Long Island?

Where is Lake Erie?

Lake Erie is north of Ohio and Pennsylvania.



Spell the following words:

Potomac, po-to-mac. Savannah, an-vau-na.
Chesapeake, ches-a-peck.

How is Maryland bounded on the north and east?

Maryland is bounded on the

the north by Virginia, and on the east by the Atlantic Ocean.

How is North Carolina bounded on the south and west?

North Carolina is bounded on the south by South Carolina and Georgia, and on the west by

How is Florida bounded on the north and east?

Florida is bounded on the north by Alabama and Georgia, and on the east by the Atlantic Ocean.

LESSON LVI.

Spell the following words:

Potomac, po-to'mac. Savannah, sa-van'na.
Chesapeake, ches'a-peek.

How is Maryland bounded on the north and east?

Maryland is bounded on the north by Pennsylvania, and on the east by Delaware and the Atlantic Ocean.

How is it bounded on the south and west?

It is bounded on the south and west by the Potomac River.

What bound Virginia on the north?

The Ohio River, Pennsylvania, and the Potomac River.

What bound Virginia on the east?

The Potomac River and Chesapeake Bay.

What bound Virginia on the south?

North Carolina and Tennessee.

What bound Virginia on the west?

Kentucky and the Ohio River.

How is North Carolina bounded on the north and east?

North Carolina is bounded on the north by Virginia, and on the east by the Atlantic Ocean.

How is North Carolina bounded on the south and west?

North Carolina is bounded on the south by South Carolina and Georgia, and on the west by Tennessee.

What bounds South Carolina on the north?

North Carolina.

What bounds it on the south-east?

The Atlantic Ocean.

What bounds it on the west?

The Savannah River.

How is Georgia bounded on the north and east?

Georgia is bounded on the north by Tennessee and North Carolina, and on the east by the Savannah River and the Atlantic Ocean.

What bounds it on the south?

Florida.

What bounds it on the west?

Alabama.

LESSON LVII.

How is Florida bounded on the north and east?

Florida is bounded on the north by Alabama and Georgia, and on the east by the Atlantic Ocean.

How is Florida bounded on the south and west?

Florida is bounded on the south by the Gulf of Mexico, and on the west by the Gulf of Mexico and Alabama.

How is Alabama bounded?

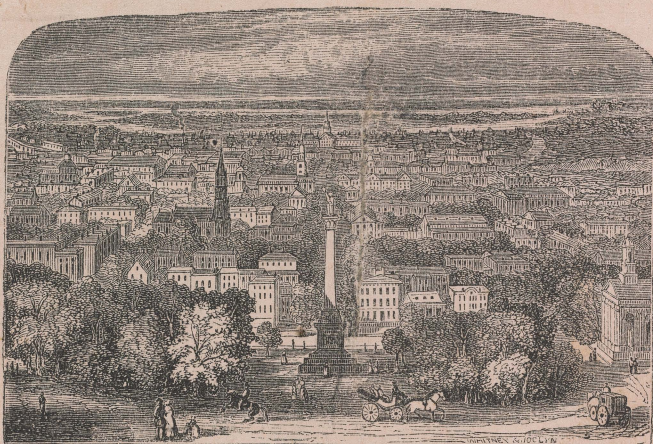
Alabama is bounded on the north by Tennessee, on the east by Georgia, on the south by Florida and the Atlantic Ocean, and on the west by Mississippi.

How is Mississippi bounded on the north and east?

Mississippi is bounded on the north by Tennessee, and on the east by Alabama.

What bound it on the south?

The Gulf of Mexico and Louisiana.



Savannah, Georgia.

What bound it on the west?
The Pearl and the Mississippi River.

What bound Louisiana on the north?
Arkansas and Mississippi.

What bound Louisiana on the east?
The Mississippi River, the Pearl River and the Gulf of Mexico.

What bounds Louisiana on the south?
The Gulf of Mexico.

What bounds Louisiana on the west?
Texas.

What bound Texas on the north and east?

* Texas is bounded on the north by New Mexico and Indian Territory, and on the east by Louisiana.

What bound Texas on the south and west?
Texas is bounded on the south by

the Gulf of Mexico and the Rio Grande, and on the west by the Rio Grande and New Mexico.

LESSON LVIII.

Spell the following words:

Annapolis, an-nap'o-lis.	Wilmington, wil'ming-tun.
Baltimore, baw'l'te-more.	Charleston, charlz'tun.
Richmond, rich'mond.	Congaree, kong-ga-re'.
Norfolk, nor'folk.	Milledgeville, mil'ej-vil.
Raleigh, raw'le.	Oconee, o-ko'ne.

What City is the capital of Maryland?
Annapolis.

Mention the Chief City of Maryland.
Baltimore.

In what direction is Maryland from Virginia?

What City is the capital of Virginia?
Richmond.

* See Map of the United States, page 42.

On what River is Richmond?
In what part of Virginia is Norfolk?
Mention the Chief City of Virginia.

Richmond.

What two States are south of Virginia?
What City is the capital of North Carolina?
 Raleigh.

On what River is Wilmington?
What is Wilmington?

Wilmington is the Chief City of North Carolina.

What City is the capital of South Carolina?
 Columbia.

On what River is Columbia?
Where is Charleston?

Charleston is in the south-eastern part of South Carolina.

What is Charleston?
 Charleston is the Chief City of South Carolina.

What State is west of South Carolina?
What City is the capital of Georgia?
 Milledgeville.

On what River is Milledgeville?

LESSON LIX.

Spell the following words:

Baton Rouge, bah-tong'roozh.	Mobile, mo-beel'.
St. Augustine, aw'gus-teen.	Austin, aws'tin.
Tallahassee, tal-la-has'se.	Natchez, naeh'iz.
Montgomery, mont-gum'er-e.	New Orleans, nu-or'le-ana.
Jackson, jak'sun.	Galveston, gal'ves-tun.

On what River is Savannah?
What is Savannah?

Savannah is the Chief City of Georgia.

What State is south of Georgia?
What City is the Capital of Florida?
 Tallahassee.

In what part of Florida is St. Augustine?
What State is east of Alabama?
What City is the Capital of Alabama?
 Montgomery.

On what River is Montgomery?
Mention the Chief City of Alabama.
 Mobile.

In what part of Alabama is Mobile?
What State is west of Alabama?
What City is the capital of Mississippi?
 Jackson.

On what River is Jackson?
In what part of Mississippi is Natchez?
On what River is Natchez?
What is Natchez?

Natchez is the Chief City of Mississippi.

What State is south of Mississippi?
What City is the capital of Louisiana?
 Baton Rouge.

On what River is Baton Rouge?
What City is south-east of Baton Rouge?
On what River is New Orleans?
What is New Orleans?

New Orleans is the Chief City of Louisiana.

What State is west of Louisiana?
What City is the capital of Texas?
 Austin.

On what River is Austin?
Where and what is Galveston?
 Galveston, the Chief City of Texas, is situated on Galveston Island.



A Cotton Plantation.

LESSON LX.

Spell the following words:

Great Pee-dee, grate pe-de'. Altamaha, al'ta-ma-haw'.
Santee, san-te'. Tombigby, tom-big'be.

Where is Cape Hatteras?

Cape Hatteras projects from the east coast of North Carolina.

Where is Cape Sable?

Cape Sable projects from the south coast of Florida.

What Mountains cross the Southern States?

Where is Chesapeake Bay?

Chesapeake Bay is in Maryland.

Where is the Gulf of Mexico?

The Gulf of Mexico is south of the Southern States.

Where is Mobile Bay?

Mobile Bay is south of Alabama.

What two Rivers flow into Chesapeake Bay?

The Potomac and the James River.

Which one of these Rivers is between Virginia and Maryland?

What two Rivers are in North Carolina?

The Cape Fear and the Great Pee-dee River.

Through what two States does the Great Pee-dee River flow?

What Capital City is on the Congaree River?

Into what River does the Congaree empty?

Into the Santee River.

What River is between Georgia and South Carolina?

Into what Ocean does the Savannah River empty?

LESSON

The Capital City is
Into what River does the
Into the Altamaha
Into what Ocean does the
What Rivers are there
Into what River is Mon
Where is the Pearl Ri
In Mississippi.
What two Rivers are in
Where does the Missis
*The * Mississippi*
Minnesota.

What course does it flo
A southerly cour
Into what Gulf does it
The Gulf of Mexi
What Capital City is
Into what Gulf does
ity?

LESSON

Questions f

How many States are
How many Territori
How many Districts
What Capital City is
Of what is it the Cap
What States are call
Mention the larges
ties. Boston.
What States bound
Mention the larges
ties. C.

* See Map of

LESSON LXI.

*What Capital City is on the Oconee River?
Into what River does the Oconee empty?*

Into the Altamaha River.

Into what Ocean does the Altamaha empty?

What Rivers are there in Alabama?

On what River is Montgomery situated?

Where is the Pearl River?

In Mississippi.

What two Rivers are in Louisiana?

Where does the Mississippi River rise?

The * Mississippi River rises in Minnesota.

What course does it flow?

A southerly course.

Into what Gulf does it empty?

The Gulf of Mexico.

What Capital City is on the Colorado River?

Into what Gulf does the Colorado River empty?

LESSON LXII.

Questions for Review.

How many States are in the United States?

How many Territories?

How many Districts?

What Capital City is situated in this District?

Of what is it the Capital?

What States are called the Eastern States?

Mention the largest City of the Eastern States. Boston.

What States bound New York on the east?

Mention the largest River of the Eastern States. C.

* See Map of the United States.

What Mountains are in Vermont?

What Mountains are in New Hampshire?

Mention the largest City in the United States. N. Y.

Where is New York?

What Cities are capitals of the Middle States? A., T., D., H.

Where is Brooklyn? Where is Buffalo?

Where and what is Philadelphia?

What Mountains are in New York?

Where is Maryland?

What Bay extends into Maryland?

Mention the Chief City of Maryland. B.

Of what State is Richmond the Capital?

LESSON LXIII.

Questions for Review—Continued.

Of what State is Columbia the capital?

What Capital is on the Pearl River?

What Capital is on the Colorado River?

What Gulf is east of Texas?

What State is east of Mississippi?

What State is east of Alabama?

What River and Ocean are east of Georgia?

Mention the Chief City of Georgia. S.

Mention the Chief City of South Carolina. C.

Of what State is New Orleans the Chief City?

Of what State is Mobile the Chief City?

How is New Orleans situated?

What State is north of North Carolina?

What State is south of Georgia?

What States are north of Florida?

What State is north of Alabama?

What Mountains are in Virginia?

Of what State is Raleigh the capital?

Mention the largest State in the United States. Texas.

Mention the smallest. Rhode Island.

[illegible]

Minnesota is bounded by British America, Lake Superior and Lake Huron, and the State of Wisconsin. Its northern boundary is on the 46th parallel of latitude. Its eastern boundary is on the 93rd meridian of longitude. Its southern boundary is on the 43rd parallel of latitude. Its western boundary is on the 96th meridian of longitude. Its area is 22,376 square miles. Its population in 1850 was 15,000. Its capital is St. Paul. Its largest city is St. Paul. Its principal occupations are agriculture, stock raising, and lumbering. Its principal products are wheat, corn, oats, hay, and lumber. Its principal exports are wheat, corn, oats, hay, and lumber. Its principal imports are sugar, coffee, and tea. Its principal cities are St. Paul, Minneapolis, and Duluth. Its principal rivers are the Mississippi, St. Lawrence, and Red. Its principal lakes are Superior, Huron, Michigan, and Erie. Its principal mountains are the Adirondacks, Catskills, and Alleghenies. Its principal islands are Long, Manitowish, and Rock.

LESSON LXIV.

How is Minnesota bounded on the north and east?

Minnesota is bounded on the north by British America, and on the east by Lake Superior and Wisconsin.

What bounds it on the south?

Iowa.

What bounds it on the west?

Dacota Territory.

What bound Wisconsin on the north?

Lake Superior and Michigan.

What bound Wisconsin on the east?

Michigan and Lake Michigan.

How is Wisconsin bounded on the south and west?

Wisconsin is bounded on the south by Illinois, and on the west by the Mississippi River and Minnesota.

What Lake bounds Michigan on the north?
Lake Superior.

What Lakes bound Michigan on the east?
Lake Huron, Lake St. Clair and Lake Erie.

What bound Michigan on the south?
Indiana and Ohio.

What bound Michigan on the west?
Lake Michigan and Wisconsin.

How is Ohio bounded?

Ohio is bounded on the north by Michigan and Lake Erie, on the east by Pennsylvania and the Ohio River,

on the south by the Ohio River, and on the west by Indiana.

LESSON LXV.

How is Kentucky bounded on the north and east?

Kentucky is bounded on the north by the Ohio River, and on the east by Virginia.

How is it bounded on the south and west?

Kentucky is bounded on the south by Tennessee, and on the west by the Mississippi River and the Ohio River.

How is Tennessee bounded?

Tennessee is bounded on the north by Kentucky, on the east by North Carolina, on the south by Georgia, Alabama and Mississippi, and on the west by the Mississippi River.

What bounds Arkansas on the north?
Missouri.

What bounds Arkansas on the east?
The Mississippi River.

What bounds Arkansas on the south?
Louisiana.

What bounds Arkansas on the West?
Indian Territory.

How is Missouri bounded on the north and east?

Missouri is bounded on the north by Iowa, and on the east by the Mississippi River.

How is it bounded on the south and west?

Missouri is bounded on the south by Arkansas, and on the west by Kansas.

How is Kansas bounded?

Kansas* is bounded north by Nebraska, east by Missouri, south by Indian Territory, and west by Colorado.

How is Iowa bounded?

Iowa is bounded north by Minnesota, east by the Mississippi River, south by Missouri, and west by Missouri River.

LESSON LXVI.

Spell the following words :

Wabash, waw'bash.	Milwaukee, mil-waw'ke.
St. Paul, saint pawl'.	Lansing, lan'sing.
Madison, mad'e-sun.	Detroit, de-troit'.

What bounds Illinois on the north?
Wisconsin.

What bound Illinois on the east?
Indiana and the Wabash River.

How is it bounded on the south and west?

Illinois is bounded on the south by the Ohio River, and on the west by the Mississippi River.

How is Indiana bounded?

Indiana is bounded on the north by Lake Michigan and Michigan, on the east by Ohio, on the south by the Ohio River, and on the west by the Wabash River and Illinois.

How is California bounded?*

* See Map of the United States.

California is bounded on the north by Oregon, on the east by Nevada and New Mexico, on the south by California Peninsula, and on the west by the Pacific Ocean.

What City is the capital of Minnesota?
St. Paul.

On what River is St. Paul?

What State is east of Minnesota?

What City is the capital of Wisconsin?
Madison.

Mention the Chief City of Wisconsin.
Milwaukee.

On what Lake is Milwaukee?

What City is the capital of Michigan?
Lansing.

On what River is Lansing?

On what River is Detroit?

The Detroit River.

What is Detroit?

Detroit is the Chief City of Michigan.

LESSON LXVII.

Spell the following words :

Columbus, ko-lum'bus.	Nashville, nash'vil.
Cleveland, kleve'land.	Memphis, mem'fis.
Cincinnati, sin-sin-nat'e.	Jefferson City, jef'fer-sun.
Frankfort, frank'fort.	St. Louis, saint lu'e.
Louisville, lu'e-ville.	Scioto, si-o'to.
Cumberland, kum'ber-land.	

What City is the capital of Ohio?
Columbus.

On what River is Columbus?

Where is Cleveland?

Cleveland is in
Ohio, on Lake
Where is Cincinnati?
Cincinnati is in
Ohio, on the C
What is Cincinnati?
Cincinnati is th
What River is betw
What City is the ca
Frankfort.
On what River is I
What City in Kentu
What is Louisville
Louisville is
Kentucky.
What State is sout
What City is the c
Nashville.
On what River is I



St. Louis.

Cleveland is in the northern part of Ohio, on Lake Erie.

Where is Cincinnati?

Cincinnati is in the southern part of Ohio, on the Ohio River.

What is Cincinnati?

Cincinnati is the Chief City of Ohio.

What River is between Ohio and Kentucky?

What City is the capital of Kentucky?

Frankfort.

On what River is Frankfort?

What City in Kentucky is on the Ohio River?

What is Louisville?

Louisville is the Chief City of Kentucky.

What State is south of Kentucky?

What City is the capital of Tennessee?

Nashville.

On what River is Nashville?

Mention the Chief City of Tennessee.

Nashville.

What City in Tennessee is on the Mississippi River?

Memphis.

What State is south of Missouri?

What City is the capital of Arkansas?

Little Rock.

On what River is Little Rock?

Mention the Chief City of Arkansas.

Little Rock.

What State is south of Iowa?

What City is the capital of Missouri?

Jefferson City.

What and where is St. Louis?

St. Louis, the Chief City of Missouri, is situated in the eastern part of Missouri, on the Mississippi River.

LESSON LXVIII.

Spell the following words:

Des Moines, de-moin', or da-mwain.	Sacramento, ank-ra-men'to. St. Clair, saint klare'.
San Francisco, san'fran-sis'co.	Chicago, she-kaw'go.
Indianapolis, in-de-an-ap'o-lis	Itasca, i-tas'ka.
Dubuque, du-book'.	

What City is the capital of Iowa?
Des Moines.

On what River is Des Moines?
Mention the Chief City of Iowa.
Dubuque.

On what River is Dubuque?
What River separates Iowa from Illinois?
What City is the capital of Illinois?
Springfield.

What is Chicago?
Chicago is the Chief City of Illinois.

On what Lake is Chicago?
What State is east of Illinois?
What City is the capital of Indiana?
Indianapolis.

Mention the Chief City of Indiana.
New Albany.

On what River is New Albany?
*What City is the capital of * California?*
Sacramento City.

Mention the Chief City of California.
San Francisco.

What Mountains are between Tennessee and North Carolina?

The Alleghany Mountains.

What Mountains are west of the Alleghany Mountains?

* See Map of California and the Territories, page 64.

Where is Lake Superior?

Lake Superior is between Michigan and British America.

Where is Lake Huron?

Lake Huron is south-east of Lake Superior, between Michigan and British America.

What Lake is between Lakes Huron and Erie?

Lake St. Clair.

Where is Lake Erie?

Lake Erie is between Ohio and Canada.

Where is Lake Michigan?

Lake Michigan is between Michigan and Wisconsin.

Where is Itasca Lake?

Itasca Lake is in Minnesota.

LESSON LXIX.

What River in Michigan empties into Lake Michigan?

Where is Detroit River?

Detroit River is between Lake St. Clair and Lake Erie.

What River in Wisconsin empties into the Mississippi River?

Where is the Illinois River?

The Illinois River is in Illinois.

Of what River is it a Branch?

The Mississippi River.

What River empties into the Mississippi River, between Illinois and Kentucky?

The Ohio River.



A Prairie on Fire.

What two Rivers empty into the Ohio River on the north?

The Scioto and the Wabash River.

In what State is the Scioto River?

Between what States does the Wabash River flow?

Between Indiana and Illinois.

Mention the southern branches of the Ohio River.

The Kentucky, the Cumberland and the Tennessee River.

Which one of these flows through Kentucky and Tennessee only?

The Cumberland River.

Which one flows through Kentucky only?

The Kentucky River

Which one flows through Tennessee, Alabama and Kentucky?

The Tennessee River.

What River empties into the Mississippi River from Iowa?

The Des Moines River.

Where does this River rise?

In Minnesota.

What River empties into the Mississippi River from Missouri?

The Missouri River.

Where does the *Missouri River rise?

In the Rocky Mountains.

What River crosses Arkansas?

The Arkansas River.

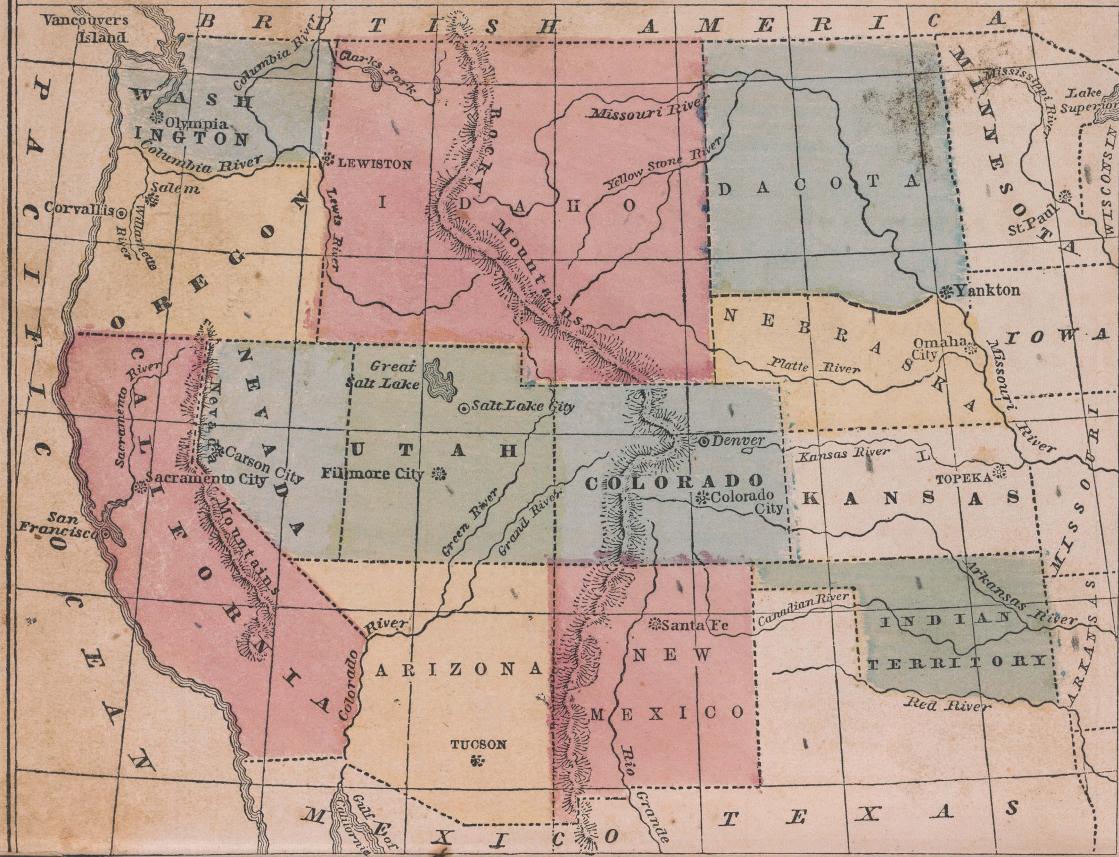
Of what River is the Arkansas a branch?

Where does the *Arkansas River rise?

In the Rocky Mountains.

* See Map of California and the Territories, page 64.

CALIFORNIA & THE TERRITORIES



How is Washington Territory bounded? Washington Territory is bounded on the north by British America, on the east by Idaho, on the south by Oregon, and on the west by the Pacific Ocean.

How is Indian Territory bounded? Indian Territory is bounded on the north by Nebraska and Kansas, on the south by New Mexico, and on the west by Utah.

How is Utah bounded? Utah is bounded on the north by Idaho and Nevada, on the east by Colorado, on the south by New Mexico, and on the west by the Pacific Ocean.

LESSON LXX.

How is Washington Territory bounded?

Washington Territory is bounded on the north by British America, on the east by Idaho, on the south by Oregon, and on the west by the Pacific Ocean.

How is Idaho bounded?

Idaho is bounded on the north by British America, on the east by Dacota, on the south by Colorado and Utah, and on the west by Oregon and Washington Territory.

How is Dacota bounded?

Dacota is bounded on the north by British America, on the east by Minnesota, on the south by Nebraska, and on the west by Idaho.

How is Nebraska bounded?

Nebraska is bounded on the north by Dacota, on the east by the Missouri River, on the south by Kansas, and on the west by Colorado and Idaho.

How is Colorado bounded?

Colorado is bounded on the north by Idaho and Nebraska, on the east by Nebraska and Kansas, on the south by New Mexico, and on the west by Utah.

How is Indian Territory bounded?

Indian Territory is bounded on the north by Kansas, on the east by Arkansas, and on the south and west by Texas.

How is New Mexico bounded?

New Mexico is bounded on the north by Colorado, on the east by Texas, on the south by Texas and Mexico, and on the west by Arizona.

How is Arizona bounded?

Arizona is bounded on the north by Utah, on the east by New Mexico, on the south by Mexico, and on the west by California.

How is Nevada bounded?

Nevada is bounded on the north by Oregon, on the east by Utah, on the south and west by California.

LESSON LXXI.

Spell the following words:

Olympia, o-lim'pe-a.	Canadian, kan-a'de-an.
Omaha, o-ma-ha'.	Willamette, wil-la-met'.
Platte, plat.	Topeka, to-pe'kah.
Santa Fe, san'ta-fa'.	Corvalis, kor-val'lis.

How is Utah bounded?

Utah is bounded on the north by Idaho, on the east by Colorado, on the south by Arizona, and on the west by Nevada.

How is Oregon bounded on the north and east?

Oregon* is bounded on the north by Washington Territory, and on the east by the Lewis River.

How is Oregon bounded on the south and west?

Oregon is bounded on the south by Nevada and California, and on the west by the Pacific Ocean.

* Oregon is now a State.

Mention the capital of Washington Territory.

Olympia.

What City is the capital of Nebraska?

Omaha City.

On what River is Omaha City?

What City is the capital of Idaho?

Lewiston.

On what River is Lewiston?

What City is the capital of New Mexico?

Santa Fé.

What City is the capital of Arizona?

Tucson.

What City is the capital of Utah?

Fillmore City.

LESSON LXXII.

Where is Salt Lake City?

Salt Lake City is in the northern part of Utah.

What City is the capital of Oregon?

Salem.

On what River is Salem?

What other City is on this River?

What Mountains are between Oregon and Nebraska?

What Mountains are between California and Utah?

What Rivers cross Nebraska?

The Missouri, the Yellow Stone and the Platte River.

What Rivers are in Kansas?

The Kansas and the Arkansas River.

Of what River is the Canadian a branch?

What Rivers are in New Mexico?

The Rio Grande, the Colorado, the Green and the Grand River.

What River is in California?

The Sacramento River.

What Rivers are in Oregon?

What Rivers are in Washington Territory?

LESSON LXXIII.

Questions for Review.

What State is west of Ohio?

What State is west of Indiana?

Where is Cincinnati? Where is St. Louis?

What River bounds Illinois on the west?

What large City is in Illinois? C.

What State is north of Illinois?

What Lake is between Michigan and Wisconsin? Where is Milwaukee?

Of what State is Nashville the capital?

Which is further north, Iowa or Missouri?

What large River rises in Minnesota?

Into what Gulf does it empty?

Of what River is the Ohio a branch?

What three States border on the north bank of the Ohio River? Ill., I., O.

What two States border on the south bank of the Ohio River? Where is Detroit?

Of what State is Louisville the Chief City?

On what River is it? Where is Memphis?

Where is California? What bounds California on the north?

What bounds Utah on the north?

Of what River is the Missouri a branch?

What Capital Cities are on the Missouri River? Omaha City and Jefferson City.

What City is on the Cumberland River?

What City is on the Scioto River?

Of what State is Springfield the capital?





LESSON LXXIV.

Spell the following words:

Polynesia, pol-e-ne'she-a. Malaysia, ma-la'she-a.
Australasia, awa-tral-a'she-a. Sydney, sid'ne.

What does Oceania comprise?

Oceania comprises the Continent of Australia, and most of the Islands in the Pacific Ocean.

How is Oceania divided?

Oceania is divided into three parts, called Polynesia, Australasia and Malaysia.

Mention the most important groups of Islands in Polynesia.

Sandwich, Society and Friendly Islands.

What Continent is in Australasia?

What is Australia sometimes called?

An Island.

Mention the Islands of Australasia.

New Guinea, New Zealand and Van Diemen's Land.

Mention the Islands of Malaysia.

Philippine Islands, Celebes, Java, Sumatra and Borneo.

What City is the Capital of a part of Australia?

Sydney.

GENERAL REVIEW.

In what Hemisphere is—

North America?	South America?	Africa?
Europe?	Asia?	Australia?

What is the Capital City of, and in what Grand Division is—

British America?	Germany?	France?
Brazil?	Denmark?	Peru?
United States?	Liberia?	Prussia?
New Granada?	La Plata?	Persia?
Chinese Empire?	Scotland?	Austria?
Venezuela?	Russia?	Egypt?
Turkey?	Spain?	England?
Hindustan?	Ireland?	Chili?

Of what State is each of the following Cities the Capital—

Albany?	Baton Rouge?	Austin?
Raleigh?	Columbia?	Montpelier?
Sacramento?	Jefferson City?	Tallahassee?
Frankfort?	Augusta?	Milledgeville?
Madison?	Columbus?	Dover?
Harrisburg?	Des Moines?	Richmond?
Jackson?	Indianapolis?	Springfield?
St. Paul?	Trenton?	Annapolis?
Hartford?	Hartford and	Providence and
Lansing?	New Haven?	Newport?
Little Rock?	Montgomery?	Nashville?
	Concord?	

In what Country or Countries are the following Mountains—

Carpathian?	Green?	White?
Andes?	Nevada?	Alps?
Pyrenees?	Altai?	Catskill?
Kong?	Alleghany?	Rocky?
Himalaya?	Ural?	Brazilian?

Through what Country or Countries do the following Rivers flow—

Hudson?	Great Pedee?	Ganges?
Amazon?	Ural?	Tagus?
Nile?	Wabash?	Tennessee?
Mississippi?	Missouri?	Penobscot?
Rhine?	Danube?	Savannah?
Kentucky?	Ohio?	Niger?
Seine?	Connecticut?	Indus?
James?	Volga?	Arkansas?

Where are the following Islands—

Borneo?	Long?	Terra del Fuego?
Sicily?	Iceland?	Philippine Isles?
British Isles?	Java?	Madeira Isles?

Japan Islands?	Newfoundland?	Greenland?
Madagascar?	Cuba?	Canary Isles?
Sardinia?	Ceylon?	Corsica?

In what State is each of the following Cities—

Philadelphia?	Memphis?	Louisville?
New Orleans?	Rochester?	New York?
St. Louis?	Newark?	Savannah?
San Francisco?	Milwaukee?	Buffalo?
Cleveland?	Lowell?	Baltimore?
Portland?	Cincinnati?	Springfield?
Pittsburg?	Mobile?	Brooklyn?
Troy?	Detroit?	Charleston?

Where are the following Seas—

Caribbean?	Baltic?	China?
Black?	Red?	Mediterranean?
Japan?	Caspian?	Adriatic?
North?	Arabian?	Aral?

Where are the following Bays—

Hudson?	Massachusetts?	Mobile?
Bengal?	Biscay?	Baffin's?
Chesapeake?	Casco?	Delaware?

Where are the following Lakes—

Superior?	Erie?	Great Slave?
Great Salt?	Moosehead?	Itasca?
Champlain?	Ontario?	Winnipeg?
Michigan?	Great Bear?	Huron?

On what River is each of the following Cities situated—

Paris?	New Orleans?	Albany?
New York?	Vienna?	Hartford?
Lisbon?	Rochester?	Cairo?
Buenos Ayres?	Natchez?	Austin?
Columbus?	Columbia?	Cincinnati?
Wilmington, in North Carolina?	Trenton?	
Augusta, in Maine?	Troy?	
Augusta, in Georgia?	Lowell?	
Springfield, in Massachusetts?	Sacramento?	

Where are the following Gulfs—

Mexico?	Guinea?	Persian?
St. Lawrence?	Bothnia?	Finland?

Where are the following Straits—

Magellan?	Gibraltar?	Bab-el-Mandeb?
Dover?	Messina?	Behring?

Primary School Text-Books.

WEBSTER'S ELEMENTARY SPELLING-BOOK. "The National Standard," of which more than one million copies are sold annually. Price 10 cents.

"At the age of twenty-five, five years after his graduation at Yale College—he in the meantime having studied law—Dr. Webster published that elementary compend called Webster's Spelling-Book, of which more than thirty millions are said to have been printed, and from which probably more than three times as many people have learned to read as there are adults in the United States, and far more than all the adults who speak the English language in the world."—*Dr. Haven.*

WRIGHT'S PRIMARY LESSONS. This neat little volume of 144 pages combines a Primary Spelling-Book and Reader, happily illustrated with numerous cuts intended to attract the attention of the young, and to suggest thought for oral instruction and conversation. Price 12 cents.

MANDEVILLE'S NEW PRIMARY READER. Designed for the Youngest Children in our Schools. 16mo. Prettily and profusely illustrated. Price 12 cts.

In the preparation of this little book, it has been the endeavor of the author to adapt it to the capacity of the youngest school children, by avoiding the use of words or expressions beyond the capacity of childhood. The reading matter is progressive, being at first composed of words of two, and gradually afterwards of those of more syllables.

MANDEVILLE'S NEW SECOND READER. 16mo. 144 pages. With numerous Illustrations. Price 19 cents.

The author has endeavored to give the greatest possible amount and variety of reading matter, adapted, in subject and style, to the class of pupils for whom it is designed, making the whole gradually progressive, and of such fitness of selection that it shall instruct the pupil while it improves his reading. The selections have also been made with a view of their having a decided tendency to promote the cause and practice of virtue and piety.

D. APPLETON & CO.'S EDUCATIONAL WORKS.

PERKINS' PRIMARY ARITHMETIC. 18mo., 160 pages. Price, 20 cents.

This work presupposes no knowledge of Arithmetic. It commences with elementary principles, and lays a sure foundation for what is to follow. It contains mental exercises, but does not prolong them till they become wearisome and unprofitable. It clearly unfolds the principles of Numeration, from a want of proper acquaintance with which even advanced pupils too often suffer. From the four fundamental rules it proceeds to Fractions, and with simple illustrations (oral and written) familiarizes the pupil with their nature and relations. Next come Decimals and their application to Federal Money. This subject can be made the easiest and most interesting in all Arithmetic, and is not left, as in most text-books, till a late period of the course. The whole closes with the Tables, and easy questions to fix them in the mind.

PERKINS' ARITHMETICAL SERIES embraces four text-books, which cover the whole ground, from the first lesson of the beginner in counting to the most abstruse and intricate operations embraced in the science.

FIRST THOUGHTS: Or, BEGINNING TO THINK. A neat little volume, with numerous illustrations, teaching common things in a pleasing manner. 12mo., 109 pages. Price, 50 cents.

THE CHILD'S FIRST HISTORY OF AMERICA. By the author of "Little Dora." Square 18mo., illustrated. Price, 25 cents.

RICORD'S YOUTH'S GRAMMAR; Or, EASY LESSONS IN ETYMOLOGY. A neat 12mo. Price, 25 cents.

CORNELL'S FIRST STEPS IN GEOGRAPHY. Designed for young children in schools and families. Child's 4to., 64 pages, 16 maps and numerous illustrations. Price, — cents.

D. APPLETON & CO'S EDUCATIONAL WORKS.

CORNELL'S PRIMARY GEOGRAPHY. Small 4to., 96 pages, 16 maps, beautifully illustrated. Price, 50 cents.

The Primary Geography contains only those branches of geographical science that admit of being brought fully within the comprehension of the youthful beginner; commencing at the foundation of the science, its object is to make the pupil thoroughly acquainted with the local and the relative position of the grand divisions of the earth, the leading political divisions, and the principal capital cities.

The work is illustrated with upwards of seventy beautiful and appropriate designs, among which will be found representations of an island, a peninsula, an isthmus, a cape, a mountain chain, a sea, a bay, a strait, a lake, a river, &c., and also views of the most important cities in the world.

The map questions are numerous and thorough, and so arranged that the pupil necessarily becomes acquainted with every locality described. At desirable intervals, there is a systematic arrangement of promiscuous questions in review lessons.

A *Pronouncing Vocabulary*, containing the names of all the natural and political divisions used throughout the work, is appended.

OWEN'S PRACTICAL PENMANSHIP. Complete in Three Parts: I. Primary; II. For Gentlemen; III. For Ladies. Each, 12½ cents.

The books are published on the best quality of paper, and in the best style.

QUACKENBOS'S FIRST LESSONS IN COMPOSITION; Combining Composition and Grammar. Price, 50 cents.

COE'S PRIMARY DRAWING CARDS. In Ten Parts, with Instructions. Price, 25 cents each.

COE AND SHELL'S ELEMENTARY DRAWING CARDS. In Three Parts, with Instructions. Price, 19 cents each.

D. APPLETON & CO. publish a complete Descriptive Catalogue of School, Academic, and Collegiate Text-Books, a copy of which will be sent by Mail, free of charge, to any one applying for it.

Webster's Dictionaries ;

FOR SCHOOLS AND EDUCATIONAL INSTITUTIONS OF EVERY GRADE,
AS WELL AS FAMILIES AND GENERAL USE.

REVISED AND IMPROVED EDITIONS, PRINTED FROM ENTIRELY NEW ELECTROTYPE PLATES.

THE SERIES COMPLETED.

WEBSTER'S PRIMARY-SCHOOL DICTIONARY, 804 pages, 16mo. Price 40 cts.

WEBSTER'S COMMON-SCHOOL DICTIONARY, 320 pages, 12mo. Price 60 cts.

WEBSTER'S HIGH-SCHOOL DICTIONARY, 350 pages, 12mo. Price 80 cts.

WEBSTER'S ACADEMIC DICTIONARY, 472 pages, cap 4to. Price \$1 25.

WEBSTER'S COUNTING-HOUSE AND FAMILY DICTIONARY, 522 pages, Imperial 12mo. Price \$1 50.

WEBSTER'S POCKET DICTIONARY, Diamond, 32mo. Embossed Roan. Price 40 cts.

Do.

Do.

Do.

Tucks, gilt edges. Price 75 cts.

The publishers have now the pleasure of presenting the abridgment of Webster's American Dictionary, in a carefully revised, greatly improved, and, as nearly as possible, perfected form. The Series is rendered complete, and made to include a book suited to every purpose for which an abridgment of the complete work can be desired. All of the books in the Series have been most carefully revised, and the new abridgments prepared, by and under the direction of Prof. C. A. GOODRICH and Mr. WM. G. WEBSTER, with assistance from other most competent sources, no pains having been spared to remove any, however slight, grounds for reasonable objection which may have existed to the books in the old form, and to render them as nearly perfect as possible, and yet more worthy the high position they occupy as the standard Dictionaries of the English language,—proved to be such by a sale many times greater than that of all other Dictionaries published in America combined, and acknowledged such by our courts of justice, as well as the people at large.

PUBLISHED BY MASON BROTHERS, NEW YORK.

DE

THE

800

star

possi

book

stiel

trig

Wu

been

may

pos

aries

that

y our

Beate & Edmund May

Book of Andrew & Mary Anne

O-162
OS-1858-2

6
125
C82
1858
C.3

 GET THE BEST. 

CORNELL'S GEOGRAPHIES SURPASS ALL OTHERS,

- 1st. In philosophic arrangement.
- 2d. In the gradual progression of their steps.
- 3d. In presenting one thing at a time.
- 4th. In the adaptation of each part to the age and grade of scholarship for which it is intended.
- 5th. In the admirable mode they prescribe for memorizing the contents of a map.
- 6th. In their full explanations and explicit directions for describing the natural divisions of the earth.
- 7th. In their judicious selection and clear representation of facts.
- 8th. In the appropriate and instructive character of their illustrations.
- 9th. In consistency between maps and text.
- 10th. In the introduction on the maps of such places only as are mentioned in the book.
- 11th. It being at once practical, systematic, and complete, philosophical in its arrangement, and progressive in its development of the subject.

CORNELL'S GEOGRAPHICAL SERIES

CONSISTS OF

- I. **PRIMARY GEOGRAPHY.** Small 4to. 96 pp. 12 Maps. Beautifully illustrated.
Price 50 cents.
- II. **INTERMEDIATE GEOGRAPHY.** Large 4to. Revised edition, with new and additional Maps and numerous Illustrations. Price 67 cents.
GRAMMAR-SCHOOL GEOGRAPHY. Large 4to. with numerous Maps and Illustrations. 108 pp. It includes Physical and Descriptive Geography.
Price 90 cents.
- III. **HIGH-SCHOOL GEOGRAPHY AND ATLAS.** Geography, large 12mo. 405 pp. Richly illustrated. It includes Descriptive, Physical and Mathematical Geography. Price 75 cents. Atlas, very large 4to. Containing a complete set of Maps for study; also, a set of Reference Maps for family use.

A copy of either part of the Series, for examination, will be sent by mail, post paid, to any Teacher or School Officer remitting one-half its price.