

2011

Presumpscot River Watershed Map: Areas of Importance- Municipal (Map)

Presumpscot River Watershed Coalition

Casco Bay Estuary Partnership

Center for Community GIS

Follow this and additional works at: <https://digitalcommons.usm.maine.edu/cbep-graphics-maps-posters>

Recommended Citation

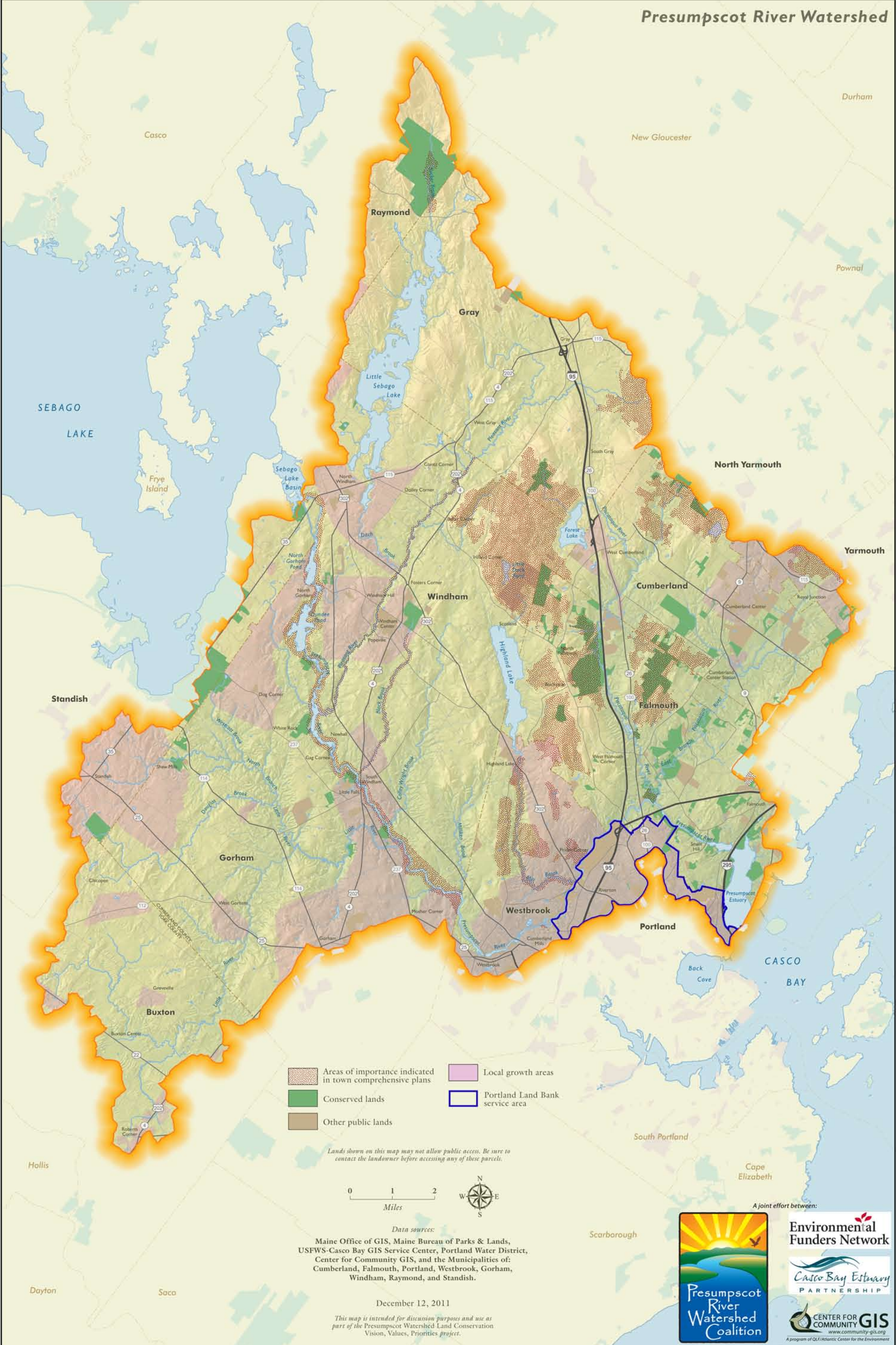
Presumpscot River Watershed Coalition, Casco Bay Estuary Partnership, and Center for Community GIS, "Presumpscot River Watershed Map: Areas of Importance-Municipal (Map)" (2011). *Graphics, Maps, and Posters*. 23.

<https://digitalcommons.usm.maine.edu/cbep-graphics-maps-posters/23>

This Book is brought to you for free and open access by the Casco Bay Estuary Partnership (CBEP) at USM Digital Commons. It has been accepted for inclusion in Graphics, Maps, and Posters by an authorized administrator of USM Digital Commons. For more information, please contact jessica.c.hovey@maine.edu.

Areas of Importance - Municipal

Presumpscot River Watershed



- Areas of importance indicated in town comprehensive plans
- Conserved lands
- Other public lands
- Local growth areas
- Portland Land Bank service area

Lands shown on this map may not allow public access. Be sure to contact the landowner before accessing any of these parcels.



Data sources:

Maine Office of GIS, Maine Bureau of Parks & Lands, USFWS-Casco Bay GIS Service Center, Portland Water District, Center for Community GIS, and the Municipalities of: Cumberland, Falmouth, Portland, Westbrook, Gorham, Windham, Raymond, and Standish.

December 12, 2011

This map is intended for discussion purposes and use as part of the Presumpscot Watershed Land Conservation Vision, Values, Priorities project.

A joint effort between:

