
Early Life and Education

Madeleine Giguère

1939

Lewiston High School Students Madeleine Giguère, Cecilia Butler, and Mary Theresa Crowley

Unknown

Follow this and additional works at: <https://digitalcommons.usm.maine.edu/giguere-early-life-and-education>

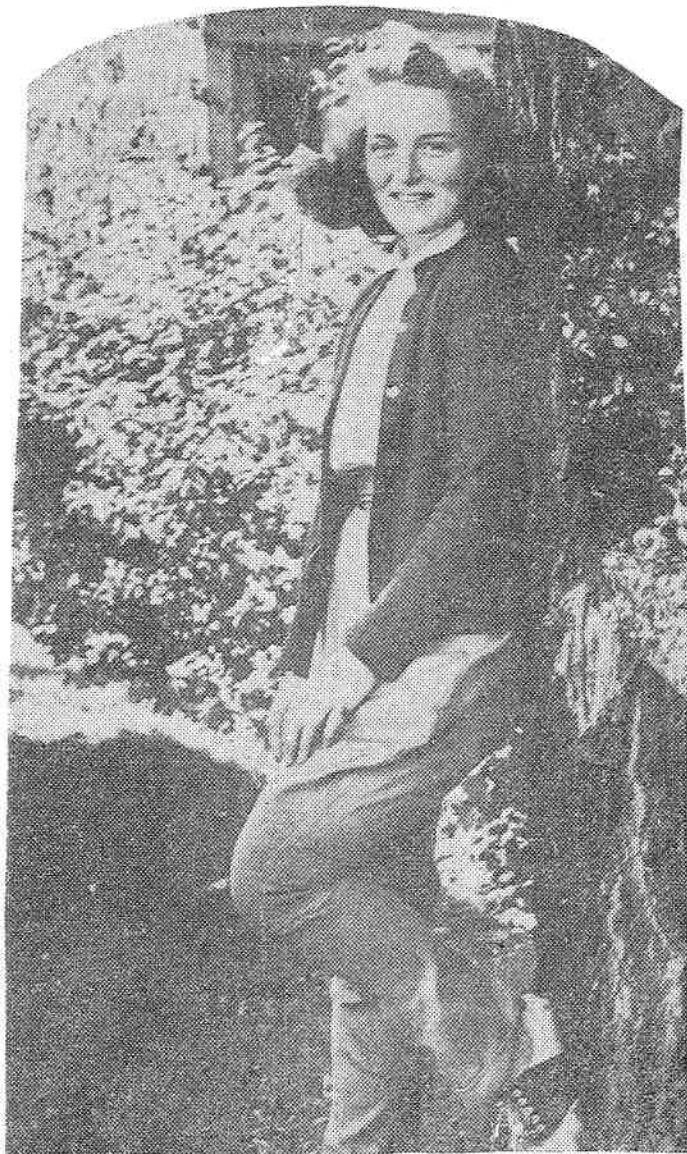
Recommended Citation

Madeleine Giguère Collection, Franco-American Collection, University of Southern Maine Libraries.

This News Article is brought to you for free and open access by the Madeleine Giguère at USM Digital Commons. It has been accepted for inclusion in Early Life and Education by an authorized administrator of USM Digital Commons. For more information, please contact jessica.c.hovey@maine.edu.



Miss Madeleine Giguere, smiling from lower left, is the daughter of Dr. and Mrs. E. N. Giguere, Lewiston, and has been member of the LHS Riding club since its formation. Now a sophomore at that school, she is secretary of the class, has just joined the debating group, and is member of the Vikings, Jr. D. of I. and the Dominant Seventh.



Miss Cecilia Butler, who stands in the center with sunlight on her hair, has the distinction of having won a blue ribbon the first time she competed in a horse show. That was the day following her graduation from Jordan school. She's now a sophomore at LHS, is president of her class, secretary of the Debating club and of the Junior D. of I., and has won distinction as a reader. An enthusiast of equitation, she organized her friends into a riding club while still in grammar school. The club is now known as the LHS Riding club. Miss Butler is the daughter of Mrs. John J. Butler, 5 Bradley street.

Miss Mary Theresa Crowley, who smiles back from the other side of the page, is the daughter of Mr. and Mrs. Daniel Crowley, Webster street. She, too, is an LHS sophomore, an officer of the class, a member of the debating squad last year, and member of the Vikings, Jr. D. of I. and Alpha Lambda Delta sorority.