

---

Raymond Dutil Correspondence

Raymond Dutil (WWII)

---

1944

## Camp Beckinridge Postcard Book

Raymond A. Dutil

Follow this and additional works at: <https://digitalcommons.usm.maine.edu/raymond-dutil-correspondence>

---

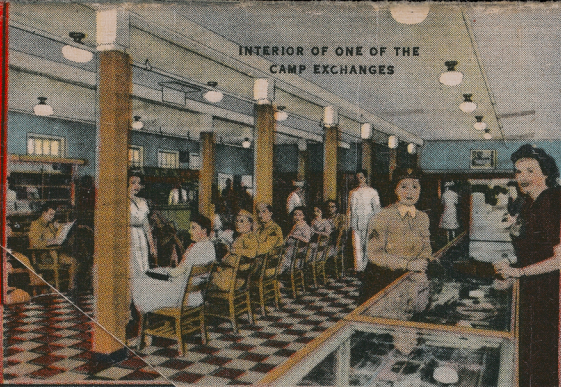
### Recommended Citation

Dutil, Raymond A., "Camp Beckinridge Postcard Book" (1944). *Raymond Dutil Correspondence*. 3.  
<https://digitalcommons.usm.maine.edu/raymond-dutil-correspondence/3>

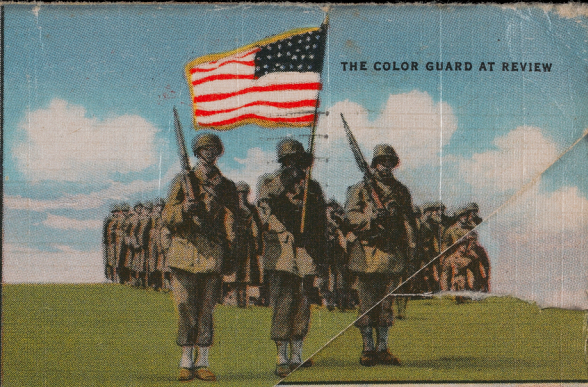
This Book is brought to you for free and open access by the Raymond Dutil (WWII) at USM Digital Commons. It has been accepted for inclusion in Raymond Dutil Correspondence by an authorized administrator of USM Digital Commons. For more information, please contact [jessica.c.hovey@maine.edu](mailto:jessica.c.hovey@maine.edu).

# CAMP

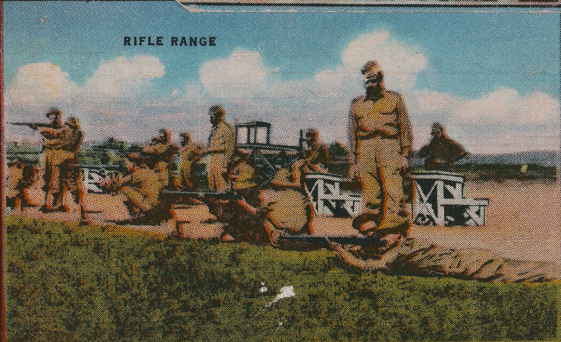
INTERIOR OF ONE OF THE  
CAMP EXCHANGES



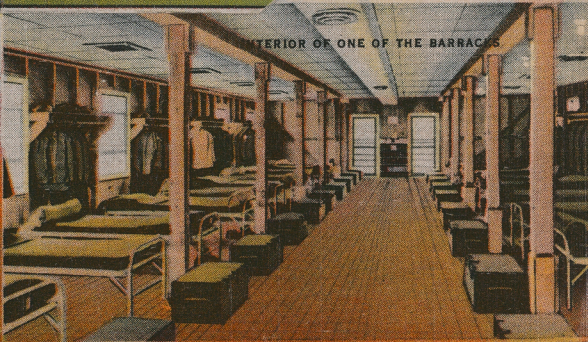
THE COLOR GUARD AT REVIEW



RIFLE RANGE



INTERIOR OF ONE OF THE BARRACKS

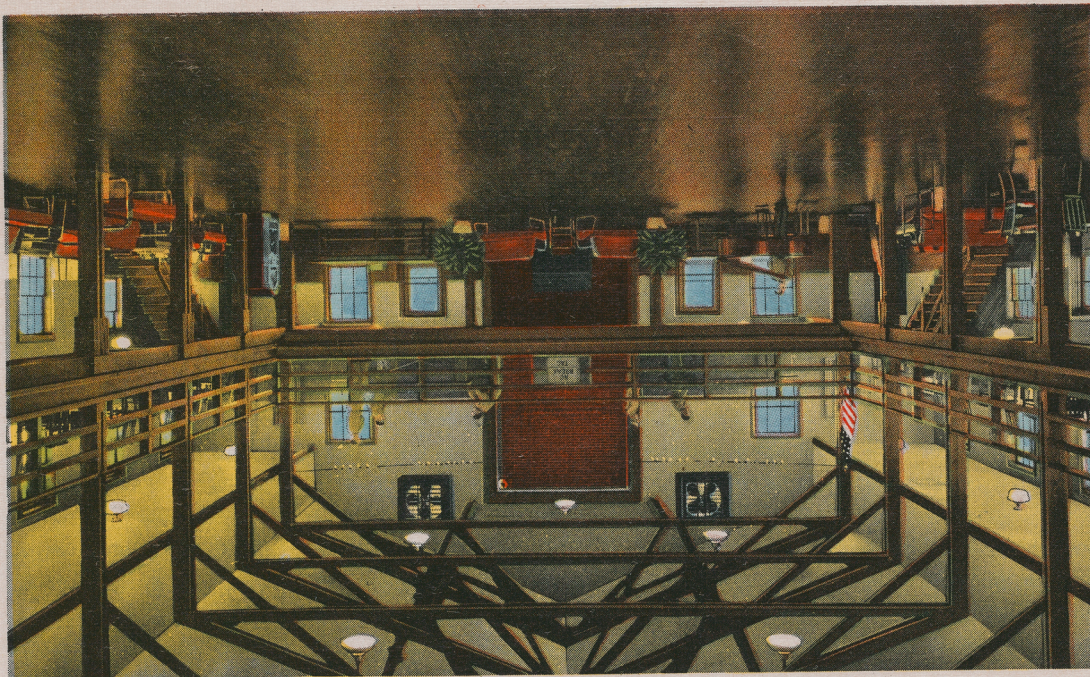


# BRECKINRIDGE



## Greetings from

CAMP BRECKINRIDGE, MORGANFIELD, KY.



Interior of one of the fine Service Clubs

On July 1, 1942, the camp was activated and the first cadets established headquarters in the brick schoolhouse of a small community, Boxville, Ky., taken over by the government as part of the military reservation.

It was in September, five and one-half months after first ground was broken, that the immense task of molding Camp Breckinridge was accomplished. The camp was ready for full occupation.

Setting on the reddish clay soil of the area were cream-colored hospital, barracks, mess halls, storehouses, administration buildings and other vital structures, to be followed by chapels, service clubs, theaters, recreation halls and post exchanges.

The 98th Infantry Division was activated at Camp Breckinridge in a simple ceremony Sept. 15, 1942. Basic training began immediately under command of Maj. Gen. Paul L. Ransom.

Comprising the 98th Division were three Infantry regiments supported by three battalions of light Field Artillery, one battalion of medium Field Artillery and Special Troops. New York, New Jersey, Massachusetts and other Eastern states contributed most of the personnel.

Second Army Special Troops under command of Col. J. N. Peale and the 370th Combat Team of the Negro 92nd Division also trained at Camp Breckinridge. Col. Arthur R. Walk commanded the Combat Team. Later arrivals were Tank Destroyer units of the Fourth Armored Corps and the 83rd Infantry Division.

Four service units are included in the camp permanent personnel—the 1538th, 1562nd, 1563rd and 1570th. The second unit mentioned consists of WACs, pioneer women soldiers who first set food on Camp Breckinridge soil April 8, 1942.

Main roads of the camp are macadamized and extend east-west and northeast-southwest in conforming to the general layout of the camp in its half-horseshoe pattern. Parade grounds are located centrally.

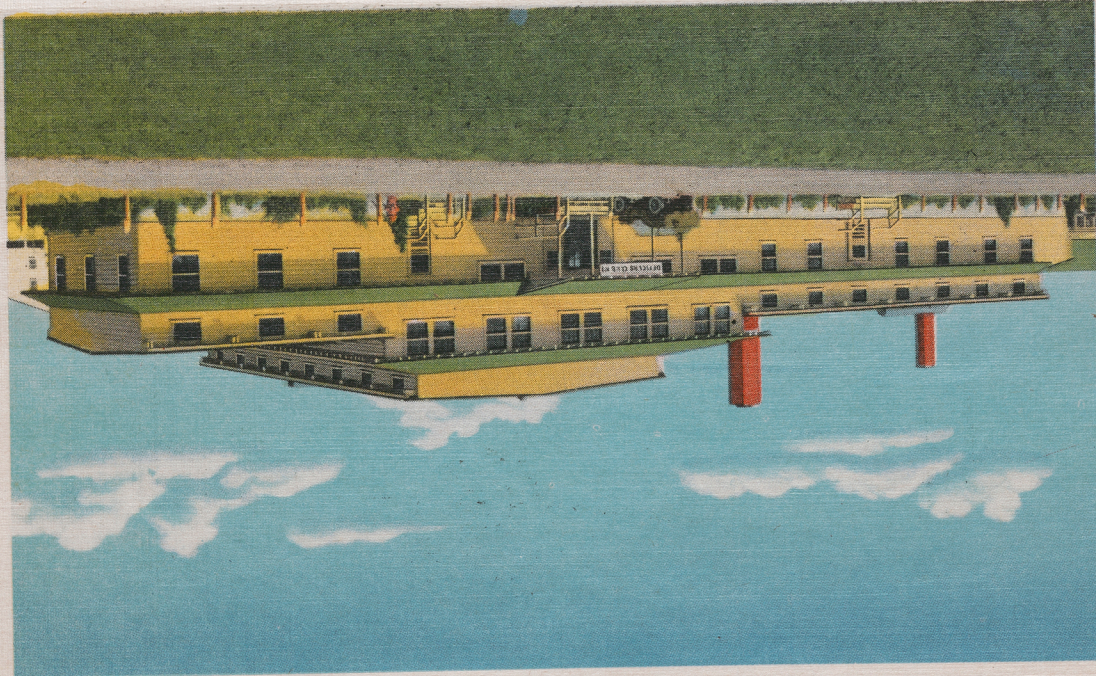
There are 12 chapels where services are conducted for all denominations, five air-conditioned theaters, three spacious service clubs, 13 post exchanges, three officers' clubs, and a giant field house in which it is possible to play four basketball games simultaneously.

Most unusual structure on the reservation is the Post Hospital on the northern outskirts of camp. There are five files of corridors in this one-story, gray shingle hospital made up principally of 56 wards.

Nearest large cities are Henderson, Ky., and Evansville, Ind., 24 and 32 miles northeast respectively. United Service Organizations and the Red Cross of these cities and smaller communities near the post provide extensive entertainment and welfare facilities for the soldiers.

Bus lines provide the chief means of transportation for Camp Breckinridge soldiers journeying to local towns in this picturesque section of the nation.





Officers' Club No. 1

## CAMP BRECKINRIDGE ★ *Kentucky*



SITUATED on gently rolling terrain in western Kentucky within 15 miles of the Ohio River is Camp Breckinridge.

This entirely modern Army post, designed primarily for training Infantrymen, is named in honor of General John Cabell Breckinridge, American soldier and political leader born near Lexington, Ky., of Scotch-Irish ancestry.

Gen. Breckinridge at 35 became the youngest vice president in history of United States. During the trying years preceding the Civil War, this handsome Blue Grass statesman presided over the Senate with conspicuous impartiality although he was a strong pro-slavery and states rights advocate.

Caught in the Civil War turmoil, Gen. Breckinridge backed the Confederacy and became one of the South's ablest commanders. He went to Cuba at conclusion of the war and thence to Europe. He returned to United States in 1868, resuming law practice and helping develop railroads.

Camp commander is Col. John D. Kelly of Charleston, S. C., graduate of the Class of 1912 at West Point.

Plans for Camp Breckinridge were outlined at Washington, D. C., in August of 1941. First actual construction work was started April 1 of the next year, with a 24-hour daily work schedule maintained throughout the early months.

On July 1, 1942, the camp was activated and the first cadremen established headquarters in the brick schoolhouse of a small community, Boxville, Ky., taken over by the government as part of the military reservation.

It was in September, five and one-half month after first ground was broken, that the immense task of molding Camp Breckinridge was accomplished. The camp was ready for full occupation.

Setting on the reddish clay soil of the area were cream-colored hospital, barracks, mess halls, storehouses, administration buildings and other vital structures, to be followed by chapels, service clubs, theaters, recreation halls and post exchanges.

The 98th Infantry Division was activated at Camp Breckinridge in a simple ceremony Sept. 15, 1942. Basic training began immediately under command of Maj. Gen. Paul L. Ransom.

Comprising the 98th Division were three Infantry regiments supported by three battalions of light Field Artillery, one battalion of medium Field Artillery and Special Troops. New York, New Jersey, Massachusetts and other Eastern states contributed most of the personnel.

Second Army Special Troops under command of Col. J. N. Peale and the 370th Combat Team of the Negro 92nd Division also trained at Camp Breckinridge. Col. Arthur R. Walk commanded the Combat Team. Later arrivals were Tank Destroyer units of the Fourth Armored Corps and the 83rd Infantry Division.

Four service units are included in the camp permanent personnel—the 1538th, 1562nd, 1563rd and 1570th. The second unit mentioned consists of WACs, pioneer women soldiers who first set food on Camp Breckinridge soil April 8, 1942.

Main roads of the camp are macadamized and extend east-west and northeast-southwest in conforming to the general layout of the camp in its half-horseshoe pattern. Parade grounds are located centrally.

There are 12 chapels where services are conducted for all denominations, five air-conditioned theaters, three spacious service clubs, 13 post exchanges, three officers' clubs, and a giant field house in which it is possible to play four basketball games simultaneously.

Most unusual structure on the reservation is the Post Hospital on the northern outskirts of camp. There are five files of corridors in this one-story, gray shingle hospital made up principally of 56 wards.

Nearest large cities are Henderson, Ky., and Evansville, Ind., 24 and 32 miles northeast respectively. United Service Organizations and the Red Cross of these cities and smaller communities near the post provide extensive entertainment and welfare facilities for the soldiers.

Bus lines provide the chief means of transportation for Camp Breckinridge soldiers journeying to local towns in this picturesque section of the nation.



Sign at Main Gate

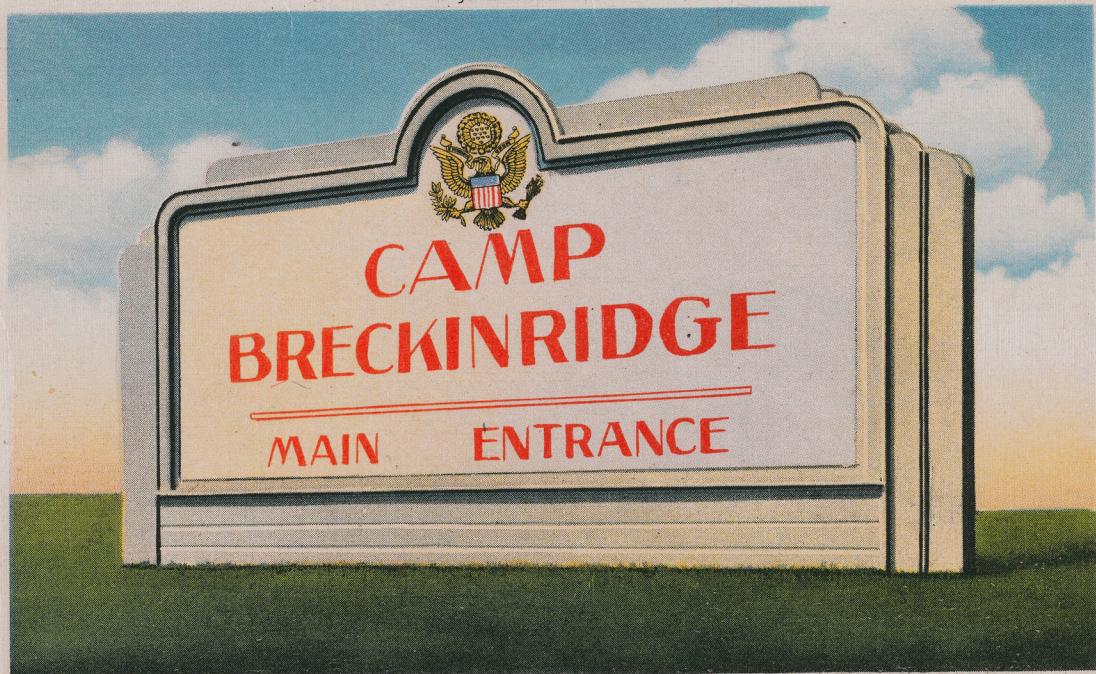
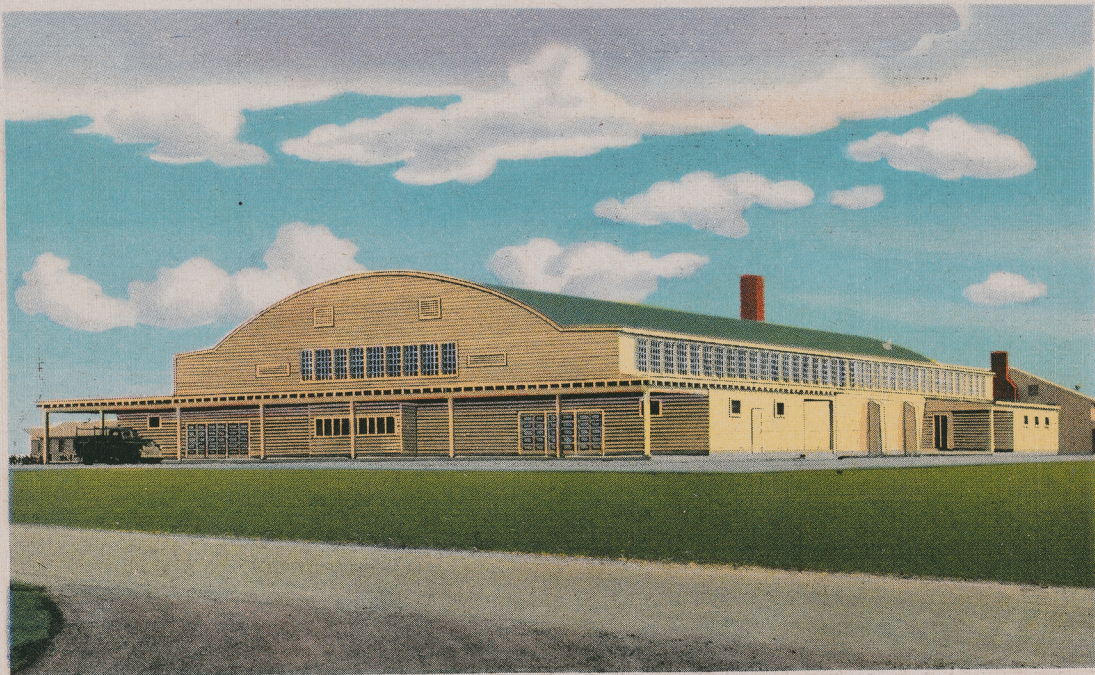


PHOTO BY U. S. ARMY SIGNAL CORPS

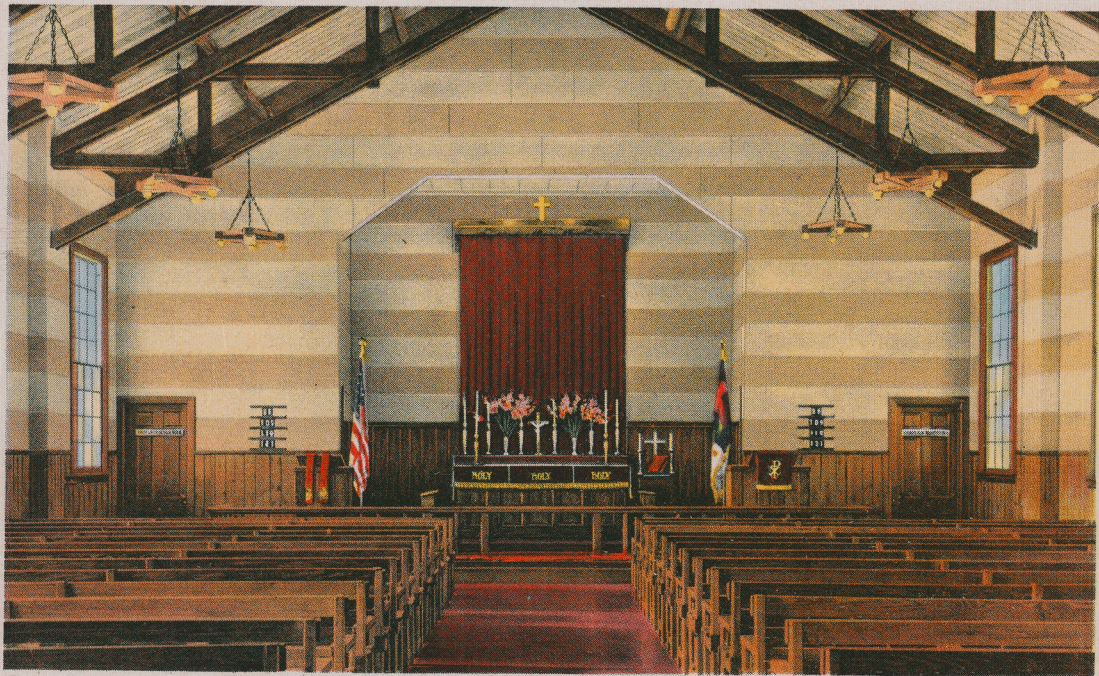


Field House



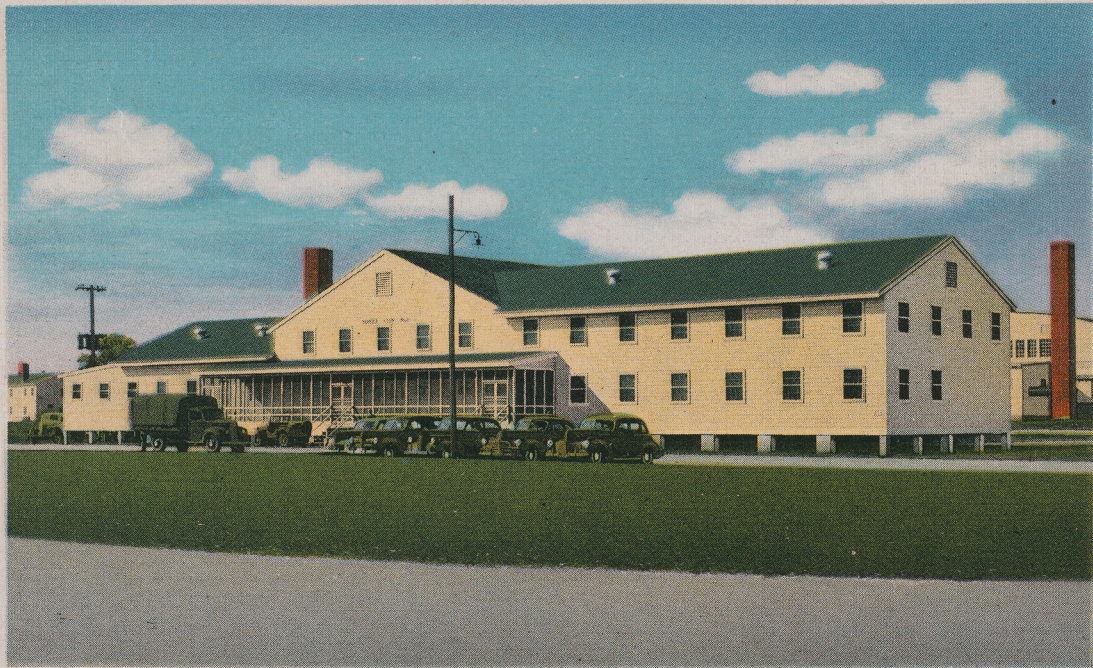


*Interior of one of the Chapels*





*Service Club*





*Rifle Range*

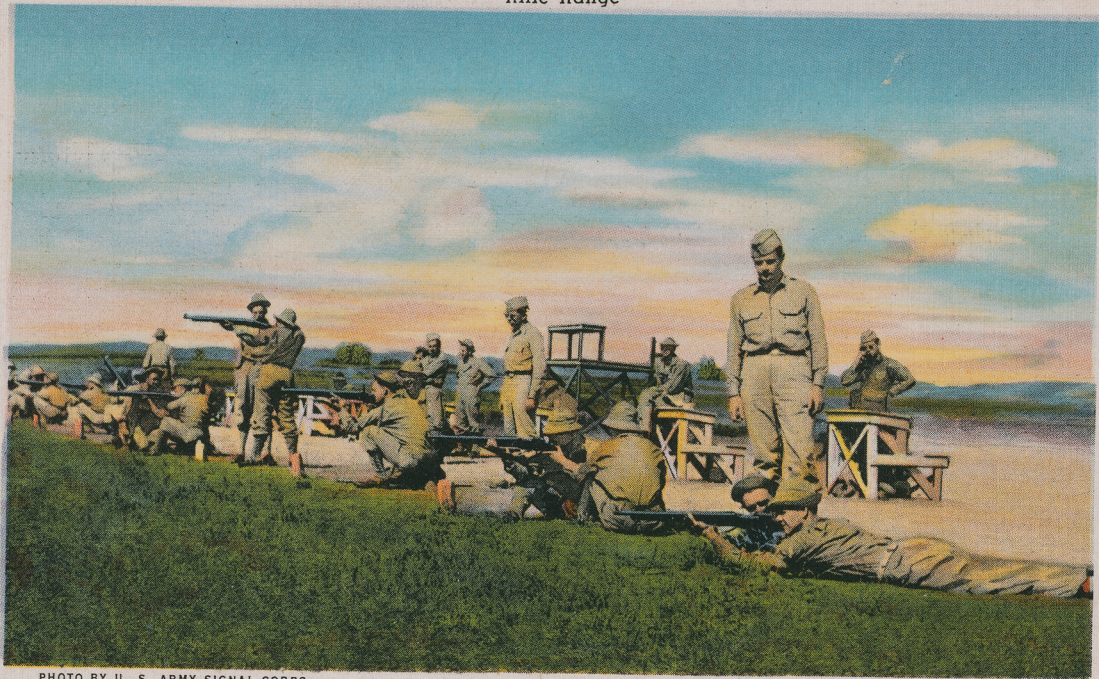


PHOTO BY U. S. ARMY SIGNAL CORPS



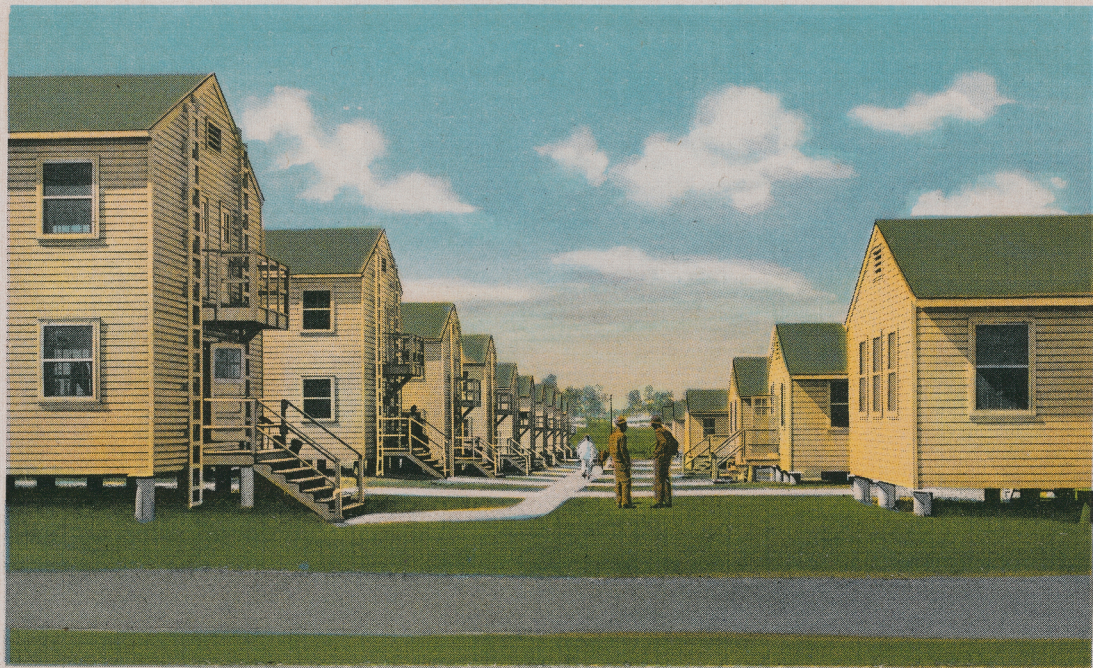
*Interior of one of the Camp Exchanges, "The Soldiers' Store"*



PHOTO BY U. S. ARMY SIGNAL CORPS



*Enlisted Men's Barracks and Mess Halls*





Garden Scene

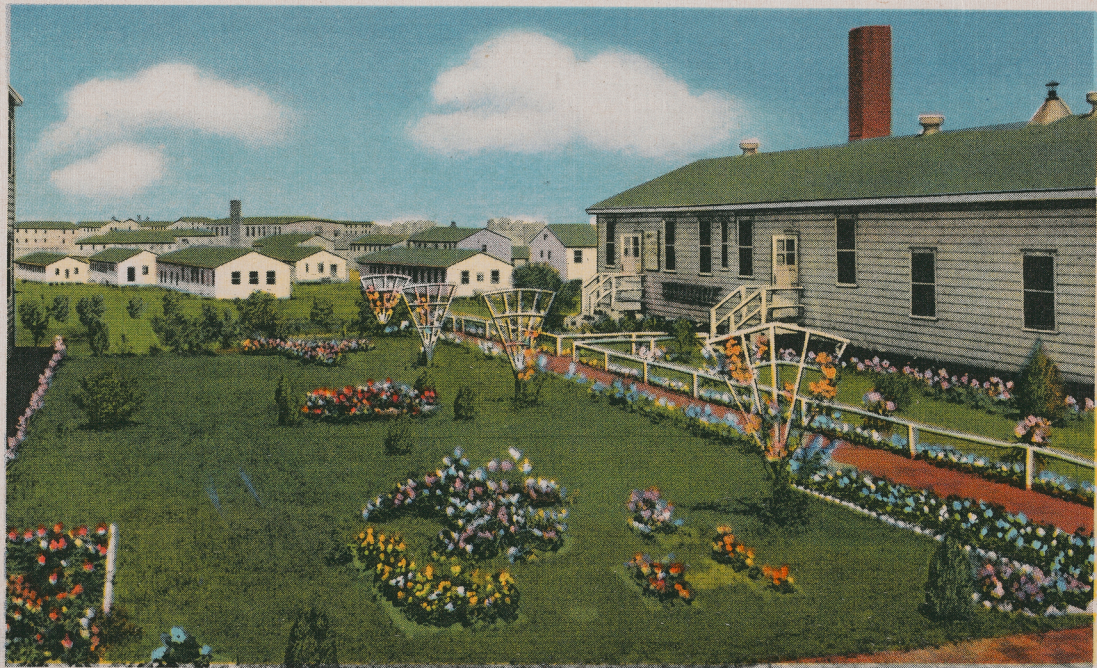


PHOTO BY U. S. ARMY SIGNAL CORPS



*Camp Headquarters*

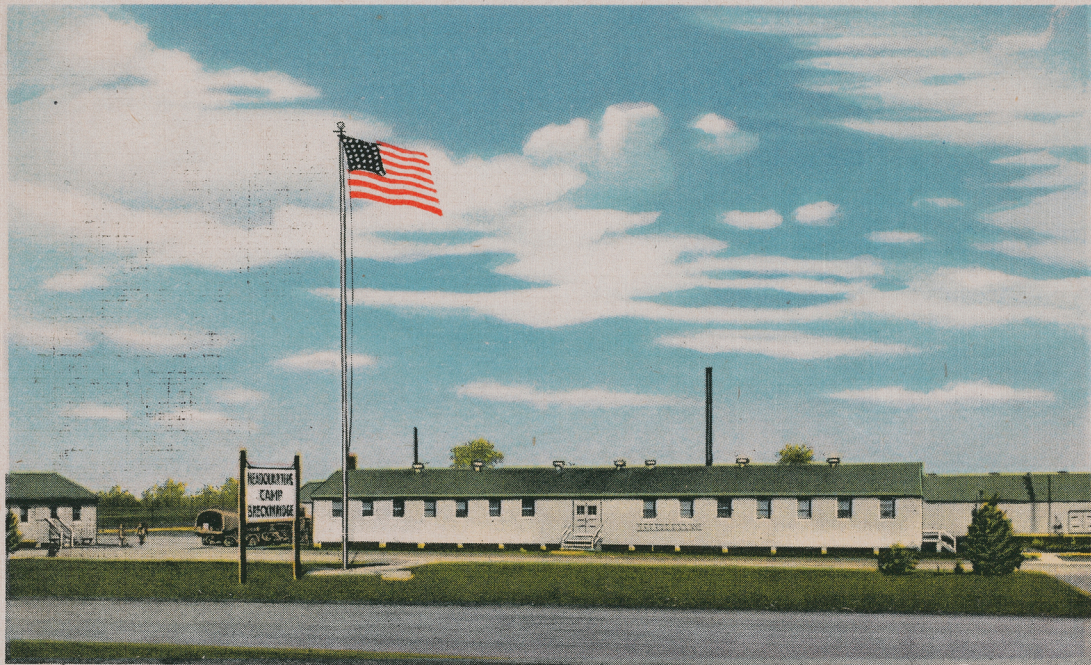


PHOTO BY U. S. ARMY SIGNAL CORPS

Officers' Club No. 1

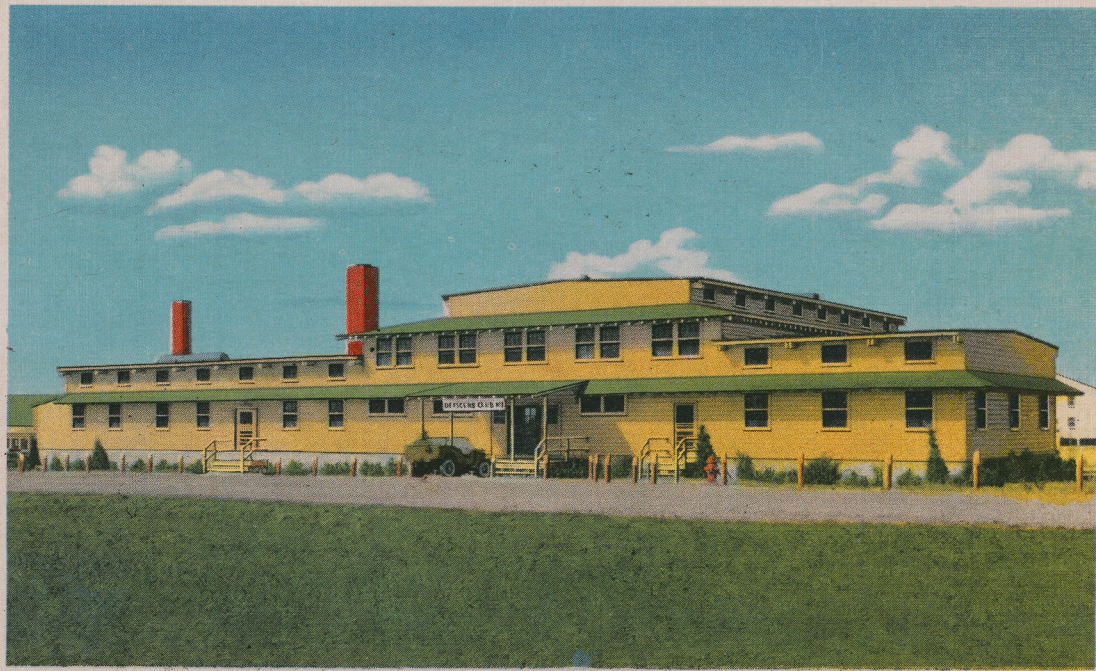


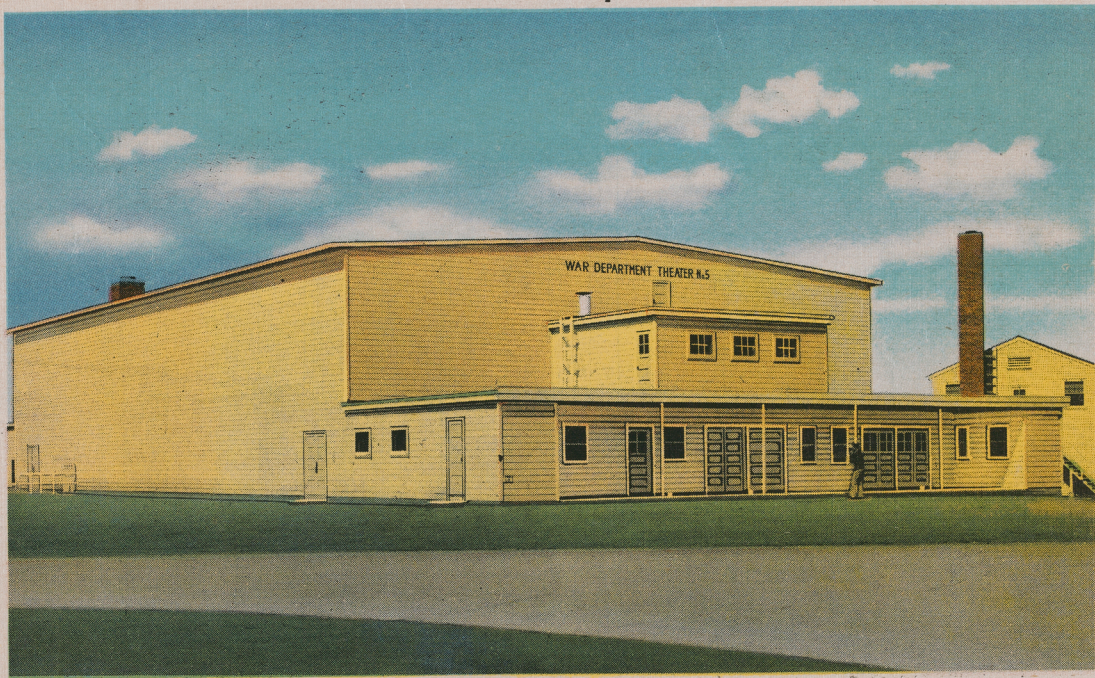
PHOTO BY U. S. ARMY SIGNAL CORPS



*Interior of one of the fine Service Clubs*



*War Department Theatre*





*Interior of one of the Barracks*

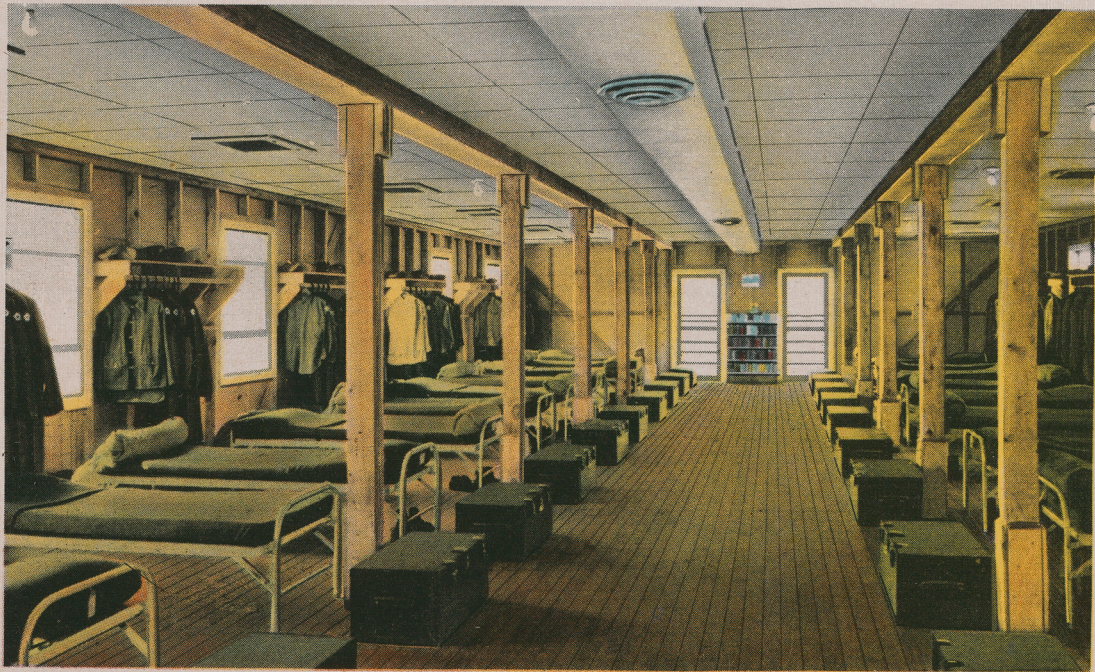
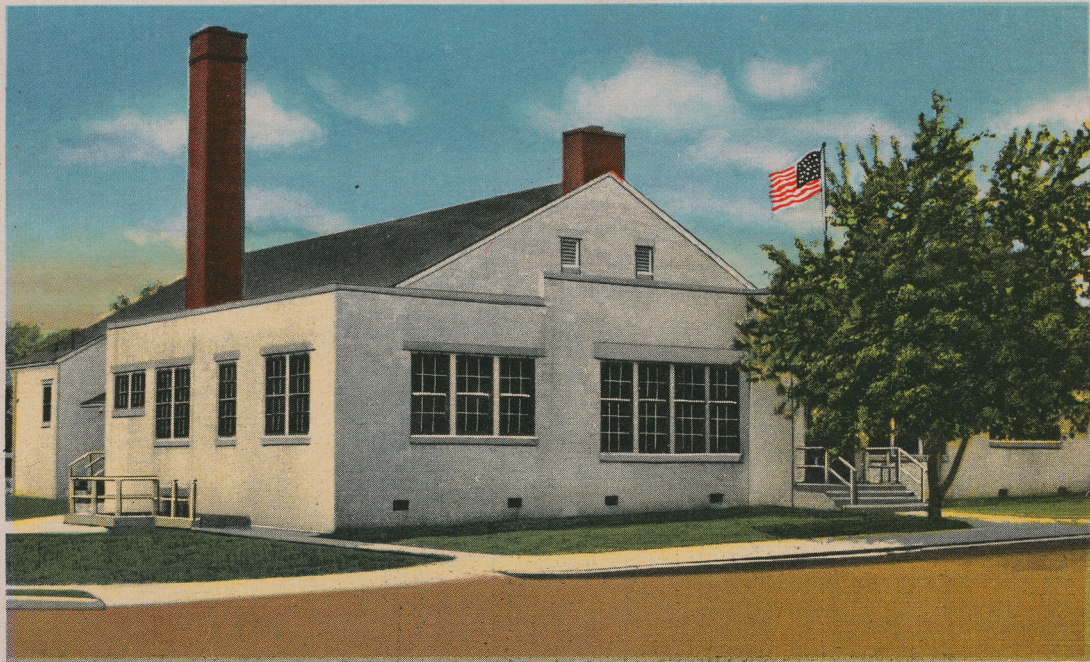


PHOTO BY U. S. ARMY SIGNAL CORPS



*USO Club, Morganfield, Kentucky, 1½ Miles from Camp Breckinridge*





Stockade



PHOTO BY U. S. ARMY SIGNAL CORPS



*Post Hospital*

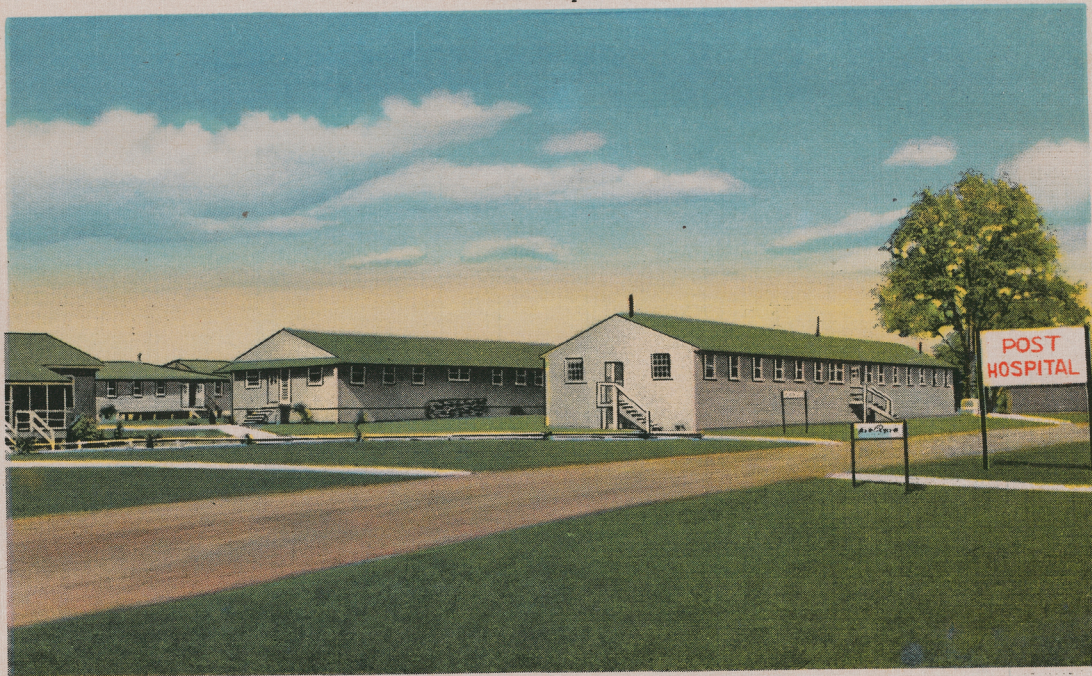


PHOTO BY U. S. ARMY SIGNAL CORPS



*One of the Fine Guest Houses*

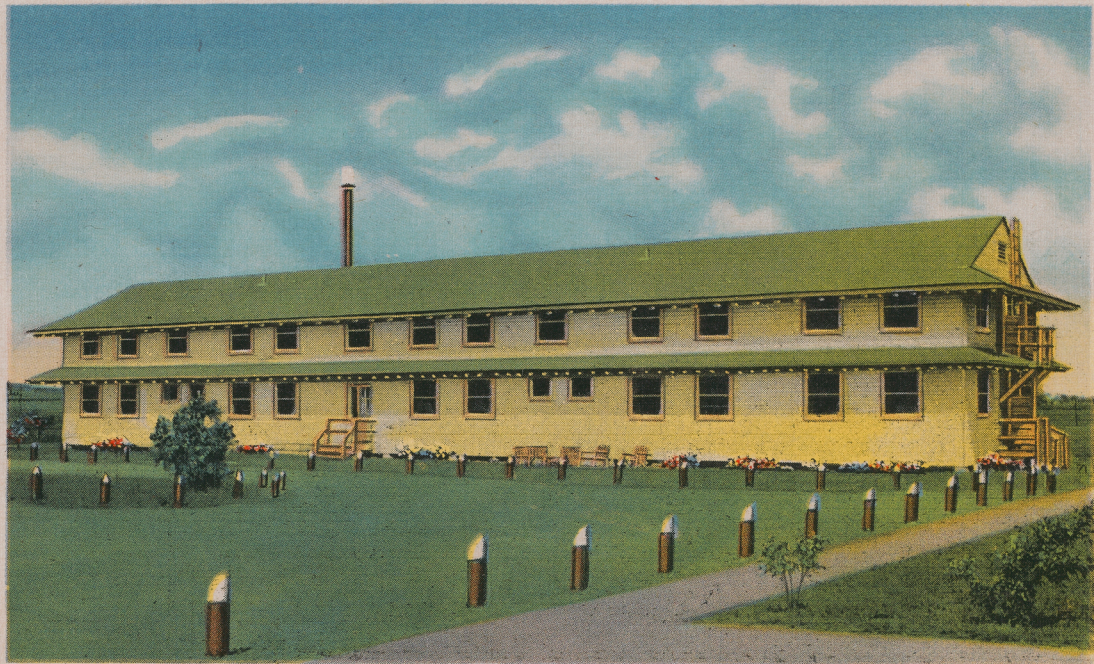


PHOTO BY U. S. ARMY SIGNAL CORPS



*The Color Guard at Review*



PHOTO BY U. S. ARMY SIGNAL CORPS



**CAMP**



**Breckinridge**

**MORGANFIELD  
KENTUCKY**



LEONA  
Mrs. #4 DUTIL

143 BARTLETT ST

LEWISTON, MAINE