

---

Programs 2010-2011 Season

Theatre Programs 2010-2020

---

Spring 4-2011

## Harvey Program [2011]

University of Southern Maine Department of Theatre

Follow this and additional works at: <https://digitalcommons.usm.maine.edu/theatre-programs-2010-2011>

 Part of the [Theatre History Commons](#)

---

### Recommended Citation

University of Southern Maine Department of Theatre, "Harvey Program [2011]" (2011). *Programs 2010-2011 Season*. 3.

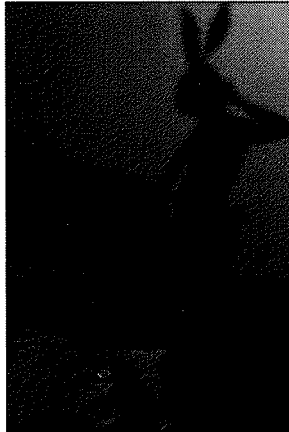
<https://digitalcommons.usm.maine.edu/theatre-programs-2010-2011/3>

This Program is brought to you for free and open access by the Theatre Programs 2010-2020 at USM Digital Commons. It has been accepted for inclusion in Programs 2010-2011 Season by an authorized administrator of USM Digital Commons. For more information, please contact [jessica.c.hovey@maine.edu](mailto:jessica.c.hovey@maine.edu).



UNIVERSITY OF  
SOUTHERN MAINE

*Department of Theatre presents*



# ***HARVEY***

by Mary Chase

Directed by William Steele

**April 22- May 1, 2011**

**Main Stage, Russell Hall  
USM Gorham Campus**

*Produced by special arrangement with Dramatists Play Service, Inc.*

## Director's Note

I've always loved this play for its wonderful humor and sense of optimism. Mary Chase wrote it at the end of World War II to cheer America up. Considering the world situation today and America's role in it, I think it's time for a revival. Hope you enjoy it as much as the cast, crew and I have in bringing it to you. ~ Bill Steele

### SETTING

Ohio, 1944

## USM Theatre Students and Faculty Shine

USM Theatre students have distinguished themselves with theatre companies throughout New England, such as Portland Stage Company, Maine State Music Theatre, The Public Theatre, The Children's Theatre of Maine, Good Theater, Mad Horse Theatre, The Company of Girls, Two Lights Theatre Ensemble, Maine Playwrights Festival and AIRE Theatre. Many of our alumni go on to perform in off and on Broadway and in Los Angeles.

Emmy Award-winning actor Tony Shalhoub (*Monk*) and award-winning playwright and screenwriter Lynn Sieffert are USM theatre graduates; as is Kurt Ela, who recently appeared in *All About Steve* with Sandra Bullock. USM students and faculty have worked in several films and TV series including *Empire Falls*, *Hotel Universe*, Stephen King's *Pet Sematary* and *Graveyard Shift*, *Mermaids*, *All the Vermeers in New York*, *Sundowning*, and *All My Children*.

Our professional faculty directors and designers work at some of the best regional theaters in the country such as those mentioned above, as well as The Walnut Street Theatre, The Alabama Shakespeare Festival, The Alley Theatre in Houston, North Shore Music Theatre, and The Seattle Repertory Theatre.

**Online ticketing now available!!**

**<http://www.usm.maine.edu/theatre>**

**Visit us on FACEBOOK**



# Harvey

by Mary Chase

Director  
Scenic & Lighting Design  
Costume Design  
Sound Design

William Steele  
Shannon Zura  
Hannah Brown  
Marcus Ingerson

### Cast

Elwood P. Dowd

Patrick Molloy

Veta Louise Simmons

Desiray Roy

Myrtle May Simmons

Abra Mueller

Miss Johnson

Laura Collard

Mrs. Chauvenet

Kaitlin McGinley

Ruth Kelly

Jerica Potvin

Duane Wilson

Edward Mawere

Lyman Sanderson

Simon Skold

William Chumley

Sam Rapaport

Judge Gaffney

Caleb Lacy

Betty Chumley

Dolly Constantine

Cab Driver

Lake Bellavance

*There will be a fifteen minute intermission.*

*Please, no photos are allowed during the performance.*

*Also please turn off beepers and phones as a courtesy to the actors and other audience members.*

## Artistic Staff

Sound Engineer	Marcus Ingerson
Hair and Makeup	Katie Foster
Assistant Lighting Designer	Neal Morton
Assistant Set Designers	Florence Cooley, Marcus Ingerson

## Production Staff

Production Manager	Shannon Zura
Stage Manager	Sebastian Ascanio
Assistant Stage Manager	Hannah Perry
Assistant Stage Manager	Nathan Lapointe
Technical Director	Perry Fertig
Carpenters	Brian Andrews, Dan Bernardini, Cat Ballou, Tom Campbell, August DeLisle, Sarah Dube, Scott Leland, Jonathan Marro, Rodney Nason, Angelica Pendleton, Emily Waller and the students of Stagecraft Practicum
Costume Director	Paula Peasley-Ninestein
Costume Instructor	Renee Garcia
Stitchers	Nimco Abbi, Sarah Blais, Shelby Caron, Laura Collard, Michael Frier, Hunter Jandreau, Madelyn James, Sage Landry, Desiray Roy, Rachel Siford, Katherine Smith
Master Electrician	Bobby Wilcox
Properties Master	Scott Leland
Properties Construction	Tom Campbell

## Production Crew

Deck Crew	August DeLisle, Nick Burich, Wyatt Grondin, Michael Johnson, John Lepper, Angelica Pendleton, Courtney Pomerleau
Wardrobe	Joseph Sibley, Kyle Dennis, Alyssa Day, Jane Martell
Light Board Operator	Dalton Kimball
Sound Board Operator	Marcus Leo

## Administrative Staff

Theatre Promotions Director	Stephen Legawiec
Arts Events Director	Emmanuelle Chaulet
Administrative Assistant	Lil Campbell
Box Office Manager	Karissa Nelsen
House Manager	Julie Higgins
Graphic Design	Leigh Raposo
Photography	Troy Bennett

## Artistic Staff Biographies

### Bill Steele - Director

William Steele has been teaching theatre and directing plays at the University of Southern Maine for many years. He is an award-winning playwright and drama critic, the author of four books on theater and film and a professional actor with many national and regional film, television, radio theater and commercial credits. Favorite plays directed include Edward Albee's *The Play About the Baby* at Mad Horse Theatre and *Who's Afraid of Virginia Woolf?* at Freeport Players; Bernard Slade's *Same Time, Next Year* at Good Theater; Robert Anderson's *Tea and Sympathy*, Sam Shepard's *Fool for Love*, David Auburn's *Proof*, Machiavelli's *The Mandrake*, David Rabe's *Streamers*, Arthur Miller's *All My Sons* and *A View from the Bridge*, Tennessee Williams *Small Craft Warnings*, Arthur Kopit's *Oh, Dad, Poor Dad* and Mark Medoff's *When You Comin Back, Red Ryder?* at USM. He has held governmental appointments to the Maine Arts Commission, the New England Foundation for the Arts and the Governor's Advisory Committee on Public Broadcasting.

### Shannon Zura - Scenic and Lighting Designer

Shannon recently designed the sound for Portland Stage Company's *The 39 Steps*, the lights for Portland Stage Company's *The Gin Game*, the set for InterAct Theatre Company's *Black Pearl Sings*, the lights and sound for Bloomsburg Theatre Ensemble's production of *Leading Ladies*, and the lights for Opera House Arts' *A Midsummer Night's Dream*. Shannon holds an MFA in Lighting Design from Temple University and is an Assistant Professor of Theatre at USM.

### Hannah Brown - Costume Designer

Hannah is a senior at the University of Southern Maine, majoring in theatre. After a year in New York studying at Parsons the New School for Design and interning for master puppeteer Basil Twist, Hannah returned to Maine to finish her degree inexpensively. Recent costuming credits include *The Late Henry Moss* (Mad Horse Theater Company), *Blood Wedding* (Tess Van Horn), *Inook and the Sun* (USM, "Sedna"

and the "Sea Monster") and *Sappho ou Suicide (Dance USM! and St. Lawrence Arts Center.)* Thanks to the cast and crew, to my supportive professors, still to the incomparable Kris Hall, friends and family. Enjoy the show!

### Cast Biographies

#### **Lake Bellavance** - Cab Driver

Lake has transferred from Lyndon State College as a sophomore to pursue his true passion, theatre arts, his current major at USM. Originally from Gardiner, Lake attended Gardiner High School. Here he performed his favorite roles which include "Elisha Whitney" in *Anything Goes* and "Mr. Stevie Cocker" in *Back to the 80's*. His concentration in the theatre program is performance.

#### **Laura Collard** - Miss Johnson

Laura is a junior anthropology major, theatre minor from Freeport. Past appearances at USM include *Clutter*, *BUG*, *Inook and the Sun* and *Dance USM!* Appearances elsewhere include: *The Out and Allied Project* with Add Verb Productions, *The Ensemble Project* with Figures of Speech Theater, *The Magic of Christmas* and work with the Freeport Community Players.

#### **Dolly Constantine** - Mrs. Chumley

Dolly Constantine is almost-a-junior theatre major. Transferring here her sophomore year, this is her first main stage role at USM. Her most recent performances include a student film retelling of the story of Isaac and Abraham and the role of Nurse in *Romeo and Juliet*. Dolly has met some splendid people thus far and is glad to have you here. For L.D.C.

#### **Caleb Lacy** - Judge Gaffney

Caleb is a second semester musical theatre major at USM and excited to perform in his first main stage production. Previous roles include "Reno" in *The Wild Party*, "Charlie" in Add-Verbs' *The Out and Allied Project*, "Tito" (understudy) in *Lend Me A Tenor*, and Assistant Directing *Triumph of Love*. He wishes to thank his family, the cast and crew.

#### **Kaitlin McGinley** - Ms. Chauvenet

Kaitlin is a senior theatre major from Lyman, ME. Past USM roles include "Julia" in *Lend Me A Tenor* and "Novice" in *Suor Angelica*. USM crew credits include Assistant Stage Manager for *Inook and the Sun*, and Fall musical coordinator for *The 25th Annual Putnam County Spelling Bee* and *Wild Party*. Kaitlin would like to thank her family and the Theatre Department for all their support! Enjoy the show!

#### **Edward Mawere** - Duane Wilson

Edward Mawere is a freshman musical theatre major from New York City, where he attended the Professional Performing Arts School. His credits include: "Caldwell B. Cladwell," *UrineTown* (PPAS), "Beadle Bamford," *Sweeney Todd* (PPAS), "Kegs," *Andrew Lippa's : The Wild Party* (USM). Edward would like to thank God, his family, friends, and teachers who always supported him and his dreams.

#### **Patrick Molloy** - Elwood P. Dowd

Patrick is a junior theatre major at the University of Southern Maine. Past stage credits include "Robert" in *Betrayal*, "Higgins" in *Titanic*, "Pops" in *The Pajama Game*, and "Bill Reynolds" in *Tea and Sympathy*. He would like to thank the department, Mr. Neuchatel, and his family for their support.

#### **Abra Mueller** - Myrtle May Simmons / Miss Tewksbury

Abra is a senior music education major from Portland, ME. This is her fourth University production and second main stage show. Her other USM credits include *Lend Me a Tenor* as "Diana," "Lidia" in Christopher Durang's *Titanic*, and *Once On This Island* as "Mama Eurlie," for which she received an Irene Ryan nomination. When she is not on stage, Abra is a professional choral musician, specializing in Renaissance polyphony and Gregorian chant.

#### **Jerica Potvin** - Ruth Kelly

Jerica is from Millinocket, Maine and is now a sophomore musical theatre major here at USM. She has most recently played "Mae" in Andrew Lippa's *The Wild Party*, a factory worker in *The Pajama Game*, and understudied the role of "Marcy Park" in *The 25th Annual Putnam County Spelling*

Bee. She is so excited to be a part of this wonderful show and hopes that you all have a great time.

**Samuel Rapaport** - William Chumley

Sam is a third year media studies major/ theatre minor and is delighted to be performing on the main stage again. Former roles at USM include "Chebukov" in *The Proposal*, "Lucky" in *Waiting for Godot* and "Bream" in *Moonchildren*. Sam also fancies himself as an audiophile with such sound design credits as this spring's *Taming of the Shrew* and last year's *Titanic* as presented by the Student Performing Artists. Beyond his work for the stage he currently interns as a sound engineer for WMPG.

**Desiray Roy** - Veta Louise Simmons

Desiray is a 5th year Theatre major from Little Deer Isle, Maine. Past USM Credits include: "Sedna, Goddess of the Sea" in *Inook and the Sun*, "The Bag Lady" in *Sylvia*, "Miss Preen" in *The Man Who Came to Dinner*, and "Mrs. Martin" in *The Bald Soprano*. She has also costume designed 3 main stage productions at USM (*Fool for Love*, *The Bear and The Proposal*, and *Airswimming*) and directed the Student Performing Artists 2010 Fall production of *Bug*, by Tracy Letts. Desiray has received 3 KCACTF design nominations and 1 directing nomination.

**Simon Skold** - Lyman Sanderson

Simon will think back with deep gratitude, as "Elwood" advises him to, on these generous moments of his youth at USM. From a silvery *Dance USM!*, to howling in *Inook*, (dis)robing *Bug*, and now, psychoanalyzing invisible lagomorphs, *Harvey* serves as the culmination to many good moments, and finally clips his perennial academic career. Thanks, USM, Mary Chase, everyone. Thanks.

## Production Staff

**Sebastian Ascanio** - Stage Manager

Sebastian is a senior theatre major with a focus in stage management. USM stage managing credits include *The Bald Soprano*, in our black box theatre, *Fool for Love (ASM)*, *The Bear*, *The Proposal*, *Inook and The Sun*, *Betrayal* and *Harvey*. Sebastian was privileged to attend the *Readers Theatre Institute Workshop* in Toronto with Dr. Walter Stump in 2009. Last summer he was honored to work at Maine State Music Theatre as a Stage Ops Apprentice and is excited to be returning to MSMT this summer working with the Stage Management department. Sebastian wishes to thank the entire faculty, staff and students in the theatre department who have made these past four years memorable and enjoyable.

**Perry Fertig** - Technical Director

In addition to his work at USM, Perry recently served as Technical Director for PORTopera's *Hansel and Gretel*. Before moving back to Maine, he was working in Philadelphia for Ursinus College, the Philadelphia Live Arts Festival, and the Philadelphia Theatre Company. He still occasionally works as a Flying Director for Foy Invention Enterprises, flying people for *Peter Pan*, *Wizard of Oz* among others.

## Thank you!

Maine State Music Theatre costume rental shop  
MSMT prop rental shop  
Miller and Campbell costume service, Milwaukee, WI  
Accent Dry Cleaners

## USM THEATRE SEASON 2011-2012

**October 7-13**

### **A View from the Bridge**

By Arthur Miller

Directed by Thomas Power

Passion can have a huge creative power - but not for Eddie Carbone; not in Brooklyn the year his only niece turned 17 - not by a long shot. Only Arthur Miller could have written this story - which is like a force of nature. You're not watching a play, you're watching a fire out of control. A blistering work from an American master.

**November 10-13**

### **Don't Ask Don't Tell**

An original production devised and directed by Wil Kilroy

The 1999 murder of a US Army Private by a fellow soldier ignited the debate of the controversial don't-ask-don't-tell policy. Told with intensity and humor, this original production is based on personal testimony - and articulates a question for which there may be no easy answers. This is theatre as it should be: immediate, electrifying and unforgettable.

**December 8-11**

### **Dance USM!**

Directed by Maria Tzianabos

Associate Director: Janette Hough

Experience the excitement and talent of student dancers and choreographers as USM presents an evening of thrilling and unique dance. Featuring professional guest choreographers, these special performances are a not-to-be-missed exhibition of the power and beauty of the world's oldest art form.

**February 2 - 5**

### **Eurydice**

By Sara Ruhl

Directed by Meghan Brodie

You can't really appreciate your love for your spouse until you try to bring her back from the dead. Sarah Ruhl's 21st century spin on a 3,000-year-old romance is a beautifully-rendered celebration of

the ecstasy and ache of love. This first-ever Actors' Lab Series highlights the most important element of theatre: the art of the actor.

**March 9 - 18**

### **The Drowsy Chaperone**

Music and lyrics by Lisa Lambert and Greg Morrison

Book by Bob Martin and Don McKellar

Directed by Assunta Kent

Musical direction by Edward Reichert

A co-production with the USM School of Music

Who says they're not making great musicals any more? This smash hit received more 2006 Tony awards than any other musical! When a die-hard fan plays his favorite cast album, the show miraculously comes to life! Enjoy the hijinks as mobsters try to force a Broadway producer to sabotage his leading lady's wedding. Toe-tapping tunes and silly situations abound in this hilarious valentine to the golden age of musicals.

**April 20-29**

### **Hedda Gabler**

By Henrik Ibsen

Directed by William Steele

One of the world's most harrowing plays, *Hedda Gabler* is a stick of dynamite underneath the mansion of domestic bliss. Would George have married Hedda if he had known what she was capable of? Who is she and *why* did she do what she did? One of the greatest dramas ever written by a playwright who changed theatre forever.

### **Season Flex Pass Early Bird Discount:**

**\$60 for two passes=**

**12 tickets to be used throughout the season**

**(includes only 4 tickets to the musical)**

**\$40 for one pass (6 tickets per pass)**

**Regular price: \$45 per pass after May 15, 2011**

**(207) 780-5151**

**[www.usm.maine.edu/theatre](http://www.usm.maine.edu/theatre)**



# The Kennedy Center

THE JOHN F. KENNEDY CENTER FOR THE PERFORMING ARTS

## The Kennedy Center American College Theater Festival- XLIII

The Kennedy Center American College Theater Festival is sponsored by the U.S. Department of Education; Dr. Gerald and Paula McNichols Foundation; The Honorable Stuart Bernstein and Wilma E. Bernstein; the Kennedy Center Corporate Fund; and the National Committee for the Performing Arts.

This production is entered in the Kennedy Center American College Theater Festival (KCACTF). The aims of this national theater education program are to identify and promote quality in college-level theater production. To this end, each production entered is eligible for a response by a regional KCACTF representative, and selected students and faculty are invited to participate in KCACTF programs involving scholarships, internships, grants and awards for actors, directors, dramaturgs, playwrights, designers, stage managers and critics at both the regional and national levels.

Productions entered on the Participating level are eligible for inclusion at the KCACTF regional festival and can also be considered for invitation to the KCACTF national festival at the John F. Kennedy Center for the Performing Arts in Washington, DC in the spring of 2011.

Last year more than 1,300 productions were entered in the KCACTF involving more than 200,000 students nationwide. By entering this production, our theater department is sharing in the KCACTF goals to recognize, reward, and celebrate the exemplary work produced in college and university theaters across the nation.