
[Programs 2010-2011 Season](#)[Theatre Programs 2010-2020](#)

Fall 11-2010

Betrayal Program [2010]

University of Southern Maine Department of Theatre

Follow this and additional works at: <https://digitalcommons.usm.maine.edu/theatre-programs-2010-2011>

 Part of the [Theatre History Commons](#)

Recommended Citation

University of Southern Maine Department of Theatre, "Betrayal Program [2010]" (2010). *Programs 2010-2011 Season*. 4.

<https://digitalcommons.usm.maine.edu/theatre-programs-2010-2011/4>

This Program is brought to you for free and open access by the Theatre Programs 2010-2020 at USM Digital Commons. It has been accepted for inclusion in Programs 2010-2011 Season by an authorized administrator of USM Digital Commons. For more information, please contact jessica.c.hovey@maine.edu.



UNIVERSITY OF
SOUTHERN MAINE

Department of Theatre presents



Betrayal

Written by Harold Pinter
Directed by Thomas A. Power

November 12-21, 2010

Main Stage, Russell Hall
USM Gorham Campus

Director's Notes

Betrayal is a story told in reverse and told the way one's mind might replay a memory. Not perfectly, but in a way that reflects things that stood out at the time, pauses that speak volumes, silences that say more than any of the words that surround them, light that connotes remembered places.

The characters speak with the luxury of distance, the clarity of hind sight and simplicity of selective memory. Perhaps this is just the recollection of one character, or could this be an objective snap shot of each character's flawed history? Many believe that Pinter's own married life was the inspiration for this play.

-Thomas Power

USM Theatre Students and Faculty Shine

USM Theatre students have distinguished themselves with theatre companies throughout New England, such as Portland Stage Company, Maine State Music Theatre, The Public Theatre, The Children's Theatre of Maine, Good Theater, Mad Horse Theatre, The Company of Girls, and the Two Lights Theatre Ensemble. Many of our alumni go on to perform in L.A., N.Y.C., off and on Broadway.

Emmy Award-winning actor Tony Shalhoub (Monk) and award-winning playwright and screenwriter Lynn Sieffert are USM theatre graduates.

Our professional faculty directors and designers work at some of the best regional theaters in the country such as those mentioned above, as well as The Walnut Street Theatre, The Alabama Shakespeare Festival, The Alley Theatre in Houston, North Shore Music Theatre, and The Seattle Repertory Theatre.

USM students and faculty have worked in several films and TV series including *Empire Falls*, *Hotel Universe*, Stephen King's *Pet Sematary* and *Graveyard Shift*, *Mermaids*, *All the Vermeers in New York*, *Sundowning*, *All About Steve*, and *All My Children*.

Visit us online:

<http://www.usm.maine.edu/theatre>

Betrayal

Harold Pinter

Director
Scenic Designer
Costume Designer
Lighting Designer
Sound Designer

Thomas A. Power
Jacqueline Cascella
Renee Garcia
Shannon Zura
Danny Gay

Cast

Robert
Jerry
Emma
Waiter

Patrick Molloy
Sage R. Landry
Meredith Lamothe
Alec Rose

Settings

Scene 1 - A pub, 1977, spring
Scene 2 - Later, Jerry's house study, 1977
Scene 3 - Flat, 1975, winter
Scene 4 - Robert and Emma's house, 1974, Autumn
Scene 5 - Hotel room, Venice, 1973
Scene 6 - Later, flat, 1973
Scene 7 - Later, restaurant, 1973
Scene 8 - Flat, 1971 summer
Scene 9 - Robert and Emma's house, bedroom, 1968

There is no intermission.

There is mild language in this production.

Please, no photos are allowed during the performance.

Also please turn off beepers and phones as a courtesy to the actors and other audience members.

Produced by special arrangement with Dramatists Play Service, Inc.

The music for *Betrayal* is the creation of Albert Solbjor, master flute maker and musician. Albert lives in Waltham MA and is widely recognized as one of the best Native American flute makers in the country. He composed this score specifically for our production.

Artistic Staff

| | |
|---------------------------|-----------------|
| Assistant Costume Design | Hannah Brown |
| Hair and Make Up | Desiray Roy |
| Assistant Lighting Design | Marcus Ingerson |

Production Staff

| | |
|--------------------------|--|
| Stage Manager | Sebastian Ascanio |
| Assistant Stage Managers | John Lepper, Katie Foster |
| Technical Director | Perry Fertig |
| Carpenters | Brian Andrews, Dan Bernardini, Cat Ballou, Tom Campbell, August Delisle, Sarah Dube, Madelyn James, Scott Leland, Jonathan Marro, Matt Morey, Angelica Pendleton, Emily Waller and the students of Stagecraft Practicum |
| Costume Director | Kris Hall |
| Stitchers | Costume Practicum |
| Master Electrician | Shannon Zura |
| Sound Engineer | Marcus Ingerson |
| Electricians | Jake Cote, Neal Morton, Danny Gay, Ashley Pettingill, James Futter, Taylor Rousseau, and Lighting Practicum |
| Properties Master | Hunter Jandreau |
| Properties Construction | Tom Campbell |

Production Crew

| | |
|-------------------------|---|
| Head of Deck Operations | Matthew Defiore |
| Deck Crew | Alexander Saliba, Joe McLeod |
| Wardrobe | Shawn Johnson, Sebastian King, Krista Lucht, Chelsea Marcantonio |
| Light Board Operator | Megan Towle |
| Sound Board Operator | Taylor Rousseau |

Administrative Staff

| | |
|-----------------------------|-----------------------|
| Theatre Promotions Director | Joyce Brown |
| Arts Events Director | Emmanuelle Chaulet |
| Administrative Assistant | Lil Campbell |
| Box Office Manager | Karissa Nelson |
| House Manager | Ellen Elizabeth White |
| Graphic Design | Leigh Raposo |

Sebastian Ascanio - Stage Manager

Sebastian is a senior theatre major with a focus in Stage Management. USM stage managing credits include *The Bald Soprano*, in our black box theatre, and *Fool for Love (ASM)*, *The Bear*, *The Proposal*, *Inook And The Sun* and *Betrayal* on the main stage. Sebastian was privileged to attend the *Readers Theatre Institute Workshop* in Toronto in 2009 and work for Maine State Music Theatre as an Apprentice in Stage Operations this past summer. Sebastian is proud to be stage managing this fantastic production and wishes to thank the theatre department for all their love and support.

Upcoming In Russell Hall

AIRSWIMMING

by Charlotte Jones
directed by Meghan Brodie
FEBRUARY 3-6

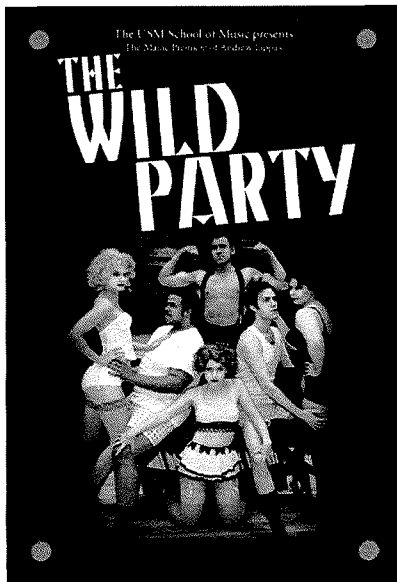
TRIUMPH OF LOVE

Music by Jeffrey Stock; Lyrics by Susan Birkenhead
Book by James Magruder
Based on the play by Marivaux
Director, Assunta Kent
Musical Director, Edward Reichert
A co-production with USM School of Music
MARCH 11 -20

HARVEY

by Mary Chase
directed by William Steele
APRIL 22 -May1

Information and Tickets
www.usm.maine.edu/theatre
(207) 780-5151



THE WILD PARTY

Decadence rules in the University of Southern Maine School of Music's production of "The Wild Party," a musical by Andrew Lipka, which opens in its Maine premiere on Nov. 19 in Cortbell Concert Hall on the Gorham campus. The 2006 Off-Broadway musical, adapted from a poem, offers a tale of love and redemption, set during the roaring 1920s.

Friday & Saturday, November 19 & 20 at 8pm
Sunday, November 21 at 5pm
Cortbell Concert Hall / USM Gorham Campus

Book, Music & Lyrics by Andrew Lipka
Based on a poem by Joseph Moncure March
Choreographed by Kelly Fantigrossi
Staged & Musically Directed by Edward Reichert

Tickets: \$15/\$10/\$5

For reservations and more information: 207.780.5555
www.usm.maine.edu/music

Sponsored by Saco & Biddeford Savings Institution
Mature Content: Not suitable for children



Visit us on **FACEBOOK**  and on **Twitter** 

www.usm.maine.edu/theatre

Check our Blog!

Biographies Cast Biographies

Patrick Molloy - Robert

Patrick is a sophomore theatre major. Past USM stage credits include "Pops" in *The Pajama Game* and "Bill Reynolds" in *Tea and Sympathy*. He will be appearing as "Elwood P. Dowd" in USM's production of *Harvey* this coming Spring. Patrick is honored to be involved in another USM production and wishes to thank his family and the department for all their encouragement and support.

Sage R. Landry - Jerry

Sage is a sophomore theatre major with a focus in Performance. Previous USM performance credits include "Inook" in *Inook and the Sun*, directed by Dr. Assunta Kent and "Al" in *Tea and Sympathy*, directed by William Steele. Sage would like to thank the amazing faculty at the Theatre Department for their dedication to their students, his parents for their love and constant support and the community for supporting the USM Department of Theatre. Hope you enjoy the show.

Meredith Lamothe - Emma

Meredith Lamothe is thrilled to be back on the University of Southern Maine (USM) stage. She is a senior theatre major with a focus in performance and will be graduating in May! Favorite credits include "Cecily" in *The Importance of Being Earnest* (The Good Theater), "Lilly" in *Tea and Sympathy* (USM) and "Luisa" in *The Fantasticks* (USM-SPA). This summer she was honored to be named "Best Actress" for the Portland, Maine 48 Hour Film Project. Many thanks to Tom, cast and crew for this incredible experience, also to you, the audience for making her career choice feel valid.

Alexander J. Rose - Waiter

Alec is a junior geology major from Orono, Maine. Past USM stage credits include "Phil" in *Tea and Sympathy*. He is the co-author and director of the award-winning ten minute play, *A Terrible Nuisance*, which was performed in the Spring of 2010. He is both pleased and humbled to be a part of the talented cast and crew of *Betrayal*.

Artistic Staff Biographies

Thomas A. Power - Director

Thomas A. Power is a professor of Theatre at the University of Southern Maine where he teaches acting, directing and playwriting. As the artistic director of the nationally recognized Children's Theatre of Maine during the 1970's, he authored many of the plays performed by that professional touring company. Professor Power collaborated with Kurt Vonnegut Jr. in a re-write of Vonnegut's play, *Happy Birthday*, *Wanda June* and staged a number of Vonnegut's other works during the 1980's with notable actors including Emmy award winning, Tony Shalhoub (Monk). Power's original musical, *Grannia*, was the winner of the 1990 Moss Hart Award and based on the life of the Irish pirate queen, Grace O'Malley. His full-length play, *Small Talk*, won the Vermont Playwrights Award in 2007 and his one-act, *The Bridge*, won the Stonnington Opera House one-act festival in that same year. Professor Power is a member of the Dramatist Guild.

Jacqueline Cascella- Scenic Designer

Jacqueline Cascella is a senior theatre major from Scarborough. Some of her credits include *The Pajama Game* (Assistant Director), *Gianni Schicci* and *Suor Angelica* (Assistant Stage Manager), and *The Bear* and *The Proposal* (Props construction). It has been an exciting challenge designing for Theatre in the Round, but she has enjoyed her experience working as the Set Designer for *Betrayal*, and hopes to design for many more productions.

Shannon Zura - Lighting Designer

Shannon Zura recently designed the Sound for Portland Stage Company's production of *The 39 Steps* and the lights for *The Gin Game*, the set and sound for InterAct Theatre Company's *Black Pearl Sings*, the lights and sound for Bloomsburg Theatre Ensemble's production of *Leading Ladies*, and the lights for Opera House Arts' *A Midsummer Night's Dream*. Additional design credits include the sound and lights for InterAct Theatre Company's productions of *Kiss of the Spider Woman* and *American Sublime* and the sound for Philadelphia Shakespeare Theatre's *The Complete Works of William Shakespeare (Abridged)*, *Romeo and Juliet*, and *The Taming of the*

Shrew. Shannon holds an MFA in Lighting Design from Temple University and is currently an Assistant Professor of Theatre at the University of Southern Maine.

Renee Garcia - Costume Designer

Renee Garcia recently designed costumes for *Lend Me a Tenor* at the University of Southern Maine, *Romeo and Juliet* at the Riverside Theatre Shakespeare Festival, *Green Whales* at the Unicorn Theatre, and *In Spite of Thunder: The Macbeth Project* at the Coterie Theatre. Additional design credits include *Nadya* at the University of Missouri-Kansas City and both *What the Bellhop Saw* and *Working* at Florida School of the Arts. She has also worked as the Production Designer for the independent film *Burning Man*. Renee is the Lecturer in Costume Design at the University of Southern Maine. She holds an MFA in Costume Design and Technology from University of Missouri-Kansas City.

Kris Hall - Costume Director

Kris is in her 10th season at USM. This summer she designed costumes for PORTopera's production of *Hansel and Gretel* at Merrill Auditorium. Other previous designs include *Bach at Leipzig* at Portland Stage, *Pump Boys and Dinettes* at Maine State Music Theatre; *Doubt* and *Almost Maine* at the Public Theatre in Lewiston; *Inook and the Sun* (an Inuit folktale told with masks, puppets and aerial dance) and the opera *Suor Angelica* at USM. Kris received her BA in Political Science from USM and her MFA in Studio Art from MECA. She also attended the Skowhegan School of Painting and Sculpture in 2006 on a full scholarship.

Perry Fertig - Technical Director

Perry Fertig is the Technical Director at USM. This past summer, he served as Technical Director for PORTopera's *Hansel and Gretel*. Before joining the Theatre Department last year, Perry was working in Philadelphia for Ursinus College, the Philadelphia Live Arts Festival, and the Philadelphia Theatre Company. He still occasionally works as a Flying Director for Foy Invention Enterprises.



The Kennedy Center

THE JOHN F. KENNEDY CENTER FOR THE PERFORMING ARTS

The Kennedy Center American College Theater Festival™ XLIII

The Kennedy Center American College Theater Festival is sponsored by the U.S. Department of Education; Dr. Gerald and Paula McNichols Foundation; The Honorable Stuart Bernstein and Wilma E. Bernstein; the Kennedy Center Corporate Fund; and the National Committee for the Performing Arts.

This production is entered in the Kennedy Center American College Theater Festival (KCACTF). The aims of this national theater education program are to identify and promote quality in college-level theater production. To this end, each production entered is eligible for a response by a regional KCACTF representative, and selected students and faculty are invited to participate in KCACTF programs involving scholarships, internships, grants and awards for actors, directors, dramaturgs, playwrights, designers, stage managers and critics at both the regional and national levels.

Productions entered on the Participating level are eligible for inclusion at the KCACTF regional festival and can also be considered for invitation to the KCACTF national festival at the John F. Kennedy Center for the Performing Arts in Washington, DC in the spring of 2011.

Last year more than 1,300 productions were entered in the KCACTF involving more than 200,000 students nationwide. By entering this production, our theater department is sharing in the KCACTF goals to recognize, reward, and celebrate the exemplary work produced in college and university theaters across the nation.