
[Programs 2003-2004 Season](#)[Theatre Programs 2000-2010](#)

Spring 2004

Company Program

University of Southern Maine Department of Theatre

Follow this and additional works at: <https://digitalcommons.usm.maine.edu/theatre-programs-2003-2004>

 Part of the [Theatre History Commons](#)

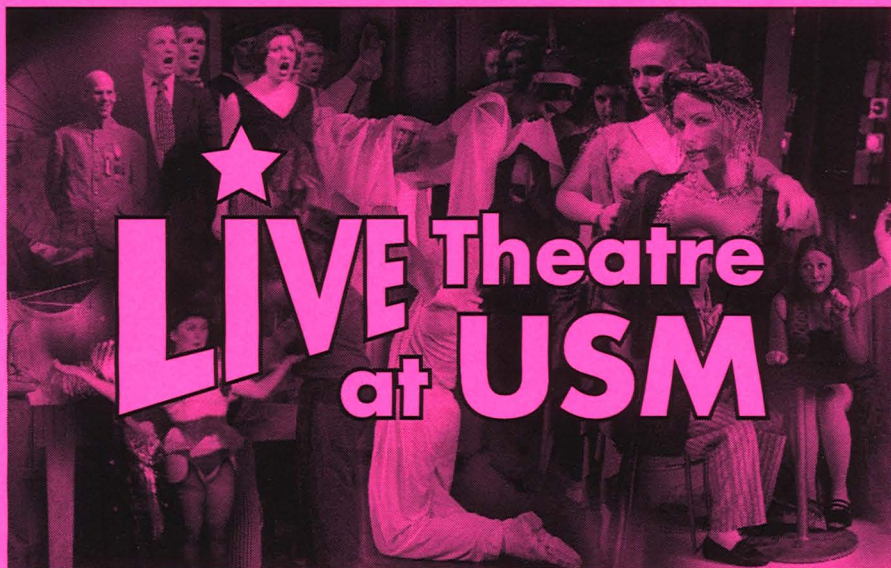
Recommended Citation

University of Southern Maine Department of Theatre, "Company Program" (2004). *Programs 2003-2004 Season*. 6.

<https://digitalcommons.usm.maine.edu/theatre-programs-2003-2004/6>

This Program is brought to you for free and open access by the Theatre Programs 2000-2010 at USM Digital Commons. It has been accepted for inclusion in Programs 2003-2004 Season by an authorized administrator of USM Digital Commons. For more information, please contact jessica.c.hovey@maine.edu.

ASSIONATE YOUTH, RENEWED CREATIVITY, INTENSE CLASSICS, BOLD NEW WORKS, EMERGING TALENT, PASSIONATE YO



SICS, BOLD NEW WORKS, EMERGING TALENT, PASSIONATE YOUTH, RENEWED CREATIVITY, INTENSE CLASSICS, BOLD N

COMPANY

A collaboration between the USM School of Music
and the USM Department of Theatre

music/lyrics by Stephen Sondheim, book by George Furth

directed by Wil Kilroy

musical direction by Ed Reichert

choreography by Raymond Marc Dumont

Main Stage, Russell Hall, USM Gorham campus

sponsored by

Drs. John and Elizabeth Serrage



UNIVERSITY OF
SOUTHERN MAINE



The Kennedy Center American College Theater Festival™
XXXVI

Presented and Produced by
The John F. Kennedy Center for the Performing Arts
Supported in Part by

The Kennedy Center Corporate Fund
The US Department of Education
Delta Airlines

The National Committee for the Performing Arts
Dr. and Mrs. Gerald McNichols

This production is entered in the Kennedy Center American College Theater Festival (KCACTF). The aims of this national theater education program are to identify and promote quality in college-level theater production. To this end, each production entered is eligible for a response by a regional KCACTF representative, and selected students and faculty are invited to participate in KCACTF programs involving scholarships, internships, grants and awards for actors, playwrights, designers, stage managers and critics at both the regional and national levels.

Productions entered on the Participating level are eligible for inclusion at the KCACTF regional festival and can also be considered for invitation to the KCACTF national festival at the John F. Kennedy Center for the Performing Arts in Washington, DC in the spring of 2004.

Last year more than 1,300 productions were entered in the KCACTF involving more than 200,000 students nationwide. By entering this production, our theater department is sharing in the KCACTF goals to recognize, reward, and celebrate the exemplary work produced in college and university theaters across the nation.

Company
music/lyrics by Stephen Sondheim
book by George Furth
Setting: New York City, 1975

Director
Musical Director
Choreography
Scenic Design
Costume Design
Lighting Design
Sound Design

Wil Kilroy
Edward Reichert
Raymond Marc Dumont
Charles S. Kading
Jodi Ozimek
Jamie Grant
Adam Ames

Cast

Robert
Sarah
Harry
Susan
Peter
Jenny
David
Amy
Paul
Joanne
Larry
Marta
Kathy
April
Waiter

Anthony J. Teixeira
Rosie Schoneberg
Brian Wilson
Kristin Messana
Graham Allen
Anna Gravel
Jason E. Cook
Casey Pratt
Nate Greene
Chrystal Thorne
Andrew Menard
Rachel Garfield
Sara Johnson-Berz
Ashley Emerson
Nick MacDonald

Orchestra

Piano/Conductor
Keyboard 2
Reed 1
Reed 2
Reed 3
Trumpet
Trombone
Bass
Percussion

Edward Reichert
Jeffrey Coggins
Sean Diette
Joshua Witham
Jason Mink
Matthew Lagarde
John Miley
Colin Winsor
Scott Ciprari

Sponsored by Drs. John and Elizabeth Serrage

Artistic and Production Staff

Choreographer	Raymond Marc Dumont
Vocal Coach	Edward Reichert
Fight Choreographer	Wil Kilroy
Assistant Sound Design	Stewart Caswell
Stage Manager	Joshua G.R. Hurd
Assistant Stage Manager	Jillian Shapleigh
Technical Director	Matthew Meeds
Carpenters	Stagecraft Lab
Costume Shop Supervisor	Kris Hall
Stitchers	Emily Carter, Chelsea Cook, Rachel Garfield, Anna Gravel
	Carrie Goodwin, Lindsey Higgins, Kate Law, Megan Marino
	Steven Noyes, Alicia Oullette, Alexis Pappas, Elizabeth Peabody
	Jesse Pilgrim, Jill Shapleigh and Costume Practicum
Electricians	Lighting Practicum
Properties Supervisor	Amanda Jordan
Properties Construction	David Branch, Neil James, Kyle Roberts
Assistant Lighting Designer	Michaela Wirth

Production Crew

Assistant Stage Managers	Kristen Kurtz, Shawn Reardon
Wardrobe	Elliott Conrad, Mia Perron, Lindsey Saxton, Chelsea Cook
Light Board Operator	Jameson Mathews
Sound Board Operator	Mark Willis
Follow Spot Operator	Dan Lally
Welders	Jacob Walton, Michaela Wirth

Administrative Staff

Arts Promotions Director	Mary Snell
Arts Events Director	Emmanuelle Chaulet
Administrative Assistant	Lil Campbell
Box Office Manager	Andrea Lopez
House Managers	Kira Turnage, Lindsey Higgins, Sean Demers
Graphic Design	Patrick Corey and Libby Barrett

Special Thanks:

Accent Dry Cleaners, Mad Horse Theatre Company, Margaret Thomas, David Groft, Diane Smith.

Company is presented through special arrangement with and all authorized performance materials are supplied by Music Theatre International, 421 West 54th Street, New York, NY 10019 Tel.: (212) 541-4684 Fax: (212) 397-4684
www.MTIShow.com

Act I: 75 Minutes Act II: 45 Minutes

There will be a fifteen minute intermission.

Please, no photos are allowed during the performance. Also please turn off beepers and phones as a courtesy to the actors and other audience members.

Director's Note

Stephen Sondheim, composer and lyricist for *Company*, felt that this was the musical in which he found his "artistic voice". First presented on Broadway in 1970, *Company* was deemed a 'concept' musical, winning multiple Tony Awards, including one for 'Best Musical'. Revived by New York's Roundabout Theatre Company in 1995 and in 1996 in London at the Donmar Warehouse, the themes of commitment, romance, and friendship are as vital now as when *Company* was originally produced. Although we've chosen to keep the setting of the 1970's, the prevalent theme of marriage is certainly making headlines recently as our country debates over its definition, making *Company* a timely production indeed!

-Wil Kilroy

Cast Biographies

Graham Allen - Peter

Graham has performed various roles at USM including "Dr. Parker" in *Bat Boy: The Musical* and "Cliff Bradshaw" in *Cabaret*. At The Waldo Theatre: "Will Parker", *Oklahoma!* In addition to performing the role of "Lysander" in *A Midsummer Night's Dream* at the Edinburgh Fringe Festival, he was a senior counselor at the Waldo Theatre Youth Camp for two seasons and he won 3rd Place in the Maine NATS Competition. Thanks to all of his family and friends.

Jason E. Cook - David

Jason E. Cook is a sophomore musical theatre major. Previously at USM he appeared as "Bat Boy" in *Bat Boy The Musical*, "The Emcee" in *Cabaret* for which he received an Irene Ryan nomination, and "the Steward" in *Into The Woods*. He was also seen in the Maine premiere of *Songs For A New World*. Favorite roles include "Mary Sunshine" in *Chicago*, "Ren" in *Footloose*, and "Snoopy" in *You're A Good Man Charlie Brown*. He has also received Best Cameo and Best Leading Male SPA Awards, and placed 1st at Maine NATS Musical Theatre competition 2003.

Ashley Emerson - April (Marta / Amy Understudy)

At USM Ashley has appeared in *Bat Boy* as "Shelley", in *Cabaret* as "Texas" and in *Songs for a New World*. Other appearances include *Chicago* ("Mona") with Portland Players and *Lucia di Lammermoor* (chorus) with Portland Opera Repertory Theater. A second-year vocal performance major from Bangor, Ashley will sing with the PORT chorus again this summer in their operas *I Pagliacci* and *Cavalleria Rusticana*.

Rachel Garfield - Marta

Rachel Garfield is a senior theater major, recipient of the Grannia Theater Scholarship. Most recently seen as "Maria" in Lyric Music Theater's *West Side Story*, Rachel has received two Student awards for her choreography in *Dance USM!* You may have seen her as the kiss girl in *Cabaret*. Rachel would like to thank Wil for letting her break her stereotype! Mom and Dad, Father God, thank you for your unfailing love and guidance.

Anna Gravel - Jenny

Anna is a senior theatre major. *Company* will be her last performance at USM. She is infinitely grateful for her time here and recently competed as an Irene Ryan candidate. Other roles include "Kate", *Dancing at Lughnasa*; "Mona", *Finger Food*; "Jack's Mother", *Into the Woods* and "Fraulein Kost", *Cabaret*. Anna thanks her family and friends for their love and support. Farewell...

Nate Greene - Paul

Nate is a senior theatre major and has been in many main stage shows.

Sara B. Johnson-Berz - Kathy

Sara is a sophomore musical theatre major from Limestone, Maine. She is pleased to be performing in her first main stage production at USM. Her other musical theatre experiences include roles in *Cats*, *West Side Story*, *Godspell*, *The Best of Broadway*, *Songs For A New World*, *Bat Boy*, and *The Rocky Horror Show*. She also was in the cast of *Asylum* and *Hard Candy*, which won first place in the state One-act drama festival division II, and has received an All-Festival cast award. Sara would like to thank God, her parents, siblings, and friends for their loyalty and support.

Nick MacDonald - The Waiter (David Understudy)

Nick is a sophomore music education major who found his way to USM from New Hampton, NH. He is so honored to be involved with such a remarkable cast of talented performers...Thank you for including me in your thoughts, your lives, your rehearsals.

Andrew Menard - Larry

Andrew, a senior and Maine native from Standish last performed "Brad" in *The Rocky Horror Show*. Other recent credits include *Bat Boy* (ensemble) and "Herr Schultz" in *Cabaret*. He placed first at the 2003 Maine Nats Musical Theatre Division, has been an Irene Ryan semifinalist, and sings with the USM Chamber Singers.

Kristin Messana - Susan

Kristin is a senior sociology major, minoring in music. Some of her past roles include Gloria Thorpe in *Damn Yankees*, Irene Roth in *Crazy For You* and Iris in *The Silver Lining* at The Schoohouse Arts Center. This is Kristin's first show on the main stage and she is thrilled to be working with such a talented cast and crew. She would like to thank her family for their undying love and support!

Casey Pratt - Amy

Casey Pratt is a junior theatre major from Greene, ME. Her recent credits include "Mayor Maggie" in *Bat Boy*, "Lady Macduff" in *Macbeth* and "Go To Hell Kitty" and ensemble in Portland Players production of *Chicago*. Casey would like to thank Wil, Ed, Ray, and Josh for all their hard work. Thanks to family and friends!

Rosie Schoneberg - Sarah

Rosie Schoneberg is currently a sophomore vocal performance major. Some of her favorite roles include "Sally" in *Cabaret*, "Woman" in the Maine Premiere of *Songs For a New World*, and "Meredith" in *Bat Boy: The Musical*. Most recently Rosie won the 2003 Best in Broadway category at the Best New Talent Awards in Los Angeles, California. Many thanks to family, friends, teachers and Dan.

Anthony J. Teixeira - Robert

Anthony J. Teixeira is a musical theatre major from Sandwich, MA. Previous USM roles include "Rapunzel's Prince" in *Into the Woods*, "Abdullah" in *Camiro Real*, "Ethan" in *We All Fall Down* (Irene Ryan Acting Nomination), "Rodolpho" in *A View From The Bridge*, and "Victor" in *Cabaret*. He would like to thank his family and friends, as well as the cast and crew, for their continued support.

Chrystal Thorne - Joanne

Chrystal is a two time Irene Ryan nominee and Grannia Theatre Scholarship recipient from Jay, Maine. Here, as a USM graduating theatre major you may have seen her in *Phaedra*, *Dance USM!*, *Into the Woods*, and as "Fraulein Schneider" in *Cabaret*. She would like to thank Wil for his six years of guidance, friendship, and unforgettable heart.

Brian Wilson - Harry

Brian Wilson is a senior Music Ed/Music Theatre major. Some roles he has performed on the main stage include Wong in the *Good Woman of Setzuan*, the Baker in *Into the Woods*, and Figaro in the *Marriage of Figaro*. He also appeared in *Songs for a New World* and *Bat Boy*. This marks the end of Brian's USM career as he plans to pursue greater endeavors in New York next year.

Understudies (If performing an announcement will be made)**Sara Baglione - Susan / Jenny Understudy**

Sarah has been acting, singing and dancing since the age of ten. She has had lead roles in numerous productions in school and community theatre. She is a freshman at University of Southern Maine where she is majoring in musical theatre. All of my love to Mom, Dad and Alexa!

Alexandra A. Dietrich - Sarah Understudy

Alexandra is a freshman musical theatre major from Freeport, Maine. She most recently appeared here at USM as "Mrs. Taylor" in the Maine premiere of *Bat Boy* and at Lyric Music Theatre in *West Side Story* as "Rosalina", where she had the great privilege of singing "Somewhere". Other favorite parts include "Robin" in *Godspell*, "Ronnette" in *Little Shop of Horrors*, and "Jan" in *Grease*. Alexandra is also a member of the USM Chamber Singers.

Zachary Trefsgar - Harry Understudy

Zachary is a Studio Art major entering his Freshman year. A graduate from Edward Little, he has been involved with performing and visual arts for ten years. Previous projects include the rebirth of the All Student Theatre Project, and directing Stephen Sondheim's *Sweeney Todd*, and Shakespeare's *Macbeth*.

Janelle LoSciuto - April / Kathy Understudy

Janelle is a sophomore vocal performance major. Recently she has played "Philia" in *A Funny Thing Happened on the Way to the Forum* and "Virtue" in *Anything Goes*. Other favorite roles include "Ariel" in *Footloose* and "Cassie" in *A Chorus Line*. Janelle is thrilled to have been a part of this production. Break a leg everyone!

Artistic Staff Biographies

Wil Kilroy - Director

Professor Wil Kilroy is part of the acting/directing faculty here at USM, having previously taught at Santa Monica College and for the Michael Chekhov Studio in Los Angeles. He has also taught master classes at the University of Illinois, University of Nebraska - Lincoln, Worcester State College, Grand Valley College in Michigan and this February at the University of California, San Bernadino. Directing credits include *Cabaret* and *Into The Woods* for the USM Musical Theatre Program, with prior directing at other venues such as Portland Players, Schoolhouse Arts Center and the play development program of the Association for Theatre in Higher Education. Wil has been honored by the Kennedy Center's American College Theatre Festival for his direction of the productions *A Midsummer Night's Dream*, *Everything Sprite* and *Purple Breasts* - which was also presented in Washington, D.C. for the National Breast Cancer Coalition. *Everything Sprite* was also chosen for a performance at New York's Village Gate. Wil is now a national committee member for the Kennedy Center's ACTF program. As a SAG actor, Wil recently enjoyed working on scenes in the HBO Film, *Empire Falls* and the TV pilot of *The Brotherhood of Poland, NH*. You may have also seen him on several recent cable commercials, or as the TV/Radio spokesperson for the Maine State Tax program. Last summer in New York, Wil appeared as Joe in a new play, *Scenes from a Romance*. With his own company in Maine, Renegade Productions, Wil has written and appeared in several shows, including *Tammy and Billy-Bob's Wedding*. He has also appeared at Mad Horse Theatre, the Chocolate Church in Bath, in *The Fantasticks* with Maine Play Productions, as Tom in the musical *Pulp Alley* for New York's West Bank Theatre, Philip in the Hollywood premiere of *Hotel Universe*, the daytime serials *All My Children* and *As the World Turns*, and as an alien on *Babylon 5*. In the summer, Wil is the Director of the USM Theatre Academy, a week-long acting intensive for ages 13-18, and is a founder of the National Michael Chekhov Association which presents a summer institute here at USM (For info: www.usm.maine.edu). Wil has been a recipient of a Kennedy Center scholarship, a Kennedy Center Bronze Medallion, the Moss Hart Award, USM's Outstanding Teacher/Scholar Award and has studied at the American Academy of Dramatic Art and the National Shakespeare Conservatory in New York, and holds theatre degrees from the University of Rhode Island and the University of Illinois.

Edward Reichert - Musical Director

Ed is proud being part of the Artist Faculty in the School of Music at USM where he works as the vocal coach within the new musical theater program. Last year he served as music director on *Cabaret* in Russell Hall, and has directed the Maine premieres of *Songs For A New World* and *Bat Boy: The Musical* in Corthell Hall. He's quite impressed with the talent on display in *Company*! Off-Broadway credits include Equity Library Theatre, Circle Rep, AMAS Musical Theatre, Chelsea Rep, and Riverside Shakespeare. The NYC Board of Education employed Ed as music director/arranger at Talent Unlimited High School, one of three performing arts programs in Manhattan. Lisa Valez (of Lisa Lisa & Cult Jam) was his star student there. Highlights (since moving to Maine): thirteen seasons in residence at Maine State Music Theatre; conducting *Evita* with the Portland Symphony Orchestra featuring Andrea McArdle and Adrian Zmed, *She Loves Me* (Walnut Street Theatre), and *Grease* (North Shore Music Theatre); staging *Titanic* (Seacoast Repertory Theatre), *I Love You, You're Perfect, Now Change* (Ogunquit Playhouse), and *Nunsense A-Men!* (Arundel Barn Playhouse); numerous productions for Portland

Stage Company; producing the critically acclaimed *Songbook Series* at the Portland Museum of Art beginning in 1994. Ed is a member of Actors' Equity Association and has appeared onstage as "Manny" in productions of *Master Class* opposite Lucie Arnaz (SRT), Rosemary Prinz (PSC), and Melinda Tanner (Florida Repertory Theatre). His collaborations with Marie Pressman took them to Eighty Eights in NYC with their gender-bending cabaret act *Loved Her, Hated Him!*, and the LeFrak Concert Hall at Queens College (his alma mater) with Maury Yeston's *December Songs*. He has been on staff at St. Joseph's College for the past eight years directing their annual musical, and his production of *Blood Brothers* at UNH was one of six finalists in the New England Division of the ACTF Competition. Upcoming: Musical Theatre Residency at California State Univ./Sacramento; directing *Perfect/Change* for Portland Players; *Follies* and *Kiss Me Kate* at MSMT; *3 Divas in Concert* (10th Anniv.) in Corthell Hall.

Raymond Marc Dumont - Choreographer

Ray recently came to USM as Director of Annual Giving & Stewardship/Special Events Coordinator. He also has managed to teach Musical Theatre Dance in the Theatre Department. Prior to coming to USM, Ray was Managing Director at Maine State Music Theatre. He has performed professionally all over the east coast and is a member of Actors Equity Association. He is a graduate of Boston University School of Management and calls Portland home. As always Ray shares any success he may experience with his partner, Rodney, and the amazing Dumont family that has always been his best audience.

Charles S. Kading - Scenic Designer

Charles has taught design and stage craft at USM for 25 years. His professional credits include *Titanic*, *Hans Christian Andersen*, *Ragtime*, and *Scarlet Pimpernel* for Maine State Music Theatre; *Big River*, *My Fair Lady*, *She Loves Me*, *Cabaret*, and *Annie* for Philadelphia's Walnut Street Theater; *Noises Off!* and *Blithe Spirit* at the Alabama Shakespeare Festival. He worked extensively at The Alley Theater in Houston where his credits include the US premiere of Alan Ayckbourne's *Henceforward*. Charles has also designed scenery for the Seattle Repertory Theatre, Intiman Theatre, Cabaret Repertory Theatre and Portland Stage. He is currently chair of the Theatre Department.

Jodi Ozimek - Costume Designer

Company is Jodi's fourth costume design at the University of Southern Maine. She is honored to spend the year at USM as the costume designer and lecturer for the Department of Theatre. Jodi spent the summer as an assistant designer at American Players Theatre. She received her M.F.A. in costume design from Purdue University, and her B.A. in theatre from Michigan State University. Recent design projects include *Little Shop of Horrors*, *Candida*, *Hamlet*, and *The Cherry Orchard*. USM designs include *The Effects of Gamma Rays on Man-in-the-Moon-Marigolds*, *Shakuntala* and *The Glass Menagerie*. Jodi thanks her husband for his undying love and support.

Jamie Grant - Lighting Designer

Jamie's previous designs here at USM have been *The Effects of Gamma Rays on Man-In-The-Moon Marigolds*, *Life in the Late 20th*, *We All Fall Down*, *Student Written One Acts*, and *Characters and Space*. At Good Theater he designed for *Little Me*, *Shirley Valentine*, *The Big Picture*, *Baby*, and *Loot*. Jamie has also worked at The Originals, designing *Eleemosynary* and *Nunsense 2*. At Mad Horse Theater he designed for *Suburban Motel*. Jamie is also the Resident Designer for the Portland

Ballet. Other designs include work done for Choreographers Tere O'Connor, Kevin Wynn, Chris Elam, Diane Coburn-Bruning, Lisa Hicks, and Nancy Salmon.

Matthew Meeds - Technical Director

Matthew Meeds joined the Department in September of 2000. Matthew came to us from the local theatre community where he has worked at the Mad Horse Theatre, the Public Theatre, and the Theatre at Monmouth, as well as "away" theaters such as George Street Playhouse in NJ, Syracuse Stage, and Pennsylvania Centre Stage. Most recently he designed the set for last year's production of *The Effects of Gamma Rays on Man-In-the-Moon Marigolds*.

Kris Hall - Costume Shop Supervisor

This is Kris' fourth year as Costume Shop Supervisor. Last semester she designed costumes for the student-written one-act *Ghosting*. This summer she will design costumes for Maine State Music Theatre's first show of the season, *Pump Boys and Dinettes*.

Joshua G. R. Hurd - Stage Manager

Josh is a senior theatre major here at USM. Recent productions he has stage managed include *A View From The Bridge* (a staged reading), *Characters In Space* directed by Nancy Salmon, and *Dance USM!* 2003. Last year Josh also received a nomination for the Kennedy Center American College Theatre Festival, Stage Manager's Fellowship. Most recently Josh was featured in Massabesic High School's production of *Once On This Island* as Daniel. Josh would like to thank God, his family and friends for all their love and support.

Jillian Shapleigh - Assistant Stage Manager

Jillian is a senior theatre major from Bridgewater, MA. Other credits include: "Germaine" in *Picasso at the Lapin Agile*, *Multimedia@tion*, *Into the Woods* and *Cabaret*. She would like to thank Wil, Ed, Ray, Josh and the cast for being cooperative and helpful.

For a complete list of our events,
please check
www.usm.maine.edu/theater
www.usm.maine.edu/music

THE public THEATRE

Lewiston/Auburn's Professional Theatre

www.thepublictheatre.org

**TICKET
PRICE:**
\$14 Stu/Sr
\$16 Adults

★ **RED HERRING** by Michael Hollinger Oct 10 - 19

It's "Sam Spade" meets "I Love Lucy" in this hilarious 1950's film noir comedy about marriage and other explosive devices.

★ **THE BELLE OF AMHERST** by William Luce Nov 7 - 16

Back by popular demand, Ellen Crawford from the hit NBC series *ER* stars in this enchanting one-woman play, based on the life of Emily Dickinson.

★ **THE WIND IN THE WILLOWS** Dec 12 @ 8pm, Dec 13 @ 2 & 6 pm, Dec 14 @ 2pm

An original and delightful adaptation of this classic book starring Michael O'Brien and fiddler Lissa Schneckenberger. A great gift for the whole family!

★ **MARVIN'S ROOM** by Scott Mc Pherson Jan 30 - Feb 8

When the chips are down, your family will be there - whether you want them or not, in this humorous and touching play about the strength of family ties.

★ **ORPHANS** by Lyle Kessler Mar 19 - 28

Three orphans form an unforgettable family in a play that will touch the nerves and hearts of all who see it. Contains adult language.

★ **PRIVATE LIVES** by Noel Coward May 7 - 16

Some old flames just won't go out in this classic comedy about love, second chances and the often fine line between affection and exasperation.

Voted "BEST THEATRE COMPANY" two years in a row - Portland Phoenix readers poll
Professional theatre at an affordable price! **CALL 782-3200**

Thurs - Sat @ 8pm, Sun @ 2pm Theatre Location: Lisbon & Maple St., Lewiston
Season Underwriters: Sun Journal, WMTW/KISS 99.9, The Wolf, Platz Associates, WOXO, WTME, WCNN, WHOM, NEA

Portland Opera Repertory Theatre



Our 10th Season
July 2004

Join the
Celebration

Web: portopera.org
Tel: 207-879-7678
Email: portopera@aol.com

Dance USM!

directed by Maria Tzianabos

Main Stage, Russell Hall, USM Gorham campus

Thursday, April 29-Sunday, May 2
Evenings April 29-May 1 at 7:30 p.m.
Sunday matinee May 2 at 5 p.m.

USM Theatre Box Office 780-5151

For special accommodations and access
inquiries, call 780-5146, TTY 780-5646.

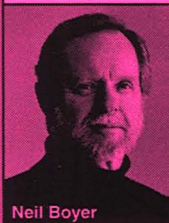
www.usm.maine.edu/theater



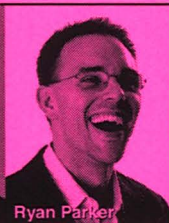
UNIVERSITY OF
SOUTHERN MAINE

\$10 general public, \$7 seniors, \$5 students and USM faculty/staff

USM School Of Music 2003-2004 Faculty Concert Series



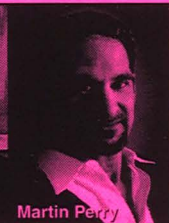
Neil Boyer



Ryan Parker



Robert Lehmann



Martin Perry

Fridays, 8 p.m., Corthell Concert Hall, \$10/\$7/\$5 Tickets 780-5555

February 27

In the Autumn of their Years


Neil Boyer, oboe, and friends

Sponsored by **FILENE'S**

April 2

USM Jazz!


Ryan Parker, piano and friends

Sponsored by 
KeyBank

April 23

Robert Lehmann, violin and

Martin Perry, piano

sponsored by 
**SACO & BIDDEFORD
Savings Institution**

Special event! March 6

2004 Honors Recital

The USM School of Music's way of
recognizing excellence in student
solo performance.



UNIVERSITY OF
SOUTHERN MAINE

www.usm.maine.edu/music

Call the box office at 780-5555 for information, access inquiries, and reservations. TTY 780-5646