

MAINE GEOLOGICAL SURVEY

John R. Rand, State Geologist

MAINE PEGMATITE MINES AND PROSPECTS
AND
ASSOCIATED MINERALS

Minerals Resources Index No. 1

Department of Development of Industry and Commerce

Augusta, Maine

March 1, 1957

QE
119
A32
no. 1

LIBRARY - ~~UNIVERSITY OF MAINE~~
UNIVERSITY OF MAINE
at PORTLAND - GORHAM

UNIVERSITY OF MAINE
~~Gorham~~
CAMPUS
LIBRARY
PORTLAND-GORHAM

QC
119
A32
no. 1

MAINE GEOLOGICAL SURVEY

John R. Rand, State Geologist

MAINE PEGMATITE MINES AND PROSPECTS

AND

ASSOCIATED MINERALS

LIBRARY - GORHAM CAMPUS
UNIVERSITY of MAINE
at PORTLAND - GORHAM

Minerals Resources Index No. 1

Department of Development of Industry and Commerce

Augusta, Maine

March 1, 1957

79494

MAINE PEGMATITE MINES AND PROSPECTS
and
ASSOCIATED MINERALS

TABLE OF CONTENTS

	Page
Introduction	3
Acknowledgments	3
Explanatory Considerations	3
Selected Bibliography	4
Pegmatite Mines and Prospects—Alphabetical Index	6-22
Pegmatite Mines and Prospects—County-Township Index	23-25
Pegmatite Mines and Prospects—Map Index	27-29

LIST OF ILLUSTRATIONS

	Page
Southwestern Maine—Pegmatite Localities and Access Highways	5
Index Map Showing Mining Districts and Detailed Plate Locations	26
Plate A—Rumford-Rangeley Area	30
Plate AA—Rumford-Newry Area	31
Plate B—Auburn-Bethel Area	32
Plate BA—Auburn-Mechanic Falls Area	33
Plate BB—Buckfield-Paris Area	34
Plate BC—West Paris-Greenwood Area	35
Plate BD—Albany-Waterford Area	36
Plate BE—Bethel-Stoneham Area	37
Plate C—Topsham-Edgecomb Area	38
Plate CA—Topsham Area	39
Plate CB—Phippsburg-Georgetown Area	40
Plate D—Sebago Area	41
Plate E—Warren-Cushing Area	42
Plate F—Vienna Area	42
Plate G—Waterboro-Sanford Area	42
Plate H—Springfield-Lakeville Area	43

MAINE PEGMATITE MINES AND PROSPECTS

and

ASSOCIATED MINERALS

Introduction

This publication is the first of a series which is designed essentially to provide basic information on the locations of mineral occurrences in Maine which may be of commercial importance or popular interest. Contained in this publication is a compilation of some 184 pegmatite mines and prospects, their locations, associated minerals and persons to contact for further information or for permission to visit. The compilation is not represented to be complete, and is offered primarily as a preliminary guide-book which may aid mineral collectors and commercial mining organizations in appraising Maine's wealth in feldspar deposits and their associated industrial and exotic minerals.

The pegmatites of Maine are essentially coarse-grained concentrations of feldspars and quartz which occur as pod-shaped or sheet-like bodies ranging from a few inches to over 4,000' in length. They have been mined for over 100 years for potash feldspar, with occasional supplementary production of quartz, sheet mica, beryl, spodumene, and other industrial minerals. They are famous throughout the world as sources of semi-precious gem minerals including varieties of tourmaline, beryl, topaz, and rose quartz. Hundreds of mineral collectors scratch over waste-rock dumps every summer searching for material to add to their collections or to make into jewelry. This publication should serve collectors well, to help them to locate the more publicized collecting grounds, and to provide them with names of owners or others who should be able to help them in their efforts.

It is important to point out, however, that pegmatites are of much greater value economically than merely as sources of interesting minerals for collections. To date, something over one million tons of potash feldspar has been shipped from the pegmatites of Maine for use in ceramic products, pottery, abrasives, and cleaning compounds. With the development of efficient mining methods and mineral concentrating techniques, Maine pegmatites have become a valuable source of low-cost feldspar which should enjoy a profitable position in the national market.

Acknowledgments

The information presented in this publication has been collected by study of existing literature and by field examination. Most of the information contained herein was collected during the summer of 1956 by Dabney W. Caldwell, Department of Geology, Wellesley College, Wellesley, Massachusetts, and compiled for publication by Mrs. Muriel B. Austin, Department of Geology, Colby College, Waterville, Maine. A small percentage of the mines listed were added by the State Geologist during the pre-publication field check. Many interested persons have contributed information freely for the benefit of all. The Maine Geological Survey appreciates especially the fine cooperation and assistance extended by Howard M. Irish and Charles F. Marble of Buckfield and Stanley I. Perham of West Paris.

Explanatory Considerations

Although this publication represents the most complete compilation to date on pegmatite mines and prospects, there are undoubtedly many properties and associated minerals which have been missed because of the limited time available in which to make the collection. In some instances, locations marked on the maps in the back of the book may be correct only within one-half mile or so. The outlined area on Plate CB in Phippsburg was mapped in detail by the United States Geological Survey during World War II, and may serve as an example of the high frequency of pegmatite occurrences throughout the pegmatite belt which extends from Boothbay to Rangeley in the Southwestern part of Maine.

The minerals which are listed here for the various properties represent only those minerals to which literature or personal references were readily available at the time the compilation was made. It is hoped that as time passes, collectors and other interested persons will submit new or additional data to the Maine Geological Survey so that subsequent revisions of this publication may be of increasing value and accuracy. A ruled page is provided at the end of the mine localities list for filing additional information which may be acquired on collecting trips or commercial investigations. It is important to note that most of the properties listed are privately owned, and many are in active operation during the summer months. In order to observe the rights of the landowner, and to avoid possible injury from dynamiting or other production activities, an interested visitor should always acquire permission before entering upon any property listed herein.

Selected Bibliography

Pegmatite Investigations, 1942-45, New England. United States Geological Survey Professional Paper 255, by E. N. Cameron and others. 1954. 352 pp., 48 pls., 139 figs.

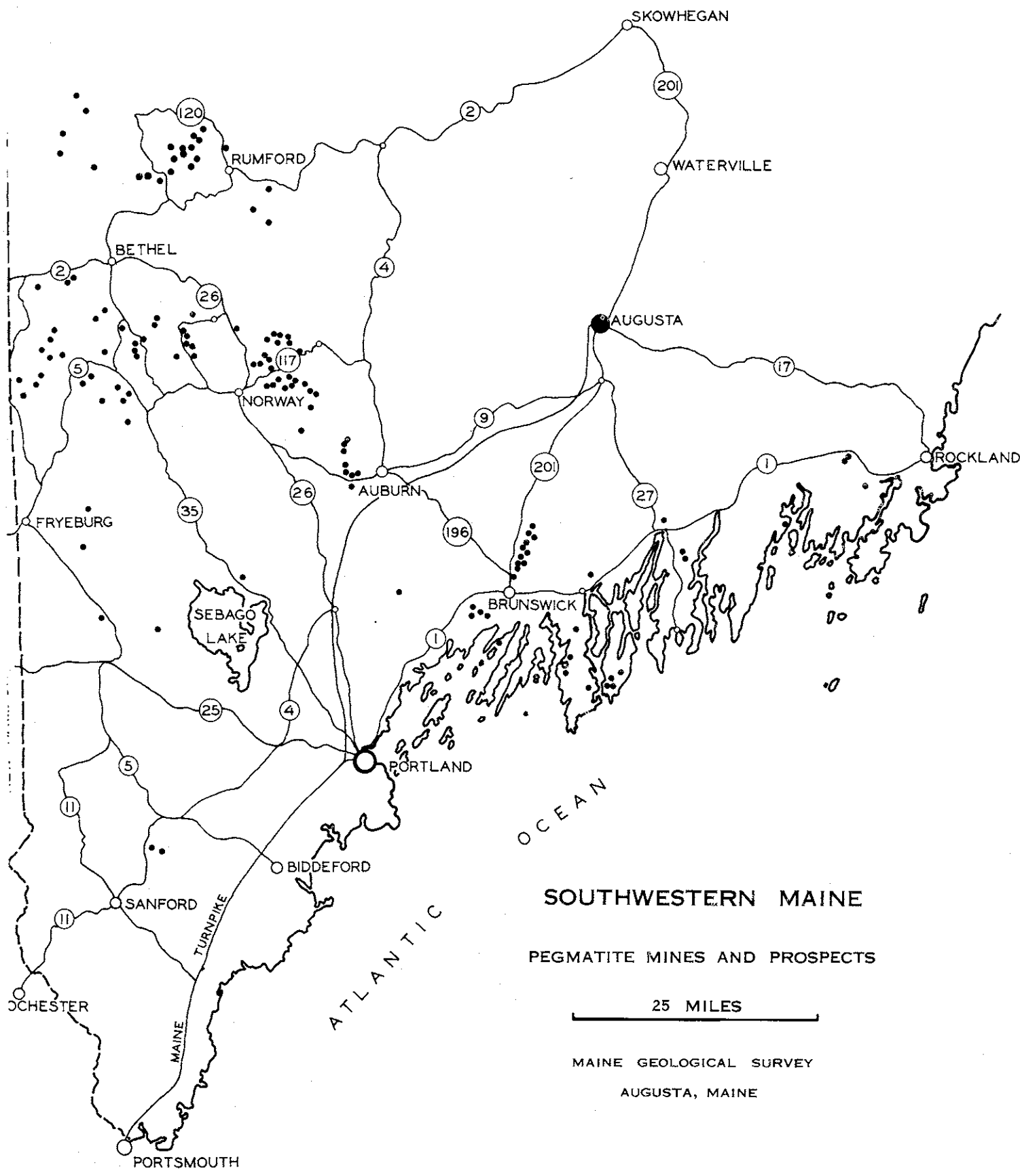
Geology of the pegmatites and associated rocks of Maine, including feldspar, quartz, mica, and gem deposits. United States Geological Survey Bulletin 445, by E. S. Bastin. 1911. 152 pp., 19 pls.

Economic geology of some pegmatites in Topsham, Maine. Maine Geological Survey Bulletin 5, by V. E. Shainin. 1948. 32 pp., 9 figs.

Pegmatites and associated rocks in the Newry Hill area, Oxford County, Maine. Maine Geological Survey Bulletin 6, by V. E. Shainin and L. F. Dellwig. 1955. 58 pp., 11 figs., 2 pls.

Handbook for a Week with Maine Minerals, by Neil A. Wintringham. Holiday Hill Press, 1485 Force Drive, Mountainside, New Jersey. 1955. 2nd ed., 176 pp., maps and figs.

Maine Mines and Mineral Locations, by Philip Morrill. Dillingham Natural History Museum, Naples, Maine. 1956. 47 pp., 12 maps.



SOUTHWESTERN MAINE

PEGMATITE MINES AND PROSPECTS

25 MILES

MAINE GEOLOGICAL SURVEY

AUGUSTA, MAINE

PEGMATITE MINES AND PROSPECTS — ALPHABETICAL INDEX

Map Number	Mine or Prospect	Township	USGS Quadrangle	Contact for Further Information	Minerals Reported
CA30	Adderton Quarry	Bowdoinham	Bath	Mrs. Frank Adderton, Bowdoinham	Feldspar
BE10	Aldrich Prospect	Stoneham	Bethel	Rupert Aldrich, South Paris	Beryl, Feldspar, Muscovite, Pyrite, Serpentine
BE4	Anderson Mine	Mason	Bethel	Lawrence Anderson, East Stoneham	Muscovite
B9	Andrews Ledge	Stoneham	Bethel	Mrs. W. N. Swett, Norway	Beryl, Muscovite
A4	Baldpate Mt. Area	Andover West Surplus	Old Speck	Inquire locally	Beryl (Aquamarine)
BB16	Barrett Prospect	Hebron	Poland	J. L. Barrett, Hebron	Beryl, Feldspar, Garnet, Muscovite, Tourmaline (Black)
CB3	Basin Quarry	Phippsburg	Bath	Inquire locally	Feldspar, Garnet, Muscovite
BC13	BB #1 Quarry	Norway	Bryant Pond	Stanley I. Perham, West Paris	Garnet, Muscovite, Pollucite, Spodumene
BD14	Beech Hill Mine (Waterford Mica)	Waterford	Fryeburg	D. R. Kimball and G. Packard, South Waterford	Biotite, Feldspar (Microcline), Garnet, Muscovite, Quartz
AA3	Belliveau Prospect	Rumford	Rumford	Alfred J. Boucher, Isthmus Road, Rumford	Feldspar, Muscovite, Quartz
BA5	Bell Prospect (Giddings Prospect)	Minot	Poland	Bell Minerals Company, West Paris, or Harold Giddings, West Minot	Feldspar, Muscovite, Tourmaline (Black)
E4	Benner Prospect	Waldoboro	Waldoboro	Merton Benner, Waldoboro	Feldspar, Muscovite, Quartz
BB5	Bennett Quarry	Buckfield	Buckfield	Mrs. Blanche Bennett, Buckfield, or Bell Minerals Company, West Paris	Amblygonite, Apatite, Arsenopyrite, Beryl, Cassiterite, Columbite, Feldspar, Garnet, Lepidolite, Muscovite, Pollucite, Quartz, Rhodochrosite, Spodumene, Tantalite, Topaz, Tourmaline
BA10	Berry Quarry	Poland	Poland	W. Levin, R.F.D. #4, Auburn	Apatite, Beryl, Cassiterite, Feldspar (Microcline), Lepidolite, Muscovite, Tourmaline

PEGMATITE MINES AND PROSPECTS — ALPHABETICAL INDEX — Continued

Map Number	Mine or Prospect	Township	USGS Quadrangle	Contact for Further Information	Minerals Reported
BB1	Bessey Mine	Buckfield	Buckfield	Stanley I. Perham, West Paris	Arsenopyrite, Beryl, Feldspar, Muscovite, Quartz (Smoky, with liquid inclusions), Sphalerite
AA1	Binford Prospect	Roxbury	Rumford	Victor Binford, Roxbury	Muscovite
AA6	Black Mtn. Quarries	Rumford	Rumford	Maine Products Co., 820 Greenwich St., New York, N. Y., or Mrs. Frank Greenwall, 270 Madison Ave., New York 17, N. Y.	Apatite, Beryl, Cassiterite, Columbite, Feldspar (Cleavelandite), Garnet, Hornblende, Lepidolite, Magnetite, Muscovite, Purpurite, Quartz, Sphene, Spodumene, Tantalite, Tourmaline, Uraninite
CA31	Booker Prospect	Bowdoinham	Bath	Emery W. Booker, Brunswick	Feldspar
BB10	Bowker Mine	Paris	Buckfield	Howard M. Irish, Buckfield	Quartz (Rose)
G2	Brock Prospect	Lyman	Buxton	Henry Brock, Alfred	Beryl, Feldspar, Muscovite
AA7	Brown-Thurston Prospect	Rumford	Rumford	Mrs. Tom Brown, Bethel or Lee Thurston, Rumford Center	Beryl, Cassiterite, Columbite, Feldspar (Cleavelandite), Garnet, Muscovite, Quartz, Tourmaline
BD10	Bumpus Quarry	Albany	Bethel	Carolina Pyrophyllite Company, Greensboro, N. C.	Beryl, Feldspar (Plagioclase), Muscovite, Quartz (Rose)
BE8	Butters Mt. Area	Stoneham	Bethel	Inquire locally	Beryl (Golden), Garnet
AA10	Carver Prospect	Rumford	Rumford	Dana Putnam, Rumford Corner	Beryl, Feldspar, Purpurite
G1	Caton Prospect	Waterboro	Buxton	Walter Caton, Saco	Feldspar, Quartz
CA21	Chapman Mine	Topsham	Bath	Charles Chapman, Topsham	Feldspar, Quartz
	Clark Mine (Wentworth Mica Mine)	Canton (No Plate covers area)	Buckfield (2.25 miles N. 47° W. of Bridge in Center of Canton village)	Charles House, Rumford Center	Chrysoberyl, Muscovite

PEGMATITE MINES AND PROSPECTS — ALPHABETICAL INDEX — Continued

Map Number	Mine or Prospect	Township	USGS Quadrangle	Contact for Further Information	Minerals Reported
B5	Colton Hill Prospect	Stow	Fryeburg	Consolidated Feldspar Division, International Minerals and Chemical Company, Topsham	Large Pegmatite (Feldspar, Quartz)
D4	Chute Prospect	Casco	Sebago Lake	Chute Bros. Lumber Company, South Casco	Feldspar
BB22	Conant Mine	Hebron	Poland	Bell Minerals Company, West Paris	Feldspar
CA32	Consolidated Quarries	Bowdoinham	Gardiner	Consolidated Feldspar Division, International Minerals and Chemical Company, Topsham	Feldspar
∞ CA29	Consolidated Quarry	Bowdoinham	Bath	Consolidated Feldspar Division, International Minerals and Chemical Company, Topsham	Biotite, Feldspar, Muscovite, Quartz
CB4	Consolidated Quarry	Georgetown	Bath	Consolidated Feldspar Division, International Minerals and Chemical Company, Topsham	Autunite, Beryl, Feldspar, Gummite, Lepidolite, Muscovite, Quartz, Tourmaline
CA17	Consolidated Quarry	Topsham	Bath	Consolidated Feldspar Division, International Minerals and Chemical Company, Topsham	Feldspar
CA26	Consolidated Quarry	Topsham	Bath	Consolidated Feldspar Division, International Minerals and Chemical Company, Topsham	Beryl, Biotite, Feldspar, Muscovite, Quartz, Tourmaline (Gem Stock)
CA10	Consolidated Quarry #1	Topsham	Bath	Consolidated Feldspar Division, International Minerals and Chemical Company, Topsham	Biotite, Feldspar, Garnet, Magnetite

PEGMATITE MINES AND PROSPECTS — ALPHABETICAL INDEX — Continued

Map Number	Mine or Prospect	Township	USGS Quadrangle	Contact for Further Information	Minerals Reported
CA11	Consolidated Quarry #2	Topsham	Bath	Consolidated Feldspar Division, International Minerals and Chemical Company, Topsham	Biotite, Feldspar, Muscovite, Quartz
C9	Coombs Quarry	Bowdoin	Gardiner	Benjamin Coombs, Cherry Street, Bath	Beryl, Biotite, Feldspar, Garnet, Muscovite, Pyrite, Quartz, Tourmaline (Black)
BB3	Cummings Mine	Buckfield	Buckfield	Horace Cummings, Buckfield	Quartz
C6	Cunningham Mine	Georgetown	Boothbay	Walter Cummings, Georgetown	Feldspar
D1	Cutler Mtn. Area (Frenchman's Gold Mine)	Hiram	Kezar Falls	Lester Hammond, Hiram	Feldspar, Muscovite, Quartz
CB1	Davis Mine	West Bath	Bath	Mrs. Warren Davis, West Bath	Apatite, Beryl, Feldspar (Microcline), Garnet, Muscovite, Quartz, Tourmaline
B3	Deer Hill Area (Big Deer Hill)	Stow	Fryeburg	Harry Eastman, Western Maine Forest Nursery, Fryeburg	Feldspar, Garnet, Muscovite, Pyrite, Quartz (Amethyst; Crystal)
BC4	Diamond Ledge (Yale or Yates Quarry)	Greenwood	Bryant Pond	Rolly Hayes, West Paris	Quartz (Crystal)
CA6	Direnzo Prospect (Cormier Farm Prospect)	Topsham	Bath	Donald Direnzo, Topsham Feldspar Company, Topsham	Feldspar, Muscovite, Quartz
BE6	Donahue Prospect	Albany	Bethel	Ralph Kimball, Portland	Beryl, Feldspar, Muscovite, Quartz, Tourmaline (Black)
BB24	Dudley Prospect (Neville-Owls Head)	Buckfield	Buckfield	Alfred MacKay, Norway	Amblygonite, Beryl, Pollucite
BC14	Dunn Mine	Norway	Bryant Pond	Napoleon Pelletier, Norway	Beryl, Feldspar, Muscovite, Quartz

PEGMATITE MINES AND PROSPECTS — ALPHABETICAL INDEX — Continued

Map Number	Mine or Prospect	Township	USGS Quadrangle	Contact for Further Information	Minerals Reported
CA28	Dunn Prospect	Bowdoinham	Bath	Kenneth Dunn, Bowdoinham	Feldspar
AA15	Dunton Mine (Newry Gem Mine)	Newry	Rumford	Whitehall Company, Inc., 17 Battery Place New York 4, N. Y.	Amblygonite, Apatite, Autunite, Beryl, Beryllonite, Cassiterite, Chalcedony, Cookeite, Eosphorite, Feldspar, Francolite, Herderite, Lepidolite, Microfite, Montebrazite, Muscovite, Opal, Pollucite, Pyrite, Quartz, Red- dingite, Siderite, Sphalerite, Spod- umene, Torbernite, Tourmaline (Gem Stock), Triphylite, Uraninite, Viva- nite, Zircon
BE9	Durgin Mt. Area	Stoneham	Bethel	Inquire locally	Beryl
AA13	Elliot Mine	Rumford	Rumford	George Elliot, Rumford	Apatite, Beryl, Feldspar, Garnet, Muscovite, Quartz, Tourmaline (Black)
BD2	Emmons Quarry (Uncle Tom Mine)	Greenwood	Bryant Pond	H. Donald and Albert Penley, West Paris	Amblygonite, Beryl, Lepidolite, Pol- lucite, Spodumene, Tourmaline (Gem Stock)
CA13	Fisher Quarry	Topsham	Bath	Donald Direnzo, Topsham Feldspar Company, Topsham	Beryl, Columbite, Feldspar, Musco- vite, Quartz, Topaz, Tourmaline
BB6	Fletcher Mine	Buckfield	Buckfield	Howard M. Irish, Buckfield	Beryl
B6	Forks Farm	Lovell	Fryeburg	Henry Forks, Lovell	Beryl, Feldspar, Muscovite
BD15	Foster Hill Prospect	Stoneham	Fryeburg	James Merrill, East Stoneham	Feldspar, Muscovite

PEGMATITE MINES AND PROSPECTS — ALPHABETICAL INDEX — Continued

Map Number	Mine or Prospect	Township	USGS Quadrangle	Contact for Further Information	Minerals Reported
BB19A	Foster Mine (Little Singepole Group)	Paris	Poland	Bell Minerals Company, West Paris	Apatite, Beryl (Gem Stock), Columbite, Feldspar, Garnet, Muscovite, Pollucite, Quartz, Tourmaline (Gem Stock)
A3	Frye Brook—West Branch	Andover—West Surplus	Old Speck	Inquire locally	Beryl
CA8	Garland Mine	Brunswick	Freeport	Walter C. Garland, Woodside Road, Brunswick	Beryl, Feldspar, Muscovite, Quartz
BB8	General Electric Co. Mine (Dudley Mine)	Buckfield	Buckfield	Bill Verrill, South Paris or Harry Keene, Buckfield	Pollucite
BD3	General Electric Glass Quartz Prospect	Albany	Bryant Pond	Town of Albany	Beryl, Columbite, Feldspar, Garnet, Quartz
H1	Getchell Mtn. Prospect	Lakeville	Springfield	Hulbert Snow, R.F.D., Springfield	Biotite, Feldspar, Magnetite, Quartz (Rose)
CA19	Given Mine	Topsham	Bath	Arthur Graves, Topsham	Feldspar
CA20	Given Quarry	Topsham	Bath	Cesare Trusiani, Brunswick	Feldspar, Muscovite, Quartz
AA4	Gogan Prospect	Mexico	Rumford	Maurice Gogan, Rumford	Feldspar, Muscovite
CA1	Grant Quarry	Brunswick	Freeport	Henry L. Grant, Hillside Road, Brunswick	Feldspar, Muscovite, Quartz
CA25	Graves Mine	Topsham	Bath	Arthur Graves, Topsham	Feldspar
CA12	Great Divide Quarry (Undivided Quarry)	Topsham	Bath	Maynard Tarr, Topsham	Feldspar
A1	Harden-Keith- Small Prospect	Twp. E	Rangeley	Maine Mining Bureau, Augusta or Sidney Harden, Rangeley	Columbite, Feldspar (Microcline), Muscovite, Quartz, Spodumene, Tourmaline
C7	Harriman Mine	Bowdoinham	Gardiner	Harriman Construction Co., Bowdoinham	Feldspar, Quartz

PEGMATITE MINES AND PROSPECTS — ALPHABETICAL INDEX — Continued

Map Number	Mine or Prospect	Township	USGS Quadrangle	Contact for Further Information	Minerals Reported
BC8	Harvard Quarry (Noyes Mountain Quarry)	Greenwood	Bryant Pond	William Bryant, Rumford Point, or Stanley I. Perham, West Paris	Apatite, Beryl, Biotite, Feldspar (Cleavelandite, Microcline), Garnet, Lepidolite, Muscovite, Quartz (Crystalline), Spinel, Tourmaline (Black, Green)
BB19B	Haverinen Mine (Little Singepole Group)	Paris	Poland	Bell Minerals Co., West Paris	Apatite, Beryl (Gem Stock), Columbite, Feldspar, Garnet, Muscovite, Pollucite, Quartz, Tourmaline (Gem Stock)
BC5	Hayes Ledge	Greenwood	Bryant Pond	Rolly Hayes, West Paris	Beryl, Muscovite
BC10	Heath Quarry	Greenwood	Bryant Pond	Nestor Taminen, Greenwood	Feldspar
A8	Hedgehog Hill Mine	Peru	Buckfield	Howard M. Irish, Buckfield	Beryl (Gem Stock; Pink, Golden), Biotite, Chrysoberyl, Garnet, Muscovite
BC6	Heikkinen Quarry	Greenwood	Bryant Pond	Stanley I. Perham, West Paris	Beryl, Feldspar, Muscovite, Pyrite Quartz
BB20	Hibbs Quarries	Hebron	Poland	Maine Mica Company, Spruce Pine, N. C.	Beryl, Biotite, Feldspar, Garnet, Muscovite, Quartz, Tourmaline (Black)
BB18	Hill #4 Quarry	Hebron	Poland	John Cummings, Paris	Cassiterite, Feldspar, Tourmaline (Gem Stock)
BD9	Holt Prospect	Albany	Bryant Pond	Chester Holt, Albany	Muscovite
BB14	Hoopers Ledge (Twitchell Mine)	Paris	Bryant Pond	Bell Minerals Co., West Paris	Beryl, Chrysoberyl, Feldspar, Quartz (Rose)
BC3	Immonen Ledge #1	Paris	Bryant Pond	Emil Immonen, West Paris	Beryl, Feldspar, Garnet, Muscovite, Quartz (Rose)
BC1	Immonen Ledge #2	Greenwood	Bryant Pond	H. Donald and Albert Penley, West Paris	Fibrolite
CA23	Ingalls Quarry	Topsham	Bath	William Ingalls, Lake Alfred, Florida	Feldspar (Plagioclase), Muscovite

PEGMATITE MINES AND PROSPECTS — ALPHABETICAL INDEX — Continued

Map Number	Mine or Prospect	Township	USGS Quadrangle	Contact for Further Information	Minerals Reported
BB7	Irish Mine (Westinghouse Mine)	Buckfield	Buckfield	Howard M. Irish, Buckfield	Beryl, Pollucite, Tourmaline (Black, Green)
BD4	Johnson Mine (Guy Johnson Mine)	Albany	Bryant Pond	A. I. Bean, Albany	Beryl, Feldspar, Muscovite, Quartz, Tourmaline (Black)
BA1	Jordan Prospect	Oxford	Poland	William Jordan, Mechanic Falls	Feldspar, Muscovite, Quartz
D3	Kelley Prospect	Baldwin	Sebago Lake	John Kelley, Jr., Hiram	Biotite, Feldspar, Muscovite, Quartz
BA8	Kennedy Mine	Auburn	Poland	B. F. Kennedy, Jr., 99 York Ave., South Portland	Beryl (Aquamarine)
BD11	Knight Mine (Coye or Foye Mine)	Waterford	Fryeburg	Winn Knight, Norway	Beryl, Columbite, Muscovite
CA2	LaChance Mine	Brunswick	Freeport	Jeffrey LaChance, Brunswick	Beryl, Biotite, Columbite, Feldspar, Muscovite, Quartz, Tourmaline (Black)
BA3	LaFlamme Mine	Minot	Poland	Armand LaFlamme, 72 Knox St., Lewiston, or Bell Minerals Company, West Paris	Feldspar, Pollucite, Tourmaline (Black)
CA33	Lang Mine	Bowdoinham	Gardiner	Lucien Direnzo, Topsham	Feldspar
C2	LaPoutre Prospect	Wiscasset	Wiscasset	Paul LaPoutre, Wiscasset	Biotite, Feldspar, Quartz
CA3	Larrabee Quarries (Helie Mine)	Brunswick	Freeport	Albert J. Larrabee, Church Road, Brunswick	Beryl, Biotite, Feldspar, Quartz
AA5	Leach Beryl Prospect	Andover	Rumford	George Crooker, South Andover	Small Beryls reported
AA2	Leach Quartz Prospect	Rumford	Rumford	George Crooker, South Andover	Quartz (Crystals)

PEGMATITE MINES AND PROSPECTS — ALPHABETICAL INDEX — Continued

Map Number	Mine or Prospect	Township	USGS Quadrangle	Contact for Further Information	Minerals Reported
BB19	Little Singepole Quarries Foster Mine Haverinen Mine Mills Quarry Mt. Marie Mine	Paris	Poland	Bell Minerals Company, West Paris	Apatite, Beryl (Gem Stock), Columbite, Feldspar, Garnet, Muscovite, Pollucite, Quartz, Tourmaline (Gem Stock)
A7	Lobikis Mine	Peru	Buckfield	Mrs. John Lobikis, Rumford	Beryl, Muscovite, Pyrrhotite, Quartz, Triphylite, Vivianite
B4	Lord Hill Mine	Stoneham	Fryeburg	Supervisor, White Mountain National Forest; U. S. Bureau of Land Management, Washington, D. C.	Beryllium Minerals, Columbite, Topaz (Gem Stock)
D2	Lord Prospect	Denmark	Kezar Falls	Kenneth Lord, Denmark	Biotite, Feldspar, Muscovite, Quartz
CA14	Mallett Mine	Topsham	Bath	Edward Elliott, Brunswick	Feldspar
BD13	Maxim Prospect	Lovell	Fryeburg	Alton Maxim, South Paris	Feldspar, Muscovite, Quartz
C8	McFee Mine	Bowdoinham	Gardiner	Robert McFee, Bowdoin	Feldspar
CB2	McKay Farm Prospect	Phippsburg	Bath	Charles Beech or Alton Whittier, Brunswick	Beryl, Biotite, Feldspar, Garnet, Muscovite, Quartz, Tourmaline (Black)
BE11	Melrose Prospect	Stoneham	Bethel	Mrs. Enid Melrose, West Stoneham	Bertrandite, Beryl (Aquamarine), Beryllonite
BB19	Mills Quarry (Little Singepole Group)	Paris	Poland	Bell Minerals Co., West Paris	Apatite, Beryl (Gem Stock), Columbite, Feldspar, Garnet, Muscovite, Pollucite, Quartz, Tourmaline (Gem Stock)
CB10	Moffatt Mines	Georgetown	Bath	Elizabeth D. Moffatt, Georgetown	Feldspar, Tourmaline
BA9	Mt. Apatite Mines Androscoggin Tourmaline Company Fisher Greenlaw Hatch Farm Keith (Towne) Maine Feldspar Pulsifer	Auburn	Poland	Consolidated Feldspar Division, International Minerals and Chemical Company, Topsham	Amblygonite, Apatite (Purple), Beryl, Feldspar, Garnet, Lepidolite, Spodumene, Tourmaline

PEGMATITE MINES AND PROSPECTS — ALPHABETICAL INDEX — Continued

Map Number	Mine or Prospect	Township	USGS Quadrangle	Contact for Further Information	Minerals Reported
BB19C	Mt. Marie Mine (Little Singepole Group)	Paris	Poland	Bell Minerals Company, West Paris	Apatite, Beryl (Gem Stock), Columbite, Feldspar, Garnet, Muscovite, Pollucite, Quartz, Tourmaline (Gem Stock)
BB9	Mt. Mica Mines	Paris	Buckfield	Howard M. Irish, Buckfield	Beryl (Gem, Lithia), Cassiterite, Feldspar (Cleavelandite, Microcline), Garnet, Lepidolite, Muscovite, Pollucite, Quartz (Citrine, Rose, Smokey), Tourmaline (Black, Blue, Green, Pink)
CA7	Morse Quarry	Brunswick	Freeport	Charles Morse, Church Road, Brunswick	Feldspar
BC15	Mustonen Ledge	Greenwood	Bryant Pond	Roland Benson, West Paris	Feldspar
AA14	Newry Mines False Mine Lower Mine Nevel Quarry	Newry	Rumford	Whitehall Co., Inc., 17 Battery Place, New York 4, N. Y.	Amblygonite, Apatite, Autunite, Beryl, Beryllonite, Cassiterite, Columbite, Eosporite, Fairfieldite, Feldspar (Cleavelandite), Galea, Garnet, Hatchettolite, Herderite, Lepidolite, Muscovite, Pollucite, Purpurite, Quartz, Siderite, Sphalerite, Spodumene, Tantalite, Torbernite, Tourmaline (Gem Stock, Black), Triphylite, Uraninite, Vivianite
AA15	Newry Gem Mine (Dunton Mine)	Newry	Rumford	Whitehall Co., Inc., 17 Battery Place, New York 4, N. Y.	Amblygonite, Apatite, Autunite, Beryl, Beryllonite, Cassiterite, Chalcedony, Cookeite, Eosporite, Feldspar, Francolite, Herderite, Lepidolite, Microcline, Montebrazite, Muscovite, Opal, Pollucite, Pyrite, Quartz, Reddingite, Siderite, Sphalerite, Spodumene, Torbernite, Tourmaline (Gem Stock), Triphylite, Uraninite, Vivianite, Zircon
F2	Nurse Farm Prospect	Vienna	Farmington	Roger Nurse, Mt. Vernon	Feldspar, Muscovite

PEGMATITE MINES AND PROSPECTS — ALPHABETICAL INDEX — Continued

Map Number	Mine or Prospect	Township	USGS Quadrangle	Contact for Further Information	Minerals Reported
BC16	Ohtonen's Quarry	Greenwood	Bryant Pond	Anti Ohtonen, West Paris	Apatite, Beryllium Minerals, Feldspar, Pyrite
BB4	Orchard Mine	Buckfield	Buckfield	Mrs. Blanche Bennett, Buckfield	Apatite, Beryl (Gem Stock), Cassiterite, Columbite, Feldspar, Quartz (Rose), Spodumene, Topaz, Tourmaline (Gem Stock)
C10	Ordway Mines	Bowdoin	Gardiner	Mrs. Lilly Ordway, Bowdoin	Beryl, Biotite, Feldspar, Garnet, Muscovite, Pyrite, Quartz, Tourmaline (Black)
CB7	Parker Head Area	Phippsburg	Bath	Inquire locally	Beryl, Feldspar, Ilmenite, Magnetite, Muscovite
BE5	Peabody Mtn. Quarry	Batchelders Grant	Bethel	Floyd Mason, West Bethel	Apatite, Feldspar, Muscovite, Quartz, Tourmaline
BE1	Peaked Hill Mine	Gilead	Bethel	Mrs. H. E. Mason, Bethel, or Dr. W. B. Twadale, Bethel	Biotite, Feldspar, Garnet, Muscovite, Quartz
BE2	Peaked Hill Prospect	Gilead	Bethel	Mrs. H. E. Mason, Bethel, or Dr. W. B. Twadale, Bethel	Beryl (Gem Stock)
BC2	Perham Mine	Paris	Bryant Pond	Bell Minerals Company, West Paris	Apatite, Beryl (Aquamarine), Biotite, Feldspar, Garnet, Muscovite, Pyrite, Quartz, Tourmaline
CB9	Perry Mine	Phippsburg	Bath	Richard Hatch, Cundy's Harbor	Feldspar
A6	Perry Prospect	Peru	Dixfield	Arthur Lemay, West Peru	Autunite, Petalite, Spodumene, Triphylite
BA4	Phillips Mine	Minot	Poland	Bell Minerals Company, West Paris	Autunite, Feldspar, Quartz (Amethyst), Tourmaline (Black)
BE7	Pingree Prospect	Albany	Bethel	C. P. Pingree, Albany	Beryl, Columbite, Feldspar
BA7	Pitts Mine	Minot	Poland	Fred Pitts, Minot	Feldspar, Muscovite, Quartz
BA6	Pitts-Tenney Mine	Minot	Poland	Fred Pitts, Minot	Beryl, Diopside, Feldspar, Garnet (Grossularite)

PEGMATITE MINES AND PROSPECTS — ALPHABETICAL INDEX — Continued

Map Number	Mine or Prospect	Township	USGS Quadrangle	Contact for Further Information	Minerals Reported
AA17	Plumbago Mtn. Area	Newry	Rumford	International Paper Company, Livermore Falls, or Whitehall Company, Inc., 17 Battery Place, New York 4, N. Y.	Beryl, Spodumene
C3	Poole Prospect	Edgecomb	Boothbay	Samuel J. Blaugrund, 52 Martin Building, Utica, New York	Feldspar, Muscovite, Quartz
CA27	Powers Mountain Prospect	Topsham	Bath	Donald Direnzo, Topsham Feldspar Company, Topsham	Biotite, Feldspar, Quartz
CA9	Purington Quarry	Topsham	Bath	Donald Direnzo, Topsham Feldspar Company, Topsham	Biotite, Feldspar, Quartz
A5	Puzzle Mountain Area	Newry	Old Speck	Inquire locally	Beryl reported
B1	Ragged Jack Mtn. Area	Hartford	Buckfield	Wesley Poland, Woodstock, or Clarence Lefoy, East Sumner	Chrysoberyl
BE13	Rattlesnake Mtn. Area	Albany	Bethel	Inquire locally	Beryl
AA11	Red Hill Mine	Rumford	Rumford	Whitehall Co., Inc., 17 Battery Place, New York 4, N. Y.	Beryl, Feldspar, Triphylite
CB8	Robbins Mine	Phippsburg	Bath	Mel Robbins, Brunswick	Beryl, Columbite, Feldspar, Magnetite
CB12	Rogers Mine	Phippsburg	Bath	Dorothy Rogers, Winnegance	Beryl (Gem Stock), Feldspar, Tourmaline, (Black)
AA12	Roy Mines (Goddard Ledge)	Rumford	Rumford	G. R. Alouisy, Coral Gables, Weymouth, Mass., or R. E. Roy, North Rumford	Beryl, Corundum, Feldspar, Pyrrhotite, Sphalerite
BB21	Rubellite Mine (Cushman Mine)	Hebron	Poland	Dwight Cushman, Hebron	Beryl, Pollucite, Tourmaline (Gem Stock)
CA24	Rumrill Quarry	Topsham	Bath	Lucien Direnzo, Topsham	Beryl, Feldspar, Muscovite, Quartz
CA4	Russell Brothers Mine	Topsham	Bath	A. R. Russell, Topsham	Beryl, Biotite, Feldspar, Garnet, Muscovite, Quartz, Tourmaline (Black)

PEGMATITE MINES AND PROSPECTS — ALPHABETICAL INDEX — Continued

Map Number	Mine or Prospect	Township	USGS Quadrangle	Contact for Further Information	Minerals Reported
BB2	Ryerson Hill Mine	Paris	Buckfield	Jacob Immonen, West Paris	Beryl (Gem Stock), Columbite, Feldspar
BD12	Saunders Mine	Waterford	Fryeburg	C. P. Saunders, Waterford	Chalcopyrite, Feldspar, Garnet, Magnetite, Muscovite, Pyrrhotite, Quartz, Tourmaline (Black)
BB11	Scott Colby Mine	Paris	Buckfield	Eino Pulkinnen, South Paris	Feldspar, Quartz (Rose)
AA16	Scotty Mine	Newry	Rumford	International Paper Co. Mineral rights: Whitehall Co., Inc., 17 Battery Place, New York 4, N. Y.	Beryl, Feldspar, Muscovite, Quartz, Spodumene
BD6	Scribner Mine	Albany	Bryant Pond	Fred Scribner, Bryant Pond	Apatite, Beryl, Biotite, Feldspar, Garnet, Muscovite, Quartz (Rose), Tourmaline (Black)
BB12	Slattery Mine	Paris	Buckfield	Roscoe Slattery, Paris, or Stanley I. Perham, West Paris	Bertrandite, Beryl (Gem Stock), Feldspar, Quartz (Rose)
B8	South Waterford Prospect (Bear Mountain Prospect)	Waterford	Norway	Dr. R. E. Hubbard, South Waterford	Muscovite
A2	Spruce Mtn. Area	Andover North	Old Speck	Inquire locally	Massive Beryl reported
CA5	Standpipe Hill Quarry	Topsham	Bath	Inquire locally	Feldspar, Monazite
CA15	Alice Staples Quarry	Topsham	Bath	Mrs. Alice Staples, Brunswick	Beryl, Columbite, Feldspar
CA18	William Staples Quarry	Topsham	Bath	Russell Garland, Topsham	Feldspar
E2	Starrett Mine	Warren	Waldoboro	Hollis G. Starrett, Warren	Feldspar (Microcline), Muscovite, Quartz, Spodumene

PEGMATITE MINES AND PROSPECTS — ALPHABETICAL INDEX — Continued

Map Number	Mine or Prospect	Township	USGS Quadrangle	Contact for Further Information	Minerals Reported
E1	Starrett Prospect	Warren	Waldoboro	Hollis G. Starrett, Warren	Feldspar, Quartz, Spodumene
E3	State Prison Farm Prospect	Cushing and Warren	Rockland	Maine Mining Bureau, Augusta, or Dow Chemical Company, Midland, Michigan	Feldspar (Albite), Quartz, Spodumene
BD5	Stearns Prospect (Hornet Mine)	Albany	Bryant Pond	Hugh Stearns, Albany	Beryl, Feldspar, Muscovite, Quartz
BB25	Stearns Farm Mine	Paris	Buckfield	Austin Stearns, Paris Hill	Quartz (Rose, fused for optical uses)
B7	Stearns Hill Mine	Waterford	Fryeburg	Burton Newton, Bethel	Feldspar
BB15	Stony Brook Mine	Paris	Buckfield	Howard M. Irish, Buckfield	Feldspar, Lepidolite, Muscovite, Quartz, Tourmaline (Damourite)
BB17	Streaked Mtn. Prospect	Hebron	Poland	Inquire locally	Feldspar
BB23	Sturtevant Mine (Sanitarium Mine)	Hebron	Poland	Inquire locally	Beryl
BA2	Sturtevant Mine	Minot	Poland	Norman Sturtevant, West Minot, or Bell Minerals Company, West Paris	Feldspar, Tourmaline (Black)
B2	Styles Mtn. Prospect	Stoneham	Fryeburg	W. Phillips Cole, Hollis Center	Beryl
BC7	Tamminen (Old) Mine	Greenwood	Bryant Pond	Nestor Tamminen, West Paris, or Bell Minerals Company, West Paris	Beryl, Idocrase, Quartz (Rose)
BC9	Tamminen Quarry	Greenwood	Bryant Pond	Bell Minerals Company, West Paris	Beryl, Feldspar (Albite), Pollucite, Quartz (Crystal), Spodumene, Topaz, Uraninite
BC11	Tamminen-Waisanen Mine	Greenwood	Bryant Pond	Stanley I. Perham, West Paris	Apatite, Bertrandite, Feldspar, Hercynite, Spodumene

PEGMATITE MINES AND PROSPECTS — ALPHABETICAL INDEX — Continued

Map Number	Mine or Prospect	Township	USGS Quadrangle	Contact for Further Information	Minerals Reported
CB5	Thomas Quarry	Phippsburg	Bath	Atkins Bay Farm, Phippsburg	Apatite, Beryl (Gem Stock), Feldspar, Muscovite, Tourmaline
CB6	Thorne Prospect	Georgetown	Bath	Bruce Thorne, 93 Baystate Road, Melrose, Mass.	Biotite, Feldspar, Muscovite, Quartz, Tourmaline (Black)
BD1	Tiger Bill Mine	Greenwood	Bryant Pond	H. Donald Penley and Albert Penley, West Paris	Autunite, Bertrandite, Feldspar, Herderite, Spodumene
CB11	Todd Mine	Georgetown	Bath	Will Todd, Georgetown	Beryl, Feldspar
CA22	Trenton Mine	Topsham	Bath	Donald Drenzo, Topsham Feldspar Company, Topsham	Feldspar, Muscovite, Quartz
C5	Trott Cove Mine	Woolwich	Bath	Sam Guptill, Woolwich	Apatite (Green), Beryl, Feldspar, Garnet, Muscovite, Quartz, Tourmaline (Black)
CA34	Trufant Prospect	Bowdoin	Gardiner	Inquire locally, or at U. S. Gypsum Co., Lisbon Falls	Beryl, Biotite, Feldspar, Garnet, Muscovite, Quartz
C1	Tryon Mountain Quarries	Pownal	Freeport	Philip Tryon, Pownal, or Consolidated Feldspar Division, International Minerals and Chemical Company, Topsham	Biotite, Feldspar, Muscovite
BC17	Tubbs Ledge	Norway	Norway	Andrew Eastman, Norway	Cassiterite, Lepidolite, Quartz (Rose), Tourmaline (Green), Triphylite
BB14	Twitchell Mine (Hooper's Ledge)	Paris	Bryant Pond	Bell Minerals Company, West Paris	Beryl, Chrysoberyl, Feldspar, Quartz (Rose)
BD2	Uncle Tom Mine (Emmons Quarry)	Greenwood	Bryant Pond	H. Donald and Albert Penley, West Paris	Amblygonite, Beryl, Lepidolite, Polylucite, Spodumene, Tourmaline (Gem Stock)

PEGMATITE MINES AND PROSPECTS — ALPHABETICAL INDEX — Concluded

Map Number	Mine or Prospect	Township	USGS Quadrangle	Contact for Further Information	Minerals Reported
F1	Vienna Mtn. Prospect	Vienna	Farmington	Inquire locally	Feldspar
BC12	Waisanen Mine (The Nubble)	Greenwood	Bryant Pond	Stanley I. Perham, West Paris	Beryl, Feldspar, Muscovite
BD8	Wardwell Mine	Albany	Bryant Pond	Roy Wardwell, Albany	Beryl, Biotite, Feldspar, Muscovite, Quartz (Rose)
B10	Warren Quarry (Howe Mine)	Denmark	Fryeburg	Warren Lumber Co., Denmark	Amethyst
BE12	Willis Warren Quarry	Stoneham	Bethel	Willis Warren, Stoneham, or Stanley I. Perham, West Paris	Apatite, Beryl, Feldspar, Garnet, Muscovite, Tourmaline
BD7	Wentworth Mine	Albany	Bryant Pond	Ernest Wentworth, Albany	Apatite, Beryl, Feldspar, Muscovite, Quartz, Pyrite
BE3	Wheeler Mines	Gilead	Bethel	Roger and Chester Wheeler, Bethel	Beryl, Feldspar (Cleavelandite), Muscovite
BB13	Whispering Pines Mine	Paris	Bryant Pond	Bell Minerals Company, West Paris	Feldspar, Quartz (Rose)
AA8	Whitecap Mtn. Area	Rumford	Rumford	Thomas Dickson, Mexico	Apatite, Beryl, Feldspar, Garnet, Muscovite, Quartz, Tourmaline
AA9	Whitehall Prospect	Rumford	Rumford	Whitehall Co., Inc., 17 Battery Place, New York 4, N. Y.	Beryl
CA16	William Willes Quarry	Topsham	Bath	Harriet Fisher, Brunswick	Beryl, Columbite, Feldspar
C4	Williams Mine	Edgecomb	Boothbay	Frank Williams, Edgecomb	Feldspar, Muscovite, Quartz

EXTRA SPACE FOR ADDITIONAL PROPERTIES OR DISCOVERIES OF INTEREST

Map Number	Mine or Prospect	Township	USGS Quadrangle	Contact for Further Information	Minerals Reported

PEGMATITE MINES AND PROSPECTS LISTED BY COUNTY AND TOWNSHIP

ANDROSCOGGIN

Auburn
 Kennedy Mine
 Mt. Apatite Mines
 Androscoggin Tourmaline
 Company
 Fisher
 Greenlaw
 Hatch Farm
 Keith (Towne)
 Maine Feldspar Company
 Pulsifer
 Minot
 Bell Prospect
 (Giddings Prospect)
 LaFlamme Mine
 Phillips Mine
 Pitts Mine
 Pitts-Tenney Mine
 Sturtevant Mine
 Poland
 Berry Quarry

CUMBERLAND

Baldwin
 Kelley Prospect
 Brunswick
 Garland Mine
 Grant Quarry
 LaChance Mine
 Larrabee Quarries
 Morse Quarry
 Casco
 Chute Prospect
 Pownal
 Tryon Mountain Quarries

FRANKLIN

Township E
 Harden-Keith-Small Prospect

KENNEBEC

Vienna
 Nurse Farm Prospect
 Vienna Mtn. Prospect

KNOX

Warren
 Starratt Mine
 Starratt Prospect
 Warren-Cushing
 State Prison Farm Prospect

LINCOLN

Edgecomb
 Poole Prospect
 Williams Mine
 Waldoboro
 Benner Prospect
 Wiscasset
 LaPoutre Prospect

OXFORD

Albany
 Bumpus Quarry
 Donahue Prospect
 General Electric Glass Quartz
 Prospect
 Holt Prospect
 Johnson Mine
 (Guy Johnson Mine)
 Pingree Prospect
 Rattlesnake Mtn. Area
 Scribner Mine
 Stearns Prospect
 (Hornet Mine)
 Wardwell Mine
 Wentworth Mine
 Andover
 Leach Beryl Prospect
 Andover North
 Spruce Mountain Area
 Andover West
 Baldpate Mountain Area
 Frye Brook—West Branch
 Batchelders Grant
 Peabody Mountain Quarry
 Buckfield
 Bennett Quarry

Bessey Mine
 Cummings Mine
 Dudley Prospect
 (Neville Prospect—
 Owls Head)
 Fletcher Mine
 General Electric Company
 Mine (Dudley Mine)
 Irish Mine
 (Westinghouse Mine)
 Orchard Mine
 Canton
 Clark Mine
 (Wentworth Mica Mine)

Denmark

Lord Prospect
 Warren Quarry
 (Howe Mine)

Gilead

Peaked Hill Mine
 Peaked Hill Prospect
 Wheeler Mines

Greenwood

Diamond Ledge
 (Yale or Yates Quarry)
 Harvard Quarry
 (Noyes Mountain Quarry)
 Hayes Ledge
 Heath Quarry
 Heikkinen Quarry
 Immonen Ledge #2
 Mustonen Ledge
 Ohtonen's Quarry
 Tamminen (Old) Mine
 Tamminen Quarry
 Tamminen-Waisanen Mine
 Tiger Bill Mine
 Uncle Tom Mine
 (Emmons Quarry)
 Waisanen Mine
 (The Nubble)

Hartford

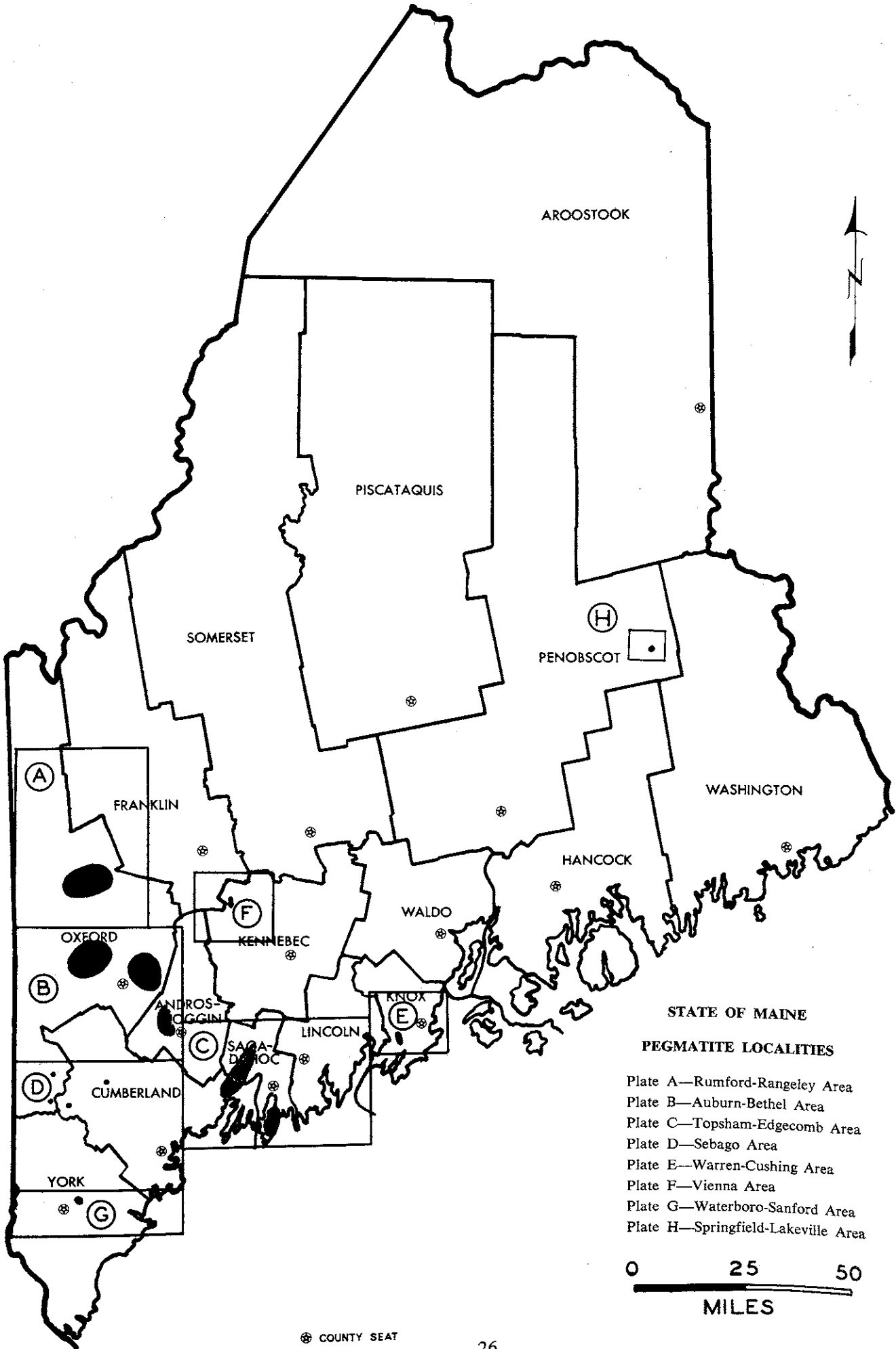
Ragged Jack Mountain Area

Hebron

Barrett Prospect
 Conant Mine
 Hibbs Quarries

PEGMATITE MINES AND PROSPECTS LISTED BY COUNTY AND TOWNSHIP
(Concluded)

Given Mine
Given Quarry
Graves Mine
Great Divide Quarry
(Undivided Quarry)
Ingalls Quarry
Mallett Mine
Powers Mountain Prospect
Purinton Quarry
Rumrill Quarry
Russell Brothers Mine
Standpipe Hill Quarry
Alice Staples Quarry
William Staples Quarry
Trenton Mine
William Willes Quarry
West Bath
Davis Mine
Woolwich
Trott Cove Mine
YORK
Lyman
Brock Prospect
Waterboro
Caton Prospect



STATE OF MAINE

PEGMATITE LOCALITIES

- Plate A—Rumford-Rangeley Area
- Plate B—Auburn-Bethel Area
- Plate C—Topsham-Edgecomb Area
- Plate D—Sebago Area
- Plate E—Warren-Cushing Area
- Plate F—Vienna Area
- Plate G—Waterboro-Sanford Area
- Plate H—Springfield-Lakeville Area



⊗ COUNTY SEAT

PEGMATITE MINES AND PROSPECTS — MAP INDEX

Plate A — Rumford-Rangeley Area

- A1 Harden-Keith-Small Prospect
- A2 Spruce Mountain Area
- A3 Frye Brook - West Branch
- A4 Baldpate Mountain Area
- A5 Puzzle Mountain Area
- A6 Perry Prospect
- A7 Lobikis Mine
- A8 Hedgehog Hill Mine

Plate AA — Rumford Area

- AA1 Binford Prospect
- AA2 Leach Quartz Prospect
- AA3 Belliveau Prospect
- AA4 Gogan Prospect
- AA5 Leach Beryl Prospect
- AA6 Black Mountain Quarries
- AA7 Brown-Thurston Prospect
- AA8 Whitecap Mountain Area
- AA9 Whitehall Prospect
- AA10 Carver Prospect
- AA11 Red Hill Mine
- AA12 Roy Mines
- AA13 Elliot Mine
- AA14 Newry Mines
- AA15 Dunton Mine
- AA16 Scotty Mine
- AA17 Plumbago Mountain Area

Plate B — Auburn-West Paris-Bethel Area

- B1 Ragged Jack Mountain Area
- B2 Styles Mountain Prospect
- B3 Deer Hill Area
- B4 Lord Hill Mine
- B5 Colton Hill Prospect
- B6 Forks Farm
- B7 Stearns Hill Mine
- B8 South Waterford Prospect
- B9 Andrews Ledge
- B10 Warren Quarry

Plate BA — Auburn-Mt. Apatite Area

- BA1 Jordan Prospect
- BA2 Sturtevant Mine
- BA3 LaFlamme Mine
- BA4 Phillips Mine
- BA5 Bell Prospect
- BA6 Pitts-Tenney Mine
- BA7 Pitts Mine
- BA8 Kennedy Mine

- BA9 Mt. Apatite Mines
- BA10 Berry Quarry

Plate BB — Paris-Buckfield Area

- BB1 Bessey Mine
- BB2 Ryerson Hill Mine
- BB3 Cummings Mine
- BB4 Orchard Mine
- BB5 Bennett Quarry
- BB6 Fletcher Mine
- BB7 Irish Mine
- BB8 General Electric Company Mine
- BB9 Mt. Mica Mines
- BB10 Bowker Mine
- BB11 Scott Colby Mine
- BB12 Slattery Mine
- BB13 Whispering Pines Mine
- BB14 Hoopers Ledge
- BB15 Stony Brook Mine
- BB16 Barrett Prospect
- BB17 Streaked Mountain Mines
- BB18 Hill #4 Quarry
- BB19 a. Foster Mine
b. Haverinen Mine
c. Mt. Marie Mine
- BB20 Hibbs Quarries
- BB21 Rubellite Mine
- BB22 Conant Mine
- BB23 Sturtevant Mine
- BB24 Dudley Prospect
- BB25 Stearns Farm Mine

Plate BC — West Paris Area

- BC1 Immonen Ledge #2
- BC2 Perham Mine
- BC3 Immonen Ledge #1
- BC4 Diamond Ledge
- BC5 Hayes Ledge
- BC6 Heikkinen Quarry
- BC7 Tamminen (Old) Mine
- BC8 Harvard Quarry
- BC9 Tamminen Quarry
- BC10 Heath Quarry
- BC11 Tamminen-Waisanen Mine
- BC12 Waisanen Mine
- BC13 BB #1 Quarry
- BC14 Dunn Mine
- BC15 Mustonen Ledge
- BC16 Ohtonen's Quarry
- BC17 Tubbs Ledge

PEGMATITE MINES AND PROSPECTS — MAP INDEX (Continued)

Plate BD — Albany-Waterford Area

BD1 Tiger Bill Mine
BD2 Uncle Tom Mine
BD3 General Electric Glass Quartz Prospect
BD4 Johnson Mine
BD5 Stearns Prospect
BD6 Scribner Mine
BD7 Wentworth Prospect
BD8 Wardwell Mine
BD9 Holt Prospect
BD10 Bumpus Quarry
BD11 Knight Mine
BD12 Saunders Mine
BD13 Maxim Prospect
BD14 Beech Hill Mine
BD15 Foster Hill Prospect

Plate BE — Bethel-Stoneham Area

BE1 Peaked Hill Mine
BE2 Peaked Hill Prospect
BE3 Wheeler Mines
BE4 Anderson Mine
BE5 Peabody Mountain Quarry
BE6 Donahue Prospect
BE7 Pingree Prospect
BE8 Butters Mountain Area
BE9 Durgin Mountain Area
BE10 Aldrich Prospect
BE11 Melrose Prospect
BE12 Willis Warren Quarry
BE13 Rattlesnake Mountain Area

Plate C — Topsham-Edgecomb Area

C1 Tryon Mountain Quarries
C2 LaPoutre Prospect
C3 Poole Prospect
C4 Williams Mine
C5 Trott Cove Mine
C6 Cunningham Mine
C7 Harriman Mine
C8 McFee Mine
C9 Coombs Quarry
C10 Ordway Mines

Plate CA — Topsham Area

CA1 Grant Quarry
CA2 LaChance Mine
CA3 Larrabee Quarries
CA4 Russell Brothers Mine

CA5 Standpipe Hill Quarry
CA6 Dizenzo Prospect
CA7 Morse Quarry
CA8 Garland Mine
CA9 Purington Quarry
CA10 Consolidated Quarry #1
CA11 Consolidated Quarry #2
CA12 Great Divide Quarry
CA13 Fisher Quarry
CA14 Mallett Mine
CA15 Alice Staples Quarry
CA16 William Willes Quarry
CA17 Consolidated Quarry
CA18 William Staples Quarry
CA19 Given Mine
CA20 Given Quarry
CA21 Chapman Mine
CA22 Trenton Mine
CA23 Ingalls Quarry
CA24 Rumrill Quarry
CA25 Graves Mine
CA26 Consolidated Quarry
CA27 Powers Mountain Prospect
CA28 Dunn Prospect
CA29 Consolidated Quarry
CA30 Adderton Quarry
CA31 Booker Prospect
CA32 Consolidated Quarries
CA33 Lang Mine
CA34 Trufant Prospect

Plate CB — Phippsburg-Georgetown Area

CB1 Davis Mine
CB2 McKay Farm Prospect
CB3 Basin Quarry
CB4 Consolidated Quarry
CB5 Thomas Quarry
CB6 Thorne Prospect
CB7 Parker Head Area
CB8 Robbins Mine
CB9 Perry Mine
CB10 Moffatt Mines
CB11 Todd Mine
CB12 Rogers Mine

Plate D — Sebago Lake Area

D1 Cutler Mountain Area
D2 Lord Prospect
D3 Kelley Prospect
D4 Chute Prospect

PEGMATITE MINES AND PROSPECTS — MAP INDEX (Concluded)

Plate E — Warren-Cushing Area

E1 Starrett Prospect
E2 Starrett Mine
E3 State Prison Farm Prospect
E4 Benner Prospect

Plate F — Vienna Area

F1 Vienna Mountain Prospect
F2 Nurse Farm Prospect

Plate G — Waterboro Area

G1 Caton Prospect
G2 Brock Prospect

Plate H — Springfield-Lakeville Area

H1 Getchell Mountain Prospect



Plate A — Rumford-Rangeley Area



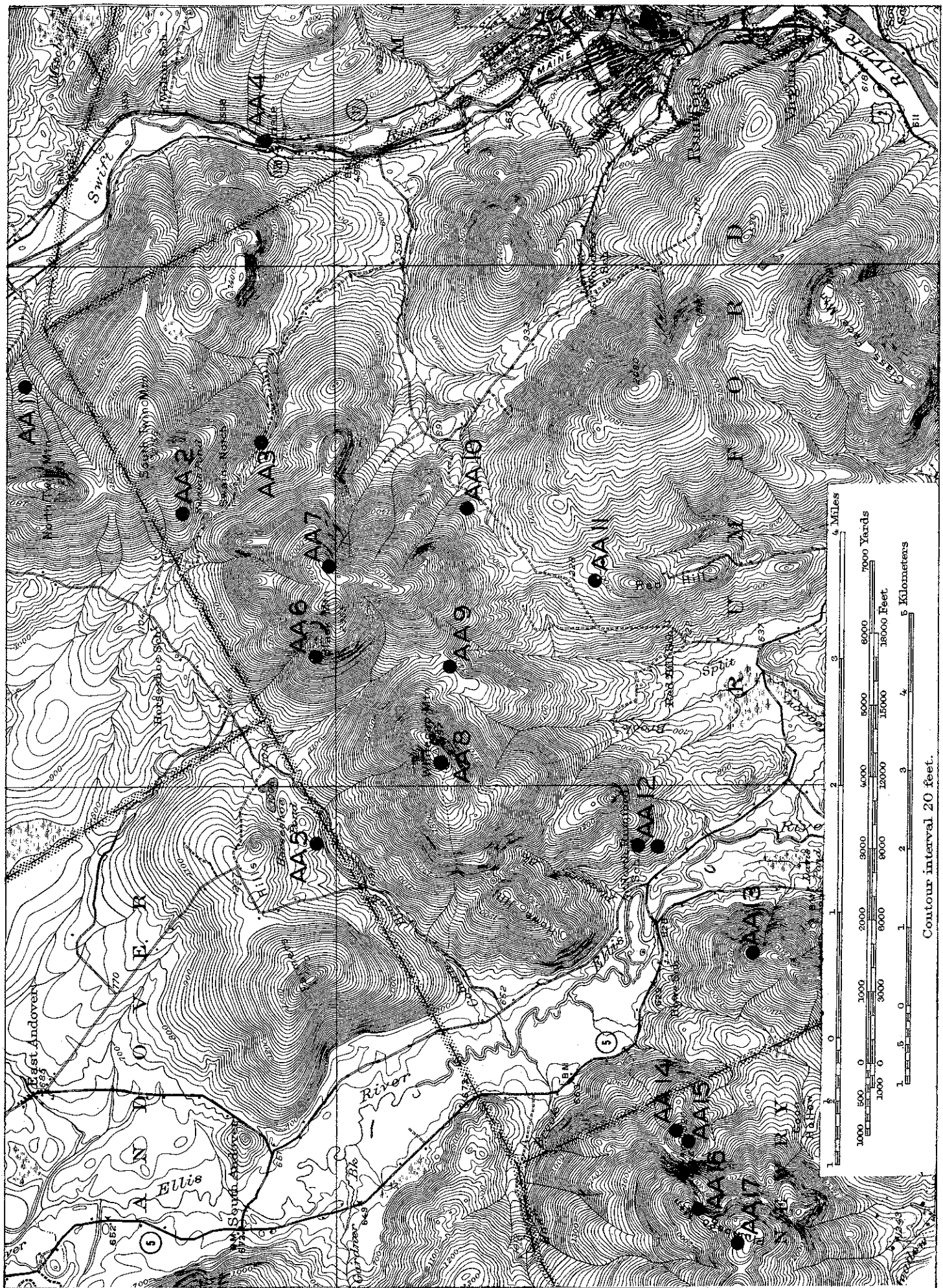
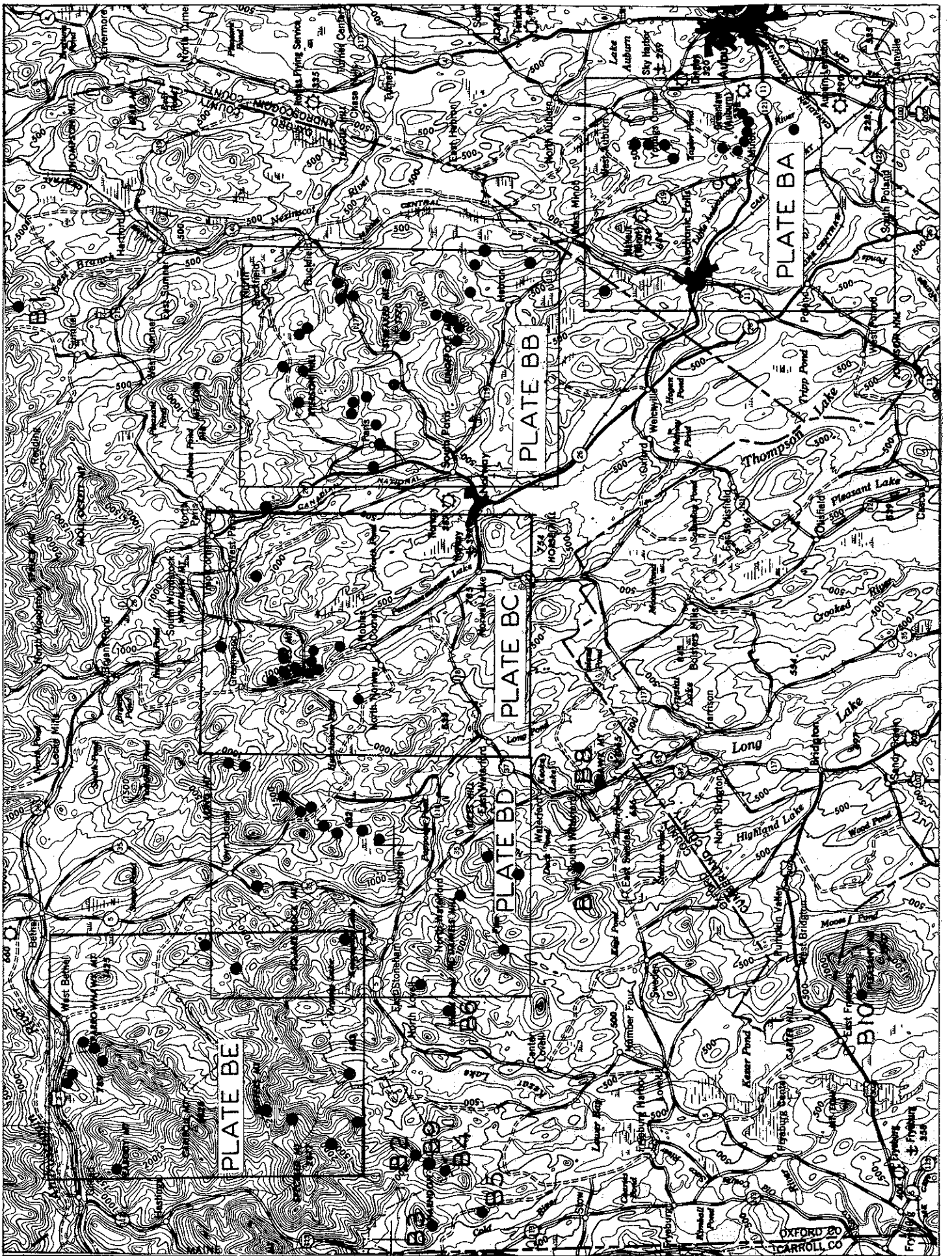


Plate AA — Rumford-Newry Area



10 MILES

5

0

Plate B — Auburn-Bethel Area

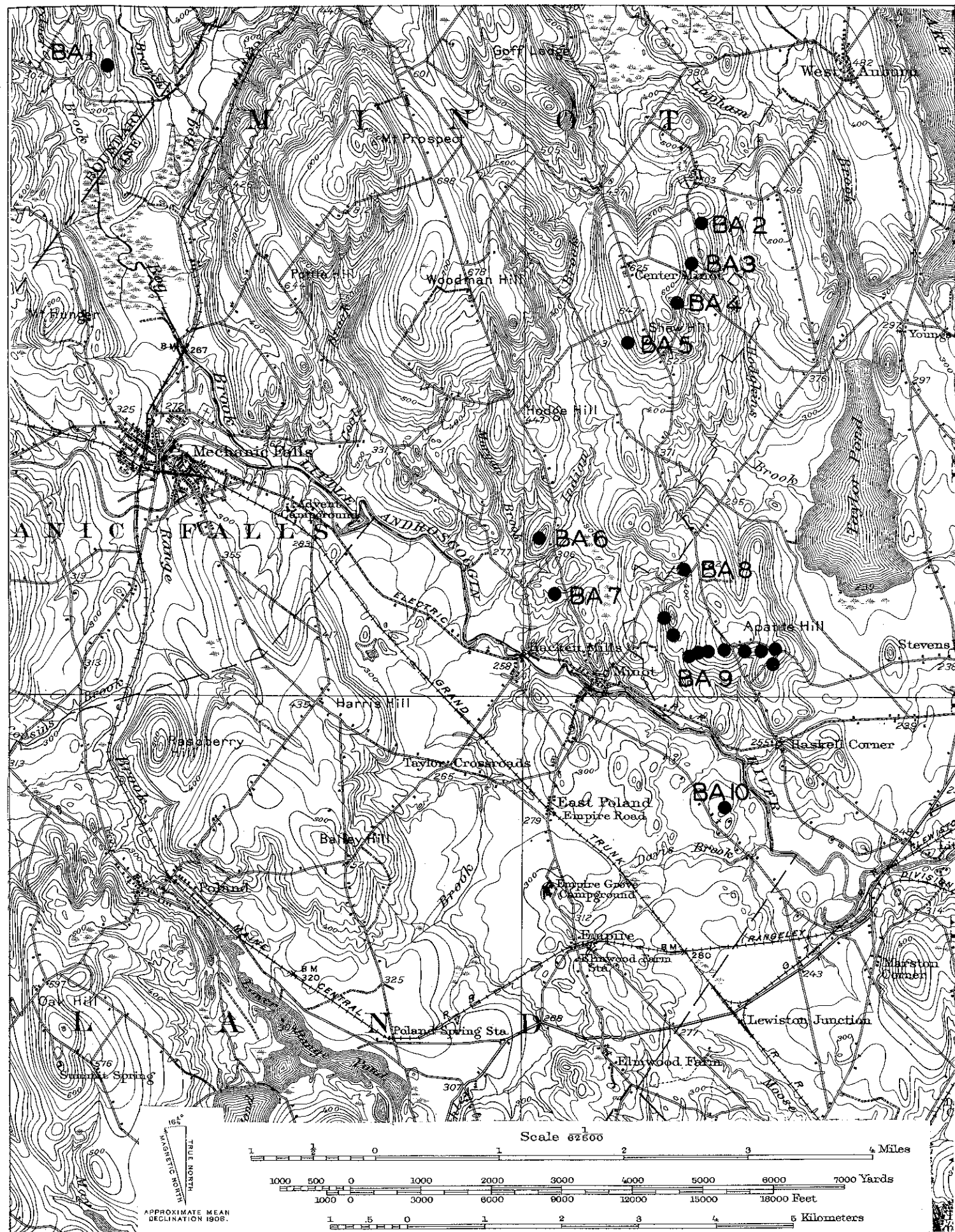
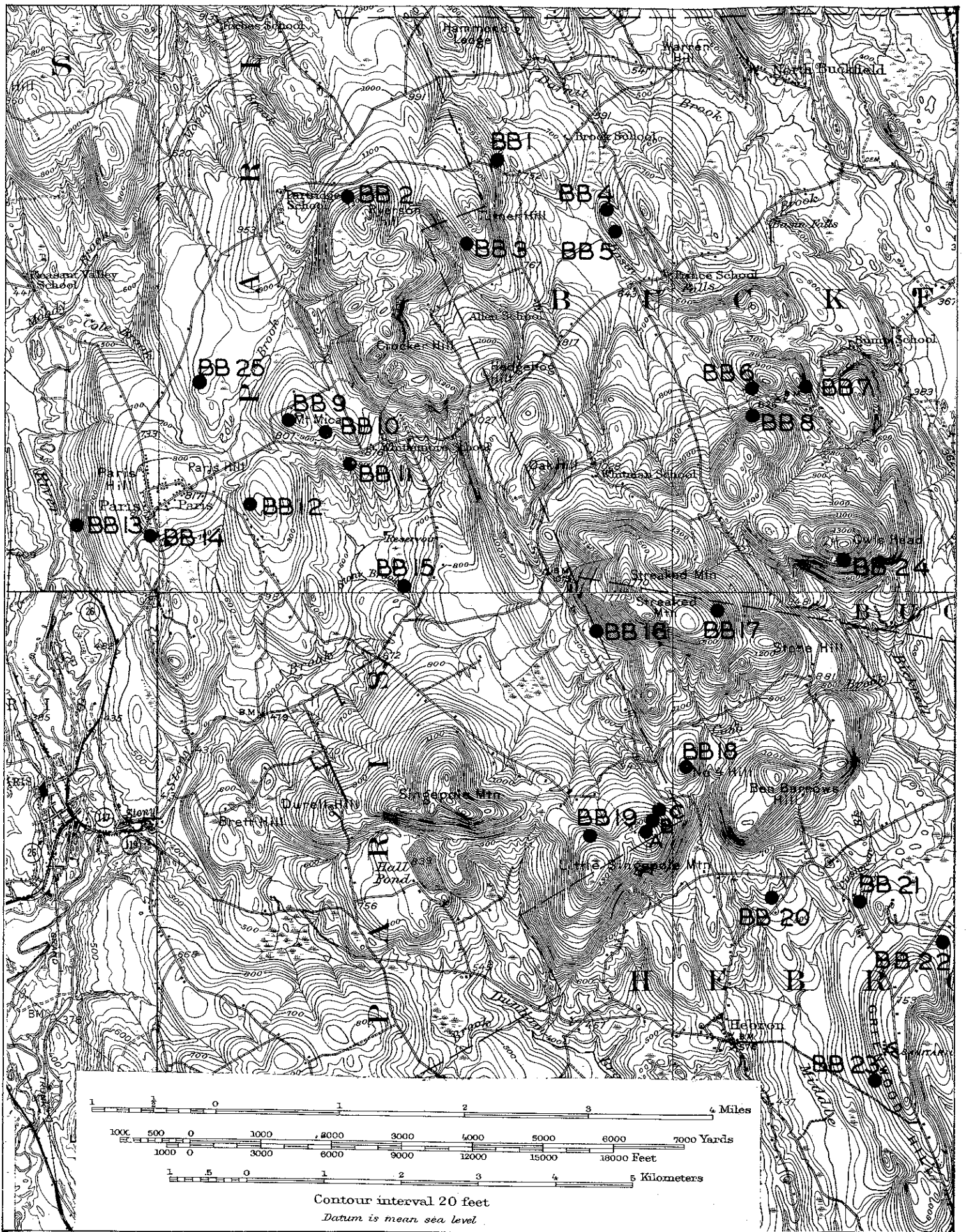


Plate BA — Auburn-Mechanic Falls Area



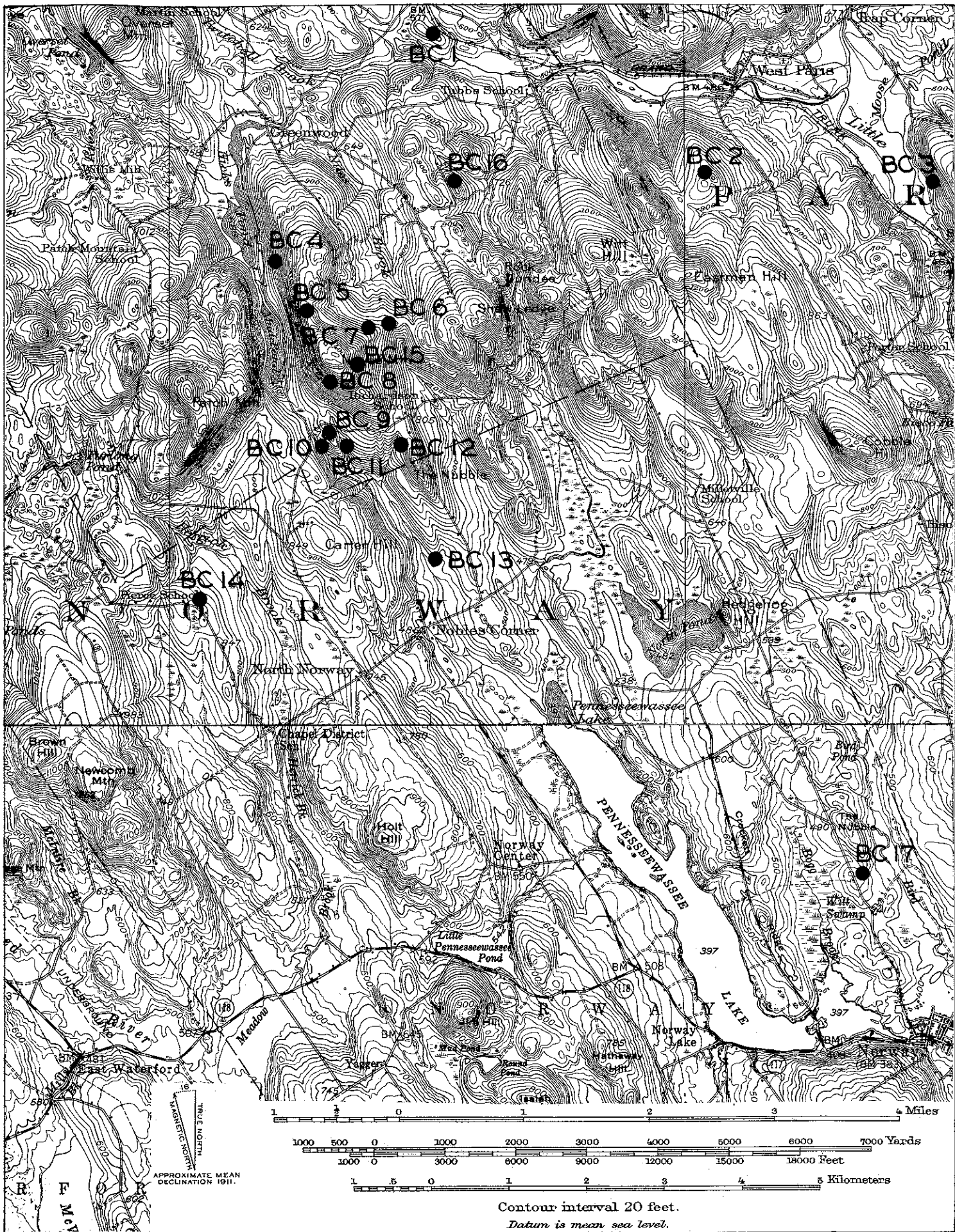


Plate BC — West Paris-Greenwood Area

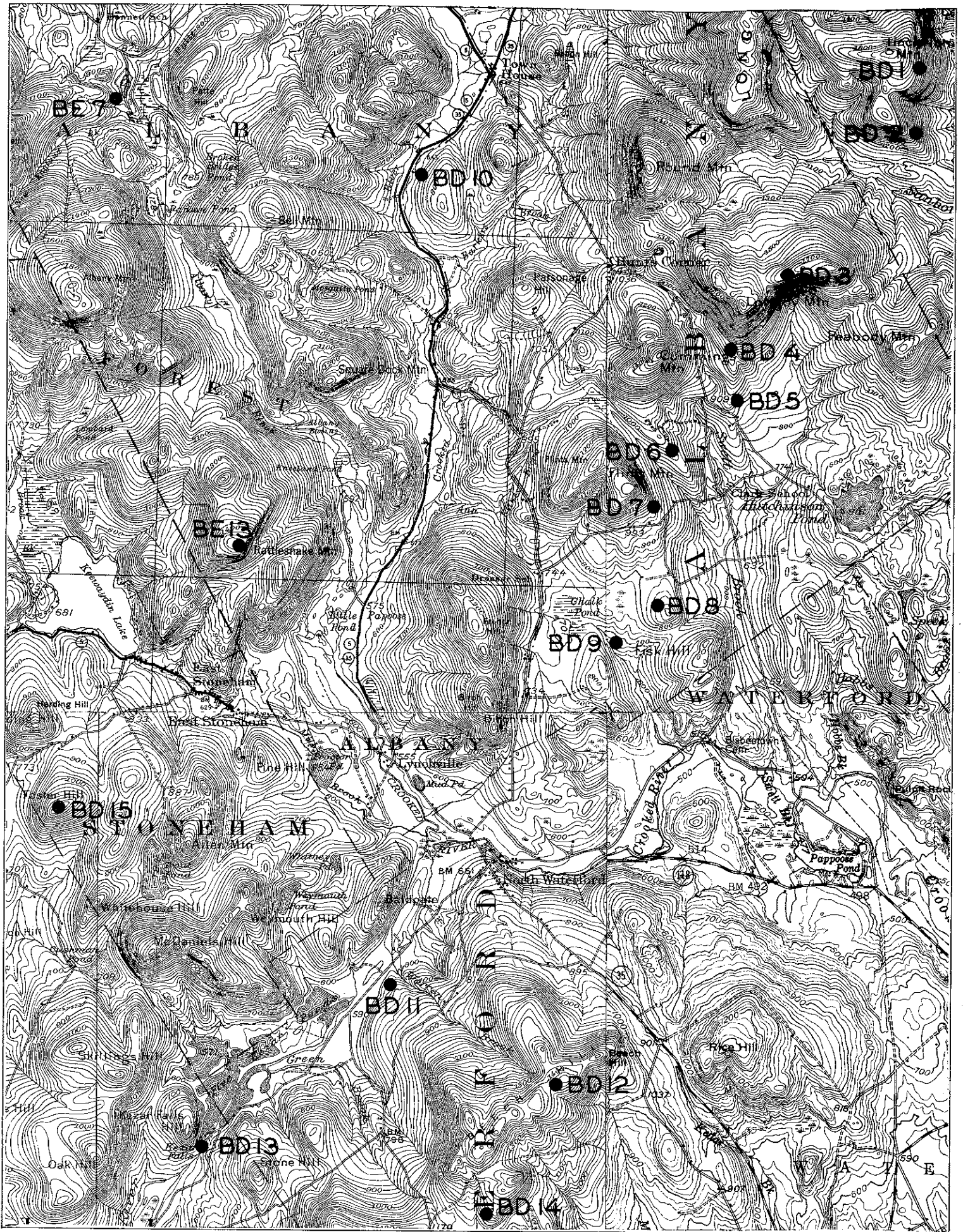


Plate BD — Albany-Waterford Area

0 1 2 3 MILES

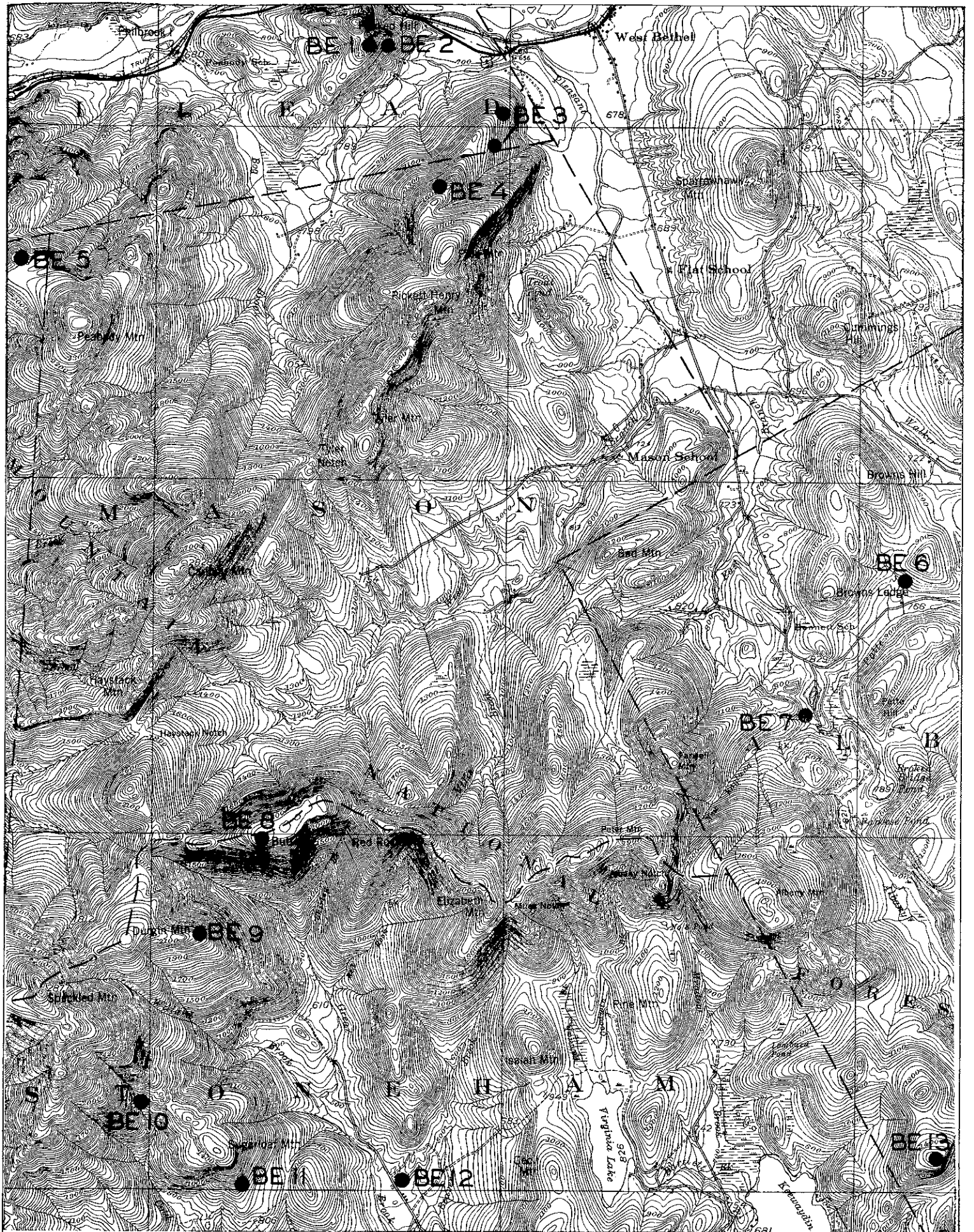
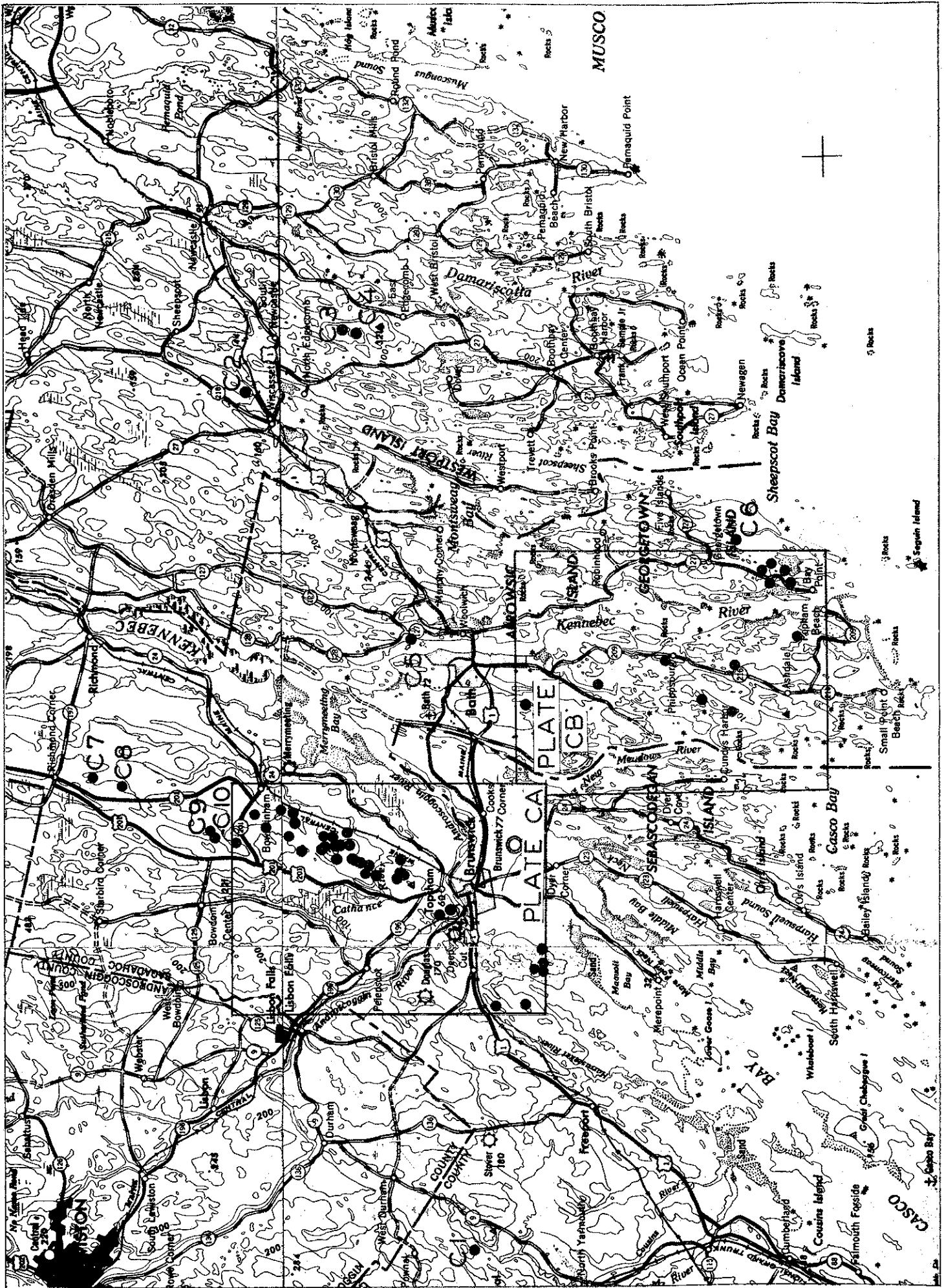


Plate BE — Bethel-Stoneham Area





0 5 10 MILES

Plate C — Topsham-Edgecomb Area

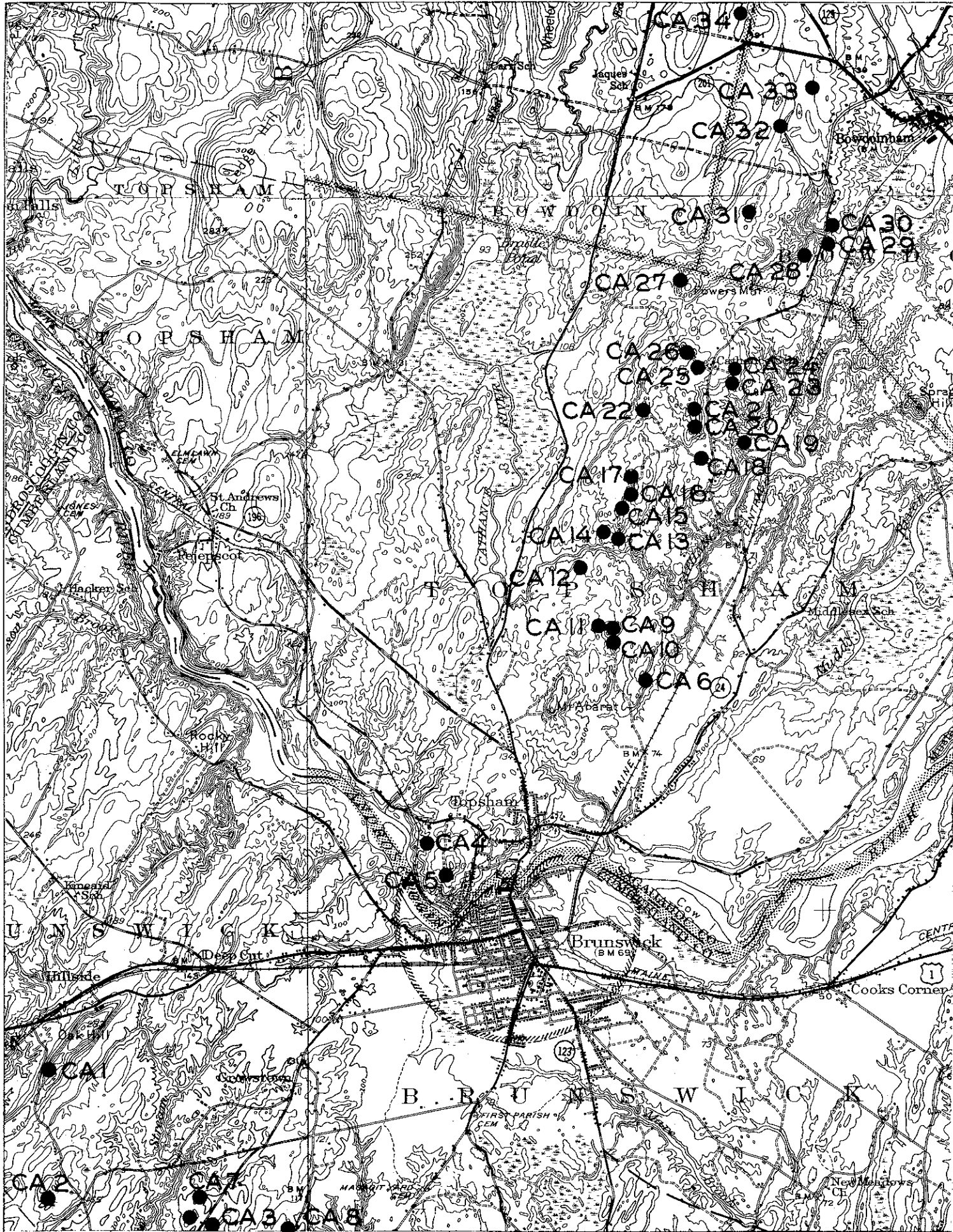


Plate CA — Topsham Area



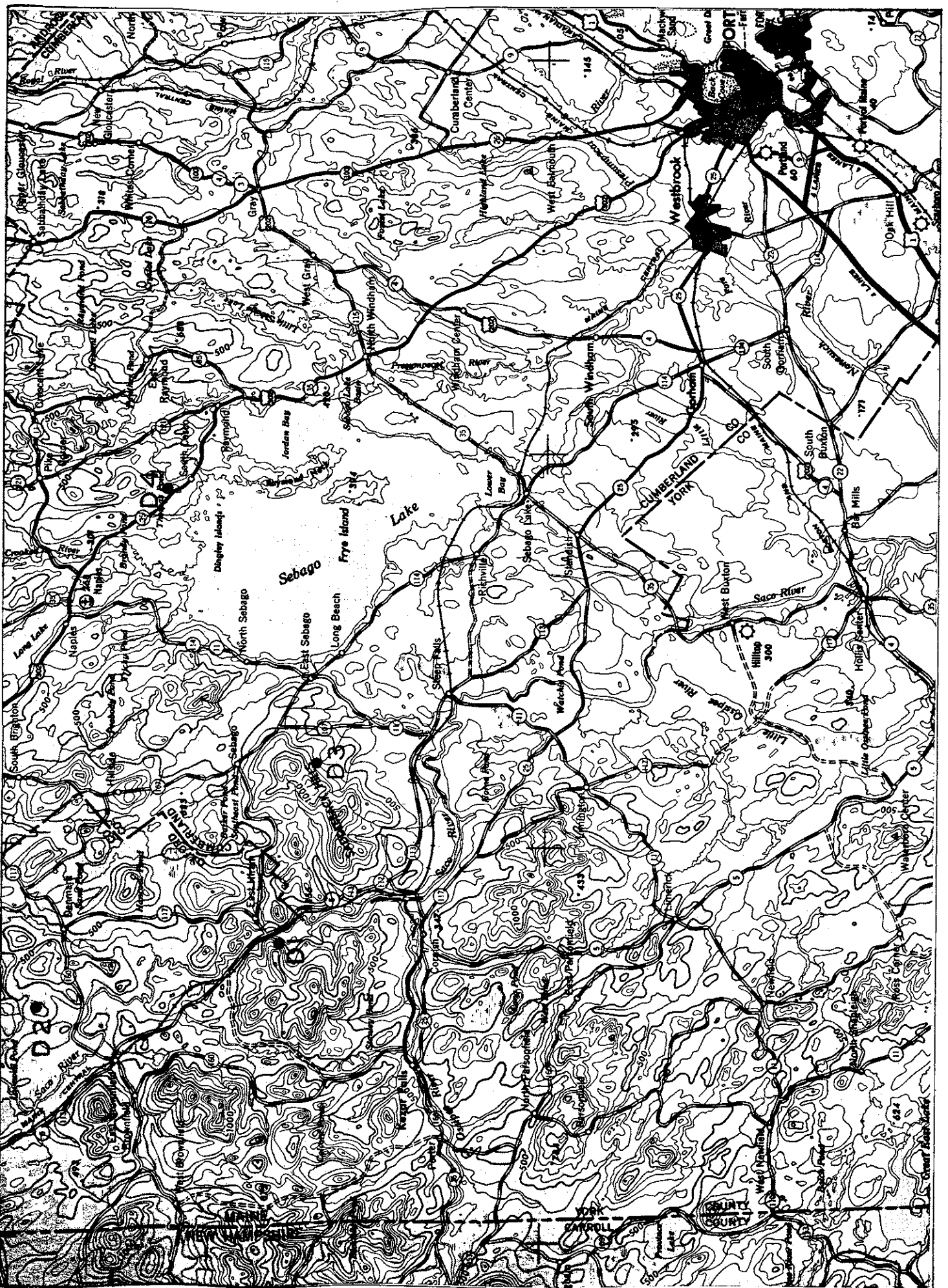


Plate D — Sebago Area

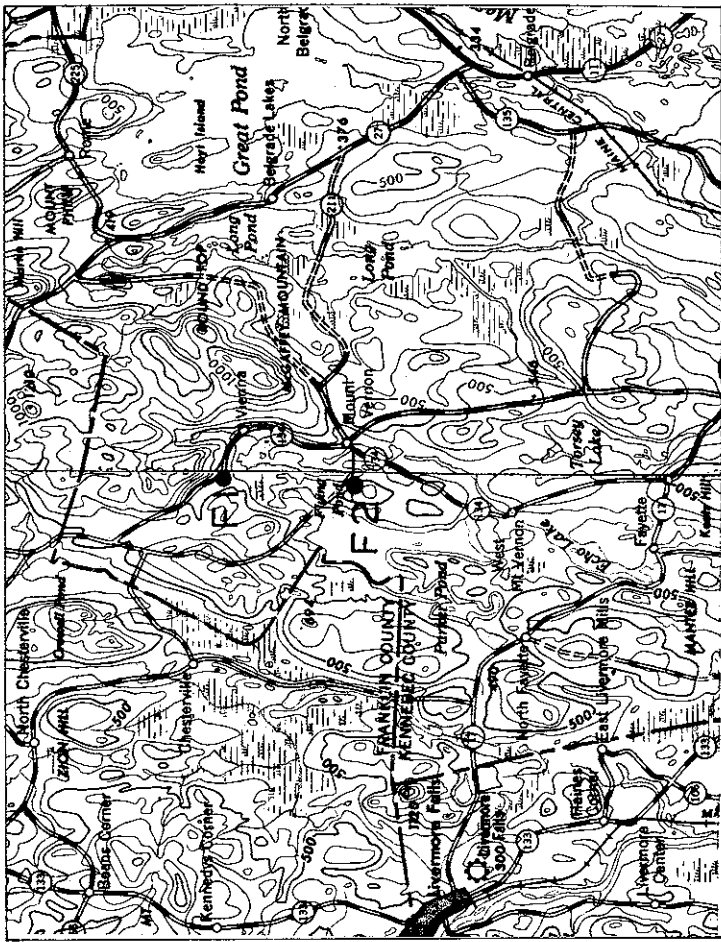


Plate F — Vienna Area

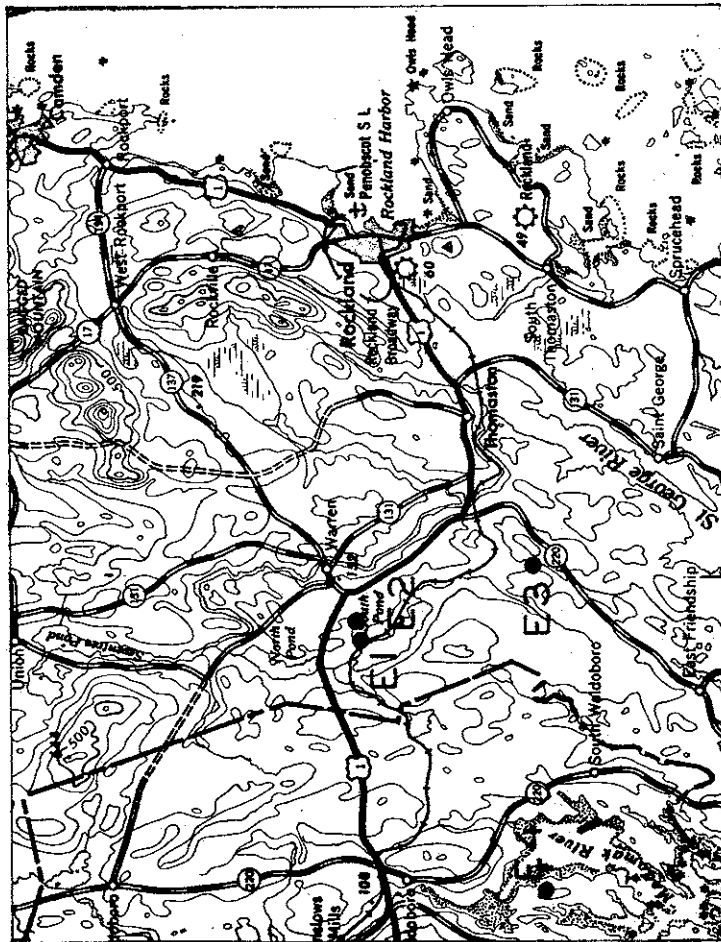


Plate E — Warren-Cushing Area

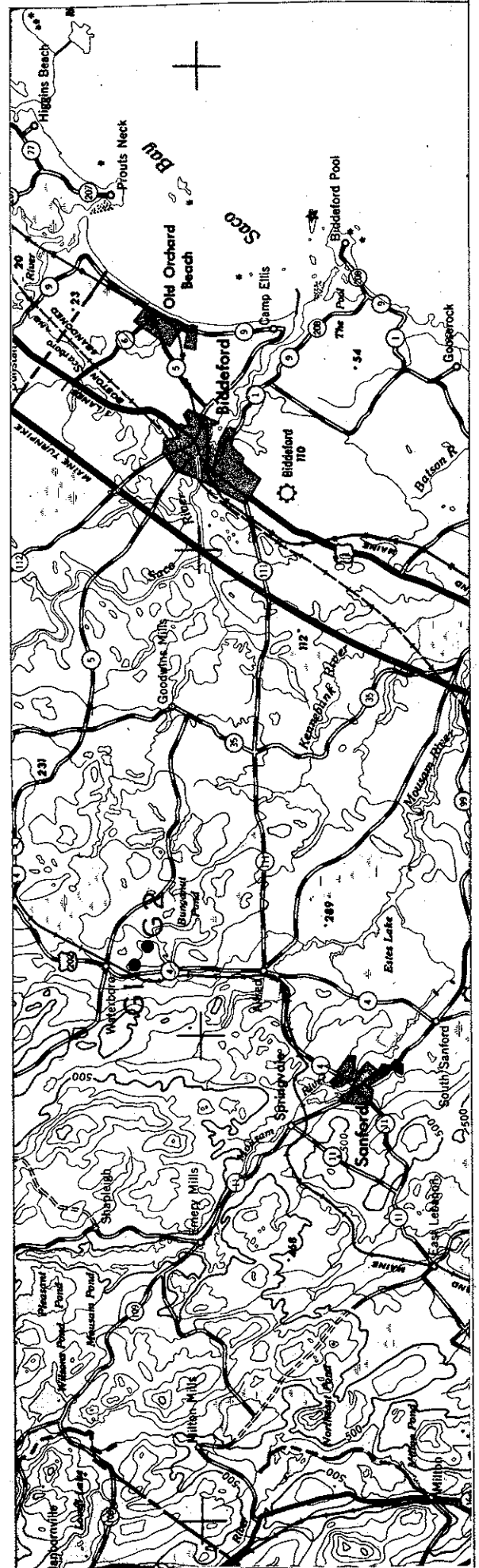


Plate G — Waterboro-Sanford Area

0 5 10 MILES

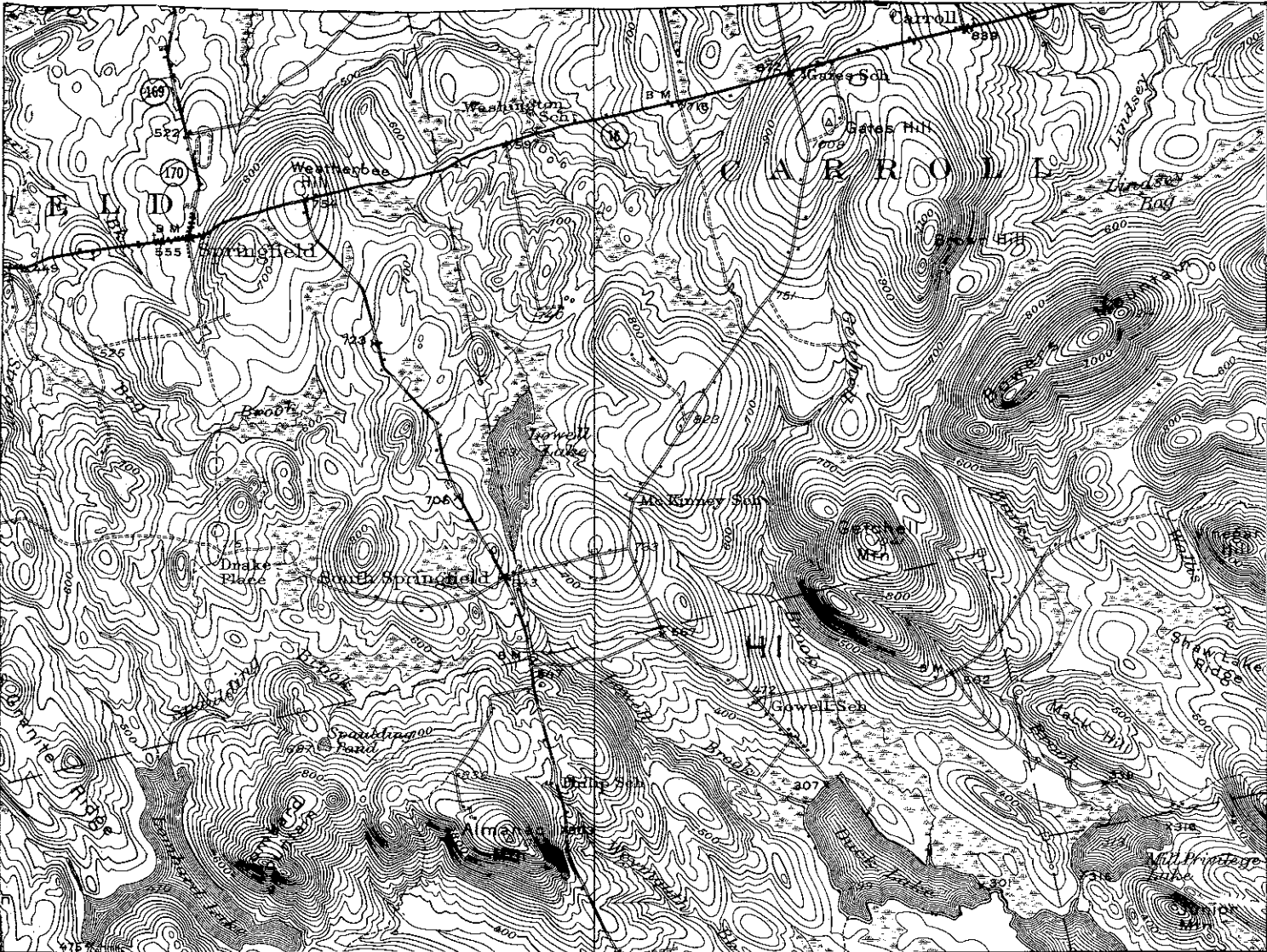


Plate H — Springfield-Lakeville Area



GE
119
A32
no.1

Water Damage Noted. 6/28/92 (11)

12

~~APR 27 1990~~

**DATE DUE
GORHAM CAMPUS**

~~APR 27 1990~~

~~MAR 0 2 1990~~

~~NOV 15 1990~~

~~JAN 0 9 2002~~

~~OCT 2 0 1992~~

~~MAY 5 1992~~

~~[REDACTED]~~

~~MAR 0 7 1993~~

~~[REDACTED]~~

~~SEP 2 8 1993~~

~~DEC 11 2011~~

~~[REDACTED]~~



UNIV OF MAINE - GORHAM



3 1390 00346730 3

QE
119

QE
119
A32
no. 1