

1942

Green and White 1942

Gorham Normal School

Follow this and additional works at: https://digitalcommons.usm.maine.edu/archives_yearbook



Part of the [History Commons](#)

Recommended Citation

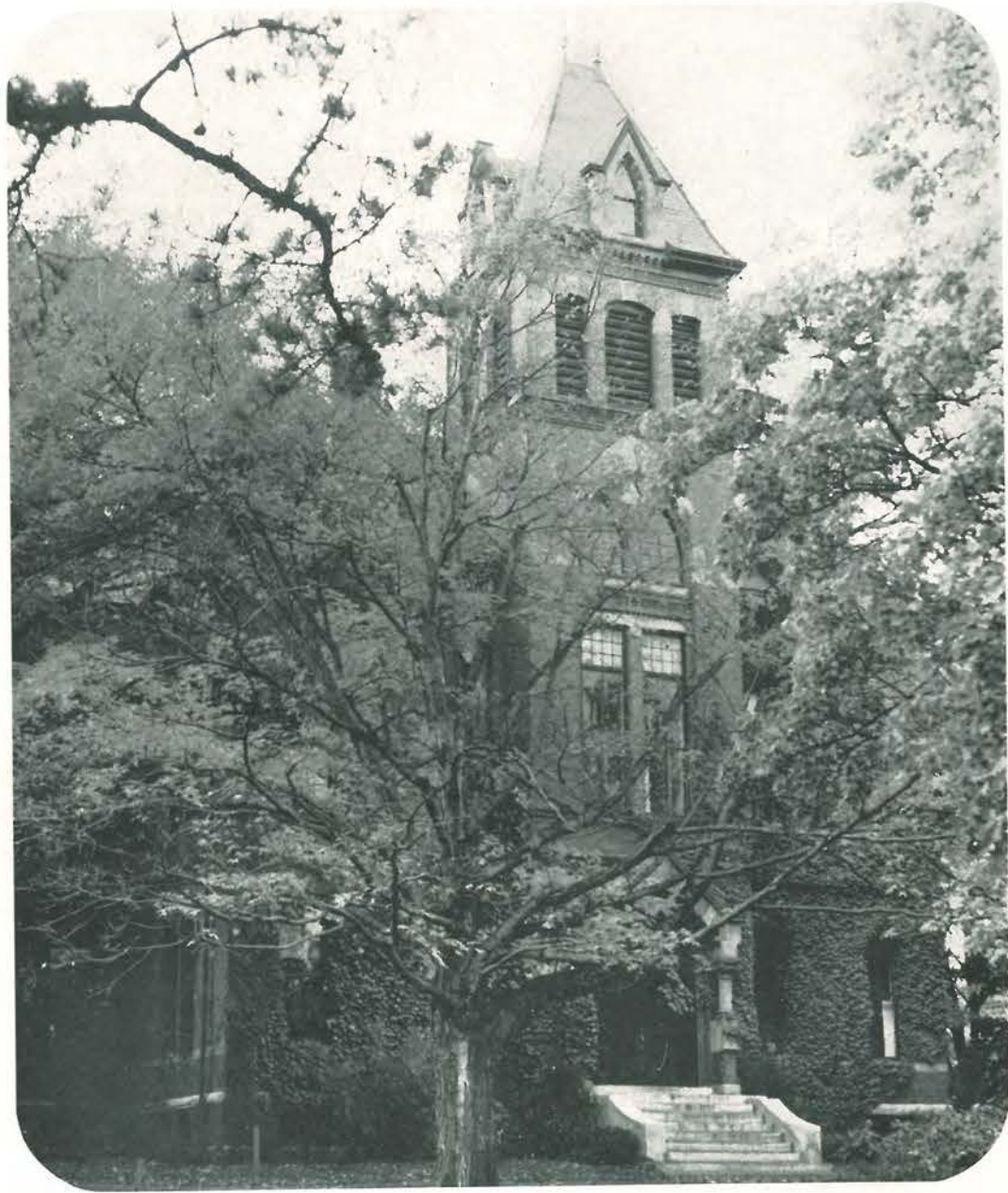
Gorham Normal School, "Green and White 1942" (1942). *Yearbooks*. 17.
https://digitalcommons.usm.maine.edu/archives_yearbook/17

This Book is brought to you for free and open access by the University Archives at USM Digital Commons. It has been accepted for inclusion in Yearbooks by an authorized administrator of USM Digital Commons. For more information, please contact jessica.c.hovey@maine.edu.

The

GREEN AND WHITE

1 9 4 2



Corthell Hall

The
GREEN AND WHITE



VOL. XXIX

GORHAM NORMAL SCHOOL
GORHAM -:- MAINE

DEDICATION

For nine years the "Green and White" was under the able direction of Miss Lewis, who did much for the bettering of this book. She changed the book from one of much writing to one of pictures. She wasn't interested in pictures, just as pictures, but she wanted them to tell the story of our school life. She stressed pictures with action not posed pictures. She worked tirelessly to make each issue a success.

Her interest in this project was second only to that of the Poetry Club. This past year she felt that to carry on both projects was beyond her strength so she gave up her position as faculty advisor of this publication.

In appreciation of her work, her interest, and her help, we, the board of the 1942 "Green and White", wish to dedicate this issue to her.



Miss Lewis



DEMONSTRATION



TRAINING SCHOOL

Did you think the Training School had turned into a menagerie last Fall? It did temporarily when Miss Frost's fifth grade—after studying about animals and how they prepare for winter, decided to have a pet show. The scene was laid at the edge of the pine knoll at the rear of the school, and the entire student body passed by the cages with their voting slips for "smartest pet" and "best all-round pet". There were white rabbits and a big black one, baby kittens, chickens—and a great variety of dogs—from a black baby spaniel who napped in the arms of his proud owner to the large collies and hounds who roamed at will and made friends with everyone. Signs at each cage gave the name and story of each pet and the children supplemented these gladly for all inquirers.

As the Good Deed Club—these students conducted many indoor activities. For instance whenever a spectator saw the children en masse eating apples, he knew it was Grade 5 earning some more money. They accumulated enough to buy a loud speaker for the room so it could enjoy the benefits of the school sound system. They subscribed to *Child Life Magazine* which has been a popular feature in the library corner. They decided to subscribe to help the upper grade's magazine contest—thus benefiting both grades.

Bustling activities at Christmas time brought to light another good deed—outfitting a Christmas box for a rural school in northern Maine. It was a real Santa's work shop. Some of the class wrote letters to the school, others figured postage—everybody repaired clothes and toys. Another group wrote a play centered around the idea and presented it at the Normal school. Instead of exchanging gifts among themselves each child brought a gift for the Christmas box.

The parents of the students and the sixth grade enjoyed their dramatic presentation of *The Elves and the Shoemaker*.

They looked after their own social growth, too, with social dancing every Thursday—Waltzing—Virginia Reels—Pop-Goes-the-Weasel and some European folk dances such as the Bleking Esebogan.

One day the writer found them trying out their literary talents and caught this piece of work:

THE MOON IS A SHARK
The moon is a great big shark
That comes out when it is dark;
The stars are small boats
That try to catch it as it floats.
Sometimes it gives you a surprise
When it looks at you with its big dark eyes.
Sometimes when it floats in the blue
It really seems to speak to you.

JAMES MOODY

SCHOOL

In the middle of the Junior Primary floor there is a large, bright orange table where the interest of the season is always displayed. In the Fall the children gathered for it many bright colored leaves; at Spring time it was covered with pussy willows, mayflowers and forsythia which the children forced in water. Along these elementary scientific lines they planted some flower seeds, discussed transplanting, best times to plant and transplant and care of the garden.

Although they could not read a thermometer, they knew that it is different on different days—that it is not the same indoors as out.

The children were very much interested in seasonal happenings—how people prepare for Winter; signs of Spring always mean crocuses and no more snow suits. They told stories and talked freely about what nature signs they had seen and each one knew he must tell something interesting so the others would want to hear it. This helped him to develop keener sense perception and more accurate meaningful vocabulary. It also served to increase the background of all the children by getting from each what he knows. Spontaneity needless to say abounded in these social situations.

To add to the well-balanced program, there was an activity program every day and if you peeked in the door then you might see some children riding bicycles, others playing with dolls and toys, still

another group sitting in a corner playing games, all learning to share, cooperate and have fun together.

The sixth grade, not to be outdone, produced for the whole school an operetta entitled "Just Before Christmas".

Santa Claus with his brownies and dolls sang and acted in costumes made by their parents. The music department arranged the songs while the language class made words up and printed the invitations in old Christmas cards. The normal school shop helped with props and frames. Miss Slosberg and Miss Poli, the student teachers, directed the show.

The cast did such a good job and kept such exceptional behavior during rehearsals that they were given a big party afterwards.

Their business ability may be measured by the class treasury which had by the end of the year over \$30 from the sale of Christmas cards and valentines. With the money, they bought yarn with which the whole class knitted six-inch squares for a Red Cross afghan.

Everyone in school concentrates on not being late and Mrs. Gross' class made a special effort this year, but one boy who didn't quite make it once or twice, offered the following solution in literary style:

A funny bird, strange and annoying,
flew into my bird house.
Every day he starts to sing about
six o'clock. The other birds join

(Continued on Page 75)



INDUSTRIAL



Academy Hall

ARTS

The past two years have seen many changes in the course of study and work planned for the shop boys. Mr. Savage was appointed as head of our department and accomplished much toward changing our course to a general shop basis from the previous unit shop setup. This meant a wider range of shop subjects but not going deeply into any one. Under the former setup on a unit shop basis more time was allotted to fewer courses. We studied Advanced Metal and the History of Industrial Arts Education under Mr. Savage and he supervised our practice teaching in the general shop at South Windham.

Mr. Smith replaced Mr. Brown who retired last year. He taught a laboratory course in Electricity, General Metal, and supervised the practice teaching in Metal Work. Our new Electricity laboratory was the result of his labor and planning.

Mr. Cilley's course in Woodwork was expanded to include Bench Work (use of hand tools), Woodturning, and Pattern-making. We also had Mechanical, Machine, Architectural Drawing, and Cabinet Work from him. He supervised all our practice teaching in Drafting and Woodwork in Academy Hall.

Mr. Packard taught us Printing, Sheet Metal, and Guidance. This year he had the grade classes in the printshop.

We had many of the same courses that the other divisions had. We spent much time studying Algebra, Plane and Solid Geometry, Trigonometry, and Calculus which we had from Mr. Hill and Miss Upton. Elementary Industrial Arts and Freshman Biology from Miss Keene, School Law, and General Science from Mr. Woodward, Hygiene from Miss Flint, Sociology from Mr. Bassett, Principles of Teaching from Dr. Bailey, Oral English from Mr. Sloat, Literature from Miss Lewis, and Social Science from Miss Wood. Sociology, Hygiene, and Literature were added to our course. Practically all of our courses were either new or were altered greatly.

The purpose of these changes was to produce a teacher who could instruct pupils in any phase at all of elementary

shop work, elementary science, or mathematics.

It was felt that an elementary knowledge of many phases of industry was more desirable than a more extensive knowledge of two or three.

To make this reorganization possible and to further the purposes outlined above many prominent and radical changes were made in the physical layout.

Academy Hall used to have three separate shops on the first floor, Woodturning, Machine, and a Drafting room; two shops on the second, Bench Woodworking and a Cabinet shop. Since being remodeled it had on the first floor a large shop for all the woodworking including many new machines, new benches, large tool closets amply equipped, and a small but excellent finishing room. On the second floor in place of the Cabinet shop was a fine, quiet library of all types of shop books, and a new electrical laboratory. Where the bench room had been there was a new drafting room and a small storeroom. Mr. Smith's and Mr. Cilley's offices were here also.

The brick building where the old Sheet Metal and Forge shops used to be was rebuilt. It was changed to a general metal shop, and forging, welding, pattern-casting, machine shop, sheet and art metal were taught. It was equipped with metal-working lathes, shapers, a milling machine, forge, pattern-casting equipment, gas furnaces, welding equipment, and sheet and art metal equipment.

The government has been operating a night school here from four in the afternoon until eight in the morning. They were being trained to operate machines.

Mr. Savage had his office in this building and a new heating system was installed.

Of course much of this sudden interest in the Industrial Arts Courses here and throughout the country was due to the war situation. However, it was felt that, due to the steady growth of this phase of education prior to the war and the now proven need of it, there will be little or no decline in interest.

STUDENT



Green and White Board

GREEN AND WHITE

All of you know the primary function of the GREEN AND WHITE board, of course. They were the ones who brought you your yearbook. The board met early in the fall, with Editor-in-Chief Florence Andrews, for the purpose of organizing and planning. Mary McGinty was elected as Assistant Editor, and Carolyn Patriquin as Secretary.

Almost any Wednesday club period you could find them gathered in Miss Murley's room pouring over write-ups, selecting pictures, or swapping ideas. As if enough work could not be accomplished in one period, the board held Tuesday evening meetings in the fall.

But all was not work for the members of the board. Miss Murley entertained at a murder party where everyone got murdered properly, and had a wonderful time. They will long remember this exciting evening.

Under the timely advice and friendly leadership of the two advisors, Miss Murley and Mr. Bassett, the book progressed rapidly. The board heeded your pleas for something different. The theme of campus buildings was carefully worked out to further the idea of a new yearbook.

As you read through its pages, pausing to see yourself between the covers, read-

ing your write-ups, getting friends to autograph their pictures with little witticisms, we hope you will fill many happy hours and derive a measure of the pleasure the board has had in its preparation.

Members:

Editor-in-Chief FLORENCE ANDREWS
Assistant Editor MARY MCGINTY
Business Manager JOHN GROVER
Assistant Business Manager EDITH THAYER

Associate Editors

SHIRLEY M. STANLEY
 EDITH THAYER
 CAROLYN PATRIQUIN
 BETTY QUINN
 MARY SNELL
 JUDY EPSTEIN
 PHYLLIS DYER
 HELENA GAGNE
 OWEN DURGIN
 JOSEPHINE IRVING
 ROBERT VAUGHAN
 WILLIS HANCOCK
 EDWIN HODGKINS
 PHIL JAMES

Typists

GENEVA HAWKES
 EVELYN JONES

Faculty Advisors

MISS HELEN MURLEY
 MR. RAYMOND BASSETT

PUBLICATIONS

THE ORACLE

The Oracle this year was a mimeographed rather than a printed paper. Instead of the usual six copies a year we had a copy a week the first semester and a copy every two weeks the second semester. Each issue featured some special event to take place in the course of the week.

The Sept. 15 issue was the club issue and featured the F. T. A. which had just been reorganized. The Sept. 29 issue was devoted to the second Historical Pageant. The Oct. 6 issue forecast the coming of Dr. Payson Smith under the sponsorship of the F. T. A. The Oct. 13 issue announced the coming track meet with R. I. C. E. The Oct. 20 issue featured Superintendent's and Principal's Day, a long planned for event. The Oct. 27 issue gave us the idea that G. N. S. was striving for a Teacher's College Rating. The Nov. 3 issue celebrated the coming of Armistice Day by having a patriotic cover. The Dec. 8 issue foretold G. N. S. going on the air for its annual broadcast. The Jan. 26 issue announced the appointments for the third quarter's practice teaching. March 27 issue was put out by the Journalism class and thus featured them.

Besides these special features the Oracle had three or four cartoons each week depicting school life or coming events.

In each issue there was a sports column in which it related all particularly outstanding events of the past week and told of coming events of interest to the school.

There was a poetry nook which was a great favorite. This column contained poems written by the students and by famous poets which the students particularly liked.

The Oracle had two staffs this year. One which worked the first quarter and successfully put out the first issues, and a staff that put out the issues the last three quarters.

Members of the first staff:

Editor MABEL MURPHY
Production Manager EVELYN WARD
Circulation Manager ALEX CUMMING
Art Editor HELENA GAGNE
Contributors CATHERINE HANSON
 EILEEN CULLINAN
 KITTY LEWIS
 EDNA DEARBORN
 RAY KNIGHT
Typists JUDITH EPSTEIN
 DOROTHY BAKER

Second Staff:

Editors EILEEN CULLINAN
 PAULINE JOHNSON
Production Manager ELLEN ROBERTS
Circulation Manager LINDLEY WIEDEN
Art Editor BETTY LEE
Contributors MARY CLARK
 ZITA CULLINAN
 CONNIE CULLINAN
 ELEANOR BARTON
 MARJORIE DAME
 RAY KNIGHT
 MAURICE EDWARDS
Typists PHYLLIS COLE
 THELMA YOUNG

Oracle Board



STUDENT

CIVIC COMMITTEE

The first regular meeting of the Civic Committee was held Thursday, Sept. 18 with the president, Betty Leach, presiding. A chapel program was presented by the club in the morning. Bettina Pillsbury gave the welcome address to the students, Pauline Supple rendered a piano selection, and Frank Catir gave two vocal solos. Dr. Bailey gave an address to the student body.

The first activity of the club was the appointing of committees to arrange for Superintendent's Day. They were as follows: Invitations, Albert Wakefield; program, Evelyn Ward; tea, Doris Whitely; dining-room, Christine Welch; ushers, Alex Cumming.

At the third regular meeting a committee was appointed to draw up a slate of candidates to be elected to the Boston Convention on Nov. 14 and 15. Those elected were: Albert Morton, senior; Gerry White, junior; Blanche Brume, sophomore; and Robert Vail, freshman.

At the next meeting they voted to conduct Citizenship Week the second week in January. Eileen Cullinan was appointed chairman with the following committee: Edna Dearborn, Betty Kennedy, Kay Howard, Tony Pecoraro, George Etzel, and Ed. Hodgkins.

One of the biggest events sponsored by the club was the annual Back-to-Gorham Day on February 7. Edna Dearborn was

appointed chairman with the following committee: Francis Wiggin, Mr. Packard, Eleanor Gould, Miss Woodward, Florence Coombs, and Doris Whitely.

A discussion was held on how to conduct an efficient Red Cross Drive. Betty Kennedy was chosen chairman of this drive. A slate of candidates for the New York Convention was drawn up and those chosen were Alex Cumming, senior; Virginia Hall, junior; and Pearl Hartt, sophomore.

An important feature of this club was the point system which was conducted as a survey and check on the student activities. After the questionnaire had been presented to the student body, the club then decided to revise this system and chose the following committee: Chairman, Christine Welch, Francis Wiggin, Robert Dolloff. This committee drew up a new system which will go into effect next fall.

The members were: President, Betty Leach; Vice President, Lewis Pillsbury; Secretary, Frances Libby; Ray Austin, Phyllis Dyer, Christine Welch, Phillip James, Adeline Montebello, Pearl Hartt, Ruth Davis, Ed. Hodgkins, Virginia Hall, Edna Dearborn, Betty Kennedy, Catherine Howard, Eileen Cullinan, Joanne Ashby, Betty Quinn, Mildred Jackson, Ruth Bishop, Lawrence Arnold, Virginia Clark, George Etzel, Francis Wiggin, Joe Castelucci, Tony Pecoraro, Gwen Elwell, Eve Moses, Bettina Dalton, Robert Dolloff and Elton Carmichael.

Civic Committee



GOVERNMENT



House Committee

HOUSE COMMITTEE

A "Get-Together" in Center on the evening of Registration Day was the first evidence of the year that the House Committee was functioning. The object was to get to know the Freshmen and make them feel more at home. Games and relays were played and refreshments were served. It was here that the upper classmen taught the Freshmen some of the school songs. Who can forget Miss Harris' reading on the subject of blowing out the candle?

Open House was held in October to which the parents and friends, of the girls living in the dormitories, were invited. Members of the House Committee acted as guides. Refreshments were served in Robie Reception Room. This party was so successful that it resulted in another, in the spring. On the night of October 30, five bells were heard to ring throughout the dormitories, but when the girls reached their fire drill stations they found it was not a fire drill after all but an invitation to a Hallowe'en party in Center. Each floor prepared an impromptu stunt. Some of the high-lights were, a baby parade, a funeral service preached from a Sears Roebuck catalogue, and a repro-

duction of Chapel exercises. At Christmas time a simple but effective pageant, showing scenes from the Nativity, was presented in Chapel.

These were only a few of the many activities of this organization. Its work was not purely social, however, it had administrative duties and through it many of the privileges, enjoyed by the dormitory girls, were gained. When you heard bells ringing for study hours or someone whispering, in the corridors, that you were making too much noise, you could be sure a member of the House Committee was somewhere around.

First semester officers were: President, Gerry White; Vice President, Marjorie Doe; Secretary, Carolyn Patriquin. The other members were: Priscilla DeCoster, Pearl Hartt, Mary Dodge, Ernestine Smith, Betty Kennedy, Doris Colley, Virginia Clark, and Nancy Goodwin.

Second semester officers were: President, Doris Whitely; Vice President, Edith Thayer; Secretary, Thelma Young. The members were: Marjorie Butler, Frances Day, Evelyn Ward, Elizabeth Bacon, Catherine Howard, Bettina Dalton, Elvira Birney, and Mary Kimball.

MUSIC



Glee Club

The Glee Club was one of the most active organizations in the school. This year under the direction of Miss Andrews, our genial teacher of do-re-mi-ing, it undertook a rather strenuous program including:

A Pageant of Art and Music in which the Art, Music and History departments cooperated to produce a colorful, tuneful, and historically accurate program presenting certain stages in the growth of America.

A night of caroling just before the Christmas recess. Those who sang went to the homes of the sick and aged to sing the favorite old-time carols. After the caroling the members went to the Gorham Restaurant and consumed coffee and doughnuts.

A radio broadcast in connection with the "Maine Schools on the Air" program under the direction of Dr. Harrison Lyseth, who is now Superintendent of Schools in Portland.

A "Night of Music" in which all of the musical organizations took part in a program of old and new music. Besides the

various chorus selections there were several specialties including a violin quartette, a scene from "Madame Butterfly" presented by Mary Lou Stuart and Evelyn Ward as Madam Butterfly and Suzulsi, and several vocal solos by Earl Renwick of Portland.

An operetta "The Mocking Bird" was presented in March. Evelyn Ward sang the title role supported by Virginia Hall, Lewis Jordan, Richard Kilroy, Paul Petrin, Doris Whitely, John Alden, Fred Jeffery, Frank Catir, Mary Lou Stuart, Edna Dearborn and Philip Kimball. The Cassettes and members of the chorus were: O. Riley, M. Clark, C. Hanson, G. McGrail, N. Butterfield, L. Meserve, B. Kennedy, M. Dodge, C. Goff, B. Dalton, P. Hartt, R. Alden, H. Benson, W. Turner, W. Garland, O. Durgin, P. James, A. Mitchell, P. DeCoster, B. Pillsbury.

After the spring vacation a picnic was held for the members of the cast and was much enjoyed.

Members of the Glee Club were: F. Catir, K. Hawkes, H. Benson, F. Jeffery, R. Neal, W. Turner, P. Kimball, R.

ORGANIZATIONS

Miller, P. James, L. Pillsbury, A. Mitchell, R. Kilroy, A. Bass, D. Pierce, O. Durgin, P. Doer, R. Dolloff, O. Hill, L. Eaton, W. Garland, J. Alden, L. Jordan, L. P. Petrin, L. Wieden, E. Staples, G. McGrail, F. Libby, E. Sproul, D. Whitten, O. Conary, R. Kinney, L. Clark, G. Hicks, R. Swett, E. Goddard, B. Emery, E. Ward, G. Knapp, N. Butterfield, M. L. Stuart, C. Kennedy, L. McGee, M. Dodge, A. Sugg, E. Magure, C. Goff, M. Frank, C. Nickols, M. Bennett, D. Whitely, F. Sias, B. Pillsbury, H. Cox, J. Skillings, R. Greene, J. O'Mara, T. Young, A. Lowell, M. Clark, M. Spring, L. Thompson, J. Tozier, B. Frost, V. Davis, L. Meserve, P. Hartt, O. Riley, B. Dalton, C. Welch, E. Dearborn, B. Libby, L. Dickens, M. Edwards, R. Alden, P. Bent, E. Gould, M. Doe, H. Heel, C. Hawkes, P. DeCoster, C. Hanson.

The Orchestra, another important musical organization at Gorham this year, played at the "Night of Music" and presented several selections at the broadcast. At graduation it played the processional and recessional for the faculty and graduating classes. The orchestra members are: H. Heel, P. Petrin, E. Magure, M. Edwards, M. Clark, G. Hicks, L. Thompson, E. Russell, V. Hall, R. Dolloff, M. Stuart, J. Tozier, G. Sanborn, J. Alden, O. Riley, W. Wiggin, F. Wiggin, P. Kimball, K. Hawkes, G. Elwell, L. Jordan, O. Durgin, and P. Hartt.

Another organization which added to the spirit of the basketball games was the band. This was organized and led by Francis Wiggin and other members were: P. Petrin, R. Dolloff, J. Tozier, G. Sanborn, W. Wiggin, K. Hawkes, G. Elwell, L. Jordan, O. Durgin, and A. Bass.

Orchestra



Y. W. C. A.

The original "big sisters" of Gorham are the members of the Young Women's Christian Association. Each member undertakes to befriend a freshman girl and acquaint her with the students, faculty, the school and its traditions. The purpose of the organization is to be a Christian influence on the campus.

The Y. W. held its meetings in Center every Thursday evening. At these meetings outside speakers as well as faculty members discussed current problems and told tales of travel. Some of the speakers during the year were: Miss Eames, Mr. Dubbs, Mr. Sloat, Miss Murley, and Mr. Boobar.

The Y. W. C. A. was constantly active throughout the school year. It started the school year in the fall by sponsoring a Freshman reception in Russell Hall. At this time freshmen and faculty became acquainted.

Later a banquet was given in East Hall dining room for a reunion of the old members. A doughnut sale was held monthly and school stickers and school stationery were sold the year long and Christmas cards were sold at Christmas time.

At Christmas time this organization sponsored a "sing" in Robie Hall reception room. At this gathering "The Birds Christmas Carol" was read by members. A second party was the Valentine party at which the students and faculty participated in games, and refreshments were served.

This year the Y. W. undertook as a project, the refurnishing of the Y. W. room in Robie Hall. The Cabinet members purchased a new rug, two new chairs, new draperies, a new lampshade. Miss Woodward donated a new bookcase and Dr. Duley donated two new pictures. The room, now complete, is worthy of praise.

The Y. W. C. A. cabinet members are: President, Ruth Davis; Vice President, Katherine Huston; Secretary, Christine Welch; Treasurer, Bettina Pillsbury; Program Chairman, Florence Coombs; Music, Ernestine Smith; Finance, Rebecca Kinney; Publicity, Betty Kennedy; World Fellowship, Doris Colley; Recreation Chairman, Betty Leach; Social Service, Jean Thompson.

FUTURE TEACHERS OF AMERICA



<i>President</i>	RUTH ALDEN
<i>Secretary</i>	GERALDINE McGRAIL
<i>Treasurer</i>	FRANCIS WIGGIN
<i>Librarian</i>	BETTY WHITE
<i>Historian</i>	LORRAINE MCGEE
<i>Song Leader</i>	FRANK CATIR

Remember that day when Miss Wood sent out the call for seniors to help in the rebirth of the Russell Chapter of the Future Teachers of America? It sounded so solemn and serious that some of us went because we thought we ought to, but when the club really got underway, we saw its potentialities both for invaluable help and for fun.

Do you recall our first real meeting when Dr. Russell gave an account of teacher organizations in America and his experiences with them? Then came the first aid lecture and demonstration by four able Red Cross men from Portland. Who could forget the heated discussion about a teacher's relations to her community conducted by the experienced teachers of the club?

To add to the variety of the club's bi-monthly meetings several members showed their ability as present cooks—one supper ended in a lusty sing—another with stories and readings, by Mr. Woodward, of some of his poems.

Can we forget the fun, one Monday afternoon, of discovering what our personalities were really like through the California Personality test?—everyone was a little surprised.

Did you ever try to guess intelligence quotients from pictures of children you had never seen? The club did when Miss Murley gave an illustrated lecture about some unusual pupils and problem children which she had had in school. Although a recheck proved many of the guesses to be "way off", seeing the faces of these children while their problems were discussed made this meeting more interesting and valuable.

The rest of the school will remember with us the lecture of Dr. Payson Smith in the fall, the twenty new volumes on education presented by the Future Teachers, and Doctor Duley's discussion of civil liberties in time of war.

This is the work and play of the club which under the guidance of Miss Wood is a "must" with all seniors.

Members:

G. Alden, R. Alden, F. Andrews, D. Armstrong, J. Ashby, R. Austin, M. Barbarick, M. Bragdon, E. Cullinan, E. Dearborn, M. Dodge, W. Garland, G. Hawkes, M. Hawkes, E. Hodgkins, P. Hodsdon, A. Howard, L. Johnston, E. Jones, E. Jorgensen, E. Kimball, G. Knapp, R. Knight, B. Leach, L. McGee, M. McGinty, G. McGrail, E. Merithew, A. Morton, J. Miles, I. Nelson, J. Parks, G. Pendexter, L. Poli, B. Quinn, M. Raynes, O. Riley, A. Seaward, H. Slosberg, M. Snell, E. Sproul, E. Staples, E. Thayer, B. Thomas, R. Vaughan, C. Welch, W. Welton, B. White, D. Whitten, F. Wiggen, R. Wing, T. Young.



LITERARY



Poetry Club

POETRY CLUB

OFFICERS

President SHIRLEY M. STANLEY
 Vice President BETTY FROST
 Secretary HELENA GAGNE
 Treasurer GERALDINE WHITE

Advisors

MISS BESS LEWIS
 MISS HELEN ALLEN
 MISS BERTHA FROST
 MRS. RICHARD SAVAGE

Each year the Poetry Club has a specific theme to be developed throughout the year, and this year our topic was "sectionalized poetry"; that is, poetry representing the different parts of our great country. The year's work started on October 8, 1941 with the presentation of Indian Poetry under the chairmanship of Bettina Pillsbury. October 15, Maine Poets were discussed, Shirley Stanley, chairman. One of the most looked forward to events of the Poetry Club was the annual fall stunt party, and this was held on October 18 at Union Hall. Kitty Lewis was in charge. October 22 we finished the discussion of New England. A fall outing was next held on Long Island in Casco Bay, planned by Doris Whitely, Lorraine McGee, Evelyn Ward, Doris Colley and Jocelyn Tozier. At this time the following people were inducted into membership: Priscilla Bent, Doris Armstrong, Adeline Montebello, Phyllis Norwood,

and Josephine Irving. November 12 was devoted to Thanksgiving with Helena Gagne as chairman. November 26 Doris Whitely presented a discussion of the poetry concerned with "Our Oceans". December 10 the Middle West had its moments of glory with Eleanor Gould. At this time of the year the Poetry Club fixes up boxes of clothing and games to send to needy schools all over the state, and this was done as usual. December 17 a Christmas tea was held in Robie reception rooms at which Miss Bess Lewis gave her beautiful illustrated talk on Madonnas. The chairman of this occasion was Catherine Hanson. January 7, 1942 "Our Pacific Northwest" was presented by Ruth McDonough. January 14 "The Pacific Southwest" had its poetry too as was shown by Eleanor Gould. February 4, a program entitled, "Riders of the Range" was presented by Helen Heel. The following were elected to fill vacancies: Louise McLain, Mary Curran, Mary Bennett, Elizabeth Bacon, Barbara Libby, Virginia Davis, and Winifred Carll. February 11 a Valentine Party was held in Miss Lewis' room, later retiring to Miss Andrews' room for the musical portion of the program at which time Gerry McGrail sang love songs accompanied by Laura Meserve. The program concluded with Miss Lewis reading love poems. February 18 was devoted to the founders of our great

(Continued on Page 75)

CLUBS

LIBRARY CLUB

President EDITH THAYER
 Vice President NORMA BUTTERFIELD
 Secretary ELIZABETH BACON
 Treasurer DORIS ARMSTRONG

"There will be an ice cream sale tonight at 9:45." That was the announcement heard every Wednesday night this year which told you that the Library Club was hard at work.

About twice a month we learned about the recent books by discussing the "Omni-book", which is a monthly magazine, giving the synopsis of five best sellers. Another way we became acquainted with books was by having Miss Small from Gorham speak to us at a supper meeting in East Hall.

We opened and closed the year with a recreational meeting. Last fall the club went to Alden's Pond for a picnic. At this, the freshmen were initiated. For our spring outing we boarded a truck and journeyed to South Gorham. The main purpose of this trip was to get a taste of those salads made by the women of South Gorham. They are worth trying.

We mustn't forget the chapel program we presented during Book Week. Prob-

ably you didn't know what a variety of characters you were associating with every day, even the Iron Duke.

In March, a musical program was held in the music room in Corthell Hall. At this meeting Miss Eames played the piano and also recordings of Mexican music.

Not to be different from the other organizations we sponsored two dances. When you attended one you found yourself in the "Library" of Robie Hall. The second dance was sponsored after the Keene basketball game. The members of the club showed their ambition by making sandwiches and punch for refreshments.

During the year Miss Eames furnished entertainment for special meetings by showing the moving pictures and giving lectures on her trips. You might even see yourself in some of the pictures which she took on campus.

Members: M. Bragdon, I. Boynton, B. Davis, J. Epstein, H. Goodwin, P. Hartt, R. Kinney, B. Libby, A. Lowell, M. MacEacharn, L. McLain, A. Montebello, I. Nelson, P. Norwood, J. Pate, E. Rowe, M. Raynes, A. Seaward, E. Staples, J. Thompson.

Library Club



DRAMATIC CLUB

For the past year every Friday at the beginning of club period we saw President "Mike" Pillsbury and Mr. Sloat out in the corridors rounding up the members of the Dramatic Club. Helping them were the other officers: Ruth Alden, Vice President; Bettina Pillsbury, Secretary; and Phyl Hodsdon, Treasurer.

The first of the year was devoted to finding and selecting suitable new members. The initiation party was held in the game room and then adjourned to the Gorham Lunch for a banquet. The newcomers were officially welcomed and warned that three unexcused absences would mean being dropped from the club.

This year the Dramatic Club voted to turn over one-half of the proceeds from the annual play to the Red Cross. The play they presented was Mark Twain's *A Yankee in King Arthur's Court* by John G. Fuller. Bob Dolloff played Hank, the leading role, superbly. The school should never forget Wayne's portrayal of Merlin the magician. Certainly no one else could have wrung his hands and moaned and groaned so realistically. As always, something had to go wrong. Mr. Towne's automobile (?) gave him a little trouble and the curtain was twenty minutes late due to his non-appearance. Only his excellent performance as Sir Sagrmoor saved him from bitter criti-

cism. The club did a successful job in putting on this play without elaborate scenery and costumes.

In the weekly meetings the program chairman introduced some novel ideas. Ask Ray Knight about the dead man he found in the corner of room six. Bill Welton can tell you something about dead men and drunks too. On Friday the Thirteenth Laura Meserve gave one of her readings on the subject of Friday the Thirteenth. The chairmen, Mildred Jackson, Bettina Pillsbury, and Laura Meserve should be congratulated.

The club finished its year with the annual election of officers and the spring picnic. The following people were members:

R. Alden, D. Armstrong, J. Ashby, E. Bacon, P. Bussone, J. Daggett, M. Edwards, C. Flaherty, P. Hart, P. Hodsdon, M. Jackson, G. Knapp, L. Meserve, R. Knight, B. Pillsbury, L. Pillsbury, S. Stanley, K. Welch, W. Welton, E. Ward, E. Bennett, H. Frank, R. Towne, R. Osborn, M. Frank, A. Cumming, J. Epstein, Z. Cullinan, M. Dame, H. Goodwin, R. Miller, R. Vail, G. Sanborn, A. Howard, H. Slosberg, V. Coyne, P. Cole, K. Flaherty, D. Ball, L. Clark, G. Hicks, R. Carter, R. Dolloff, W. Garland, F. Catir, E. Carmichael, E. McDonough.



ART CLUB



Early in the first quarter, the Art Club under the sponsorship of Miss Dahl met for the purpose of organizing. The officers elected at that time were: Gerry Mayberry, President; Virginia Davis, Vice President; Betty White, Secretary; Lynedon Eaton, Treasurer.

The Art Club decided to abandon its policy of unit projects as carried out in previous years and devote its time to individual work. A committee of four, Gerry Mayberry, Bob Vaughan, Kay Huston, and Forrest Gowen, was appointed to make a list of projects suitable for individual work. This list included decorating of wooden ware such as boxes, candle holders, trays; second on the list came linoleum blocks for special Christmas cards; third came leather and metal work.

Although the club spent a large part of its time in creative work, it was not inactive socially. In the fall a Treasure Hunt Picnic held at Alden's Pond was

much enjoyed and long remembered by all the members present. Later in October, they put on one of the most successful dances of the year, a Barn Dance in the Gym. In the spring a Supper Party and later a picnic were held.

During the first quarter the Art Club cooperated with the Music and History Departments to present a pageant of American Progress which was presented in Russell Hall before the school.

Members:

Philip Archambault, Eleanor Barton, Jack Brown, Blanche Brume, Winifred Carl, Helen Cox, Virginia Davis, Peggy Dow, Phyllis Dyer, Lynedon Eaton, Nancy Goodwin, Forrest Gowen, John Grover, Priscilla Hicks, Kay Huston, Gerald Mayberry, Phyllis Norwood, Lucy Poli, Betty Quinn, Hilda Rackliff, Mary Raynes, Mary Rowe, Alice Seward, Ernestine Smith, Emily Sproul, Margaret Swett, Warren Turner, Robert Vaughan, Betty White, Dorothy Whitten.

FRATERNITY



Alpha Lambda Beta

ALPHA LAMBDA BETA

Due to the retirement of Mr. Brown, who for eleven years assisted in building the Alpha Lambda Beta Fraternity to its present standing, the fraternity found itself this year without a faculty advisor. They chose "Spin" Hill as their advisor, who with his keen sense of humor and his musical talent helped to make the meetings and get-togethers a lot of fun.

As a result of the "jam sessions" that were held after meetings, the boys decided to organize a band using their most talented members. After ironing out a few of their sour notes, the band made its debut at the Art Club Dance. Everyone enjoyed the original compositions of various "hill-billy" songs.

In December a Christmas party was held in the recreation room. Here the members and their guests had their first opportunity to hear Santa Claus emit real music from a fly-spray. Harry Morey,

the Santa Claus, certainly added his bit to the fun of the party.

In the Spring they had their annual initiation with everyone taking part either on the giving or receiving end of the paddles.

The year's activities ended with the outing in June.

The members were: Pres., F. Jeffery; Vice President, W. Hancock; Secretary, C. Brown; Treasurer, R. Neal; Scribe, H. Benson; Sergeant-at-Arms, W. Gammon; Chap., P. James; F. Wiggin, E. Hodgkins, A. Morton, R. Neal, E. Jorgensen, L. Eaton, R. Vaughan, K. Hawkes, G. Mayberry, O. Hill, J. Leavitt, D. Pierce, J. Grover, P. Petrin, R. Black, A. Bass, E. Hadlock, C. Pendexter, P. Kimball, L. Arnold, W. Roberts, D. Cameron, A. Benson, L. Jordan, B. Osborne, R. Towne, F. Vaitones, N. Ward, G. Sanborn, F. Bradford.

FRATERNITY

KAPPA DELTA PHI

Kappa Delta Phi Fraternity of Gorham is an active chapter of the national fraternity.

It held its meetings every other Tuesday evening after which the members presented entertainments and served refreshments. In addition to its regular meetings, the fraternity this year sponsored a Fall Dance early in the first quarter. The men who were directly responsible for its success were Alec Cumming, Lewis Pillsbury, and George Etzel. This dance was so successful that a few months later it presented another evening's entertainment "A Night of Fun and Frolic". This was a combination dance and floor show in cabaret style. The members of the committee were William Welton, Lewis Pillsbury, Ray Robinson, and George Etzel.

This year the fraternity sent a delegation to the National Convention at Boston. Besides attending the convention itself the delegates also had the opportunity of going to the Boston Athletic Association indoor track meet to see Warmerdam break the pole vault record.

The members who attended were Lewis Pillsbury, George Etzel, and Ray Knight.

Several men were lost to the fraternity this year because of induction into the armed services. These were: Leslie Whittemore, Harold Spiller, Douglas Freeman, Ronald Bickford, Thomas Demers, Ray Austin, Joseph Aliberti, and George Etzel.

Twelve new members were received into the fraternity following a successful initiation period. These men were: R. Miller, R. Dolloff, R. Vail, D. Freeman, E. Carmichael, E. Gerry, H. Moore, E. Smith, W. Hodgkins, P. Quinn, E. MacDonough and A. Mitchell.

As its last function of the year the fraternity held an outing at the Proctor House, Naples.

The members were: President, A. Pecoraro; vice president, L. Pillsbury; secretary, M. Edwards; corresponding secretary, W. Welton; treasurer, R. Knight; sergeant-at-arms, W. Garland; chaplain, R. Robinson; J. Alden, J. Aliberti, R. Austin, D. Bisbee, A. Cumming, S. Curtis, G. Etzel, N. Giampetruzzi, R. Kilroy, G. Pendexter and J. Piscopo.

Kappa Delta Phi



COMMUTERS CLUB

Under the guidance of the faculty sponsor, Miss Evelyn Littlefield, the Commuters Club had a very interesting year. As in the past, its purpose was to aid the Commuters in successfully adjusting to the life of the school. Through its purchase of the radio-victrola for the recreation room, the club added much to the leisure-time activity of the students. After this purchase, the club set up plans for the complete renovation and decoration of the room. Other clubs in the school contributed money to aid them in this endeavor. During the first semester the club sponsored dances to buy records and equipment for the room. Ask Zita about the collapse of the ping-pong table. Talk to Nino about card tables and the use of them, in tying one's shoes. They did replace the records! This year the annual fall picnic, in honor of the freshmen, was held at Two Lights, Cape Elizabeth. Dr. Bailey took his binoculars and many of the members discovered the lightship. Early in the spring the club sponsored its annual dance. This year it was a Victory Dance under the

chairmanship of Frank Catir. The floor-show was something that everyone should remember. Phil Kimball in that satin gown, Paul Quinn in Kay's white net dress, and Bill Welton with his fancy steps. Once again the club was a social success. Ice cream sales, entertainment of basketball men, contributions to Red Cross and Bundles for Britain, and meetings every other Wednesday kept the members busy. The Commuters Club is proud of the following comment: "Whenever I find a group full of ideas and ambition, I always find that it is composed of Commuters". Catherine Flaherty served as President; Joanne Ashby, Vice President; and Lona Fogg, Secretary and Treasurer.

Members:

J. Ashby, E. Cullinan, M. Frank, H. Frank, A. Cooper, D. Baker, M. Dow, P. Supple, H. Rackliff, F. Gowen, P. Hodsdon, R. Carter, K. Welch, D. Whitten, F. Bradford, D. Bisbee, C. O'Donnell, C. Hawkes, L. Fogg, W. Turner, and E. Black.



RIDING CLUB



At the beginning of the school year twenty enthusiastic girls formed a riding club and made their equestrian debuts at Rines' Riding School, Gorham. Betty Quinn was chosen riding councilor by the Athletic Council. The club adopted some rules which would help them. They were as follows: grip with your knees if you want to stay on; a bridle in the hand is worth two in the ditch; and if you slouch—why shouldn't your horse? The Club met every Thursday afternoon. The Rines' had a club house for their riders and an indoor riding ring which was used in case of bad weather.

The first few lessons were devoted to ring instruction. The girls learned how to mount and dismount, to hold their reins correctly and to post. After their first lesson many of the girls were walking to class carrying pillows and moaning about their lameness. Some wondered if it was all worth the effort. But the next week found them back for another stab at mastering riding. As soon as the girls post to a trot they were allowed to ride on the bridle paths which wound through the woods and along the river. By the end

of the season each girl had her own favorite horse which she enjoyed riding the most. Along the trails they rode shouting and singing. There's Miss Murley on Rocket, Miss Wood on Dan, and confidently Dan was the tallest horse in the stable and a step ladder was used in order to mount him.

During the winter months the club rode in the indoor ring where special instruction in horsemanship was given. After the rides cocoa and cookies were served in the clubhouse.

The spring season was welcomed in by a supper ride at which all the members participated. This was the best time of the year to ride, the girls said.

The members were Dorothy Baker, Patty Barron, Peggy Barron, Eleanor Barton, Esther Bennett, Phyllis Cole, Virginia Coyne, Katherine Flaherty, Pearl Hartt, Barbara Joyce, Mary MacEacharn, Elizabeth Mitchell, Mabel Murphy, Ellen Rowe, Helen Slosberg. The faculty members were Miss Dahl, Miss Flint, Miss Murley and Miss Wood.

W. A. A. BOARD



OFFICERS

<i>President</i>	RUTH BISHOP
<i>Vice President</i>	VIRGINIA DAVIS
<i>Secretary</i>	GERRY WHITE
<i>Treasurer</i>	BETTY LEACH

This board met early in the fall for the purpose of choosing new councillors. They met every other Wednesday evening.

Each girl on this board had charge of one sport. Besides this they sponsored Fall Sports Day in September and May Play Day in the spring when the girls from Farmington were the guests. They also sponsored several of the dances in Center after the basketball games. They also continued the Campfire Training

course this year. The board also furnished the bandages for Miss Flint's First Aid Course.

Quarterly sports were carried on with the following as the councillors: Hockey, Virginia Clark; Campfire, Louise McLain and Dorothy Whitten; Softball, Frances Day; Volleyball, Pearl Hartt; Archery, Ellen Roberts; Skiing, Ruth Alden; Tennis, Phyllis Hodsdon and Laura Meserve; Badminton, Josephine Irving; Riding, Betty Quinn; Games, Mary Dodge; Outing Club, Jane Clark; Basketball, Phyllis Dyer; and Skating, Shirley Stanley.

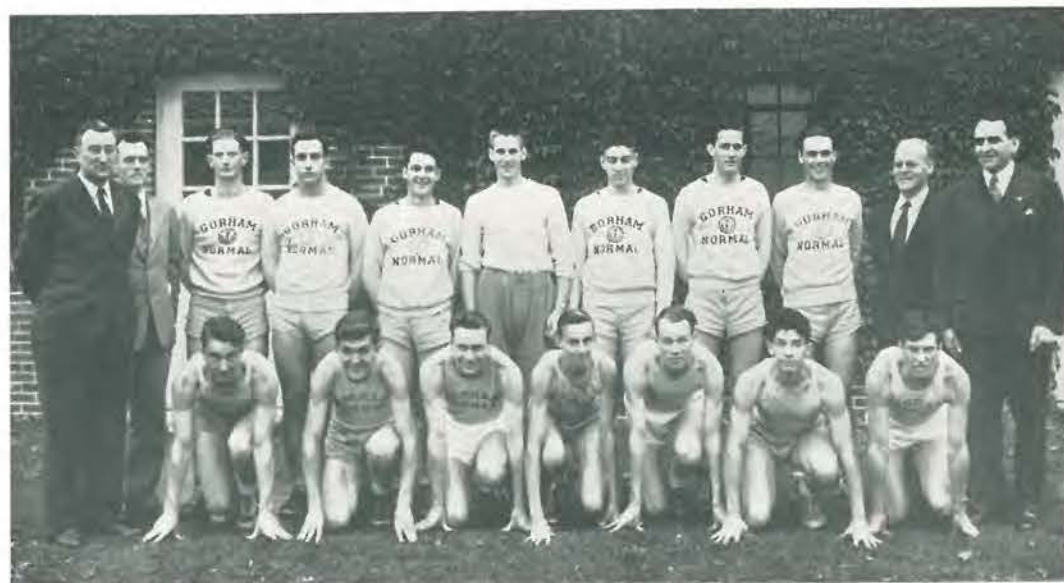
The class representatives were: Lucie Dickens, and Edith Thayer.



MEN'S ATHLETICS

CROSS COUNTRY

Early in the second week of school a group of hopeful young men gathered in Russell Hall men's locker room in answer to Mr. Packard's call for cross country training. Veterans on the squad included Ed Hodgkins, Fred Jeffery, Alec Cumming, Willis Hancock, and additions to the squad were Ronnie Bickford, Eddie Hadlock, Alton Benson, Pete Leavitt, Gene Smith, Dick Miller and Bob Dolloff.



After three weeks of hard training on our rugged course, the day came for our first meet which was with Hebron Academy. Although Hebron scored the first two places, the Gorham runners were bunched directly behind them to take the meet 25 to 23.

Over the exceedingly hilly and crooked course at Bridgton our runners nearly had the victory snatched from them. Mendez from Bridgton took first with an amazing burst of speed at the finish. He was followed closely by Hodgkins of Gorham, second, and another Bridgton man was third just beating out Jeffery and Smith.

A week later the students held a rally and gave the team a big send-off to Maine

for a run with the powerful Frosh team. Due to the fact that two of our best runners were taken sick on the course, the team did not do so well as it might have, therefore losing the meet by a close score of 24 to 33.

Bridgton came here with blood in their eyes and revenge in their hearts for the last run of the season. The team wishes to commend Fred Jeffery on his perform-

ance in this race. Although so sick he could hardly speak before the race, nevertheless, he ran and finished third. The rest of the boys backed him up well bringing a victory of 19 to 43 to the Green and White.

One J. V. run was held with Portland High School, always a powerful team. Portland, paced by Beking and Orlando, took the run by a perfect score.

Winners of Varsity G's this year were: Co-captains Fred Jeffery and Alec Cumming, Ed Hodgkins, Gene Smith, Ronnie Bickford, Benny Benson and Willis Hancock.

BASKETBALL



Gorham Normal School under its new coach, "Spin" Hill started off the basketball season with a bang, as a spirited team handed a strong Alumni combine a 49 to 47 setback. The season opened with Staton Curtis at center, Bob Vail at right forward, Tony Pecoraro at left forward, Red Austin at left guard, and Lornie Arnold at right guard. Other players on the varsity included: Doug Freeman, Ronnie Bickford, Orlando Aliberti, Pete Leavitt, Don Pierce, Alec Cumming, and Ed Hadlock.

Although starting off the season well with three consecutive wins, the boys couldn't seem to break the spell that forced them into the losing column about midway through the season. However, playing almost universally against stronger and larger teams their spirit and sportsmanship is an end in itself.

At the end of the season Ray Austin was elected honorary captain of the varsity five and Alec Cumming captain of the J. V. squad. Letters for the season were awarded to: Red Austin, Lornie Arnold, Staton Curtis, Tony Pecoraro, Bob Vail, Pete Leavitt, Alec Cumming, Don Pierce, Doug Freeman, and manager, Dick Neal. A large part of the

squad consisted of underclassmen who should be the backbone of next year's team. These are Frank Vaitones, Phil Kimball, Ed McDonough, Joe Gerry, Dick Kilroy, John Burke, Red Black, and Audry Martin.

A summary of the conference games is as follows:

Gorham 34, Salem 23; Gorham 25, Keene 43; Gorham 31, R. I. C. E. 58; Gorham 30, Hyannis 52; Gorham 58, Farmington 36; Gorham 37, R. I. C. E. 38; Gorham 36, Hyannis 61; Gorham 32, Salem 39; Gorham 31, New Britain 42; Gorham 36, Willimantic 56; Gorham 44, Farmington 36; Gorham 32, Salem 39.

Varsity non-conference games resulted as follows:

Gorham 49, Alumni 47; Gorham 26, Madawaska 23; Gorham 18, Y. M. C. A. 39; Gorham 38, Boys' Club Varsity 38; Gorham 36, St. L. A. C. 28.

J. V. scores were as follows:

Gorham 23, Gorham High 21; Gorham 22, Freeport 15; Gorham 36, N. Y. A. 24; Gorham 31, P. B. C. 33; Gorham 28, Freeport 21; Gorham 20, Falmouth 16; Gorham 26, Porter 25; Gorham 24, Comets 39.

BASEBALL



1941

In the spring of 1941 Gorham was destined to have one of the most successful baseball teams it had seen for a number of years. Coach Jensen was favored with a strong aggregation of veterans that lost the conference title only to New Britain Teacher's College.

The first game was on April 30, when Gorham tried its mettle against Salem. Tony Pecoraro was on the mound for the opener with Bill Van Blaricum behind the plate. Nine Salem men failed to connect as Tony heaved the little white pellet by them into Bill's big mit. The team had little difficulty downing the Salemites 7 to 2.

The Green and White next invaded Keene, where Gorham's big guns captured a 19 to 5 victory. Sluggers Freeman and Austin connected for a homer and a three bagger respectively.

New Britain came to Gorham with a strong team for the third game. Although the home boys lost the hard-fought contest, Ray Austin proved outstanding with a three base hit and thirteen strike outs to his credit.

Gorham played host to Keene on May 14, but once more our boys proved su-

perior and the invaders went back to New Hampshire on the short end of a 14 to 4 score.

Gorham and Salem met for the second time a short time later when, as before, Salem went down to defeat—6 to 4.

The only double header was played with Hyannis. In the first game Gorham lost an 8 to 3 decision, but in the second game the Jensen men gained revenge by setting Hyannis back 5 to 3 as Ray Austin hit a timely triple.

The one J. V. game was with Gorham High School. The school boys took the game 4 to 1.

Credit for a commendable ball club should be paid Manager Wiggin, Coach Jensen, and to the players. Varsity players were: pitchers, Austin, Pecoraro, Coyne, and Hadlock; catchers, Leavitt and Van Blaricum; infield, Arnold, Freeman, Castelucci, and Crockett; outfielders, Welton, Mayberry, and Walker.

1942

Due to lack of transportation facilities, the Men's Athletic Association voted to cancel a 5 game schedule and to establish an intramural sports program this spring.

TRACK

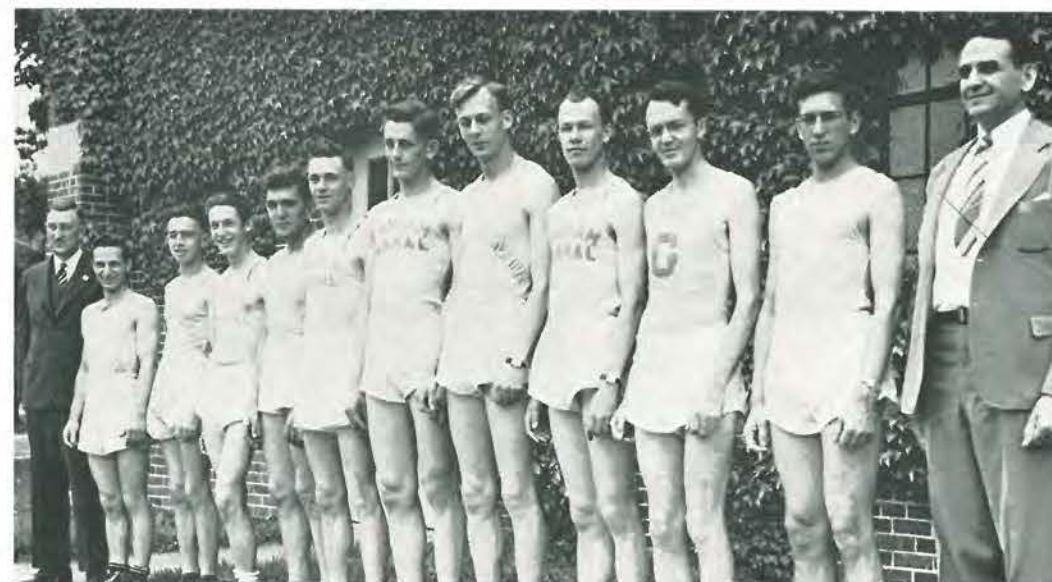
In an effort to expand the field of athletics in order to foster greater participation in sports, track was added to Gorham's list of major sports in the spring of 1941. Dr. Bailey, Mr. Bassett, and Mr. Packard consented to handle the teaching end and in March the call went out for candidates for Gorham's first official track team. A schedule of meets was arranged with other interested schools in the New England Teacher's College Conference.

In the absence of a school athletic field, arrangements were made to use the track at the Fair Grounds for training the runners. As Gorham High School was starting a track team at the same time, the two schools cooperated in the construction of the jumping and vaulting pits and both teams trained together in these events.

The first meet was held at Gorham. It was a triangular meet between Gorham, R. I. C. E. and Farmington. The half-mile track was an advantage to the Gorham runners as the visitors were lost by the time they reached the back stretch and

Gorham won with Farmington second and R. I. C. E. third. Two weeks later the team journeyed to Farmington and here Gorham was taken into camp by the Red and White. The final meet of the regular season was the New England Teacher's College Conference meet at New Britain, Conn. The teams entered were New Britain, R. I. C. E., Farmington, Hyannis, and Gorham. Gorham placed fourth in this meet only eight points behind the winning New Britain team. In October, after school reopened a fall meet was held with R. I. C. E. at Gorham. This meet was neck and neck all the way until the relay which Gorham won, giving the victory of 55-52 to Gorham.

The members of the 1941 squad were: A. Cumming, captain; E. Hodgkins, F. Jeffery, F. Griffith, J. Alden, Ray Knight, W. Hancock, M. Edwards, O. Durgin, D. Bisbee, L. Eaton, G. Mayberry, D. Pierce, D. Freeman, R. Bickford, R. Miller, F. Vaitones, and G. Smith.



WOMEN'S ATHLETICS



Archery

Basketball

Baseball

Outing Club

OUTING CLUB

President JANE CLARK
Vice President MILDRED JACKSON
Secretary-Treasurer NANCY GOODWIN
Hiking Councillor LILLIAN SAVAGE

The Outing Club this year was one of the most active clubs. They spent their time on the road with two official hikes each week, but many were not satisfied with only two. In the early fall they went on a supper hike on the Fort Hill road at which time the Freshmen were initiated. They also went on an early morning hike, cooking their own breakfast. At Christmas time they went into the woods and got a tree for the dormitory besides getting enough greenery to make a wreath for Robie Hall door and to decorate East Hall dining room. In the spring the group went on an all day hike to Little River.

They were not only concerned with hiking but with social events as well. They

sponsored the Winter Carnival and Dance in January of which Virginia Davis was elected Queen. Due to the weather they could not hold the carnival, but the dance was a big success. On March 17 they presented an original St. Patrick's Day program in chapel. Among other things they sold Gorham pencils to raise money.

The members of this club were: E. Appleton, A. Birney, M. Burnell, M. Butler, J. Clark, F. Coombs, B. Dalton, L. Dickens, M. Doe, B. Emery, J. Epstein, A. Folsom, E. Goddard, N. Goodwin, R. Greene, K. Huston, M. Jagger, L. Johnston, E. Kimball, P. Kirby, E. Lee, E. Magure, M. Merrill, A. Montebello, J. O'Mara, L. Poli, L. Savage, R. Swett, E. Thayer, C. Welch, B. White, M. Jackson, E. Staples, J. Cleaves, B. Stults, P. Morse.



WOMEN'S



Badminton

Again this year we have followed the customary schedule of athletic participation for women. Hockey was the activity for the first quarter of the school year. Very soon after classes had become routine and the poor bewildered freshmen knew at least where their rooms were, Virginia Clark, hockey councillor, gave the first call for enthusiasts of this game. After the organizational meeting, games were played each Tuesday and Thursday on the hockey field. The freshmen and the newcomers to the game soon realized that when Miss Flint made a decision, it wasn't to be reversed by mere bickering.

Throughout the first quarter tennis players were very busy. It took the girls quite a while to decide that it might be fun to try a girl's singles tournament rather than playing just mixed doubles. Phyllis Cole had to battle her way to the championship by defeating Connie Cullinan (the middle member of the Cullinan family) in the semi-finals. This fall tennis tournament was the most successful tournament of the year. Phyllis Hodsdon was fall tennis councillor.

Those members of the school who found the tennis courts too busy, and the hockey field too confusing on Tuesday and Thursday headed in that direction the other nights of the week, in order

to practice and participate in shooting for Columbia Rounds. There were not many girls out, but this spring we noticed that Adeline Sugg and Doris Colley had more than improved. Ruth Bishop and Ellen Roberts, the councillor, showed us how four years' practice increases proficiency in hitting the bull's eye even at one hundred yards. In the spring the warm weather induced a few of the male members of the school to compete with the women. They waged their own private battle with Miss Flint. We didn't ask the boys how they came out. It would have been too embarrassing.

The first week of the second quarter Phyllis Dyer announced that basketball practice had begun. Basketball calls out more commuters than some of the other sports. Lona Fogg, Dot Ball, Dot Cole, Ruth Carter, the Cullinans and others added to the girls from the dormitory. All the classes contributed good players to make this quarter one of the most active, as far as women's athletics was concerned. Lona Fogg and Doris Whitely played substantial games for the seniors. The juniors were blessed with F. Andrews, their captain, and F. Day. The sophomores were more than favored for they could depend upon Pearl Hartt and Virginia Davis. As for the Fresh-

ATHLETICS

men the school would like to see them win the class games next year; they're all good, Lucie Dickens and Ruth Carter particularly. The Sophomore class won the class games this year although the fourth year seniors tried as hard as they knew how. They borrowed as many members from other classes as they could. Even with that help they lost. This year the Green and White basketball games were not played.

"Dr. Bailey, members of the faculty, and fellow students", said Pearl Hartt before the third quarter had had a chance to get started, "for all those interested in volleyball there will be a meeting in the gym this afternoon at 3:30: Please be prompt. Thank you". There were not many out for this sport but that made it all the more interesting for those who did come out. Numerals were awarded to those members at the spring award assembly. For those of you who didn't get to play any volleyball this year, you missed the artificial flower awards from her novelty shop which Miss Flint presented to each winning team. The Green team captained by Betty Leach defeated the White team under the leadership of Virginia Clark for the Green and White banner.

After spring vacation softball practice began. Frannie Day, the councillor, started practice in the gym while waiting for the ground in the hockey field to dry out. Enough girls came out so that there were four good teams and all of the field was in use each night. The cancellation of the men's spring athletic programs made it easier for the girls to play postponed games. It also gave them a gallery to play to. It was a little bit harder for Betty Leach to pitch to those lefties on the other team while Ray and Tony were watching, but it was fun. The girls who played softball were very grateful to the school for all the equipment that had been provided; they had only one complaint to make: the field was not large enough. Hitters like Frannie Day and Connie Cullinan need three fields, as all the fielders know after having scrambled into the

garden patches and out on High Street while a home run was being scored against their team. The freshmen, as usual, gave the upper classmen the competition needed to make this softball season one of the best that we have known.

During the year badminton took the attention of some of the commuters. Each noon came the silent battle to see who would get the racket strung with blue. Then came the cry, "Are there any good birdies left?" All the while two of the girls were struggling with the nets. At exactly twenty-five minutes of one the games began. Phyllis Hodsdon, last year's champ, won her fair share of the games. Occasionally some of the others won, making everyone satisfied. In March the Portland Junior College badminton players invited the Gorham girls to a badminton tea. Those girls who went, came back very pleased with their reception there. It was rumored about that the Gorham doubles team (Irving and McGinty) defeated the best doubles team that Portland Junior had to offer, three games in a row. Later in the spring Gorham entertained Portland Junior College, Westbrook Junior College and Nasson College for an afternoon of badminton and other games. Jo Irving was councillor for the year.

There were several unorganized sports that demanded the attention of some of the girls in the school. Those of you who frequented the recreation room know this. Betty Frost can line up those shots as well, shall we say as Mr. Hill, Ruth Bishop proved that the female can play as well as the male. Louise Heighe upheld the women on the ping-pong table. Kay O'Donnell and Mary Gorham wield a mean paddle (practice, no doubt).

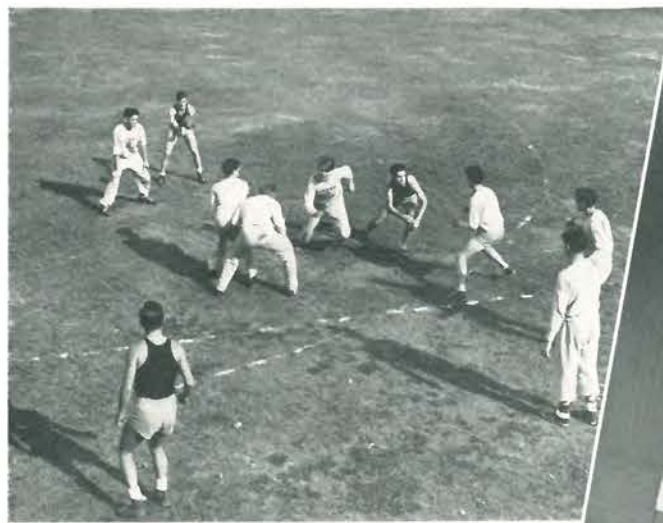
This year the women were working for points for the intramural teams as well as the men. The intramural program did not work out as well as expected but with the curtailment of men's athletics and the emphasis being placed on women's intramural work this program should find added support during the coming year.

SNAPSHOTS

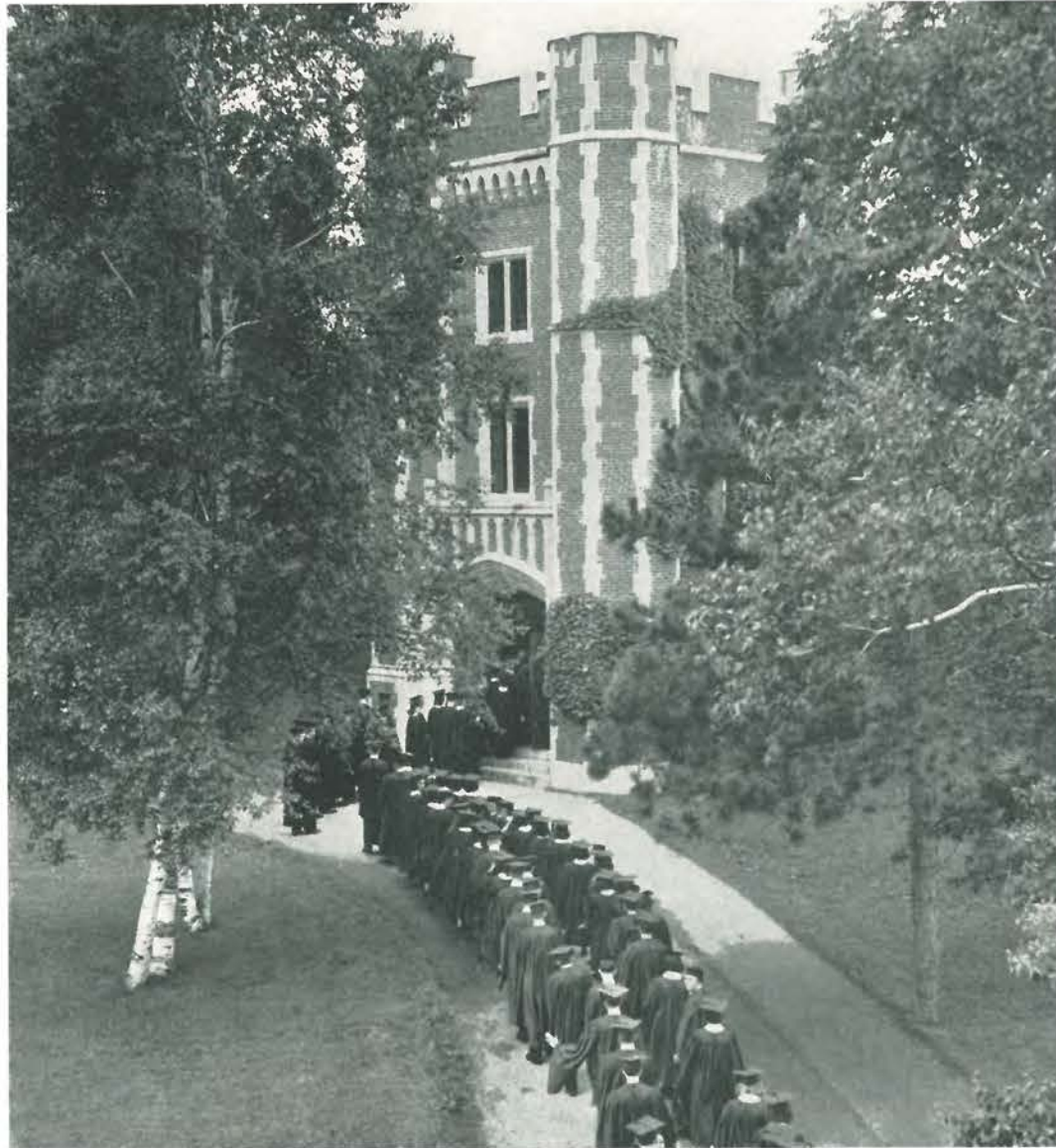


East Hall









Senior Procession Russell Hall

CLASS ODE

Words and Music by MARY LOU STUART

Through many full and carefree years
 We've reached this day at last,
 To sing our final cadence and
 Preserve our memories past.
 And now the scenes of bygone years
 With sadness fills each heart;
 From dear old Alma Mater's halls
 With sorrow, we depart.

So let our swelling chorus ring
 Of these the ties which bind;
 This sturdy hill, the stately pine.
 All these we leave behind.
 But friendship, faith and high ideals,
 Oh, be our guide for e'er
 And onward lead us unafraid
 To live, to love, to share.



RUTH ALDEN
 Gorham, Maine



ORLANDO J. ALIBERTI
 Portland, Maine



JOANNE ASHBY
 Portland, Maine



RAY C. AUSTIN
Sebago Lake, Maine



RUTH A. BISHOP
Portland, Maine



LAWRENCE BRIDGHAM
Gorham, Maine



EDNA A. DEARBORN
Bangor, Maine



MARY W. DODGE
Rockland, Maine



MARJORIE I. DOE
Sheepscot, Maine



JOSEPH CASTELLUCCI
Portland, Maine



OLIVE M. CONARY
Deer Isle, Maine



EILEEN M. CULLINAN
South Portland, Maine



MAURICE E. EDWARDS
Portland, Maine



GWENDOLEN A. ELWELL
Gorham, Maine



GEORGE G. ETZEL, JR.
Freeport, Maine



ALEXANDER B. CUMMING
Houlton, Maine



STATON CURTIS
Portland, Maine



RUTH E. DAVIS
Mechanic Falls, Maine



CATHERINE J. FLAHERTY
Portland, Maine



LONA FOGG
Saco, Maine



HELENA GAGNE
Lewiston, Maine



M. CATHERINE GOFF
Portland, Maine



HELEN HEEL
South Windham, Maine



OWEN F. HILL
West Buxton, Maine



ELIZABETH F. LEACH
Blue Hill, Maine



CATHERINE LEWIS
Bath, Maine



MARY A. MCGINTY
South Portland, Maine



EDWIN C. HODGKINS
Brewer, Maine



PHYLLIS HODSDON
South Portland, Maine



JOSEPHINE IRVING
Portland, Maine



MURIEL MORGAN
Gardiner, Maine



ALBERT R. MORTON
Friendship, Maine



MABEL A. MURPHY
Portland, Maine



FREDERICK JEFFERY
South Portland, Maine



EUGENE C. JORGENSEN
South Windham, Maine



NANCY LaROCHELLE
Portland, Maine



CYNTHIA E. NICHOLS
Millinocket, Maine



ANTHONY PECORARO
South Windham, Maine



BETTINA M. PILLSBURY
Limington, Maine



LEWIS A. PILLSBURY
Gorham, Maine



ELLEN L. ROBERTS
Portland, Maine



MARY L. STUART
Portland, Maine



EVELYN M. WARD
Kennebunkport, Maine



DORIS M. WHITELEY
Peaks Island, Maine



LINDLEY L. WIEDEN
New Sweden, Maine



FRANCIS H. WIGGIN
Portland, Maine



THELMA YOUNG
Portland, Maine

SENIOR CLASS

RUTH ALDEN

Junior High
F. T. A. 3; Glee Club 1, 2; Dramatic Club 2, 3, 4; W. A. A. 2, 3; Oracle 1, 2, 3; Commuter's Club 1.

ORLANDO J. ALIBERTI

Industrial Arts
Basketball 1, 2, 3, 4; Cross Country 1, 2; Baseball 1, 2; Commuter's Club 1; Kappa Delta Phi 1, 2, 3, 4; Athletic Association 1, 2, 3, 4.

JOANNE ASHBY

Junior High
F. T. A. 3; Dramatic Club 1, 2, 3, 4; Commuter's Club 2, 3, 4; Civic Committee 1; W. A. A. 1; Basketball 1; Hockey 1, 2; Softball 1.

RAY C. AUSTIN

Industrial Arts
Baseball 1, 2, 3, 4; Basketball 1, 2, 3, 4; Class President 3; Commuter's Club 1, 2, 3; Kappa Delta Phi 1, 2, 3, 4; Civic Committee 1, 2, 3, 4.

RUTH BISHOP

Kindergarten Primary
Y. W. C. A. 1, 2, 3, 4; Archery 1, 2, 3, 4; Volleyball 1, 2, 3, 4; Basketball 1, 2, 3, 4; Softball 1, 2, 3, 4; W. A. A. 3, 4; Athletic Council 4.

LAWRENCE BRIDGHAM

Junior High

JOSEPH CASTELLUCCI

Industrial Arts
Basketball 3, 4; Baseball 1, 2, 3, 4.

OLIVE M. CONARY

General
Y. W. C. A. 1; Library Club 1; Dramatics 1; Glee Club 1, 2, 3.

EILEEN M. CULLINAN

Junior High
F. T. A. 3; Oracle 1, 2, 3, 4; Commuter's Club 1, 2, 3, 4; Poetry Club 1, 2, 3, 4; Basketball 1, 2; Civic Committee 1; Softball 1, 2; W. A. A. 1, 2; Badminton 1, 2, 3.

ALEXANDER B. CUMMING

Junior High
Cross Country 1, 2, 3, 4; Basketball 2, 4; Track 3; Civic Committee 2, 3; Dramatic Club 1, 2, 3, 4; Kappa Delta Phi 1, 2, 3, 4; President 3; Glee Club 1, 2; "Green and White" Board 1, 2; Oracle 4; Athletic Council 4; Vice President 4; N. Y. Convention 4.

STATON R. CURTIS

Junior High
Basketball 1, 2, 3, 4; Glee Club 1, 2, 3, 4; Baseball 1, 2; Kappa Delta Phi 1, 2, 3, 4; Operetta 1.

RUTH E. DAVIS

General
Hockey 1, 2; Volleyball 1; Softball 1, 2, 3; Basketball 1, 2, 3; W. A. A. 2, 3; Y. W. C. A. 1, 2, 3, 4; Vice President 3; President 4; Civic Committee 3, 4; Outing Club 1; Historical Pageant 2.

EDNA A. DEARBORN

General
Y. W. C. A. 3, 4; Glee Club 3, 4; Civic Committee 4; Back-to-Gorham Day Chairman 4; House Committee 3; President 3; Operetta 4; Citizenship Committee 4.

MARY W. DODGE

Junior High
Glee Club 1, 2, 3, 4; Operetta 2, 4; W. A. A. 4; Y. W. C. A. 1, 2, 3, 4; Outing Club 1, 2; House Committee 4; Entertainment Committee 4.

MARJORIE DOE

Junior High
Basketball 1, 2, 3, 4; Archery 1, 2; Dramatic Club 1, 2; Outing Club 1, 2, 3, 4; President 2, 3; Glee Club 3, 4; Operetta 4; House Committee 3, 4; W. A. A. 2, 3; Y. W. C. A. 1, 2, 3, 4; "Green and White" Board 2.

MAURICE E. EDWARDS

Junior High
Glee Club 1, 2, 3; Oracle 1, 2, 3, 4; Dramatic Club 1, 2, 3, 4; Kappa Delta Phi 2, 3, 4; Secretary 4; Baseball 1, 2; Y. M. C. A. 2, 3; Track 3, 4; Entertainment Committee 2, 3.

GWENDOLEN A. ELWELL

General
F. T. A. 4.

GEORGE G. ETZEL, JR.

Junior High
Basketball 1, 2; Baseball 1, 2; Glee Club 1, 2, 3; Kappa Delta Phi 1, 2, 3, 4; Civic Committee 4.

CATHERINE J. FLAHERTY

Junior High
F. T. A. 4; Dancing Councillor 2, 3; Representative to Wellesley 3; Tennis 1, 2, 3, 4; Dramatic Club 2, 3, 4; Commuter's Club 1, 2, 3, 4; President 4; "Green and White" Board 2, 3; Editor 3.

LONA FOGG

General

Commuter's Club 1, 2, 3, 4; Secretary-Treasurer 4; F. T. A. 4; Campfire 4; Tennis 1, 2, 3; Basketball 1, 2, 3, 4; Softball 1, 2, 3, 4; Badminton 4.

HELENA M. GAGNE

General

Outing Club 1, 2; Poetry Club 1, 2, 3, 4; Volleyball 1, 3; Tennis 4; W. A. A. 2; Dramatic Club 1; Softball 1, 3; Oracle Board 4; "Green and White" Board 4.

M. CATHERINE GOFF

General

Secretary of Class 1; Commuter's Club 1, 2, 3, 4; F. T. A. 4; Glee Club 4; Operetta 4.

HELEN HEEL

Junior High

Orchestra 1, 2, 3, 4; Glee Club 1, 2, 3, 4; Poetry Club 2, 3, 4; Commuter's Club 2, 3, 4; F. T. A. 4.

OWEN F. HILL

Junior High

Basketball 1; Glee Club 1, 2, 3, 4; Alpha Lambda Beta 1, 2, 3, 4; Operetta 2, 4.

EDWIN C. HODGKINS

Industrial Arts

Cross Country 1, 2, 3, 4; Track 3, 4; Y. W. C. A. 1, 2, 3, 4; "Green and White" Board 3, 4; Civic Committee 3, 4; Alpha Lambda Beta 1, 2, 3, 4.

PHYLLIS HODSDON

Kindergarten Primary

Badminton 1, 2, 3, 4; Softball 1, 2; Tennis 1, 2; Archery 1, 2; Basketball 4; Dramatic Club 3, 4; F. T. A. 4; W. A. A. 3, 4; Commuter's Club 1, 2, 3, 4.

JOSEPHINE IRVING

Junior High

Badminton 1, 2, 3, 4; Commuter's Club 1, 2, 3, 4; Poetry Club 4; W. A. A. 4; "Green and White" Board 4; F. T. A. 4; Softball 1, 2; Archery 3, 4.

FRED JEFFERY

Junior High

Cross Country 1, 2, 3, 4; Track 2, 3; Operetta 2, 4; Historical Pageant 2; Alpha Lambda Beta 1, 2, 3, 4; President 4; Glee Club 1, 2, 3, 4; Commuter's Club 1; Athletic Association 1, 2, 3, 4.

EUGENE JORGENSEN

Junior High

F. T. A. 4; Athletic Association 1, 2, 3, 4; Commuter's Club 1, 2, 3, 4; Glee Club 1, 2; Operetta 2; Alpha Lambda Beta 1, 2, 3, 4; Class Treasurer 4.

NANCY LA ROCHELLE

General

Commuter's Club 1, 2, 3, 4; F. T. A. 4; Badminton 4.

ELIZABETH LEACH

General

Civic Committee 3, 4; President 4; Oracle 2, 3; F. T. A. 4; W. A. A. 2, 3, 4; Vice President 2; President 3; Treasurer 4; Outing Club 1, 2, 3; N. Y. Delegate 3; Y. W. C. A. 1, 2, 3, 4; Cabinet 2, 3, 4; Athletic Council 3; Baseball 1, 2, 3, 4; Basketball 1, 2, 4; Hockey 2, 3, 4; Volleyball 1, 2, 3, 4; May Ball Dance Committee 1; Superintendent's Day Committee 3; Chairman 4; Fall Sports Day Committee 3; Winter Carnival Committee 2, 3; International Discussion Group 3; Cheerleading 1, 2, 3; Head Cheerleader 2, 3.

CATHERINE LEWIS

General

Poetry Club 1, 2, 3, 4; Outing Club 1, 2; Entertainment Committee 1, 2, 3; N. Y. Convention Delegate 2; House Committee 2, 3; Vice President 3; Basketball 1, 2; Softball 1; Oracle Staff 4; Y. W. C. A. 1, 2, 3, 4.

MARY A. MCGINTY

Junior High

F. T. A. 4; Commuter's Club 1, 2, 3, 4; "Green and White" Board 2, 3, 4; Poetry Club 2, 3, 4; Baseball 2; Badminton 1, 2, 3, 4; Tennis 2; Secretary of Class 2.

MURIEL MORGAN

General

F. T. A. 4.

ALBERT R. MORTON

Junior High

Basketball 1, 2, 3; Glee Club 1, 2, 3, 4; Alpha Lambda Beta 1, 2, 3, 4; F. T. A. 4; Commuter's Club 1; Interclass Council 3, 4; Athletic Association 1, 2, 3, 4; Delegate to Boston Convention 4.

MABEL A. MURPHY

Junior High

Library Club 1, 2, 3; President 2, 3; Dramatic Club 1, 2, 3; Oracle 1, 2, 3, 4; Editor 4; International Discussion Group 2, 3.

CYNTHIA E. NICHOLS

General

Glee Club 4; Transfer; Field Science 2; Glee Club 1, 2, 3; Outing Club 1, 2; Modern Authors 2; Science Club 1, 2.

ANTHONY PECORARO

Junior High

Kappa Delta Phi 1, 2, 3, 4; President 4; Glee Club 1, 2; Basketball 2, 3, 4; Baseball 1, 2, 3, 4; Civic Committee 4; Operetta 4.

BETTINA M. PILLSBURY

General

Dramatic Club 1, 2, 3, 4; Plays 2, 3, 4; Vice President 3; Secretary 4; Y. W. C. A. 1, 2, 3, 4; Vice President 3; Cabinet 3, 4; Outing Club 1, 2; Glee Club 1, 2, 3, 4; Operetta 4; Softball 3; Poetry Club 2, 3, 4; International Discussion Group 3.

LEWIS A. PILLSBURY

Junior High

Glee Club 1, 2, 3, 4; Class V. President 3; President of Class 4; Kappa Delta Phi 1, 2, 3, 4; V. President 4; F. T. A. 4; Civic Committee 3, 4.

ELLEN ROBERTS

Kindergarten Primary

Outing Club 1, 2; Y. W. C. A. 1, 2, 3, 4; Archery 1, 2, 3, 4; Volley Ball 1, 2, 3; Oracle 4; W. A. A. 4.

MARY LOU STEWART

Junior High

Orchestra 1, 2, 3, 4; Glee Club 1, 2, 3, 4; F. T. A. 4; Commuter's Club 1, 2, 3.

EVELYN WARD

General

Glee Club 1, 2, 3, 4; Dramatic Club 1, 2, 3, 4; Y. W. C. A. 1, 2, 3, 4; Poetry Club 2, 3, 4; Basketball 1, 2, 3, 4; House Committee 2, 3, 4; Operetta 1, 2, 3, 4; Outing Club 1, 2; Play 1, 2, 4; Volley Ball 1.

DORIS WHITELEY

General

Glee Club 1, 2, 3, 4; Poetry Club 2, 3, 4; Outing Club 1; President House Committee 4; W. A. A. 3; Vice President of Class 3; Operetta 2, 3, 4; Y. W. C. A. 1, 2, 3, 4; Archery 1; Basketball 1, 2, 3, 4; Volleyball 1, 2, 3; Softball 1, 2, 3; Civic Committee 1, 2, 3.

LINDLEY WIEDEN

Junior High

Glee Club 4; Operetta 4; Transfer.

H. FRANCIS WIGGIN

Junior High

Orchestra 1, 2, 3, 4; Band 2, 3, 4; Civic Committee 4; Alpha Lambda Beta 1, 2, 3, 4; Oracle 4; F. T. A. 4.

THELMA YOUNG

Kindergarten Primary

Glee Club 1, 2, 3, 4; Art Club 1; Commuter's Club 1, 2; Oracle Staff 4; Secretary of House Committee 4; Y. W. C. A. 4; Archery 1, 2; F. T. A. 4.



GORDON L. ALDEN
Portland, Maine



RUTH ALLEY
South Windham, Maine



FLORENCE ANDREWS
Auburn, Maine



DORIS ARMSTRONG
Bath, Maine



FRANK CATIR
Portland, Maine



MARION CHUTE
Norway, Maine



JANE CLARK
Wells, Maine



DOROTHY COLE
Portland, Maine



LAWRENCE ARNOLD
Auburn, Maine



DOROTHY BALL
South Portland, Maine



MURIEL H. BARBARICK
South Portland, Maine



CHARLES BEECHER
Portland, Maine



FLORENCE COOMBS
Brunswick, Maine



CONSTANCE CULLINAN
South Portland, Maine



JULIA M. DAGGETT
Ashland, Maine



CAROL G. DAVIS
Cape Elizabeth, Maine



HOWARD BENSON
Oakland, Maine



PRISCILLA BENT
Kezar Falls, Maine



DONALD BISBEE
Portland, Maine



MARION G. BRAGDON
Norway, Maine



FRANCES DAY
Saco, Maine



PRISCILLA DeCOSTER
Pownal, Maine



FLORENCE DEEGAN
Bethel, Maine



ALICE DELANO
Portland, Maine



RUTH BROWN
West Buxton, Maine



MARY BURNELL
Cumberland Center, Maine



NORMA BUTTERFIELD
Camden, Maine



DONALD CAMERON
Gorham, Maine



ANNE DOUGLAS
South Portland, Maine



CHARLOTTE M. DOUGLASS
Yarmouth, Maine



OWEN DURGIN
Portland, Maine



PHYLLIS L. DYER
Kennebunk, Maine



LYNEDON EATON
Portland, Maine



ANNIE FOLSOM
Monmouth, Maine



ELIZABETH M. FROST
Sebago Lake, Maine



WAYNE M. GARLAND
Bangor, Maine



ARLENE M. HOWARD
Houlton, Maine



PAULINE A. JOHNSON
Hollis Center, Maine



LENA JOHNSTON
Waldoboro, Maine



EVELYN M. JONES
South China, Maine



NINO J. GIAMPETRUZZI
Portland, Maine



MARY GORHAM
Portland, Maine



ELEANOR E. GOULD
Alfred, Maine



VIRGINIA R. HALL
Portland, Maine



EVELYN E. KIMBALL
Lockes Mills, Maine



M. A. REBECCA KINNEY
Belfast, Maine



GERTRUDE A. KNAPP
Yarmouth, Maine



RAYMOND C. KNIGHT
Gorham, Maine



WILLIS K. HANCOCK
Portland, Maine



CATHERINE HANSON
Rumford, Maine



CHARLOTTE HAWKES
South Windham, Maine



GENEVA HAWKES
Portland, Maine



JOSEPH L. LEAVITT
Rensselaer, N. Y.



FRANCES LIBBY
Westbrook, Maine



PEARL LIBBY
Gorham, Maine



MARY E. MacEACHARN
East Millinocket, Maine



KENNETH M. HAWKES
South Windham, Maine



MARY L. HAWKES
Gorham, Maine



LOUISE R. HEIGHE
Portland, Maine



SARAH HILL
East Sebago, Maine



GERALD E. MAYBERRY
Portland, Maine



RUTH McDONOUGH
Portland, Maine



LORRAINE MCGEE
Lewiston, Maine



GERALDINE G. McGRAIL
Gardiner, Maine



EDNA L. MERITHEW
Searsport, Maine



LAURA MESERVE
Jefferson, Maine



JUNE MILES
Portland, Maine



ELIZABETH G. MITCHELL
Winchester, Mass.



HELEN A. SLOSBERG
Augusta, Maine



MARY R. SNELL
Gorham, Maine



EMILY M. SPROUL
South Bristol, Maine



SHIRLEY M. STANLEY
Rockland, Maine



RICHARD NEAL
Friendship, Maine



IDA C. NELSON
South Portland, Maine



CATHERINE O'DONNELL
Portland, Maine



SALLY F. O'TOOLE
Portland, Maine



ESTHER E. STAPLES
Turner, Maine



EDITH A. THAYER
Searsport, Maine



BARBARA THOMAS
West Buxton, Maine



ROBERT M. VAUGHN
Cumberland Center, Maine



JUANITA PARKS
Gloucester, Mass.



CAROLYN F. PATRIQUIN
Lamoine, Maine



GEORGE E. PENDEXTER
Sebago Lake, Maine



LUCY M. POLI
Biddeford, Maine



ALBERT D. WAKEFIELD
Houlton, Maine



CHRISTINE D. WELCH
North Berwick, Maine



KATHLEEN R. WELCH
Westbrook, Maine



WILLIAM WELTON
Winthrop, Mass.



BETTY QUINN
Portland, Maine



MARY E. RAYNES
Kittery Point, Maine



OLIVE L. RILEY
Kittery, Maine



ALICE M. SEAWARD
Kittery Point, Maine



BETTY WHITE
Topsham, Maine



GERALDINE S. WHITE
Island Falls, Maine



DOROTHY WHITTEN
Portland, Maine



RITA M. WING
Gorham, Maine

JUNIOR CLASS

GORDON L. ALDEN

Industrial Arts
F. T. A. 3; Commuter's Club 3.

RUTH ALLEY

Junior High
F. T. A. 3; Commuter's Club 1, 2, 3; Art Club 2.

FLORENCE ANDREWS

Kindergarten Primary
F. T. A. 3; Basketball 2, 3; Captain 3; Softball 1, 2, 3; Hockey 2, 3; Outing Club 1, 2; Library Club 1; Y. W. C. A. 1, 2, 3; Poetry Club 2, 3; "Green and White" Board 2, 3; Editor 3; Orchestra 1, 2; Cheer-leader 1, 2; Winter Carnival Committee 1, 2.

DORIS E. ARMSTRONG

Junior High
F. T. A. 3; Dramatic Club 2, 3; Library Club 2, 3; Y. W. C. A. 1, 2, 3; Poetry Club 3; Entertainment Committee 3.

LAWRENCE A. ARNOLD

Junior High
Basketball 1, 2, 3; Baseball 1, 2, 3; Civic Committee 3; Alpha Lambda Beta 1, 2, 3.

DOROTHY BALL

General
Basketball 1, 2, 3; Hockey 1, 2; Tennis 1, 2, 3; Dramatic Club 3; Commuter's Club 1, 2, 3; Poetry Club 2, 3.

MURIEL H. BARBARICK

General
F. T. A. 3; Y. W. C. A. 2, 3; House Committee, summer; Orchestra, summer.

CHARLES BEECHER

Junior High (integrated)
Commuter's Club 2; Alpha Lambda Beta 1, 2, 3.

HOWARD BENSON

Industrial Arts
Glee Club 1, 2; Cross Country 1, 2, 3; Y. M. C. A. 1, 2; Alpha Lambda Beta 1, 2, 3.

PRISCILLA BENT

Junior High (integrated)
Glee Club 1, 2, 3; Y. W. C. A. 1, 2; Poetry Club 3; Basketball 1, 2.

DONALD W. BISBEE

Junior High
Commuter's Club 1, 2, 3; Kappa Delta Phi 1, 2, 3; Track 2, 3; Tennis 1, 2, 3; Softball 1, 2.

MARION G. BRAGDON

General
F. T. A. 3; Library Club 2, 3; Y. W. C. A. 1, 2, 3; Outing Club 1.

RUTH A. BROWN

Junior High
F. T. A. 3; Commuter's Club 2, 3; Art Club 1; Basketball 1.

MARY BURNELL

General
Basketball 1; Tennis 1, 2, 3; Outing Club 1, 2, 3; Y. W. C. A. 1, 2, 3; Archery 1.

PATRICK BUSSONE

Junior High (integrated)
Dramatic Club 2, 3.

NORMA BUTTERFIELD

Kindergarten Primary
Y. W. C. A. 1, 2, 3; Library Club 2, 3; Vice President 3; Glee Club 1, 2, 3; Treasurer 3; Operetta 1, 3.

DONALD CAMERON

Junior High
Cross Country 1; Baseball 1, 2, 3; Alpha Lambda Beta 1, 2, 3.

FRANK CATIR

Junior High
F. T. A. 3; Glee Club 1, 2, 3; Dramatic Club 1; Art Club 1; Alpha Lambda Beta 1, 2, 3; Commuter's Club 1, 2, 3.

MARION CHUTE

General
Y. W. C. A. 2.

JANE CLARK

General
Glee Club 1, 2, 3; Art Club 2; Outing Club 1, 2, 3; President 3; Y. W. C. A. 1, 2, 3; Campfire 2.

DOROTHY COLE

General
Basketball 1, 2, 3; Hockey 1, 2; Tennis 1; W. A. A. 2; Commuter's Club 1, 2, 3.

FLORENCE COOMBS

General
F. T. A. 3; Y. W. C. A. 1, 2, 3; Y. W. Cabinet 3; Art Club 1, 2; Library Club 1, 2; Outing Club 1, 2, 3; Hockey 1; Basketball 1, 2; Volleyball 1, 2; Archery 1.

CONSTANCE CULLINAN

General
Basketball 1, 2, 3; Hockey 1, 2; Tennis 1, 2, 3; Class Officer 2; Poetry Club 1, 2, 3; Oracle 3; Commuter's Club 1, 2, 3.

JULIA M. DAGGETT

Junior High
Dramatic Club 1, 2, 3; Glee Club 1, 2; Y. W. C. A. 1, 2, 3; Poetry Club 1, 2, 3; Class Treasurer 3; Basketball 1; Cheerleader 1, 2.

CAROL G. DAVIS

Junior High

FRANCES DAY

Kindergarten Primary
Y. W. C. A. 1, 2, 3; House Committee 3; Basketball 1, 2, 3; Softball 1, 2, 3; Secretary of Class 3; Hockey 1, 2; Volleyball 1; W. A. A. 1, 2, 3; Tennis 1, 2, 3.

E. PRISCILLA DECOSTER

Junior High
Glee Club 1, 2, 3; Operetta 1, 3; House Committee 1, 2, 3; Outing Club 1; Y. W. C. A. 1, 2.

FLORENCE E. DEEGAN

General
F. T. A. 3; Basketball 1, 2, 3; Volleyball 1, 2; Tennis 1; Softball 1, 2, 3; Y. W. C. A. 1, 2; Camera Club 3.

ALICE DELANO

Junior High
F. T. A. 3; Y. W. C. A. 1, 2, 3; Library Club 1; Outing Club 1, 2; Archery 1.

ANNE M. DOUGLAS

Junior High
F. T. A. 3; Y. W. C. A. 3; Camera Club 3; Volleyball 1.

CHARLOTTE M. DOUGLASS

General
Y. W. C. A. 1, 2; Library Club 1; Softball 1, 2, 3; Basketball 1, 2, 3; Hockey 1, 2; Skiing 1, 2, 3.

OWEN DURGIN

Junior High (integrated)
Commuter's Club 1; Y. M. C. A. 2, 3; Track 2; "Green and White" Board 2, 3; Glee Club 2, 3; Operetta 3; Orchestra 1, 2, 3.

PHYLLIS L. DYER

Kindergarten Primary
Art Club 3; Basketball 1, 2, 3; Volleyball 1, 2; Hockey 1, 2; Athletic Council 1; House Committee 1, 2; Civic Committee 1, 2, 3; W. A. A. 1, 2; Poetry Club 1, 2; Y. W. C. A. 1, 2, 3; Archery 1.

LYNEDON EATON

Junior High (integrated)
Archery 1, 2, 3; Basketball 1; Badminton 1, 2, 3; Athletic Council 1, 2, 3; Cross Country 2, 3; Track 1; Glee Club 1, 2, 3; Art Club 2, 3; Alpha Lambda Beta 1, 2, 3.

ANNIE FOLSOM

Kindergarten Primary
Basketball 1; Softball 1; Outing Club 1, 2; Y. W. C. A. 1, 2, 3.

ELIZABETH M. FROST

Junior High (integrated)
Poetry Club 1, 2, 3; Vice President 3; Glee Club 1, 2, 3; Softball 2; Commuter's Club 1, 2, 3.

WAYNE GARLAND

Industrial Arts
Basketball 1, 2; Glee Club 2, 3; Y. M. C. A. 1, 2, 3; Dramatic Club Play 3; Operetta 3; Kappa Delta Phi 1, 2, 3; Minstrel Show 2; M. A. A. 1, 2, 3.

NINO J. GIAMPETRUZZI

Junior High (integrated)
Commuter's Club 1, 2, 3; Glee Club 1, 2; Kappa Delta Phi 1, 2, 3; Track 2.

MARY M. GORHAM

General
Commuter's Club 1, 2, 3; Tennis 1, 2, 3; Basketball 1, 2; Softball 1, 2.

ELEANOR E. GOULD

General
Glee Club 1, 2; Library Club 1; Poetry Club 1, 2, 3; Y. W. C. A. 1, 2, 3; Y. W. C. A. Cabinet 2; Softball 2.

VIRGINIA HALL

Junior High
Glee Club Accompanist 1, 2, 3; President 3; Orchestra 1, 2, 3; Civic Committee 2, 3; Commuter's Club 1, 2, 3; F. T. A. 3; N. Y. Convention Delegate 3; Operetta 1, 3; Chapel Pianist 3.

WILLIS K. HANCOCK

Industrial Arts
Cross Country 1, 2, 3; Track 1; Baseball 1; Alpha Lambda Beta 1, 2, 3.

CATHERINE HANSON

General
Glee Club 1, 2, 3; Operetta 1, 3; Poetry Club 1, 2, 3; Outing Club 1, 2; May Ball Committee 1, 2; Oracle 3.

CHARLOTTE HAWKES

General
F. T. A. 3; Glee Club 2, 3; Commuter's Club 1, 2, 3; Art Club 2; Basketball 1.

GENEVA HAWKES

General
F. T. A. 3; "Green and White" Board 1, 2, 3; Commuter's Club 1, 2; Poetry Club 1, 2, 3; Basketball 1.

KENNETH HAWKES

Industrial Arts
Alpha Lambda Beta 1, 2, 3; Orchestra 1, 2, 3; Glee Club 1, 2, 3; Operetta 3.

MARY HAWKES

Kindergarten Primary
F. T. A. 3; Transferred; Glee Club 1, 2; Dramatic Club 1, 2; Class Treasurer 2.

LOUISE R. HEIGHE

Junior High
Hockey 1; Basketball 1; Athletic Board 1.

SARAH HILL

General
Outing Club 1, 2; Y. W. C. A. 1, 2; Hockey 1; Tennis 1.

ARLENE HOWARD

Junior High
Transfer—Dramatic Club 3; F. T. A. 3; Y. W. C. A. 3; Glee Club 1, 2; Home Ec. 2; Art Club 1; English Club 2; Student Christian Association 1, 2.

PAULINE A. JOHNSON

General
Oracle Staff 3; Archery 1; Badminton 1;
Outing Club 1; Commuter's Club 1; Art
Club 3.

LENA JOHNSTON

General
F. T. A. 3; Y. W. C. A. 1, 2; Outing Club
1, 2; Art Club 1; Library Club 1.

EVELYN M. JONES

Kindergarten Primary
F. T. A. 3; Transferred; Glee Club 1, 2;
Dramatic Club 1, 2; Dramatic Club Play 2.

EVELYN E. KIMBALL

General
F. T. A. 3; Art Club 2, 3; Outing Club 1, 2,
3; Y. W. C. A. 1, 2, 3.

M. A. REBECCA KINNEY

General
Library Club 2, 3; Glee Club 2, 3; Y. W.
C. A. 1, 2, 3; Y. W. C. A. Cabinet 2, 3;
Softball 1.

GERTRUDE A. KNAPP

Junior High
F. T. A. 3; Y. W. C. A. 1, 2; Glee Club
2, 3; Dramatic Club 2, 3; Softball 1; Hockey
1; Tennis 1.

RAYMOND C. KNIGHT

Junior High
Class Treasurer 1; Class President 3; Kappa
Delta Phi 1, 2, 3; Treasurer 2, 3; Basketball
1, 2; Baseball 1; Track 2; Dramatic Club
2, 3; Treasurer 3; Recreation Room Commit-
tee 2; Oracle 2, 3.

JOSEPH LEAVITT

Industrial Arts
Baseball 1, 2, 3; Basketball 1, 2, 3; Band 1;
Alpha Lambda Beta 1, 2, 3; Men's A. A. 1;
Civic Committee 1.

FRANCES H. LIBBY

General
Civic Committee 1, 2, 3; Secretary of Class
1; Art Club 3; Glee Club 2, 3; Commuter's
Club 1, 2, 3; "Green and White" Board 1;
Archery 1.

MARY MacEACHARN

Junior High
Riding Club 3; Library Club 3; Transferred;
Dramatic Club 1, 2; Badminton 1; Glee Club
1, 2; Soccer 2, 3.

GERALD MAYBERRY

Industrial Arts
Baseball 1, 2, 3; Cross Country 1; Track 1;
Art Club 1, 2, 3; President 3; Alpha Lambda
Beta 1, 2, 3; Men's A. A. 1, 2, 3; President 3.

RUTH McDONOUGH

Junior High
Commuter's Club 1, 2, 3; Poetry Club 1, 2,
3; Hockey 1, 2; Basketball 1, 2; Tennis 1;
Softball 1.

LORRAINE McGEE

Kindergarten Primary
F. T. A. 3; Poetry Club 1, 2, 3; Glee Club
2, 3; Health Committee 1, 2, 3; Y. W. C. A.
1, 2, 3; Treasurer 2; Back-to-Gorham Day
Committee 2.

GERALDINE McGRAIL

General
F. T. A. 3; Poetry Club 1, 2, 3; Glee Club
2, 3; Operetta 3; Records Committee 2, 3.

EDNA MERITHEW

General
F. T. A. 3; Campfire Course 3.

LAURA H. MESERVE

Junior High
Glee Club 1, 2, 3; Dramatic Club 1, 2, 3;
Library Club 1; Poetry Club 1, 2, 3; Outing
Club 1; Delegate to N. E. Convention 1;
Athletic Board 1; Tennis Councillor 3;
Operetta 1, 3; Y. W. C. A. 1; Dramatic Club
Play 1.

JUNE M. MILES

General
Commuter's Club 1, 2, 3; F. T. A. 3;
Archery 3.

ELIZABETH MITCHELL

Junior High

RICHARD NEAL

Industrial Arts
Basketball Manager 1, 2, 3; Glee Club 2, 3;
Baseball 1; Y. M. C. A. 1, 2, 3; Alpha
Lambda Beta 1, 2, 3; Treasurer 3; Men's
A. A. 1, 2, 3.

IDA C. NELSON

Junior High
F. T. A. 3; Y. W. C. A. 1, 2, 3; Library Club
2, 3; Outing Club 2, 3.

CATHERINE O'DONNELL

General
Commuter's Club 1, 2, 3.

SALLY F. O'TOOLE

General
Badminton 2, 3; Commuter's Club 1, 2, 3.

JUANITA PARKS

Kindergarten Primary
Y. W. C. A. 1; Poetry Club 1, 2, 3; Library
Club 1, 2; F. T. A. 3; Outing Club 1.

CAROLYN PATRIQUIN

Junior High
Y. W. C. A. 1, 2, 3; House Committee 3;
"Green and White" Board 3; Poetry Club 1,
2, 3; Outing Club 1, 2; Superintendent's Day
Banquet 3.

GEORGE E. PENDENTER

Junior High
Baseball 1, 2, 3; Basketball 1; Commuter's
Club 1, 2, 3; Kappa Delta Phi 1, 2, 3; F. T.
A. 3; Y. M. C. A. 2; Men's A. A. 1, 2, 3;
Art Club 1; Minstrel Show 2; Badminton 1.

LUCI POLI

General
F. T. A. 3; Y. W. C. A. 1, 2, 3; Art Club
3; Outing Club 1, 2, 3.

BETTY QUINN

General
"Green and White" Board 3; Riding Club
1, 2, 3; Art Club 1, 2; Civic Committee 3;
F. T. A. 3; Commuter's Club 1, 2, 3; W.
A. A. 3.

MARY E. RAYNES

General
F. T. A. 3; Outing Club 1; Art Club 2, 3;
Library Club 3; Y. W. C. A. 1, 2.

OLIVE RILEY

General
F. T. A. 3; Outing Club 1, 2; Y. W. C. A.
1, 2; Orchestra 1, 2, 3; Glee Club 2, 3;
Operetta 3.

ALICE SEAWARD

General
F. T. A. 3; Outing Club 1; Y. W. C. A. 1, 2;
Library Club 3.

HELEN SLOSBERG

Junior High
F. T. A. 3; Dramatic Club 3; Y. W. C. A. 3.

MARY SNELL

General
F. T. A. 3; Commuter's Club 1, 2, 3; Poetry
Club 1, 2, 3; Art Club 3; "Green and White"
Board 3.

EMILY SPROUL

General
F. T. A. 3; Outing Club 2, 3; Back-to-
Gorham Day Committee 3; Y. W. C. A. 1,
2, 3; Glee Club 2, 3; Y. W. C. A. Cabinet
2, 3.

SHIRLEY M. STANLEY

Junior High
Poetry Club 1, 2, 3; President 3; Dramatic
Club 2, 3; W. A. A. 1, 2, 3; "Green and
White" Board 3; Volleyball 1; Tennis 2, 3;
Softball 1; Manager Skating Rink 2.

ESTHER STAPLES

General
F. T. A. 3; Y. W. C. A. 1, 2; Outing Club
1, 2; Glee Club 1, 2, 3; Library Club 1;
Tennis 1.

EDITH THAYER

Junior High
Poetry Club 2, 3; Library Club 2, 3; Presi-
dent 3; Outing Club 1, 2, 3; Secretary-
Treasurer 2; Y. W. C. A. 1, 2, 3; "Green and
White" Board 3; W. A. A. 3; Athletic Coun-
cil 3; House Committee 3; Vice President 3;
F. T. A. 3; Basketball 1, 2; Volleyball 1;
Tennis 1.

BARBARA THOMAS

General
Commuter's Club 1, 2, 3; Badminton 1, 2, 3;
F. T. A. 3; Campfire Course 3.

ROBERT M. VAUGHAN

Industrial Arts
Glee Club 1; Basketball 1; Baseball 1;
Manager 1; Assistant Manager 2; Badmin-
ton 1; Art Club 1, 2, 3; F. T. A. 3; Alpha
Lambda Beta 1, 2, 3.

CHRISTINE WELCH

General
Glee Club 1, 2, 3; Civic Committee 1, 2, 3;
Y. W. C. A. 1, 2, 3; Secretary 2, 3; Outing
Club 1, 2, 3; Superintendent's Day Commit-
tee 3; F. T. A. 3.

KATHLEEN WELCH

Kindergarten Primary
Dramatic Club 2, 3; Commuter's Club 1,
2, 3; Cheerleading 2.

WILLIAM WELTON

Junior High
Kappa Delta Phi 1, 2, 3; Baseball 1, 2, 3;
Basketball 1, 3; Cheerleading 2, 3; Play 2.

BETTY WHITE

General
F. T. A. 3; Library Club 2, 3; Art Club 2, 3;
Y. W. C. A. 1, 2, 3; Outing Club 1, 2, 3.

GERALDINE WHITE

Junior High
Y. W. C. A. 2, 3; W. A. A. 1, 2, 3; House
Committee 1, 2, 3; President 3; Interclass
Athletic Council 1, 2; Poetry Club 1, 2, 3;
Treasurer 3; Entertainment Committee 3;
Basketball 1, 2; Softball 1; "Green and
White" Board 2; Cheerleading 1, 2; Tennis 1.

DOROTHY WHITTEN

General
F. T. A. 3; Glee Club 2, 3; Hockey 1; Bad-
minton 2, 3; Art Club 1, 2, 3; W. A. A. 3;
Commuter's Club 2, 3; Campfire Course 2, 3.

RITA WING

General
F. T. A. 3; Commuter's Club 1, 3; Badmin-
ton 1, 2, 3.

SOPHOMORE CLASS



John B. Alden, Gorham, Maine
 Philip N. Archambault, Springfield, Maine
 Elizabeth M. Bacon, Brunswick, Maine
 Dorothy Baker, Portland, Maine
 Margaret T. Barron, Portland, Maine
 Patricia C. Barron, Portland, Maine
 J. Alden Bass, Dresden Mills, Maine
 Esther E. Bennett, Portland, Maine
 Mary E. Bennett, Portland, Maine
 Ronald J. Bickford, Augusta, Maine
 Edwin E. Black, Waldoboro, Maine
 Evelyn M. Blake, Brownville, Maine
 Clayton S. Brown, Gorham, Maine
 Blanche Brume, Gray, Maine
 Marjorie L. Butler, Union, Maine
 Winifred S. Carll, Saco, Maine
 Virginia B. Clark, Augusta, Maine
 Doris L. Colley, Bath, Maine
 Helen E. Cox, Cape Elizabeth, Maine
 Mary Curran, Portland, Maine
 Virginia M. Davis, Bethel, Maine
 Thomas Demers, Gardiner, Maine
 Thomas Dickens, Camden, Maine
 Patricia A. Dole, Sebago Lake, Maine
 Margaret Dow, Portland, Maine
 Hazel L. Frank, Portland, Maine
 Mona I. Frank, Portland, Maine
 Douglas Freeman, No. Fryeburg, Maine
 Walter S. Gammon, Bridgton, Maine
 Mary Elizabeth Gonya, Millinocket, Maine
 Pauline Goodridge, Westbrook, Maine
 Nancy P. Goodwin, Winchester, Mass.
 Forrest R. Gowen, Sanford, Maine
 John N. Grover, Dixfield, Maine
 Edson B. Hadlock, Jr., Kezar Falls, Maine
 Annette V. Hall, Waldoboro, Maine

Pearl A. Hartt, Belfast, Maine
 Janet Henry, Thomaston, Maine
 Priscilla Hicks, Portland, Maine
 Catherine A. Howard, Lewiston, Maine
 Katherine L. Huston, Lisbon Falls, Maine
 Mildred M. Jackson, Warren, Maine
 Philip E. James, Cape Elizabeth, Maine
 Cicely E. Kennedy, North Berwick, Maine
 Richard F. Kilroy, Portland, Maine
 Philip L. Kimball, Gorham, Maine
 Barbara M. Libby, Biddeford, Maine
 Alice I. Lowell, Gardiner, Maine
 Marjorie E. MacKenzie, E. Millinocket, Me.
 Alice G. McCarthy, Portland, Maine
 Louise E. McLain, Waldoboro, Maine
 Adeline Montebello, Portland, Maine
 Phyllis I. Norwood, Southwest Harbor, Me.
 Charles Pendexter, Portland, Maine
 Leo Paul Petrin, Biddeford, Maine
 Donald F. Pierce, Springvale, Maine
 John Piscopo, Portland, Maine
 Hilda J. Rackliff, Sebago Lake, Maine
 Waldron S. Roberts, Sanford, Maine
 G. Raymond Robinson, Dennysville, Maine
 Ellen M. Rowe, Portland, Maine
 Mary T. Rowe, Portland, Maine
 George E. Sanborn, Portland, Maine
 Florence H. Sias, Turner Center, Maine
 Jane Skillings, Gorham, Maine
 Ernestine L. Smith, Kennebunk, Maine
 Harold F. Spiller, Oakland, Maine
 Pauline A. Supple, Portland, Maine
 Margaret R. Swett, Westbrook, Maine
 Jean M. Thompson, Brewer, Maine
 Jocelyn R. Tozier, Augusta, Maine
 Warren J. Turner, Portland, Maine



SOPHOMORES

The second year class entered Gorham Normal School in the fall of 1940 with eighty-six members. During the first year many individuals began to gain prominence and take their places in extra-curricula activities. Now the Sophomores have returned ready to further establish themselves with the school. It was good to be back helping the underclassmen get established, getting new schedules from Miss Wood and Miss Lewis in the old gym.

Early in the Fall they held a class meeting at which time they elected officers. The officers were: President, Phil James, Vice President, Blanche Brume, Secretary, Millie Jackson, Treasurer, Ginnie Davis.

Back in classes again they had many new experiences. They were in new divisions, they had voice-testing for music, five minute speeches for Oral-English, Observation reports, and at the end of the quarter—exams. At the beginning of the second semester the first division went out to do their practice teaching. The second division planned to go out during the fourth quarter but due to a change in the number of available teachers for next fall they did not go out but will in the fall for eighteen weeks. This group was greatly disappointed because they had had their plans all made to go out.

SOPHOMORES

The Sophomores were not inactive socially. They had, early in the fall an outing which was introduced by a treasure hunt and ending at Alden's Pond where Italian sandwiches were served to the hungry group. Dr. Bailey acted as chaperone and song-leader on this outing. At another class meeting the idea of class dues was introduced much to the liking of all. At another meeting they chose Mr. Hill as their faculty advisor. They made plans for a dance which was conducted in a Hallowe'en atmosphere. They had a Sophomore parade led by Peanut and Phil. Everyone who went had a good time in spite of the rain. During the third quarter they had a party in the recreation room for those who were then out practice teaching. They played games, danced, ate, and had an evening of general fun.

Besides these activities on their own they helped Miss Wood, Miss Andrews and Miss Dahl, in presenting the second Pageant of America. During the winter they made plans for a sleighride but in June they were still waiting for the proper weather. Although they did not have good weather for their outing they did have the Snow Queen in their class—Ginnie Davis.

Several of this group were called into service before the end of the year. Some of these men were: D. Freeman, R. Bickford, T. Demers and T. Dickens.

Then too they took active part in the operetta "The Mocking Bird". They listened to Phil and John relating their experiences at the murder parties.

With all these pleasant memories they left in June planning to return next year for more fun and work.

FRESHMEN



On September 8, 1941, this class met as a group for the first time at 3:00 P.M. in the old gym for the purpose of registering.

Early in the fall a meeting of this group was held for the election of officers. These officers were: President, Bob Vail, Vice President, Alfred McDonough, Secretary, Ronald Towne, and Treasurer, Alton Benson. This group did not sponsor anything itself until the spring quarter when they successfully presented a Minstrel Show in Russell Hall.

Two of their men were successful in winning their letters in track. These men were: Dick Miller and Gene Smith. Bob Vail was a star on the basketball squad varsity five.

All in all they had a quiet but not uneventful year.

FRESHMAN CLASS

Eleanor L. Appleton, Augusta, Maine
Eleanor D. Barton, Gorham, Maine
Alton H. Benson, Jr., Kennebunkport, Maine
Elvira Birney, Mechanic Falls, Maine
Irene F. Boynton, Palermo, Maine
John N. Burke, Portland, Maine
F. Elton Carmichael, Brownville Jct., Maine
Ruth B. Carter, Portland, Maine
Luella S. Clark, Sanford, Maine
Mary E. Clark, Gorham, Maine
June E. Cleaves, Bar Harbor, Maine
Phyllis C. Cole, Portland, Maine
Arnold Cooper, Portland, Maine
M. Virginia Coyne, Portland, Maine
Zita A. Cullinan, South Portland, Maine
Bettina J. Dalton, Ogunquit, Maine
Marjorie A. Dame, Cumberland Mills, Maine
Lucie Dickens, Camden, Maine
Robert Dolloff, Belfast, Maine
Paul H. Dorr, Boothbay Harbor, Maine
Berenice E. Edwards, Poland Spring, Maine
Margaret A. Edwards, Portland, Maine
Barbara F. Emery, Waterville, Maine
Judith R. Epstein, Bucksport, Maine
Katherine L. Flaherty, Portland, Maine
Ernest C. Gerry, Jr., Lovell, Maine
Bernice M. Gibson, Hallowell, Maine
Evelyn M. Goddard, Waterville, Maine
John E. Googin, Portland, Maine
M. Hope Goodwin, Biddeford, Maine
Ruth E. Greene, Bar Mills, Maine
Gloria M. Hicks, Portland, Maine
L. Whitney Hodgkins, Ellsworth, Maine
Mildred H. Jagger, Sanford, Maine
Martha L. Jones, Damariscotta Mills, Maine
G. Lewis Jordan, Mechanic Falls, Maine
Helen I. Jorgensen, South Windham, Maine
I. Barbara Joyce, Portland, Maine
William C. Kilroy, Portland, Maine
Mary Elizabeth Kimball, Gorham, Maine
Patricia J. Kirby, South Portland, Maine
Elizabeth M. Lee, South Portland, Maine
Doris A. Libby, Sanford, Maine
Erasmia S. Magure, Millinocket, Maine
Audrey M. Martin, Douglas Hill, Maine
Giovannini M. Masselli, Lewiston, Maine
Edward J. McDonough, Portland, Maine
Lloyd A. Merrifield, Hiram, Maine
Marjorie H. Merrill, Waterville
Richard A. Miller, Waldoboro, Maine
Alden W. Mitchell, Plymouth, Mass.
Harold S. Moore, Monmouth, Maine
Eve H. Moses, Gorham, Maine
Jacqueline H. O'Mara, East Millinocket, Me.
Robert E. Osborne, Gorham, Maine
Jane E. O'Sullivan, Biddeford, Maine
Jeanne M. Pate, Achushnet, Mass.
Eleanor J. Paul, Portland, Maine
Paul L. Quinn, Portland, Maine
J. Eloise Russell, Gray, Maine
Barbara A. Savage, Augusta, Maine
Lillian Savage, Rockland, Maine
Evelyn J. Small, Portland, Maine
Margaret L. Small, Saco, Maine
Eugene W. Smith, Lisbon Falls, Maine
Miriam E. Spring, East Hiram, Maine
Barbara C. Stults, Portland, Maine
Adeline W. Sugg, Lisbon Falls, Maine
Ruth F. Swett, Sanford, Maine
H. Raymond Thombs, Douglas Hill, Maine
Laura L. Thompson, Cumberland Ctr., Me.
Ronald E. Towne, Kennebunk, Maine
Robert B. Vail, Cumberland Center, Maine
Frank J. Vaitones, Lewiston, Maine
Neal R. Ward, Thorndike, Maine
Winona A. Wiggin, Portland, Maine
Katherine B. Willjwerth, So. Portland, Me.
Virginia A. Wise, Gardiner, Maine
Christine A. Wormwood, No. Baldwin, Me.

GORHAM AND DEFENSE

The impact of war on civilian life was felt most acutely at Gorham Normal School on April 2 when the State Department of Education directed that Sophomores who had not yet done their student teaching remain at school for the fourth quarter and be ready to fill for 18 weeks next year the jobs of regular teachers in schools not associated with the Normal School.

The plan is that the 22 members of the C2 division shall take the first quarter of their third year's class work this spring. During the first two quarters of next year, half of them will go into schools as teachers, one to a schoolroom. There will be one supervisor for five student teachers, so that each student teacher will have full-time assistance one day a week. At the end of the 18 weeks, these student teachers will return to complete their third year and the other half of the class will take their places. Although the details are not completed, it is expected that the student teachers will receive enough money to pay their board and room and the rest of the salary which would ordinarily be paid a teacher will go to pay the salary of the supervisors.

Although there will be about 20 more Gorham graduates available for teaching positions this year, the situation in Maine is believed to threaten a serious shortage of teachers owing to entrance of many teachers into the army and civilian branches of war work. The plan to make student teachers available to fill vacancies, if they occur, is one method conceived to meet this shortage in Maine. It is affecting all normal schools.

The effect on Gorham was felt during the last quarter this year when the Training School had only two student teachers and all the rest of the student body was taking class work. Miss Hastings helped ease the added faculty load by taking over Dr. Bailey's classes in Principles of Education and American Education in addition to her observation classes.

On April 2 also, about 90 minutes after the student teaching plan became known, a well attended meeting of the men's athletic association met and voted to cancel intercollegiate baseball and track competition this spring. The action was taken after cancellation of two games had been received from Keene leaving only five games, two of them requiring a trip

of more than 600 miles. The problem of securing transportation seemed insurmountable. The alternative plan of scheduling games with nearby academy and college freshman teams was voted down.

Also on April 2, dormitory students received registration cards from the civilian defense organization of Gorham village asking them to register for defense work which they were equipped to do.

Up to this time considerable had been done by the normal school in defense work. Mr. Sloat was one of the two assistant chief observers of the local aircraft observation post and Mr. Smith had made lantern slides used in the training of the 75 men who volunteered for this duty. Serving as observers were Mrs. Treworgy and about a dozen of the students and faculty members.

During Christmas vacation Mr. Woodward, as assistant chief air raid warden for Gorham, attended a school for wardens at Augusta, and on his return gave a course for the local wardens lasting eight weeks. In the local organization, Dr. Bailey and Mr. Packard were appointed as two of the four sector wardens.

Under the leadership of Dr. Duley and Miss Wood the dormitory students were organized for orderly and safe procedure in case of air raids. Student wardens who had taken Mr. Woodward's course were appointed. The dining room in East Hall was blacked out with plywood window covers made by shop men under Mr. Cilley. In the practice blackout, every dormitory occupant was accounted for in the blackout room in a record number of seconds.

Miss Flint taught three Red Cross classes in first aid, and Miss Littlefield taught a nutrition class. Generous gifts of money and work to the Red Cross and other war agencies were made by students and faculty.

The rubber shortage made for change in the habits of commuters, and the amount of student bus business between Gorham and Portland mounted, thanks to Mr. Swett's policy of lowering the fare on his busses.

After adjusting, in November, to an expected \$6,000 available for student NYA earnings, war needs cut this summer to

(Continued on Page 76)



Principal's Home



*Dr. Francis L. Bailey
A.B., M.A., Ph.D.*

F
A
C
U
L
T
Y



JESSIE L. KEENE
Ph. B.



LOUIS WOODWARD
A.B.; M.A.



LAWRENCE N. CILLEY



MARY L. HASTINGS



MABEL F. RYAN
B.S.



MIRIAM E. ANDREWS
B.S.



EVERETT S. PACKARD
B.S.



HAYDEN L. V. ANDERSON
B.S.



EMMA F. HARRIS
B.S.; M.S.



ESTHER E. WOOD
A.B.; M.A.



EVELYN LITTLEFIELD
A.B.



ETHELYN F. UPTON
B.S.; M.A.



BESS LEWIS
A.B.; M.S.



DOROTHY FLINT
A.B.; M.S.



CHESTER H. SLOAT
A.B.; M.A.



MARJORIE B. EAMES
B.S.



GWEN DAHL
B.S.; M.A.



HELEN E. MURLEY
B.S.; M.S.



HARRIETTE G. TRASK



CELIA N. GROSS



BERTHA V. FROST
B.S.



CORA G. HAY
B.S.



RAYMOND E. BASSETT
A.B.; M.A.



ELEANOR I. DULEY
A.B.; M.A.; Ph. D.



MARY PEABODY
B.S.



ALICE WETHERELL



ETHEL CLAYTON
B.S.



RICHARD M. SAVAGE
B.S.; M.A.



WARREN G. HILL
B.S.; M. Ed.



RICHARD B. SMITH
A.B.; B.S.



ADENA SMITH
B.S.



MRS. RICHARD SAVAGE
B.S.



HELEN ALLEN
B.S.



MYRTLE STOREK



MRS. BERRY
MRS. TREWORGY

TRAINING SCHOOL

(Continued from Page 7)

in and what a noise! Then the cat meows at the birds and the dog barks at the cat. The clock rings and the sun shines in the window. I get dressed and before I go down stairs guess what happens? The morning bus just leaves and I'm late for school.

Paul King, Grade 6

In turning to the top grade of the school, we found another that bustled with activity all year long. When the writer approached the door of Grade nine for an interview, he saw first a mountain of newspapers on the floor. The collection was to be sold to help pay for the class gift—an electric clock for the room. They also purchased a water bubbler for the corner of their room to relieve congestion in the hall.

At Christmas time, Grade nine sent four boxes of fruit, jellies and jams and toys to the Children's Hospital and helped the Poetry Club of the Normal School collect books for the forts in Portland.

The dramatic contest conducted by Mr. Sloat found the first and third place winners among Miss Trask's pupils—Franklin Emmons received a gold medal and had his name printed on the prize speaking cup, while the bronze medal went to Evelyn Lunt.

The Student Senate—governing body for the Junior High School grades, also finds its leaders in this room—President, Secretary and Treasurer. In the fall these people attended the conference of student councils at Augusta and reported their trip to the school in an assembly.

One of the most novel programs ever to be put on for the school was the animated magazine produced by this group. All the features of a good magazine were pictured—posed cover; showing an October scene; an advertisement; the school hero, showed a boy with a football under one arm and books under the other—he

stood against a background of cheerleaders. The short story "The Play's the Thing" was very appropriate—all the characters caught the mumps. Many good magazines show the fashions and this one was no exception. "The Good Old Days"—picture of hoop skirts and parasols contrasted with "So You're the Outdoor Type", the modern sports miss. "Going Somewhere" showed the cast dressed in their Sunday best. The music page rang forth with "You Are My Sunshine" and "Daddy". Tested Recipes Corner featured directions for Success, Star Pupil, Interesting Study and All Star Class. The dramatic page came to life with the play "Census Man".

This random picture shows only a few of the many interesting and valuable activities which go on at our Gorham training school.

POETRY CLUB

(Continued from Page 18)

country—Washington and Lincoln. This meeting was held at Mrs. Richard Savage's and Judy Daggett took charge. March 4, The Southland was represented by a program on Negro poetry with Betty Frost as chairman. March 18 was the day given over to the Irish element and was under the leadership of Eileen Cullinan. March 25 Laura Meserve had charge of the program which was on the poetry and music of Alaska. April 1 was reserved for the Easter Program under the direction of Carolyn Patriquin. April 15 we devoted to "Canada, Our Neighbor", with Edith Thayer in charge. May 8, each year the Poetry Club presents a Mother's Day Program in Chapel and this year it was in charge of Evelyn Ward and Doris Whitely. May 13 was our final program, and a most instructive and successful year had reached its conclusion. This program was a very fitting one entitled, "America For Me", and was directed by Catherine Hanson.

Members:

Florence Andrews, Doris Armstrong, Dorothy Ball, Priscilla Bent, Doris Colley, Constance Cullinan, Eileen Cullinan, Judy Daggett, Betty Frost, Helena Gagne, Eleanor Gould, Catherine Hanson, Pearl Hartt, Geneva Hawkes, Helen Heel, Catherine Howard, Josephine Irving, Mildred Jackson, Betty Kennedy, Catherine Lewis, Ruth McDonough, Lorraine McGee, Mary McGinty, Gerry McGrail, Laura Meserve, Adeline Montebello, Phyllis Norwood, Juanita Parks, Carolyn Patriquin, Bettina Pillsbury, Ernestine Smith, Mary Snell, Shirley Stanley, Edith Thayer, Evelyn Ward, Gerry White, Doris Whitely, Jocelyn Tozier, Mary Bennett, Winifred Carll, Louise McLain, Elizabeth Bacon, Barbara Libby, Virginia Davis.

GORHAM AND DEFENSE

(Continued from Page 67)

little over half this amount and many who had figured on earning part of their expenses this way had to make other plans. With manpower in the village lessened, several of the men found all the work they could handle from private sources.

Gorham's greatest contribution to the war has been its men who left during the year to enter the armed forces. Roger Pedneault and Francis Corrigan were the first to be called a year ago. Eddie Coyne followed after the school year ended. All three had been members of the naval reserves. Ronald Bickford enlisted in the navy last winter. In the army are Paul Tibbetts and Grant Thibault; in aviation: Alden Bass, Ray Austin, Orlando Aliberti, George Etzel, Thomas Demers, Thomas Dickens, Douglas Freeman, Leslie Whittemore, Harold Spiller and Tommy Vail.

A
D
V
E
R
T
I
S
E
M
E
N
T
S

To the Classes of 1942

I wish you all the pleasures and happiness
of life and success in your chosen profession.

LOUIS' RESTAURANT AND SODA SHOP



LOUIS J. CHRISSIKOS, Prop.

We serve you the best food and refreshments with the best service
for your money.

- | | | |
|--------|----------------|-------------------|
| STEAKS | BANANA SPLITS | CONFECTIONERY |
| CHOPS | ROYALS | SODAS |
| SALADS | VELVETS | ICE CREAM |
| SOUPS | NORMAL SPECIAL | FRESH SALTED NUTS |
| STEWES | SUNDAES | |

Special meal rates for students . . . by the week or quarter

To all the members of the Faculty, Students and Organizations at Gorham
Normal School, I wish to express my sincere thanks for the support given me
during the past year. May our friendship continue during the next year.

THE BARDEN DRUG COMPANY

NELSON G. BARDEN, Registered Pharmacist
ROGER L. SWETT LEON A. THOMAS

Parker Pens and Pencils
 School Supplies Greeting Cards Stationery
 Luncheonette and Soda Fountain

GIFTS — GAMES — NOVELTIES
 CAMERAS — FILMS — CAMERA SUPPLIES
 24-Hour Service on Developing and Printing

WHITMAN'S — KEMP'S — GOBELIN CHOCOLATES

Attractive Jewelry with Gorham Normal Insignia

See Us First for Graduation Gifts and Remembrances

SERVICE — QUALITY — CLEANLINESS

The Rexall Store

GORHAM, MAINE

School Supplies

Distinctive Stationery

Fountain Pens

Greeting Cards for all occasions styled by:
NORCROSS - GIBSON - RUSTCRAFT

FINE CHOCOLATES AND CANDIES

CAMERAS AND FILMS

Quality Developing — Printing — Enlargements

GEORGE S. BURNELL

GORHAM, MAINE

All Portrait Work

IN THIS YEAR BOOK

MADE BY

WHEELAN STUDIO

OF

RINES BROS. CO.

PORTLAND, MAINE

Compliments of

Dixon's Barber Shop

Gorham, Maine

Compliments of

Barrows' Greenhouses

Dial 2751

"GRADUATION BOUQUETS A SPECIALTY"

Merritt G. Pride, Inc.

MERRITT G. PRIDE, Prop.

Tydol "Flying A" Gas and Oil

Tires - Greasing

"Service With Pride"

Phones: Gorham 2351, Westbrook 160

Gorham, Maine

Compliments of

Dr. C. J. Bouffard

Gorham, Maine

Compliments of

Gorham Savings Bank

Gorham Hardware
Company

KYANIZE PAINTS AND VARNISHES
MEN'S CLOTHING — PYREX WARE
General Electric Mazda Lamps

Dial 4753

Compliments of

New Gorham Lunch

Home Cooked Food

SPECIAL PARTIES

Special Rates to Students

THE BEST FOR LESS

Clarence E. Carll

"Insurance of Every Kind"

Gorham, Maine

Telephone 3761

Go To~

GORHAM, MAINE

PLAYHOUSE THEATER

for the ultimate in sound and projection
of motion pictures.

ALWAYS A GOOD SHOW

TEL. DIAL-2791

It Will Pay You To Visit

TURNER'S 5¢ - \$1.00 STORE

Headquarters for:

SCHOOL SUPPLIES, STATIONERY, COSMETICS, TOILET GOODS,
NOTIONS, CANDY, HOSIERY AND UNDERWEAR—TO MENTION
SOME OF THE TWENTY-TWO DEPARTMENTS REPRESENTED

GORHAM, MAINE

FESSENDEN'S

Stationers and Engravers

497 Congress Street, Portland, Maine

SCHOOL SUPPLIES

ARTIST SUPPLIES

Books - Stationery - Gifts

Loring, Short & Harmon

Portland, Maine

Compliments of

FOSTER-AVERY'S

Where Young Men's
Clothes Are Just Right
In Every Respect

Maine's Leading Sporting Goods Store

COMPLETE LINES OF
SPORTS APPAREL AND ATHLETIC
EQUIPMENT

**The James Bailey
Company**

264-266 Middle St., Portland, Maine

M. F. BRAGDON PAINT CO.

Painting Materials — Wall Papers

47 EXCHANGE STREET, PORTLAND, MAINE

OWEN, MOORE'S

Apparel and Accessories for Women
and Children

PORTLAND, MAINE



Strictly a woman's store specializing in stylish apparel of quality
so entirely dependable as to make possible our guarantee
of satisfaction to every customer

Smart Apparel

FOR SCHOOL, SPORT AND BUSINESS WEAR

Exclusive in Character — But Not Expensive



WESTBROOK

PORTLAND

HOOPER'S

INSTITUTION AND HOME
OUTFITTERS

FOR 78 YEARS

Dial 2-2855 Portland, Maine

SUPERBA
FOOD PRODUCTS

Milliken Tomlinson
Company

OUTFITTERS

GIRLS' CAMPS - SCHOOLS - COLLEGES

Gymnasium Clothing - Outing Specialties - Sportswear - Camp Uniforms

HANOLD OUTFITTING COMPANY
STANDISH, MAINE

DESIGNERS AND OUTFITTERS

OFFICIAL OUTFITTERS GORHAM NORMAL SCHOOL

This "GREEN and WHITE"

PRINTED AND BOUND BY

Merrill & Webber Co.

95-99 Main Street Auburn, Maine

Compliments of

Nutter's Dept. Store

Reliable Merchandise
At Fair Prices

80 Main Street, Westbrook, Maine

Compliments of

First National Stores

A. MARTIN, Manager

Shopping is always a pleasure at

PORTEOUS, MITCHELL & BRAUN CO.

Where Quality Merchandise, Wide Assortments,
New Styles, are the Keynotes Every Day in the Year

PORTLAND, MAINE

HARRY RAE BURN

Successor to

BROWN, COSTUMER

Costumes, Make-up Material
and Wigs

562 Congress Street, Portland, Maine

Compliments of

JOHN MEAD

**Famous Brand Shoe
Store**

ALL THE NEW AND SMART
SHOE STYLES FOR THE
YOUNG DEB

12 Forest Avenue, Portland, Maine

Compliments of

MRS. CLARK

Gorham, Maine

PATRONS' CO-OPERATIVE CORPORATION



122 COMMERCIAL STREET, PORTLAND, MAINE

Smooth Sailing!



When your Yearbook Course
Is charted by
HOWARD - WESSON COMPANY
44 Portland Street, Worcester, Massachusetts

New England's Largest College Engravers

CUMMINGS BROS.

WHOLESALE GROCERS
BEEF AND PROVISIONS

Sponsors of
Nation-Wide Service Grocery Stores

Distributors for
Stokely's Finest Canned Goods

Telephone 3-0261

PORTLAND, MAINE

Twin City Machine Co.

MACHINISTS - WELDERS

31 MECHANICS ROW

AUBURN

MAINE

Compliments of

Westbrook Star Laundry

1 Carpenter Street

WESTBROOK PHONE 45

THE MEN'S SHOP

APPAREL FOR MEN AND BOYS

874 MAIN STREET

WESTBROOK

MAINE

H. B. CLARK

CONTRACTOR AND BUILDER

511 East Bridge Street

PORTLAND

MAINE

Compliments of

Dr. Stanley H. Rowe

OSTEOPATHIC PHYSICIAN

Gorham Maine

Compliments of

HOGAN BROS.

Portland, Maine

Compliments of

LaFond & Co.

DEPARTMENT STORE

Westbrook, Maine

GUERNSEY MILK

DELIVERED TO YOUR HOME

Walnut Crest Farm

CLINTON RINES

Gorham Maine

Compliments of

Dr. Daniel D. Lovelace, Jr.

Gorham Maine

Home Made Ice Cream

NEW AND ORIGINAL FLAVORS

Morin's Candies

877 Main St. Westbrook, Maine

"Eat more of Morin's Candies"

Compliments of

Philip W. Hawkes

QUALITY MEATS
IGA GROCERIES

Gorham Maine

"THE SERVICE STORE"

Compliments of

**Portland-Gorham
So. Windham Bus Line**

Owned and Operated by the
FALMOUTH FORESIDE DEVELOPMENT
COMPANY

Falmouth Foreside, Maine

