

1938

Green and White 1938

Gorham Normal School

Follow this and additional works at: https://digitalcommons.usm.maine.edu/archives_yearbook



Part of the [History Commons](#)

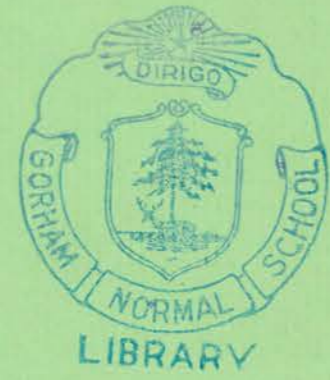
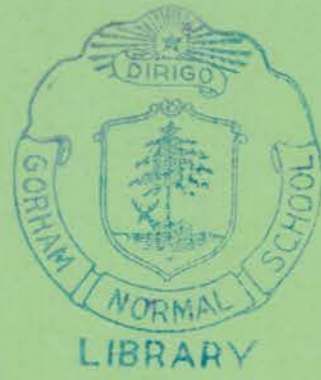
Recommended Citation

Gorham Normal School, "Green and White 1938" (1938). *Yearbooks*. 13.
https://digitalcommons.usm.maine.edu/archives_yearbook/13

This Book is brought to you for free and open access by the University Archives at USM Digital Commons. It has been accepted for inclusion in Yearbooks by an authorized administrator of USM Digital Commons. For more information, please contact jessica.c.hovey@maine.edu.

1938

Green and White



THE GREEN AND
WHITE PRESENTED
TO THE SCHOOL
AS A RECORD OF A
YEAR IN THE HIS-
TORY OF THE
GORHAM NORMAL
SCHOOL

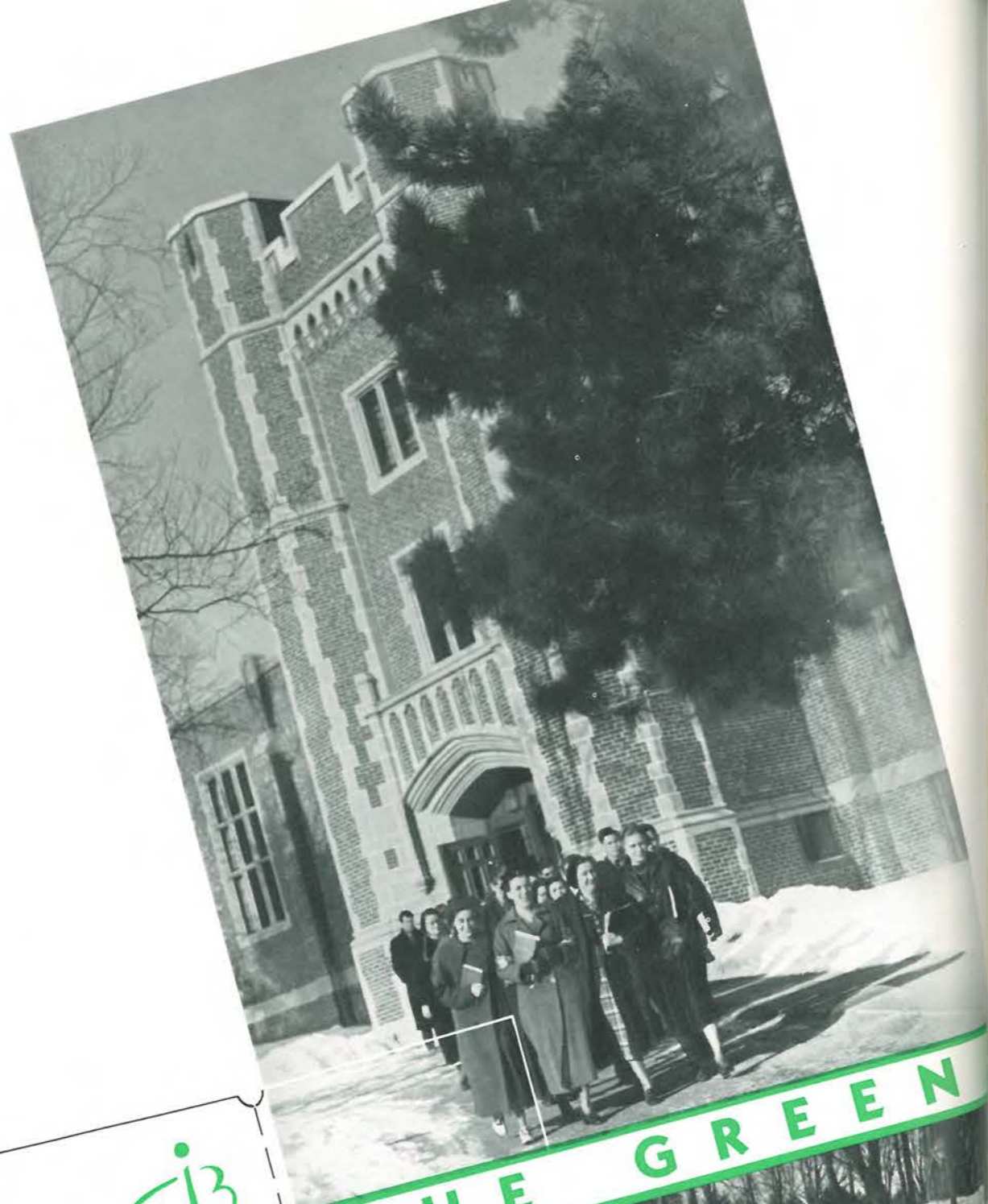
GREEN AND WHITE

A "Story"

OF
SCHOOL
STUDENTS
STUDIES
SOCIAL

Life at Gorham





THE GREEN

AND WHITE · 1938 ·

VOLUME XX
Published by the
Second Year Class
1938
Gorham Normal School
Gorham, Maine



DEDICATED

EVERETT SHERMAN PACKARD, B. S.

TO Mr. Packard, whom we re-
spect as a teacher, cherish as a
friend, and honor as a Christian
and a gentleman, we, the editorial
board, respectfully dedicate this

volume of
THE GREEN AND WHITE.

TO

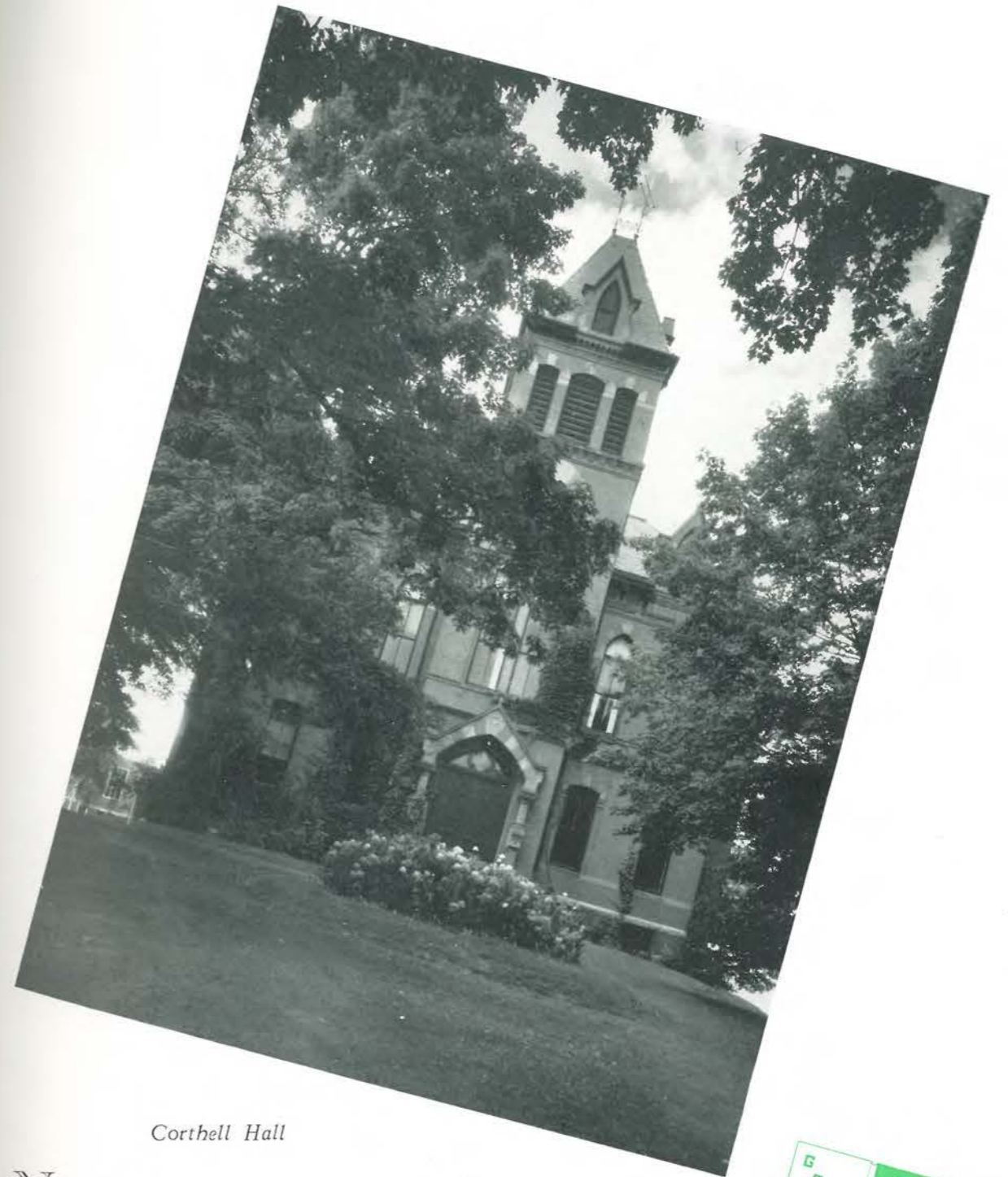


Everett S. Packard



Principal's Residence

THE scene of our story is our beautiful campus spread out over many acres and under the shade of many trees. Typical of its spirit is our principal's residence, reflecting the graciousness of Dr. and Mrs. Russell, and the friendly sentiment of our school.



Cortbell Hall

NAMED for the first principal of Gorham Normal School, our recitation hall is mellow with the memories of old days, and cheerful with the life of the new.





The Junior High School

IN this fine modern elementary school, most of us receive our training for our chosen profession.



Academy Hall

THE oldest building on the campus, erected in 1805, has been used as school-house and dormitory. It now houses our complete woodworking department.





Frederick Robie and East Halls

THE first of the women's dormitories, Robie Hall, erected in 1898, and named for Governor Robie, is connected with the newer hall, East. In Robie Hall is *Center*, the scene of many of our happiest social events.



The Parish Church

A LOVELY old New England Church in the center of the town.





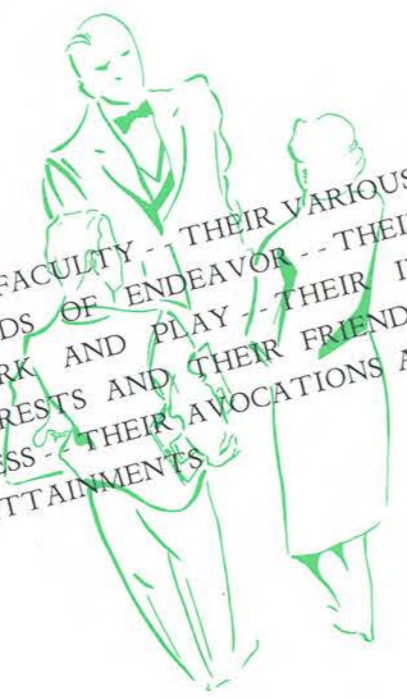
THE walk from the village—the elms as lovely in winter as in summer.



THE old stone wall has stood here since the early Academy days—where cat-tails have been planted and tended. It divides the old campus from its neighbors.



THE FACULTY -- THEIR VARIOUS
FIELDS OF ENDEAVOR -- THEIR
WORK AND PLAY -- THEIR IN-
TERESTS AND THEIR FRIENDLI-
NESS -- THEIR AVOCATIONS AND
ATTAINMENTS



FACULTY



Walter E. Russell

THE PRINCIPAL

STATE NORMAL SCHOOL
GORHAM, MAINE
WALTER E. RUSSELL, PRINCIPAL

April 1, 1936

To the Students of Gorham Normal School:

Some of you have been students here for less than a year and some of you for nearly four years. For such time as you have been here you have been the recipients of all the resources of this school. They have had their influence in helping you to become more efficient teachers. These resources are both material and spiritual. They include campus and buildings, on one hand, and on the other they include teachers and traditions. These traditions have been built up gradually by teachers, students and alumni during the nearly sixty years of the school's life. They have placed restrictions upon you and opened doors before you—both to your advantage.

The reputation of the Gorham Normal School is the outgrowth of the high ideals of generations of Gorham Normal School alumni who have gone forth from its doors actuated by the desire to serve. The richness of your inheritance from those who have gone before you count for more in making you a good teacher than do campus and buildings. Enter into this inheritance with hopefulness and gratitude, and then pass it on increased by the splendid record you will achieve as teachers.

Yours sincerely,
Walter E. Russell

WER/T



FACULTY



WALTER EARLE RUSSELL,
A. B., D. Ed.



GERTRUDE LINCOLN STONE,
B. S., A. M.

Our principal, Dr. Russell, has had many years of faithful service to his school, state and community—teaches Principles of Teaching—his splendid personality and fine figure distinguish him as a scholar and a gentleman. Gives generously of his time and energy to his church and community. In his leisure moments, he finds pleasure in golf, bowling, and cross-word puzzles.

Miss Stone is in charge of the Psychology department—a superior teacher and a charming person to meet socially. Has travelled extensively in the United States and abroad and is one of those people whose lives have been enriched and who enriches others by her many and varied contacts.

Mr. Woodward teaches Science, Ethics, and School Law. Students find his classes interesting and stimulating, and recommend them highly. Is Vice-Principal and has charge of entertainment series. Besides his work, his greatest interests are his family, and music. He has written some poetry—which a few of us have had the pleasure of hearing!

Miss Keene teaches Science, Industrial Arts, Bird Study, and Bible, and teaches all of them remarkably well. Perhaps her greatest hobby is gardening, though her interests are many and varied. Her boundless enthusiasm and sense of humor make a bird-walk a pleasure even when we are caught in a thunderstorm or a seventy-two mile gale!



LOUIS BURTON WOODWARD,
A. B., A. M.



JESSIE LOUISE KEENE
Ph. B.



GEORGE ALBION BROWN



LAWRENCE NELSON CILLEY

Mr. Brown is one of our Industrial Arts teachers, and the Machine Shop and Theory of Electrical Appliance are under his direction, as well as some of the Woodworking. The men who work under him know him as a friendly, jovial soul, always interested in them as well as in their work. Is adviser of the Alpha Lambda Beta fraternity. Has a fine family—one of his sons is also teaching Industrial Arts.

Mr. Cilley is a practical, quiet man, and in addition to giving much help in keeping our school well tended and mended, teaches Woodworking, Forging, Drafting, and Job Analysis. If you don't believe he is a master of his craft, look over the new house he has just finished! He is also adviser to the Lambda Pi Sigma fraternity.

Miss Hastings is Director of Student Teaching and Directed Observation. Has many interests and hobbies outside her work—loves birds and recognizes them by sight and call, knows flowers of the fields and woods, and is a gardening enthusiast. We all rely on her good judgment and service in making teachers of us.

Though she doesn't like winter, Miss Ryan does like to teach Geography and Science, and does it very well. Likes to travel, and has varied and unusual experiences when doing it. Has the happy faculty of making us feel at home in her class room. She says her pet hobby is making flags of all the countries in the world.



MARY LOUISE HASTINGS



MABEL FRANCES RYAN, B. S.





NELLIE WOODBURY JORDAN,
B. S.



MIRIAM EUNICE ANDREWS,
B. S.

Miss Jordan, who teaches History and Penmanship, came to us from her position in the Aroostook State Normal School. She is Dean of Women, and has oversight of the dormitories. Is also an accomplished pianist, and is much interested in photography. We are glad that she decided to become a teacher, instead of following laboratory research work, as she once thought of doing.

Miss Andrews is our Music Director and in addition teaches Aesthetics. She has charge of our Glee Clubs and Orchestra, and our fine music department is proof of her efficiency. Comes to basketball games as regularly as the team—also enjoys contract and golf.

Mr. Wieden teaches Social Sciences and Tests and Measures. He is also our Athletic Director. Is general office help. Classes are interesting—because we admire and like him. Has recently taken up golf and works diligently to better his score. Everybody likes Mr. Wieden.

Mr. Packard is in charge of Printing and Metal Work, and is adviser to the Y. M. C. A. Coaches our Cross Country Teams. Is honorary traffic officer, and the faculty bowling champion. He likes his little joke, too.



CLIFFORD O. T. WIEDEN,
B. S., Ed. M.



EVERETT SHERMAN PACKARD,
B. S.



ESTHER ELIZABETH WOOD,
A. B., A. M.



EVELYN LITTLEFIELD,
A. B.

Miss Wood, who teaches History, is on leave of absence this year, and is studying at Radcliffe. Likes American History best. She is fond of basketball and likes poetry—is a member of the Poetry Club. Is also interested in herb gardening.

Miss Littlefield teaches Household Arts and Grammar. Helps out many school activities—the May Ball, costuming, the Superintendent's Day tea, and the Junior High School cafeteria. Is a real basketball fan. As Miss Andrews is "Big Chief", Miss Littlefield is "Little Chief" to her friends.

Before coming to Corthell to teach Mathematics, Miss Upton taught in the Junior High School. Always wanted to be a doctor, but the habit of teaching was too strong in her family for her to resist the call. Has a strong sense of humor, and is all in all a pretty fine friend and teacher.

With her vivid personality and ready wit, Miss Lewis keeps her Literature classes on the "qui vive". She is an able administrator, as evidenced by her advisory work on the GREEN AND WHITE; also a source of inspiration and lots of fun, as realized by the Poetry Club, of which she is a sponsor. Her collection of Madonna pictures represents another phase of her busy and varied life.



ETHELIN FOSTER UPTON,
B. S., A. M.



BESS LEWIS,
A. B., M. S.



FACULTY



FACULTY



DOROTHY FLINT,
B. A., M. S.



CHESTER HERBERT SLOAT,
A. B., A. M.

Miss Flint, who says her hobby is her job, is in charge of Physical Education and Health Education. She has developed a fine Physical Education Department in our school, and has made women's sports popular and worthwhile. Greatest assets are her contagious enthusiasm and extraordinary good judgment.

Mr. Sloat teaches English and Journalism, and is our dramatic coach. Also teaches Latin in the Junior High School, and is the faculty adviser of the *Oracle*. His chief interests are music and American literature, and he is immensely proud of his two-year-old daughter.

Miss Vietrie, who teaches Art, has many other interests, especially music and dancing. Is adviser of the Art Club, and has charge of the decorations for the May Ball. Comes from Massachusetts, but likes Maine people and Maine climate.

Mr. Jensen is with us for the first time this year, teaching Science and Mathematics and coaching our Basketball team. Remarkable success of the team proves his great ability in this latter field. We hope he will be with us many years.



JUANITA MONTGOMERY
VIETRIE, Ed. M.



LOUIS BALSTAD JENSEN,
B. S., A. M.



ELIZABETH FARR HALE,
A. B., B. S., A. M.



HAYDEN L. V. ANDERSON,
B. S.

Miss Hale is with us this year to teach History during Miss Wood's absence. Her chief hobby is gardening. Likes poetry, and if she couldn't teach History would like to teach Literature. Fond of travel, but likes working with young people better than anything else.

Mr. Anderson is Principal of the Junior High School, and in addition teaches Junior High School Organization. Is Scoutmaster of the local troupe, and is interested in photography. Was official Boy Scout photographer at the Washington Jamboree in 1937.

Miss Pike teaches Primary Arithmetic and Primary Reading and is Supervisor of the Junior Primary. Greatest joy in life is teaching little children, who love her dearly. Is interested in church work, and her avocation is dressing dolls.

Miss Harris teaches Kindergarten Theory and is Supervisor of the Kindergarten. Is fond of amateur photography and likes to travel. Her great delight is in discovering the needs of little children and trying to supply those needs.



LOIS ELEANOR PIKE



EMMA FRANCES HARRIS, B. S.





HARRIETTE GAYNELL TRASK



LONA ALTHEA PRIDE, B. S.

Miss Trask teaches History and Geography in the Junior High School. Is adviser of the Knox and Lincoln County Club. Loves flowers and birds, and is the champion picnicker of the faculty. Is a favorite among the students both at the Training School and on the Hill.

Miss Pride is in charge of the departments of Mathematics and Science at the Junior High School. Is an accomplished mountain-climber and likes outdoor life generally. Says her choice of profession changed frequently, but we are convinced her final choice was a wise one. Adviser of the Y. W. C. A.

Mrs. Gross is the Supervisor of Grades Five and Six in the training school. Is very fond of contract bridge, and is a master at it. Is fond of fishing and swimming. We understand that she reads funny papers diligently.

Miss Peabody, Supervisor of Grades Three and Four, is an accomplished pianist. If she had not chosen the teaching profession, she would have gone into the music field. Is a quiet sort, but her student teachers fully appreciate her ability.



CELIA NASH GROSS



MARY PEABODY, B. S.



MARJORIE BENSON EAMES,
B. S.



L. ALICE WETHERELL

Our librarian is Miss Eames. Always at our service, she renders aid and jogs our memories in the same friendly spirit. She, too, plays the piano well. Is a radio fan. Directs the Library Club.

Miss Wetherell is the gracious lady who supervises Grades One and Two. The happy atmosphere of the Primary rooms testifies to her ability and love for little children. Leisure time activity is amateur photography.

Finally, we pay tribute to our matron, Miss Woodward, whose chief aim in life is to help others and to make them happy.



MARY L. PEDERSON



PHYLLIS TREWORGY



FACULTY

Miss Pederson has charge of the Model Rural School at West Gorham. A cheerful, efficient individual, always interested in everything and everyone about her. Hobbies are hiking and gardening.

Mrs. Treworgy is the little lady "behind the bars" in the office. Everybody's guide, mentor, and friend. She keeps the whole school running smoothly. We just couldn't get along without her.

Three of last year's graduates are efficient assistants in the Training School—Bertha Frost, Virginia Knight, and Ruth Gilpatrick.



FOUR CLASSES FOR FIRST TIME
THIS YEAR -- BRIEF HISTORIES --
MEMBERSHIP -- ACCOMPLISH-
MENTS AND HONORS



CLASSES



FOURTH YEAR CLASS HISTORY

The twenty-six students who make up the Fourth Year class will be the first graduates of Gorham Normal School to receive B. S. degrees in Elementary Education. This class represents the realization of a long-wished-for advance in the history of Gorham.

A small class, but an active, ambitious one, it has already distinguished itself in

many ways. It has a more definite identity than any other class in school. It was the first class to organize this year, and then as a group went into action at once. It has had a class meeting nearly every week, and to judge by results, the meetings have not been entirely social.

All members of this class are graduates of Gorham, with the exception of one, who came to us from Machias. These students were high ranking students even in their high school days. Their number include four salutatorians and one valedictorian. In this, their last year at Gorham, all have distinguished themselves by the high quality of their work.

The class has taken an active part in the extra-curricular life of the school, socially and in athletics. It has contributed four men to the Varsity Basketball squad—the highest percentage of any class in school.

It plans to culminate a very successful year by celebrating Graduation with an elaborate "Senior Week".



FOURTH YEAR GRADUATES



CLASS OFFICERS

<i>President</i>	KEITH JORDAN
<i>Vice-president</i>	COLE KELLEY
<i>Secretary</i>	KARLETON HIGGINS
<i>Treasurer</i>	JUNE JORDAN



GRADUATES



Marjorie Cole
Machias

Arthur Doe
Sheepscot

Kervin Ellis
Augusta

Roberta French
Portland

MARJORIE COLE, a graduate of the Washington State Normal School at Machias, came to us for her fourth year. She has been active in the Library Club. ARTHUR DOE, famous for his lovely blushes, is a dependable, likable chap, and we know how forceful and determined he can be. He has been very active in many fields, having been President of the Y. M. C. A. one year, and taking a leading part in the work of the Dramatic Club. KERVIN ELLIS finished the Industrial Arts course last year. He has been manager of several athletic teams, and he has been a valuable addition to the Glee Club and Orchestra. ROBERTA FRENCH, besides having a happy disposition, has many talents—is artistic, has real dramatic ability, and sings well. She is famous for her management of Commuters' luncheons.

JOHN HAM has been a leader in his classes as well as in extra-curricular activities. He was President of his class for four years, and has been a President of the Civic Committee. He is a basketball star, and has played on baseball and tennis teams. The girls tease him, but he can more than hold his own. KARLETON, or "GUS" HIGGINS, is another basketball star. He has also made a fine record in baseball. He has ability in dramatics. He is a leader in many undertakings, including the captivating of women's hearts. JUNE JORDAN, happy and charming, has been a real worker in the Commuters' Club, the Dramatic Club, and the Poetry Club. She loves to dance, but she thinks her chief interest is in her chosen profession.



John Ham
Portland

Karleton Higgins
Waterville

June Jordan
Portland



Keith Jordan
Portland

Cole Kelley
Westbrook

Arlene Marshall
Bluehill

KEITH JORDAN, handsome Class President, has been an unusual leader. During his four years here, he has played baseball and basketball, has worked in track, has been President of the Civic Committee, and twice President of his class. He has also had good experience in coaching athletic teams. COLE KELLEY is our only married member. He has been interested in various activities. Like all Irishmen, he loves an argument, and his ready wit enlivens all his speech. ARLENE MARSHALL, a fine student, has worked in the Campfire group and in the Y. W. C. A. She often says the unexpected. DAVID McALLISTER is a scholarly and exceptionally well-read student. His knowledge in all fields is extensive, but he especially enjoys reading science and travel. He is actively interested in politics, and is an ardent Democrat.

MARGARET McINTYRE is an efficient business woman. She has been an active member of the Outing and Library Clubs. Her hobbies, so they say, are dieting and reading time-tables. Studious little HILDA McLAIN has proved herself an exceptional student, a good teacher, and a leader with original ideas. In her quiet way, she determinedly puts those ideas to work. She has been connected with the Y. W. C. A., the Civic and House Committees, and the GREEN AND WHITE Board. GRACE PERRY, the real moving spirit of this class, has worked in the Dramatic and Poetry Clubs, and on the Oracle Board. She had a leading part in the Dramatic Club play, and was chosen to be one of our school representatives at the New York Conference. She says she writes poetry for her own amazement.



David McAllister
Gorham

Margaret McIntyre
Bluehill

Hilda McLain
Bristol

Grace Perry
Portland

CLASS OF 1938



Carroll Rines
South Portland

Carroll Ronco
North New Portland

Mervin Rowe
Gorham

CARROLL RINES has distinguished himself in basketball, baseball, and other forms of athletics. He has a ready tongue and a ready pen. He is popular with faculty and students, and has a great reputation as a tease. CARROLL RONCO, commonly known as Pete, excels in the classroom. For an avocation he devotes himself to hunting and fishing. He, too, is fond of a good joke. MERVIN ROWE, a popular commuter, is everybody's friend. He claims everyone as his "sweetheart". MARY SLEEPER, with a grin and a dimple, finds the whole world interesting. She has been twice a member of the House

Committee, and has been active in the Y. W. C. A. She is fond of outdoor sports, especially field hockey and archery. VERNON STAPLEFORD is another graduate of the Industrial Arts course. He is interested in the making of jewelry. He has been a leader in the Y. M. C. A., and has worked for two years on the Committee for Superintendent's Day. RANDALL STAPLES is the man we see always wandering about the halls. He is famous for his happy disposition. He has taken part in interclass athletics for four years, and has been a valuable member of the Commuters' Club.



Mary Sleeper
South Thomaston

Vernon Stapleford
North Anson

Fred Randall Staples
Windham

CLASS OF 1938

GRADUATES



Barbara Stiles
South Portland

Mary Sylvester
Portland

Philip Tarbox
Hollis Center

BARBARA STILES has distinguished herself in the Glee Club and Orchestra, and has proved herself to be a good executive. Do you remember her band at the Farmington game? MARY SYLVESTER came to Gorham after two years at Farmington, and we are certainly glad she came. She has been active in the Commuters' Club and the Poetry Club, and has worked on the Oracle Staff. A fine student, a loyal friend, and altogether one of our best. PHILIP TARBOX is another loyal commuter. He is a great hunter, and says that target practice is his avocation. FRANK TUPPER, our star history

student, has been a member of the Art and Library Clubs, and has been a member of the Tennis teams. He says he is famous for his terrible writing. DWIGHT WEBB, whom everyone knows as Buster, is one of our outstanding athletes. He has played Varsity Basketball and Baseball four years. He loves flashy sox, but says he can be equally enthusiastic about baked beans and potatoes. We think he is distinguished for his contagious smile! BOB WESCOTT has played basketball and baseball, and has been a loyal supporter of the Commuters' Club. His hobby is bowling.



Frank Tupper
Portland

Dwight Webb
Gorham

Robert Wescott
South Portland





THIRD YEAR CLASS HISTORY

The three-year graduates number ninety-five, though the class started with one hundred twenty-five. Five members hail from Massachusetts; the rest are all "Mainiacs". This class has not had a very exciting history, as classes go, but it has been consistent in its high standard of classroom work, and has contributed outstanding leaders in every field of school activity. Perhaps not a little of its success is due to the fact that it has kept the same fine president, Edward Jess, for the three years of its existence. A good percentage of this class will return for degrees next year.



THREE YEAR GRADUATES



OFFICERS

President EDWARD JESS
Vice-president CARL HURD
Secretary HAZEL THAYER
Treasurer BILL JOHNSON

Edith May Atwood

May 1, 1938

A faithful, friendly, happy member of the third year class, whose passing has left a sincere note of grief in the hearts of Gorham students who mourn her death at this, our Commencement season.





Beatrice Alexander Hollis	Helen Allen Stonington
Ruth Anderson Dayton	*Edith Atwood Phippsburg
Calvin Austin Standish	Gertrude Baker Portland

THREE YEAR GRADUATES

BEATRICE ALEXANDER, whose weakness is playing the harmonica, is a commuter and a staunch member of the Commuters' Club. HELEN ALLEN has been a member of the Poetry, Art, and Commuters' Clubs for two years.



* Died May 1, 1938.

We just couldn't get along without that Ford, Helen. RUTH ANDERSON is a fine student and a fine girl. Her hobby is raising flowers. *EDITH ATWOOD has worked in the Library Club, the Outing Club, the Y. W., and Campfire, has also been a leader in Women's Athletics. CALVIN AUSTIN, captain of this year's famous Basketball team, has taken part in many activities. "Cal", though a quiet fellow, is everybody's friend. GERTRUDE BAKER, an outstanding student, was editor of the '37 GREEN AND WHITE, President of the Poetry Club, and a leader in several other fields. She was a delegate to the New York Conference this year. ALBERT BEHR and his funny little flivver are known and liked by everyone. We'd judge that his hobby is dancing. AGNES BICKFORD, who has been the first dormitory girl to reach Cortrell in the morning, showed her versatility by being active in many organizations, cultural and athletic. MARY BLAISDELL, "Scottie's" pal, seems very retiring, but she's not so quiet when you know her. ARTHUR BOSWELL has been especially active in the Dramatic and Glee Clubs, but is best known as "Bozzie", the famous cheer leader.



Albert Behr Ellsworth	Agnes Bickford Damariscotta
Mary Blaisdell Hallowell	Arthur Boswell Kittery



Barbara Brown Cape Elizabeth	Linwood Card Portland
Gertrude Chick Monmouth	Jane Christiansen Portland

BARBARA BROWN has been a faithful worker in several clubs, such as the Library Club, the Art Club, and Campfire. Our tall lad, LINWOOD CARD, was President of the Civic Committee last year, and a delegate to the New York Conference. He has much art ability, and would rather argue than eat. Aside from her classes, GERTRUDE CHICK has been actively interested in sports. Being fond of little children, she has taken the Kindergarten course. JANE CHRISTIANSEN has many interests, one of which is church suppers. She plays the saxophone and the clarinet. ELEANOR CLEAVES, who says her weakness is spending money, is characterized by her ready smile. She has been a member of the Dramatic Club. CECILE CLEMENT is musically inclined, and has a real gift in art. KENNETH COLEMAN, who came to us from the Eastern State Normal, has made a good record in the year he has been with us. MARY CULLINAN, a charming little colleen, has endeared herself to us all. She's been a member of the Poetry, Dramatic, and Glee Clubs.



NATHALIE CUNNINGHAM, witty and good-natured, has been interested in sports and in the Library Club. ESTHER DAVIS is fond of outdoor life and athletics, and is a baseball fan.

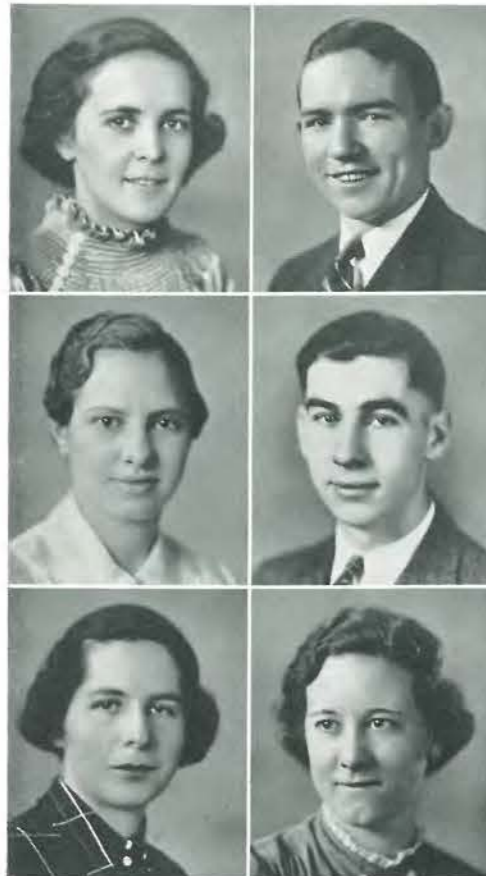
THREE YEAR GRADUATES



Eleanor Cleaves Sangerville	Cecile Clement Southwest Harbor
Kenneth Coleman Ellsworth	Mary Cullinan Portland
Nathalie Cunningham South Portland	Esther Davis Freeport



ANN GARDNER is a fine girl and a hard worker. She was President of the Civic Committee this year. She likes all sports, even cross-word puzzles. LOUISE GARLAND, a great lover of jokes, belonged to the Poetry, the Library, and the Glee Clubs. PHIL GERBER, the spectacular basketball player, has been outstanding in athletics during his course here. He's also a ping-pong artist.



Beatrice Doughty
Westbrook
Louise Eugley
Lincolnvile
Lorraine Fitzpatrick
Portland

Ernest Doyle
Thomaston
Blin Felker
North Anson
Evelyn Foster
Step Falls



Ann Gardner
Portland
Philip Gerber
Portland
Louise Garland
Dixfield
John Grindle
Bar Harbor

JOHN GRINDLE is a musician, and was President of the Orchestra this year. He was also a member of the Men's Glee Club and of the Y. M. C. A. Although she was always running out of gas, BEATRICE DOUGHTY got to school, did well in her classes, and helped out the Dramatic and Poetry Clubs. She writes poetry, too. ERNEST DOYLE, the "short of it", is the man who drives a famous car and famous commuters. He has played basketball and baseball, and has taken an active part in the Dramatic Club. LOUISE EUGLEY, who "forgot the meat", is one of the most dependable members of the class. She was a member of the Poetry Club and the Campfire. BLIN FELKER has played baseball, and his hobby is hunting and fishing. He has completed the Industrial Arts course. LORRAINE FITZPATRICK has been a successful cheer leader, and has been prominent in Women's Athletics. She has been a Poetry Club member. EVELYN FOSTER, short and sweet, has been another Poetry Club member. Her greatest delight is in horse racing.

PHIL GROVER is a friendly, good-natured chap, who has been interested in athletics. He was also a member of the Men's Glee Club. VIRGINIA HAGEN was President of the Women's Glee Club this year. She is a splendid violinist, and has made life a pleasanter thing because of her being here. ELEANOR HALEY, whose hobby is cooking, was a member of the Commuters' Club—a worker, too. HAZEL HALL came here this year from the Machias Normal School. She belonged to the Library Club. LOUISE HALL is interested in Women's Athletics, especially archery. Her ambition, she says, is to raise dogs. "SPIN" HILL is noted as a basketball player. He has also belonged to the Glee Club and the Commuters' Club, and has a fine scholarship record. KENNETH HOBBS is an Industrial Arts graduate, and his hobby is woodworking. He belonged to the Glee Club, and was President of the Y. M. this year. We all vote him to be "a fine fellow". MARY HODGKINS has been a member of the Glee Club and the Art Club.



Philip Grover
York Village
Eleanor Haley
Hollis Center

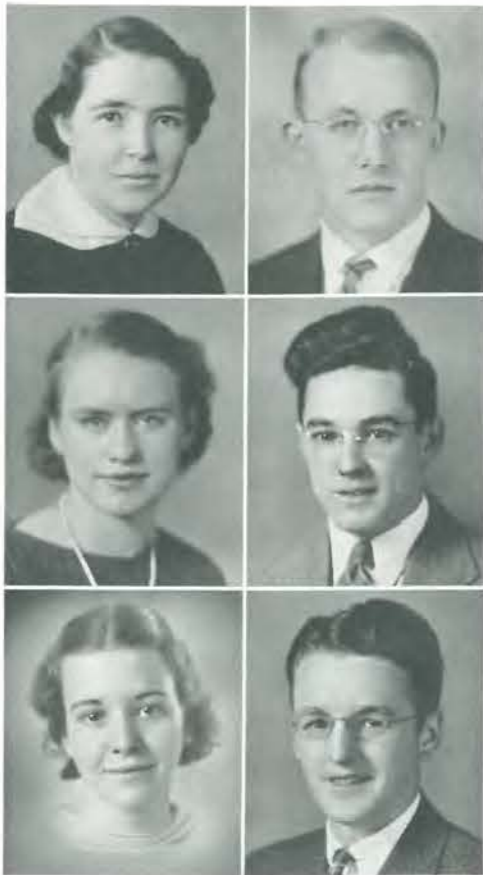
Virginia Hagen
Portland
Hazel Hall
East Machias



Louise Hall
Brewer
Kenneth Hobbs
Saco
Anna Honan
South Portland
Warren Hill
Buxton
Mary Hodgkins
Bath
Carl Hurd
South Acton

She is interested in Campcraft. ANNA HONAN is a commuter and has been an active member of the Commuters' Club. She is a fine pianist, and says that her weakness is Italian sandwiches. CARL HURD has been a commuter from Sanford, but his daily long journey has not interfered with his good work in the Industrial Arts department.





Mabel Huston Portland	Edward Jess Westbrook
Margaret Johnson West Scarborough	William Johnson Lewiston
Virginia Knowles Guilford	Carleton Landry Kennebunkport

MABEL HUSTON, known to her friends as "Husty", has been a member of the Poetry Club and the Y. W. Cabinet. She is interested in hockey and volley ball, too. EDWARD JESS was three times Class President. He is a quiet sort, and leads his classes, but has found time for Cross Country and Track. He was also a member of the Glee Club, and President of his fraternity.



MARGARET JOHNSON, "Johnny", is an active sportswoman, and was President of the Women's Athletic Board this year. She was a member of the Glee Club, and sang in the Double Quartette. WILLIAM JOHNSON is another Industrial Arts man whose hobby is woodworking. He was Inter-class Basketball Manager this year. VIRGINIA KNOWLES has worked on both the *Oracle* and the GREEN AND WHITE Boards. She has also played basketball and volley ball. CARLETON LANDRY has held many offices of distinction. This year he has been President of Lambda Pi Sigma, of the Glee Club, and of the York County Club. He has been a member of the Y. M. and the Dramatic Club. MAYBELLE LEACH has belonged to the Glee Club for three years. We know she is witty, and we've heard that her impersonations are great. DOROTHY LEAVITT was this year editor of the *Oracle* and President of the Dramatic Club. She was a member of the Poetry and the Commuters' Club. EDITH LEWIS is our capable, dependable pianist. She was President of the Glee Club and a member of the Orchestra and the String Trio. This year she was a member of the Y. W. Cabinet. ELEANOR LITTLEFIELD is another commuter, a conscientious student and a good friend.



Maybelle Leach Ashland	Dorothy Leavitt Portland
Edith Lewis Kittery	Eleanor Littlefield Westbrook



Rebecca Long Bluehill	Arlene Longfellow Hallowell
Charles Loomis Portland	Evelyn Lord Ogunquit

REBECCA LONG, who claims that talking, eating, and sleeping are her chief joys, has been a member of the Library Club for three years. She has also been active in the Y. W. ARLENE LONGFELLOW is known as a studious, generous girl, who is interested in raising flowers. She was a member of the Library Club and the Y. W. CHARLIE LOOMIS, an obliging, courteous gentleman, has been a member of the Cross Country Team for three years. He was associated with the GREEN AND WHITE Board, the Glee Club and the Commuters' Club. EVELYN LORD was President of the Y. W. this year, and has been a member of the Women's Athletic Board since she was a freshman. She has been active in sports. CHARLES MANCHESTER, whose hobbies are baseball and fishing, has belonged to the Commuters' Club and has taken part in intramural sports. MARIA McDONOUGH is another commuter. She is jolly and witty, and is good company. The Commuters' Club was her chief activity. PRISCILLA McISAAC played basketball and worked in the Art and Library Clubs her first two years, but this last year has given her attention to the Commuters' Club. MARIE McLAUGHLIN was this year's Presi-



dent of the Massachusetts Club. She's Irish and says she's superstitious. She plays tennis well. GEORGE MEE has a number of interests: machinery, taxi-dermy, and hunting. He's been another "long distance" commuter, and everyone knows what a fine chap he is. PAULY METCALF is a collector of dogs' pictures, miniatures, and the real thing. She belonged to the Poetry and Art Clubs—she's very artistic.



Charles Manchester Gorham	Maria McDonough Portland
Priscilla McIsaac Portland	Mary McLaughlin Lexington, Mass.
George Mee South Acton	Pauly Metcalf Augusta



PHYLLIS MORRELL has been a member of the Commuters' Club for three years. She is affectionately known as "Phil". MARY MORRIS, besides being a commuter, belonged to various organizations. Her ambition is to be a private secretary. ELVA MURRAY is fond of sports, and has identified herself with the Glee Club and the Y. W. "POLLY" MURRAY works in the Commuters'



Phyllis Morrell
Windham
Elva Murray
Cape Elizabeth
Helen Nason
Harmony

Mary Morris
Portland
Pauline Murray
Saco
Edythe Newcomb
Brewer



John Norton
Portland
Mildred Peabody
Windham

Rae Parady
Rumford
Miriam Peckham
Taunton, Mass.

Club. She likes to skate and to dance. HELEN NASON, the little girl who is always asking questions, is, nevertheless, a quiet, conscientious, dependable young lady. EDYTHE NEWCOMB has been a member of the Art Club, the Library Club, and the Y. W. Her hobby is collecting pictures. JOHN NORTON, a serious-minded young man from Portland, was Cross Country Manager and Dr. Russell's Day chairman this year. He is interested in anything that will better the human race. RAE PARADY was House Committee President and President of the Oxford County Club. She has been a member of the Poetry Club. She loves to dance—Big Apple is her specialty. MILDRED PEABODY has proved her musical ability in the Glee Club and Orchestra, and her dependability in the Commuters' Club. MIRIAM PECKHAM, generally known as "Peck", has of course belonged to the Massachusetts Club. She has also been a member of the Art and the Poetry Clubs. Favorite expression: "Wouldn't you die?"

GRACIE RANKIN, a member of the Commuters' Club and the York County Club, has also been interested in sports. It is said she is interested in Riverside scenes. LAWRENCE RAY, a boy with a dry sense of humor, has worked in the Y. M. and has distinguished himself in Track and Cross Country. STANLEY REED is fond of hunting, fishing and singing solos. He has been vitally interested in sports, played in the Orchestra, and been a member of the Y. M. EDITH ROSSBOROUGH has an enviable classroom record. She has belonged to the Commuters' Club, the Dramatic Club, and the York County Club. We are glad that she is coming back next year. You'd know ARLENE ROWE to be interested in sports just to see her. She's been a member of the Commuters' Club and has won the Frederick Robie Bird Prize. LOUISE SANBORN, who wants to be a traveler and explorer, has been in the Glee Club and the Y. W. for three years. PRISCILLA SAUNDERS is a member of the Campfire and the Knox County Club. Favorite expression: "Wait a minute!" HELEN SCOTT, or "Scottie", has made a fine record in



Gracie Rankin
Buxton
Stanley Reed
McKinley

Lawrence Ray
Etna
Edith Rossborough
Hollis Center



Arlene Rowe
Gorham
Priscilla Saunders
Rockland
Marjorie Shaw
Westbrook

Louise Sanborn
Standish
Helen Scott
Hallowell
Clifford Shea
Randolph, Mass.

Women's Athletics. She's a good referee, too. We have heard that her weakness is blondes. MARJORIE SHAW has worked on the GREEN AND WHITE Board, and has been a member of the Art Club and the Commuters' Club. Her hobby is dancing. CLIFFORD or "GRAMP" SHEA finds his chief pleasure in studying—even during weekends. He has played baseball and has been a member of the Dramatic Club.





Mary Smart Dexter	Agnes Spink Portland
Phyllis Stevens Acton	Virginia Swasey South Berwick
Doris Tainter Brooklin	Dorothy Thayer Windham

MARY SMART, whose chief pleasure is reading, has made a good record in women's sports: Archery, Baseball, and Volley Ball. She is a member of the Y. W. and the Outing Club. AGNES SPINK is also interested in athletics, and hopes to be a coach some day. She has

been on the Women's Athletic Council and is a member of the Commuters' Club. PHYLLIS STEVENS has belonged to the Y. W. Her hobby is skiing. VIRGINIA SWASEY is also a member of the Y. W. and the Superintendents' Day Committee. She writes letters and letters, and sleeps when possible. DORIS TAITER is fond of drawing, and she's good at it. She has belonged to the Outing Club and the Y. W. DOROTHY THAYER is another commuter, and has sung in the Glee Club for three years. She is hoping to be a famous singer some day. Her twin, HAZEL THAYER, has different talents. She is very artistic, but likes sports, too. She has been on the Oracle Board. MARY TOFT, who spent the first two years of her normal school career at Farmington, is a member of the Commuters' Club.



Hazel Thayer Windham	Mary Toft South Portland
-------------------------	-----------------------------



Betty Tufts Biddeford	Gladys Wagner Gorham
--------------------------	-------------------------

BETTY TUFTS, who has a B. S. degree from the Massachusetts School of Art, has been leader of the Campfire Training Course, and has been interested in hockey. "Doc's" strong and happy personality has brightened many dark days for us. GLADYS WAGNER has been a member of the Art Club and the Commuters' Club. "Glad" always has a smile and a ready answer for everyone. VIRGINIA WHEATON, another girl from Massachusetts, has been a member of the House Committee and the Glee Club. Her ambition is to be an organist. NORMA WIGGIN can ski and skate with skill. She played in the Orchestra, and belonged to the Outing Club and Campfire. She seems quiet, but her friends say, "Wait until you know her!" JEANNETTE WOODWARD has proved her dramatic ability this year in the Dramatic Club play. She belonged to the Commuters' Club. She's fond of poetry, and writes it. She is entirely at home on skis and in the water. Her hobby is rock gardening. MARIAN WOODWARD is the little girl with the big troubles. In spite of them, she's had time for the Y. W., the Outing Club, and Campfire. ADA YATES is quiet enough, but has been active in the Poetry Club and the Y. W., and has been a member of the House Committee.



MRS. NELLIE KNOTTS, from Newport, spent two years at the Aroostook State Normal School before coming to Gorham. Everyone likes and admires Mrs. Knotts, and we're glad she came here to finish her course. ANNE WHITMORE, a commuter from Portland, has played Basketball, and been a member of the Commuters' Club and the Outing Club.



Virginia Wheaton Ludlow, Mass.	
Norma Wiggin Portland	Jeannette Woodward Gorham
Marian Woodward Boothbay Harbor	Ada Yates Brunswick

SOPHOMORE CLASS



SOPHOMORE OFFICERS

President JOHN GRAVES
Vice-President DOROTHY BRAGDON
Secretary DONALD CRESSEY
Treasurer FLORENCE WOOD

HISTORY OF THE SOPHOMORE CLASS

The second-year class entered Gorham Normal School in the fall of 1936 with one hundred and fifteen members. During the first year little activity as a class group was done; however, many individuals began to gain prominence and take their places in the extra-curricular work. A great many joined the different clubs and took important parts in dramatics, glee clubs and on athletic teams. The boys placed letter-

men in cross-country, basketball, and baseball, following through to take the major cup for interclass athletic competition.

This year the class has taken on more duties and is publishing the GREEN AND WHITE in addition to general work. Those members of the cross-country, basketball, and baseball squads have become essential to the teams and members of the class took leading roles in the Dramatic Club play and the operetta presented by the music department. The girls of the Art class presented a tea and exhibit of the work done in that course, while later in the year the class as a whole presented a tea dance in Center. At present the class is preparing a one-act play to be presented in competition with the other classes.

All of this work has been educational as well as interesting and should result in better and more efficient teachers.



C1 DIVISION

Fourth row: L. Gibson, E. Grant, R. Geele, A. Hall, M. Hamilton, M. Blake, F. Knight, M. Berry, M. Ferguson.
 Third row: J. Billings, M. Cole, A. Elkins, P. Hall, E. Greene, J. Frank, M. Anderson, M. Clark, L. Grindle, S. Horn.
 Second row: V. Blake, E. Hodgkins, C. Chisholm, D. Bragdon, M. Dustin, R. Brown, P. Brown, M. Beal, M. Bragdon.
 Front row: H. Aikens, G. Albert, R. Dodge, D. Cressey, L. Bridg-ham, R. Anderson, B. Dennett, A. Foss.



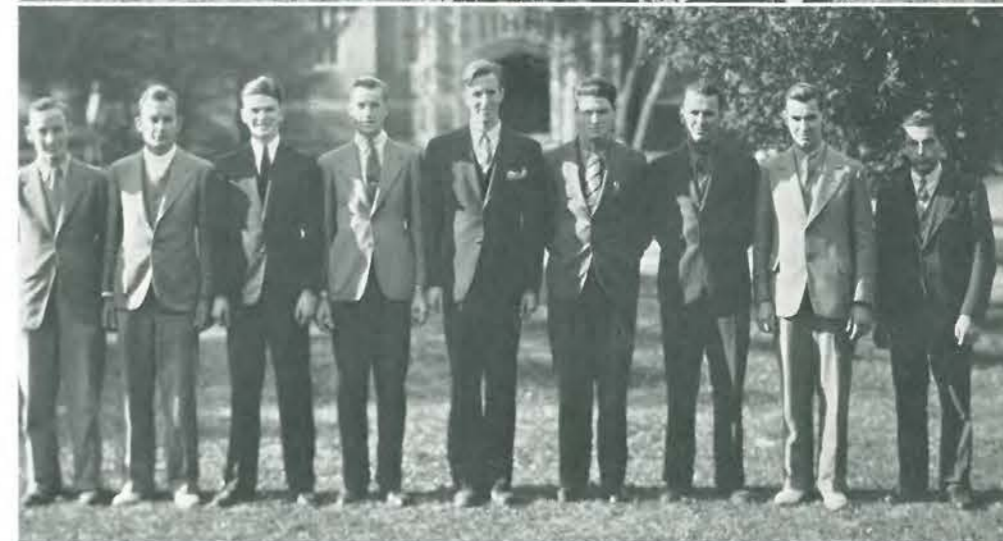
C2 DIVISION

Back row: P. McEachern, J. Wing, K. Rowe, A. Welton, B. Stanwood, M. Sanborn, T. Langevin, R. Longfellow, H. Worcester, M. Sherman.
 Third row: E. Silverman, E. West, M. Martin, H. Lord, R. Flanagan, D. Wiggin, E. Pinkham, G. Smith, M. Macdonald, E. Knight.
 Second row: L. Pelletier, L. Ross, H. Martin, B. Whitehouse, D. Knapton, I. Pike, R. Goodridge, J. Graves.
 Front row: G. Shaw, B. Welch, F. Wood.



C INDUSTRIAL ARTS

D. Hall, H. Hurd, T. Corrigan, O. Nesbit, J. Cambridge, R. Hanson, J. Brush, C. Rich, J. Peiffer.



FRESHMAN CLASS



FRESHMAN CLASS HISTORY

The school year 1937-1938 brought on the auspicious beginning of activity for the class of 1940 of Gorham Normal School.

September 13, 1937, one hundred and fifteen freshmen descended upon Gorham Normal School. After going through a skeleton program, their expectations were fulfilled and immediately they plunged into the maze of extra-curriculum activities.

Representatives in the Civic Committee were elected by the class and were Constance Furbush, Doris Whiteley, and Milton Chapman.

Representing our class on the *Oracle* Staff were Pauline Merrill, Lorraine Landry, Evelyn Ward, Dorothy McCarthy, and Joyce Katen.

One of the outstanding entertainments of the year was the operetta, "The Buccaneers." Many of the participants were of our class. Exceptionally proud were we



FRESHMAN OFFICERS

President MILTON CHAPMAN
Vice-President HELEN BROWN
Secretary CATHERINE GOFF
Treasurer WILLIAM BOLAND

of Donald Lindsay, Mary Skillin, Wilmer Van Blaricum, and Gordon Parritt, who contributed greatly to the successful performance.

Musically inclined contributors from the ranks of the class of 1940 were Harold Bent, who has entertained us with numerous cornet solos; Joyce Katen, clarinet player; Anita Dale, violinist for daily chapel programs; and Charlena Durgin, cellist in the newly formed instrumental trio.

Milton Chapman, who took the romantic lead as "Bob" in Noel Coward's play, "I'll Leave It To You," presented by the Dramatic Club, proved to be a good actor. Other members of the cast who rendered able assistance and were members of the freshman class were William Carey, Eunice Shevlin, Evelyn Ward, and the two prompters, Miriam Jones and Violet Gagne.

As to the question of sports, '40 has been no laggard. Stellar work in basketball was displayed by "Ray" Austin, brother of Captain "Cal" Austin, "Bill" Van Blaricum, "Ped" Gilley and Harold Charlton. We are counting on these, with the help of others of our class, for another New England championship title.

Other organizations in which the freshmen were active are the Athletic Associations, Y. W. and Y. M. C. A., the Library Club, Art Club, Dramatic Club, Glee Club, and Fraternities.

D INDUSTRIAL ARTS

Back row: R. Trask, G. Delorme, J. Hartford, P. Roberts.
 Front row: C. Gilley, H. Comber, G. Parritt, H. Bent, J. Greer, J. Sweet, D. Lindsey, E. Pernaveau.



D1 DIVISION

Fourth row: R. Edwards, M. Greene, R. Harper, V. Gagne, H. Hobbs, O. Chick, R. Berry, V. Foster, L. Fernald.
 Third row: E. Corliss, B. Nelson, M. Foley, C. Goff, C. Furbush, M. Buck, E. Bartlett, M. Flaherty, C. Greeley, C. Durgin.
 Second row: D. Jose, I. Hamblen, B. Johnston, A. Dale, F. Browne, B. Bourne, M. Davis, M. Costello, R. Johnson, M. Cornwell.
 Front row: E. Brown, E. Guy, L. Jones, M. Jones, R. Holbrook, R. Furrrough, V. Fitanides, M. Hagerman, J. Henry, M. Howland.



D2 DIVISION

Back row: M. McAllister, R. Miller, M. McPhee, I. Perreault, I. Morin, A. York, H. Morris, K. Kelley, P. Merrill, E. Ward.
 Third row: C. Reynolds, R. Thomas, J. Tibbetts, M. LaRochelle, A. Littlejohn, B. Pomeroy, E. Libby, J. MacDougall, E. Pinkham, M. Skillin, L. Landry.
 Second row: D. Worling, D. Sanborn, G. Roberts, M. Murphy, R. Milliken, R. Peterson, F. McRae, M. Vanier, D. Perreault, E. Keough.
 Front row: R. Luja, M. McCarthy, D. McCarthy, E. Shevlin, D. Whiteley, D. Walker, A. Norken.

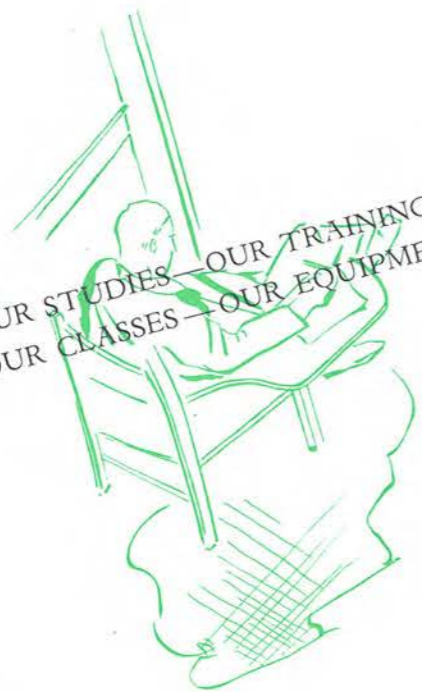


D3 DIVISION

Back row: D. Peacock, W. Carey, F. Crossman, A. Demers, W. Boland, D. Drossel, J. Castellucci, W. Van Blaricum, F. Griffith.
 Front row: P. Campbell, F. Mitchell, R. Hillman, N. Sawyer, G. Haddock, E. Young, W. Bowie, J. Mrowka, H. Charlton.



OUR STUDIES — OUR TRAINING —
OUR CLASSES — OUR EQUIPMENT



CURRICULA

TRAINING SCHOOLS



MARY LOUISE HASTINGS
Director of Training

The acknowledgment that we pay Miss Hastings may consist only of a few small words—little payment for her years of service and guidance. Nevertheless, we feel sincere in our expression of appreciation.

Our wish is that our records will reflect her patient care and affection after we leave the molder's hands.



State Normal School,
Gorham, Maine,
April 23, 1938.

Dear Prospective Teachers:

The person who guides boys and girls must possess manly and womanly qualities himself, so, first of all, be somebody. It is what you are that gets into boys and girls. Be a teacher of ideas worth remembering and ideals worth following. Use all the improved tools of learning that are available but use them to interpret human needs and values. Work with others to bring about good working conditions for your pupils.

May your teaching be a happy experience for you and your pupils.

Sincerely yours,

MARY L. HASTINGS,
Director of Training

THE JUNIOR HIGH SCHOOL

An integral part of the Gorham Normal is the Junior High School, established in 1926. The grades in this training school range from the Kindergarten through the ninth grade, and comprise the largest single training unit in our system. The building itself is of red brick, and is modern throughout. Besides classrooms, it contains a large auditorium, a library, a cafeteria, and office rooms. At one time the training school carried out the plan of having all the girls in one part of the building and boys in the other. As the population of Gorham has increased and several nearby rural schools have been closed, the school has grown until now it boasts of a student body of approximately 330 pupils and a faculty of eleven teachers.



Although the Junior High School has been established primarily as a school for the children of the village, it affords an excellent opportunity for student training. Through it, Normal School students observe the best methods and procedures in conducting lessons and in handling actual everyday situations in the school room.

Each student has an opportunity to do eighteen weeks of practice teaching in either the Junior High School or one of the other elementary schools affiliated with our training system.



The Junior High School



THE MONOGRAM POINT SYSTEM

A good general view of the plan to develop well-rounded citizens may be had by examining the Monogram Point System, which is in operation in the Junior High School. Points are given for many different attainments, and in order to receive the Monogram award, a pupil must receive a total of 200 points. Only twenty-two pupils have received the highest award.

MONOGRAM POINT SCHEDULE

PHYSICAL

1. Making one or more of the class league teams, 10
2. Making one or more of the school teams (boys only), 25
3. The correction or marked improvement of physical defect, 5-15
4. Making an average of A in physical culture for the year, 3-12
5. Presenting evidence of having taken part in organized hikes, 3-24
6. Giving proof of knowing scientific health rules in diet, sleep and cleanliness (2 each quarter), 6-24

7. Winning 6 or 7 point badge, 5
8. Winning first P. R. A. badge, 5
9. Winning second P. R. A. badge, 10
10. Winning third P. R. A. badge, 20

MENTAL

1. Being on the honor roll (at least B's in major subjects), 5-20
2. Taking part in an assembly program or spelling contest, 1-20
3. Composing an accepted school or class play, song, yell, 5-20
4. Receiving no E for a quarter, 5
5. Each A in a major subject for the quarter, 3
6. Each B, 2
7. Each C, 1

SOCIAL

1. Being an active member of the school club or orchestra, 5-20
2. Acting efficiently as class official or doing efficient committee work, 5-20
3. Making marked physical, mental or moral improvement, 5-20
4. Perfect attendance for the quarter (no tardiness), 10-40
5. Each person in the room having the best attendance for the year, 2-8
6. Not being tardy for the quarter (no extra if under 5), 5-20

MORAL

1. Receiving an average not less than A in Self-Control, 5-20
2. Receiving an average not less than B in Self-Control, 3-12
3. Attested excellent membership in Boy Scouts, Campfire, 4-H Clubs, or Grange, 5-20
4. Certified regular attendance at Sunday School, Church or Young People's Meetings, 5-20

Activities in the Training School



Boy Scouts
Library Corner

Library
Art Class

Classroom Scene
Class Debate

Folk Dancing
Traffic Patrol

JUNIOR HIGH SCHOOL FACULTY

Hayden L. V. Anderson, Principal
 Harriette G. Trask, Grades 7, 8, and 9
 Lona A. Pride, Grades 7, 8, and 9
 Celia N. Gross, Grades 5 and 6
 Mary Peabody, Grades 3 and 4
 L. Alice Wetherell, Grades 1 and 2
 Lois E. Pike, Junior Primary
 Emma F. Harris, Kindergarten

Assistant Supervisors

Bertha Frost, Grade 5
 Virginia Knight, Grade 4
 Ruth Gilpatrick, Grade 2

ADDITIONAL TRAINING SCHOOLS

SOUTH PORTLAND

Henley School
 Pleasant Street School
 Willard Street School

WESTBROOK SCHOOLS

Forest Street School
 Bridge Street School
 Saco Street School
 Brown Street School

RURAL SCHOOLS AND SUPERVISORS

West Gorham (model rural school)—
 Miss Mary Pederson
 Elmwood School—Miss Carolyn Tol-
 lefson

North Scarborough School—Mrs. Mildred
 Dow
 Libby School—Miss Mary Stevens



Rural Schools

TRAINING SCHOOLS

HENLEY SCHOOL, SOUTH PORTLAND

One feature that distinguishes the Henley School from most grammar schools is its yearly program of social activities, in which both the pupils and teachers participate. A second difference is the sponsorship of a club by each room in the upper grades; each club has an aim of educational value or social and civic betterment for the pupils and the school.

BRIDGE STREET SCHOOL, WESTBROOK

The Bridge Street School is one of our largest training schools, having an enrollment of about 300 pupils, and a supervising faculty of eight teachers. This school provides an ordinary city school environment.

SACO STREET SCHOOL

Saco Street School serves as another training school for Gorham students. The sub-primary, taught by Miss Mildred Bell, and the first grade, taught by Mrs. Margaret Hurd, are on the first floor. The second and third grades, taught by Mrs. Ansel Sterling, the principal, occupy the second floor.



THE RURAL TRAINING SCHOOLS

THE MODEL RURAL SCHOOL, WEST GORHAM

The model rural school located at West Gorham, two miles from the Normal School on the Ossipee Trail, is much sought for as a practice teaching assignment. It is there that Miss Stone brings classes to observe modern rural school equipment and methods in rural education. Miss Mary Pederson, the teacher in charge, succeeds in making West Gorham one of the finest of Maine's rural schools.

THE ELMWOOD SCHOOL, SOUTH GORHAM

The Elmwood School is a typical rural school containing a sub-primary class and the first four grades. There is a particularly wholesome and coöperative atmosphere in this school, and many of our graduates have received excellent training here.

THE LIBBY SCHOOL

Six miles south of Gorham we find another of our rural schools. Libby School under the capable charge of Mrs. Mary D.



Stevens. Mrs. Stevens has between 45 and 55 pupils in a one-room building. The pupils belong to 4-H Clubs and other clubs among themselves, mostly social. The boys enjoy baseball and football as well as track and field events. There are no organized teams because of the dearth of boys of one size.

THE NORTH SCARBORO SCHOOL

The North Scarboro School is a very small one but its size does not correctly portray the amount of life that its four walls see each school day. One interesting feature of the school is the harmonica band which Mrs. Dow has organized with amazing success. Nine weeks' training here gives Gorham students a clear idea of what is expected of a model rural school teacher.

Some Rural Schools



West Gorham School
Libby School

North Scarboro School
West Gorham School



PREPARED?

If you had studied that Mathematics lesson last night instead of listening to the radio or talking to your roommate, you'll envy Anne Welton's chance to get an A. But what a state of mind you're in if you're not prepared—does your heart thump?

IN THE GYM

All of our training is not received by poring over books—some of it we get in this gay and fascinating manner pictured below. We're graceful and graceless, but we're learning a lot and having a good time.

BASKETRY

Away up under the eaves is a room devoted to doing all sorts of handwork—basketry, sand tables, weaving, notebook making—all sorts of projects which give us great satisfaction and surely teach us a lot.

IN THE LIBRARY

Don't you recall the many studious hours and some not so studious—that you spent in our large, well-equipped library? Do you remember any such things as book fines, missing magazines, and reserve books you forgot to get? Anyway, you did appreciate the helpful service and the abundant sources of material in this center of our school's curricular life.

Some Classroom Scenes



The Library
Folk Dancing

Mathematics Class
Industrial Arts Class

CIVIC COMMITTEE OFFICERS

President ANN GARDNER
Vice-President CLIFFORD SHEA
Secretary-Treasurer MARGERY SHAW
Faculty Advisers—MISS MARY HASTINGS,
 MR. EVERETT PACKARD AND MR.
 LOUIS JENSEN

The Civic Committee, one of the most active and worthwhile organizations of the Gorham Normal School, is, as its name suggests, a "Civic" or democratic governing body. It is composed of three faculty members or advisers, Miss Mary Hastings, Mr. Everett Packard, and Mr. Louis Jensen, and a student delegate from each club or organization of the school.

Its purpose is to promote a better understanding and more congenial relationship between faculty and student body. Once a student becomes a member of the Civic Committee, he remains a member during his attendance at the Gorham Normal School, unless through resignation or two successive unexcused absences he loses this privilege. Meetings, which are held on alternate Thursdays, are in the form of a forum, at which time each member has an equal opportunity to participate.

In addition to assuming responsibility for carrying out such activities as Superintendents' Day, Etiquette Week, First Chapel, Dr. Russell's Day, and N. Y. Conference Delegation, the Civic Committee from time to time initiates and sponsors various projects for which a need is felt, or which are in keeping with the purpose and spirit of the school.



Rose Flanagan, Grace Perry, Gertrude Baker



GORHAM — NORMAL — AT — PLAY —
 MEN'S AND WOMEN'S ATHLETICS
 — CLUBS — MUSIC — FRATERNI-
 TIES — PUBLICATIONS



EXTRA CURRICULA



Women's Athletic Board

Left to right: Lorraine Fitzpatrick, Constance Furbush, Betty Tufts, Helen Brown, Dot Wiggin, Georgia Smith, Jeanette Billings, Jean Brown, Ruth Brown.

WOMEN'S ATHLETIC ASSOCIATION

The Women's Athletic Association Board is made up of representatives from each branch of women's athletics. Each fall this board assists the Men's Athletic Association to carry out the Dr. Russell's Day program. During the year they sponsor dormitory tournaments, class tournaments, game nights, and banquets.

This year a new plan has been tried and has met with a great deal of success. After the regular schedule of games has been played in hockey, basketball, and volleyball, a Green team and a White team have been selected. These teams play one game and the winner is acclaimed champion for the particular season.

As a result of a few amendments to the constitution, more people have been made

eligible for awards. The Freshmen hold the record for having the largest number participating in class games.

We should pay special tribute to "Johnny" Johnson, president of the W. A. A., for making the annual game night such an enjoyable affair. We should also mention Miss Flint, our faculty adviser, and the rest of the W. A. A. board for making the women's athletic program so interesting and valuable to all of us.

This year, for the first time, horseback riding has been officially considered a part of the W. A. A. program. Each week in the fall and spring the group is transported to Rines' Riding Stables, where they enjoy an hour or more of riding along highways and byways.

This year, also for the first time, the Outing Club has operated under its new name. It was formerly known as the Outdoor Club.



BASKETBALL

The second year team won the basketball championship after a series of fast and exciting games. The freshman team stars from Gorham High and Cape Elizabeth High led both upperclass teams in a merry chase and very nearly upset all predictions. Dot Wiggin — dependable forward. Rose Flanagan — former Rockland High star, Jean Brown and Mertice Berry—inseparable guards, were responsible for the second year team's winnings. In the third year list are such people as Helen Scott, Evelyn Lord, and Betty Tufts.

In addition to basketball games this year, several girls are taking a course in umpiring with Miss Flint acting as the instructor. Each one has an opportunity to umpire several games during the season.



ABOVE: HONORARY BASKETBALL TEAM

Back row: Anne Welton, Betty Tufts, Evelyn Lord, Ruth Brown.

Second row: Kathleen Rowe, Mertice Berry, Jean Brown, Jeanette Billings.

Front row: Hazel Thayer, Jeanette Woodward, Helen Scott.

BELOW: TOURNAMENT FINISHERS

Back row: Edith Silverman, Cecil Clement, Jeanette Tibbets, Ruth Berry.

Front row: Jane Christiansen, Pauline Merrill, Helen Brown.

TENNIS

Each fall and spring a ladder tournament is carried on for all those interested in tennis. Gorham can boast of three well-kept tennis courts, and someone in action on them most of the time—even before breakfast on warm spring mornings. Dot Wiggin is the outstanding player from the Commuters and Helen Brown from the dormitory, although there are many others very much interested. Jane Christiansen has been very valuable as tennis councillor this year, especially to the members of the beginners' group. She will be succeeded by Helen Brown.

HOCKEY

Besides winning the basketball tournament, the C classes came out first in the hockey games. Again the upperclassmen found the scrappy freshman team hard to defeat. Again, too, we find Emma Libby and Jean MacDougall starring for the first year team. We will remember Doc Tufts for always being where she belonged. The C's owe much of their success to Rose Flanagan and Anne Welton, speedy linesmen, who were always ahead and ready for a goal.



GREEN AND WHITE HOCKEY SQUAD
ARCHERY
HORSEBACK RIDERS

The final game between the Green and the White teams was fast and exciting. So evenly matched were the teams that the game ended in a tie. Even Miss Flint confessed that they were ahead of her once or twice. Besides those already mentioned, the honorary varsity team was made up of Agnes Bickford, Margaret Johnson, Lorraine Fitzpatrick, Gertrude Chick, Mabel Houston, Madelyn Buck, and Ruth Brown.

ARCHERY

Evelyn Lord, record setter and in turn record breaker, had many enthusiastic followers with the quiver and bow. Twice a week or oftener, from 3.30 to 4.30, this group shot with Evelyn, with Miss Flint to guide beginners. Esther West, "Ginnie" Hagen, Mary Bragdon, and Edythe Newcomb made up the upperclass team. The freshmen, led by the Jones girls, Charlena Durgin and Rita Luja, advanced rapidly and became active participants in the Green and White tournament. Evelyn Lord won the tournament with a score of 381. Esther West and "Ginnie" Hagen were the next two in line and were awarded numerals.

RIDING

It was a common sight last fall to see about eight girls in riding breeches, waiting on Robie Hall steps for a car to take them to the riding stables. Once a week these girls rode through wooded trails with Miss Flint or Betty Tufts in charge. This is the smallest branch of the W. A. A. but it has made excellent progress for the short time they have been organized and it is hoped that another year will bring still more riders. Besides those already mentioned, Dot Bragdon, Ruth Johnson, and Ada Yates are outstanding followers of this group.



Action on the Court

INTRAMURALS

OUTING CLUB

The Outing Club is the largest organized group of the Women's Athletic Association. Twice a week you may see a group of girls leaving Robie Hall for a tramp in the woods, a skating party, a picnic, a bird walk or skiing party.

This club was responsible for the skiing classes held at noontime and after school hours. They secured John Cambridge, a member of the Deering Ski Club, for the instructor. There's nothing like an afternoon of skiing to put a person in shape for examination week—ask Marge Howland or Polly Merrill if they don't think so.

Each year letters are awarded to members who complete a given number of hikes or the equivalent in skating or skiing. An organization of this sort gives every Gorham woman a chance to earn a letter even if she isn't a star on the court or hockey field.

CAMP FIRE

Doc Tufts has made the Camp Fire Girls worth about four times what it formerly was—in membership, activity, and worth-

whileness. The meetings are held each week in Corthell Hall. Several times Mrs. Spear, Executive Secretary of the Western Maine Council of Camp Fire Girls, has spoken to the group at these meetings. Outdoor work with younger girls has been the main topic of discussion.

One of the outstanding activities of the year was the production of a marionette show under Doc's supervision for the local Camp Fire Girls group.

The aim of this branch of women's athletics is to make Gorham Normal School graduates better fitted for leadership in 4-H Clubs, Girl Scouts, Girl Reserves, or Camp Fire Girls.





1937 Cross Country Squad

Back row: D. Lindsey, T. Corrigan.
 Second row: Coach Packard, G. Albert, J. Greer, W. Bowie, H. Charlton, Manager H. Aikens.
 Front row: P. Baldwin, W. Carey, E. Jess, J. Cambridge, K. Hobbs, D. Knapton, B. Curtis.

CROSS COUNTRY

SUMMARY AND LETTERS

VARSITY SUMMARY

Farmington Normal, 15	Gorham,	47
Bridgton Academy, 26	Gorham,	31
Bridgton Academy, 25	Gorham,	31
Farmington Normal, 15	Gorham,	50

JUNIOR VARSITY

Deering H. S., 15	Gorham JV,	45
Scarboro H. S., 23	Gorham JV,	38
Portland H. S., 16	Gorham JV,	47
Scarboro H. S., 25	Gorham JV,	27

Members of the varsity squad included Jess, Cambridge, Hobbs, Knapton, Curtis, Carey, Reed, Mee, Ross, and Baldwin. Junior Varsity: Albert, Greer, Bowie, Charlton, Lindsey, and Corrigan.

Letters were awarded to Manager John Norton, Edward Jess, Stanley Reed, Kenneth Hobbs, and Charles Loomis, of the class of 1938; John Cambridge and Burton Curtis, Honorary Captain of the class of 1939.

Certificates were awarded to George Mee, class of 1938; Donald Knapton,



Lewis Ross, Paul Baldwin, George Albert, Thomas Corrigan, and Assistant Manager Harold Aikens, of the class of 1939; Greer, Bowie, Charlton, Lindsey, and Carey, of the class of 1940.

An interclass cross country meet was held near the end of the season and was won by the Juniors.

"A player must be a good loser as well as a winner." Thus, if we were to combine the results of Cross Country and Basketball together, there would be a summary well balanced with defeats, losses, and personalities.

We entered our "without a victory" season on our own course against Farmington Normal. We failed to get our "second wind" and Farmington placed her first five men well in front of ours. Bridgton's harriers set a pace much nearer our own and after rationalizing on the trip back we decided that the meet would have been ours if Eddie Jess, last year's captain and this year's pacemaker, had been present and "Soldier" Carey had not thrown a shoe.

Lettermen graduating this year are Eddie Jess, Stanley Reed, and "Ken" Hobbs. Curtis, Cambridge, Baldwin, lettermen; Knapton, Carey, and Lindsey will form the nucleus of Coach Packard's next team.

In spite of the many losses, the team showed that spirit of cooperation and loyalty to Gorham Normal that characterizes our Coach of cross country.

Coach Louis Jensen, a new member to the faculty, showed his ability in coaching when he created Gorham's first championship team in the New England Teachers' College Conference.

Its debut in the league resulted in an easy victory over Rhode Island. Phil Gerber started his most successful season by filling the basket with 14 points.

Our hoopsters then journeyed on to New Britain, Connecticut, to hand that aggregation its first conference loss suffered in five years of conference play. Austin's timely basket broke a last minute tie and the Green and Whites went on to victory.

Austin and Gerber led the team through two more victories over Fitchburg and Hyannis Teachers.

With the championship spirit now thoroughly felt throughout the school, the Green and Whites had little difficulty in overcoming Farmington's early lead and going on to win the game. This same spirit carried them to victory through two more games, one with Keene and another with Salem, in which "Bones" Knapton amassed 21 points, the highest single total in any one game.

Keene Normal gave Gorham its first reverse in the Conference League, but this merely stimulated the fighting spirit of our championship aggregation to a win over Farmington in the last Conference game of the season.

SUMMARY AND LETTERS

Coach: Louis Jensen.

Summary:

Gorham Normal, 54; Portland Junior College, 34.

1937-38 Basketball Team



Back row: H. Charlton, W. Van Blaricum, C. Rines, P. Baldwin, C. Gilley.
 Front row: C. Austin, D. Knapton, J. Ham, P. Gerber, K. Higgins, D. Webb, Coach Jensen.



- *Gorham Normal, 59; Rhode Island College of Education, 39.
- *Gorham Normal, 47; Connecticut Teachers' College, 39.
- *Gorham Normal, 54; Fitchburg (Mass.) Teachers' College, 36.
- *Gorham Normal, 46; Farmington Normal School, 42.
- Gorham Normal, 41; New Hampshire Frosh, 47.
- *Gorham Normal, 62; Keene (N. H.) Teachers' College, 45.
- *Gorham Normal, 56; Salem (Mass.) Teachers' College, 35.
- Gorham Normal, 35; Madawaska Training School, 30.
- Gorham Normal, 24; Tilton (N. H.) Junior College, 46.
- *Gorham Normal, 42; Keene (N. H.) Teachers' College, 45.
- *Gorham Normal, 44; Farmington Normal School, 42.
- Gorham Normal, 35; Aroostook State Normal School, 37.
- *Gorham Normal, 41; Hyannis (Mass.) Teachers' College, 28.

Totals: Gorham, 637; Opponents, 545.

The team won 8 and lost 1 conference game for a percentage of .888. "Phil" Gerber was chosen as one of the forwards on the Conference All Team. "Cal" Austin was chosen as one of the guards on the reserve team.

BASKETBALL



SUMMARY AND LETTERS

CLIFFORD O. T. WIEDEN, *Coach*
 KARLTON HIGGINS, *Captain*
 STANLEY GAY, *Manager*

Summary:

C Gorham Normal, 8; Salem Teachers, 7.
 C Gorham Normal, 8; Rhode Island College of Education, 2.
 Gorham Normal, 17; Portland Junior College, 1.
 Gorham Normal, 1; Bridgton Academy, 12.
 C Gorham Normal, 3; Keene Normal, 5.
 C Gorham Normal, 3; Keene Normal, 10.
 C Gorham Normal, 0; Rhode Island College of Education, 1.
 C Conference games.

Letters were awarded by Coach Wieden to Austin, Peters, Rines, Crockett, Higgins, Felker, Doyle, Whitehouse, Gerber.

Certificates were awarded to Grover, Baldwin, Ross, Shea, Curtis, Reed, Nesbit, Albert, Corrigan, Knapton, Manchester, Boswell, Bridgman, Cressey.

Lettermen returning: Felker, Doyle, Higgins, Austin, Whitehouse, Gerber, Rines.

Interclass letter for managership, H. Libby.

BASEBALL

1937 Baseball Team



Back row: J. Cambridge, D. Knapton, C. Manchester, Mr. Wieden, Coach, G. Albert, T. Corrigan.
 Middle row: S. Reed, P. Grover, B. Whitehouse, B. Curtis, C. Shay, P. Baldwin.
 Front row: C. Austin, C. Peters, C. Rines, K. Crockett, K. Higgins, P. Gerber, E. Doyle, B. Felker.

"If March comes in like a lion, she must go out like a lamb." Thus it was with last season's baseball team. But in spite of the fact that the closing games were heart-breaking, the season ended with a record of three losses and two wins.

Cal Austin let the opposing team down with only seven hits in the opening game at Salem Teachers' College. Blin Felker, Captain, took the batting honors of the day with a long triple.

Gorham's second victory was over Rhode Island College of Education. Keith Crockett, Gorham's star outfielder, gathered three hits out of five times at bat.

In a non-conference game Coach Wieden used the entire squad to defeat Portland Junior College. Burt Whitehouse batted for a thousand and was responsible for six runs.

Gorham received her outstanding defeat at Bridgton Academy. The hits were so few that Coach Wieden could easily award one genuine horsehide for each safe bingle.

Cal Austin did some outstanding twirling at both of the Keene games, but his teammates failed to get him enough scores for a victory.

The season ended at Providence with Captain "Gus" Higgins giving a fine exhibition on the mound. The big stickers could not bunch their hits and the game was lost, 1 to 0.

Captain Gus, with his infinite quantity of wit, kept the morale of the team at its highest on each of the four spring trips taken.

G. N. S. SPORT PARADE OR ATHLETICS

The Gorham Normal School has a dual athletic program. One phase is that of interscholastic competition, while the other is interclass play. The interscholastic program is offered for those young men who wish to specialize in athletics in order that they may do work in coaching. The interclass program is carried on so that young men who do not care to participate in interscholastic competition may have some means of getting beneficial exercise and relaxation and also learn something about athletics that may make them better teachers. The major sports are cross country, baseball, and basketball. The minor sports are softball, horseshoes, tennis, ping-pong, and an interclass track meet.

The different classes are represented in minor sports by class teams. Each class has a major and minor team.

The 1937 G. N. S. Cross Country squad had a disappointing season, due to injuries acquired by many of the good runners.

The '37-'38 basketball squad was the finest in the history of the school. The squad had many good basketball men who had much previous experience. In the New England Teachers' College Conference, Gorham Normal, which is a member, had nine victories against one defeat. This feat made them New England Teachers' College Conference Champions.

The baseball team for this year is just getting ready to start its season. The hopes for the team are high. Many players are lettermen of previous years who should come through.

The Junior Class was the interclass champions in 1937.

The Cross Country teams are coached by Mr. Everett S. Packard. Baseball and Basketball are coached by Mr. Louis Jensen.

The Athletic Director is Mr. Clifford O. T. Wieden.

Outstanding athletic performances were turned in this year in Cross Country by Jess, Cambridge, Ross, Hobbs, Carey, and Mee. In Basketball by Ham, Higgins, Webb, Knapton, Austin, Gerber, Rines, and Baldwin.



Moving In High Gear For Gorham Normal



ORGANIZATIONS

THE COMMUTERS' CLUB

President HOWARD HURD
 Vice-President ROBERT ANDERSON
 Secretary RUTH ANDERSON
 Treasurer ARLENE ROWE

One of the biggest organizations of the school, established primarily for the purpose of organizing as a whole the group of people who do not live in the dormitory. The club rates high in popularity, and both student body and faculty members

look forward to those delicious lunches sponsored by the club during noon hours. Activities of the club are lunches, a dance, a picnic, a chapel program, a room for the young women of the club in the dormitory, and games at noontime in the gymnasium. Miss Elizabeth Hale is the faculty adviser. All commuters are eligible to become members of this organization. Meetings are held once a week in Cortwell Hall. The commuters on the whole are a happy, carefree lot of young women and men.

COMMUTERS



THE COMMUTERS' CLUB

Back row: A. Gardner, M. Macdonald, J. Jordan, P. Gerber, R. Staples, L. Card, F. Tupper, M. Rowe, K. Jordan, J. Ham, J. Cambridge, M. Sylvester, E. Rossborough.
 Fourth row: I. Page, C. Greeley, C. Goff, M. Foley, R. Milliken, J. MacDougall, D. Leavitt, W. Hill, P. Tarbox, J. Hurd, C. Kelley, J. Norton.
 Third row: M. Cullinan, P. Murray, J. Katen, E. Littlefield, L. Landry, D. Jose, G. Shaw, A. Whitmore, M. McDonough, B. Doughty, C. Manchester, C. Rines, E. Doyle.
 Second row: M. Sanborn, M. Martin, E. Woods, K. Rowe, R. Anderson, H. Hurd, R. Anderson, R. French, A. Honan, E. Atwood.
 Front row: D. Lindsey, B. Whitehouse, D. Knapton, J. Graves, R. Goodridge, R. Dodge, G. Albert, A. Foss, B. Dennett, I. Pike, T. Corrigan, L. Ross.

THE POETRY CLUB

Here you see the Poetry Club in formation for a regular meeting. We can believe it's a good program.



THE DRAMATIC CLUB

A play rehearsal is not a very glamorous thing, but hard work becomes a pleasure when the creation of a play is its object.



THE ART CLUB

Everyone keeps busy in his own way when the Art Club meets. Here again a student group finds pleasure in creative work.



COMMUTERS AT LUNCH

The Commuters keep as busy as anybody else all day, but the daily lunch hour is pretty important as a social occasion.



Poetry Club in Session
 Dramatic Club Rehearsal
 Art Club at Work
 Lunch Commuters



THE POETRY CLUB

Back row: M. Macdonald, M. Ferguson, P. Metcalf, R. Flanagan, R. Parady, H. Lord, D. Leavitt, J. Brown.
 Third row: J. Sherburne, R. Brown, I. Page, C. Chisholm, E. Knight, M. Sylvester, J. Jordan.
 Second row: M. Huston, A. Welton, C. Clement, G. Perry, M. Peckham, L. Garland, F. Fitzpatrick, A. Bickford, R. Longfellow, B. Stanwood.
 Front row: J. Wing, E. Foster, M. Dustin, G. Baker, J. Christiansen, M. Cullinan, L. Eugley, T. Langevin, B. Doughty.



THE ART CLUB

Back row: B. Brown, E. Bartlett, M. Skillin, M. Anderson, J. Brush, H. Hurd, E. Perneveau, J. Sweet, W. Bowie, I. Pike.
 Third row: G. Albert, H. Worcester, M. Sanborn, M. Clark, P. Roberts, J. Sherburne, M. Vanier, M. McPhee, H. Bent.
 Second row: M. Hagerman, I. Frank, P. Brown, L. Pelletier, C. Chisholm, V. Gagne, E. Shevlin, H. Morris, B. Stanwood, G. Parritt.
 Front row: M. Sherman, M. Peckham, J. Peiffer, T. Langevin, P. Metcalf, M. Hodgkins, C. Rich, P. McEachern, M. Howland.

THE POETRY CLUB

President GERTRUDE BAKER
 Vice-President LOUISE EUGLEY
 Secretary MARY CULLINAN
 Treasurer JANE CHRISTIANSEN

The most popular club in the school, according to its members. They are chosen each year from a long waiting list. This intellectual club studies and develops an appreciation of poetry, causing an inspiration for creative work. Each Christmas they perform a kind deed; that of sending Christmas boxes to poor rural schools. In addition to these projects, a Mother's Day program is presented in Chapel. The club

has made a special study of choral reading this year. The club meetings are unique in arrangement, the seating plan is circular, giving a round table effect. Miss Lewis is the faculty adviser.

THE ART CLUB

President EUGENE PERNEVEAU
 Vice-President HELEN ALLEN
 Secretary FRANCES KNIGHT
 Treasurer CARROLL RICH

"If you are interested in art but cannot draw, sketch, or paint, become a member of the Art Club, we will teach you." This is the call issued each year, and it is answered by the beginners and the masters. The club provides an excellent opportunity for those interested in art to enjoy work not included in the regular art course. Weekly meetings are held in the regular art room. The club presents a chapel program, a dance, entertains a visiting basketball team, and arranges for art exhibits to which the school is invited. Miss Vietrie is the faculty adviser.

THE DRAMATIC CLUB

President DOROTHY LEAVITT
 Vice-President MARY CULLINAN
 Secretary MADELINE MACDONALD
 Treasurer BURTON CURTIS

Do you want to be an actor? Yes? Then try out for the Dramatic Club. The purpose of this club is to discover and cultivate talent, to afford the student more opportunities for self-expression, and to provide keen enjoyment for everyone. Different groups within the club put on one-act plays for presentations at meetings. Other activities are chapel programs, a banquet, and an annual play. The play this year was "I'll Leave It To You," by Noel Coward. Mr. Chester Sloat is the coach whose tireless efforts aided in the production. Mr. Sloat is the faculty adviser.



THE LIBRARY CLUB

President MARGARET ANDERSON
 Vice-President THERESA LANGEVIN
 Secretary BARBARA BROWN
 Treasurer REBECCA LONG

The purpose of this organization is to keep its members well acquainted with the literature of the past and the present. This club is under the able supervision of the school's librarian, Miss Eames. A chapel program is offered each year by its members to the school. Prominent speakers review books and are entertained by this organization.

THE DRAMATIC CLUB

Back row: C. Higgins, L. Card, J. Brush, H. Charlton, W. Carey, A. Doe.
 Third row: G. Albert, L. Bridgham, M. Berry, L. Landry, M. Jones, E. Ward, E. Shevlin, E. Doyle.
 Second row: B. Johnston, J. MacDougall, R. Holbrook, A. Welton, E. Cleaves, B. Tufts, R. Edwards, J. Jordan, V. Gagne.
 Front row: A. Boswell, G. Perry, M. Cullinan, D. Leavitt, B. Curtis, M. Macdonald, G. Baker.



THE LIBRARY CLUB

Back row: L. Garland, M. Cole, E. Bartlett, N. Cunningham, E. Shevlin, M. LaRochelle, M. McIntyre, E. Davis.
 Second row: E. Atwood, M. Murphy, M. Clark, E. Pinkham, E. Grant, M. Hamilton, I. Frank, V. Gagne.
 First row: M. Johnson, R. Long, T. Langevin, M. Anderson, B. Brown, R. Edwards, R. Harper.





WOMEN'S GLEE CLUB

Back row: E. Lewis, B. Stiles, J. Tibbetts, J. Christiansen, J. MacDougall, C. Furbush, V. Gagne, R. Harper, J. Katen, M. Buck, L. Garland, I. Perreault.
 Third row: E. Ward, M. Dustin, F. Wood, R. Milliken, M. Johnson, M. McLaughlin, I. Frank, M. Sherman, R. Miller, R. Thomas, A. Elkins.
 Second row: M. Leach, D. Bragdon, C. Clement, C. Reynolds, E. Libby, E. West, M. McPhee, B. Pomeroy, A. Honan, M. Ferguson, H. Morris, E. Greene, E. Pinkham.
 Front row: V. Hagen, M. Skillin, M. Cullinan, J. Billings, M. Davis, L. Jones, D. Whiteley, B. Welch, A. Bickford, F. Browne, A. Dale, M. Greene.



MEN'S GLEE CLUB

Back row: R. Dodge, W. Carey, C. Landry, J. Cambridge, H. Bent, J. Sweet, E. Perneveau.
 Second row: W. Hill, J. Grindle, R. Goodridge, K. Hobbs, I. Pike, W. Van Blaricum, D. McAllister, D. Lindsey.
 Front row: J. Graves, L. Souvigny, B. Dennett, A. Boswell, G. Parritt, P. Roberts, F. Mitchell.

WOMEN'S GLEE CLUB

President EDITH LEWIS
 Vice-President LOUISE GARLAND
 Secretary BARBARA STILES
 Treasurer MARY DUSTIN
 Librarians ESTHER WEST, LUCILLE JONES

The Women's Glee Club meets weekly in the music room. Miss Andrews, our music supervisor, is the director.

This year the club had the honor to be invited to sing at the Maine State Teachers' Convention in Portland. In this capacity they represented Gorham's spirit in an enviable fashion.

They employed the services of several members of the Portland Symphony Orchestra and presented an Evening of



Chamber Music during the winter semester. This spring they inaugurated Music Week with a chapel program.

MEN'S GLEE CLUB

President CARLTON LANDRY
 Vice-President BRADLEY DENNETT
 Secretary-Treasurer IRVING PIKE
 Librarian WILLIAM CAREY

The Men's Glee Club holds weekly meetings. Although its number is about half that of the women's group, they manage to hold up their end of the mixed voice groups. This year the singers revealed their latent personality as bold, bad pirates; but we didn't see the girls run away.

During the past school year, the Men's Glee Club has sung at the County Teachers' Convention, they have participated in the Gorham broadcast, caroled the local community at Christmas, and climaxed its successes with the presentation jointly with the Women's Glee Club, of a musical extravaganza, "The Buccaneers."

THE ORCHESTRA

President JOHN GRINDLE
 Vice-President JANE CHRISTIANSEN
 Secretary-Treasurer VIRGINIA HAGEN

The Gorham Normal School Orchestra under the direction of Miss Miriam Andrews has done outstanding work this year. The orchestra started with some inexperienced musicians and developed a cooperative and harmonious group. Its membership includes representatives of all four classes and rehearsals are held during club periods in Russell Hall. The Orchestra did outstanding work in playing on the Maine Schools on the Air program, December 12, 1937. Occasionally the Orchestra plays during the chapel exercises. Miss Andrews' fine work with this group is truly commendable, and the intelligent interpretation of the numbers played by the musicians is pleasant to the listeners.



THE HOUSE COMMITTEE

President RAE PARADY
 Vice-President ANNE WELTON
 Secretary-Treasurer ADA YATES

The House Committee is a representative body of the young women living in the dormitory. Its purpose is to regulate and control any matters pertaining to the welfare, peace, and happiness of this large group in dormitory life. Elections for the committee are held twice a year, at which time eleven girls become members of a new House Committee. Through the fine guidance and cooperation of Dean Jordan with the members, this body has had a very successful year.

ORCHESTRA

Back row: E. Woods, P. Pomeroy, C. Clement, J. Christiansen, M. Ferguson, H. Bent, B. Stiles, I. Perreault, A. Elkins, M. Martin, J. Grindle.
 Front row: A. Bickford, R. Harper, V. Hagen, A. Dale, C. Durgin, J. Tibbetts, E. Lewis, J. Katen, H. Hurd.



THE HOUSE COMMITTEE

Back row: C. Chisholm, M. Anderson, V. Wheaton, J. Brown, M. Berry.
 Front row: V. Thomas, A. Welton, R. Parady, J. Wing, M. Sleeper.





THE Y. W. C. A. CABINET

Standing: M. Dustin, H. Lord, R. Brown.
Seated: E. Knight, M. Huston, E. Lord,
D. Bragdon, E. Lewis.



Y. M. C. A.

Back row: E. Race, W. Bowie, L. Ray,
J. Brush, H. Bent, A. Doe, J. Sweet,
L. Bridgham.
Second row: C. Landry, J. Grindle, V.
Stapleford, L. Pelletier, P. Roberts,
L. Souvigney, S. Reed.
Front row: J. Peiffer, D. Cressey, Mr.
Packard, W. Johnson, K. Hobbs, G.
Parritt, C. Manchester.

THE Y. W. C. A.

President EVELYN LORD
Vice-President MABEL HUSTON
Secretary EVELYN KNIGHT
Treasurer DOROTHY BRAGDON

This is an organization open to mem-
bers of the school to provide religious
training not otherwise given in the Nor-
mal School. The Cabinet and Advisory
Board are the administrative group of the
organization. Meetings are held every

Thursday evening, at which time interest-
ing speakers from the school and outside
give worthwhile talks. The Y. W. C. A.
sponsors the Freshman Reception, the
Christmas Bazaar, the sale of candy in the
dormitories, and an annual spring picnic.
The Y. W. C. A. also does social work in
the community.

THE Y. M. C. A.

President KENNETH HOBBS
Vice-President WILLIAM JOHNSON
Secretary-Treasurer DONALD CRESSEY

The purpose of the Y. M. C. A. is to
provide religious fellowship for the young
men of the school. A meeting is held every
Thursday evening either at Mr. Packard's
home or in a classroom. At each meeting
either student, faculty, or outside speakers
preside. Joint meetings of the Y. M. C. A.
and the Y. W. C. A. are held once a
month. Mr. Packard is the adviser.



THE LAMBDA PI SIGMA
FRATERNITY

President CARLETON LANDRY
Vice-President BURTON CURTIS
Secretary GEORGE ALBERT
Treasurer LINWOOD CARD

Lambda Pi Sigma is the older of the
two fraternities in Gorham. The activities
of this fraternity are numerous, such as
dances, a play or a minstrel, chapel pro-
grams, weekly meetings, and skating par-
ties. The frat colors are orange and black.
Sigma members are reviving an old custom
this year, in printing a small booklet
which will reveal some of the inside facts
about the fraternity. Mr. L. N. Cilley is
the faculty adviser.

THE ALPHA LAMBDA BETA
FRATERNITY

President EDWARD JESS
Vice-President LAWRENCE RAY
Secretary LEO PELLETIER
Treasurer RALPH HANSEN

This fraternity, the younger of the two,
has much the same principles. The faculty
adviser, Mr. George Brown, has been such
for the past eight years. The fraternity
colors are maroon and gold. Its activities
are also numerous, such as weekly meet-
ings, frat get-togethers, plays, frat out-
ing, sleigh rides, skating parties, and many
other activities. The fraternity sponsored
a minstrel show in May, with a roster of
black-faced comics with many and varied
accomplishments, as well as a balanced
variety of specialty numbers.



LAMBDA PI SIGMA
FRATERNITY

Back row: F. Tupper, P. Gerber, O.
Nesbit, J. Cambridge, P. Grover, C.
Ronco, J. Ham, C. Rines.
Second row: J. Graves, C. Rich, D.
Knapton, D. McAllister, K. Jordan,
R. Dodge, C. Kelley, C. Shea.
Front row: E. Doyle, Mr. Cilley, L.
Card, C. Landry, B. Curtis, G. Albert,
A. Boswell, W. Johnson.



ALPHA LAMBDA BETA
FRATERNITY

Back row: B. Whitehouse, A. Foss, R.
Goodridge, T. Corrigan, R. Staples,
M. Rowe, R. Anderson, L. Bridgham,
J. Brush, W. Hill.
Second row: L. Souvigney, P. Tarbox,
J. Grindle, P. Baldwin, K. Hobbs, I.
Pike, A. Doe, C. Loomis, B. Felker,
E. Race, L. Ross.
Front row: V. Stapleford, J. Norton,
D. Cressey, L. Ray, Mr. Brown, L.
Pelletier, R. Hanson, B. Dennett, C.
Manchester, S. Reed.





Standing: R. Flanagan, J. Brush, J. Graves, R. Longfellow, P. Baldwin, C. Chisholm, J. Cambridge, R. Brown, M. Berry, E. Knight, T. Langevin.
Seated: T. Corrigan, B. Curtis, M. MacDonald, I. Pike, J. Brown.

GREEN AND WHITE BOARD

GREEN AND WHITE EDITORIAL BOARD

Editor-in-Chief—ROSE FLANAGAN
Assistant Editors—JEAN BROWN, RUTH LONGFELLOW, THOMAS CORRIGAN, ROBERT ANDERSON
Business Manager—JOHN GRAVES
Assistant Business Managers—MADELINE MACDONALD, PAUL BALDWIN
Calendar Editors—MERTICE BERRY, IRVING PIKE
Girls' Athletics—RUTH BROWN
Boys' Athletics—BURTON CURTIS
Photographic Editors—CATHERINE CHISHOLM, JOHN BRUSH
Art Editor—JOHN CAMBRIDGE
Typists—THERESA LANGEVIN, EVELYN KNIGHT
Faculty Advisers—MISS LEWIS, MR. WIEDEN

THE GREEN AND WHITE

This year the GREEN AND WHITE Board has attempted to issue a yearbook which differs from those of preceding years.

Hoping to represent school life as we will remember it, we have tried to picture actual school events as they are in actual school experience. All phases of school life have been represented. To obtain pictures of these things, we have had pictures taken of the life within our school, the actual class work along with the training schools with which everyone comes in contact sooner or later. In connection with everyday school life we have pictures of our clubs as they are engaged in work commonly carried on. Besides these we have included pictures showing the way in which our leisure time is spent.

We hope that the GREEN AND WHITE will prove as interesting to you as we, a group of individuals, have hoped and tried to make it.



THE EDITORIAL STAFF OF THE ORACLE FOR 1937-38

Editor-in-Chief DOROTHY LEAVITT
Assistant Editor ANNE WELTON
Business Manager STANLEY REED
Assistant Manager CARL HURD

Associate Editors

News JOHN GRINDLE
Literary .. MARY SYLVESTER, MARION FERGUSON
Fun Department BEATRICE DOUGHTY, PAULINE MERRILL
Alumni and Exchange GRACE PERRY
Women's Athletics VIRGINIA KNOWLES
Men's Athletics CARROLL RINES
Organizations MARION COLE

Reporters

AGNES BICKFORD LORRAINE LANDRY
LAWRENCE BRIDGHAM RALPH HANSEN
EVELYN WARD EDITH SILVERMAN

Typists

DOROTHY MCCARTHY JOYCE KATEN
EDITH GRANT

ORACLE

The more recent of our school publications is the *Oracle*, our newspaper now celebrating its seventh birthday. The staff



is chosen from the student body by the *Oracle* Board after first submitting their qualifications.

This year the *Oracle* has been included under the incidental fee, thus insuring each student with yearly subscription of five copies and assuring the board more funds with which to work. This plan has been most successful, proven by the growth of the paper in its number of pages, new features, and more pictures.


The growth in circulation has stimulated a birth of popular articles which now appear regularly; these were chosen by votes from the student body.

The publication's purpose is twofold. Besides furnishing the school with news and entertainment, it has discovered journalistic possibilities among its staff members.

ORACLE BOARD



Standing: P. Merrill, M. Cole, L. Landry, M. Sylvester, D. McCarthy, L. Bridgham, E. Grant, E. Silverman, R. Hansen, E. Ward, A. Bickford, C. Hurd, J. Katen, V. Knowles.
Seated: B. Doughty, G. Perry, S. Reed, D. Leavitt, A. Welton, J. Grindle, M. Ferguson, C. Rines.



A RECORD OF OUR LIFE FROM
DAY TO DAY — A FEW BITS OF
LIFE WORTH REMEMBERING



CALENDAR



SEPTEMBER

- Monday, 13.* Registration Day.
Tuesday, 14. First Chapel. Ann Gardner, Ruth Anderson, and Ernest Doyle in charge.
Saturday, 18. Dr. Russell's Day. Gus Higgins helped the Boys' Club. George Albert refereed the softball game.
Tuesday, 21. Miss Hale promises to bring her Beard to class.
Thursday, 23. Marian Fergerson. "Yes, I managed to comb through her Beard last night."
Saturday, 25. The Poetry Club held their picnic at Long Island. Who forgot the hamburg, Louise?
Monday, 27. And what should "Fergie" find in her notebook but a snake?
Thursday, 30. Commuters' Club Picnic held at Bonney Eagle Lake.

OCTOBER

- Saturday, 2.* Outing Club Picnic.
Wednesday, 6. First GREEN AND WHITE board meeting. "Cup Day" at Poetry Club.
Thursday, 7. Y. M. C. A. picnic at Indian Cellar.
Monday, 11. Miss Morrill and Miss Black of Castleton Normal School, Vermont, spoke in chapel.
Wednesday, 13. "You Can't Take It With You," read by Mrs. Peterson.
Friday, 15. Pie Sale with "Cup of Coffee Thrown In." Miss Lewis certainly meringued her lemon pie.
Monday, 18. The Gorham Normal School faculty and men presented Louis with his going away presents. Bon Voyage!
Thursday, 21. Miss Muriel Lester of Kingsley Hall, London, spoke in chapel.
Saturday, 23. Scavenger Hunt. Water, water, what a night!
Monday, 25. Great GREEN AND WHITE Hockey Game.
Tuesday, 26. First Oracles out today.
Thursday and Friday, 28 and 29. Teachers' Convention in Portland. G. N. S. in Portland papers quite well represented.

NOVEMBER

- Thursday, 4.* Art Exhibit and Tea at Studio. There must have been a great many esthetic, or hungry, people there.
Friday, 5. Delegates to Boston Conference left Gorham this morning.
Tuesday, 9. Superintendent's Day: the largest number present since its inauguration. The superintendents enjoyed raw carrots while observing Miss Ryan's Geography Class.
Wednesday, 10. The Library Club presented a Book Week program in Chapel.
Thursday, 11. Armistice Day. Poetry Club Outing—eating was the chief event.

- Friday, 12.* Miss Flint failed to make an announcement today.
Wednesday, 17. Report of the Boston delegates.
Friday, 19. First sign of winter: a pair of skis and John Cambridge.
Tuesday, 23. An Anvil Chorus was formed by the shop boys; Hurd was the impressario.
Wednesday, 24. Baldwin supp-e-ressed a quantity of food, but we hear that the Faculty members were not far behind.
Thursday, 25. Thanksgiving Recess. There were only four people at the Dorm this week-end—enough for Bridge, anyway.
Tuesday, 30. Miss Hale was in time for breakfast this morning.

DECEMBER

- Monday, 6.* Junior Class held their election. Albert distinguished himself as a politician. Evening of Chamber Music.
Wednesday, 8. Poetry Club Tea at Miss Lewis's home. The "Crust Committee" functioned.
Thursday, 9. Y. W. C. A. Bazaar.
Saturday, 11. Rhode Island College of Education were entertained by the House Committee. Ken and Bicky kept score, but not the basketball game.
Sunday, 12. Gorham on the air. It must have been a success because Miss Andrews had her "lucky baton."
Thursday, 16. The basketball team left for their first tour.
Saturday, 18. Commuters' Club Dance in Center. Plenty of eats all evening, and enough boys to go around.
Tuesday, 21. Christmas dormitory party given by the House Committee; corollary parties secretly held in rooms later. Track letters awarded.
Wednesday, 22. Everybody rushing for home. Merry Christmas to All!

JANUARY

- Tuesday, 4.* Back to school. The Commuters have no parking lot—poor faculty.
Monday, 10. Pull down the shades and look under the bed—there may be a candid camera man lurking nearby.
Friday, 14. Freshman Girls awarded basketball trophy.
Saturday, 15. Fourth Year Seniors' Advertisement Dance. Outsiders invited—Woo-woo!!
Monday, 17. Well, the Farmington posters certainly prove that Miss Andrews and Miss Littlefield—do have their fun.
Tuesday, 18. "Dor" Thayer needs a soapstone these cold mornings, and thanks to Helen Allen, she got one.
Thursday, 20. Ski Club organized, sponsored by the Outing Club, instructed by John Cambridge.



- Friday, 21.* The last of the GREEN AND WHITE pictures, we hope. We're tired of "looking pretty, please."
Thursday, 27. Glee Club sang at Chapel this morning.
Friday, 28. No teachers on Normal Hill.
Monday, 31. Last day of quarter. A good entertainment postponed.

FEBRUARY

- Thursday, 3.* Everyone is "Paris Bound" with Adele Hoes Lee.
Saturday, 5. Rain! Rain! Rain! No Carnival.
Monday, 7. Spring is here! Miss Keene is looking up.
Friday, 18. The Dramatic Club presents the fanatic play. "I'll Leave It to You."
Saturday, 19. Gorham vs. Farmington. Back to Gorham Day. Familiar faces are seen on the campus.
Monday, 21. Baldwin lost out at the shop today. He didn't get clothes hook number one to hang his coat on.
Tuesday, 22. Washington Tea Dance.
Wednesday, 23. Real snow. Feel of it to make sure it isn't cotton batten. Commuters' Lunch. Miss Lewis is mad for the first time in many moons.
Thursday, 24. Exhibit of Famed Paintings in Art Studio.
Friday, 25. The Freshman boys have a hundred air about them. It's Pledge Day.
Monday, 28. The Commuters look worried. There's a blizzard blowing. How we dreaded to go to and from school. This is the kind of a morning Miss Lewis takes attendance at the close of class.

MARCH

- Tuesday, 1.* Pledges boys look very cute with their haircuts, derbies and canes.
Wednesday, 2. The boys are doing a good job patrolling. "3.30 on Normal Hill and All is Well."
Tuesday, 8. Dr. Russell's interesting review of the Convention.
Wednesday, 9. Poetry Club went to see "Snow White."
Thursday, 10. Frat. Walk. Large delegation. Poetry Club entertained Women's Club with program on Amy Lowell.
Saturday, 12. Lambda Pi Sigma Fraternity's St. Patrick's Day dance. "By their raiment shall ye know them."
Tuesday, 15. Poetry Club St. Patrick Party.
Saturday, 19. Outing Club "Windmill Dance."
Monday, 21. Spring is ushered in with a chapel program by the Commuters' Club.
Tuesday, 22. Tennis has started.
Wednesday, 23. Miss Flint gave an exhibition of ballet dancing.

- Thursday, 24.* Mr. Stuart spoke to English History Class on Methodism.
Saturday, 26. Game night sponsored by Athletic Association.
Monday, 28. Dress rehearsal for Operetta. Baseball in gym. Corrigan's got another flat tire.
Tuesday, 29. Operetta, "The Buccaneers," presented by the combined Glee Clubs.
Thursday, 31. Alpha Lambda Beta minstrel show is under way.

APRIL

- Friday, 1.* First baseball practice on the field.
Monday, 4. "Tests before us; Tests behind us; Tests all around us." We wonder at the quietness on the dormitory front.
Friday, 8. Vacation at last.
Monday, 25. The report from the delegates sent to the Eastern States Conference.
Tuesday, 26. Tupper got to Chapel this morning.
Wednesday, 27. Tea Dance sponsored by the House Committee.
Friday, 29. One-Act Play Contest won by the Fourth Year Class.

MAY

- Monday, 2.* News that our schoolmate, Edith Atwood, died after a short illness.
Tuesday, 3. Y. W. C. A. Tea. Mrs. Frank Roberts gave talk on her travels.
Wednesday, 4. Archery practice on the hockey field.
Thursday, 5. Y. M. C. A. Supper at Salmon Falls.
Friday, 6. Mother's Day Chapel Program by the Poetry Club.
Saturday, 7. The Lambda Pi Sigma Fraternity is made Iota Chapter. Kappa Delta Phi National Fraternity. Game day.
Tuesday, 10. Is the swimming good at Alden's Pond, Baldwin?
Saturday, 14. The May Ball on an ocean liner.
Friday, 20. Minstrel Show given by the Alpha Lambda Beta Brotherhood.
Saturday, 21. Meeting of Southern New England Branch of Gorham Normal School Alumni in Boston.
Wednesday, 25. Outing Club takes a hike.

JUNE

- Saturday, 4.* Poetry Club Outing.
Saturday, 11. Alpha Lambda Beta Fraternity Outing. Kappa Delta Phi Fraternity Outing.
Monday, 13. Senior week begins today.
Tuesday, 14. The commuters established a precedent today. All were on time and in Chapel!
Friday, 17. Senior "hop" in Russell Hall Gym.
Saturday, 18. Alumni Luncheon. Dr. Russell's Reception. Senior Class Play.
Monday, 20. Graduation. Hail and farewell!





Autographs



Autographs



FESSENDEN'S

Stationery - Engraving - Greeting Cards - Fountain Pens
Dennison Goods

497 CONGRESS STREET

PORTLAND, MAINE

SANBORN'S

CLEANSING, PRESSING, DYEING
AND REPAIRING

*High Grade Work at
Reasonable Prices*

MEN'S FURNISHINGS
AND TAILORING

THE MEN'S SHOP

APPAREL FOR MEN AND BOYS

874 Main Street
Westbrook, Maine

The Value First Store of Westbrook

The Vallee Pharmacy

JOHN C. MOORE, *Proprietor*

Main and Bridge Streets

Westbrook, Maine

Compliments of

DR. C. J. BOUFFARD

GORHAM, MAINE

Smart Apparel—

FOR SCHOOL, SPORT AND BUSINESS WEAR

Exclusive in Character—But Not Expensive

Special Prices to Students for Commencement

Benoit's

Westbrook

Portland

Maine's Leading Sporting Goods Store

COMPLETE LINES OF SPORTS APPAREL
AND ATHLETIC EQUIPMENT

THE JAMES BAILEY COMPANY

264-266 Middle Street

Portland, Maine

MUSIC

STEINWAY PIANOS
CONN BAND INSTRUMENTS
PHILCO RADIOS
RCA VICTOR RECORDS

CRESSEY & ALLEN

517 Congress St., Portland, Maine

The New England

Teachers' Agency

H. H. RANDALL, *Manager*

29 Libby Bldg., 10 Congress Square,
Portland, Maine
DIAL 3-8836

Compliments of

PHILIP W. HAWKES

IGA

GORHAM, MAINE
TELEPHONE 57

"The Service Store"

HARRY RAEBURN

Successor to
BROWN, COSTUMER

*Costumes, Make-up Material
and Wigs*

562 Congress St., Portland, Maine

Compliments of

First National Stores

M. E. QUINT, *Manager*

Compliments of

CLARK'S CAFE

MERRITT G. PRIDE, INC.

MERRITT G. PRIDE, *Prop.*

GAS - OIL - TIRES - GREASING

"Service with Pride"

Telephones: Gorham 8142 — Westbrook 160
GORHAM, MAINE

School Supplies

Distinctive Stationery

Fountain Pens

A LARGE ASSORTMENT OF GREETING CARDS
FINE CHOCOLATES AND CANDIES

EASTMAN CAMERAS AND FILMS

Quality Developing - Printing - Enlargements

GEORGE S. BURNELL

GORHAM, MAINE

**MORIN'S
CANDIES**

HOME-MADE ICE CREAM
New and Original Flavors

MORIN'S CANDY SHOP

877 Main Street, Westbrook, Maine

"Eat more of Morin's Candies"

Compliments of

Jimmy's Barber Shop

3 State Street

Gorham, - - Maine

EMERY & DEAN

Dodge and Plymouth

SHELL PRODUCTS

Parking at 31 Preble Street,
Portland, Maine

GORHAM - STANDISH - PORTLAND

School Supplies

Artist Supplies

Books - Stationery - Gifts

Loring, Short & Harmon

Portland, Maine

Compliments of

THE ALBERT STUDIO

463 Congress Street,

Portland, Maine

Owen, Moore's

PORTLAND, - MAINE

Better Fashions for Juniors

LOREN MURCHISON & CO.

40 Clinton Street — Newark, New Jersey

*Manufacturers of Class Rings, Pins,
Medals and Trophies*

OFFICIAL JEWELER TO GORHAM NORMAL SCHOOL
CLASSES OF 1936 AND 1937

State Representative:

M. J. FINESON, Box 277, Bangor, Maine

Outfitters

GIRLS' CAMPS · SCHOOLS · COLLEGES

*Gymnasium Clothing — Outing Specialties
Sports Wear — Camp Uniforms*

HANOLD OUTFITTING COMPANY

Designers and Manufacturers
STANDISH, MAINE

ONE PROFIT — PERSONAL SERVICE — PROMPT DELIVERIES
HANOLD MERCHANDISE IS SOLD DIRECT TO THE CONSUMER

Official Outfitters Gorham Normal School

Gorham Hardware Co.

Kyanize Paints and Varnishes

Men's Clothing

General Electric Mazda Lamps

Phone 102-2

Compliments of

GORHAM GARAGE

IRA C. ALDEN, Prop.



*Strictly a woman's store specializing in stylish apparel
of quality so entirely dependable as to make
possible our guarantee of satisfaction
to every customer*

TELEPHONE 2-0133

Dakin Sporting Goods Company

WHOLESALE AND RETAIL
DEALERS IN
Sporting Goods

*Specializing in School Athletic
Equipment and Supplies*
Bangor and Portland, Maine

Three Cheers for G. N. S.
Home, Hotel and Institutional
Outfitters
In Portland 76 Years

Oren Hooper's Sons

Compliments of

Dixon's Barber Shop
GORHAM, MAINE

CLARENCE E. CARLL

AUTOMOBILE INSURANCE
Gorham, Maine Telephone 5-4

HARRY L. PIKE

OPTOMETRIST

514 Congress St., Portland, Maine
APPLETON BLOCK - 3RD FLOOR

Compliments of

Gorham Savings Bank

Compliments of

FOSTER-AVERY'S
"The System Company"

516 Congress Street, Portland

Our policy is not to sell apparel which is
lowest in price, but apparel which
is best for the least.

(THERE'S A DIFFERENCE)

**Gorham Electric &
Radio Shop**

WESTINGHOUSE

"Every house needs—Westinghouse"
Electric Ranges - Refrigerators
Washers - Water Heaters - Radios
20 School Street, Gorham—Tel. 20

HARMON C. CROCKER

Trade Composition

Linotype - Ludlow - Foundry Type - Elrod - Make-up

394 FORE STREET, PORTLAND, MAINE

ROBERT BURLIN & SON

Book Binders
Paper Rulers

301 CONGRESS STREET, BOSTON, MASS.

Printwell Printing Company

JOHN H. DOOLEY, MANAGER

Printers of

"The Green and White"

9 TEMPLE STREET, PORTLAND, MAINE

